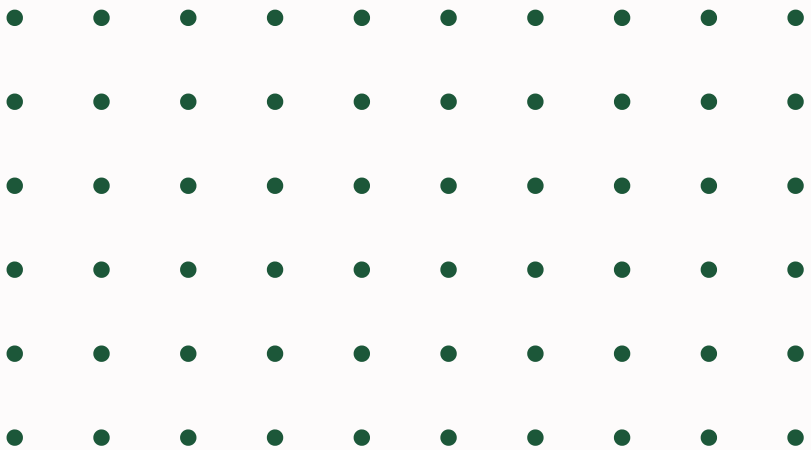


SecureFeed



Annual report 2024





Content

- 01** Preface
- 02** Mission
- 03** Activities
- 04** Participants
- 05** Company profile
- 06** Board of Directors report
- 07** Supervisory Board report
- 08** Key figures
- 09** Trend analyses
- 10** Financial statements
- 11** Notes to financial statements



Preface

You are reading SecureFeed Foundation's annual report for fiscal year 2024. This report looks back on the past year and provides insight into the main developments, results and challenges our organization has faced.

The report also provides an overview of strategic objectives, achievements and how we have fulfilled our responsibilities in the field of feed and food safety.

In addition, it also gives you a glimpse of developments and activities planned for 2025.

This annual report consists of two page colors: a light color for the general annual report and green pages for the annual financial report.



Mission

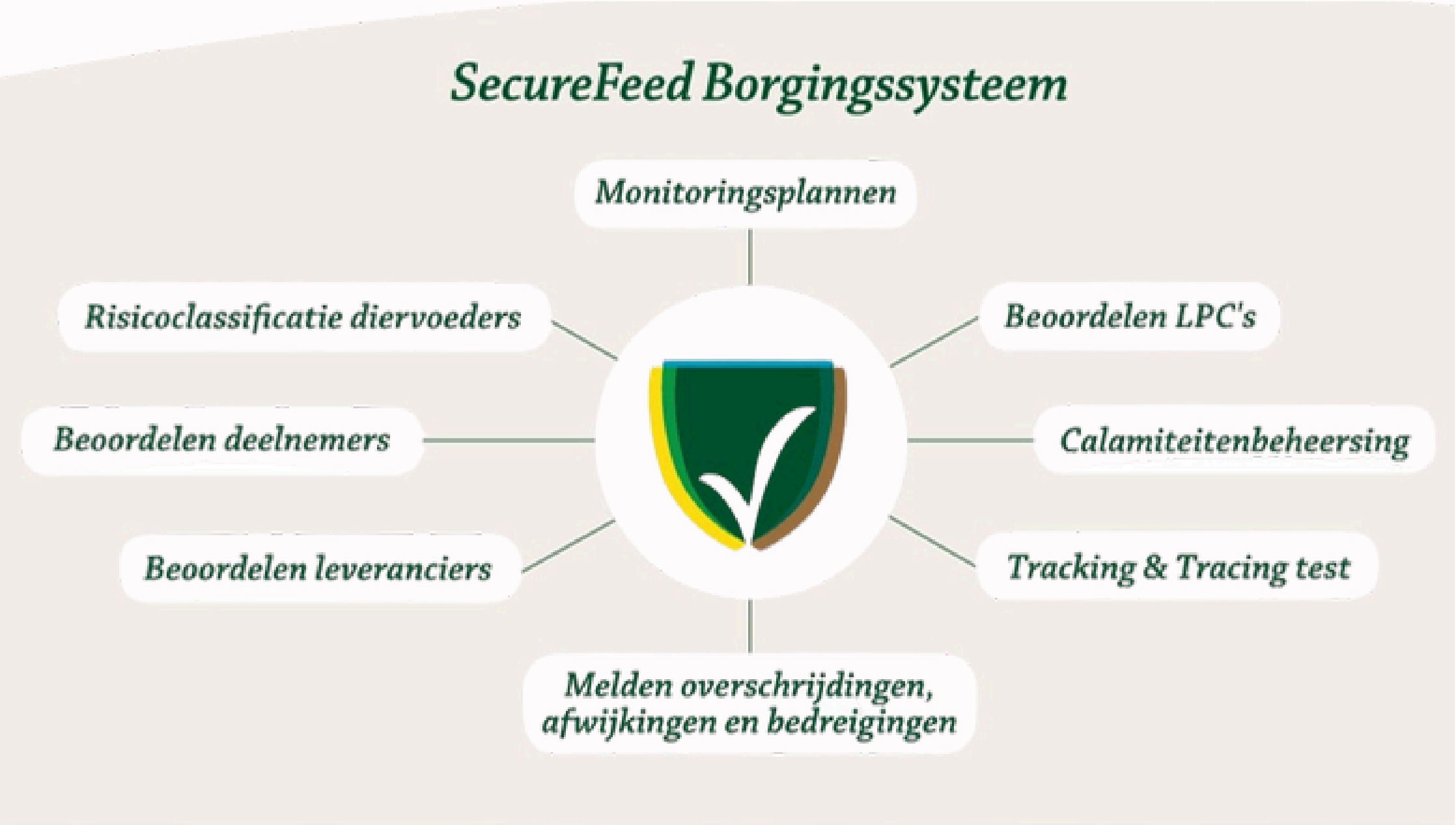
SecureFeed is a non-profit foundation established in 2014 with a mission to contribute to food safety through uniform assurance of feed safety. SecureFeed originates from legal predecessor TrustFeed which in turn resulted from an amalgamation of SafeFeed and TrusQ. In 2024, the foundation was able to celebrate its 10th anniversary.

We fulfill the **mission** by:

- collective implementation, at a uniform and high level, of the regulations from certification schemes such as GMP+ International;
- support with additional assurance, focused on certain raw materials and chain parties;
- identifying risks, in order to minimize and monitor them;
- when a risk does occur, managing this risk by SecureFeed and its participants;
- collaboration and knowledge sharing, with which SecureFeed ensures higher risk awareness among its participants.



Activities



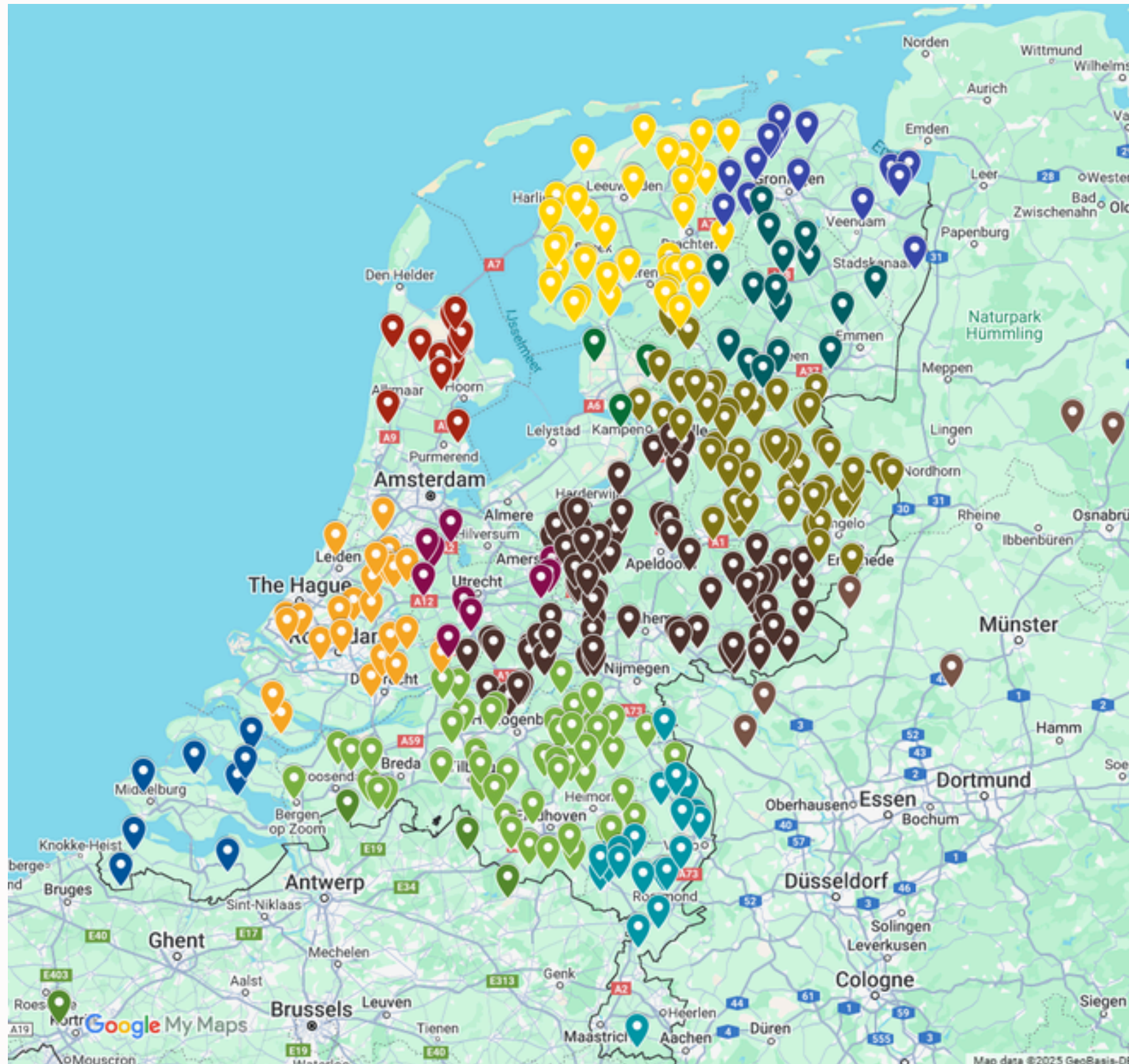
Activities

To achieve the mission, SecureFeed focuses on the core activities in the assurance system as described in the image to the left.

In addition, continuous efforts are made to improve and update the assurance system.



Participants



Participants

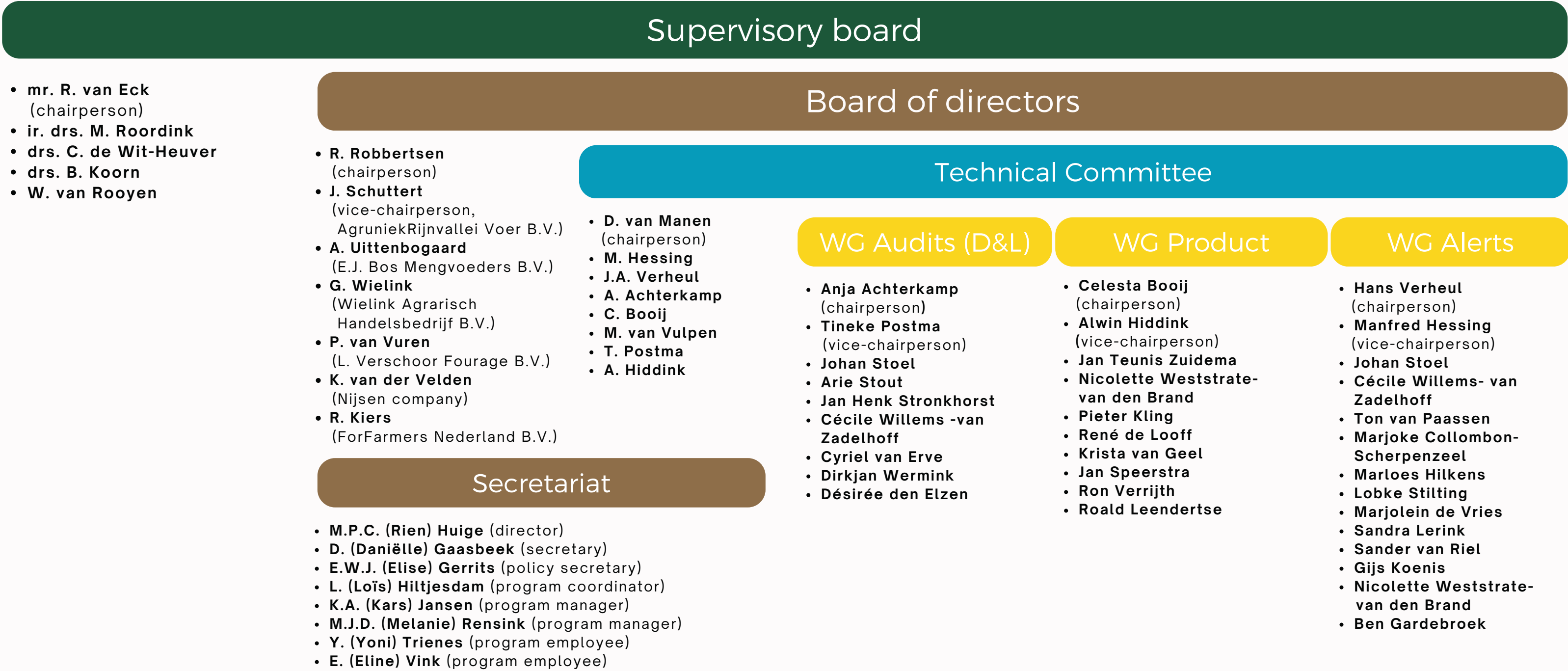
In 2024 SecureFeed had 368 participants (reference date 1-1-2024). The participants are located throughout the Netherlands, in every province. In addition, SecureFeed also has participants in Germany and Belgium (see [list of participants](#)).

The number of participants has been decreasing in recent years, mainly due to consolidation in the industry (see Key figures section).



Company profile

Organization*



* situation per 31-12-2024



Board of Directors report

SecureFeed celebrated its 10th anniversary last year with a networking event at Landgoed Vollenhoven in De Bilt. The theme of the day was "effective monitoring and collaboration".

The Board of Directors met 5 times last year, 1 of which together with the Supervisory Board. In addition to the usual agenda items such as the budget for the next year, the annual accounts and the discussion of the management reports, particular attention was paid to issues such as the application of the SecureFeed Aflatoxin Protocol, PFAS, decision-making regarding intensive supervision, the shrinkage of the sector and the consequences for long-term financing and the multi-year strategy, focused on efficiency, synergy and smart ICT solutions including implementation of AI tools.

It was found that the Aflatoxin protocol is not always applied correctly, therefore a practical manual was written for the application of the Aflatoxin protocol. Also, starting in 2025, participants who process or trade maize and/or maize by-products will be randomly focused on correct application of the Aflatoxin Protocol during the audit.

PFAS is also an issue for the animal feed sector to keep a close eye on. In 2024, SecureFeed therefore conducted an inventory monitoring to get a picture of the levels of PFAS in a number of animal feed raw materials with relatively large volumes. The initial results of this inventory monitoring do not give cause for concern.

In 2024 the process with the NVWA for acceptance as a private control system has also started. This may eventually lead to fewer inspections by the NVWA at SecureFeed participants, based on the principle that the NVWA can trust that our participants are supported in meeting the legal requirements.

With the ongoing conflicts in the world, a 'war on tariffs' with the U.S. and the nitrogen dossier as a result of which the shrinkage in the livestock population has already begun, it is clear that the animal feed sector faces many challenges and that margins are coming under pressure. The strategy for the coming years is therefore expressly aimed at seeking efficiency and synergy. This can be found, for example, in cooperation with fellow organizations, governments and chain parties. Food safety will of course always come first!

Roel Robbertsen
Chairperson Board of Directors



Supervisory Board report

The animal feed sector is in a state of flux. The shrinking livestock population is leading to consolidation in the chain, a development that is noticeable in a reduced number of participants. This trend demands an agile SecureFeed that knows how to adapt to new realities without losing sight of its mission and associated core activities.

The strategy as set out by the Board of Directors focuses on flexibility, cooperation and internal efficiency. It is good to see that ways of controlling costs and continuing to provide added value are being actively sought. The secretariat functions solidly and thus forms a stable basis under SecureFeed's activities.

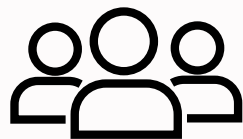
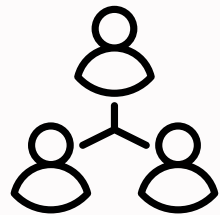
The Supervisory Board fulfills its supervisory role with care and commitment and to this end met 5 times last year, including once in a combined meeting with the Board of Directors.

SecureFeed is there for and by participants. We are proud of that. Just like the resilience and dedication of the sector itself. This pride is what drives our continued commitment, also in 2025!

Claudia de Wit-Heuver
Chairperson Supervisory Board



Key figures




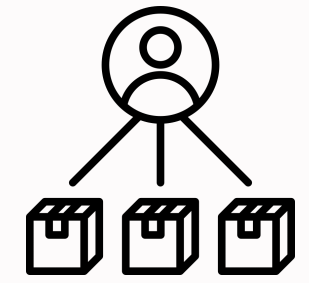
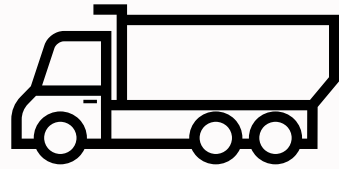
Activity	2024	2023	2022
Secretariat (fte)*	6,7	6,7	7
Participants**	368-364	366-373	378-375

* SecureFeed, in addition to secretariat staff, offers students the opportunity to gain work experience. Working students support administrative tasks in conformity assessment. They regularly continue their career in the industry or at one of the participants.

** Reference date 01-01 (left) en 31-12 (right)




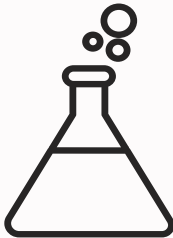
Key figures

	Activity	2024	2023	2022
	Suppliers*	2040	2130	2129
	SPC's	6914	7554	7513
	Rejected shipments	134	104	76

* Concerns the number of suppliers including pre-link



Key figures

	Activity	2024	2023	2022
	Audits	130	121	124
	Samples (collective)	1198	1195	1142
	Analyses (collective)	180.613	125.157	128.634






Key figures

	Activity	2024	2023	2022
	Auditors (lead)*	22	20	21
	Auditors (co)*	44	42	39

*Auditors who have done 1 or more audits as lead-/co-auditor during the year in question



Key figures

	Activity	2024	2023	2022
	Notifications*	584	812	615
	Calamity	0	1	0
	Intensive monitoring	1	1	0

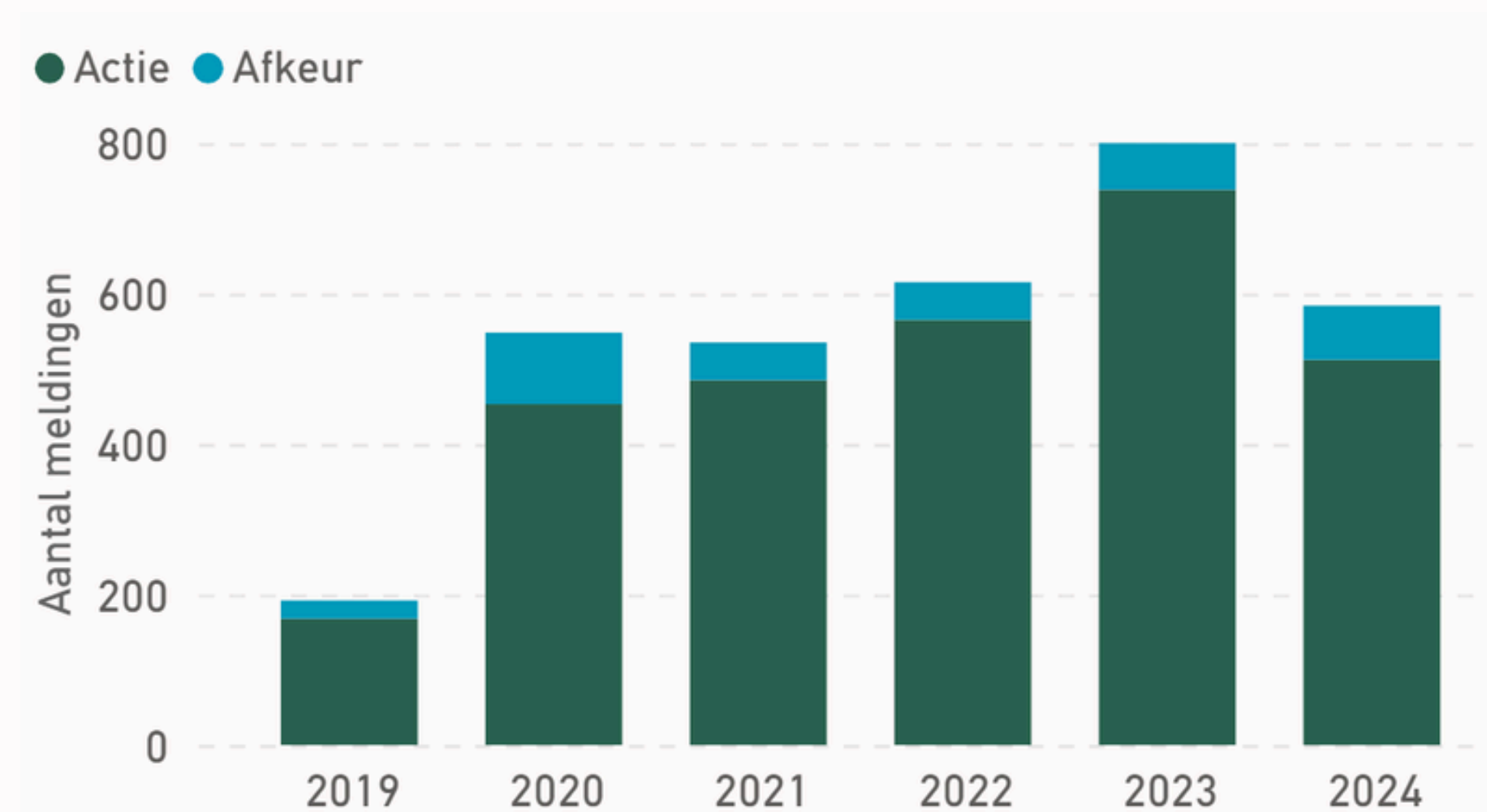
* Concerns original notifications: notifications from different participants relating to the same batch are reported as one notification



Trend analyses

An overview of the most notable issues from the notifications and results of the SecureFeed Animal Feed Monitoring Plan.

Number of notifications



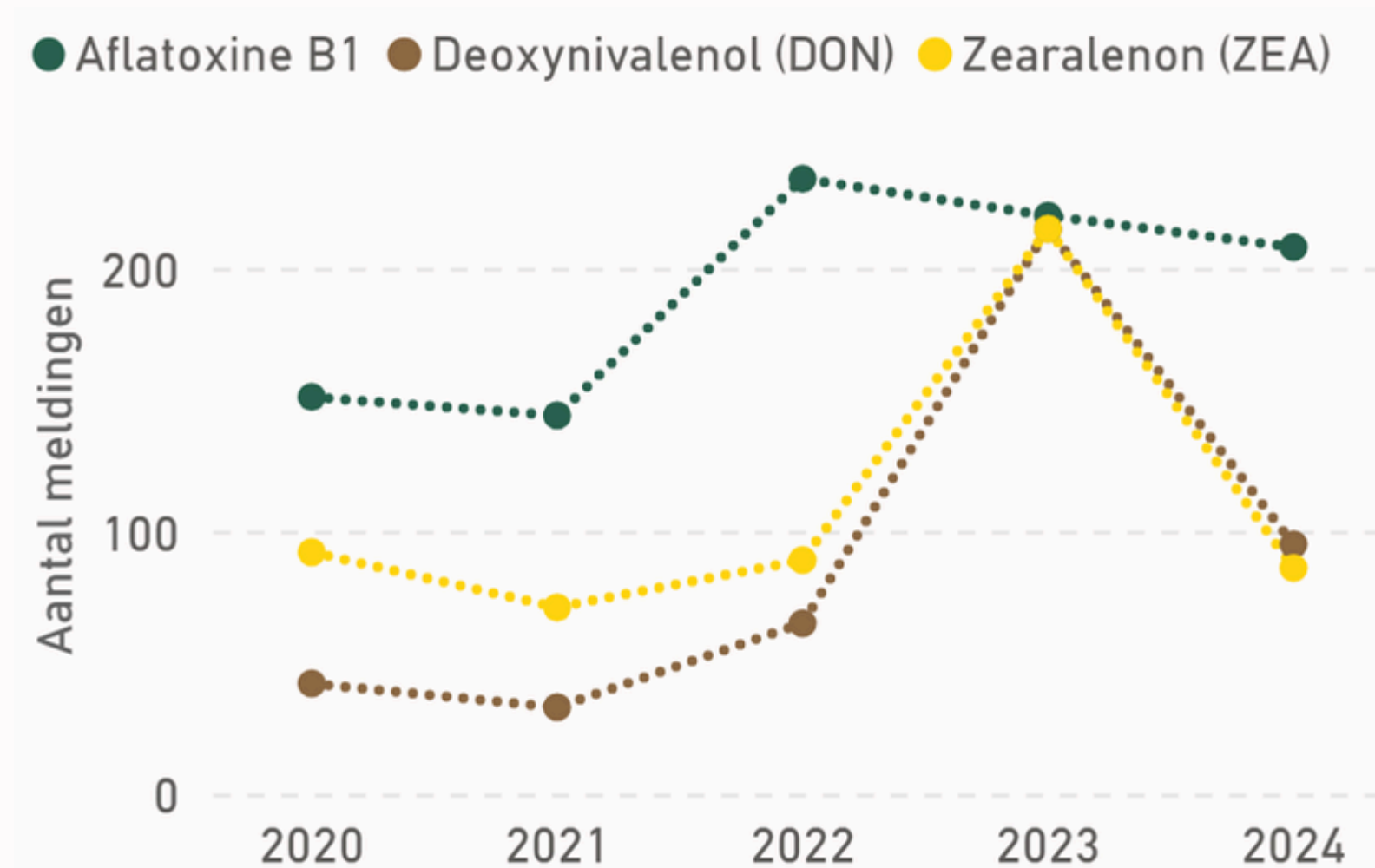
Numbers of notifications subdivided into notifications of exceeding the action limit (green) and rejection limit (blue).

In 2024, the number of notifications dropped to 584, returning to a level similar to previous years from 2020.

In 2023, a notable peak was observed in the number of notifications, with a total of 812 cases. This sharp increase was largely due to elevated levels of the mycotoxins DON and ZEA in maize originating in Poland.

Trend analyses

Mycotoxins trend reports DON, ZEA en Aflatoxin B1



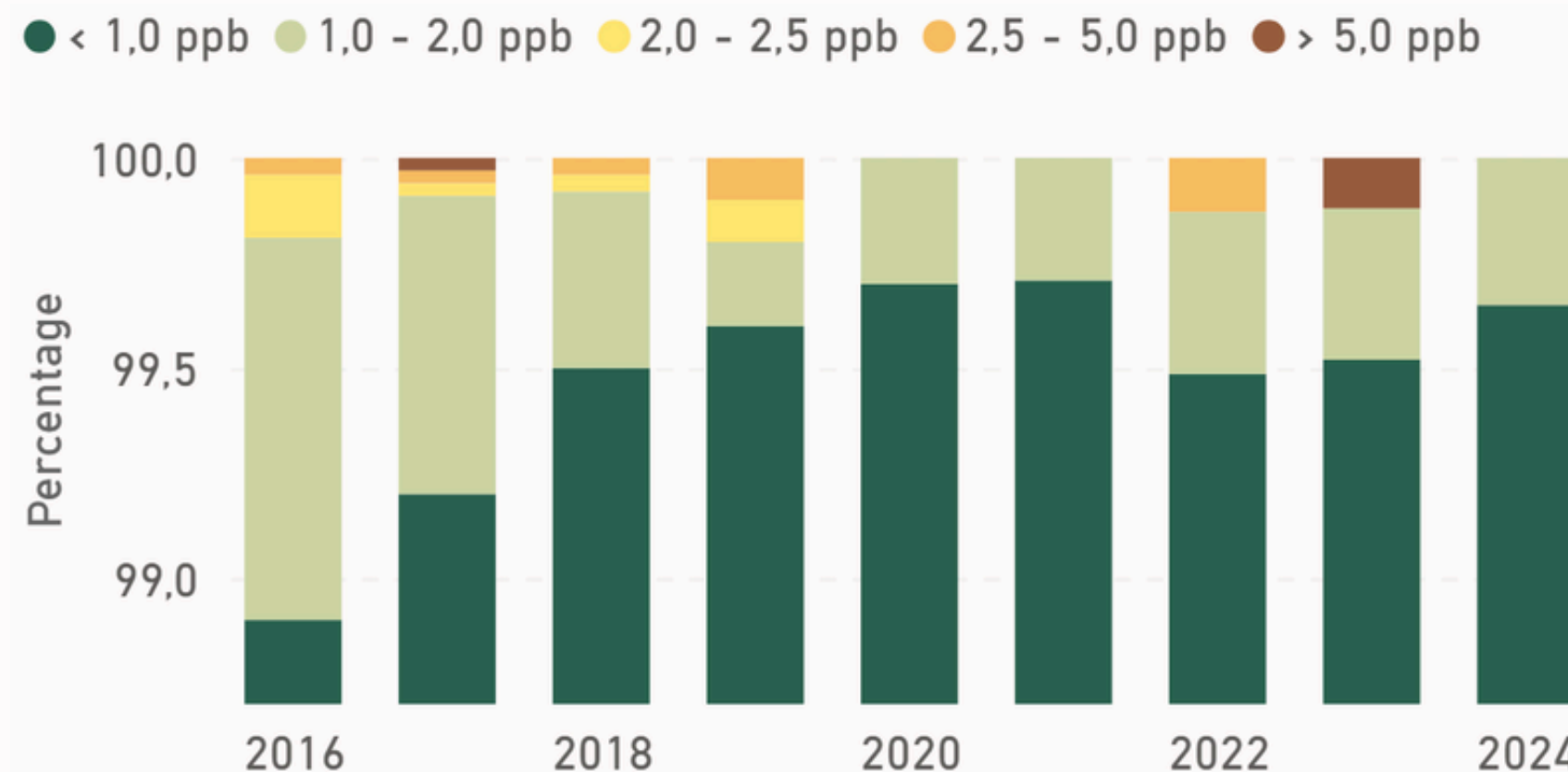
Number of notifications DON, ZEA and Aflatoxin B1 from 2020 - 2024.

It is notable that the number of notifications of Aflatoxin B1 in the last three years (2022-2024) is structurally higher than in previous years. The level is stable between 200 and 250 notifications per year, but was significantly lower in 2020 and 2021. This trend calls for continued attention to Aflatoxin B1 in monitoring and risk assessment.

The increase in 2023 in the number of notifications of DON and ZEA did not continue in 2024.

Trend analyses

Aflatoxin B1 in dairy cattle feed



Aflatoxin levels found in final feeds for dairy cattle, shown in percent

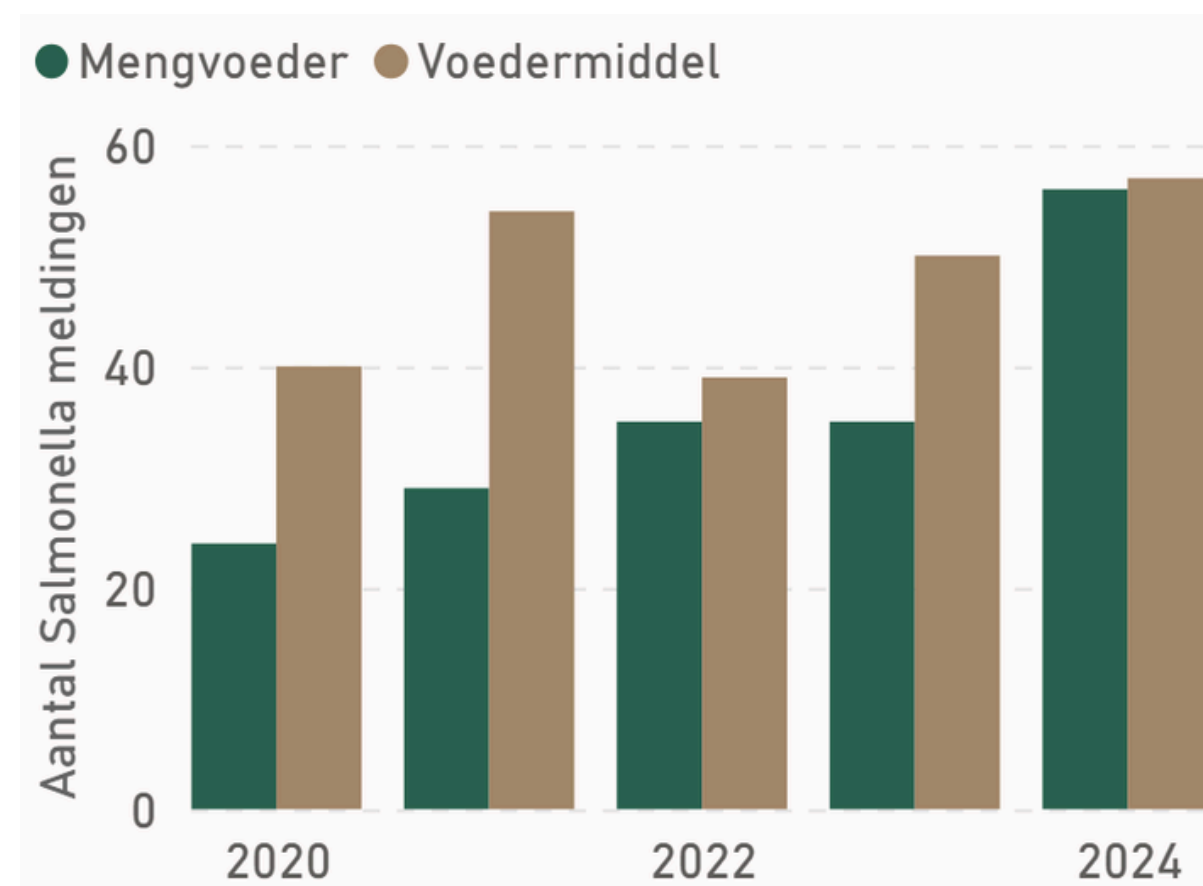
In order to comply with the SecureFeed Aflatoxin Protocol, participants are required to analyze final feeds for dairy cattle for the presence of Aflatoxin B1.

The analysis results show that the proportion of final feeds containing less than 1.0 ppb Aflatoxin B1 has remained stably high in recent years. An increase can actually be seen compared to the early years of SecureFeed.

The increasing number of reports in raw materials combined with a higher percentage of final feeds containing less than 1.0 ppb Aflatoxin B1 indicates an effective assurance of Aflatoxin B1 in the chain.

Trend analyses

Salmonella



number of salmonella reports in compound feed and feed materials

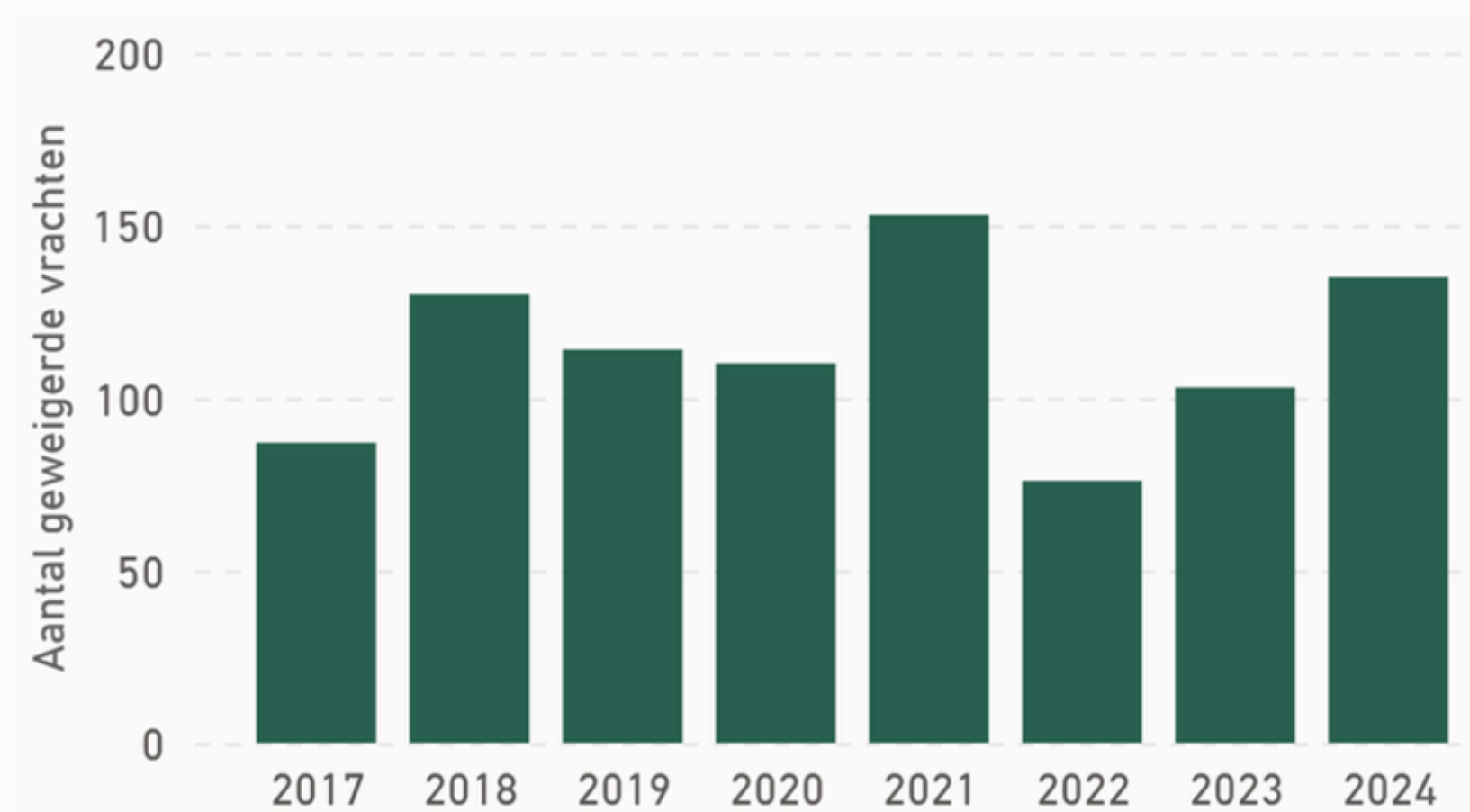
In 2024, the number of notifications of Salmonella was higher than in previous years. A clear increase is particularly evident in final feeds.

The increase seems to be partly due to a more intensive monitoring program with more sampling at SecureFeed participants, resulting in more infections being detected.

In addition, there may also be an actual increase in Salmonella pressure in the chain.

Trend analyses

Rejected shipments



Number of shipments rejected per year from 2017 to 2024

In 2024, the number of rejected shipments was relatively high at 134 cases. A marked increase from 2023 (104 freights) and 2022 (76 freights), making 2024 among the highest numbers of rejected shipments in the past eight years.

No direct cause is known for this increase. The most commonly reported reasons for refusal: the presence of live insects, abnormal odor, and to a lesser extent, putrefaction and mold. The products most frequently rejected were wheat, barley and peas.

Financial statements

Balance sheet

Per 31 december	2024	2023
Assets	€	€
Fixed assets	28.702	21.503
Current assets	277.295	250.835
Liquid assets	970.709	1.241.456
Total of assets	1.276.706	1.513.794

Per 31 december	2024	2023
Liabilities	€	€
Designated reserves	915.905	932.543
Other reserves	123.475	100.719
Long-term liabilities	0	0
Short-term liabilities	237.326	480.532
Total of liabilities	1.276.706	1.513.794



Financial statements

Profit and loss account (1/2).

Per 31 december	2024	2023
Income	€	€
Net income	2.038.754	2.112.679
Purchase value income	784.060	840.694
Gross margin	1.254.694	1.271.985

Per 31 december	2024	2023
Expenses	€	€
Employee costs	805.348	746.335
Depreciations	6.295	610
Other expenses	437.552	521.958
Total of expenses	1.249.195	1.268.903
Interest income/ expenses	17.257	-2.420
Balance income & expenses	22.756	662



Financial statements

Profit and loss account (2/2).

Per 31 december	2024	2023
Allocation of balance, income and expenses	€	€
Designated reserves	-16.638	-17.457
Other reserves	22.756	18.119
Gross profit	22.756	662



Notes to financial statements

Income

Total income in 2024 was €1,254,694.

The contribution per tonne was initially settled at 2.5 cents per tonne. After restitution, following the adoption of the annual accounts, it was finally settled at 1.5 cents per tonne.

The contribution for SMD has been settled at 2.4 cents per tonne. A limited refund is still planned, bringing the effective contribution to around 2.35 cents per tonne.

Revenue from SPCs, and the associated contribution for audit points, has declined due to mergers and acquisitions within the sector.

The total tonnages declared by participants in 2024 also declined: 19,774,667.788 tonnes, down from 21,122,960.008 tonnes in 2023. A decrease of 6.4%.

Cost

The total cost in 2024 was €1,249,195.

Costs for the audit programme were lower in 2024 than in 2023. In supplier audits, costs decreased because the contribution for co-auditors was reduced, external hiring was more advantageous and no major audit trip took place.

The participant audits were mainly low-risk audits, in which no deficiencies were found.

Staff costs, on the other hand, were higher, partly due to the 5% increase in the collective labour agreement and filling vacancies.

From the designated reserve for knowledge sharing, an amount of €16,638 was spent on a networking event. In addition, investments were made in office equipment.

Finally, there were no unforeseen costs this year.

You can view the full 2024 annual accounts [here](#).





Contact

-  +31 (0)85 77 319 45
-  info@securefeed.eu
-  www.securefeed.eu
-  Bronland 10 E-1
6708 WH Wageningen

