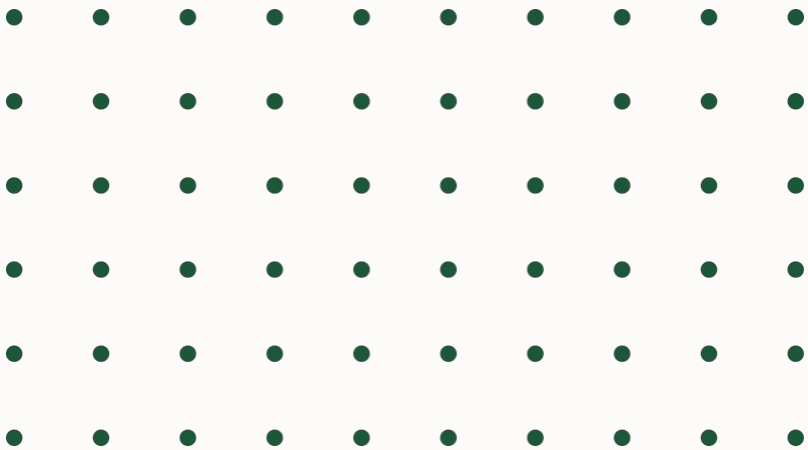


SecureFeed



Annual report 2023





Content

01	Mission and ambition	3
02	Organization	4
03	Working methods and activities	6
04	Developments 2023	11
05	Financial Statements	13
06	Outlook 2024	16
07	Attachments	18



Mission and ambiti e

Caring for food safety _

SecureFeed works toward **trusted safe foods of animal origin**.

With ti jd **recognition of risks** and taking **appropriate measures**, SecureFeed and its Participants ensure the food safety of
Feed materials, Compound feed and
Feed additives directly or indirectly to livestock farmers.

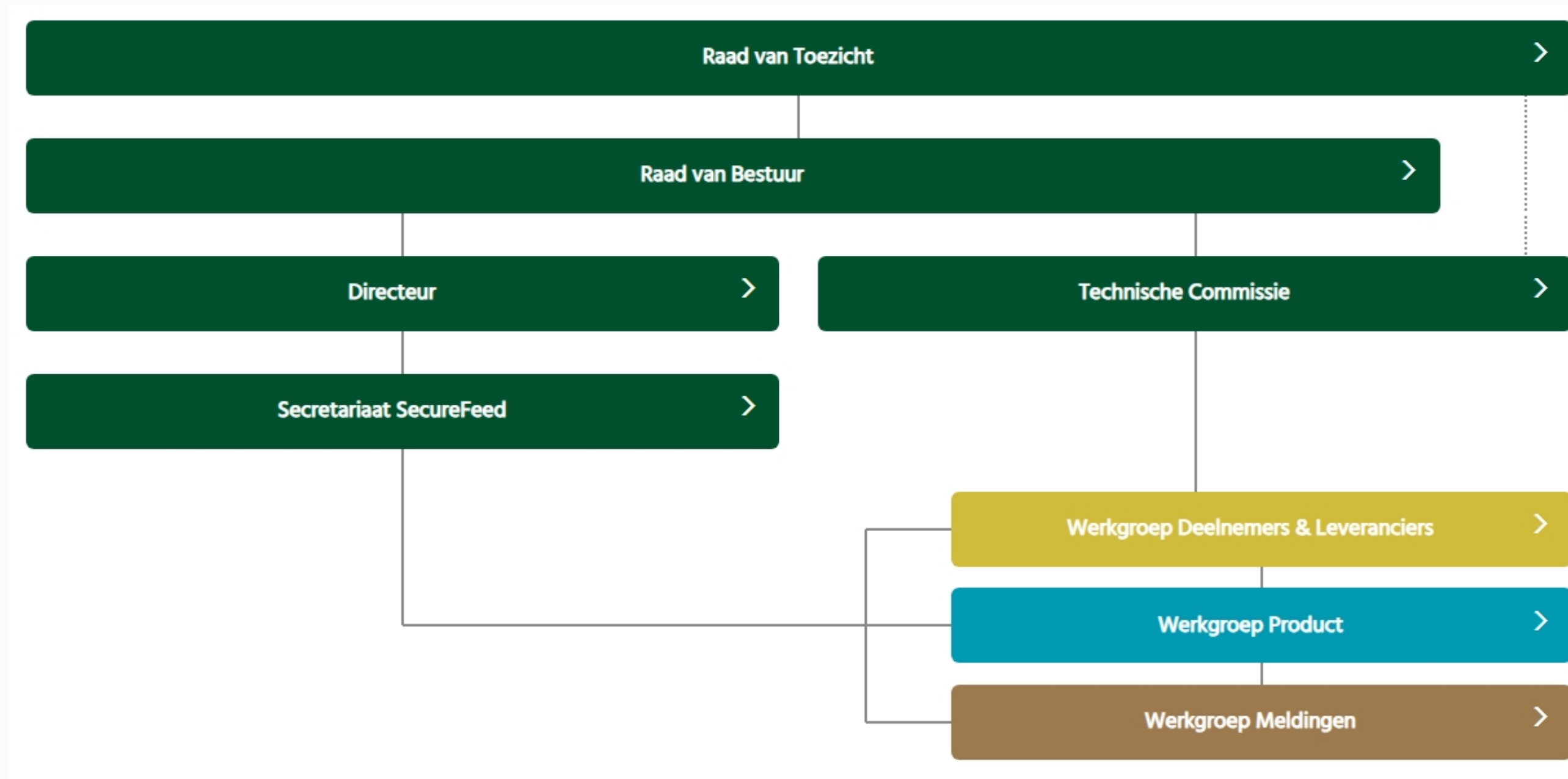
As an **impartial point of contact** for Participants, chain partners and external parties, SecureFeed ensures mutual contact, coordination and openness.

By **sharing knowledge and experience**, risks can be further reduced and a decisive approach can be directed in the event of calamities.

The merit is , **integrity and stability of** meat, dairy and egg **production chains**.



Organization - general



Organization - SecureFeed secretariat



+

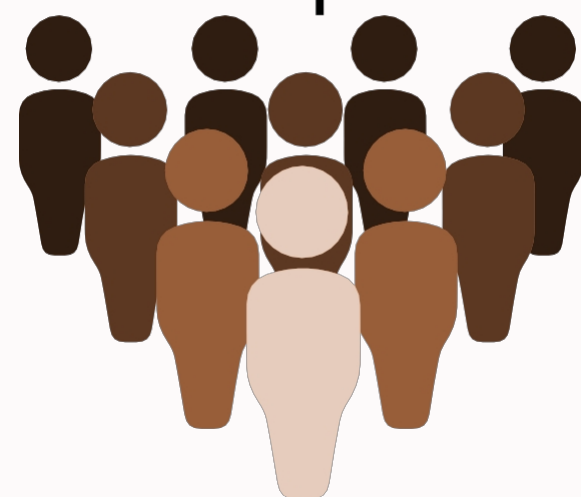
1

-

1

8

employees



+

2

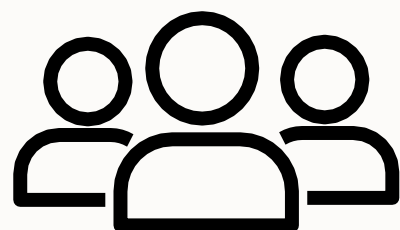
-

1

3

working students

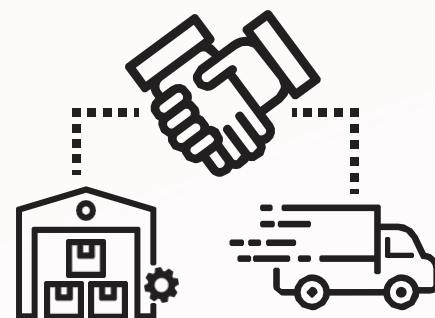
Working methods and activite n



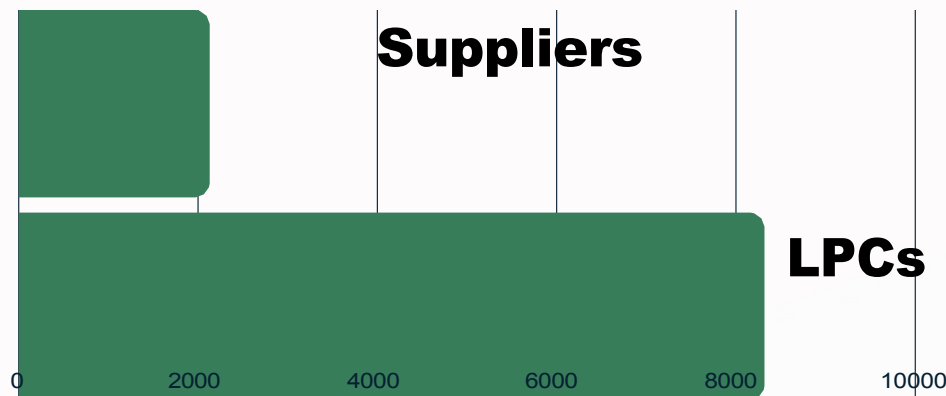
Participants.



As of December 31, 2023, SecureFeed had 378 Participants. A slight stij increase from 2022 (373 Participants).



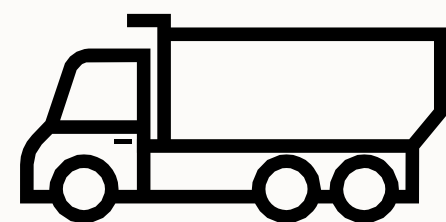
Suppliers



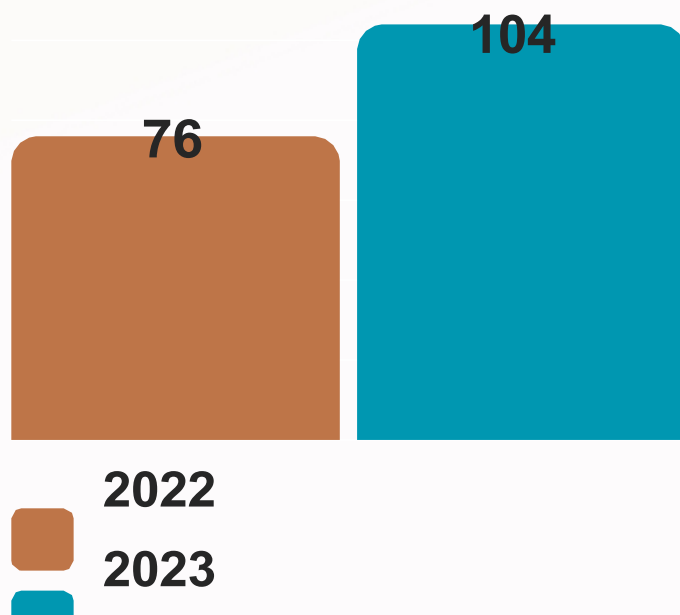
2130 Suppliers and 8318 unique LPCs. registered in 2023. Fewer non-conformities were identified on LPC registration in 2023 than in 2022.



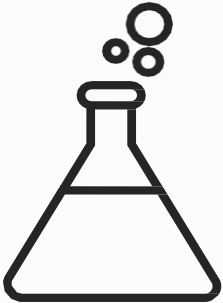
Working methods and activities



Rejected shipments



Unique rejected shipments: refusal for multiple reasons is considered one shipment.
The most important reasons remained: unhealthy partij (musty/mildew/distracting odor/insects).



Analyses

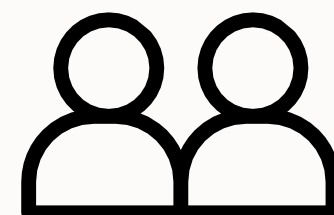
+ 200.000

By 2023, approximately 200,000 analyses will have been performed on bijneerly 1,200 samples.*

*Multiple analyses can be performed on a single sample.



Working methods and activities



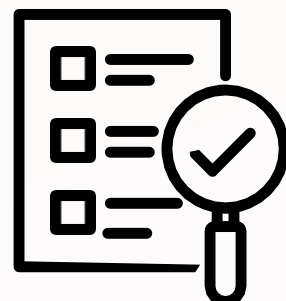
Auditors

12%

of the Participants
provides one or more
auditors



*Of the total number of auditors, 73% are co-auditors
and 27% are lead auditors.*

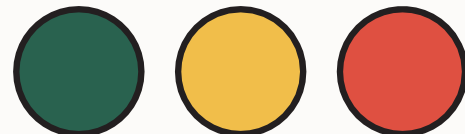


Audits

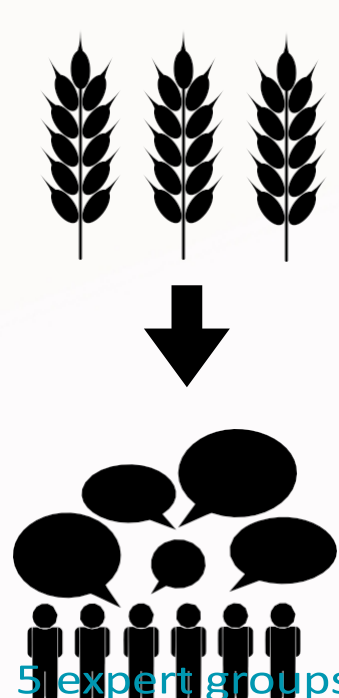
121

*By 2023, 121 supplier audits will be
Conducting an audit, comparable to 2022 (124
audits).*

Working methods and activities



Risk classification.



All products reviewed
every 3 years

Notifications
Audits Signals
• Market
• Experience
•

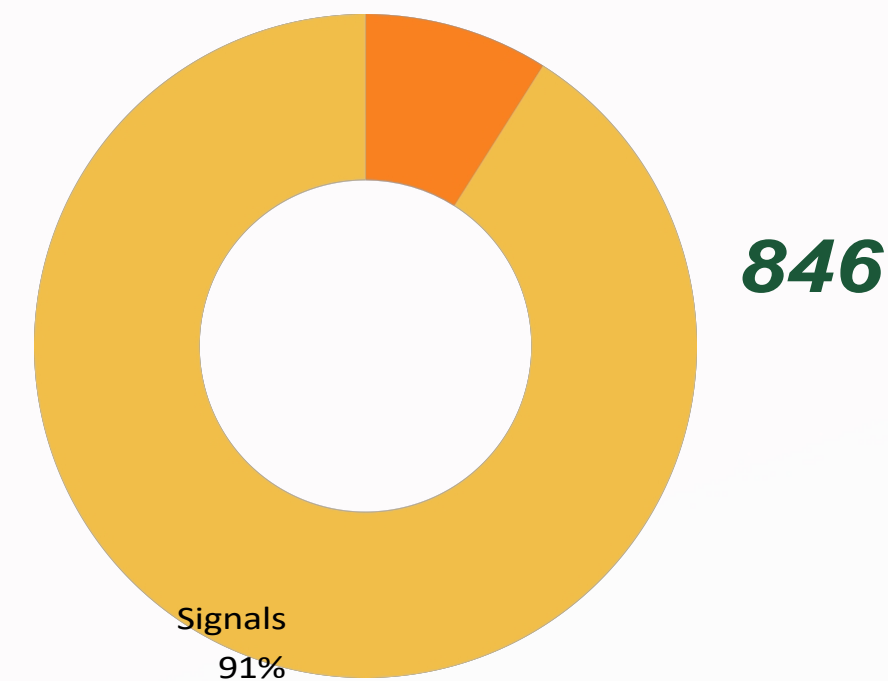
5 expert groups

552 products in the database in 2023 are fully
reviewed by the expert groups.
For the most important *wijk* changes: see
Developments 2023



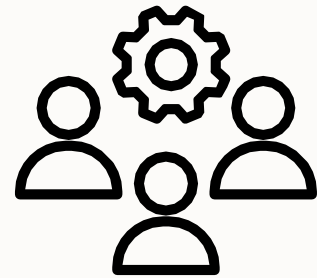
Notifications

Alerts 9%



Of 846 notifications, 771 were signals (exceeding
Action limit) and 75 alerts (exceeding Rejection
limit).
The number of Notifications increased from 2022
(694).

Working methods and activities



Contact and cooperation



Calamity



In 2023, SecureFeed collaborated with the Rijksinstituut voor Volksgezondheid en Milieu (RIVM) and the Netherlands Food and Consumer Product Safety Authority (NVWA) to determine the cause of a human infection with Salmonella enteritidis.



*There was one scale-up to emergency level due to aflatoxin in corn.
Aflatoxin monitoring will receive additional attention in the coming years.*

Developments 2023

Risk classification revision.

The main changes in risk classification as a result of the revision were:

- ♦ **Resistant soybean/rapeseed**

- **Salmonella scaled up**

Because treatment with formaldehyde has not been allowed since June 2022.

- ♦ **Dried beet pulp**

- **Zearalenone from low to medium risk** Based on monitoring results where the GMP+ standard was exceeded.

- ♦ **Di and tricalcium phosphate**

- **Fluorine more frequent monitoring**

Based on monitoring results where the standard was exceeded with little risk to food safety.

- ♦ **Organic products Risk scaled**

- **down**

Initially higher risk class due to possible fraud with common products, no risk to food safety

Changes in risk

Mycotoxins

*In 2023, a stijging of **deoxynivalenol (DON)** and **zearalenone (ZEA)** was observed in cereal products. A significant part of this stij was attributable to cereals from **Poland**.*

*This change in risk is reflected in the **monitoring for 2024**.*

PFAS

*PFAS (per- and polyfluoroalkyl substances) were frequently in the media in 2023 and **certainly** have **SecureFeed's attention** as well.*

*A **fact sheet** on PFAS was compiled by SecureFeed in 2023. The fact sheet provides useful, concise information on PFAS.*

*In addition, **monitoring** of PFAS in animal products began in 2023.*

In 2024, this monitoring will continue with plant products.

Developments 2023

ICT



ICT is **important** for both SecureFeed and its Participants to be able to *tijdigly* provide relevant information related to food safety.



The **preparation** took place in 2023, in 2024 the **output** will also be visible.



Among the innovations taking place for **Participants** are the **usability** of the database and website.



For **SecureFeed**, innovations are taking place **in office automation** to work efficiently with modern technologies.

Annual accounts g

Balance

As of December 31	2023	2022
Assets	€	€
Fixed assets	21.503	1.205
Current assets	250.835	113.502
Cash and cash equivalents	1.241.456	1.504.085
Total assets	1.513.794	1.618.792

As of December 31	2023	2022
Liabilities	€	€
Earmarked reserves	850.000	950.000
Free reserve	100.719	82.600
Non-current liabilities	0	0
Current liabilities	480.532	586.192
Total liabilities	1.513.794	1.618.792



Financial Statements

Operating account (1 / 2)

As of December 31	2023	2022
Income	€	€
Net income	2.112.679	1.933.723
Purchase value income	840.694	702.753
Gross profit	1.271.985	1.230.970

As of December 31	2023	2022
Charges	€	€
Personnel costs	746.335	753.976
Depreciation	610	1.184
Other expenses	521.958	496.912
Interest expense and similar expenses	-2.420	-5.501
Total expenses	1.268.903	1.225.072
Balance of income and expenses	662	847



Financial Statements

Operating account (2/ 2) .

As of December 31	2023	2022
Appropriation of balance, income and expenses	€	€
Earmarked reserves	-17.457	0
Free reserve	18.119	847
Gross profit	662	847



Outlook 2024

01

Assessment framework aflatoxin B1.

Following, among other things, an aflatoxin B1 **calamity** in 2023, monitoring for aflatoxin B1 is receiving increased attention.

- The development of an **Assessment framework and a tracking and tracing (T&T) assistance document** will enable compliance with the **aflatoxin B1 protocol**, improve **monitoring** for **food safety**.

Assessment framework
for aflatoxin B1

Guideline T&T

Review of aflatoxin B1 protocol,
internal and external audits

Enhanced
food safety



02

Further development and implementation of ICT

Implementation of the **CRM system** to respond appropriately to Participants' questions and needs.

- **Moving the database** to a new system provider.

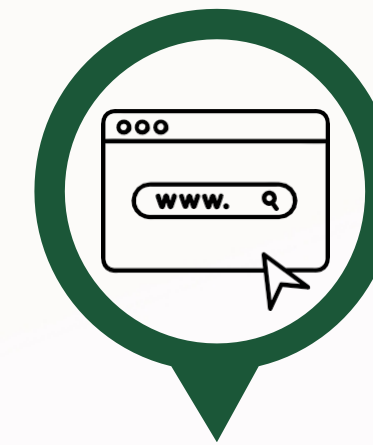
Renewed website (see item 3).

- Access the **Quality manual directly from the website**.
- Switch for SecureFeed to new **office automation** (including Teams).

Secretariat **management of website** (more efficient and cost-saving).

•

•



Outlook 2024

03

Revamped website

In 2024, SecureFeed will **revamp** its **website with several improvements:**

Improved user experience Advanced functionalities Improved visualization

- Increased flexibility of content management by Secretariat
- Overall makeover, including revising texts
-
-
-



04

Networking meeting 2024

On June 6, 2024 SecureFeed is hosting a networking meeting **"Effective Monitoring and Collaboration."**

For the past **10 years**, SecureFeed has worked to promote **food safety in the animal feed industry.**

This meeting will look to the future: **how to work even better together in the industry.**

Speakers:

Prof. Ine van der Fels-Klerx - Wageningen University and Research

Ruth Bouwstra DVM PhD, Director Corporate Affairs and Quality vanDrie Group



Attachments

Board of directors

- **R. Robbertsen**
(chairman)
- **J. Schuttert**
(vice president)
- **A. Uittenbogaard**
(E. J. Bos Compound feed. B. V.)
- **G. Wielink**
(Wielink Agricultural
Trading Company B. V.)
- **P. van Vuren**
(L. Verschoor Forage B. V.)
- **K. van der Velden**
(Nijsen company)
- **R. Kiers**
(For Farmers Netherlands B. V.)

Supervisory Board

- **Mr. R. van Eck**
(chairman)
- **ir. drs. C. Roordink**
(ABZ The Collaboration)
- **drs. C. M. J. M de Wit-Heuver**
- **B. Jager-Koorn**
- **W. van Rooyen**

Disputes Committee

- **A. C. J. M. Hectors**
- **P. W. van Baal**
- **P. A. de Lange**
- **M. de Vries**

Technical Committee

- **D. van Manen**
(Duynie Group, chairman)
- **M. Hessing**
(For Farmers Netherlands B. V.)
- **J. A. Verheul**
CAVV South-East Salland & AVC The
Gangway
- **A. Achterkamp**
(Feed Group South)
- **C. Booij**
(De Heus Feeders B. V.)
- **D. den Elzen**
(Agrifirm NWE B. V.)
- **M. van Vulpen**
(Van Vulpen Veevoeders B. V.)
- **T. Postma**
(Postma (animal) feeds)
- **A. Hiddink**
(Agrifirm NWE B. V.)



Attachments

Secretariat

- **M. P. C. (Rien) Huige**
(Director)
- **D. (Danielle) Gaasbeek**
(Secretary)
- **K. A. (Kars) Jansen**
(program manager)
- **M. J. D. (Melanie) Rensink**
(program manager)
- **J. M. (Judith) Straver**
(program coordinator)
- **L. (Loïs) Hiltjesdam**
(program employee)
- **Y. (Yoni) Trienes**
(program employee)
- **D. (Daphne) Pellegrum**
(program employee)
-

Working group 'Participants & Suppliers'.

- **Anja Achterkamp** (president)
- **Tineke Postma** (vice chairman)
- **Melanie Rensink** (program manager) **Yoni Trienes** (program assistant) **Johan Stoel** (Forage)
- **Arie Stout** (Forage)
- **Jelle Fuite** (Compound feeds and Feed materials)
- **Geert van Grunsven** (Compound feed and Feed materials)
- **Jan Henk Stronkhorst** (Compound feed and Feed materials)
- **Cécile Willems -van Zadelhoff** (Compound feed and Feed materials)
- **Hubert Ruis** (Mineral feeds and additives)
- **Cyriel van Erve** (wet (animal) feed)
-



Attachments

Working group 'Product'

- **Désirée den Elzen** (president)
- **Celesta Booij** (vice chair)
- **Melanie Rensink** (program manager) **Judith Straver** (program coordinator) **Jan Bieleman** (forage)
- **Jan Teunis Zuidema** (Forage)
- **Nicolette Weststrate- van den Brand** (Compound feeds and Feed materials)
- **Pieter Kling** (Compound feeds and Feed materials)
- **René de Looff** (Compound feeds and Feed materials) **Krista van Geel** (Compound feeds and Feed materials) **Jan Speerstra** (Mineral feeds and additives)
- **Alwin Hiddink**(moisture-rich (animal) feeds)
- **Ron Verrijth** (wet (animal) feed)
- **Roald Leendertse** (Compound feeds and Feed materials)
-

Working group 'Alerts'.

- **Hans Verheul** (chairman)
- **Manfred Hessing** (vice chairman)
- **Melanie Rensink** (program manager)
- **Judith Straver** (program coordinator)
- **Lois Hiltjesdam** (program associate)
- **Johan Stoel** (Forage)
- **Geert van Grunsven** (Compound feed and Feed materials)
- **Cécile Willems - van Zadelhoff** (Compound feed and Feed materials)
- **Marjoke Collombon** (Compound feed and Feed materials)
- **Marjolein de Vries** (Compound feed and Feed materials) **Sandra Lerink** (Compound feed and Feed materials)
- **Ton van Paassen** (trade in Compound feed and Feed materials)
- **Nicolette Weststrate- van den Brand** (Mineral feeds and additives)
- **Pauline Kraan** (Mineral feeds and additives)
- **Gijs Koenis** (moisture-rich feeds)
- **Ben Gardebroek** (Compound feeds and Feed materials)
-





Contact



+31-85 77 319 45



info@securefeed.eu



www.securefeed.eu Bronland



10 E-1

6708 WH Wageningen

