



TOGETHER FOR  
A HEALTHIER WORLD

# THE FAMILY BOOK



Mandatory  
information



MEDICE  
Arzneimittel Pütter GmbH & Co. KG  
Kuhloweg 37  
58638 Iserlohn  
[www.medic-health-family.com](http://www.medic-health-family.com)



 **MEDICE**  
THE HEALTH FAMILY

# Fore- word

In recent years, the MEDICE Health Family has undergone a radical transformation from a medium-sized pharmaceutical manufacturer into an internationally operating provider of multimodal healthcare solutions. This development follows a clear guiding principle: “Together for a healthier world”. We want to improve people’s health in as many areas as possible – responsibly, sustainably and comprehensively. Our brand strategy is centred around the Health Family’s mission:

***“Together, we take care of improving people’s health in as many areas as possible.***

***With our healthcare solutions consisting of pharmaceutical therapies, digital treatments and nutritional concepts, we aim to provide patients with the best possible care during every stage of their disease.”***

*From left to right:*  
**Dr. med. Sigurd Pütter  
Gustav Pütter**



*From left to right:*  
**Dr. med. Katja Pütter-Ammer  
Dr. med. Dr. oec. Richard Ammer**

The motto ‘Together we take care’ reflects the company’s long-standing culture of caring, which dates back more than 75 years. It highlights what drives us: proximity to people, responsibility for patients and partners, and the conviction that genuine health is more than just the sum of individual therapies.

We thus understand health in a comprehensive sense. Besides **physical and mental health, social and environmental health** are also an inseparable part of our commitment.

This expanded understanding of health is the basis of our work and our goal of developing increasingly comprehensive solutions.

We thus combine our core competences in pharmaceutical therapy in the field of physical/mental health with evidence-based digital treatments and treatment-accompanying nutritional concepts. This results in integrated, patient-oriented healthcare solutions that provide support during every stage of disease and sustainably improve quality of life.

Social health focuses on Katja Pütter-Ammer’s private commitment in establishing the Katja Pütter-Ammer Foundation, with the aim of promoting mental health in schools and children’s day care centres. MEDICE also promotes sport and culture through a wide range of (mostly regional) projects as part of social health. In the field of environmental health, the specially founded sustainable4U GmbH works to enhance natural spaces, promote biodiversity, develop sustainable free gifts, design sustainable events and protect resources.

The values of the MEDICE Health Family – future-focused, value-creating and family-oriented – guide the company in this.

With this attitude and our mission, we are shaping the future: as the Health Family that takes a comprehensive approach to health – and acts accordingly.

**Dr. med. Katja Pütter-Ammer  
Dr. med. Dr. oec. Richard Ammer**



*“With our healthcare solutions consisting of pharmaceutical therapies, digital treatments and nutritional concepts, we aim to provide patients with the best possible care during every stage of their disease.”*

*“Together, we take care of improving health in as many areas as possible.”*

*Interview with Dr. med. Katja Pütter-Ammer,  
Managing Partner of the MEDICE Health Family*

**QUESTION: IN RECENT YEARS, MEDICE HAS TRANSFORMED FROM A PHARMACEUTICAL-ONLY MANUFACTURER INTO A COMPANY THAT – IN LINE WITH THE FIRST SENTENCE OF YOUR MISSION – AIMS TO IMPROVE PEOPLE’S HEALTH IN AS MANY AREAS AS POSSIBLE. YOU CALL YOURSELF ‘MEDICE – THE HEALTH FAMILY’. HOW DID THIS TRANSFORMATION COME ABOUT?**

**PÜTTER-AMMER:** As we can all see, the world is currently changing enormously. Topics such as digitalisation, AI, the awareness of sustainability and people’s increasing interest in healthy nutrition are important examples. As entrepreneurs, my husband and I are firmly convinced that you also have to change as a company when faced with such a radical transformation. We asked ourselves how we can offer further added value to patients, people and also society in this new environment. The MEDICE Health Family, with its overarching concept of health, was our answer.

**QUESTION: THIS MEANS THERE WAS ONE BIG STRATEGIC PLAN TO UNDERGO TRANSFORMATION A FEW YEARS AGO?**

**PÜTTER-AMMER:** No, on the contrary – there was not one big plan, but rather it was a change in small steps – oriented towards our mission. We seized the opportunities that arose and gradually developed further, always with the aim of improving patient care and being there for people’s health.

**QUESTION: FOR YOU, HEALTH HAS 3 SIDES, THE PHYSICAL/MENTAL, THE ENVIRONMENTAL AND THE SOCIAL SIDE. WHAT FORM DOES YOUR ENTREPRENEURIAL COMMITMENT TO PEOPLE’S PHYSICAL/MENTAL HEALTH TAKE?**

**PÜTTER-AMMER:** Our contribution to the physical/mental health of patients is at the very heart of our business activities. Here, in line with the second sentence of our mission, we develop healthcare solutions for patients that consist of our core business, innovative pharmaceutical therapy, as well as of evidence-based digital treatments and nutritional concepts. Pharmaceutical therapy is the starting point in this – and it will remain this way in the future, too. However, digitalisation and the Digital Healthcare Act are creating new ways of offering patients scientifically validated digital therapies. This allows us to reduce care gaps. We also believe in the power of nutrition and want to improve patients’ health and well-being with our nutritional concepts.

**QUESTION: DO YOU HAVE AN EXAMPLE OF HOW PATIENTS CAN BE SUPPORTED WITH THE NEW HEALTHCARE SOLUTIONS DURING EVERY STAGE OF THEIR DISEASE?**

**PÜTTER-AMMER:** We have been committed to children, adolescents and adults with ADHD for over 25 years. This is based on an innovative pharmaceutical portfolio. Nevertheless, the parents of children who are suspected of having ADHD or a corresponding diagnosis still face major challenges today. The family situation is made significantly more difficult by the fact that they often have to wait months for their children to receive the correct treatment. We can now help these parents in an innovative

way based on digital therapies by having a positive influence on parenting on a daily basis with the digital health application hiToco®, thereby reducing the child's associated symptoms. This enables guideline-compliant treatment based on evidence and supported by studies.

We also develop nutritional concepts and routines for a healthy daily diet and a good breakfast.

**QUESTION: ANOTHER PILLAR OF YOUR COMPREHENSIVE CONCEPT OF HEALTH IS YOUR CONTRIBUTION TOWARDS ENVIRONMENTAL HEALTH. WHAT DO YOU UNDERSTAND BY THIS?**

**PÜTTER-AMMER:** We want to make our contribution towards a healthy environment, as this has been shown to have an influence on people's health.

**QUESTION: WHAT EXACTLY ARE YOUR INITIATIVES HERE?**

**PÜTTER-AMMER:** In our comprehensive sustainability report, we see that sustainability has already been anchored into our activities for generations. This allows us, among other things, to demonstrate our much lower CO2 emissions in the industry comparison. Compared to the previous year, we have also recorded a reduction of 16.1%. However, it goes even further than that, as I founded a dedicated company to focus on sustainability – sustainable4U.

**QUESTION: WHAT DOES SUSTAINABLE4U DO?**

**PÜTTER-AMMER:** sustainable4U develops holistic, future-focused solutions relating to nutrition and the environment. The focus here lies on conserving natural spaces and promoting biodiversity, alongside healthy employee and guest catering and developing sustainable free gifts, designing sustainable events and protecting resources.

**QUESTION: ANOTHER EXAMPLE IS SOCIAL HEALTH. WHAT EXACTLY DRIVES YOU HERE?**

**PÜTTER-AMMER:** The focus is currently my private commitment in establishing the Katja Pütter-Ammer Foundation. The foundation offers evidence-based kick-off presentations and coaching relating to mental health for primary schools and children's day care centres. Our aim is to support teachers with proven strategies in order to manage challenging behaviour in children, promote a positive learning environment and boost their own mental health.

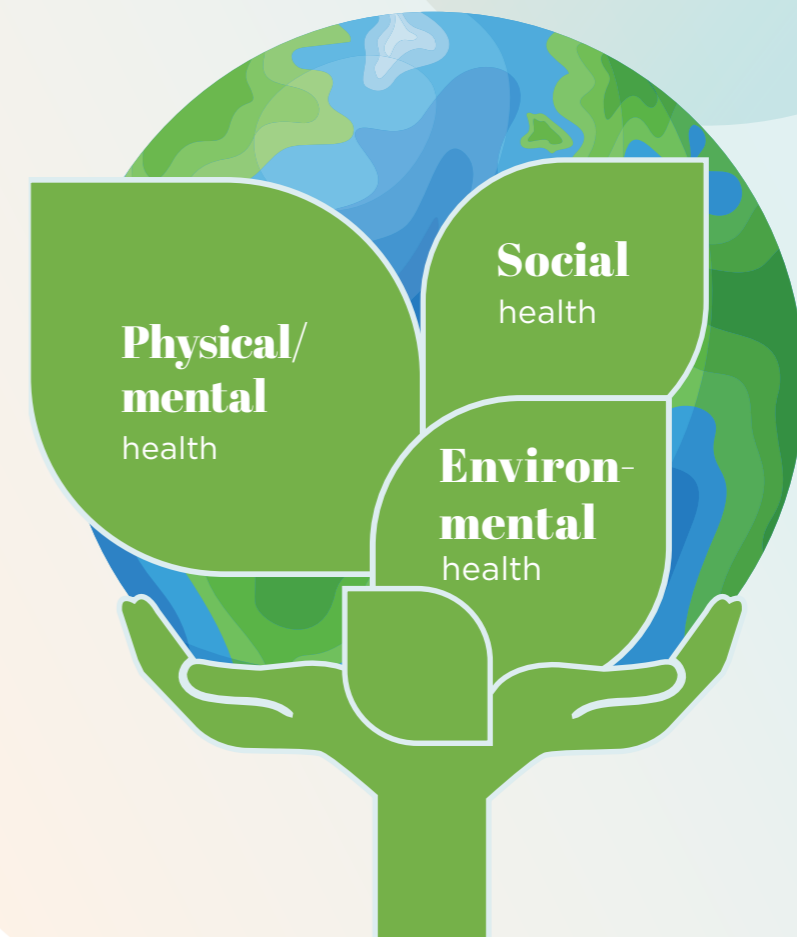
In addition, we have been committed to society and people's social health for generations by promoting sport and culture.

**QUESTION: WHAT DOES THIS MISSION MEAN FOR YOU PERSONALLY?**

**PÜTTER-AMMER:** The mission is the reason I get up every morning full of energy and joy, in order to make my entrepreneurial contribution towards the three dimensions of health every day. Particularly important is the 'together we take care' because it shows that the mission involves our whole company, our partners and our patients. That is what our Health Family stands for!

The mission is underpinned by our three values: future-focused, value-creating and family-oriented. I am convinced that, with the three sides of health, we not only have a future-focused business model but also create value for patients, people and society. In our family-run company, now in its 3rd generation, our values offer guidance and solidarity. In this way, we are creating a strong basis on which to continue standing together for a healthier world.

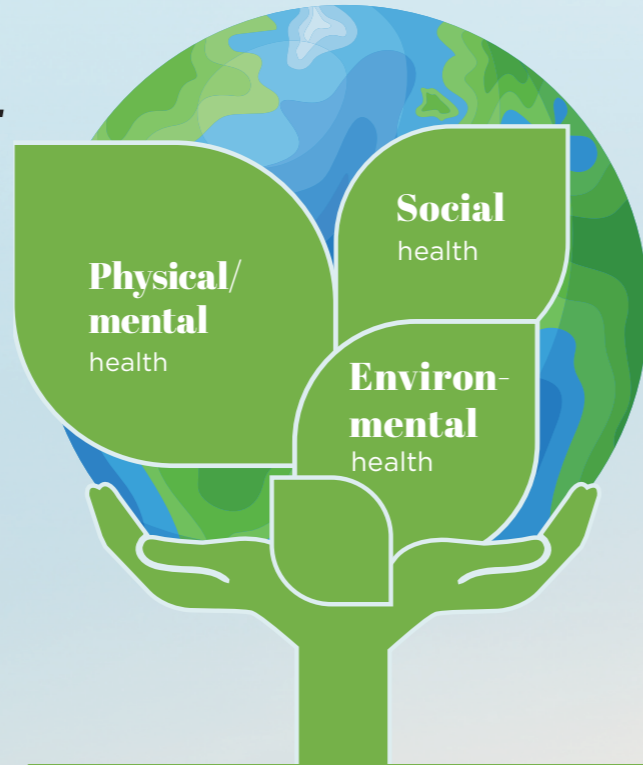
*“For us, health consists of 3 dimensions. The physical/mental, the social and the environmental dimension.”*





# Our understanding of health

Health comprises much more than just the absence of illness. It results from the interaction between a person's physical and mental condition, social relationships and an intact ecological environment. For the MEDICE Health Family, this expanded understanding of health determines our actions. It forms the triad of our understanding of health: **physical/mental, social and environmental health.**



**Our core business is and remains the development and manufacture of high-quality prescription and over-the-counter pharmaceuticals.** With our well-researched and evidence-based pharmaceuticals, we contribute to the medical security of supply in Germany and in our international markets. As our key competence, pharmaceutical therapies will also be the basis and focus on our business in the future.

To further improve patient care, we are developing clinically validated multimodal healthcare solutions based on our pharmacological expertise. These are created through the synergistic interaction of pharmaceutical therapies, evidence-based digital treatments and nutritional concepts.

We thus help to improve therapies, reduce care gaps and support patients and doctors during every stage of the disease.

## Physical and mental health



## Social health

With the **Katja Pütter-Ammer Foundation** that she founded in 2025, our managing partner is also setting a clear example of social involvement as a private individual.

The aim of the foundation is to promote mental health in schools and children's day care centres.

Teachers and educational specialists receive practical support through scientifically validated presentations and coaching in order to implement preventative measures in everyday life. This gives them the necessary knowledge and tools to empower both the children and themselves in a targeted manner.

Moreover, as a family company, we have been supporting various projects that promote solidarity, exercise and cultural exchange for decades, with a focus on children and adolescents.



You can find out more about the **Katja Pütter-Ammer Foundation** here

Scientific evidence shows that human health is determined by the health of the environment. This is why environmental responsibility plays a central role at the MEDICE Health Family: from production and nutrition, from employees and guests to promoting biodiversity and to sustainable free gifts and events.

We thus combine environmental responsibility with our understanding of health. We are convinced: sustainable health can only be achieved when society and business act in unison to the benefit of the environment - both today and for coming generations.

## Environmental health



This will take you to our sustainability report



You can find out more about our sustainability subsidiary **sustainable4U** here



*“With our healthcare solutions consisting of pharmaceutical therapies, digital treatments and nutritional concepts, we aim to provide patients with the best possible care during every stage of their disease.”*

## *Health is more than just medication*

*Interview with Dr. med. Dr. oec. Richard Ammer, Managing Partner of the MEDICE Health Family*

**QUESTION: DR. AMMER, YOU ARE NOT ONLY AN ENTREPRENEUR BUT ALSO A DOCTOR AND HAVE WORKED AT MAJOR UNIVERSITY HOSPITALS IN MUNICH, MÜNSTER AND BOSTON, HARVARD UNIVERSITY (USA) – BOTH AS A CLINICIAN AND WITHIN RESEARCH. WHAT IS IMPORTANT TO YOU WHEN IT COMES TO DEVELOPING AND DESIGNING A PHARMACEUTICAL MANUFACTURER?**

**AMMER:** I joined MEDICE because I knew that Katja and I could develop great strength together. We have focused on our strengths and positioned MEDICE as a recognised niche provider. This meant being able to offer a biosimilar epoetin within our nephrology activities and addressing the neglected topic of ADHD in an ethically correct manner with a good portfolio approach within paediatrics. And, naturally, also pursuing ADHD in adults as a new indication, which was already recognised as an entity in the USA at that time. In addition, we required a broader portfolio for self-medication in pharmacies so that we could balance out our risk with regard to seasonality and prescription medications in the reimbursement market.

I see a focus within development on scientific quality and an evidence-based approach, patient safety and ethics, quality in manufacturing and process design, regulatory excellence, interdisciplinary collaboration, economic and strategic aspects. Although doctors primarily think scientifically, they value the sustainable financing of clinical pro-

grammes, realistic product strategies with a clear medical need, a focus on therapeutic areas in which real care gaps exist and a focus on actual clinical benefits.

**THE FLAGSHIP PRODUCTS MEDIKINET® AND MEDIKINET® RETARD WERE DEVELOPED AT THE ISERLOHN SITE OVER 20 YEARS AGO UNDER YOUR GUIDANCE. IS THAT NOT AN EXTRAORDINARY ACHIEVEMENT FOR A MEDIUM-SIZED ENTERPRISE WHEN YOU LOOK AT THE ADDED VALUE THAT THIS CREATED FOR ADHD THERAPY?**

**AMMER:** MEDICE brought Medikinet® short-acting tablets onto the market as early as 2000. This is a generic Ritalin with good patient management support, patient diaries and tools for structured feedback from teachers and parents. Certainly also added value. It was paediatricians who told our sales representatives in the 1990s that there was no need to discuss Meditonsin® for colds, but that no one was addressing the topic of ADHD. However, it was only the extended duration of action with Medikinet® retard that brought noticeable therapeutic added value: the medication containing methylphenidate, a psychostimulant controlled under narcotics law, stays in parents' hands thanks to its double duration of action; there is no need for a second dose during school hours, which is very difficult to implement in practice for a child with ADHD. And, following three phase III trials, our Medikinet® adult was also the first ADHD medication approved in Germany to treat adults, which required us to transfer all of the scales from Anglo-American into European languages and validate them with studies. The added value here lay

*“Multimodal therapies are the key to supporting patients – and noticeably making their lives better.”*

**Dr. med. Dr. oec. Richard Ammer**





in making the established diagnostic tools accessible to Germany and Europe as well. In short, validated instruments and a broad portfolio highlight why MEDICE has achieved a leading position with 50% of prescriptions in Germany and 25% in Europe. We must strive to maintain this.

**QUESTION: MEDICE IS A FULLY INTEGRATED COMPANY WITH LARGE PRODUCTION SITES IN ISERLOHN AND RINGELHEIM. IMPORTANT, WELL-KNOWN PHARMACEUTICALS SUCH AS DORITHRICIN®, REMIFEMIN®, MEDITONSIN® AND ADHD MEDICATIONS SUCH AS MEDIKINET® AND ATTENTIN® ARE MANUFACTURED IN GERMANY. WHAT DOES THIS MEAN FOR YOU AND IS THIS FUTURE-PROOF?**

**AMMER:** A fully integrated company covers the entire value creation chain itself, with Research & Development, Production (i.e. not only final approval as the last manufacturing step), Quality Assurance and Sales & Brand Management. This is a model that many companies in Europe no longer pursue, but instead follow a global sourcing approach and rely on production in the Far East. With our value creation in Germany, we are making important contributions as a healthcare and commercial company and uphold high quality and safety standards, as German and EU regulations are among the strictest in the world. There is less risk of quality problems or supply chain interruptions, so it is a contribution towards supply chain security in that we can respond quickly and flexibly to demands.

For me, this model is very future-proof if it is managed with the correct strategic approach and handles opportunities and challenges well. With its fully integrated structure and German production, MEDICE has a high degree of resilience to supply chain risks and a strong quality and brand position in the trend towards re-industrialisation in Europe. Even though, to date, price has been the only criterion used in calls for tenders.

**QUESTION: DR. AMMER, YOU TALK OFTEN OF 'MULTIMODAL THERAPY WORLDS'. WHAT DO YOU UNDERSTAND BY THIS?**

**AMMER:** Multimodal therapy worlds is a modern term from healthcare and describes a comprehensive, interconnected treatment approach that intelligently combines several treatment forms, disciplines and digital and analogue elements to care for patients in a comprehensive and more sustainable manner. It is not only about several therapies, but about integrated, coordinated therapy environments that accompany the patient in everyday life. A multimodal therapy world is a comprehensive care system combining the following features:

**1. Several therapy forms (multimodal):**

Pharmacotherapy with pharmaceuticals, psychotherapy, coaching, physiotherapy, nutrition, exercise, digital applications/apps, telemedicine, training & psychoeducation.

**2. Interdisciplinary collaboration:**

Doctors, therapists, psychologists, nurses, coaches, digital providers, pharma - working in a joined-up manner.

**3. Integration of the patient's everyday life:**

The treatment accompanies the patient via various channels - clinic, practice, home, smartphone, coaching.

**4. Personalisation:**

Therapy is becoming adaptive: The combination of methods is individually coordinated to the patient's needs.

**5. Continuous monitoring and adjustment:**

Digital tools (apps, wearables), regular contact with doctors, feedback loops. This creates care that takes the whole person into account.

**QUESTION: CAN YOU GIVE EXAMPLES OF HOW, SPECIFICALLY, MEDICE IMPLEMENTS THIS APPROACH?**

**AMMER:** For us, multimodal means that we connect various components to each other: pharmaceuticals, digital treatments and - where appropriate - also nutritional concepts. In the field of Mental Health, especially for ADHD, we combine classic pharmaceuticals such as Medikinet® or Attentin® with digital services such as the parent training hiToco® or attexis®. For sleep disorders, we offer Mellozzan®, our melatonin preparation for children with sleep disorders, together with the sleep app hiPanya®. The Digital Healthcare Applications<sup>1</sup> from Selfapy® offer online programmes that give patients psychological support - without having to wait until their appointment with the specialist or as an integral component during and between psychotherapy sessions. Another example is nephrology: here, we combine pharmaceuticals with nutritional concepts or combine our anaemia medications (Vafseo® and Abseamed®) with our MediOrganizer app as a digital guide for dialysis patients.

**QUESTION: WHAT ROLE DOES SELF-MEDICATION PLAY HERE?**

**AMMER:** We also draw on multimodal approaches in the field of PCC - Primary & Consumer Care. We support women in the menopause not only with our proven preparation Remifemin®, but also with the digital application femfeel®, which offers them valuable support, which is why some insurance companies directly conclude contracts for this with companies and customers. Within digestive health, we developed the Medibiom® programme - a combination of app, nutritional strategy and special pre- and postbiotics. In this way, we create concepts for those affected that are suitable for everyday use and go far beyond medication.



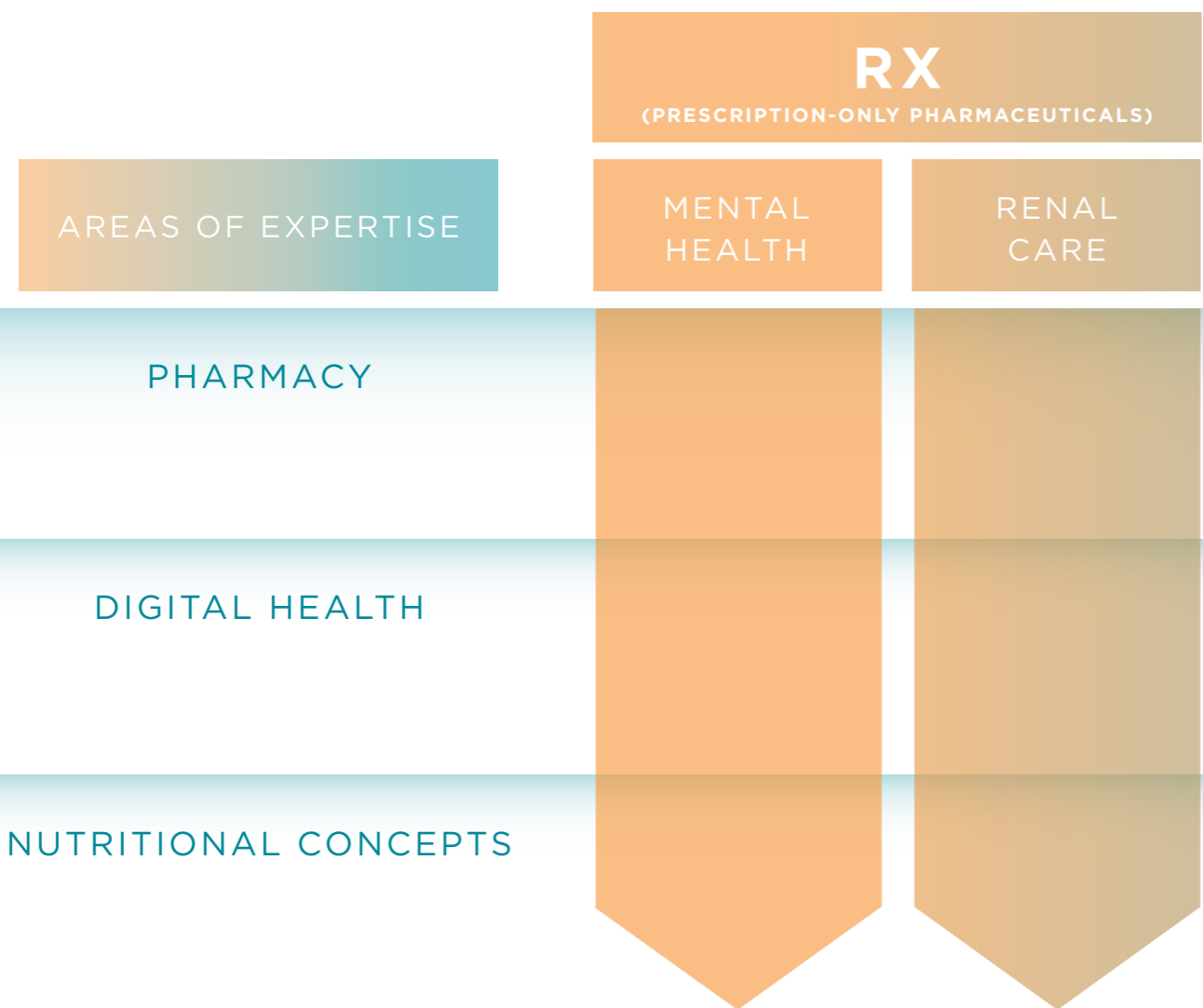
**QUESTION: IN YOUR OPINION, HOW WILL 'MULTIMODAL MEDICINE' DEVELOP?**

**AMMER:** I am convinced that the future belongs to integrated care concepts. Patients, doctors and therapists expect solutions that work together. Digital technologies, nutrition and classic pharmacology will merge together even more closely. And it is at precisely this interface that we see our job: creating a healthcare system that really places the person at the centre, improves care and boosts efficiency.

<sup>1</sup>Approved by the German Federal Institute for Drugs and Medical Devices.



# Multimodal healthcare solutions

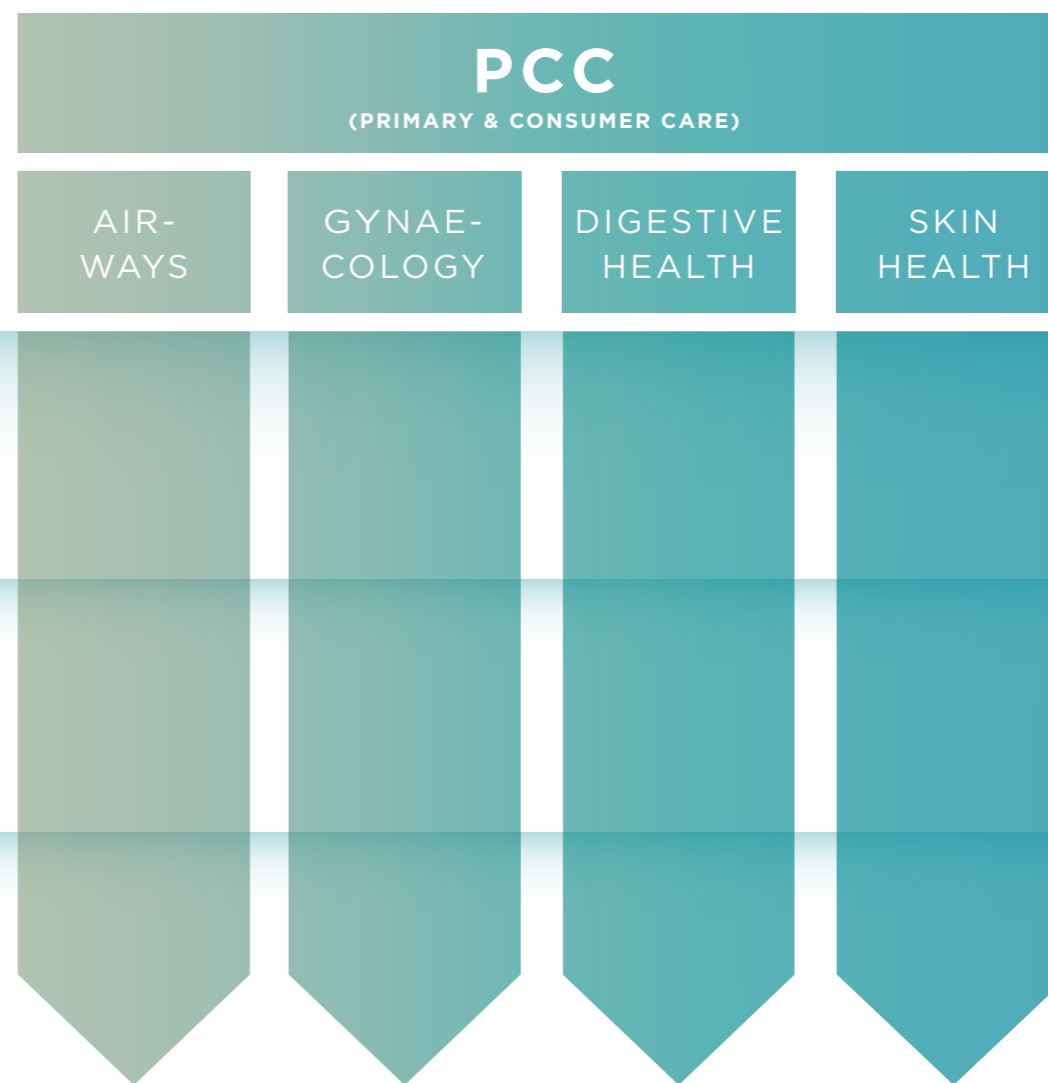


INDICATION-BASED

## PEOPLE ARE AT THE HEART OF WHAT WE DO

For over 75 years, MEDICE has stood for collaborative efforts to improve people's health. At our sites in Iserlohn and Ringelheim, we develop and manufacture high-quality pharmaceuticals and medicinal products - in the prescription sector (RX) as well as in self-medication (PCC) - and successfully distribute them nationally and internationally.

People are at the heart of what we do. Our aim is to support patients in the best possible way during every stage of their disease. To this end, we develop clinically validated multimodal healthcare solutions based on our pharmacological expertise, combining pharmaceutical therapies, digital treatments and nutritional concepts to create comprehensive therapy systems. In doing so, we help to reduce care gaps and sustainably improve the quality of life of those affected.



HEALTHCARE SOLUTIONS





MENTAL  
HEALTH

# Mental Health



## MULTIMODAL HEALTHCARE SOLUTIONS FOR MENTAL HEALTH

With the new **Mental Health** division, MEDICE is combining its decades of experience in mental health to create a central pillar of its multimodal healthcare solutions. Our goal is clear: we support people in all phases of life with integrated, evidence-based and individually adaptable therapy concepts. We view health in a comprehensive manner - from pharmacological care and digital therapies to nutritional concepts.

Our aim is to offer patients the optimum mix of pharmacological and non-pharmacological therapies - coordinated to their life situation, their needs and the individual progression of their illness. In dialogue with healthcare practitioners and digital partners, we create an integrative approach that empowers, enables and supports people in the long term.



### ADHD - PIONEERING WORK WITH RESPONSIBILITY

Over 25 years ago, a journey began at MEDICE that has had a lasting impact on the company: its beginnings in ADHD therapy with Medikinet®. What began with a bold decision and a great deal of pioneering spirit is now a significant chapter in our history – and a symbol of our commitment to take responsibility when it comes to helping people.

Close collaboration with doctors, therapists, parents and those affected has resulted in a unique field of expertise over the years – with a broad portfolio of pharmacological, digital and educational solutions for children, adolescents and adults with ADHD.

### PHARMACEUTICAL PORTFOLIO

Today, MEDICE is the European market leader in the field of ADHD\* – with a broad therapy spectrum coordinated to individual needs:

- **Medikinet®** – For individual initial dosing in 5 mg increments
- **Medikinet® retard** – With a rapid onset of action and a duration of action of around 8 hours
- **Medikinet® adult** – The most-used methylphenidate formulation for adults, for flexible 2x administration from 8 to 16 hours
- **Kinecteen®** – Long-acting MPH preparation with a duration of action of up to 12 hours
- **Attentin®** – The first finished medicinal product containing dexamphetamine on the market, for patients with an inadequate response to MPH
- **Agakalin®** – Atomoxetine with a continuous 24-hour effect, as well-tolerated film-coated tablets
- **Mellozzan®** – The only melatonin to treat ADHD-based sleep disorders in conjunction with digital support

\*Based on sales in standard units, IQVIA Q4/2024



### MULTIMODAL THERAPIES - DIGITAL, CONNECTED, EVIDENCE-BASED

Despite clear recommendations in medical guidelines, only around 6.8% of children with ADHD actually receive multimodal therapy today – i.e. a combination of pharmacological and non-pharmacological treatment. MEDICE already fulfils this guideline-compliant standard of multimodal treatment today – with a wide range of digital therapies that actively involve those affected and relatives in the treatment:

- **hiToco®** – The approved Digital Healthcare Application<sup>1</sup> for families with children between 4 and 11 years of age with ADHD; enhances parental skills and verifiably improves symptoms in children
- **attexis®** – The first permanently approved Digital Healthcare Application<sup>1</sup> for adults with ADHD, which helps them directly cope with challenges in everyday life
- **Selfapy®** – Offers evidence-based, digital therapy programmes for depression, anxiety, bulimia nervosa and binge eating. The programmes are approved as Digital Healthcare Application<sup>1</sup>, suitable for prescription and reimbursed by statutory health insurance companies.

These applications represent a new form of healthcare: accessible at all times, scientifically verified and individually adaptable.

**Our promise:** to provide patients with multimodal support for the best possible, comprehensive care.

This will take you to our Mental Health brochure



### NUTRITION - THE OFTEN UNDERESTIMATED PILLAR OF MENTAL HEALTH

Our mental health is the result of complex interactions between biological, psychological and social factors. One often underestimated influencing factor is nutrition.

Many scientific studies show that a balanced diet can have a positive influence on mental health – while unfavourable eating habits increase the risk of psychological problems.

This is why MEDICE sees nutrition as an integral part of a comprehensive therapy concept. Together with scientific partners, we develop practical nutritional solutions that support therapy success and promote mental well-being – from digital nutritional programmes for children and targeted nutrient preparations to microbiome-based interventions.

<sup>1</sup>Approved by the German Federal Institute for Drugs and Medical Devices.



RENAL  
CARE



# Renal Care

## MULTIMODAL HEALTHCARE SOLUTIONS FOR RENAL CARE

For more than 35 years, MEDICE has been committed to **renal care** with passion and responsibility. What once began with the targeted development of our own nephrology expertise has now become a comprehensive range of therapies for patients with chronic renal disease – especially relating to dialysis.

Our aim is to noticeably improve the quality of life of those affected while also supporting doctors, nursing staff and relatives in the best possible way. After

all, kidney disease never only affects the body – it changes the entire life of those affected and that of the people around them.

This is why we at MEDICE combine pharmaceutical expertise with digital and nutritional medicine components. This creates multimodal healthcare solutions that not only treat symptoms but consider the person as a whole.



### A GROWING MEDICAL CHALLENGE

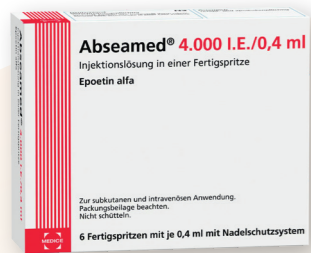
Chronic kidney disease is among the biggest health problems of our time – often exacerbated by diet and by a lifestyle that involves too little exercise. Its prevalence is growing worldwide – in Germany alone, around one in every ten adults is affected, often unknowingly. Chronic kidney disease affects other organs and their function and should thus be understood comprehensively. Our aim is to provide innovative therapeutic solutions that make everyday life easier and improve the quality of life of those affected.

### A STRONG PORTFOLIO FOR BETTER CARE

Our comprehensive portfolio covers central therapy components, such as for renal anaemia, the bone metabolism, hyperkalaemia and vitamin supplementation:

- **Vafseo® (Vadadustat)** – An oral HIF stabiliser with an innovative mode of action to stimulate endogenous erythropoiesis, based on research into hypoxia in cells that was awarded the Nobel Prize in 2019.<sup>1</sup>
- **Abseamed®** – The first approved epoetin alfa biosimilar in the EU.<sup>2</sup>
- **FerMed®** – Proven iron sucrose for intravenous iron infusion.
- **Nephrotrans®** – Sodium hydrogen carbonate in a modified-release form for pH correction in metabolic acidosis.

We offer Velariq®, a specialised solution to treat detrusor overactivity, for patients with paraplegia, spina bifida (neural tube defect), multiple sclerosis, Parkinson’s disease or stroke who suffer from neurogenic bladder dysfunction due to spinal cord injury. With local treatment in the bladder, the established drug oxybutynin shows a favourable efficacy/tolerability profile.



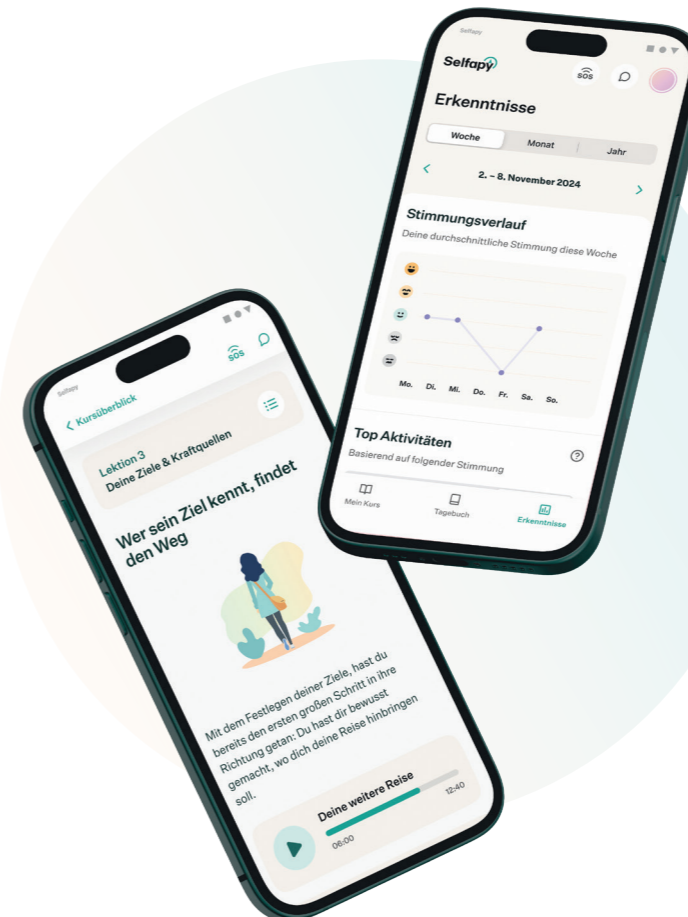
### SHAPING THE FUTURE - WITH PATIENTS IN MIND

Renal Care is an example of MEDICE’s development into a provider of integrated healthcare solutions. We combine scientific innovation with professional care and community involvement – with our mission in mind: **together for a healthier world.**

### MULTIMODAL THERAPIES - ENTRY INTO PSYCHONEPHROLOGY

For us, healthcare does not end with the pharmaceutical. We take a comprehensive approach to therapy – covering pharmacology, digital solutions and nutritional medicine:

- The approved digital health applications from Selfapy® offer digital therapy programmes for depression and anxiety – symptoms that often accompany chronic illnesses. This paves the way for us to begin working within psychonephrology.
- The free MediOrganizer® app allows patients to easily manage their medication, check their dosage times and thus improve adherence to their treatment.
- In addition, we work with scientific partners to develop nutritional medicine concepts that support treatment success, prevent malnutrition and boost mental well-being.



This will take you to our Renal Care brochure





# Primary & Consumer Care



## EVERYDAY HEALTH

The field of **Primary & Consumer Care (PCC)** at MEDICE stands for high-quality healthcare solutions that accompany people in everyday life.

Based on decades of pharmaceutical experience, MEDICE has developed a versatile portfolio that combines quality, efficacy and trust. Our products help to effectively treat everyday illnesses, strengthen the body's own defences and maintain health in the long term.

The aim of our commitment is to consistently strengthen basic medical care and prevention. With innovative and fast-growing products in the areas of cold & airways, women's health, digestive health and skin health, we succeed in combining medical expertise with everyday relevance. Here, MEDICE contributes to ensuring that health remains a matter of course in everyday life – safe, effective and trustworthy.



### FROM MEDITONSIN TO SOVENTOL - A SUCCESS STORY

What once began with **Meditonsin**® has developed into a real success story. With the acquisition of Rentschler's OTC division in 2006, many well-known brands such as **Soventol**® and **Dorithricin**® made their way into the MEDICE portfolio. Through a majority stake in the traditional company **Schaper & Brümmer** in 2021, expertise relating to herbal remedies was further expanded. Today, MEDICE is a strong brand partner in pharmacies - with a portfolio combining tradition, research and innovation.

Hallo Wechseljahre  
Tschüss Beschwerden

**Remifemin plus** Johanniskraut  
100 Filmtabletten

**Die Nr. 1** bei Wechseljahresbeschwerden

- Remifemin plus Johanniskraut bei:
  - Hitzewallungen
  - Schweißausbrüchen
  - Stimmungsschwankungen

**Stark. Sicher. Ohne Hormone.!**

remifemin.de

SCHAPER & BRÜMMER  
a member of  
MEDICE  
THE HEALTH FAMILY

### A PORTFOLIO THAT INSTILTS TRUST

**GYNAECOLOGY:** Proven herbal remedies such as **Cystinol akut**®, **Aqualibra**®, **Remifemin**®, **Remisens**®, **Femicur**® and the medicinal product **Remifemin**® moisturising cream are special pharmaceuticals catering to the health needs of women. In the field of women's health, we enable our patients to receive comprehensive, indication-specific care by providing integrated digital health solutions (more on the following page). We are committed to improving the quality of life of women and girls by offering them access to the latest medical innovations and technologies.

**DIGESTIVE HEALTH:** Acute diarrhoea is among the most common complaints and can significantly impair everyday life. With **Perenterol**® and **Tannacomp**®, MEDICE offers two proven treatment approaches that specifically target the causes and support natural intestinal function. In addition, within the **MEDIBIOM programme**, innovative concepts are created to promote digestive health - scientifically verified and supported by the Luxembourg Institute of Health. In close cooperation, we develop high-quality fermented products that are effective in the gut for nutrition-based improvement of the microbiome at our phytocompetence centre in Ringelheim.

**SKIN HEALTH:** Whether for sunburn, insect bites or skin irritation - **Soventol**® has represented fast, well-tolerated relief from inflammatory or itchy skin conditions for decades. With **MediGel**® wound and healing gel, MEDICE is supplementing its portfolio with a hydroactive lipogel, which supports natural wound healing with zinc and iron ions and stabilises the skin's pH.

**COLDS & AIRWAYS:** With well-known brands such as **Meditonsin**®, **Dorithricin**®, **Esberitox**® and **Stilaxx**®, MEDICE offers effective relief at every stage of a cold - from the first sore throat to complete recovery. With the new **Meditonsin**® Extract, MEDICE is beginning another chapter in its history: the herbal remedy offers reliable relief from viral colds - natural, effective and well-tolerated.



**GYNAECOLOGY**

**DIGESTIVE HEALTH**

**SKIN HEALTH**

**COLDS & AIRWAYS**

Besides its core indications, MEDICE offers a variety of high-quality preparations for other areas of self-medication - always with the aim of simply and effectively supporting health.

**3-fach stark gegen Halsschmerzen**

**Dorithricin** Halstabletten Classic

- schnell
- spürbar schmerzlindernd
- langanhaltend

MEDICE THE HEALTH FAMILY

2€ Preisvorteil!

Entzündung? Juckreiz?

**Alarmstufe Rot für die Haut.**

**Soventol** Hydrocortisonol 0,5%  
Unsere Nr. 1

soventol.de

MEDICE THE HEALTH FAMILY



### LOOKING TO THE FUTURE WITH PHYTOCOMPETENCE

A key element in the PCC area is the **Phytocompetence Centre at Schaper & Brümmer**. The expertise in herbal medicine built up there over decades is continuously expanded through partnerships with universities and research partners.



### MULTIMODAL HEALTHCARE SOLUTIONS FOR WOMEN

With the established pharmaceutical **Remifemin®** and the **Remifemin® app** that accompanies it, MEDICE offers a modern, multimodal concept to support women in the menopause.

In addition, the digital platform **femfeel®** provides reliable information, dietary recommendations and everyday support - for greater quality of life and self-determination in a sensitive phase of life.



### STRONG PARTNER TO PHARMACIES

Our consistent orientation as a reliable partner to pharmacies is bearing fruit: in the Performance Review of OTC providers by industry publication *markt intern*, German pharmacies ranked us in second place in 2025 - impressive proof of our innovative strength, reliability and cooperative partnership.

### OUR GOAL

**Primary & Consumer Care** stands for health in everyday life - scientifically verified, naturally effective and always focused on people. As part of the MEDICE Health Family, we combine pharmaceutical tradition with an orientation towards the future - and develop solutions that make life a little bit healthier every day.

Our PCC brochure can be found here



## Performance Review OTC Providers 2025



# Made in Germany

Quality and responsibility



“Made in Germany” is much more than just a seal of origin for the MEDICE Health Family – it is a promise. At our sites in Iserlohn and Ringelheim, we develop and manufacture over 35 million packs every year. Here we combine pharmaceutical excellence, modern technologies and high standards of safety and quality.

The decision to keep value creation in Germany is an expression of our responsibility: we secure jobs, invest continuously in new production and logistics structures and thus guarantee security of supply for patients in Germany and abroad.

In addition, “Made in Germany” is also a commitment to sustainability at MEDICE. Short supply chains, high environmental standards and close collaboration with regional partners help to ensure our products are not only effective and safe but also make a major contribution to security of delivery and supply in Germany.



*For us, quality, reliability and responsibility are what truly count – these values are firmly anchored in our DNA and shape our path from a family company to the world’s leading provider of multimodal health-care solutions.*



# Iserlohn

- 1. Links to the motorway A46
- 2. MediGym
- 3. Laboratory and Quality Control
- 4. Distribution complex
- 5. Solar park
- 6. Incoming Goods and warehouse complex
- 7. Production complex

- 8. Old half-timbered house and Friend-Ship headquarters
- 9. Old administration
- 10. Reception
- 11. New administration
- 12. Health Family Park
- 13. Own bee colonies

## Ringelheim site



# Our values guide us

## FUTURE-FOCUSED –

We actively shape advancements in medicine.

## VALUE-CREATING –

We create benefits for patients, healthcare practitioners and society.

## FAMILY-ORIENTED –

We embody solidarity and build trust.

These values strengthen our feeling of togetherness and create a sense of identification. At the same time, they also influence the positive perception of our authentic brand among all stakeholder groups.

### Future-focused

Success Courage  
 Openness Time Skill  
 View Outlook  
 Progress Innovation Future  
 Digitalisation Vision  
 Opportunities  
**Safety\***  
 Groundbreaking Changes  
 Further development  
 Sustainability

#### THE MEDICE HEALTH FAMILY, THAT'S ALL OF US!

As part of the discussion about values, we asked all employees for their interpretation of each term. This has led to association networks that show what a strong and meaningful impact our brand values have. Body, soul, community and nature are firmly intertwined with each other. Only when these dimensions are in harmony is real quality of life achieved – and that is precisely what we are committed to.

#### THE HEALTH FAMILY – TOGETHER FOR A HEALTHIER WORLD

With over 1,300 employees, an international network of doctors, pharmacists and scientists and a clear purpose, the MEDICE Health Family holds an optimum position. What drives us every day is improving health in as many areas as possible – responsibly, sustainably and innovatively.

### Family-oriented

Familiarity  
 Family Responsibility  
 Loyalty Community  
 Trust  
**Solidarity\*** Success  
 Togetherness Security  
 Bonding Understanding  
 Belonging Honesty  
 Respect Appreciation  
 Safety  
 Communication

### Value-creating

MEDICE Growth Meaning  
 Aims Company Respect  
 Appreciation Safety  
 Efficiency Enhancement  
 Future **Success\*** Added value  
 People Sustainability  
 Work Progress  
 Value increase

\* Most-mentioned terms.



**Annick Berreur-Igersheim**  
Managing Director  
People, Culture & Transformation MEDICE

*“We promote a culture in which achievement and togetherness go hand in hand. Every voice counts – open feedback creates trust, innovation and joint success. We develop people and secure an environment that offers psychological security – beyond geographical boundaries. This creates an environment in which teams boldly take on responsibility and grow together.”*



**Eric Neyret**  
Managing Director  
CFO/CDO

*“For me, financial stability, transparency and digital excellence are the basis to create lasting added value for our Health Family. With passion and responsibility, we are making the company fit for our grandchildren, thereby making an important, sustainable contribution to improving the health of people in as many areas as possible.”*

*“Our values are not only a guideline – they are what drive our innovative strength. The courage to try new things and actively shape the future of medical care arises where trust, openness and responsibility are put into practice.”*



**Dr. Uwe Baumann**  
Managing Director  
Primary & Consumer Care



**Dr. Felix Lambrecht**  
Head of Strategic Management, Global Head  
Therapeutic Unit Mental Health and Managing Director Medigital

*“Led by our values, we create real added value for patients, doctors and therapists through future-focused innovation at the interface of pharmacology, psychotherapy, IT and, of course, medicine. All disciplines are combined in a family-oriented manner.”*

*“We develop, produce and distribute our products in line with the highest quality and safety standards. Through continuous, future-focused investments and developments, we guarantee competitiveness, lasting success and security of supply. By creating value and working together as a family, we contribute to advancements in medicine, strengthen our locations and secure the jobs associated with them.”*



**Dr. Reiner Pöstges**  
Head of Production & Technology Division

# Together for a healthier world

Our mission statement briefly outlines the direction we want to take over the next few years. It clearly explains our aspiration and defines a comprehensible goal.

*“Together, we take care of improving people’s health in as many areas as possible.*”

*With our healthcare solutions consisting of pharmaceutical therapies, digital treatments and nutritional concepts, we aim to provide patients with the best possible care during every stage of their disease.”*

*Let’s take care!*



Dr. med. Katja Pütter-Ammer  
Dr. med. Dr. oec. Richard Ammer

