

Introducing our plans for Clach Energy Storage

BayWa r.e. is sharing its early stage plans for Battery Energy Storage System (BESS), known as **Clach Energy Storage**, on land approximately 14 km south of Thurso, in Caithness.

We know there is a lot of ongoing work locally relating to grid upgrades and renewable energy projects. With this in mind, we want to provide **clear and straightforward** information about what this project involves and why the site has been chosen.

Our aim is to keep the community informed as the project progresses and to be open about the considerations guiding our approach.

We value local insight and want the Clach project to reflect what matters to the community. Your feedback will play an important role in shaping the project as it moves forward.



Find out more

As part of our pre-application consultation, residents and local stakeholders are invited to attend our upcoming public exhibition events, where you will have the opportunity to:

- View our early plans for Clach Energy Storage
- Meet the BayWa r.e. team
- Ask questions and share your views
- Learn about the project timeline and next steps

Public exhibitions to be held on:



Date: Wednesday, 28 January

Time: 2pm – 7pm

Location: The Ross Institute, Bridge Street, Halkirk, KW12 6XY



Date: Thursday, 29 January

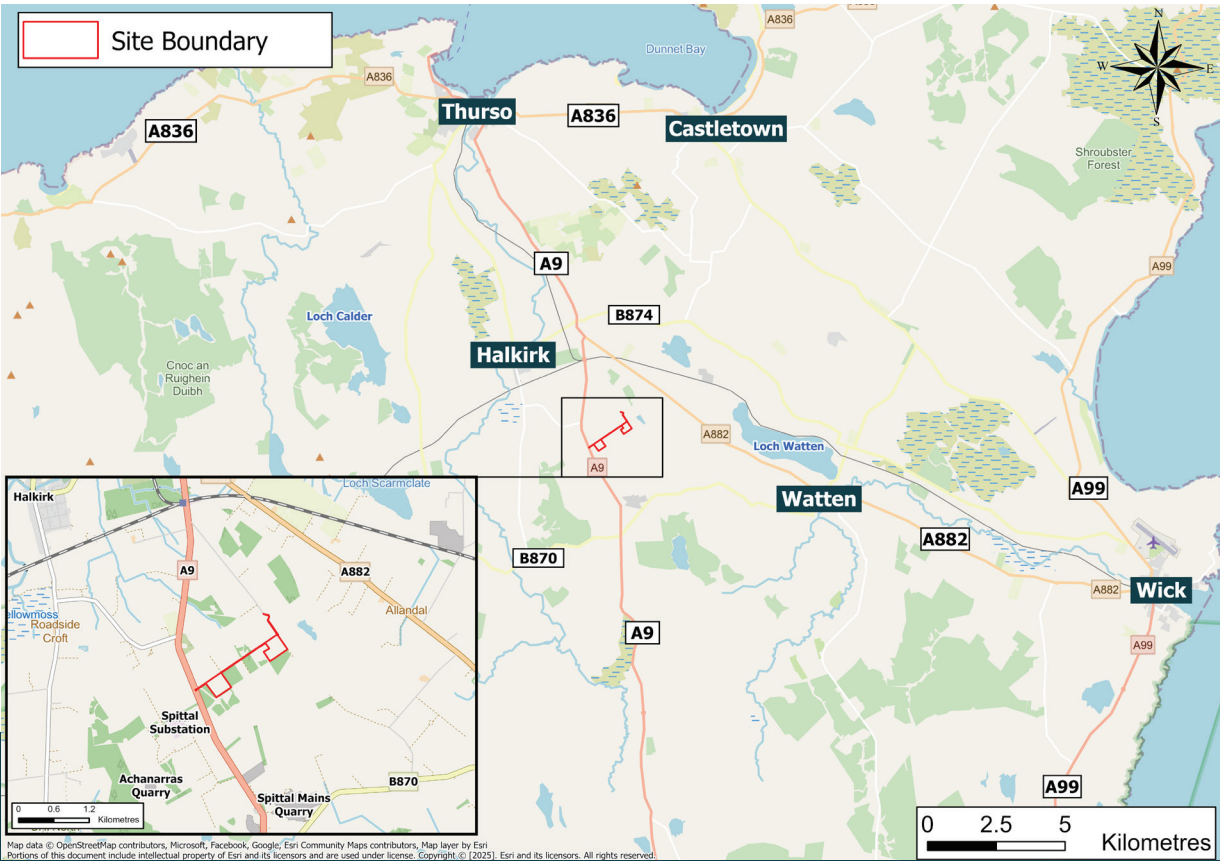
Time: 11am – 2pm

Location: Watten Hall, Watten, Wick, KW1 5YL

About the project

Clach Energy Storage is designed to help manage electricity generated from renewable sources in the north of Scotland. With a **grid connection capacity of 456 MW**, the system will store surplus energy when generation is high and release it when demand increases. This helps make better use of Scotland’s renewable resources and supports a more stable electricity network.

The site



The project area covers 19 hectares / 47 acres, which is roughly the same as 28 football pitches. It sits in two fields approximately 800 m apart, which are currently used for rough grazing. There is existing forestry on the site which will help to screen the project and minimise visual impact on the surrounding area.

An existing overhead power line runs close to the site, and an operational quarry sits between the two fields. The site also benefits from **direct access from the A9**.

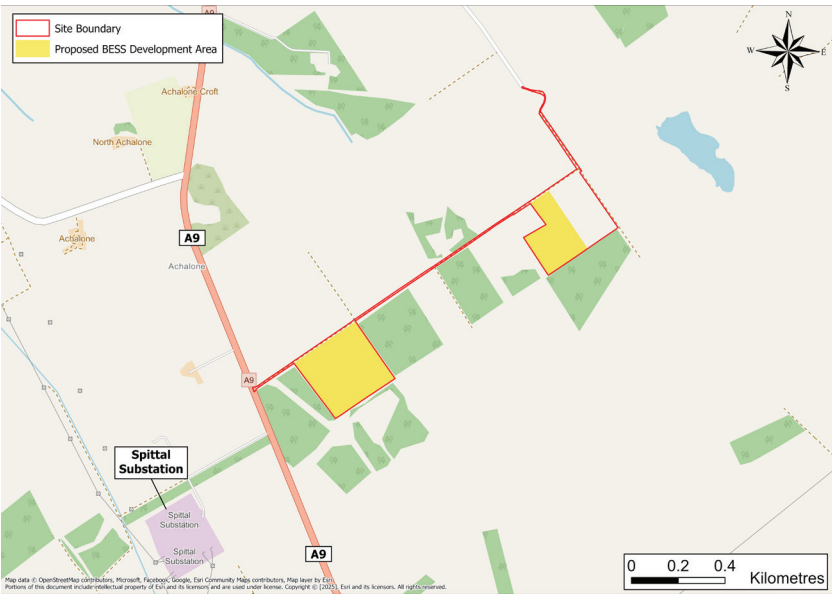
The site is next to SSE’s recently **consented Banniskirk Hub and HVDC converter station**, and the proposed upgraded **Spittal–Loch Buidhe–Beaully transmission line** is expected to pass between the two fields. Being close to this infrastructure helps improve the efficiency of the project.

Why this location?

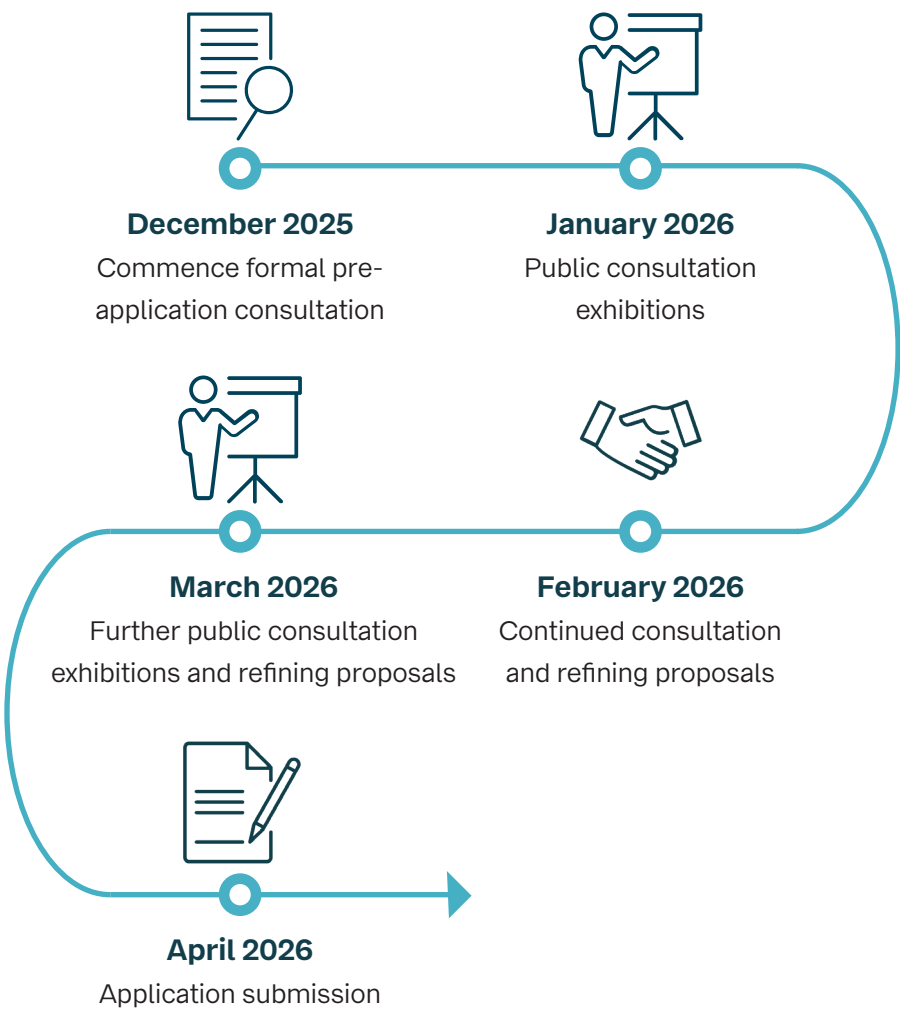
Caithness is an important area for renewable energy, with a large number of onshore wind farms and more offshore wind expected to become operational in the coming years. Because of this, there can be times when more electricity is generated than the electricity grid can handle. A storage project like Clach helps smooth out these peaks and troughs.

What work has been done so far?

The project team has carried out early-stage assessments, including desk-based studies, site visits, and technical surveys. These studies have helped us build an understanding of the local environment and inform our emerging layout for the site.



Indicative timescales and next steps



Who are BayWa r.e. UK?

We are a leading renewable energy company dedicated to developing, managing and operating renewable energy projects across the UK and Ireland. As a subsidiary of the global BayWa group, we bring extensive experience and expertise in renewable energy solutions, including wind, solar and battery storage systems.



Our experience in Scotland

BayWa r.e. has been developing renewable energy projects across Scotland for many years, including wind farms such as Dalquhandy, Broken Cross, and Little Gala.

We have secured planning permission for the Redshaw BESS in South Lanarkshire and are now developing Clach, a new Energy Storage project for the Highlands. These projects support the provision of clean, reliable energy and Scotland’s transition to a low-carbon energy system.

Powering opportunities locally



Opportunities for communities

BayWa r.e UK is proud to invest in the communities that host our projects. We will contribute **£50,000 per year (indexed)** to a dedicated community fund throughout the lifecycle of the project. This flexible fund can support local initiatives, services, education, training, jobs, and sustainability projects. It may also attract additional match funding to increase its impact.

We welcome your ideas on how this fund can best benefit the community.

Opportunities for local businesses

Clach offers exciting opportunities for local businesses with the right skills and services, both during construction and operation.

BayWa r.e UK is committed to working with local companies wherever possible. At recent projects:

- 77% of civils contracts at Dalquhandy Wind Farm and
- 80% at Broken Cross Wind Farm went to Scottish companies, many of them local.

Join our Local Business Register to hear about upcoming opportunities. Please email: info@clach-bess.co.uk



Stay informed and involved

Our upcoming consultation events on the **28 and 29 January** will give you the opportunity to learn more about the project and provide valuable feedback. We look forward to seeing you there.

Contact



0141 291 5170



info@clach-bess.co.uk



www.baywa-re.co.uk/clach

Scan the QR code to visit our website

