



# HMF50HI Series

*The ultimate solution for demanding level control. Multi-function level switches in custom lengths, delivering outstanding flexibility.*

- DIN connector, IP67
- Compact design with Ø50mm flange
- Selectable switch point lengths and contact functions\*



HM 2511



Sensors with REED technology without power consumption, manufactured with the highest quality in our ISO-certified factory in Roslagen, Sweden.

## General description:

HMF50. The float level switches are available with up to two functions in the same unit. It can also be combined with an overtemperature protection. Suitable for oil and other non aggressive liquids.

## Construction:

Flange with four holes, c/c 43mm. Angled connector EN175301-803 style A (former DIN 43650-A) that can be mounted in four different directions. Screw terminals for mounting your own cable. Protection class IP67.

Probe and flange in brass, floats in NBR.



\* We manufacture the sensor in desired lengths. Specify switch points length (mm) and contact function when ordering.

**O** : NO, open at low level, closes rising  
**S** : NC, closed at low level, opens rising  
**V** : NO/NC, change-over  
**T** : Overtemperature protection. NC, opens rising at 70°C ±5

## Options, special on request:

Overtemperature protection with other switching temperature and smaller hysteresis.



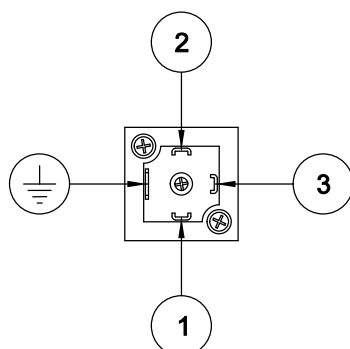
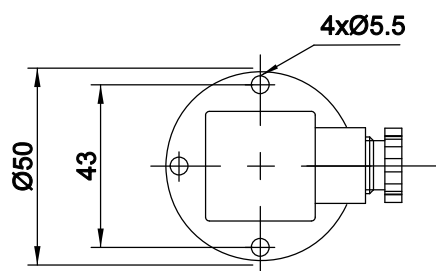
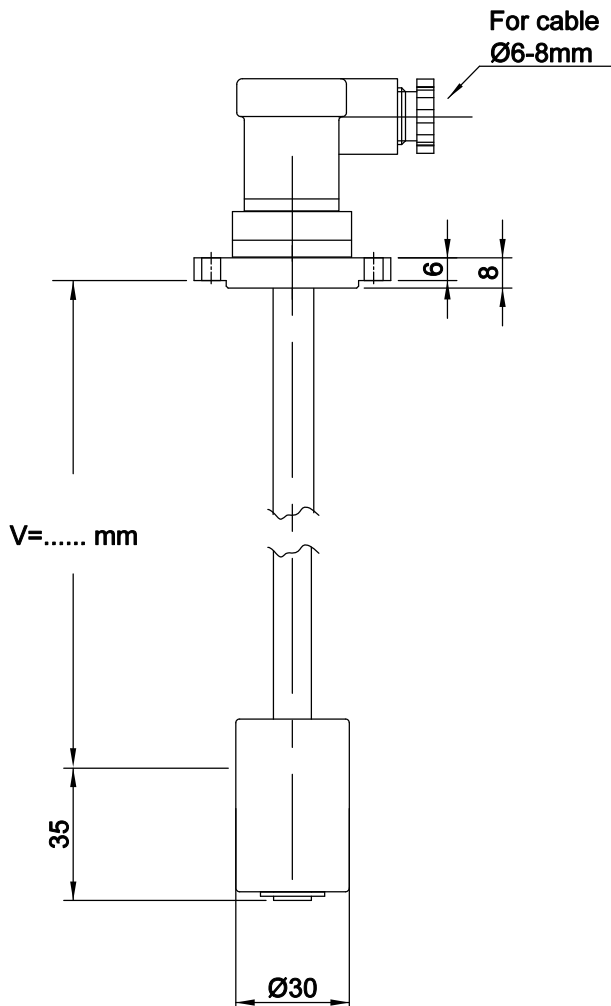
Note! Read this instruction before installation and use

Protective earth



■ = Switch closed

□ = Switch open



#### FEATURES

Float liquid level sensor with REED-technology to activate pumps or valves via relays or PLC. Suitable for oil and other non aggressive liquids

#### MATERIALS

Probe : Brass  
Flange: Brass  
Float : NBR S.G. 0,3  
Gasket : Nitrile  
Connector : EN175301-803 style A (former DIN 43650-A)

Temp. media : -20...+100°C  
Temp. ambient : -20...+70°C  
For use 0-5000m above MSL

#### CONTACT SYMBOLS

V = change over

#### PROTECTION DEGREE

Connector : IP67  
Probe : IP68

#### ELECTRICAL MAX DATA

Contact rating *	60 VA
Voltage	3-230 V AC/DC DC to 60Hz
Current	1 A

\* = resistive load

**WARNING!** If no protective earth is connected to the sensor, the supply voltage must not exceed 48V AC/DC