

HEMOMATIK Sweden

Liquid level and temperature switch

Art.nr. HMC-OT1

O=..... mm, T=70°C

Drawing nr. HMC-OT1

Rev. 4

Approved P.L. 930603

Scale 1:2

Date 921019

Sign. MEM

Rev. date 010827



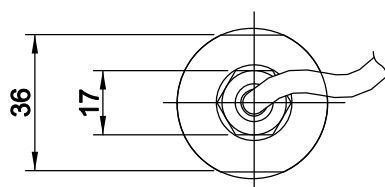
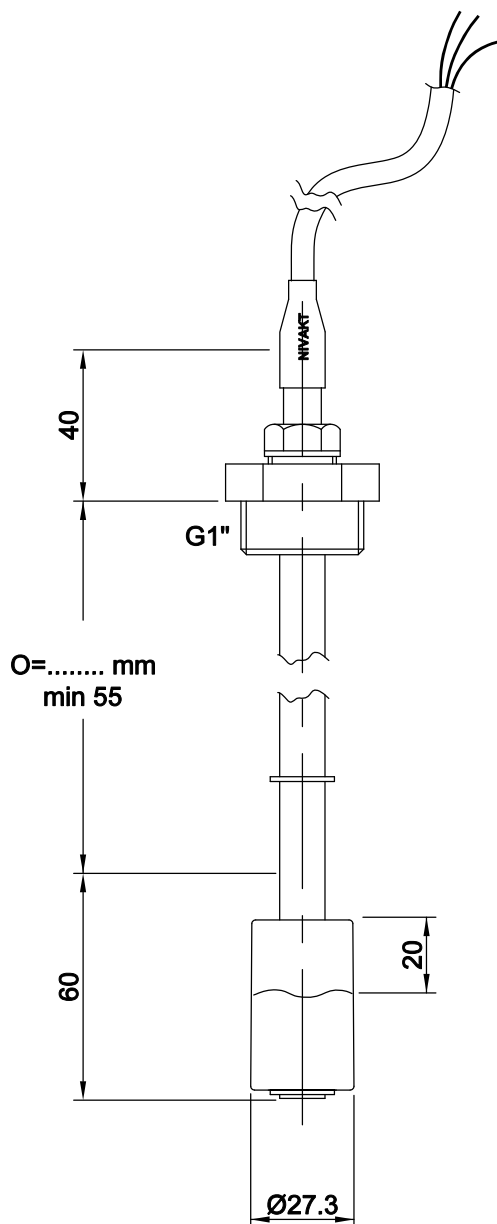
Note! Read this instruction before installation and use

yellow / green
brown
blue



Opens above 70°C.

Temperature in series with brown / blue



FEATURES

Float liquid level sensor with REED-technology to activate pumps or valves via relays or PCs. Recommended for oil and petroleum fluids.

MATERIALS

Stem : Brass
Float : Buna-N (nitrofuel), S.G. 0,3
Fitting : POM C
Cable : 2m / PVC 4x 0.5mm²
Temp. media : -20...+100°C
Temp. ambient : -20...+70°C
For use 0-5000m above MSL

CONTACT SYMBOLS

S = means NC low, NO going upwards
O = means NO low, NC going upwards
V = change over

TEMPERATURE SWITCH

Level sensors may be equipped with built in over-temperature protection, if specified. Standard temperature switches open above +70°C and reset at +50°C.

PROTECTION DEGREE

Outside tank : IP65
Inside tank : IP68

ELECTRICAL DATA

Contact rating *	70 VA
max voltage	3-230 V AC/DC DC to 60Hz
max current	1 A

* = resistive load

WARNING! If no protective earth is connected to the sensor then only voltages of maximum 48V AC or DC may be connected

Rights to the design and drawing belongs to HEMOMATIK Sweden, copyright ©

= Switch closed

= Switch open

This manual is available in pdf format, please contact Hemomatik AB