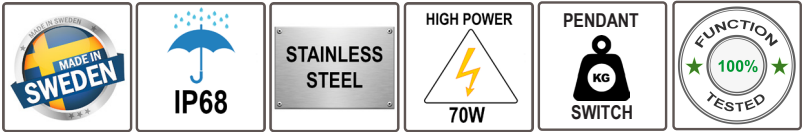


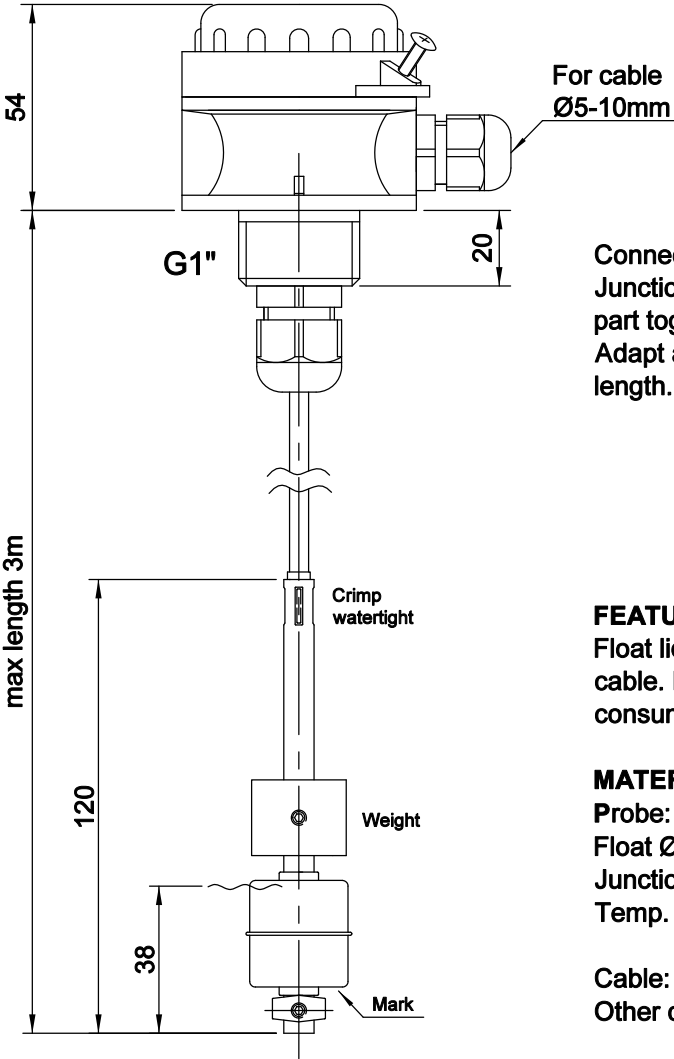
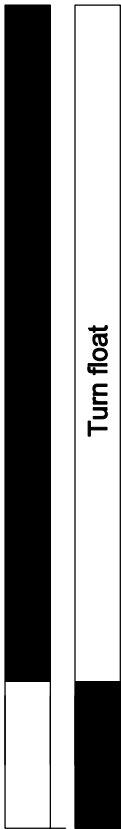
<b>HEMOMATIK</b> Sweden		Liquid Level Switch. Junction box	Art.nr. <b>SUB-MW28X-3M+B</b>	
		Pendant switch with weigth and submersible	Drawing nr.	Rev.
Approved A.N. 240619	Scale 1:2	PUR-cable. Flange and G1"	Date 240619	Sign. AN
			Rev. date	

SUBVAKT



NO  
mark down

NC  
mark up



Connection: +B  
Junction box is delivered as a seperatye part together with two termination clamps.  
Adapt and cut the cable to your desired length.

**FEATURES**  
Float liquid level sensor with submersible cable. REED-technology without own power consumption.

**MATERIALS**  
Probe: Ø8x120mm, SUS-316  
Float Ø28mm: SUS-316, density 0,75  
Junction box: Polyamid 6, IP67  
Temp. -20...+85°C

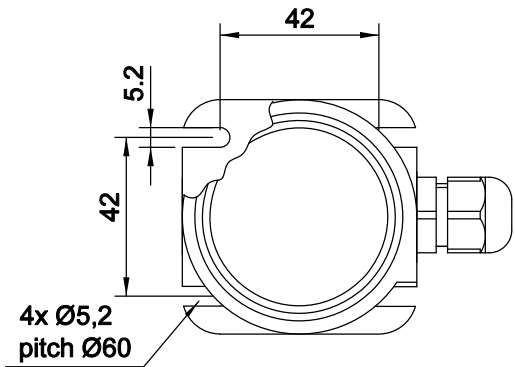
Cable: 3m PUR, 2x 0,50mm²  
Other cable length on request (KABL500)

**CONTACT FUNCTION**  
NO= Open kontakt at low level, close rising  
Turn the float to invert the signal to NC

**PROTECTION DEGREE**  
IP67

<b>ELECTRICAL DATA</b>	
Contact rating *	70 VA
max voltage	3-48V
max current	1,5 A

\* = resistive load



■ = Switch closed

□ = Switch open