



# HMCK Series

*The ultimate solution for demanding level control. Multi-function level switches in custom lengths, delivering outstanding flexibility.*

- Extra robust terminal box in metal
- Adjustable G1" compression fitting and flange
- Selectable switch point lengths and contact functions\*



HM 2511

Sensors with REED technology without power consumption, manufactured with the highest quality in our ISO-certified factory in Roslagen, Sweden.

## General description:

HMCK. The float level switches are available with up to four functions in the same unit. It can also be combined with a built-in temperature sensor or overtemperature protection. Suitable for oil and other non aggressive liquids.

## Construction:

Extra robust terminal box in powder-coated aluminum. Protection class IP66. Terminals connection for mounting your own cable.

Adjustable G1" compression fitting, when the nut is tightened, the coupling is fixed to the probe. Probe in brass, floats in NBR.

\* We manufacture the sensor in desired lengths. Specify switch points length (mm) and contact function when ordering.

**O** : NO, open at low level, closes rising

**S** : NC, closed at low level, opens rising

**V** : NO/NC, change-over

**T** : Overtemperature protection. NC, opens rising at 70°C ±5

**TA90**: Thermostat NO/NC adjustable 30...90°C

## Options, special on request:

Overtemperature protection with other switching temperature and smaller hysteresis.

Built-in temperature sensor Pt100, Pt1000, 4-20mA and 0-10V.



Note! Read this instruction before installation and use

Protective earth

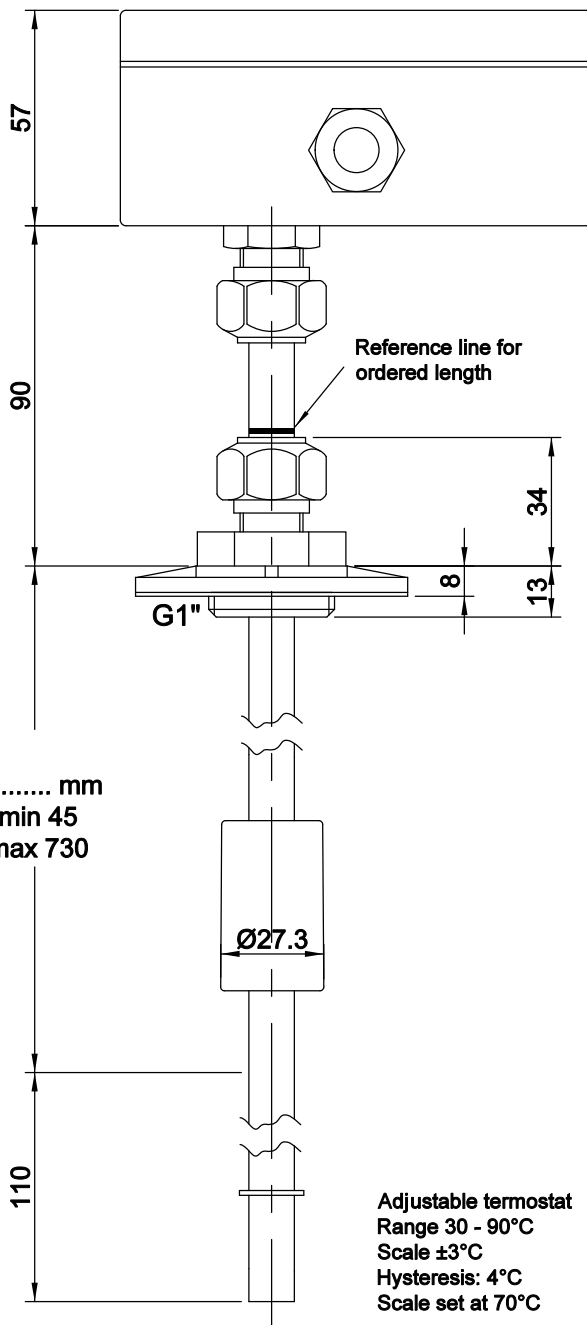
2 1 3

8 7 9

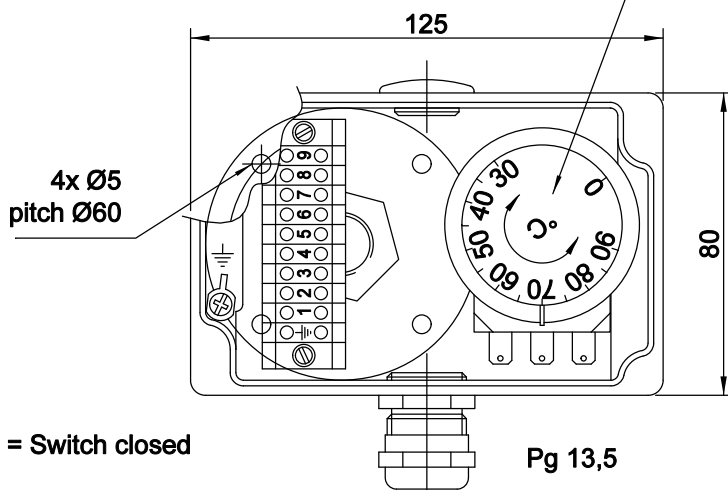
Open when temp. is below set temp.

Open when temp. is higher than set temp.

V..... mm  
min 45  
max 730



Adjustable thermostat  
Range 30 - 90°C  
Scale  $\pm 3^\circ\text{C}$   
Hysteresis:  $4^\circ\text{C}$   
Scale set at  $70^\circ\text{C}$



■ = Switch closed

□ = Switch open

Pg 13,5

This manual is available in pdf format, please contact Hemomatik AB

#### FEATURES

Float liquid level sensor with REED-technology to activate pumps or valves via relays or PLC. Suitable for oil and other non aggressive liquids

#### MATERIALS

Probe : Brass  
Float : NBR S.G. 0,42  
Fitting : Brass  
Flange : PA6  
Gasket : Nitrile  
Terminalbox: powder-coated aluminum

Temp. media :  $-20...+100^\circ\text{C}$   
Temp. ambient :  $-20...+70^\circ\text{C}$   
For use 0-5000m above MSL

#### CONTACT SYMBOLS

V = change over

#### PROTECTION DEGREE

Terminal box : IP67  
Probe : IP68

#### INSTALLATION

Adjustable compression fitting, when the nut is tightened, the coupling is fixed to the probe.

#### ELECTRICAL MAX DATA

Contact rating *	60 VA
Voltage	3-230 V AC/DC DC to 60Hz
Current	1 A

\* = resistive load

**WARNING!** If no protective earth is connected to the sensor, the supply voltage must not exceed 48V AC/DC