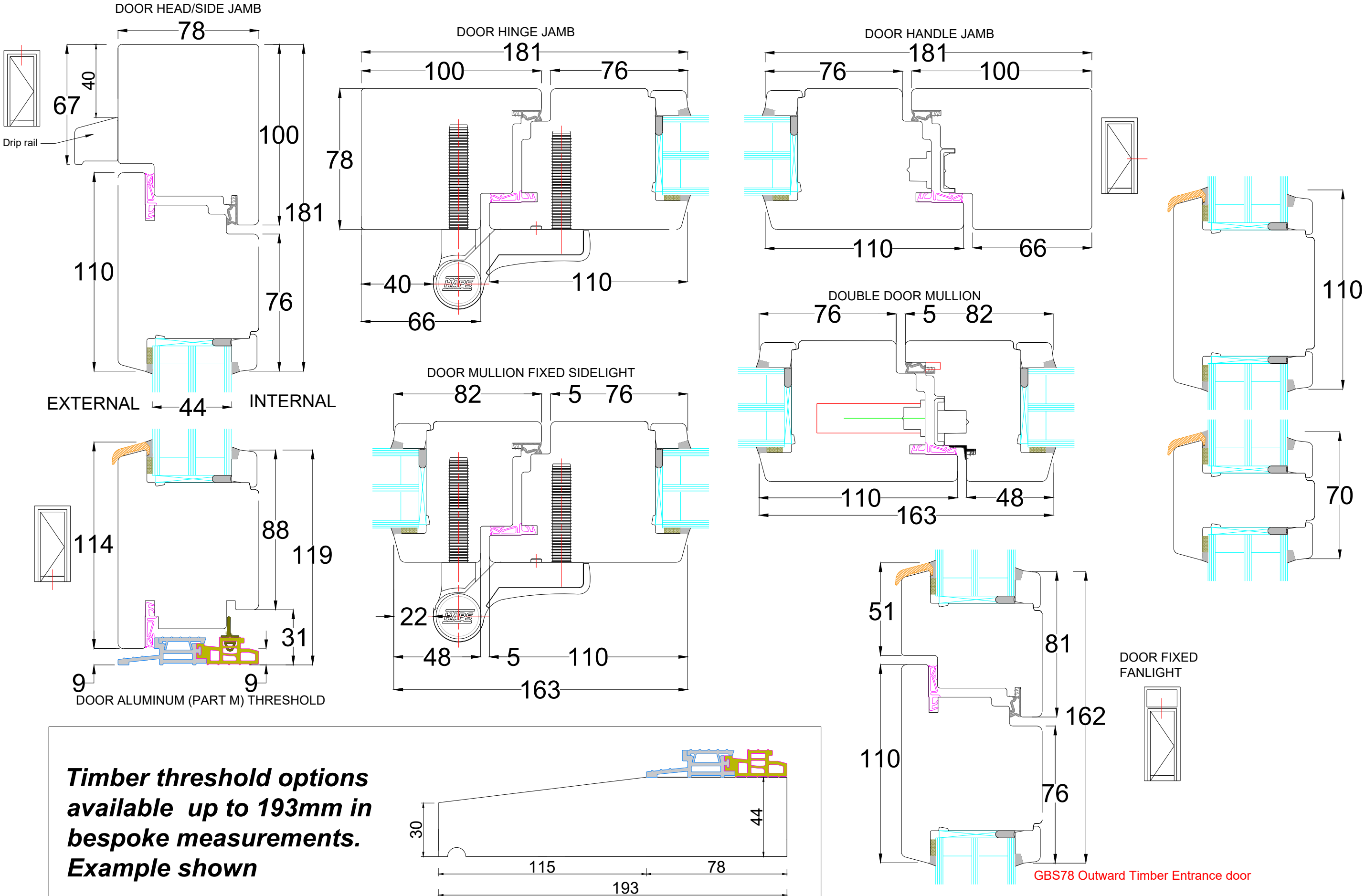


GBS78 Outward Timber Entrance door

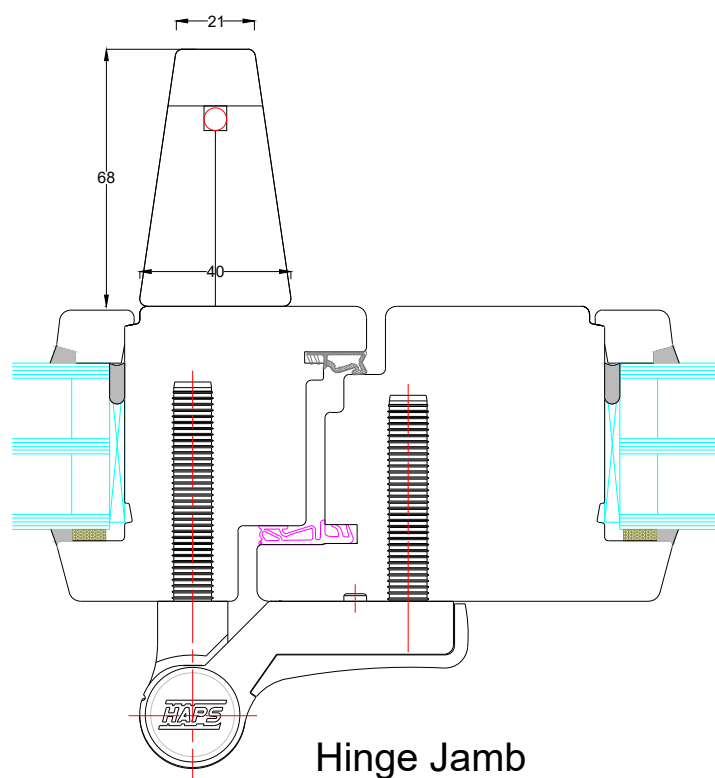


Timber threshold options available up to 193mm in bespoke measurements. Example shown

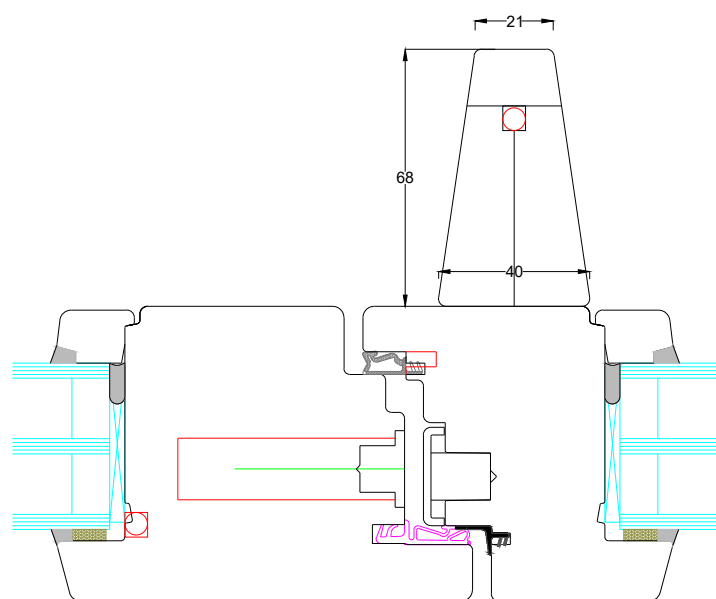


Warning: Drawing may not be printed to scale
Retention of Copyright: Environmental Construction Products Ltd retain the copyright of this document. Environmental Construction Products Ltd license the Purchaser to use and copy this document only for the Purchaser's own purposes subject to our Standard Conditions of Sale and to payment of all invoices according to agreed terms
Last updated by: Luke Symms Date: 7/25/2025

GBS78 outward opening



Hinge Jamb



Handle Jamb

Timber support posts for doors over 2200mm High

On door sets with sidelights or fanlights it is sometimes required to have support timbers to help stabilise the frame. On such heavy doors when they close against a sidelight there can sometimes be a bounce to the frame. This can cause issues for locking and airtightness, but can also lead to cracking plasterwork or render. On a door without sidelights the lock side jamb is usually fixed into the wall, so is very stable. On doors with sidelights, as the lock is on the shared mullion, it is not as stable. Adding a support timber gives the mullion more structural stability and allows the doors to latch and lock as normal without bounce. Please see the notes section below the door and sidelight item on your quote to see if we have recommended support to be added.

Alternatively, a different form of support could be added on site, for example a steel section.

With all of our products at 21 Degrees we strive to find the balance between best thermal performance, long term functionality, structural stability and aesthetics. All of our products are bespoke so if an alternative design would work better for you, please speak to a member of our team who will be happy to talk through this with you.

GBS78 Outward Timber Entrance door



Warning: Drawing may not be printed to scale

Retention of Copyright: Environmental Construction Products Ltd retain the copyright of this document. Environmental Construction Products Ltd license the Purchaser to use and copy this document only for the Purchaser's own purposes subject to our Standard Conditions of Sale and to payment of all invoices according to agreed terms

Last updated by: Luke Symms Date: 7/25/2025