



**COLNAGO**

COLNAGO

**TT2**

assembly  
support manual

EN

# Table of contents



General Information	05
TT2 Frame-kit: List of parts	07
List of Recommended Tools and Supplies	08
Seatpost installation	10
Seatpost installation – seatpost cut	12
Saddle clamp installation	14
Front axle installation	16
UDH – Rear derailleur hanger installation	17
Chain guide installation	18
Fork and headset installation	19
Di2 Battery support assembly	26
Colnago Aero bottlecage assembly	28
Brake hose routing	30
Electric - Di2 wire routing	32
Tire clearance	33
Intended Use for Colnago TT2	34
Weight Limit	35
Torque and fasteners recommendation	36
Torque setting table	37
Colnago TT2 - Technical Information	38
Colnago TT2 - Geometry Chart	39



# General Information

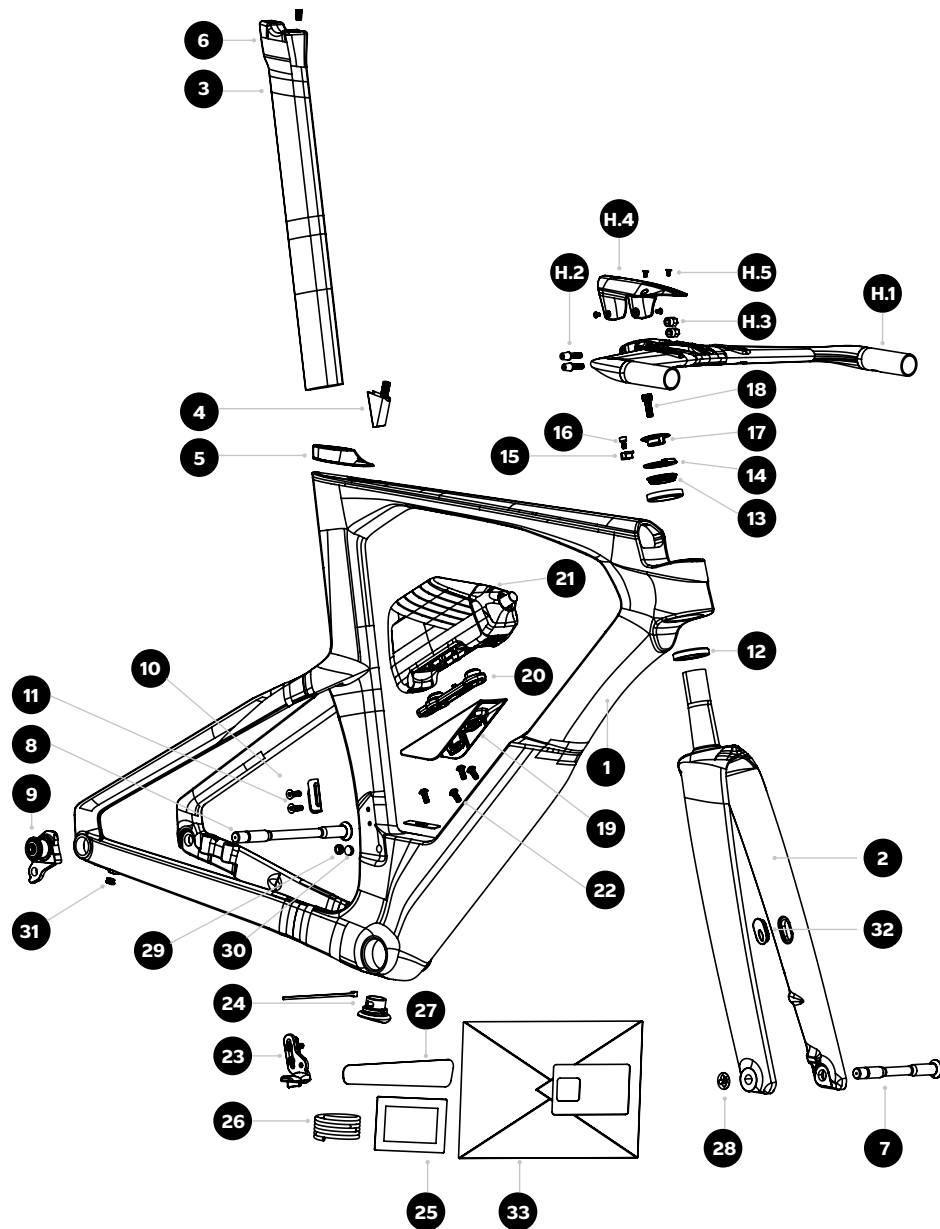
This manual is a guideline for the official Colnago retailers in the assembly and adjustment of the Colnago TT2 bicycle. It assumes that the assembler is a well-trained professional bicycle mechanic, and, furthermore, it is not intended to replace any assembly and service instruction provided by third-party component manufacturers. All the pictures in the manual are presented to clarify the assembly procedure; real components might slightly differ from the ones in the pictures. This manual shows only the procedure associated with the installation of Colnago parts, as well as the routing of shifting and braking cables. All the Colnago proprietary parts listed below are available only through Colnago and/or its authorized distributors. Failure to use the specified parts and to follow these assembly instructions may lead to serious injury or death.

# TT2 frame-kit List of Parts

The numbers shown in the diagram do NOT correspond to the Colnago spare part purchase codes

ITEM NO.	DESCRIPTIONION	QTY
1*	TT2 - Painted Frame	1
2*	TT2 - Painted Fork	1
3	TT2 Seatpost - 0 mm offset	1
4	TT2 seatpost clamp + screw	1
5	TT2 seatpost rubber grommet	1
6	Colnago Saddle clamp with screws	1
7	Threaded Thru-Axle UDH Front 12 mm	1
8	Threaded Thru-Axle UDH Rear 12 mm	1
9	UDH Hanger	1
10	Front Derailleur hanger	1
11	M5x15 Flat head screw - Colnago logo	2
12	Bearing 30x39x6,5 SLT	2
13	Compression Ring TT2	1
14	Steering block TT2 alloy	1
15	Insert Steering block TT2	1
16	M4X6 socket head screw	6
17	Top cap TT2 open	1
18	M6X18 socket head screw	1
19	Colnago TT2 bottlecage fidlock adapter	1
20	Fidlock Twist Lock	1
21	Colnago Aero bottle + Fidlock clamp	1
22	M5x12 bottom head screw	1
23	Colnago Chainguide TT2	2
24	Di2 Battery holder TT2	1
25	Colnago Grease sample	1
26	Foam Hose Cover	1
27	Chain guard sticker transparent	1
28	Colnago front axle Sticker	2
29	Non-drilled rubber cap Di2	1
30	Drilled rubber cap Di2	1
31	CS rubber grommet Di2	1
32	Fork Rubber plug brake hose	1
33	Colnago NFC card Kit	1
H.1	TT2 Integrated cockpit (360 mm c-c)	1
H.2	Custom Screws M5 TT2	2
H.3	Custom Nut M5 TT2	2
H.4	TT2 cockpit plastic cover	1
H.5	M3x6 flat head screws	4

\* Size/color dependent

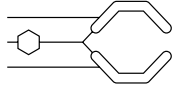
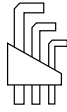
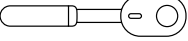
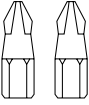
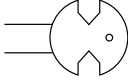
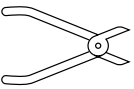



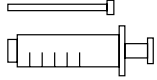
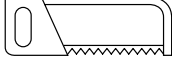
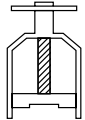

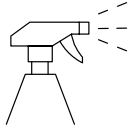


# List of Recommended Tools and Supplies

The following tools and parts listed are required for mounting and adjusting procedures of Colnago parts. Colnago recommends any intervention on the bike to be performed by an authorized Colnago retailer.

Refer to each specific mounting procedure and requirements for the assembly of a specific component, provided its own manufacturer.

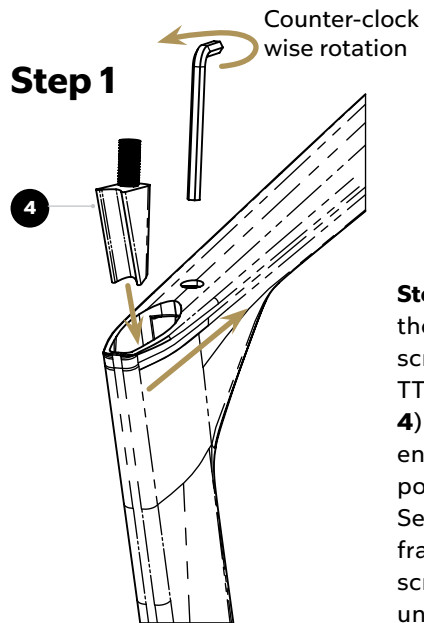
**NOTE:** If you are a Colnago TT2 consumer/purchaser reading this manual, we suggest you consult your authorized Colnago retailer before undertaking any procedure in this manual.

<p>Bike SupportStand</p> 	<p>Allen key key 2 ÷ 12 mm</p> 	<p>Torque wrenches with 2.5 Nm to 25 Nm</p> 
<p>Phillips and slot head screw-driver</p> 	<p>Pedal wrench</p> 	<p>Cable cutters</p> 
<p>Pliers</p> 	<p>Brake rotor locking tools (inner and outer)</p> 	<p>Di2 wire tool -Shimano</p> 
<p>Hydraulic bleed kit</p> 	<p>Hacksaw (with carbon blades)</p> 	<p>Saw cutting guide</p> 
<p>High quality grease &amp; carbon assembly compound for bikes</p> 	<p>Isopropyl alcohol</p> 	

# Seatpost installation

3	TT2 Seatpost - 0 mm offset
4	TT2 seatpost clamp + screw
5	TT2 seatpost rubber grommet

**TORQUE 6 Nm**



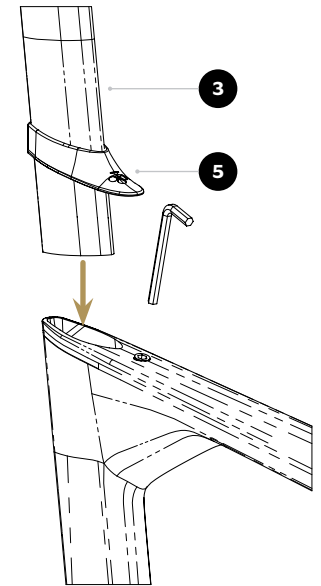
**Step 1:** After assembling the pushing block with its screw, insert the complete TT2 seatpost clamp (N. 4) into the seat tube, ensuring it is correctly positioned in its housing. Secure the clamp to the frame by turning the clamp screw counterclockwise until it reaches the end of its thread.

**NOTE:**

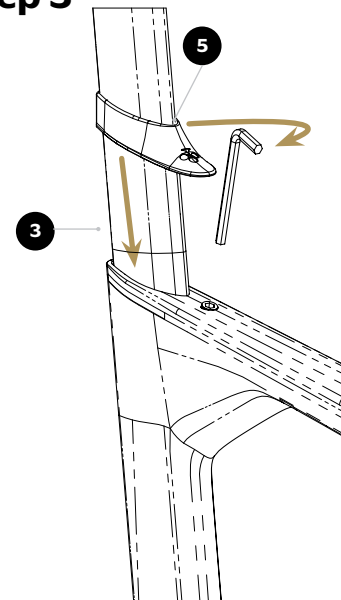
Apply carbon compound both to the inner face of the seat tube and to the carbon seatpost. After installation, hold the frame and bicycle through a secured seatpost only. Clamping the top tube may cause damage and void the frame warranty.

**Step 2:** Fit the correct TT2 rubber grommet (N. 5) onto the seatpost (v), then insert the seatpost into the seat tube.

**Step 2**



**Step 3**



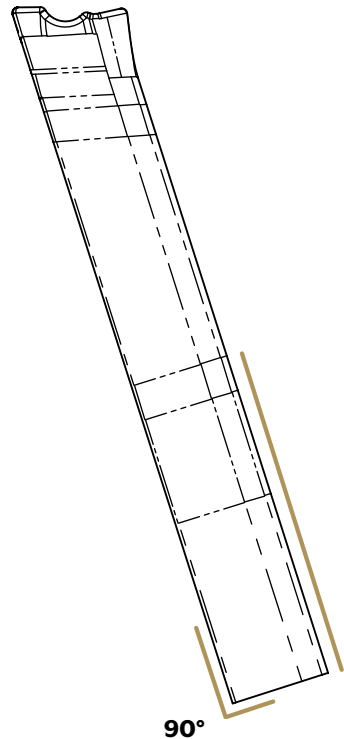
**Step 3:** Adjust the saddle to the desired height and tighten the clamp screw to **6 Nm** to prevent slipping. Finally, position the rubber grommet so that it covers and protects the screw.

# Seatpost installation

## Seatpost cut

It is possible to cut the seatpost if it is too long. In this case:

- Use the proper tool to prevent carbon fiber delamination.
- Cut the seatpost at a 90° angle.
- Always maintain a minimum insertion depth of 90 mm

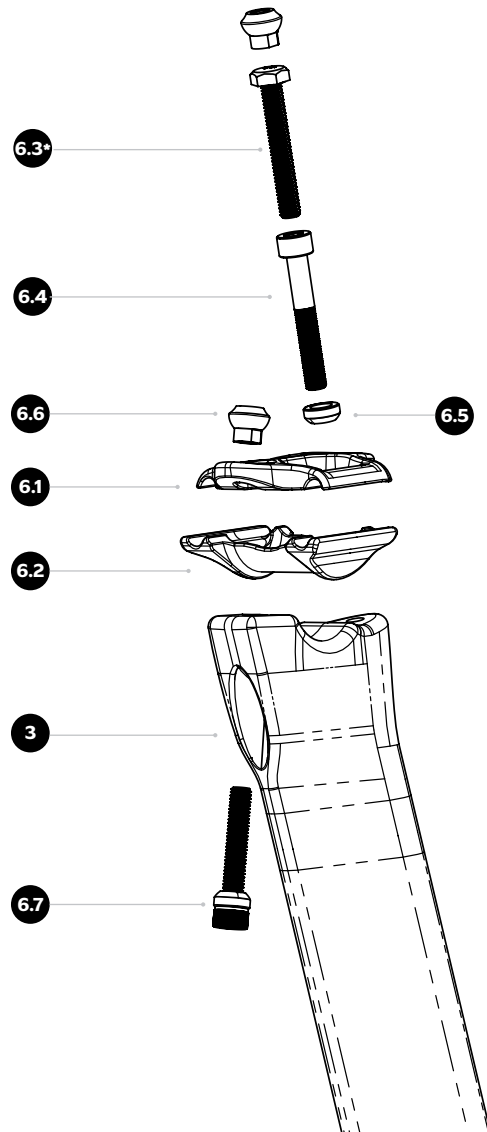


Min frame insertion into the frame 90 mm

Colnago TT2 features a seatpost stopper to prevent damage caused by excessive seatpost insertion. The stopper depth varies depending on the frame size. If the seatpost cannot be inserted any further, do not apply additional force. Instead, the seatpost must be cut to the appropriate length.



# Saddle clamp installation



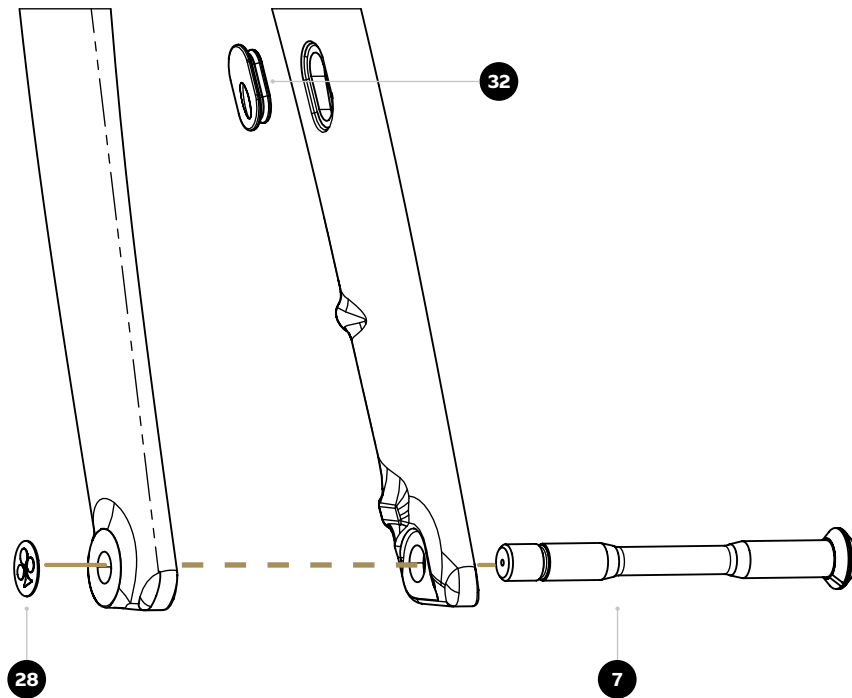
<b>3</b>	TT2 Seatpost
<b>6.1</b>	Saddle Clamp - Top
<b>6.2</b>	Saddle Clamp - Bottom
<b>6.3*</b>	M6x40 Hex Head Screw
<b>6.4</b>	M6x40 Socket Head Screw
<b>6.5</b>	Spherical Washer M6 - 2 pcs
<b>6.6</b>	M6 Custom Nut
<b>6.7</b>	M6X35 Socket Head Screw

**TORQUE 8 Nm**

The saddle clamp kit is provided both with socket (**N. 4.4**) and hex (**N. 4.3**) head M6x40 front screws. The second one is recommended to ease the assembly with closed saddles.

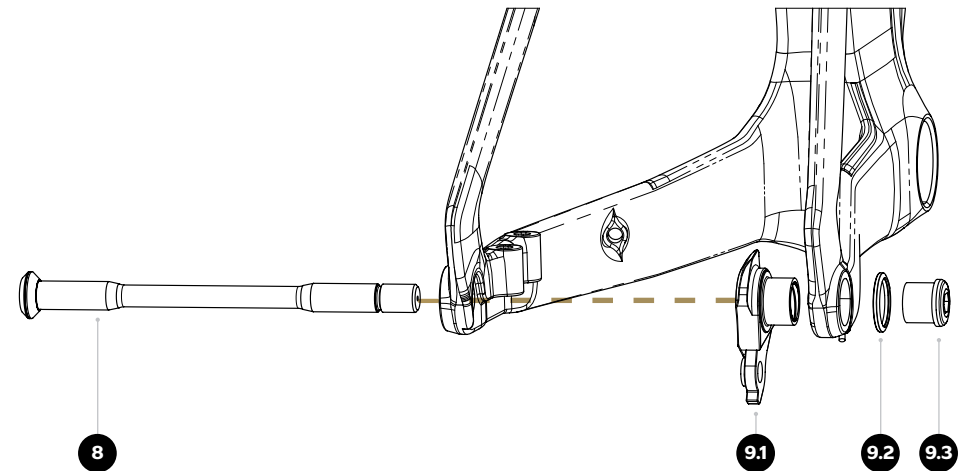
# Front axle installation

<b>7</b>	Front 100 mm thru-axle 6 mm hex head	<b>TORQUE 10 Nm</b>
<b>28</b>	Colnago Logo round adhesive sticker	
<b>32</b>	Fork Rubber plug brake hose	

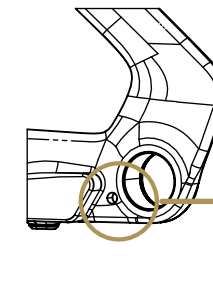
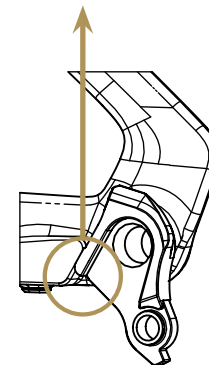


# UDH - rear derailleur hanger installation

<b>8</b>	Thru-axle UDH - 6 mm hex head	<b>TORQUE 10 Nm</b>
<b>9.1</b>	UDH Hanger	
<b>9.2</b>	UDH Hanger - Washer	
<b>9.3</b>	UDH Hanger - Cap	<b>TORQUE 25 Nm</b>



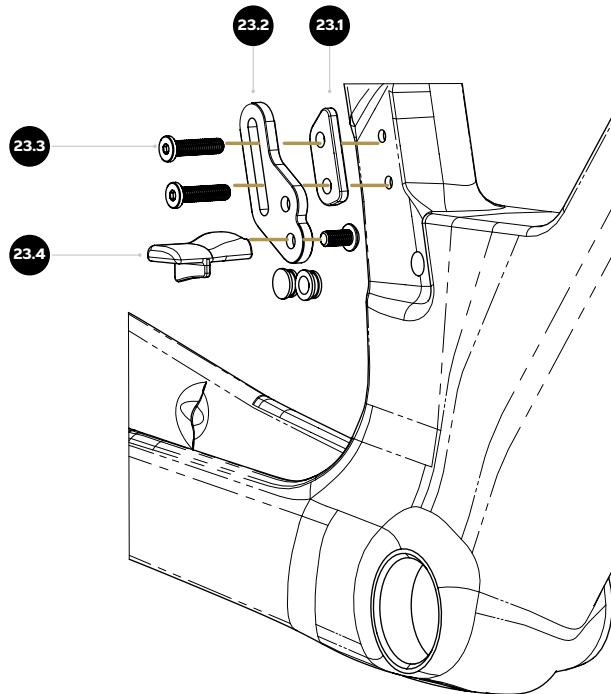
Contact between frame and UDH hanger in the highlighted area



Contact between frame and UDH hanger in the highlighted area

# Chain guide installation

23.1	Colnago Chainguide TT2 - base	
23.2	Colnago Chainguide TT2 - adjustment plate	
23.3	M5x20 low head screw Colnago logo	<b>TORQUE 3 Nm</b>
23.4	Colnago Chainguide TT2 - chainguide	
23.5	M5x10 button screw	<b>TORQUE 2 Nm</b>
29	Non-drilled rubber cap Di2	
30	Drilled rubber cap Di2	

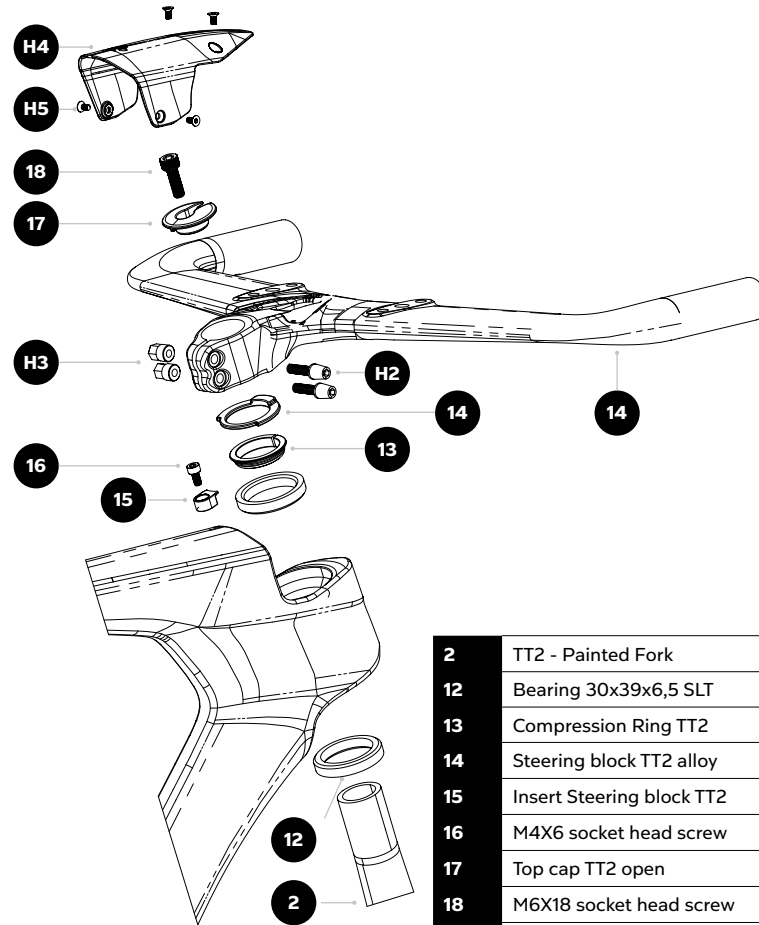


Fix the chain guide (N. 23.4) to the adjustment plate (N. 23.2) in one of the two dedicated positions, depending on the chainring size, using the M5x10 button-head screw (N. 23.5). The chain guide angle can be adjusted to align it with the chain path. Once the desired height has been set using the slot adjustment, attach the assembly to the frame together with the base (N. 23.1) using the M5x20 screws (N. 23.3). Maximum tightening torque: 3 Nm.

**NOTE:**

it is possible to fix the chain guide (N. 23.4) on the Adjustment plate (N. 23.2), in 2 possible positions, depending on the chainring size

# Fork and headset installation

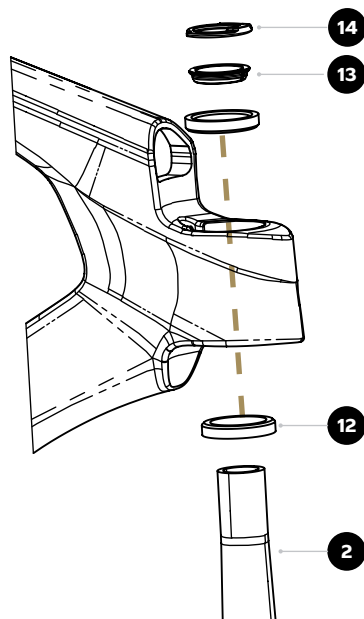


2	TT2 - Painted Fork	
12	Bearing 30x39x6,5 SLT	
13	Compression Ring TT2	
14	Steering block TT2 alloy	
15	Insert Steering block TT2	
16	M4X6 socket head screw	<b>TORQUE 2 Nm</b>
17	Top cap TT2 open	
18	M6X18 socket head screw	
H.1	TT2 Integrated cockpit (360 mm c-c)	
H.2	Custom Screws M5 TT2	<b>TORQUE 5 Nm</b>
H.3	Custom Nut M5 TT2	
H.4	TT2 cockpit plastic cover	
H.5	M3x6 flat head screws	

## Fork, headset and handlebar installation

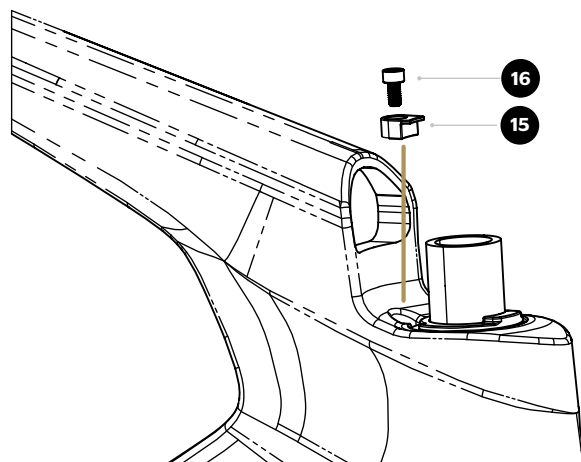
### Step 1

**Step 1:** Apply the specified grease to the bearing seats and install the two bearings (N. 12), the compression ring (N. 13), and the steering block (N. 14) onto the fork steerer tube (N. 2). Ensure that the notch on the steering block faces upward and forward, in the direction of travel.



### Step 2

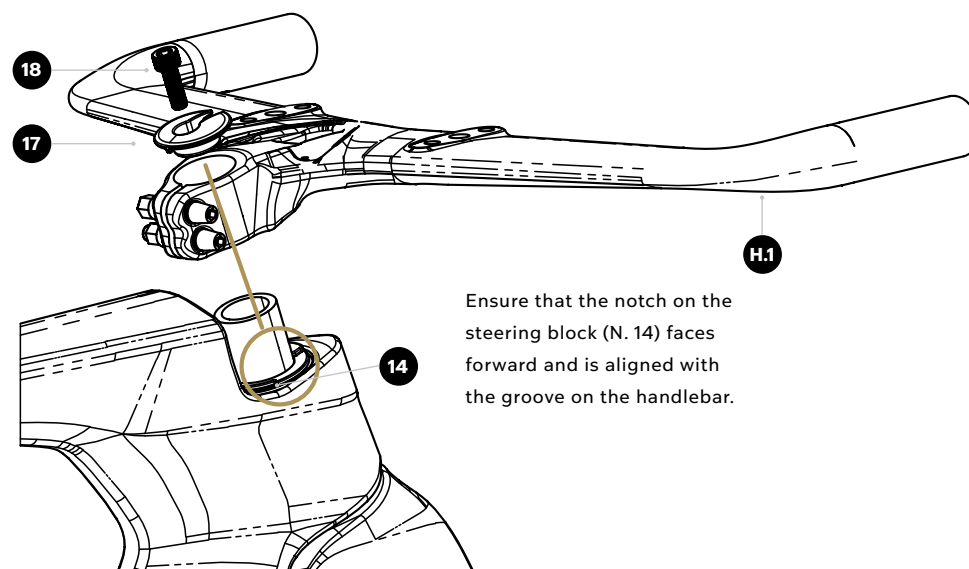
**Step 2:** Insert the steering block insert (N. 15) into its seat behind the upper bearing and secure it using the M4×6 screw (N. 16).  
**Tightening torque: 2 Nm.**



## Fork, headset and handlebar installation

### Step 3

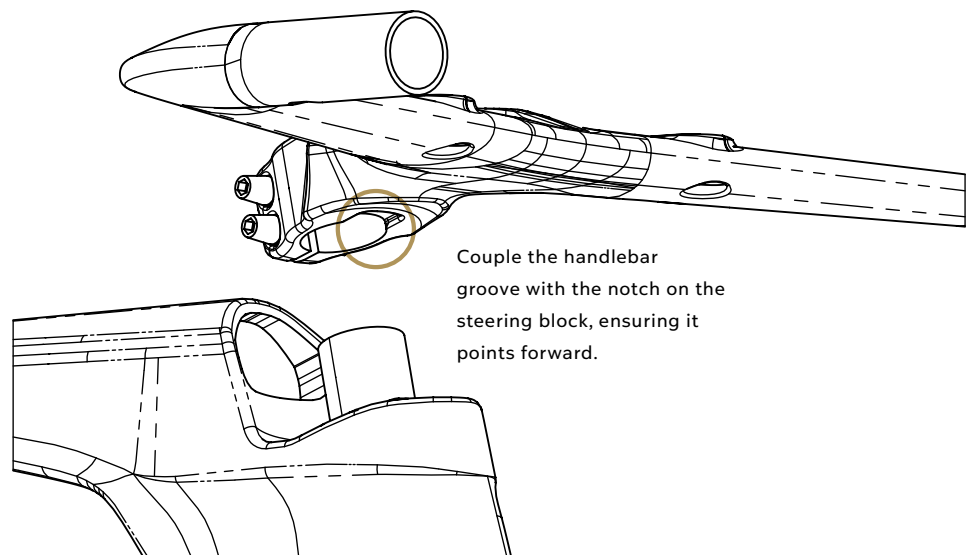
**Step 3:** Verify that the steering block (N. 14) is correctly positioned, with the notch facing upward and forward in the direction of travel. Then insert the handlebar (N. H.1) and the TT2 top cap (N. 17) into the steerer tube. Apply the required bearing preload by tightening the M6×18 screw (N. 18).



Ensure that the notch on the steering block (N. 14) faces forward and is aligned with the groove on the handlebar.

## Fork, headset and handlebar installation

### Step 3

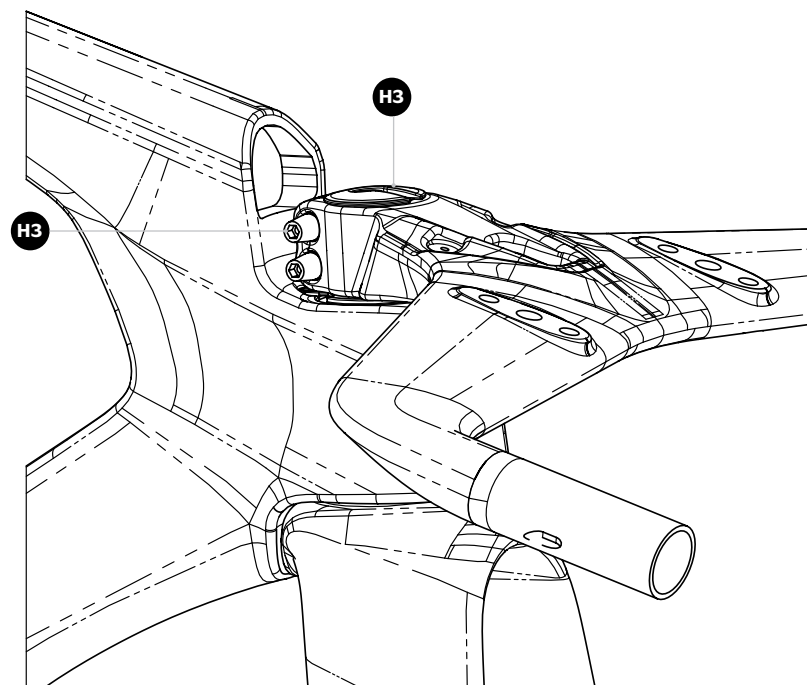


**IMPORTANT:** Before assembling the components, thoroughly clean the steerer tube and the stem clamping area using a suitable degreaser. Grease, dirt, or other contaminants can reduce friction between the stem and the steerer tube, potentially causing unwanted handlebar slippage.

## Fork, headset and handlebar installation

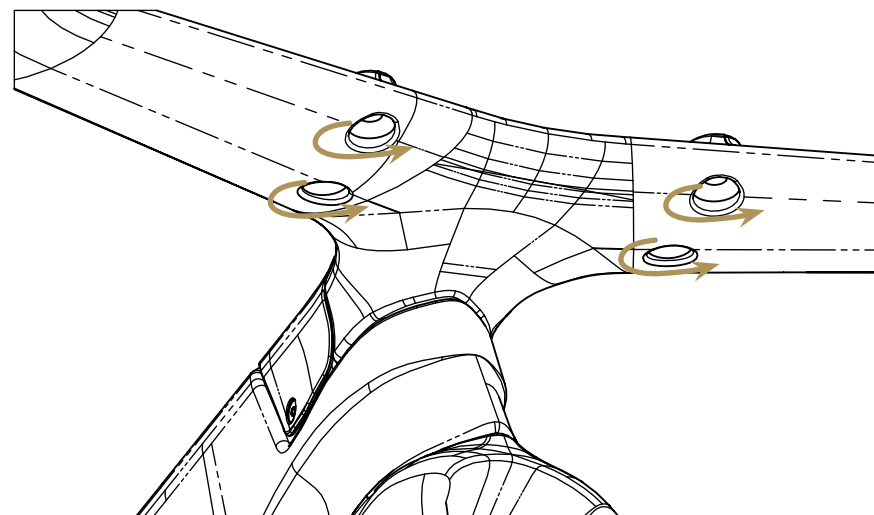
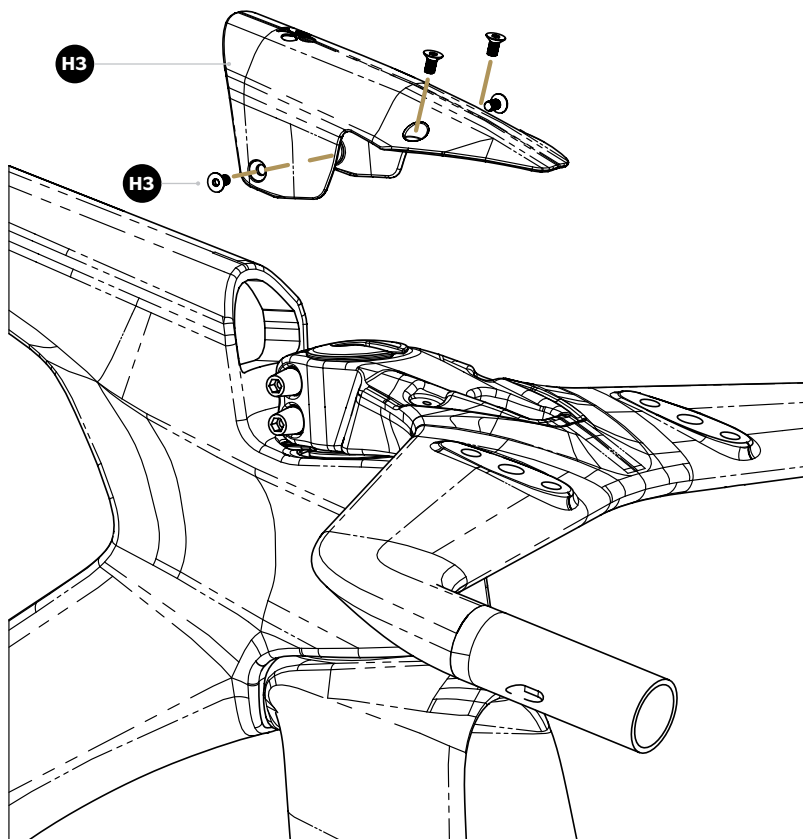
### Step 4

**Step 4:** Align the handlebar with the front wheel and secure it to the steerer tube by tightening the custom screws and nuts (**N. H2** and **N. H3**). Tightening torque: 5 Nm



### Step 5

**Step 5:** After completing the routing of the brake hoses and Di2 wires (see the dedicated section of this manual), install the plastic cover (**N. H4**) and secure it using the four M3×6 screws (**N. H5**).

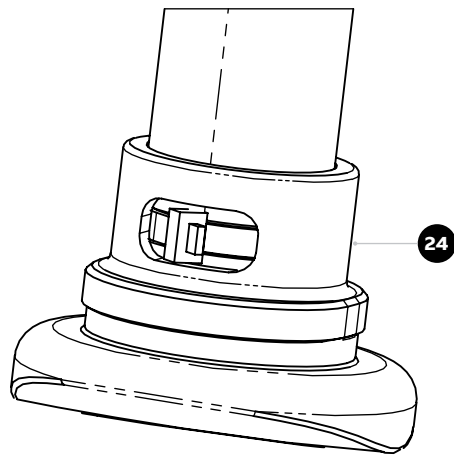


**NOTE:** The Colnago TT2 is designed to be ridden with both with the Colnago Aerodynamic Extensions (ART.000051723) and other compatible extensions. To secure the extensions to the cockpit, use the supplied M6 flat-head screws. The required screw length depends on the number of spacers installed. **Maximum tightening torque:** 6 Nm. For the installation of the extensions, refer to the assembly manual for the Colnago Aerodynamic Extensions (ART.000051723) or to the assembly instructions provided by the extension manufacturer.

# Di2 Battery support assembly

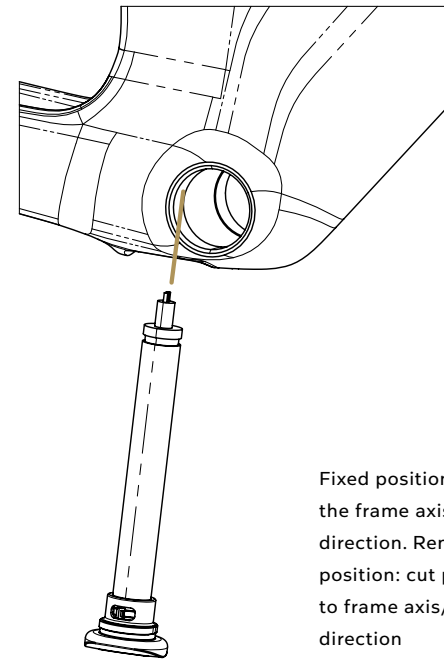
## Step 1

**Step 1:** Secure the Di2 battery to the battery support (N. 24) using the supplied zip tie, as shown in the illustration.

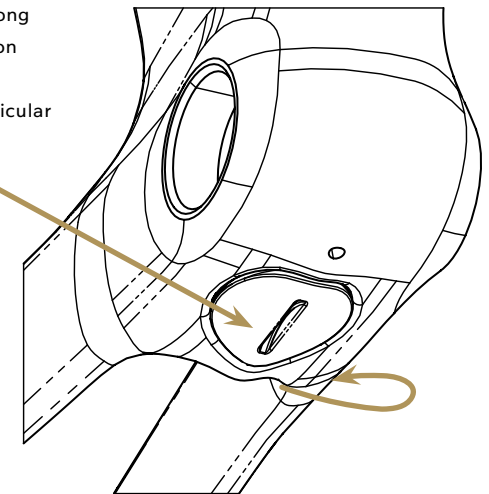


## Step 2

**Step 2:** After completing the routing of the Di2 wires inside the frame, connect them to the battery. Then insert the battery and support assembly into the frame through the opening beneath the bottom bracket. The battery support can be inserted and removed when its slot is perpendicular to the frame axis. Once the assembly is in position, rotate the support so that the slot is aligned with the frame axis to lock the battery securely in place.



Fixed position: cut along the frame axis / motion direction. Removable position: cut perpendicular to frame axis/ motion direction



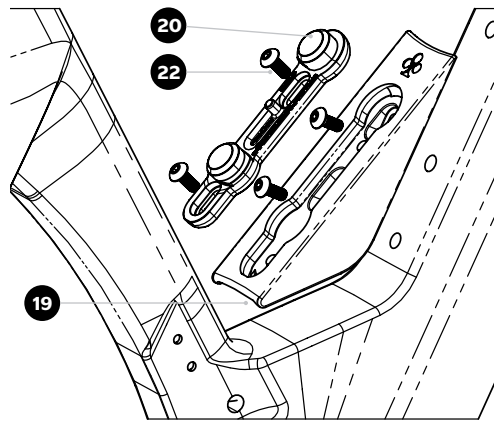
# Integrated bottlecage support assembly

## Integrated bottlecage support assembly

The Colnago TT2 features an integrated bottle cage and bottle system designed to maximize aerodynamic performance. The system is based on the Fidlock® magnetic mounting technology.

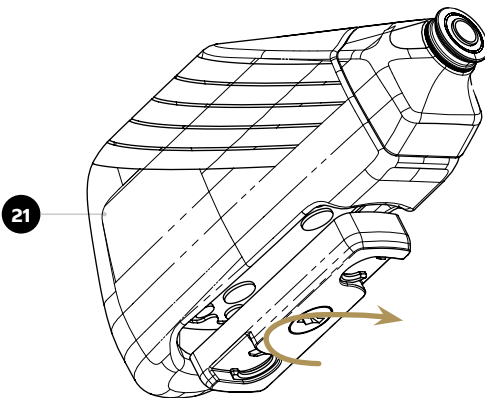
### Use

**Use:** To attach the bottle to the frame, simply bring it close to the mounted base until the magnets engage and lock it into position. To remove the bottle, rotate it and pull it away from the base.



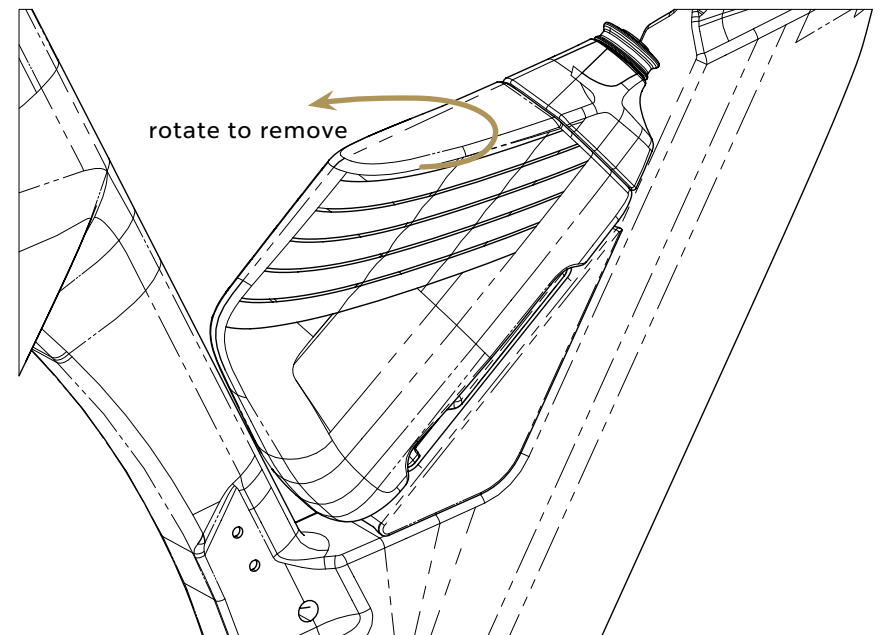
### Step 1

**Step 1:** Install the Colnago TT2 aero bottle cage adapters (N. 19) onto the frame using the M5x12 button-head screws (N. 22). Then secure the Fidlock® Twist base to each adapter using the same screws (N. 22).



### Step 2

**Step 2:** The Colnago Aero Bottle (N. 21) is equipped with a custom Fidlock® connector. The connector can be removed or replaced by loosening and rotating the central screw located on the bottom of the bottle.



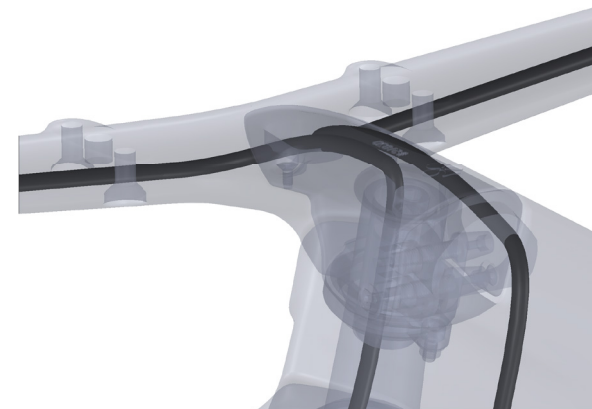
# Brake hose routing

It is recommended that the rear hydraulic brake hose is installed before electric wires. These routing illustrations are intended as a supplement to the installation instructions only. For each specific brake system, please refer to the component manufacturer's service center or website for further information.



## Brake hose routing

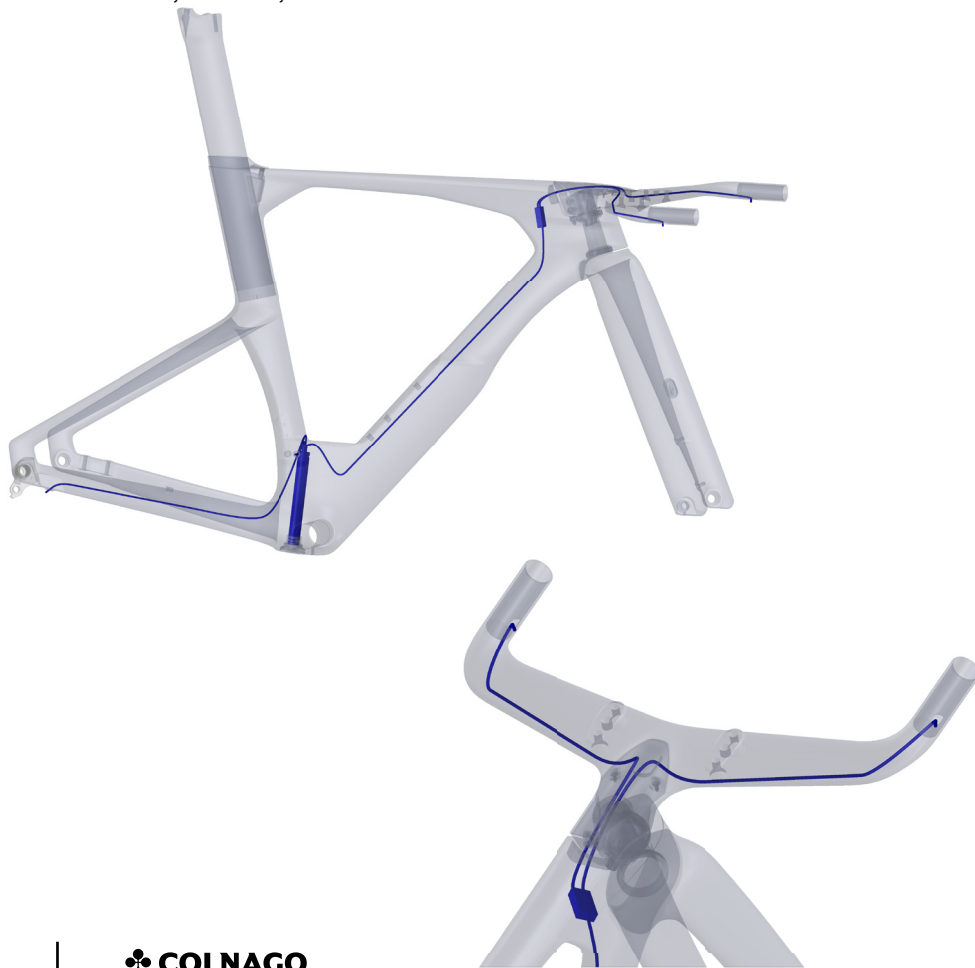
To ease the procedure it is recommended to route the brake hoses before installing the headset and the Di2 battery. Once installed and routed the rear brake hose in the downtube, with a dedicated wiring tool with magnet in the end, pull the it through the preload bolt hole as shown in the pictures below.



To avoid undesirable noises always install the rear brake hose foam, cut according to the frame size in order not to interfere with other subassemblies

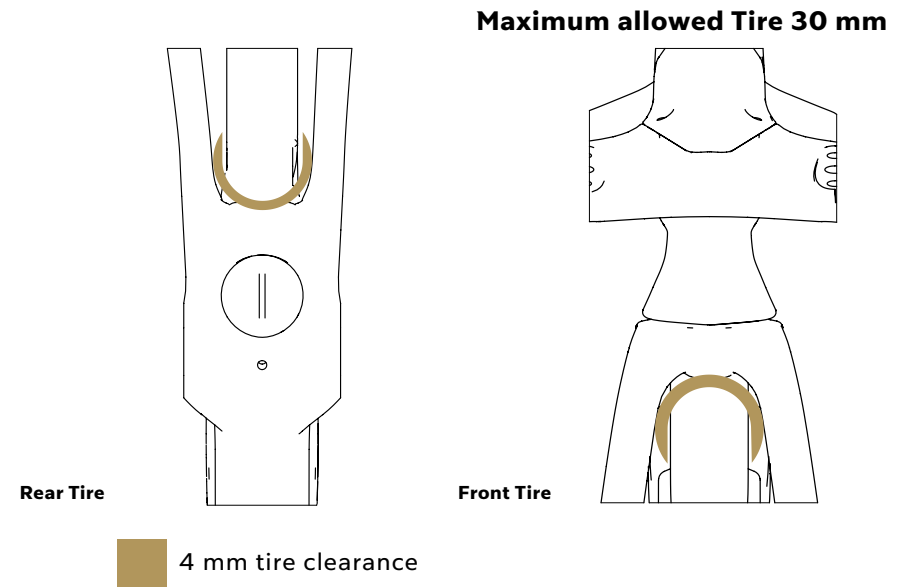
# Electric Di2 wire routing

Colnago recommends installing electric cables and junction points after brake hose. The presented routing schematics are intended as a supplement to the groupset manufacturers' installation. For any more detailed information, please refer to the manufacturers' technical manual, website, or service center.



# Tire clearance

Colnago frames and forks are designed to comply with ISO 4210-2 standard for tire clearance. For the road racing category, a minimum of 4 mm of clearance must remain between the tire and the frame or fork. The effective width and diameter of the tire can vary depending on the tire brand, the rim geometry and dimension and the tire inflation pressure. Colnago always recommends to check and respect the minimum clearance before choosing both front and rear tire.



**NOTE:** Contact between the tire and the frame or fork may lead to a component or subassembly failure while riding, with potentially serious injury for the rider. Damage to the bicycle due to non-compliant tire clearance is not covered by the bicycle warranty.

# Intended Use for Colnago TT2

## Road Racing Bicycle – Time Trial and Triathlon application

**Intended surface:** Colnago TT2 is designed for riding on a paved surface with both the tires always in contact with the ground.

**Not Intended surfaces and uses:** Colnago TT2 is not conceived for off-road, cyclocross, touring with additional extra bags of racks, or mounting child seats or trailers.

Colnago TT2 is designed both light weight and aerodynamic performance. You must understand that these types of bikes are intended to give an expert racer or competitive cyclist the maximum performance over a relatively short product life. Furthermore, the position of the bicycle is rather extreme and racing oriented; this implies that, to ride the bicycle safely and enjoy the experience in all the conditions, especially on open roads, it requires advanced riding skills. Light frames and components need frequent inspection. These frames are likely to be damaged or broken in a crash.

### WARNING:

Any abuse in the usage is hazardous and may lead to serious consequences.

# Weight Limit

Colnago bicycles are tested to a maximum admissible mass\* of 110kg.

## COLNAGO TT2

### Max Admissible Mass

# 110kg - 242.5lbs

### NOTE:

Each component has different weight limits, and if replaced can alter the maximum safe bike weight limit, since the most restrictive one is defining the limit of the whole vehicle. Consult your Colnago retailer about what components are suitable for your Colnago TT2.

\*Maximum admissible mass is the sum of the bicycle with all its components (groupset, cockpit, wheels, etc.), plus the rider and any luggage or accessory (head unit, filled bottles, storage mounts, etc.)

# Torque and fasteners recommendation

To maintain correct tightening torques of all the threaded fasteners is crucial to your safety. Always tighten fasteners to the correct torque. Too high torques can stretch and deform fasteners. Too low torques can cause unwanted fastener movements leading to unfastening and fatigue failures.

Use only a correctly calibrated torque wrench with a proper scale to tighten critical fasteners on your bike. Carefully check to have the proper tools and follow their manufacturer's instructions on how to set and use the tool for accurate results before attempting any adjustments yourself. Before assembling and tightening any bolts, all threads must be greased with a quality, non-lithium type grease unless the bolt is pre-coated with thread locker. All bolts should have either grease or thread locker - but never both.

Colnago recommends the use of carbon assembly compound/friction paste for all areas of clamping to carbon fiber (seatpost to frame, stem to fork, and handlebar to stem joints). Such a paste reduces corrosion potential, and a decrease in required clamping force needed to support a given load. The paste should be evenly spread on the carbon surface under the clamped area.

#### WARNING:

In case of any doubt or disagreement or a conflict between the following list and any supplier literature on recommended torque values for original equipment components, please contact a Colnago retailer for review and clarification of the required torque before to keep on with the installation.

# Torque setting tab\*

Colnago is concerned about the resistance and quality of their frames. In order to guarantee the perfect conservation and durability of the frame over time, is important to maintain it correctly, by using a torque wrench.

#### REASONS WHY TO USE THE TORQUE WRENCH

1. Ensuring the frame and components are not over tightened which can cause damage or from components loosening from being under tightened. Cracks and damages caused by overtightening the bolts are not covered by Colnago Warranty.
2. Avoiding any harm to the cyclist whilst riding, due to the failure of incorrect installation.
3. Frameset and components benefit from a longer lifespan, even after multiple maintenance and service schedules during its lifetime.

DESCRIPTION	MAX TORQUE (approx.)	TOOL
Rear clamp screws TT2 cockpit	5 Nm	4 mm Allen key
TT2 cockpit plastic cover	2 Nm	2 mm Allen key
Colnago Bottom Bracket cups	30-35 Nm	BSA key
Colnago TT2 Seatpost clamp bolt	6 Nm	4 mm Allen Key
Colnago Saddle clamp bolt	8 Nm	5 mm Allen Key
Bottle cage bolts - Fidlock® connector	2.5 Nm	3 mm Allen Key
Wheel thru-axle	10 Nm	5 mm Allen Key (6 mm for UDH std)
Brake Caliper bolts	6-8 Nm	4 mm Allen Key
UDH Hanger	25 Nm	8 mm Allen key
Front Derailleur hanger (on frame)	3 Nm	3 mm Allen key
TT2 Chain Guide Screws	3 Nm	3 mm Allen key
Aero Extensions to TT2 Cockpit	6 Nm	4 mm Allen key

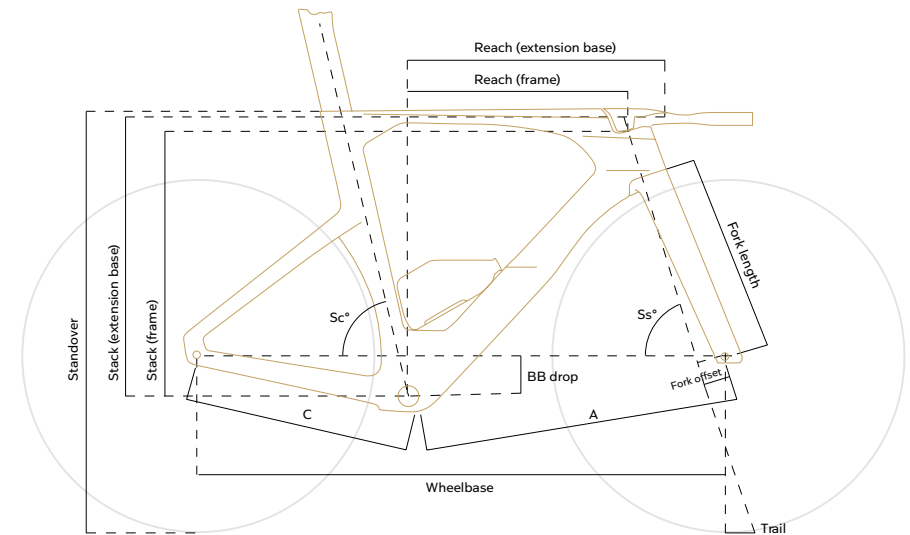
\* The presented table includes torque setting indication provided by Colnago. It is always recommended to check indication provided by each specific component' manufacturer.

# Technical Information

COLNAGO TT2	
Model Year	2027
Frame Size	XS - S - M - L
Available Colors	TT2 raw carbon
Brake Mount Type	Direct Mount disc rear - 140 mm rotor Flat Mount front 140-160 mm
Chainstay Height (Flat Mount)	20 mm
Wheel Size	700c
BB Type	BSA - 68 mm
Upper Headset Bearing Dimensions	30x39x6,5;
Lower Headset Bearing Dimensions	30x39x6,5;
Seatpost	Custom TT2 Seatpost - Available with offset 0 mm and +22,5 mm.
Seatpost Clamp	Custom TT2 Seatpost pushing block
RD Hanger	Standard UDH
Front Axle Dimensions	Thru-axle 12mm - 100 mm hub - 1,5 mm pitch
Rear Axle Dimensions	Thru-axle 12mm - 142 mm hub - UDH Thread - 1 mm pitch
Maximum Tire Width (Actual)*	30 mm with 4 mm clearance

\* Tire measurements shall be taken at the widest point and at the maximum diameter when it is installed on the rim and inflated for at least 24 hours. 4 mm of distance is required between the tire and any frame or fork element.

# Geometry Chart



Size	XS	S	M	L
<b>Stack (Frame)</b>	468	473	501	523
<b>Reach (Frame)</b>	385	400	415	430
<b>Stack (Center of extension base)</b>	499	502	530	552
<b>Reach (Center of extension base)</b>	466	482	497	512
<b>Hs°</b>	71	72.5	72.5	72.5
<b>Ss°</b>	76.5	76.5	77	77
<b>Front Center</b>	571	575	599	620
<b>Chainstays</b>	408	408	408	408
<b>Wheelbase</b>	967	972	995	1017
<b>Fork offset</b>	43	43	43	43
<b>Fork Length</b>	367	367	367	367
<b>Trail (28-622)</b>	70	62	62	62
<b>BB drop</b>	75	75	75	75
<b>Standover</b>	766	771	801	824



**colnago.com**  
info@colnago.com