

 **COLNAGO**



T1RS

assembly
support manual

EN

Table of contents



General Information	05
T1Rs Frame-kit: List of parts	07
T1Rs Cockpit-stem: List of parts	09
List of Recommended Tools and Supplies	10
Seatpost installation	12
Saddle clamp installation	14
Front wheel installation	16
Rear wheel installation	17
Fork and headset installation	18
Fork and headset installation: Pursuit/TT Setup	19
Fork and headset installation: Sprint/Endurance Setup	20
Race transponder positioning	24
Tire clearance	25
Intended Use for Colnago T1Rs	26
Weight Limit	27
Torque and fasteners recommendation	28
Torque setting table	29
Colnago T1Rs - Technical Information	30
Colnago T1Rs - Geometry Chart	31

General Information

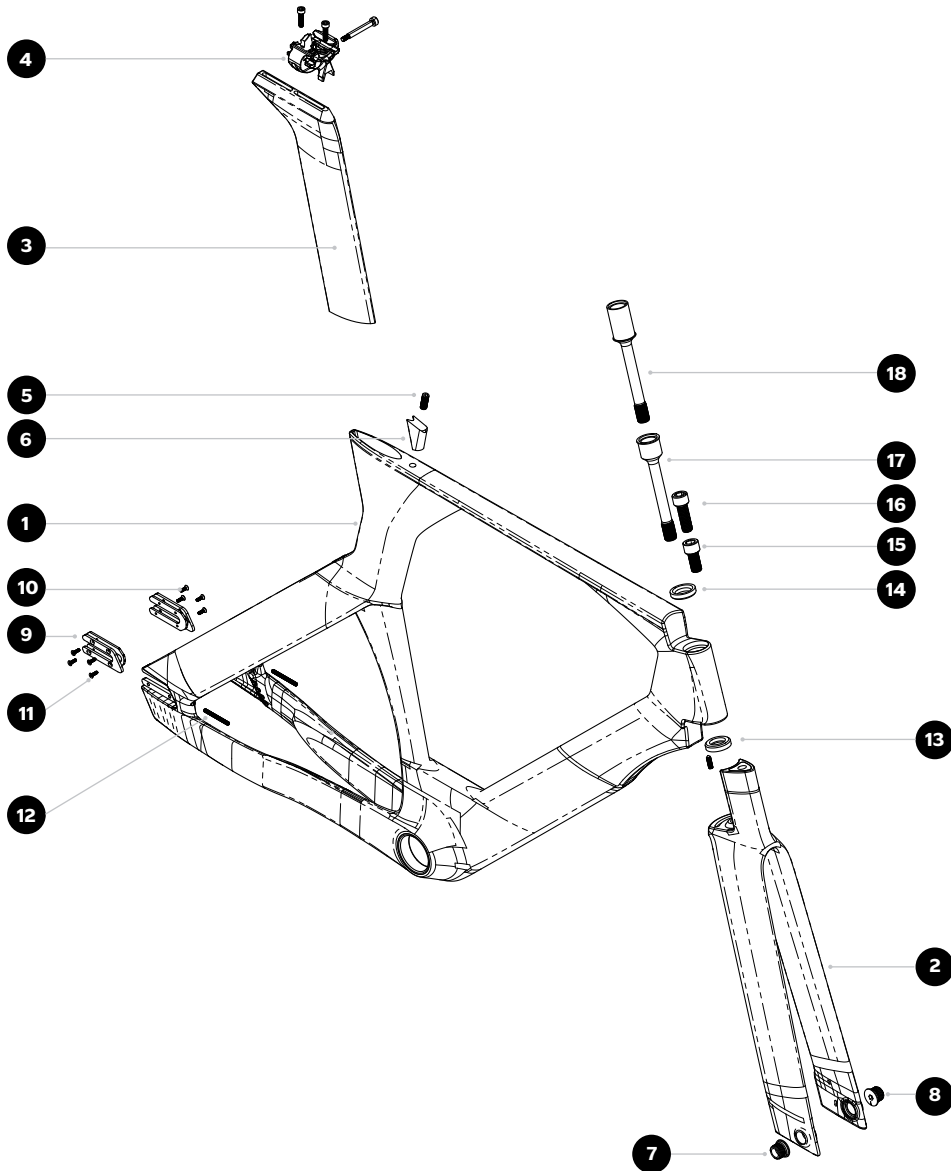


This manual is a guideline for the official Colnago retailers in the assembly and adjustment of the Colnago T1Rs bicycle. It assumes that the assembler is a well-trained professional bicycle mechanic, and, furthermore, it is not intended to replace any assembly and service instruction provided by third-party component manufacturers. If the pictures in the manual are presented to clarify the assembly procedure; real components might slightly differ from the ones in the pictures. This manual shows only the procedure associated with the installation of Colnago parts, as well as the routing of shifting and braking cables. All the Colnago proprietary parts listed below are available only through Colnago and/or its authorized distributors. Failure to use the specified parts and to follow these assembly instructions may lead to serious injury or death.

T1Rs frame-kit

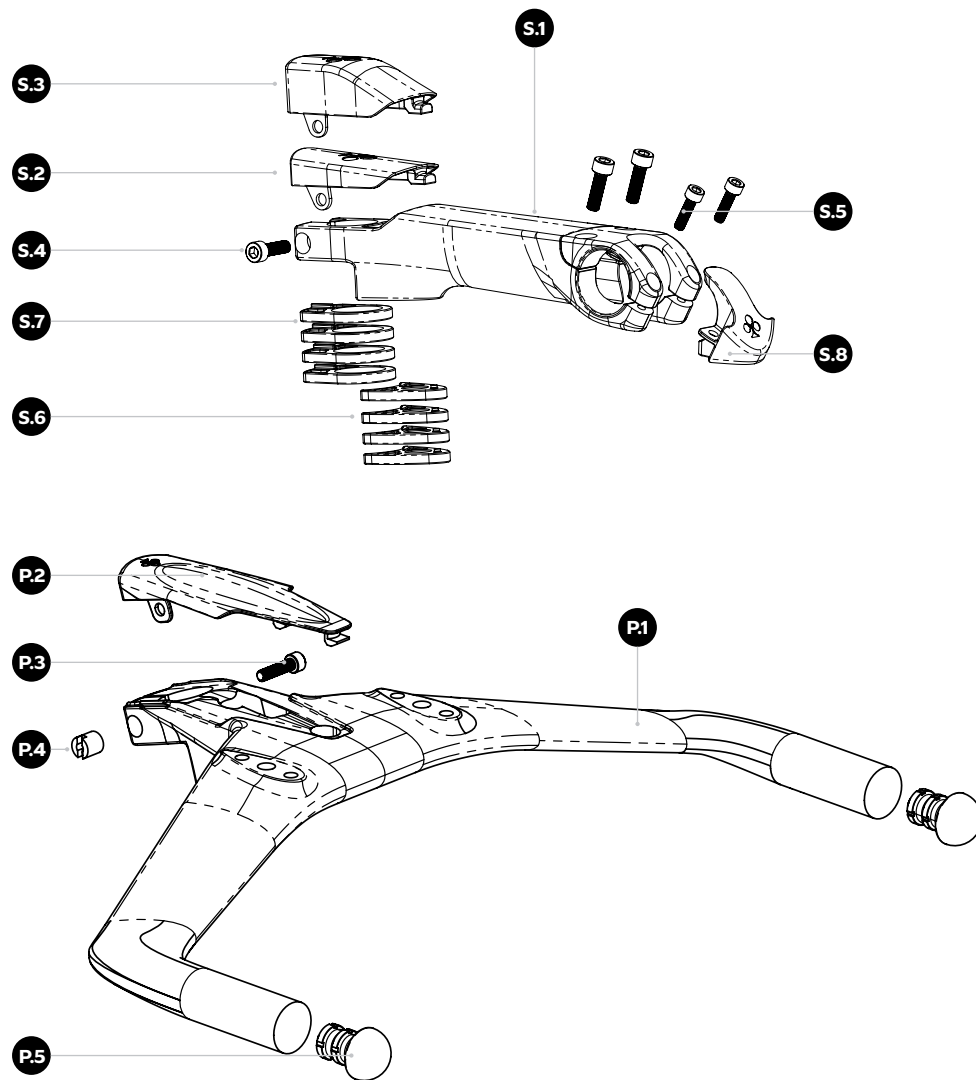
List of Parts

ITEM NO.	DESCRIPTION	QTY
1*	T1Rs - Painted Frame	1
2*	T1Rs - Painted Fork	1
3	T1Rs - TT1 Seatpost - 30 mm offset	1
4	Ritchey Seat Clamp - Time Trial	1
5	M8X20 Headless Screw	1
6	Seatpost Clamp Block TT1 - T1Rs	1
7	Stainless Steel - Front hub plate R	1
8	Stainless Steel - Front hub plate L	1
9	Stainless Steel - Rear hub plate R	1
10	Stainless Steel - Rear hub plate L	1
11	M3x18 Flat head screw	8
12	M4x40 Headless screw	2
13	M5x16 Headless screw	1
14	Bearing 19x30x6,5; 36x45°	2
15	M12X25 Stainless steel socket head screw	1
16	M12X40 Stainless steel socket head screw	1
17*	Stainless steel preload bolt - no spacers	1
18*	Stainless steel preload bolt - spacers	1



T1Rs Cockpit -Stem:

List of Parts



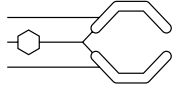
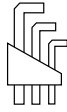
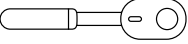
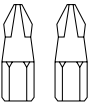
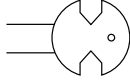
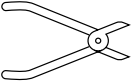

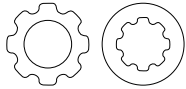

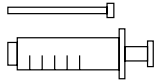
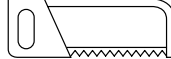
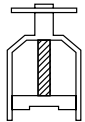

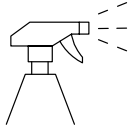
ITEM NO.	DESCRIPTION	QTY
S.1*	SR.Track Stem body + front plate	1
S.2	SR.Track - Rear Plastic Cover - Low	1
S.3	SR.Track - Rear Plastic Cover - High	1
S.4	M6x18 Socket head screw	3
S.5	M5x18 Socket head screw	2
S.6	SR.Track - front alloy spacers 5 mm	4
S.7	SR.Track - rear plastic spacers 5 mm	4
S.8	SR.Track - front plastic cover	1
P.1	Handlebar TT1 Low stack	1
P.2	Cover Track handlebar low stack	1
P.3	M5x20 Socket head screw	1
P.4	M5 custom nut	1
P.5	Plug TT cockpit	2

List of Recommended Tools and Supplies

The following tools and parts listed are required for mounting and adjusting procedures of Colnago parts. Colnago recommends any intervention on the bike to be performed by an authorized Colnago retailer.

Refer to each specific mounting procedure and requirements for the assembly of a specific component, provided its own manufacturer.

NOTE: If you are a Colnago T1Rs consumer/purchaser reading this manual, we suggest you consult your authorized Colnago retailer before undertaking any procedure in this manual.

Bike SupportStand 	Allen key key 2 ÷ 12 mm 	Torque wrenches with 2.5 Nm to 25 Nm 
Phillips and slot head screw-driver 	Pedal wrench 	Cable cutters 
Pliers 	Brake rotor locking tools (inner and outer) 	Di2 wire tool -Shimano 
Hydraulic bleed kit 	Hacksaw (with carbon blades) 	Saw cutting guide 
High quality grease & carbon assembly compound for bikes 	Isopropyl alcohol 	

Seatpost installation

- | | |
|---|-----------------------------------|
| 3 | T1Rs - TT1 Seatpost -30 mm offset |
| 4 | Ritchey Seat Clamp - Time Trial |
| 5 | M8x20 Headless Screw |
| 6 | Seatpost Clamp Block TT1 - T1Rs |

TORQUE 7 Nm

Step 1: Keeping the frame in vertical position, in order to avoid the seatclamp to fall into the frame, gently insert the seatpost clamp block (N.6) in the frame, centering it within its seat. Then insert T1Rs - TT1 Seatpost -30 mm offset, already cut at the desired height into the seat tube.

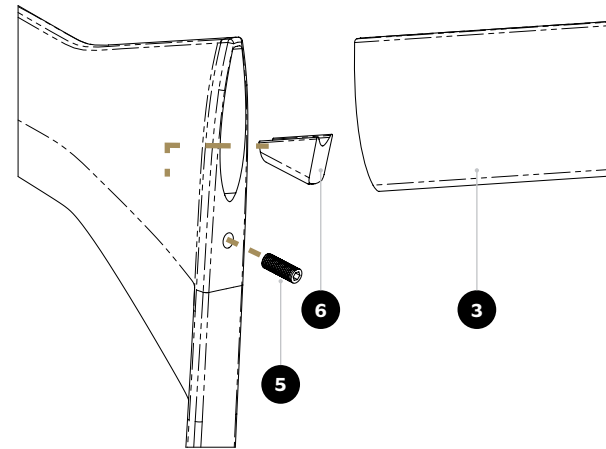
Step 2: Tight the M8x20 Headless Screw (Torque 7 Nm) to fix the seatpost.

IMPORTANT NOTE: minimum seatpost insertion 75 mm

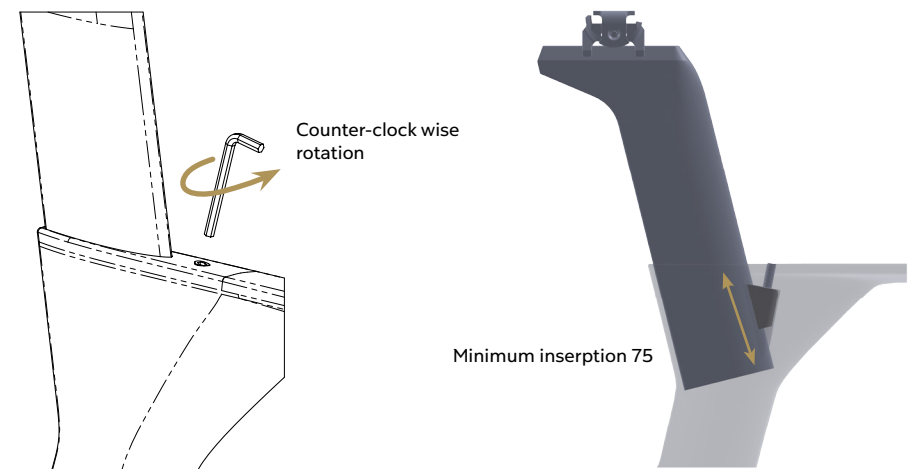
NOTE:

Apply carbon compound both to the inner face of the seat tube and to the carbon seatpost. After installation, hold the frame and bicycle through a secured seatpost only. Clamping the top tube may cause damage and void the frame warranty.

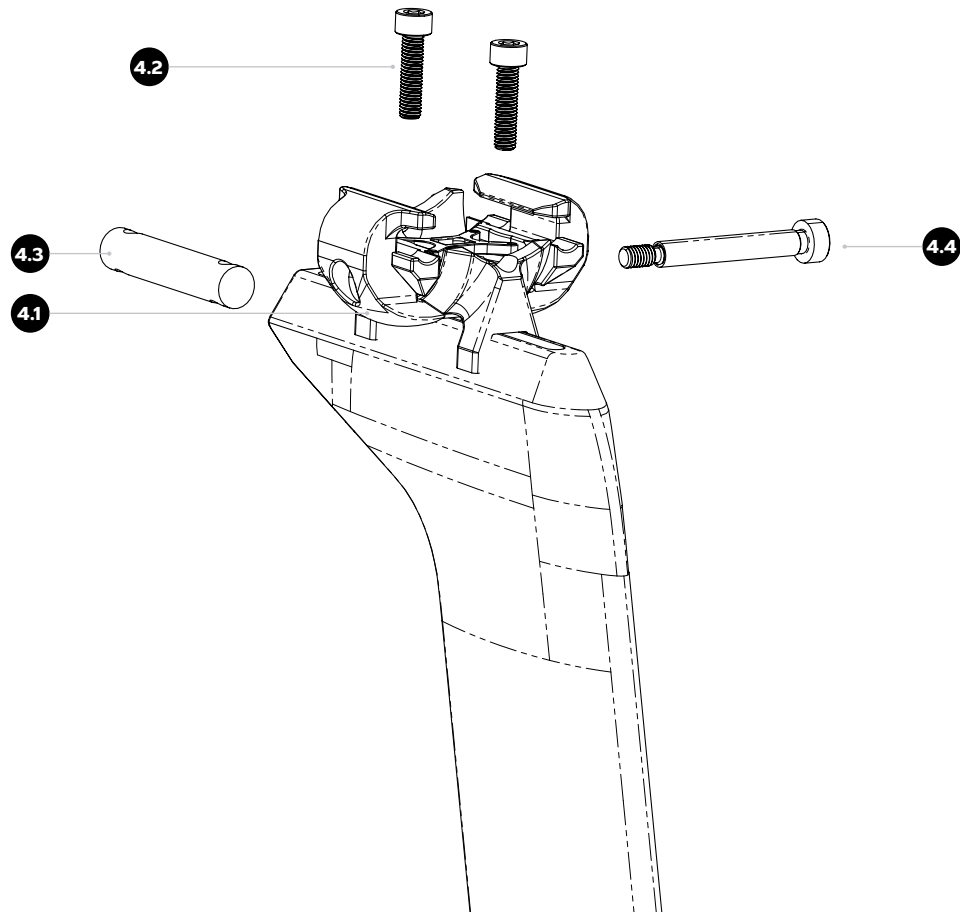
Step 1



Step 2



Saddle clamp installation



4	Ritchey Seat Clamp - Time Trial	
4.1	Ritchey Seat Clamp - Time Trial	
4.2	Ritchey Seat Clamp - Time Trial - Top M5 Screws (2 Pcs)	TORQUE 6-7 Nm
4.3*	Ritchey Seat Clamp - Time Trial - Cylinder	
4.4	Ritchey Seat Clamp - Time Trial - M6 Rail Binder Bolt	TORQUE MAX 12 Nm

Step 1: Insert the cylindrical bracket (**N. 4.3**) in its seat in the seatpost (**N.3**).

Step 2: Fix the saddle mount to the bracket using lightly greased M5 screws (**N.4.2**). Recommended torque 6-7 Nm.

Step 3: Install the lightly greased M6 Rail Binder Bolt (**N.4.4**). Recommended torque 12 Nm.

Step 4: Adjust the saddle position and clamp the saddle rail between the Rail Binder, tightening both screws 4.2 and 4.4 at the recommended torques

Front wheel installation

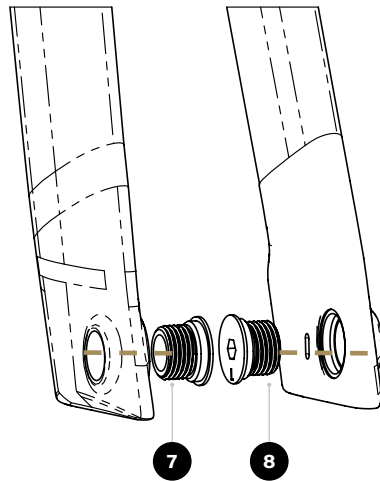
7	Stainless Steel – Front hub plate R
8	Stainless Steel – Front hub plate L

TORQUE 12 Nm

TORQUE 12 Nm

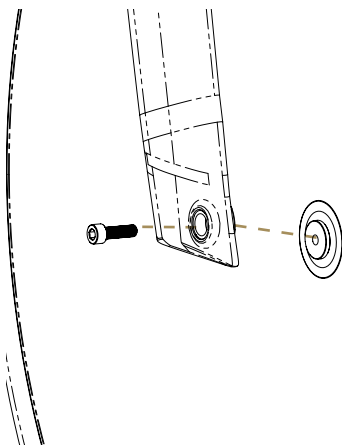
Step 1

Step 1: Screw the Stainless Steel - Front Hub plates in their seats (L – Non drive side; R – Drive Side), after checking the thread-locker is correctly applied on both the parts



Step 2

Step 2: using the 2 M6 Screws provided with the wheelset. Fix the front wheel to the front hub applying the proper torque recommended by the wheel manufacturer



* Follow the wheel manufacturer instruction

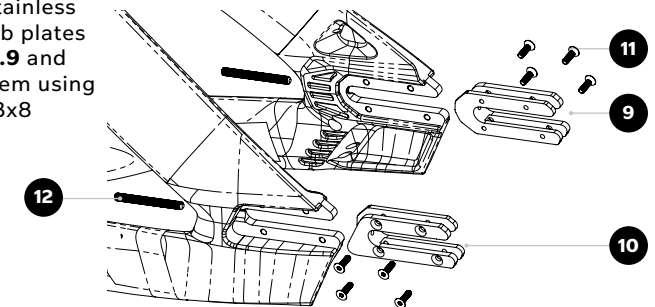
Rear wheel installation

9	Stainless Steel – Rear hub plate R
10	Stainless Steel – Rear hub plate L
11	M3x8 Flat head screw (8 pcs)
12	M4x40 Headless screw

TORQUE 2-3 Nm

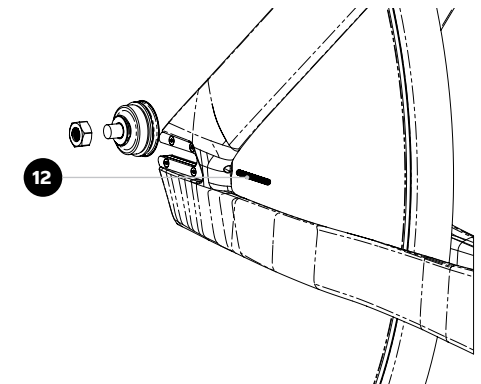
Step 1

Step 1: Fit the Stainless Steel - Front Hub plates in their seats (N.9 and N.10), and fix them using the provided M3x8 screws (N.11)



Step 2

Step 2: Insert the wheel from behind and, after adjusting the hub position in the rail according to the chain length and tension using the M4x40 headless screw (N.12), secure the hub tightening the M10 bolt provided with the wheelset at the torque recommended by wheel manufacturer



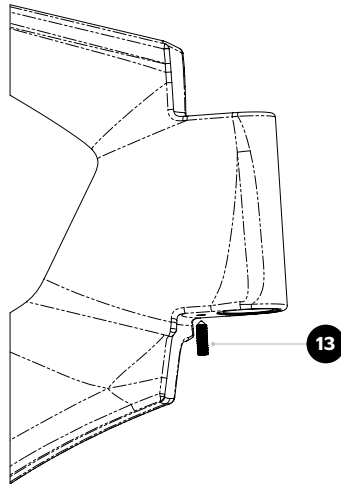
* Follow the wheel manufacturer instruction

Fork and headset installation

13	M5x16 Headless Screw
14	Bearing 19x30x6,5; 36x45°

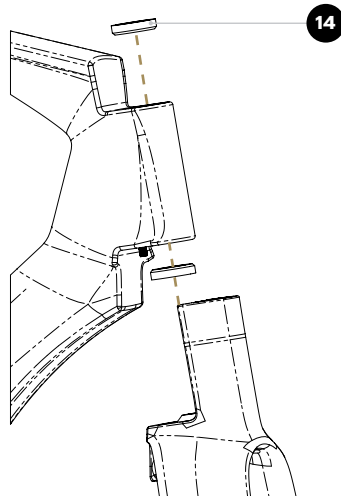
Step 1

Step 1: Screw the M5x16 Headless Screw (**N.13**) in the hole near the lower headset bearing, checking the outer part does not exceed **5 mm**



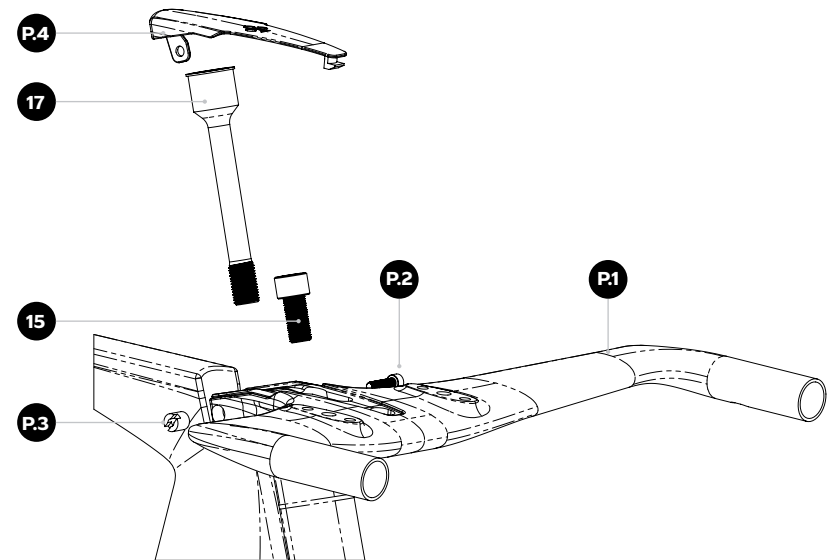
Step 2

Step 2*: After gently greasing the bearings (**N.14**), put them into their sit and position the fork as shown in the picture, with the cone in contact with the lower bearing



Fork and headset installation Pursuit / TT Setup

15	M12x25 Stainless Steel socket head screw	TORQUE 12 Nm
17*	Stainless Steel preload bolt – no spacers	
P.1	Handlebar TT1 Low stack	
P.2	Cover Track handlebar low stack	TORQUE 5 Nm
P.3	M5x20 Socket head screw	
P.4	M5 custom nut	



Step 1: Fix the TT/Pursuit cockpit (**P.1**) to the fork using the M12x25 Stainless Steel screw (**N.15**). Recommended torque 12 Nm

Step 2: Insert the preload bolt. No spacers (**N.17**) through the stem rear hole, headset bearing and head tube, then apply the headset preload by screwing it as needed to remove any play but maintaining a fluid steering action

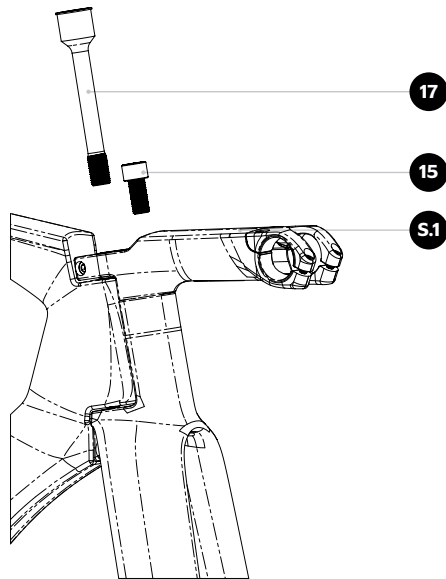
Step 3: Position the TT/Pursuit cockpit plasti cover on the stem and fix the stem with lateral M5x20 screw and nut. Recommended torque 5 Nm

Fork and headset installation

Sprint/Endurance
set up no spacers

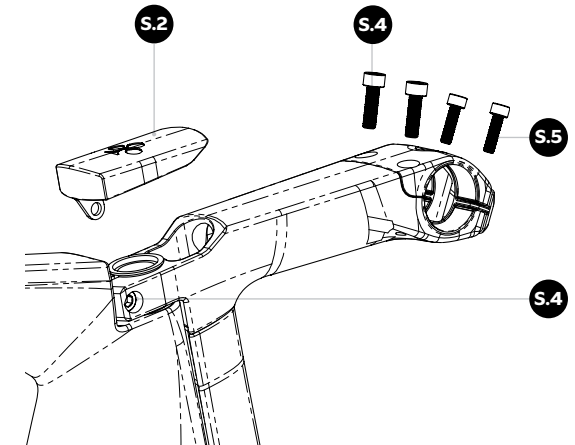
Step 1

Step 1: Fix the SR.Track Stem (S.1) to the fork using the M12x25 Stainless Steel screw (N.15). Recommended torque 12 Nm. Then Insert the preload bolt - No spacers (N.17) through the stem rear hole, headset bearing and head tube. Finally apply the headset preload by screwing it as needed to remove any play and maintaining a fluid steering action.



Step 2

Step 2*: Once the proper preload has been applied, position the Low Plastic cover (S.2) and fix the stem to the preload bolt with the lateral M6x18 screw (S.4) recommended torque 6 Nm. Then fix the desired handlebar using the front cover screws (S.4; S.5) ensuring no gap for the rear ones and applying the fixing torque with the front ones. Recommended torque 6 Nm

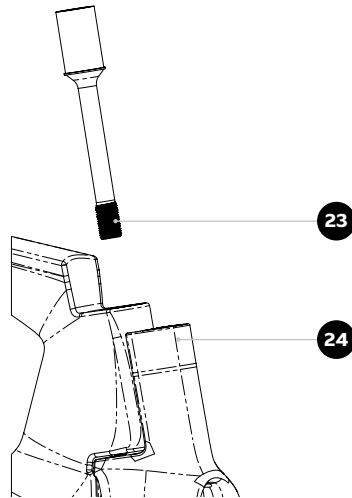


Fork and headset installation

Sprint/Endurance
set up with spacers

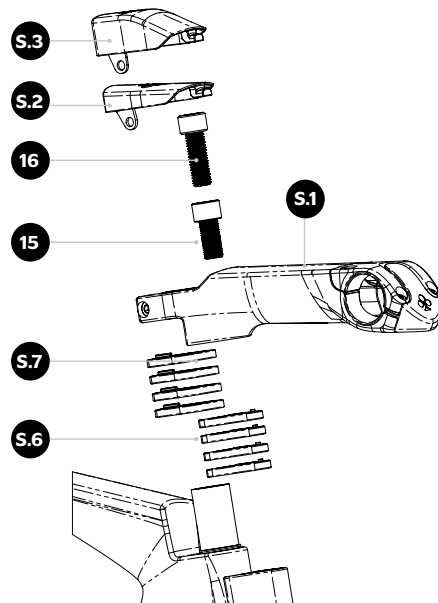
Step 1

Step 1: Fix the fork to the frame using the preload bolt - with spacers (N.18) through the stem rear hole, headset bearing and head tube, applying a mild preload



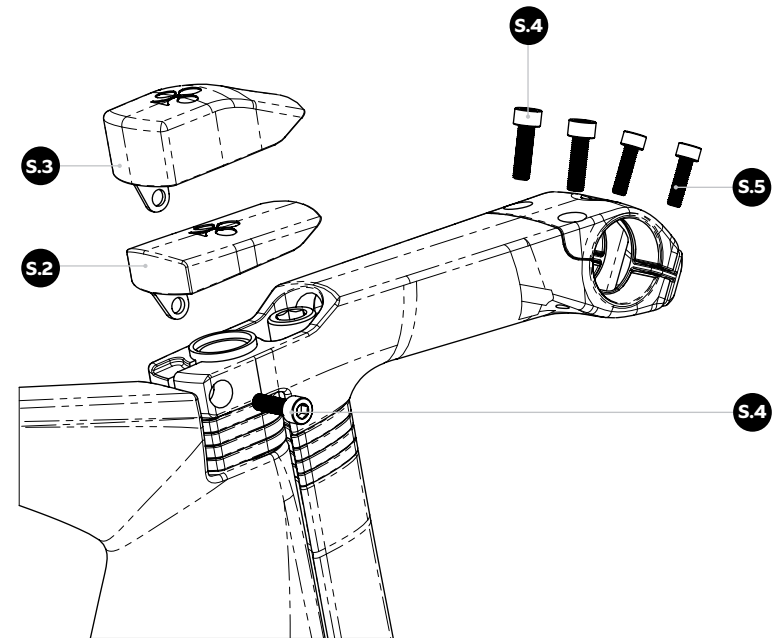
Step 2

Step 2*: Position the desired number of spacers (S.6; S.7) in equal number up to a maximum of 2 cm (4 spacers). Then fix the SR.Track stem with the proper M12 screw (Torque 12 Nm). M12x25 (N.15) for 0 and 1 spacer, M12x40 (N.16) for 2 to 4 spacers



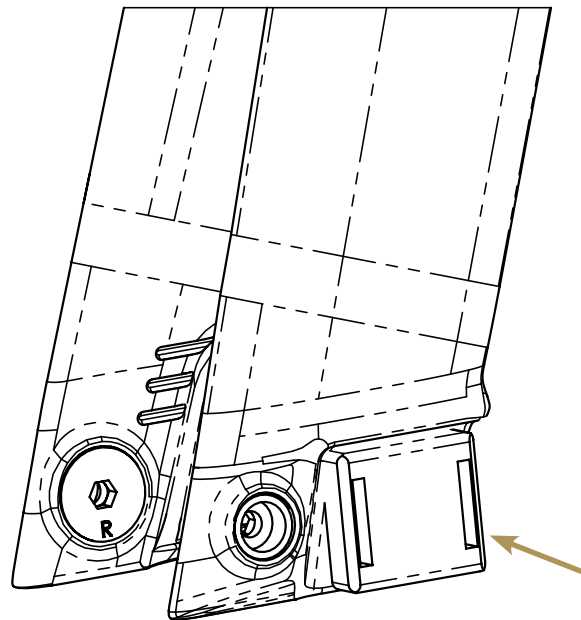
Step 3

Step 1: Once the proper preload has been applied, position the Low Plastic cover (S.2) or the High Plastic Cover (S.3) according to the number of spacers, and fix the stem to the preload bolt with the lateral M6x18 screw (S.4) recommended torque 6 Nm. Then fix the desired handlebar using the front cover screws (S.4; S.5) ensuring no gap for the rear ones and applying the fixing torque with the front ones. Recommended torque 6 Nm



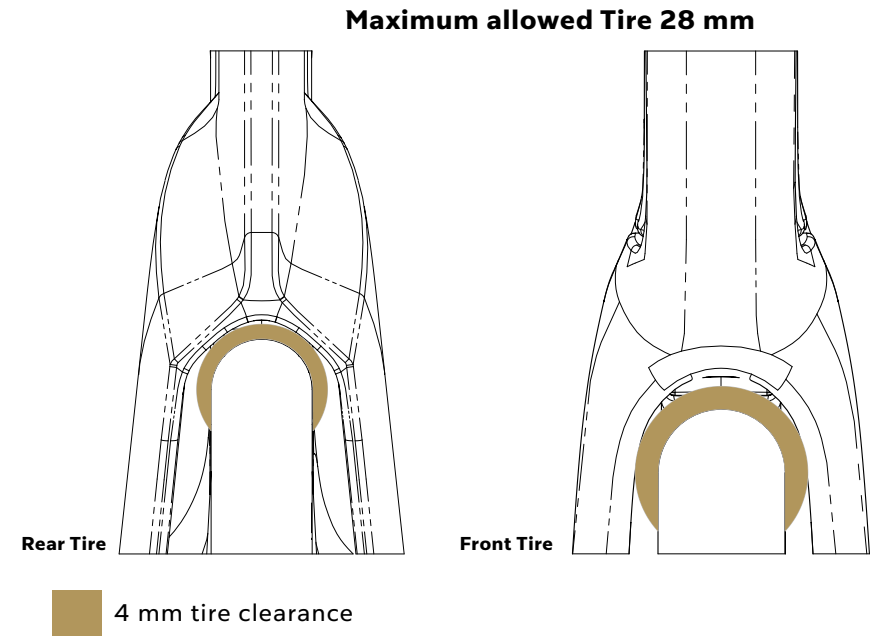
Race transponder positioning

The front fork dropout Non-Drive-Side embed a dedicated race transponder seat behind the rear hub, to minimize the air resistance due to the transponder itself. Different transponder shapes can be positioned and secured using common zip-tights.



Tire clearance

Colnago frames and forks are designed to comply with ISO 4210-2 standard for tire clearance. For the road racing category, a minimum of 4 mm of clearance must remain between the tire and the frame or fork. The effective width and diameter of the tire can vary depending on the tire brand, the rim geometry and dimension and the tire inflation pressure. Colnago always recommends to check and respect the minimum clearance before choosing both front and rear tire.



NOTE: Contact between the tire and the frame or fork may lead to a component or subassembly failure while riding, with potentially serious injury for the rider. Damage to the bicycle due to non-compliant tire clearance is not covered by the bicycle warranty.

Intended Use for Colnago T1Rs

Track - Velodrome - Specific for races and expert users

Intended surface: Colnago T1Rs is designed for competitions and advanced training sessions in indoor and outdoor velodromes

Not Intended surfaces and uses: Colnago T1Rs is not conceived for open-road, off-road, cyclocross, or other applications different from the specific designated velodromes

The Colnago T1Rs is designed to maximize performance in track racing and advanced training sessions. It is important to understand that this type of bicycle is engineered to deliver peak performance for experienced racers or competitive cyclists, typically over a relatively short product lifespan. Due to its racing-specific geometry and intended use, alternative braking systems—other than the fixed rear gear—cannot be installed. As such, riding this bike safely, especially in group rides, requires advanced riding skills. The lightweight / hi-performance frame and components must be inspected regularly. These frames, while high-performing, are more susceptible to damage or breakage in the event of a crash.

WARNING:

Any abuse in the usage is hazardous and may lead to serious consequences.

Weight Limit

Colnago bicycles are tested to a maximum admissible mass* of 110kg.

COLNAGO T1Rs Max Admissible Mass **110kg - 242.5lbs**

NOTE:

Each component has different weight limits, and if replaced can alter the maximum safe bike weight limit, since the most restrictive one is defining the limit of the whole vehicle. Consult your Colnago retailer about what components are suitable for your Colnago Y1Rs.

*Maximum admissible mass is the sum of the bicycle with all its components (groupset, cockpit, wheels, etc.), plus the rider and any luggage or accessory (head unit, filled bottles, storage mounts, etc.).

Torque and fasteners recommendation

To maintain correct tightening torques of all the threaded fasteners is crucial to your safety. Always tighten fasteners to the correct torque. Too high torques can stretch and deform fasteners. Too low torques can cause unwanted fastener movements leading to unfastening and fatigue failures.

Use only a correctly calibrated torque wrench with a proper scale to tighten critical fasteners on your bike. Carefully check to have the proper tools and follow their manufacturer's instructions on how to set and use the tool for accurate results before attempting any adjustments yourself. Before assembling and tightening any bolts, all threads must be greased with a quality, non-lithium type grease unless the bolt is pre-coated with thread locker. All bolts should have either grease or thread locker - but never both.

Colnago recommends the use of carbon assembly compound/friction paste for all areas of clamping to carbon fiber (seatpost to frame, stem to fork, and handlebar to stem joints). Such a paste reduces corrosion potential, and a decrease in required clamping force needed to support a given load. The paste should be evenly spread on the carbon surface under the clamped area.

WARNING:

In case of any doubt or disagreement or a conflict between the following list and any supplier literature on recommended torque values for original equipment components, please contact a Colnago retailer for review and clarification of the required torque before to keep on with the installation.

Torque setting tab*

Colnago is concerned about the resistance and quality of their frames. In order to guarantee the perfect conservation and durability of the frame over time, is important to maintain it correctly, by using a torque wrench.

REASONS WHY TO USE THE TORQUE WRENCH

1. Ensuring the frame and components are not over tightened which can cause damage or from components loosening from being under tightened. Cracks and damages caused by overtightening the bolts are not covered by Colnago Warranty.
2. Avoiding any harm to the cyclist whilst riding, due to the failure of incorrect installation.
3. Frameset and components benefit from a longer lifespan, even after multiple maintenance and service schedules during its lifetime.

DESCRIPTION	MAX TORQUE (approx.)	TOOL
Colnago Seatpost clamp bolt	7 Nm	4 mm Allen key
Ritchey Saddle clamp - top screws	6-7 Nm	4 mm Allen key
Ritchey Saddle clamp - M6 Rail Binder	Max 12 Nm	5 mm Allen key
Bottom Bracket cups	35 -45 Nm, according to BB manufacturer's indication	T47 key
Stainless steel front hub plates	12 Nm with thread locker	6 mm Allen key
Stainless steel rear hub plate M3	2 Nm	2 mm Allen key
Fork M12x25 or M12x35	12 Nm	8 mm Allen key
Preload Bolt	Enough to eliminate steering play and to guarantee a fluid steering action	19 mm Allen key (6 mm for UDH std)
Carbon TT/Pursuit lateral M5 screw	5 Nm	4 mm Allen key
SR-Track Stem lateral M6 screw	6 Nm	5 mm Allen key
SR-Track Stem front M5-M6 screw	6 Nm	4-5 mm Allen key

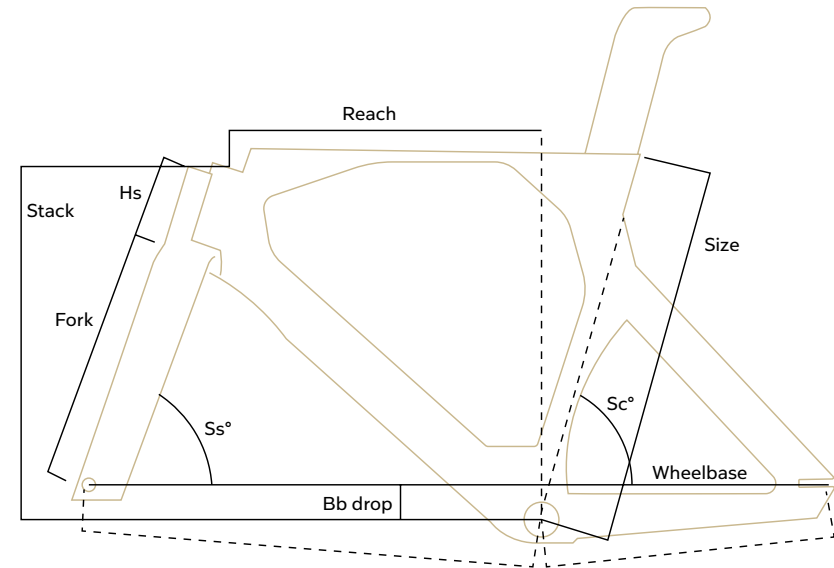
* The presented table includes torque setting indication provided by Colnago. It is always recommended to check indication provided by each specific component' manufacturer.

Technical Information

COLNAGO T1Rs	
Model Year	2026
Frame Size	S - M - L
Available Colors	-
Wheel Size	700c
BB Type	T47 - Asymmetric
Upper Headset Bearing Dimensions	30x19x6.5
Lower Headset Bearing Dimensions	30x19x6.5
Seatpost	Custom T1Rs - TT1 350mm
Seatpost Clamp	Custom T1Rs - TT1 350mm Seatpost pushing block
Front Axle Dimensions	2-M6 screws - 65 mm hub
Rear Axle Dimensions	M10 bolts - 100 mm hub
Maximum Tire Width (Actual)*	35 mm with 4 mm clearance

*Tire measurements shall be taken at the widest point and at the maximum diameter when it is installed on the rim and inflated for at least 24 hours. 4 mm of distance is required between the tire and any frame or fork element.

Geometry Chart



Size	Stack	Reach	Ss°	Sc°	A	C	Wheelbase	HS	Rake	Fork Length	BB drop
S	468	417	73	77.5	594	387	977	75	44.5	372	55
M	494	430	73	77.5	614	387	997	100.5	44.5	372	55
L	520	461	73	76.5	652	387	1036	121	44.5	372	55



colnago.com
info@colnago.com