

Test and validation

24-Lely
Status: Completed

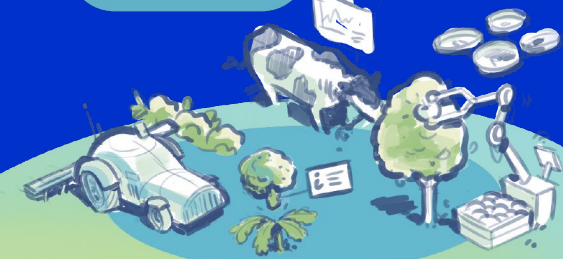


Sustainability aspects
DA-2

Problem owner:
Lely

Involved:
Wageningen Research

Open Field
Cultivation



Mowing robots and meadow birds

Mowing with a forage-harvesting robot and creating a habitat for meadow birds



Broad knowledge question

Mowing robots are narrower and operate at lower speeds than the mowing machines commonly used so far. The broad research question is whether and how the use of mowing machinery can be managed in such a way that meadow birds are able to complete their full breeding cycle.

Approach

A literature review was conducted, and interviews were held with farmers and meadow bird conservationists.

Objective

Within the test and validation trajectory, the aim is to gain a clear and shared understanding of the requirements that robot path planning must meet in order to have a potentially positive effect on meadow birds.

Results and reflection

The main recommendations are to map nests accurately, apply mosaic mowing strategies, and avoid mowing at night in areas where meadow birds are present.

The full [rapport](https://doi.org/10.18174/693233) can be found at doi: [10.18174/693233](https://doi.org/10.18174/693233)