

# Service Bulletin

no. 20, 2017-05-29

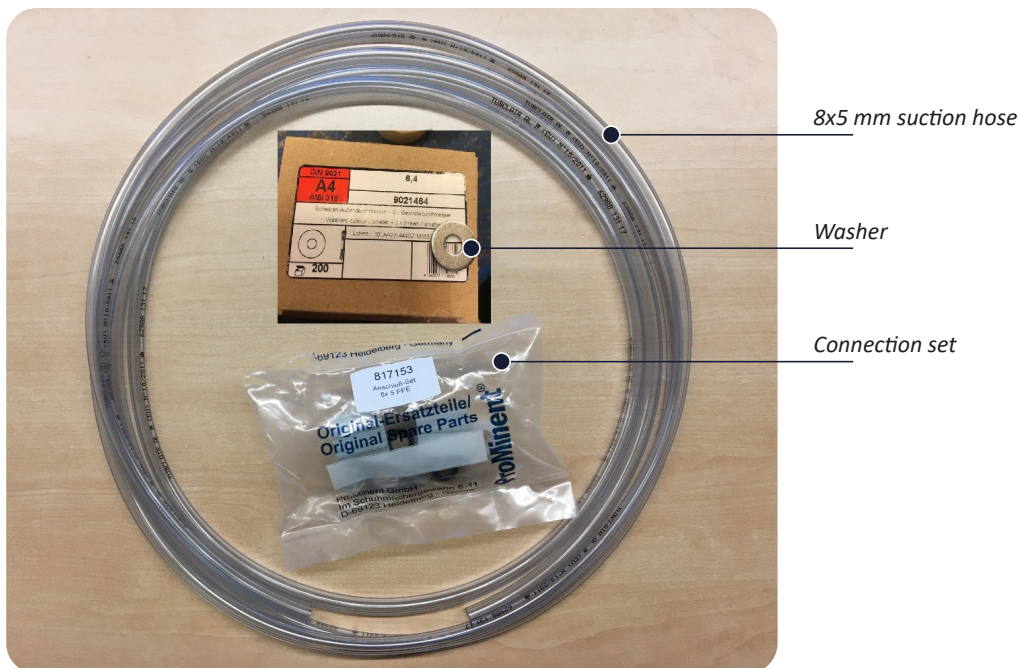
## Flocbooster hose kit for dosage pump (PN 17037, 17039)

*System applicability: Marinfloc CD standard, all models with Gamma L dosage pump (Flocbooster) with part no. 17037 and 17039*

### Background

Under particular circumstances, such as prolonged operation interval, pumping of the Flocbooster may become inefficient. To improve pump efficiency, we recommend upgrading the pump suction line with the below described kit having part number 17026-1.

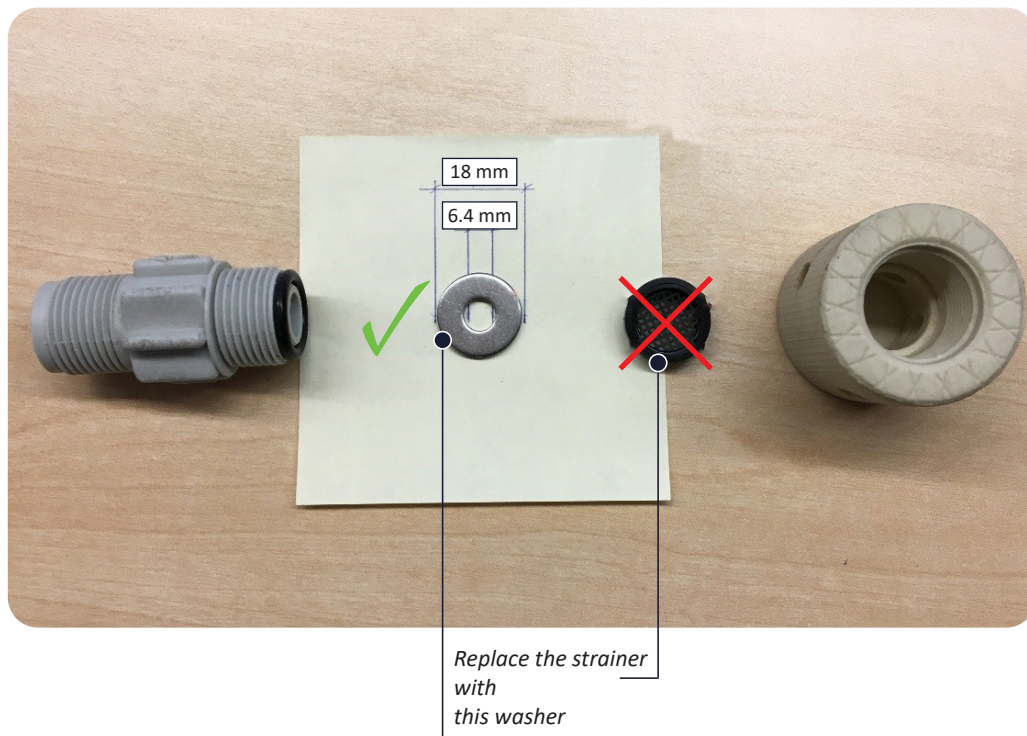
The pump will work more efficiently regardless of the viscosity of the chemical and reduce the need of replacing the complete pump hose kit.



*Dosage pump hose kit, article no. 17026-1*

### Procedure

- Dismantle the existing suction hose from the Flocc booster dosage pump and replace it with the 8x5 mm hose and connection set provided.
- Replace the strainer in the foot valve with the washer as per below picture.



*All previous service bulletins and other important information, e.g. updated lists of approved chemicals and flocculants, can be found on our website [www.marinfloc.com](http://www.marinfloc.com)*