



CRAFTED WITH  
**PRECISION,**  
COATED IN  
**DISTINCTION**

Colorbond®



For decades, COLORBOND® steel has shaped some of the most iconic builds in Malaysia. This journey has been defined by a commitment to continuous innovation, with COLORBOND® steel not just meeting industry standards but transcending them.

We strive for beauty that inspires, for strength that endures and for protection that weathers. We devote great passion and effort to producing COLORBOND® steel, so that your creative visions can be realised, withstanding not only the test of time but becoming legacies of inspiration and resilience.

#### COLORBOND® steel Applications

- Roofing • Walling • Ceiling • Panels
- Gutter • Fences • Sheds



# NOT ALL COATED STEELS ARE CREATED E Q U A L

Because not all coated steels have been perfected for Malaysian weather, and proven to last at that. But COLORBOND® steel has.

With decades of insights from past projects in Malaysia and the backing of Australian technology, COLORBOND® steel is now longer-lasting. Whatever condition it is built in, it has been proven to withstand harsh Malaysian weather and the test of time. A promise we assure with an enhanced warranty of 30 years\*.

Every detail of COLORBOND® steel is meticulously crafted with precision and purpose. From material selection to finishing touches, discover a true masterpiece of coated steels unlike any other.

\* Warranty Terms & Conditions apply.



**The Finest Materials**



**The Best Facilities**



**The Final Touches**

# THE FINEST MATERIALS

At the core of COLORBOND® steel is an unyielding focus on material excellence. We believe that materials are the foremost component of quality. As such, meticulous attention is expended when sourcing our materials, to ensure superiority right from the start.

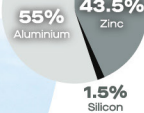
## High-Grade Base Steel

To create a robust coated steel, it is vital to begin with a strong foundation. The core of COLORBOND® steel is made to the highest industry standards and comprises of carefully selected steel coils – mighty and ready to be coated.



## An Optimised Coating Blend

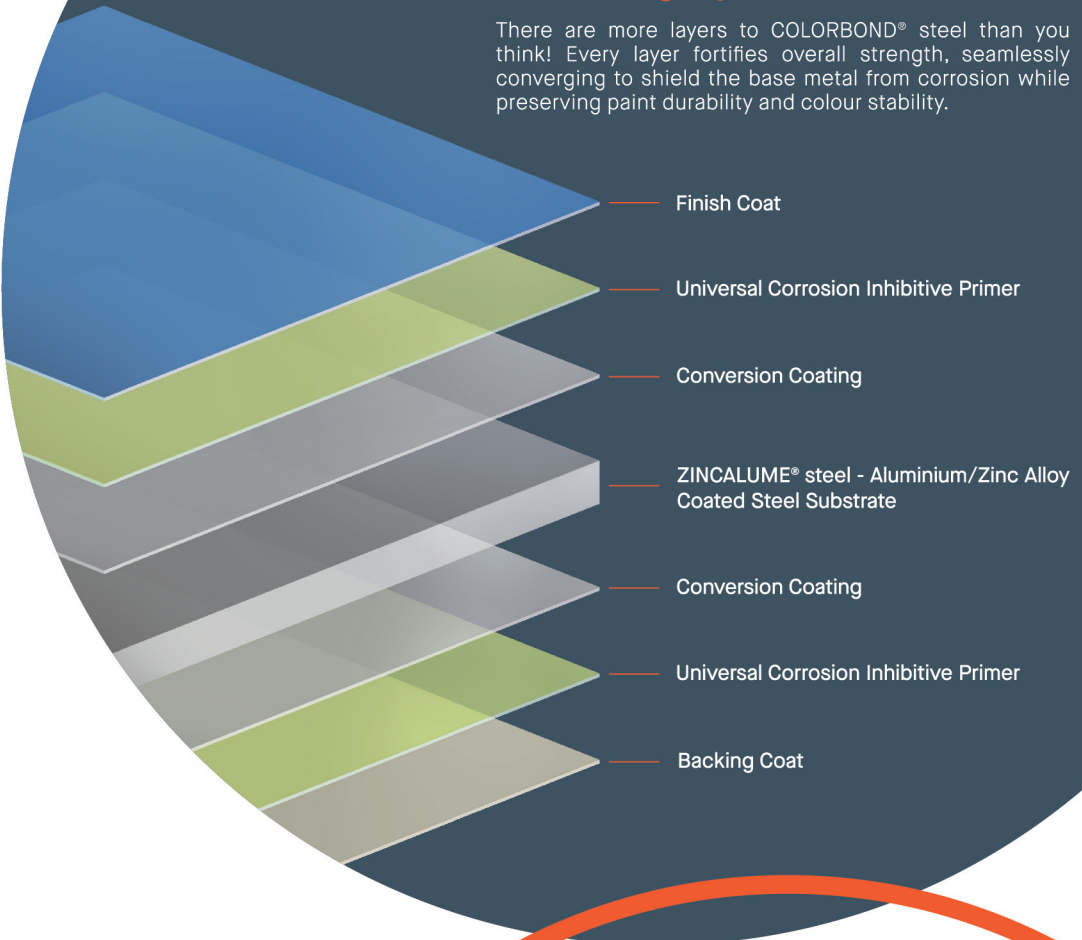
With the right coating, steel transforms to a robust core. For COLORBOND® steel, a proprietary blend of aluminium, zinc and silicon melted in exact ratios coats the base steel. The result: a core with greater corrosion resistance compared to any other coated steel.





## The Bonding Layers

There are more layers to COLORBOND® steel than you think! Every layer fortifies overall strength, seamlessly converging to shield the base metal from corrosion while preserving paint durability and colour stability.



## Proprietary Paint System

Colours can make or break a design, and COLORBOND® steel understands this best. Our proprietary paint system with its optimal formula and unique pigment blends - developed from years of study - delivers both lasting colour and stunning finish options.



## COLORBOND® Steel Experts

For years, our experts have scrutinised actual buildings exposed to Malaysian weather and analysed every field test data. Their work is key to the enhanced durability you can now enjoy in every roll of COLORBOND® steel.

# THE BEST FACILITIES

If materials are the first component of quality, then the right facilities are catalysts of the outcome. At BlueScope's manufacturing plant, advanced machinery and technology support our people in realising the production of COLORBOND® steel.

## Our Factory

Nestled in Kapar, our manufacturing plant is where Australian innovation seamlessly intertwines with local expertise. Within these walls, the integration of man, material, machine and craftsmanship unfolds to produce COLORBOND® steel.



## High-Precision Equipment

With the help of advanced equipment, COLORBOND® steel is manufactured to a consistent level of superior quality. Every instrument is programmed to exact settings required for COLORBOND® steel's strength and durability.







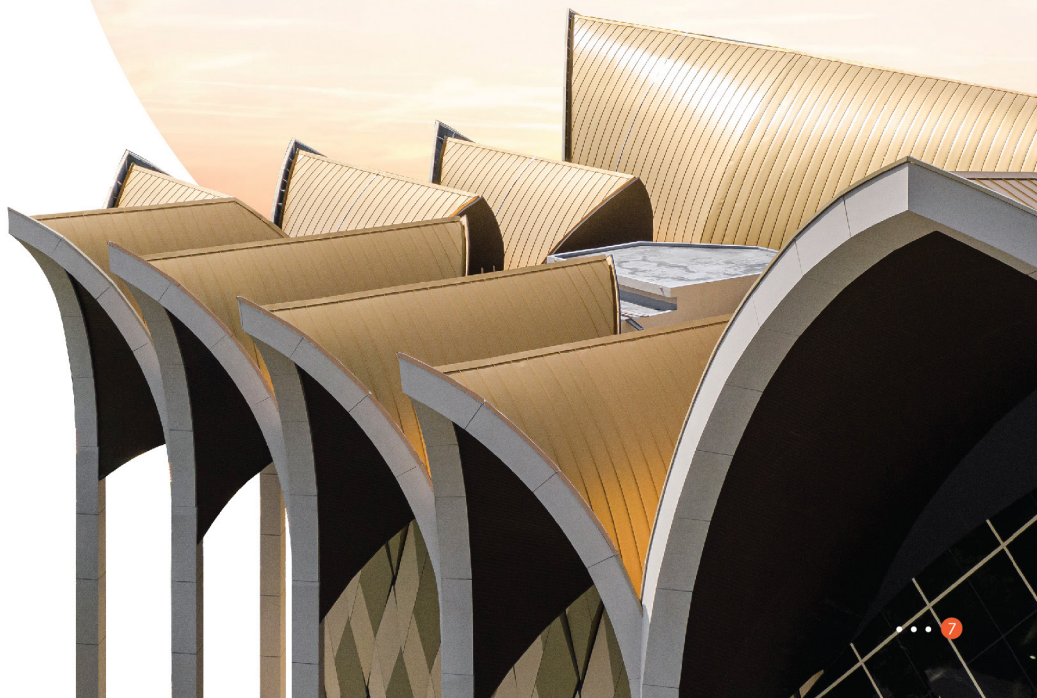
### **Australian Manufacturing Technology**

Perfected in Australia for over half a century, our Kapar plant adopts the technological mastery of the Australian manufacturing process. Their expertise gives us the ability to control timing, temperature, thickness and evenness, ensuring the consistent quality of our coated steels.



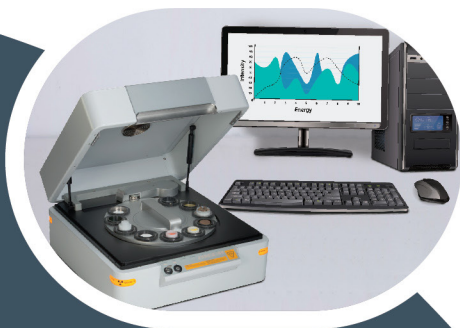
### **Specialised Technicians**

With a sharp eye for detail, our technicians oversee the entire manufacturing process of COLORBOND® steel. Their expertise and hands-on approach ensure each sheet is crafted with precision and abides by the exact formula of flawlessness.



# THE FINAL TOUCHES

The details matter most. COLORBOND® steel is perfected by minute quality controls, whereby details like coating thickness and more are rigorously tested. Microns make a huge difference, and any deviation is obsessed over till the perfect measurements are achieved.



## A Test of Quality & Consistency

From the surface to the core, rigorous inspections are conducted to ensure that our products meet the highest standards. Among these tests are imperative checks and analyses on COLORBOND® steel's coating, strength and colour.

## Metallic Coating Mass Analysis

The durability and longevity of COLORBOND® steel are rooted in the Aluminium/Zinc metallic coating mass, meticulously analysed to ensure optimal quality.



## Tensile Strength Analysis

Crucial for durability assessment, the tensile strength evaluation ensures that each COLORBOND® steel is safe and reliable for all its intended applications.

## Colour Analysis

With every sheet carefully checked for colour consistency and accuracy, COLORBOND® steel will undoubtedly bring your architectural vision to life with vibrant hues.







### **The Ultimate Test in Real Malaysian Weather**

Only time will tell the difference. That's why we leave COLORBOND® steel exposed to actual Malaysian weather for years. Coupled with insights from past projects, the results collected over time are more than just valuable discoveries – they are proof that COLORBOND® steel withstands the test of time, in any weather.



### **Quality Control Analysts**

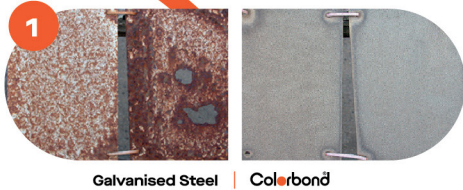
Behind the machinery, a dedicated team of experienced analysts cross-check COLORBOND® steel as they roll off production lines. Deviations are rectified immediately, ensuring every sheet of COLORBOND® steel delivers on our promise of exceptional perfection.



# THE COLORBOND® STEEL ADVANTAGE

This is what every detail, every component and every finishing touch leads to:  
the 5 unparalleled advantages of COLORBOND® steel.

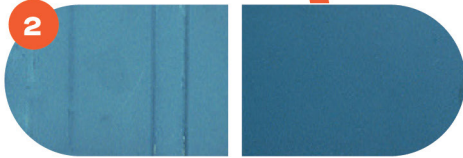
Go on, challenge the boundaries of your builds and designs.  
Be it to protect, beautify or endure, COLORBOND® steel comes with an enhanced  
warranty of 30 years\* – realising creations that last for longer.



Galvanised Steel | Colorbond

## Outstanding Corrosion Resistance

With superior corrosion resistance compared to other coated steels, COLORBOND® steel along with its ZINCALUME® steel substrate core and proprietary paint system safeguard buildings even in severe marine environments.



Conventional prepainted steel  
The steel shows significant colour fading.

Colorbond  
The steel shows little colour change.

## Beautiful Colours for Longer

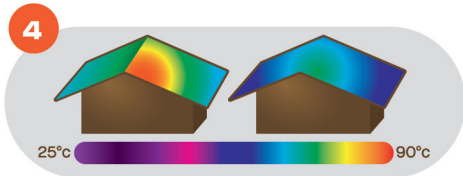
The proprietary paint system protects surfaces from fading, chalking and peeling, ensuring timeless designs that stand out with vivid colour.



Conventional prepainted steel | Colorbond

## Clean Technology

Incorporated into COLORBOND® steel's paint system, Clean Technology prevents dirt from bonding to the surface. Every rainfall washes dirt away easily, preserving the pristine condition of your creations.



Conventional prepainted steel | Colorbond

## Reflects Heat for More Comfort

COLORBOND® steel is also an intelligent heat insulator. It keeps interiors cool with the help of THERMATECH® Technology, which reduces heat transmitted through the roof\*. This contributes to energy conservation and enables better compliance with Green Building rating requirements\*\*.

\* Compared to conventional paint system.

\*\* Subject to building design.



Our Team is Ever Ready to Assist

## Service Support from Design to Build

Get the full picture on COLORBOND® steel's capabilities for your creations. Full support and assistance are provided including Specification Support, Consultation & Risk Assessment, and Advisory Role in Material Quality & Application.



# A FAMILY OF POSSIBILITIES



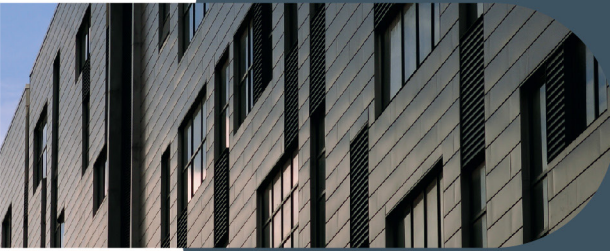
## Colorbond®

The iconic choice of premier coated steels with its superior corrosion resistance and paint weathering.



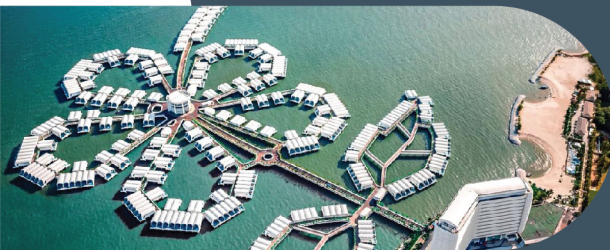
## Colorbond® MATT

Contemporary in appearance yet durable and strong, the matt variant beautifully diffuses light for an elegant design appearance.



## Colorbond® SPECTRUM

Reflect the beauty of a surrounding with this metallic and shiny variant. Buildings become captivatingly alive under varying light conditions and perspectives.



## Colorbond® ULTRA

Designed specifically for coastal and industrial buildings. Thanks to its higher coating mass, you enjoy fortified protection against corrosion. Stylish, timeless yet practical.



## Colorbond® XPD

Elevate the prestige of any architectural icon with premium colour durability and excellent weatherability. This ultimate variant comes with BlueScope's custom-formulated 70% PVDF paint system to deliver magnificence. Also available in pearlescent finish: COLORBOND® XPD Pearlescent steel.



**NS BlueScope Malaysia Sdn. Bhd.**  
199101012824 (223136-P)

Level 11, Tower 8, UOA Business Park,  
No.1, Jalan Pengaturcara U1/51A,  
Seksyen U1, 40150 Shah Alam,  
Selangor Darul Ehsan.

☎ +603 5022 1000

🏠 +603 5022 1001

✉ enquiries.malaysia@bluescope.com

🌐 [www.nsbluescope.com/my](http://www.nsbluescope.com/my)

📺 📱 📷 📺 📷 📺 NS BlueScope Malaysia

**Customer Care: 1 300 88 6288**



**Scan now for more information  
on COLORBOND® steel**

The information contained in this brochure is of a general nature only, and has not been prepared with your specific needs in mind. You should always obtain specialist advice to ensure that any materials, approaches and techniques referred to in this brochure meet your specific requirements.

NS BlueScope Malaysia makes no warranty as to the accuracy, completeness or reliability of any estimates, opinions or other information contained in this brochure, and to the maximum extent permitted by law, NS BlueScope Malaysia disclaims all liability and responsibility for any loss or damage, direct or indirect, which may be suffered by any person acting in reliance on anything contained in or omitted from this document.

COLORBOND®, ZINCALUME® and THERMATECH® are trademarks of BlueScope Steel Limited.

BlueScope is a registered trademark of BlueScope Steel Limited.

Copyright © 2024 NS BlueScope Malaysia Sdn. Bhd. All rights reserved. No part of this brochure may be reproduced, stored in a retrieval system, or transmitted in any form or by any means, electronic, mechanical, photocopying, recording or otherwise, without the written permission of NS BlueScope Malaysia Sdn. Bhd.