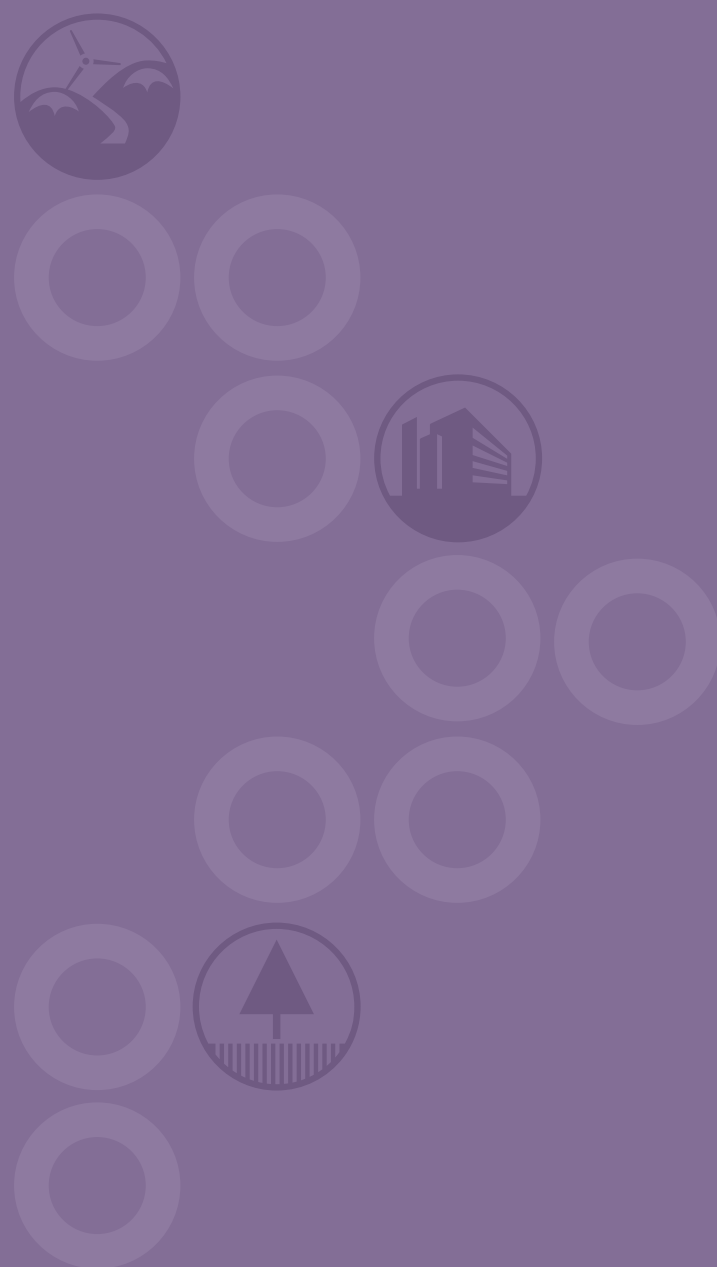
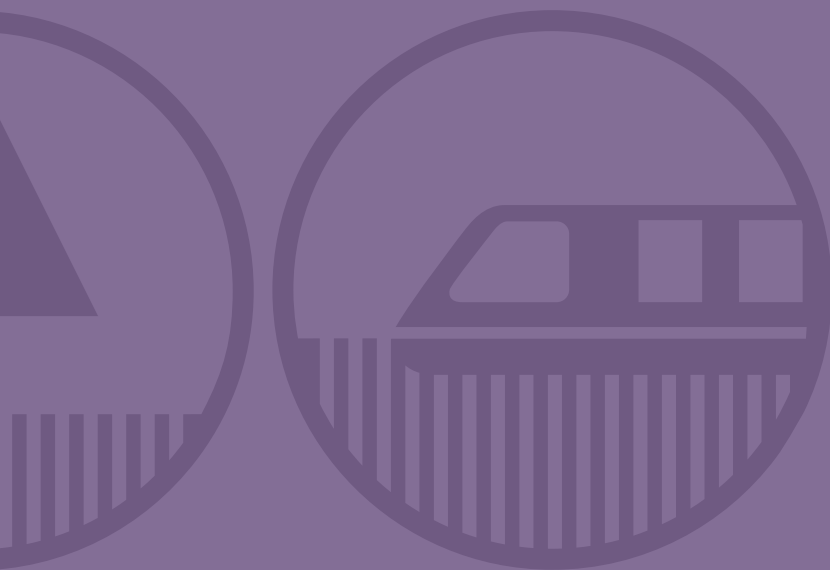




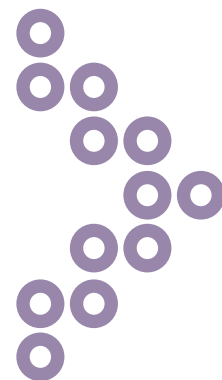
Glasgow and the Clyde Valley
Strategic Development Planning Authority

Annual Report 2021



Constituent Local Authorities of Clydeplan





Clydeplan Joint Committee 2021



Alan Moir
Councillor
East Dunbartonshire



Dennis Johnston
Councillor
East Dunbartonshire



Provost Jim Fletcher
Councillor
East Renfrewshire



Stewart Miller
Councillor
East Renfrewshire



Bailie Glenn Elder
Councillor
Glasgow City



Kenny McLean
Councillor
Glasgow City



Jim Clocherty
Councillor
Inverclyde



David Wilson
Vice Convenor
Inverclyde



Agnes Magowan
Councillor
North Lanarkshire



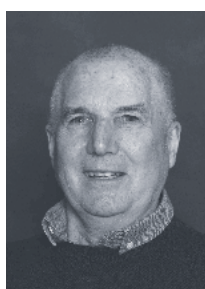
Harry Curran
Councillor
North Lanarkshire



Marie McGurk
Councillor
Renfrewshire



Tom Begg
Councillor
Renfrewshire



John Anderson
Councillor
South Lanarkshire



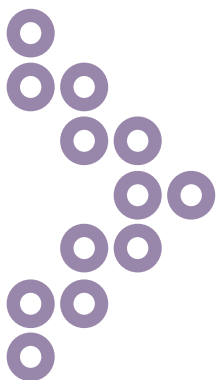
Alistair Fulton
Councillor
South Lanarkshire



Jonathan McColl
Councillor
West Dunbartonshire



Lawrence O'Neill
Convenor
West Dunbartonshire



Convenor's Column

2021 has been another very challenging year for everyone. As we move into whatever is the new 'normal' spatial planning has a very important role to play by creating places which are better connected in terms of how we now wish to live, work and play.

As Scotland's new planning system starts to emerge with the publication in November by the Scottish Government of the Draft Fourth National Planning Framework (NPF4) Clydeplan will continue to actively seek that the role of regional planning still has an important role to play especially in the consideration of cross local authority boundary issues and matters of cumulative impact.

The Draft NPF4 is now a very important planning document as for the first time it forms part of the statutory Development Plan system along with the Local Development Plan.

Clydeplan is therefore keen to ensure the NPF's Spatial Strategy and related National Planning Policy Handbook provide a positive context for the Glasgow City Region to flourish and in particular to address the three Grand Challenges set out in its Regional Economic Strategy (December 2021) namely creating an inclusive economy, enhancing productivity, and addressing the climate emergency.

In this respect it is important that the City Region focuses on a transformational place agenda which seeks to

- tackle deprivation;
- reimagine places;
- address the levels of vacant and derelict land;
- develop metropolitan infrastructure including green infrastructure;
- deliver high quality places and spaces; and
- deliver affordable housing.

As Convenor of Clydeplan I would encourage those with an interest in this important planning agenda and as we look to adapt Scotland's largest City Region to the new 'normal' to become involved with Clydeplan to ensure regional spatial planning play its rightful role in that journey.

Councillor **Lawrence O'Neill**

Convenor Clydeplan





Introduction

The eight Clydeplan Local Authorities are committed to strategic planning and working in partnership with a wide range of stakeholders in support of the delivery of its Vision and Spatial Development Strategy as set out in the Clydeplan Strategic Development Plan for the Glasgow City Region which was approved by Scottish Ministers on 24th July 2017.

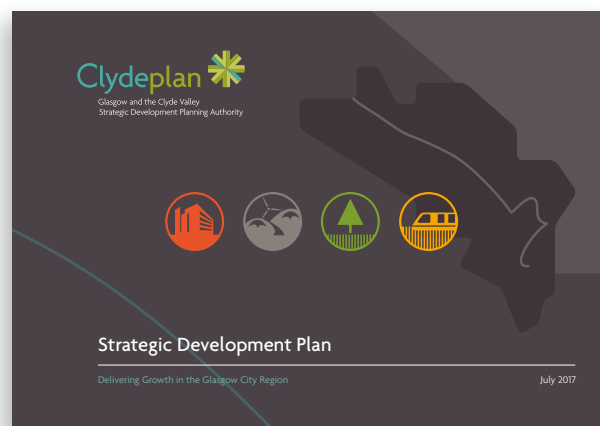
The Clydeplan Strategic Development Plan provides a sound foundation upon which the city region can deliver growth for Scotland's largest city region and a context for its Local Authority Local Development Plans, Local Housing Strategies and Development Management decisions as well as supporting the Glasgow City Region's Economic Strategy.

The scale of work that has been undertaken by Clydeplan during 2021 has only been made possible by the willing support that it has gratefully received from both private and public sector partners.

These include the Scottish Government, Scottish Enterprise, Scottish Environment Protection Agency, Historic Environment Scotland, Strathclyde Partnership for Transport, Glasgow Airport, Transport Scotland, Scottish Forestry, NatureScot, Climate Ready Clyde, Glasgow and Clyde Valley Strategic Environment Partnership, Clyde Marine Planning Partnership, Green Action Trust, Glasgow Centre for Population Health, Public Health Scotland, Metropolitan Glasgow Strategic Drainage Partnership, Scottish Water Homes for Scotland, Glasgow University, Strathclyde University and Heriot Watt University.

This report sets out the work that has been undertaken by Clydeplan along with its partners during 2021.

Further information on the work of Clydeplan can be found at www.clydeplan-sdpa.gov.uk



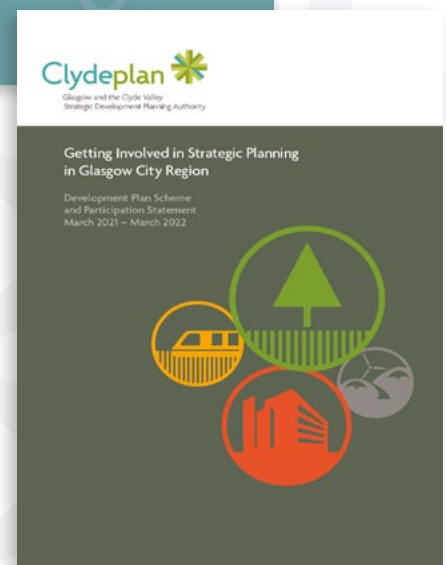
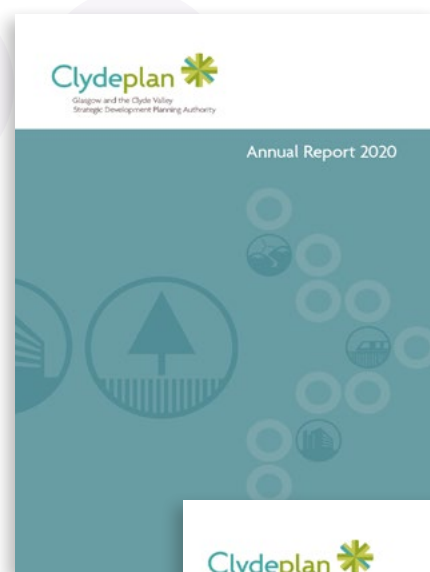


Clydeplan Joint Committee

The Clydeplan Joint Committee met four times during 2021 in March, June, September and December. Details of the meeting's agendas, papers and minutes can be found at <https://bit.ly/2TAaTZo>

During 2021 the Joint Committee published its Annual Report 2020 and its Development Plan Scheme and Participation Statement 2021/2022.

In December 2021 the Joint Committee approved its revenue budget for the period 2022/23.



Glasgow City Region

During 2021 Clydeplan continued its support for the various work streams of the various Glasgow City Region thematic portfolios including Land Use and Sustainability, Infrastructure and Assets, Housing and Equalities, Transport and Connectivity based portfolios and both the Economic Delivery Group and the Intelligence Hub.

Clydeplan's involvement with the Glasgow City Region activities is likely to continue to grow and develop during 2021 particularly given the economies of scale and general benefits that can be gained through city region scale joint partnership working.

Clydeplan actively supported the development of the City Region's new Regional Economic Strategy which was approved by the Glasgow City Regional Cabinet in December 2021.
<https://glasgowcityregion.co.uk/regional-economic-strategy/>

This regional joint working approach also supports the Planning (Scotland) Act which seeks for local authorities, working together, as groupings to support the delivery of National Planning Framework 4 through the development of Regional Spatial Strategies.



Planning (Scotland) Act 2019 – Regional Spatial Strategies and National Planning Framework 4

The Planning (Scotland) Act which was enacted on 25th July 2019 removes the statutory requirement to prepare a Strategic Development Plan and replaces it with a duty for planning authorities to work together to prepare and adopt a 'Regional Spatial Strategy'.

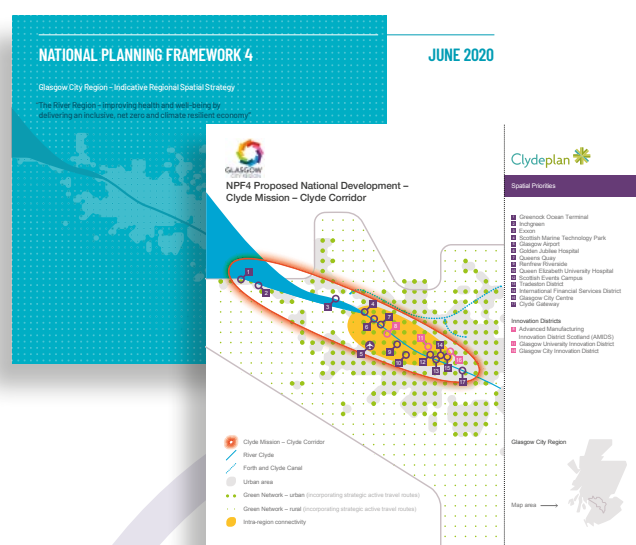
The eight Clydeplan Local Authorities have agreed to continue to work together to prepare a future Regional Spatial Strategy for the Glasgow City Region.

The formal duty to prepare a Regional Spatial Strategy will come into effect once National Planning Framework 4 is approved which is anticipated to be in the summer of 2022.

As part of the Draft National Planning Framework 4 which was published for consultation in November 2021 the Scottish Government stated that new Regional Spatial Strategies can identify areas for future population growth, align with regional economic strategies and identify key sectors and clusters for future development and investment.

Regional Spatial Strategies should also set out a clear place-based spatial strategy that guides future development across different areas of Scotland. This will include identification of networks of regionally significant centres, growth and investment areas and ensuring that future development and infrastructure works with each area's assets and whilst conserving and enhancing nationally and regionally recognised natural and historic areas and assets.

The Scottish Government have stated that Regional Spatial Strategy guidance will be published late in 2022.



Glasgow and the Clyde Valley Green Network Partnership Evolution

Since the establishment of the GCV Green Network Partnership in 2007, the first partnership of its type in Scotland, green networks and related thinking has developed significantly much of which has been at the instigation of the work of the GCVGNP team including

- the Central Scotland Green Network has been established as a National Development in NPF3 and proposed to continue as a National Development in NPF4,
- the GCV Green Network 'Blueprint' has been endorsed by the Glasgow City Region Cabinet and featured in the Scottish Government's 2019/20 Programme for Government.
- the development and launch of the 'Clyde Climate Forest';
- the development of Green Infrastructure policy advice.

The role for green networks have also been identified as an important component of the city region's green recovery from the current Covid-19 pandemic.

In addition the team provides support for amongst others the constituent local authorities, key agencies, Green Action Trust and Scottish Government in terms of strategy development, policy development, shared learning and project delivery.

Given the development and publication of the Green Network 'Blueprint' (www.gcvgreennetwork.gov.uk/what-we-do/our-blueprint) and its focus on delivering both a strategic access network and strategic habitat network across the city region aligned to staffing changes in the Green Network Team it was considered an opportune time to evolve the Green Network Partnership into a more delivery focussed partnership working model, the 'Strategic Environment Partnership'.

The Partnership will enable a stronger focus to be put on delivering the core elements of the Green Network 'Blueprint' and also facilitate the greater integration of the strategic environmental planning work of Clydeplan.



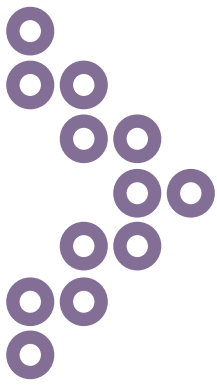
Annual Accounts and Audit Report

The Joint Committee's Annual Audited Accounts and Audit Report for the period to 31st March 2021 were approved on 13th September 2021. Both documents are published on the Clydeplan's website.

Priorities and Issues affecting the future work of Clydeplan

The priorities for the future work of Clydeplan will be influenced, amongst other things, by

- the Planning (Scotland) Act 2019 and the requirements in relation to strategic planning and the National Planning Framework 4;
- continued joint working with key stakeholders in support of the delivery of the Strategic Development Plan's Spatial Development Strategy and its related Action Programme <https://bit.ly/2HehFzV>
- ongoing developments around Glasgow City Region in terms of governance, subject based portfolios, City Deal and support for the delivery of the Glasgow City Region Economic Strategy and Action Plan; and,
- continuing challenges of delivery in the context of reduced financial and local authority planning staff resources.



Clydeplan

Floor 2, Room 29, 40 John Street, City Chambers East, Glasgow G1 1JL

0141 229 7730 • info@clydeplan-sdpa.gov.uk • www.clydeplan-sdpa.gov.uk • @Clydeplan