

Amtico Projects

Ramside Hall Hotel



Project Information

Location

Durham

Sector

Hospitality & Leisure

Collection

Amtico Signature

amtico
flooring



↗ Featured
Reclaimed Oak

Project

Ramside Hall Hotel

Location

Durham

Sector

Hospitality & Leisure

Collection

Amtico Signature

Product

Reclaimed Oak and
Pure Plain Black stripping

Laying Patterns

Castel Weave and Small Parquet



Featured
Reclaimed Oak



Dove is Ramside Hall Hotel's latest luxury treehouse, situated within the woodland adjacent to the 18th fairway of The Prince Bishops golf course in Durham. The spacious, 10-person retreat boasts a mezzanine, kitchen, terrace and three bedrooms, while the large lounge also allows the venue to be used for functions and events.

The Dove treehouse provides guests with a tranquil and relaxing place, due to the surrounding nature. The rustic interiors feature Amtico LVT wood flooring from the Signature collection, chosen for its design-led aesthetics, colour palettes and durability to withstand heavy footfall, while still maintaining a fresh and new look.



Featured
Reclaimed Oak

Woodland style

The luxury Dove treehouse is an extension of Ramside's three existing treehouses, located next to the golf course. Dove follows the same woodland-inspired design principles, with the colour palette and materials reflecting the surroundings with rustic stone and wood-clad walls, decorative foliage and beautiful, eye-catching Amtico flooring. The lounge area features Signature Reclaimed Oak laid in Castel Weave, a luxurious laying pattern that creates a statement – even in large event spaces or places of ceremony. It is surrounded by timeless Parquet in the same Reclaimed Oak LVT, which extends into the hallway and kitchen area.

Perfect choice

Unique and vast, the lounge area will be used for various events and occasions, although its main function will be as a wedding venue. Amtico Signature's Quantum Guard Elite layer makes it perfect for the treehouse's multi-use space, while providing protection against abrasive debris, scuffs and scratches, particularly when staff re-arrange the furniture between ceremonies. The lounge also boasts full-height windows to allow natural light to flood the space, so the LVT's UV resistance is essential for ensuring a fade-free finish.





amtico signature

A unique palette of colours and shapes to create inspiring flooring design.

This sophisticated collection combines original palettes, distinctive patterns and stunning details. The design-led, high-performance LVT products have a total thickness of 2.5mm and a 1mm wear layer. Signature products also carry a 20-year warranty.



Featured
Reclaimed Oak

218
Products

23
Signature
Laying Patterns

3
Ways to Specify



20YR COMMERCIAL
WARRANTY

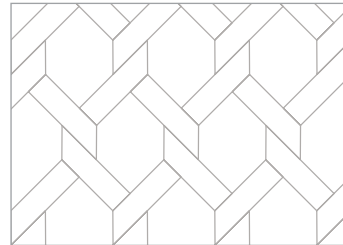


amtico signature

Laying pattern

Castel Weave

Inspired by the beauty of traditional parquetry, Castel Weave allows wood grains and textures to shine. The pattern has a high-end feel suited to large spaces, while the artisan and luxurious combination of the laying pattern and Signature Reclaimed Oak makes it the top choice for the Dove treehouse.



Castel Weave

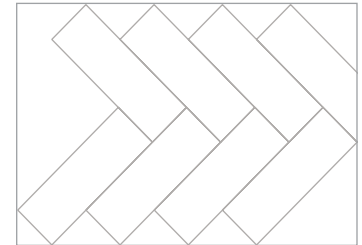


Reclaimed Oak
AROW7870

Laying pattern

Small Parquet

This timeless, eye-catching design was utilised throughout the main areas of the treehouse to provide a classic feel. The use of this pattern helps the interior maintain a magical, woodland feel, as well as deliver a seamless transition between the lounge, hallways and kitchen.



Parquet



Reclaimed Oak
AROW7870

Bold statements. Big ideas. What our clients say.

“Amtico always produces high-quality, durable products that stand the test of time while also being available in different styles and designs. This made Amtico the obvious choice for the treehouses to withstand the different uses of the space. The pattern choices fit perfectly within the whole design of the treehouse knitting together every aspect, and Bartram fitted the flooring carefully ensuring the intricate Castel Weave design was installed beautifully.”



Emma Richardson
Lead Designer
Space ID

“We use Amtico flooring time and time again, primarily for its aesthetic, but also because it is easy to clean and low maintenance, therefore cost-effective. Amtico Signature is always made to the highest standard – it looks and feels luxurious. The timber-style LVT not only looks good individually but also replicates the surrounding trees of the treehouses. The comparability to real natural materials makes it an easy flooring solution that maintains the visual appeal design-wise.”



Helen Roseberry
Director
Ramside Estates

“The Amtico Signature products specified were the perfect choice for the woodland scheme. We were well aware how great it is to install, so had every confidence we’d end up with the perfect result. Our team of fitters have shown true craftsmanship in installing a design and layout like this, as it takes time and experience to achieve such a stunning fit. Amtico Signature was a fantastic choice by Space ID and, due to the nature of the product, it’s ideal for a busy holiday-let market, thanks to its durability, while a high-end luxury feel is maintained throughout.”



Kathryn Tatton
Managing Director
Bartram Flooring

Collection Overview

Hard surface

▼ Glue Down LVT

		Wear layer	Acoustic option	Warranty (years)	Total products	Total sizes
amtico signature	A unique palette of colours and shapes to create inspiring flooring design.	1 mm	✓	20	218	13
amtico signature 36+	Safety flooring with design sophistication.	1 mm	✓	20	36	11
amtico form	Design-led flooring with natural textures.	0.7 mm	✓	12	36	5
amtico spacia	Simple, accessible design-led flooring solutions.	0.55 mm	✓	10	94	7
amtico spacia 36+	Slip-resistant tiles and planks with unrivalled design clarity.	0.55 mm	✓	10	90	6
amtico first	Light commercial flooring with all the benefits of Amtico.	0.3 mm		7	36	4

▼ Loose Lay LVT

		Wear layer	Acoustic option	Warranty (years)	Total products	Total sizes
amtico access	Loose lay flooring that's quick to install.	0.55 mm		10	24	3
amtico clicksmart	Easy-fit click flooring with a rigid core.	0.55 mm		10	33	2

Specialist

▼ Glue Down

		Wear layer	Acoustic option	Warranty (years)	Total products	Total sizes
amtico marine	Marine standard flooring , tailored to you.	0.55 mm		10	32	8

Soft surface

▼ Tile

		Pile thickness	Fibre	Warranty (years)	Total products	Total sizes
amtico carpet	High-performance carpet tiles that integrate with our LVT collections.	2.6 - 7.4 mm	6,6 nylon and polyamide	10	76	3
amtico entryway	Tough, resistant entrance tiles that protect your Amtico floor.	4.2-5.4 mm	6,6 and solution dyed nylon	10	16	2

Amtico Standards

Our ethos is to combine creativity and innovation with the highest levels of quality – design, manufacturing, product and service.



All Amtico LVT products comply with Indoor Air Comfort Gold version 6.0 and are certified as low emissions products contributing to a healthy indoor environment.



All Amtico LVTs (excluding Spacia 36+ and Signature 36+) and Amtico Carpet is certified as a low emissions building material by the Building Information Foundation RTS.



The UKCA mark is a confirmation by Amtico that our products meet the UK Regulations as defined in the relevant Statutory Instruments (SIs).



The CE mark is a confirmation by Amtico that our products are in compliance with European health, safety and environmental requirements (as required by Council Directive 89/106/EEC and detailed in EN 14041).



Amtico products comply with BSI ISO 14001 environmental standards.

Samples and support

We offer expert support worldwide with a free online global supply service for samples. Full size samples are available from your Area Sales Manager.

For full collection details visit [amtico.com](https://www.amtico.com)

**Amtico UK
& European Sales**

+44 (0) 121 745 0800
samples@amtico.com

Amtico Head Office

+44 (0) 24 7686 1400
samples@amtico.com

**Amtico International
Germany**

+49 (0) 2131 359 16 0
info@amtico.de

**Amtico International
France**

+33 (0) 1 55 38 95 70
info@amtico.fr

**Amtico International
Scandinavia**

+46 (0) 8 584 233 24
info@amtico.se

**Amtico International
Australia & New Zealand**

+61 (0) 4777 08418
australia.orders@amtico.com

**Amtico International
Asia**

+852 2327 7703
samples@amtico.com

**Amtico International
Middle East, Africa & India**

+971 (0) 50 192 33 46
samples@amtico.com

amtico.com

amtico
flooring