



**Production
Park**

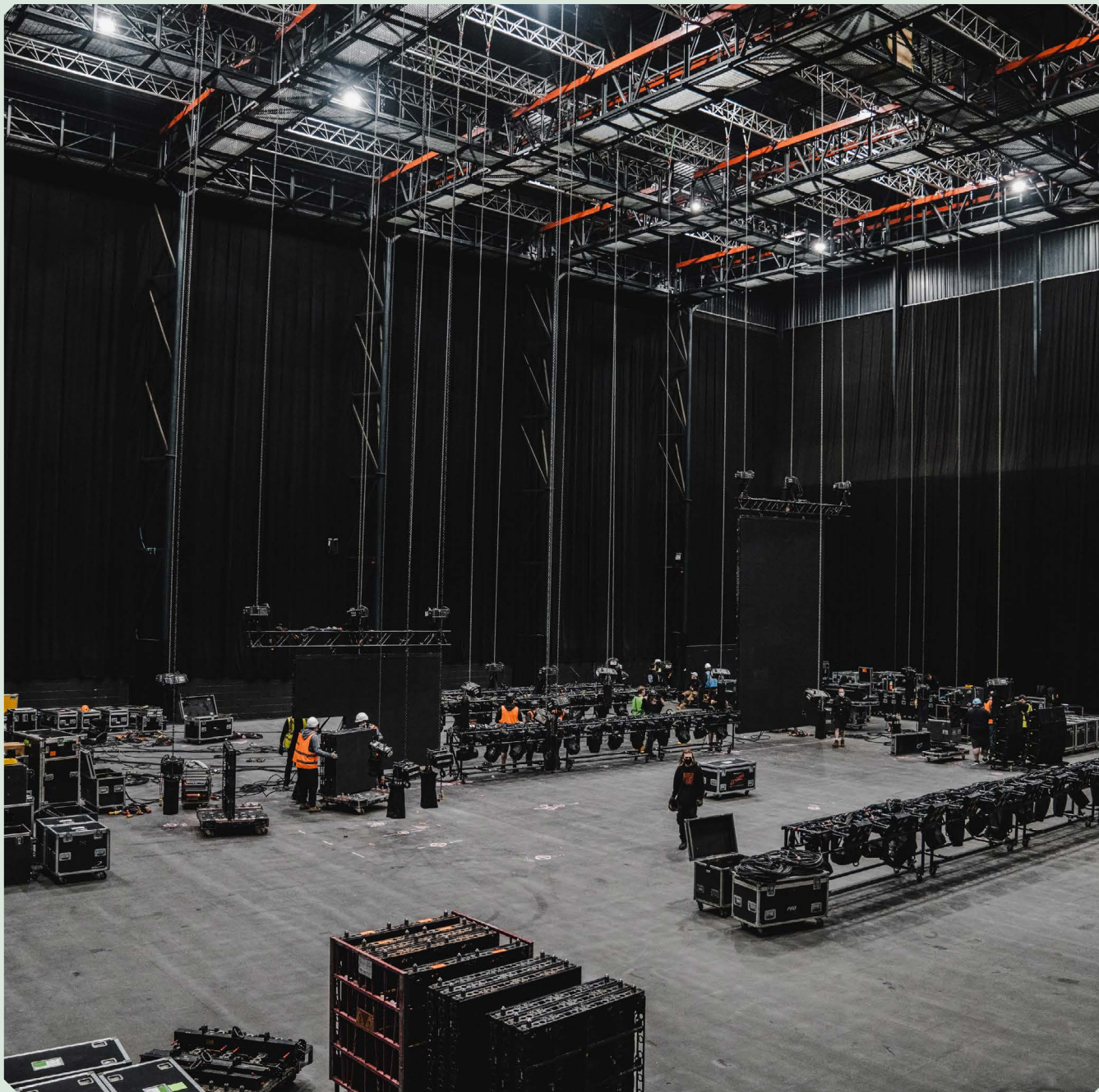
Tech Pack

Studio

0001

Production Park,
South Kirkby,
West Yorkshire
WF9 3NR

studios@productionpark.co.uk
+44 (0)1977 659850
productionpark.co.uk



Studio

001

2

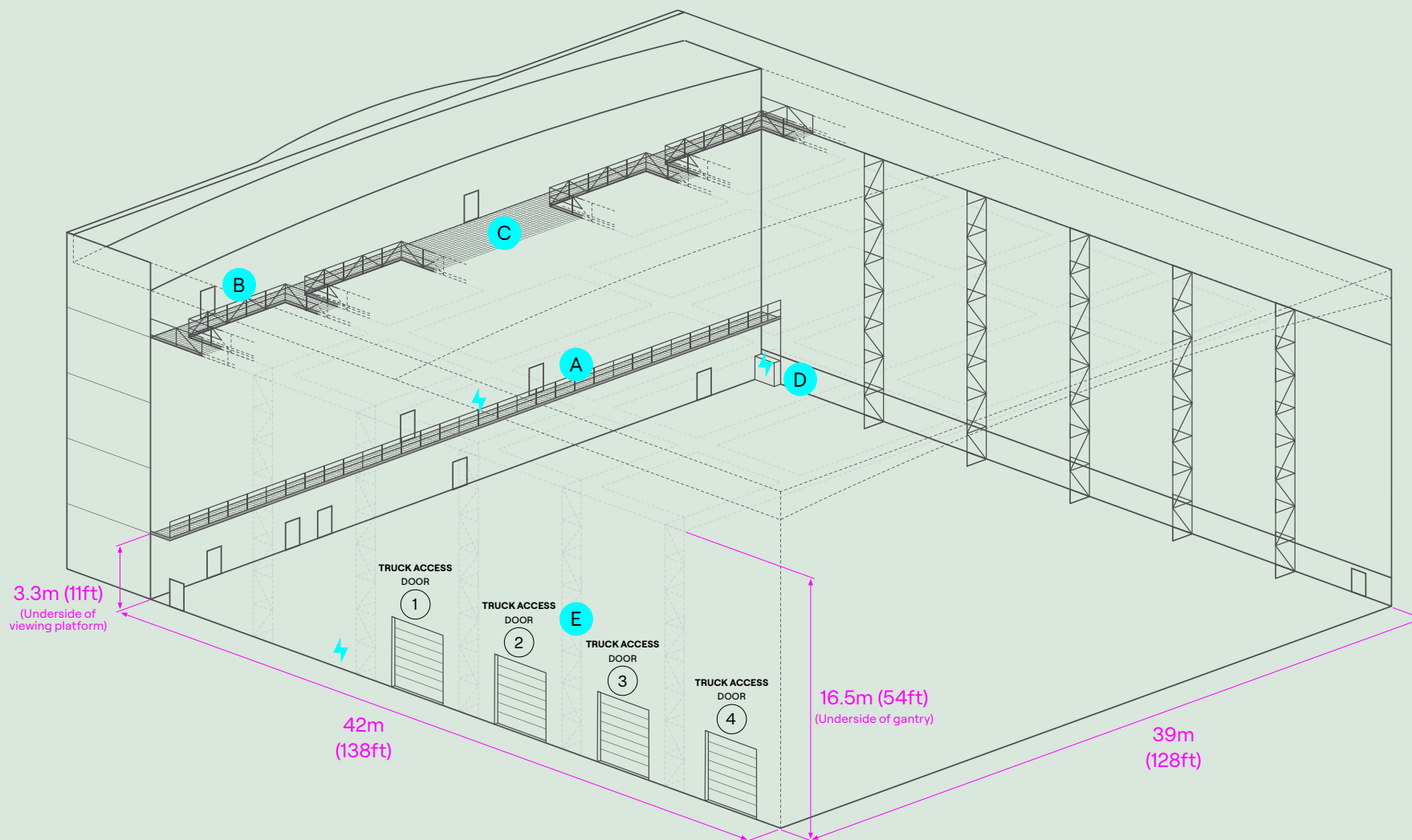


Studio 001 was the first purpose-built production rehearsal facility in Europe. It's where some of the world's biggest artists, brands and shows come to rehearse, film and create. Our expert team work with you to shape your vision, supporting in all areas from planning to design, set up and management.

Area:	1,641 sq m (17,664 sq ft)
Length:	42m (138ft)
Width:	39m (128ft)
Height:	16.5m (54ft) to underside of gantry 18.2m (60ft) rigging beam height 19.8m (65ft) maximum working height Gantry: 5 gantries - 75 Tonne capacity (15T per gantry)
Power:	1200A 3-phase 2 x 400A powerlock 4 x 125A 3 x 63A 3 x 32A 16A (single phase)
Capacity:	400 people

Production Park,
South Kirkby,
West Yorkshire
WF9 3NR

studios@productionpark.co.uk
+44 (0)1977 659850
productionpark.co.uk



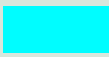



- A Studio Balcony**
2 x 32A 3-phase
2 x 16A single
- B Gantry Entry Door**
- C Gantry**
See page 04
- D Main Power Distribution**
1200A 3-phase (Non-RCD)
2 x 400A powerlock outlets
4 x 125A 3-phase
3 x 63A 3-phase
3 x 32A 3-phase
- E Truck Access**
4 x electronically operated, vertically opening loading access doors.
4.5m (14.9ft) wide x 6m (19.8ft) tall
1 x 32A 3-phase

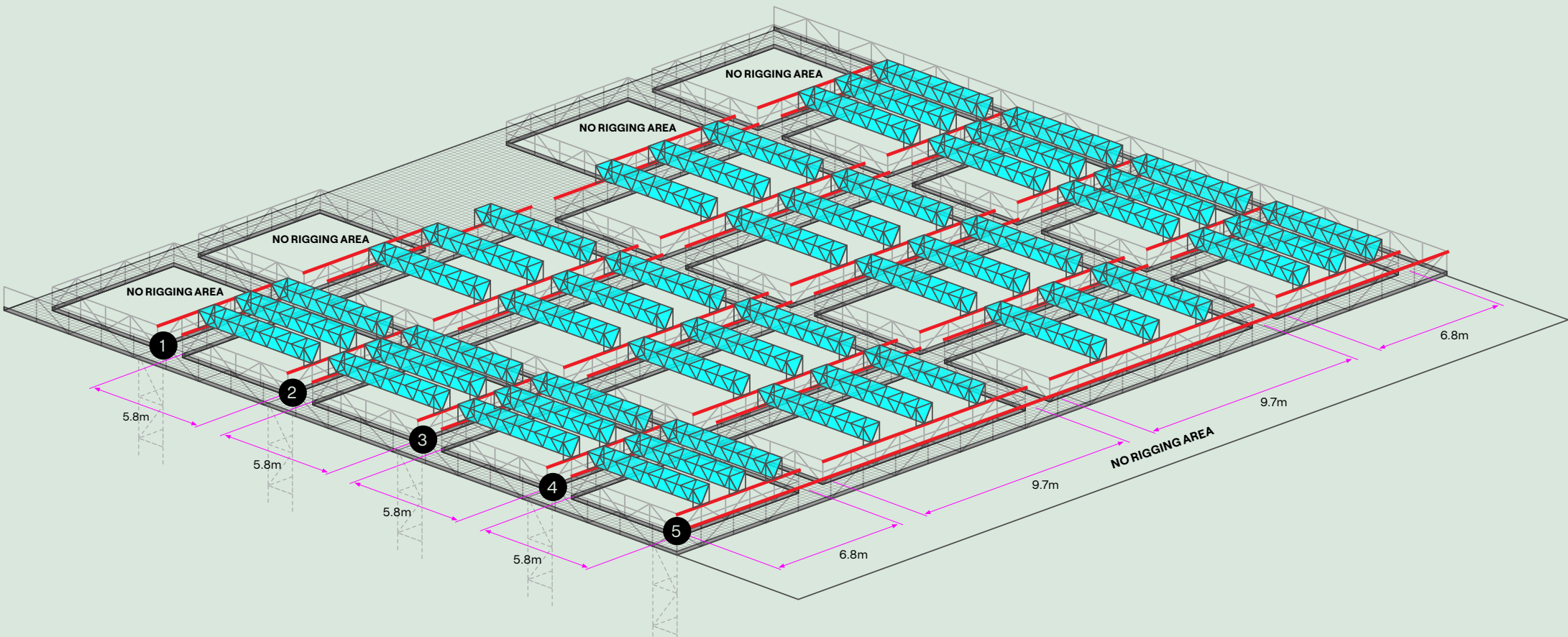
Rigging and Suspension

Covering the entire area of the Studio 001 roof, with full view of the arena below, the gantry comprises a platform of walkways offering riggers easy access to the roof beams, which slide in and out over the mother grid.

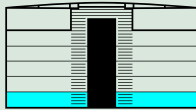
The gantry is also a good bird's eye vantage point for filming action in the Studio.

- Walkable gantry
- 16.5m (54ft) to the underside of the grid
- 18.2m (60ft) rigging beam height
- 75T UDL (15 Tonne per gantry, 7.5T per column leg)
- Movable spreaders for flexible rigging points

	Movable spreaders
	Rigging beams
	Walkway/gantry
	Gantries 1-5



G



Ground Floor:

Offering direct access to the arena, the ground floor of Studio 001 has fully-air conditioned production offices with work stations, power supplies, and telephone/ internet ports with free Wi-Fi. A large catering facility to seat 30 people is fully equipped for incoming caterers.

1. Catering:

12.5m (41 ft) x 7.0m (23ft)
8 x 13A sockets / 2 x 32A 3-phase
2 x 32A single / 3 x 16A single
Large extraction hood
1 Double sink
Tables and chairs to seat 30 people
Air conditioning
2. Male W/C:

3 x Toilets / 2 x Urinals / 4 x Sinks
3. Disabled W/C:

Toilet / Sink
4. Female W/C:

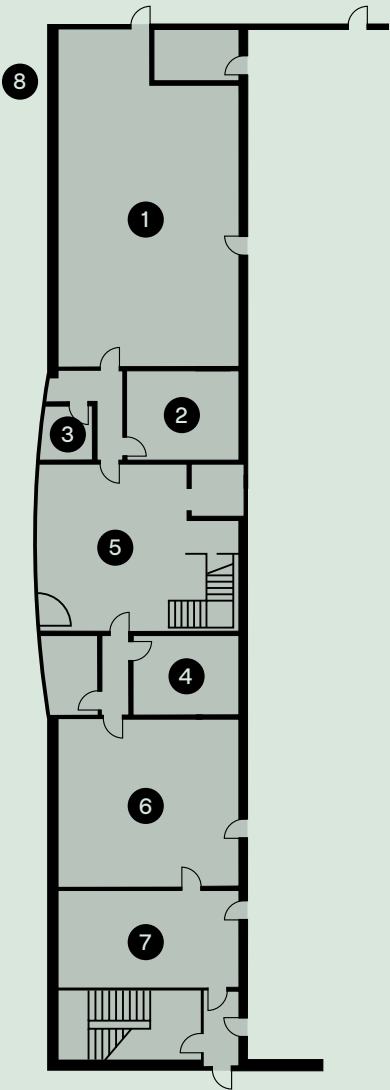
3 x Toilets / 2 x Sinks
5. Foyer:

6.5m (21 ft) x 5.7m (19ft)
6. Production Office 1:

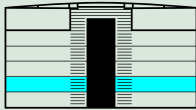
7.0m (23ft) x 5.4m (18ft)
13A sockets
Hardline internet ports
Air conditioning
7. Production Office 2:

7.0m (23ft) x 3.5m (18ft)
13A sockets
Hardline internet ports
Air conditioning
8. External Power:

Distribution for Bus/Truck
1 x 32A 3-phase / 2 x 16A single



1st



1st Floor:

Our six dressing rooms each have en-suite bathrooms, air conditioning, furniture and telephone/internet ports. You'll find a laundry room on the first floor, which is adjacent to the arena viewing platform, which can also be used for filming/front of house mix positions.

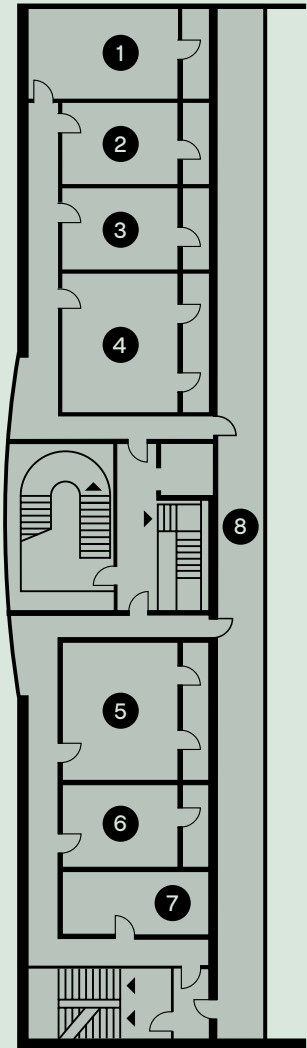
1. Dressing Rooms:

01 – 6m (20ft) x 3.2m (10.5ft)
02 – 5.5 (18ft) x 3.1m (10ft)
03 – 5.4m (17.8ft) x 3.1m (10ft)
04 – 5.0m (16.4ft) x 5.4m (17.8ft)
05 – 5.1m (16.8ft) x 5.4m (17.8ft)
06 – 5.3m (17.4ft) x 3.2m (10.5ft)
- Dressing Rooms Include:

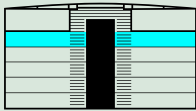
En-suite bathrooms
Telephone/internet ports
13A sockets
Air conditioning
Settees
Chairs
Desk
7. Laundry:

5.5m (18ft) x 2.2m (7ft)
Washing machine/Dryer
Iron + ironing boards
8. Studio Balcony:

42m (137.9ft) x 2m (6.6ft)
4 x 16A single
1 x 32A 3-phase
Also ideal for filming and front of house mix positions

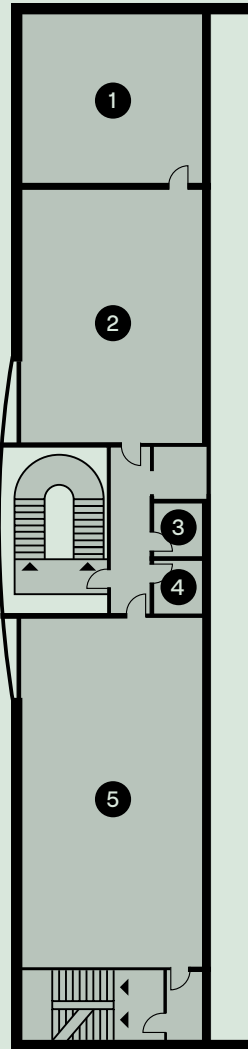


4th



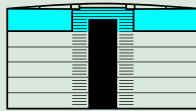
4th Floor:

There's plenty to do with your free time in Studio 001; the fourth floor is equipped with a cinema and green room complete with ping pong table, bar and 3x2m projection screen. There's also a large dance studio featuring a Marley floor and mirrored wall.



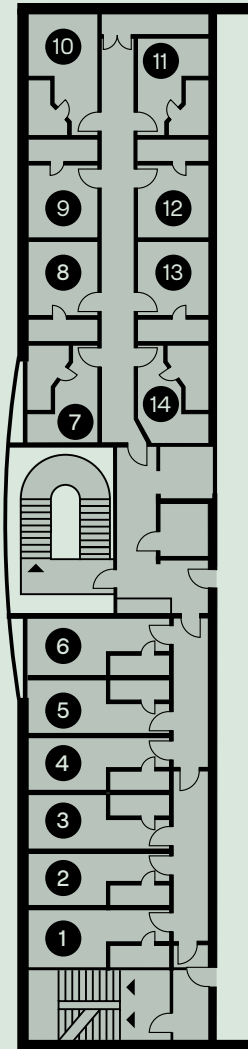
- | | |
|---------------------|---|
| 1. Cinema Room: | 6.4m (21ft) x 6.9m (22.5ft)
3x2m projection screen
7.1 surround sound system
Plug and play capacity |
| 2. Green Room: | 9.6m (31.5ft) x 6.9m (22.5ft)
Mexican themed bar
Ping pong table
Table football
Hand-painted scenic wall
Adjoining cinema room |
| 3. Male Female W/C: | Toilet/sink |
| 4. Female W/C: | Toilet/sink |
| 5. Dance Studio: | 13m (42.5ft) x 6.7m (22ft)
12m long x 2.5m high mirrored wall
Marley floor
Air conditioning
1 x 32 Amp 3-phase |

5th

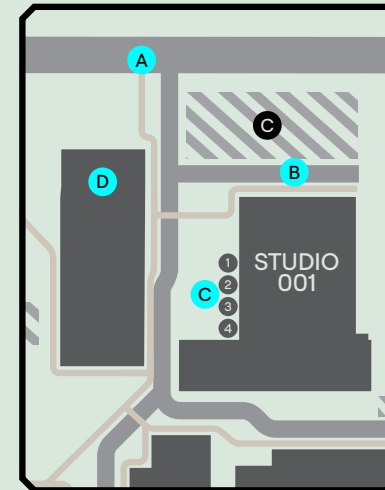
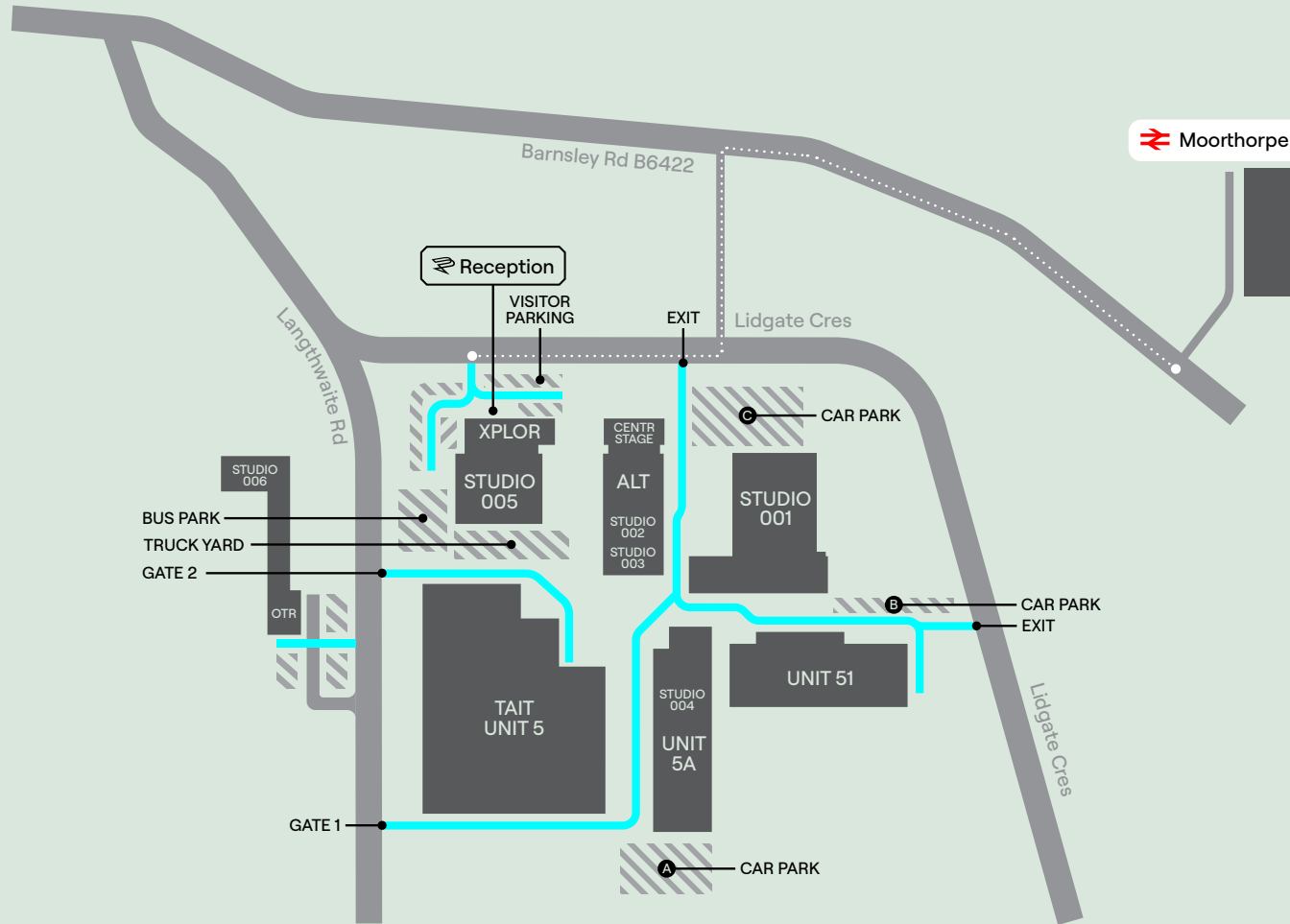


5th Floor:

Tucked away at the top of the building is the Studio 001 Hotel. Guests can save time and money by booking in to one of our 13 single rooms or special double room, which are all en-suite, fully air conditioned, and include TV, electric windows and blinds.



- | | |
|--------------------|---|
| 1. Hotel room 01: | Single Bedroom – 5.2m (17ft) x 2.1m (7ft) |
| 2. Hotel room 02: | Single Bedroom – 5.2m (17ft) x 2.1m (7ft) |
| 3. Hotel room 03: | Single Bedroom – 5.2m (17ft) x 2.1m (7ft) |
| 4. Hotel room 04: | Single Bedroom – 5.2m (17ft) x 2.1m (7ft) |
| 5. Hotel room 05: | Single Bedroom – 5.2m (17ft) x 2.1m (7ft) |
| 6. Hotel room 06: | Single Bedroom – 5.2m (17ft) x 2.1m (7ft) |
| 7. Hotel room 07: | Single Bedroom – 3.5m (11.5ft) x 2.7m (9ft) |
| 8. Hotel room 08: | Single Bedroom – 3.5m (11.5ft) x 2.7m (9ft) |
| 9. Hotel room 09: | Single Bedroom – 3.5m (11.5ft) x 2.7m (9ft) |
| 10. Hotel room 10: | Double Bedroom – 4.8m (15.5ft) x 2.7m (9ft) |
| 11. Hotel room 11: | Single Bedroom – 3.8m (12.5ft) x 2.7m (9ft) |
| 12. Hotel room 12: | Single Bedroom – 3.8m (12.5ft) x 2.7m (9ft) |
| 13. Hotel room 13: | Single Bedroom – 3.8m (12.5ft) x 2.7m (9ft) |
| 14. Hotel room 14: | Single Bedroom – 3.8m (12.5ft) x 2.7m (9ft) |



Map Key – Studio 001

- A Pedestrian Gate
- B Main entrance
- C Load in doors 1-4
- D Centr Stage
- C Studio Car Park

Production Park,
South Kirkby,
West Yorkshire
WF9 3NR

studios@productionpark.co.uk
+44 (0)1977 659850
productionpark.co.uk



More Studios

Studio
002/003

Black box space in the centre of the park used for green screen projects, break out, rehearsals and filming.

Area:	314.5 sq m (1030 sq ft)
Width:	18.5m (60.9ft)
Length:	17m (55.7ft)
Height:	Max trim 7.7m (25ft) Max clearance 9m (29ft)
Power:	4 x 63A 3-phase 4 x 32A 3-phase
Capacity:	500 combined



Studio
004

Centre for Virtual Production.
XR studio with LED video wall by ROE Visual, Unreal Engine environments and Disguise media servers.

Area:	627.15 sq m (2057 sq ft)
Width:	18.5m (60.9ft)
Length:	33.9m (111ft)
Height:	Max trim 7.7m (25ft) Max clearance 9m (29ft)
Power:	4 x 63A 3-phase 4 x 32A 3-phase
Capacity:	50
Other	LED virtual Production Stage featuring ROE ruby 2.3mm



Studio
005

The new flagship space sits within XPLOR, a research and innovation hub dedicated to evolving creative industries.

Area:	1,317 sq m (14,175 sq ft)
Width:	32m (105ft)
Length:	41m (135ft)
Height:	22m (72ft) Roof height 20.2m (66ft) Rigging beam height 18m (60ft) To underside of gantry
Power:	2 x 630A 3-phase distribution boards 1 x 400A 3-phase distribution board
Capacity:	500



Studio
006

Studio 006 boasts private access and is ideal for large band rehearsals, smaller productions, training and project R&D and realisation.

Area:	338 sq m (3638 sq ft)
Width:	13.05m (42.81ft)
Length:	26m (85.3ft)
Height:	Max 6m (19.68ft)
Power:	2 x 63A 3-phase 1 x 32A 3-phase
Capacity:	100

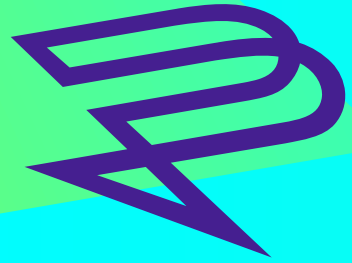


The
Mill

The Mill London is a Versatile space in Wimbledon for rehearsals, concerts, events, filming and photoshoots.

Area:	429 sq m (4618 sq ft)
Width:	12m (40.2ft)
Length:	33m (108ft)
Height:	6m (19.68ft)
Power:	300A 3-powerlock 1 x 125A 3-phase 1 x 63A 3-phase 2 x 32A 3-phase
Capacity:	300





Production Park

Production Park,
South Kirkby,
West Yorkshire
WF9 3NR

studios@productionpark.co.uk
+44 (0)1977 659850
productionpark.co.uk