



**Production
Park**

Tech Pack

The Mill

The Mill,
27 Rosemary Road,
Garratt Business Park,
London SW17 0FU

studios@productionpark.co.uk
+44 (0)1977 659850
productionpark.co.uk



The Mill



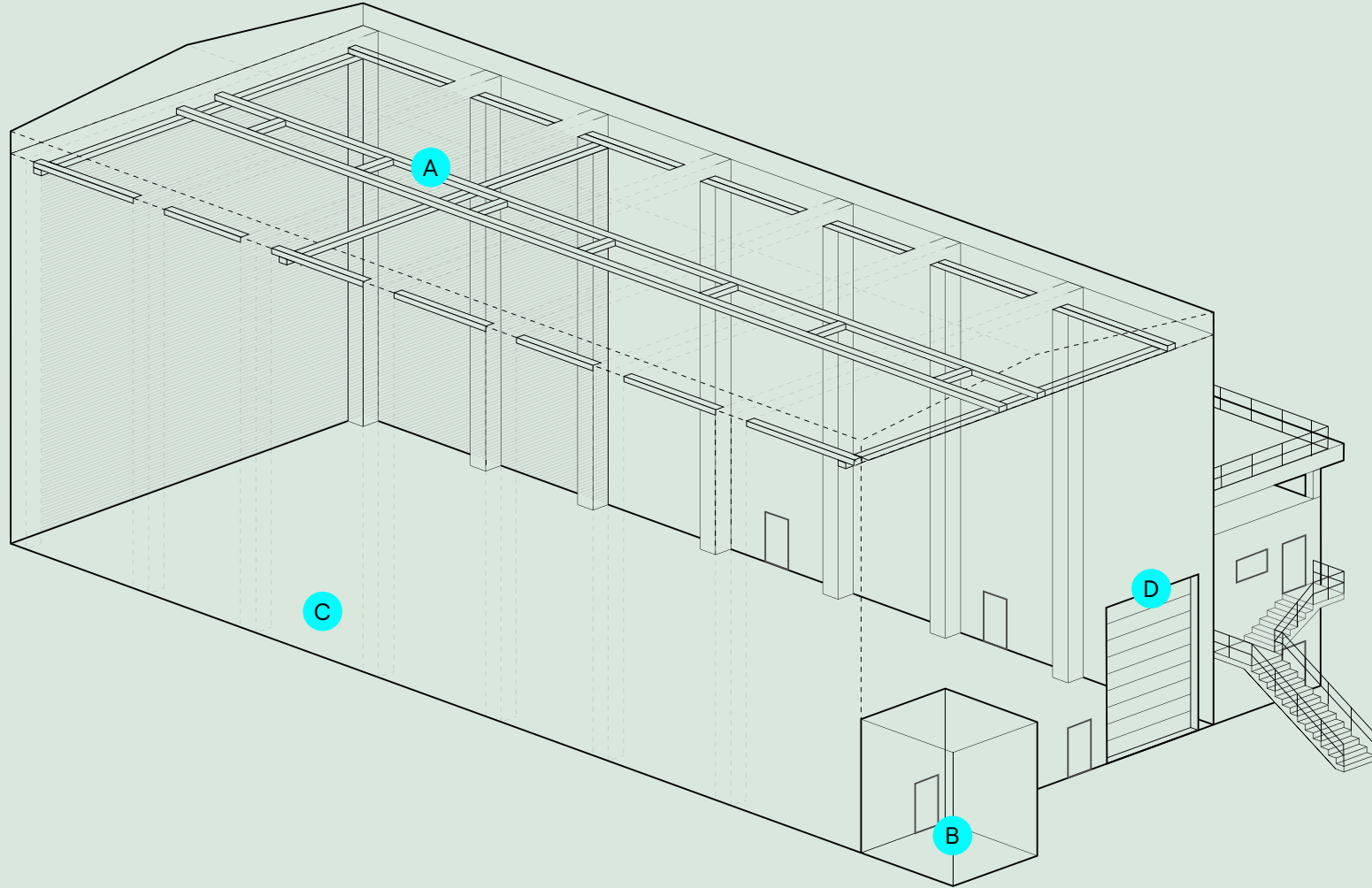
2

The Mill is located in Wimbledon, London and is a versatile space with complete privacy and a homely feel. Since its inception in 2017, the studio has hosted band and production rehearsals, music concerts, theatre production rehearsals, corporate events and film and television shoots.

Area:	429 sq m / 4,618 sq ft
Length:	33m / 108ft
Width:	12m / 40.2ft
Height:	6.4m / 21ft trim height
Power:	300 Amp powerlock connection 3 x 32amp 3-phase CEEform 1 x 63amp 3-phase CEEform 1 x 125amp 3-phase CEEform Tour Bus Shore power available Wi-Fi and 13A sockets throughout the building External 32A 3-phase CEEform power available
Roof capacity:	Multiple movable truss spreaders on top of house steel beams. 12T UDL max load with 1T point load. 48mm Scaffolding lighting grids available to specification.
Capacity:	400

The Mill,
27 Rosemary Road,
Garratt Business Park,
London SW17 0FU

studios@productionpark.co.uk
+44 (0)1977 659850
productionpark.co.uk



A

Studio Rigging

Multiple movable truss spreaders on top of house steel beams.

12 Tonne UDL max load with 1T point load

B

Audio Room

C

Main Power Distribution

1200A 3-phase (Non-RCD)

2 x 400A powerlock outlets

4 x 125A 3-phase

3 x 63A 3-phase

3 x 32A 3-phase

D

Truck Access

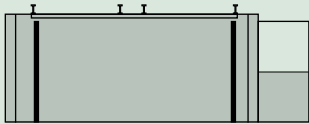
One electronically operated, vertically opening loading access door.

4.5m (14.9ft) wide x 6m (19.8ft) tall

1 x 32A 3-phase

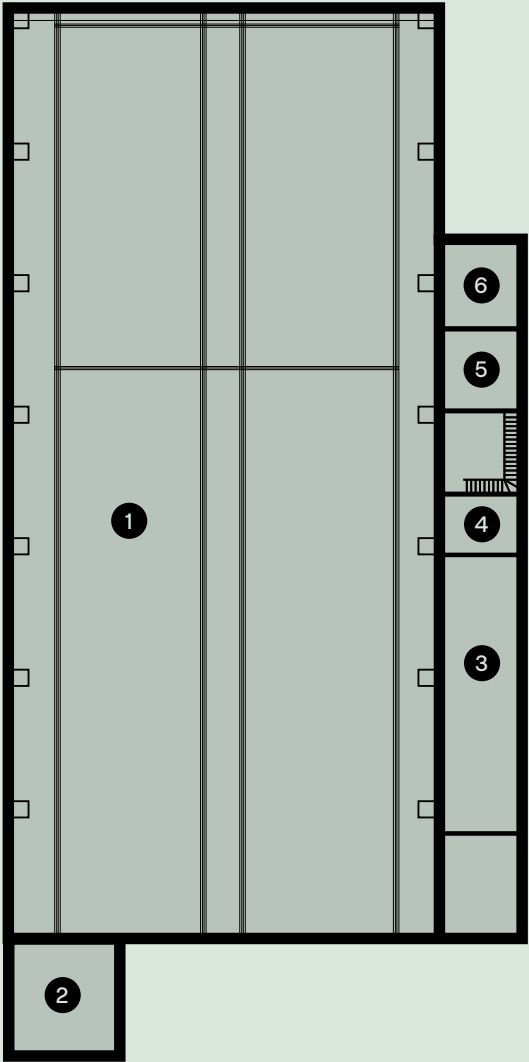
Floor Plans

G



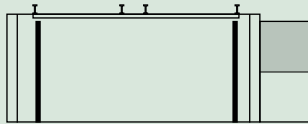
Ground Floor:

Where the magic happens. Boasting a large shared production office with a kitchenette and toilet facilities outside of the main space. The ground floor is accessed via the large truck sized shutter door or the stage door. The ground floor is where you will find our studio team who will be on hand to facilitate your needs and queries.



- 1. Main Studio:** 33m x 12m x 6.4m (429m²)
Fully black draped on all sides with
400A 3-phase Powerlock
125A 3-phase CEEform
63A 3-phase CEEform
2 x 32A 3-phase CEEform
- 2. Control Room:** 3.6m x 3.3m
32A-3 phase CEEform
13A power
Audio treatment & video link to main studio
- 3. Production Office 1:** 9.5m x 3m x 2.5m
Hardline internet
6 desks w/chairs and conference table w/ 4 chairs
Fridge
56" monitor
- 4. Kitchen:** 3m x 2.1m
Fridge/freezer, microwave, toaster, kettle, 20L hot water run, coffee machine, dishwasher, sink, soup kettle and kitchenware
- 5. Male W/C:** 1 x toilet / 1 x urinal / 1 x sink
- 6. Female W/C:** 2 x toilet / 2 x sink

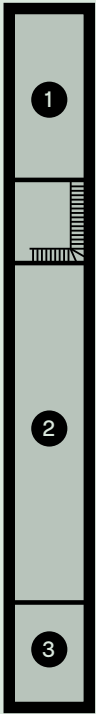
1st



1st Floor:

Accessed via an internal or external staircase, the 1st floor is a great place to chill out and relax between rehearsals. The private dressing room can be reserved for the talent with a private shower and toilet, as well as a private external area. The second production office can also double as a catering serving space.

- 1. Dressing Room:** 4m x 3m
Private bathroom w/ 1 x toilet, 1 x shower, 1 x sink
1 x clothing rail
1 x desk w/ makeup mirror
Access to private balcony
- 2. Green Room:** 12m x 3m
Dining table w/ 4 chairs, 3 x double sofas, TV, Table football
1 x clothing rail
- 3. Production Office 2:** 4m x 3m
Hardline internet, 2 x office desks w/ chairs, 1 x single lounge chair, 1 x clothing rail.
External access is also possible via an outside staircase from the car park



Price on request for the services below

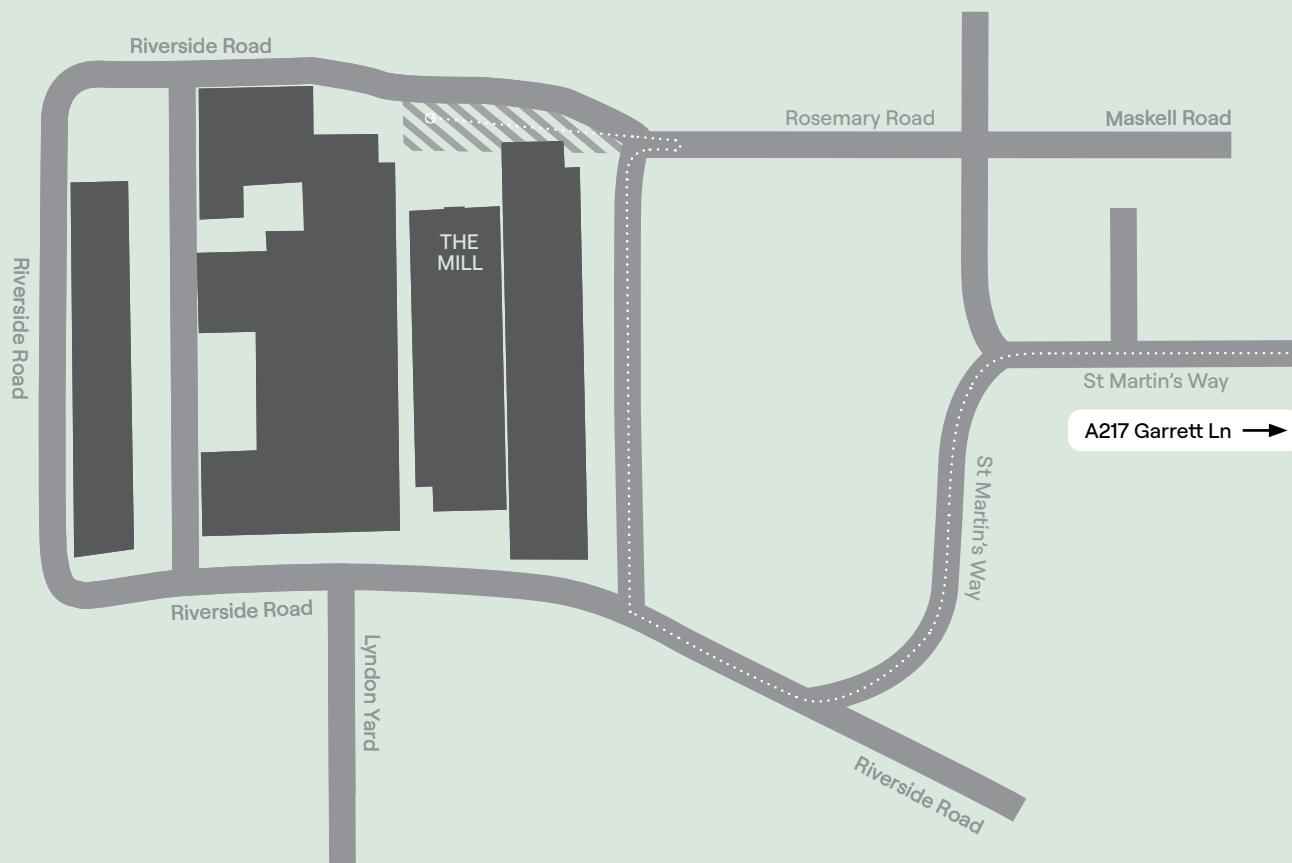
Unrivalled Wraparound Services

Through our on-site family, unrivalled local knowledge across the north and south, and black book of vendors, we can provide a multitude of services including, but not limited to;

Services Include

- Stage and set design
- Tour and event catering
- Private chef catering
- Local crew
- Event and runner vehicle hire
- Rigging equipment hire
- AV rental
- Event equipment hire
- Additive manufacturing (3D printing)
- Scenic workshops
- Set carpentry
- Freight and truck solutions
- Short courses and bespoke training programmes
- Backline rental
- Bespoke LED systems
- Electrical services
- SFX rental
- Soft goods and drapery
- 24 hour operation available on request (Additional charges may apply)





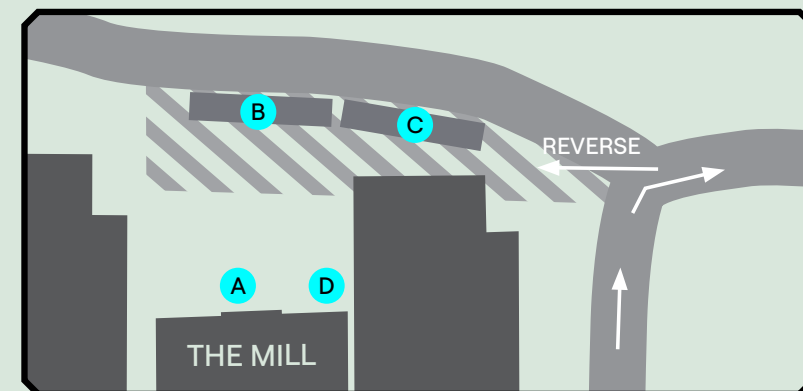
Map Key – The Mill

- A Load in
- B Truck/Bus 1
- C Truck/Bus 2
- D 32/3 CEE Form Supply

Car park with capacity for 12 cars, 2 x 45' trucks or buses

IMPORTANT NOTE FOR TRUCKS:
PLEASE FOLLOW THE WHITE DOTTED ROUTE ONLY.

TRUCKS WILL NOT MAKE THE TURN INTO THE
ALTERNATIVE GATE OPPOSITE MASKELL ROAD.



The Mill,
27 Rosemary Road,
Garratt Business Park,
London SW17 0FU

studios@productionpark.co.uk
+44 (0)1977 659850
productionpark.co.uk

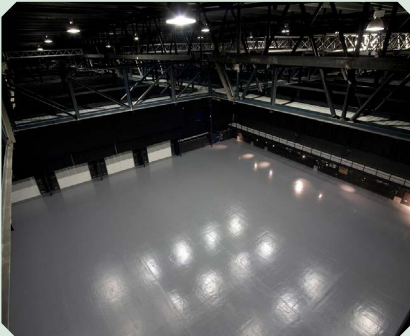


More Studios

Studio 001

Studio 001 was the first purpose –built production rehearsal facility in Europe. It’s where some of the world’s biggest artists, brands and shows come to rehearse, film and create.

Area:	1,641 sq m (17,664 sq ft)
Width:	39m (128ft)
Length:	42m (138ft)
Height:	16.5m (54ft) underside of gantry 18.2m (60ft) rigging beam height 19.8m (65ft) maximum working height
Power:	1200A 3-phase 2 x 400A powerlock 4 x 125A 3 x 63A 3 x 32A 16A (single phase)
Capacity:	400



Studio 002/003

Black box space in the centre of the park used for green screen projects, break out, rehearsals and filming.

Area:	314.5 sq m (1030 sq ft)
Width:	18.5m (60.9ft)
Length:	17m (55.7ft)
Height:	Max trim 7.7m (25ft) Max clearance 9m (29ft)
Power:	4 x 63A 3-phase 4 x 32A 3-phase
Capacity:	50



Studio 004

Centre for Virtual Production.
XR studio with LED video wall by ROE Visual, Unreal Engine environments and Disguise media servers.

Area:	627.15 sq m (2057 sq ft)
Width:	18.5m (60.9ft)
Length:	33.9m (111ft)
Height:	Max trim 7.7m (25ft) Max clearance 9m (29ft)
Power:	4 x 63A 3-phase 4 x 32A 3-phase
Capacity:	500 combined
Other	LED virtual Production Stage featuring ROE ruby 2.3mm



Studio 005

The new flagship space sits within XPLORE, a research and innovation hub dedicated to evolving creative industries.

Area:	1,317 sq m (14,175 sq ft)
Width:	32m (105ft)
Length:	41m (135ft)
Height:	22m (72ft) Roof height 20.2m (66ft) Rigging beam height 18m (60ft) To underside of gantry
Power:	2 x 630A 3-phase distribution boards 1 x 400A 3-phase distribution board
Capacity	500

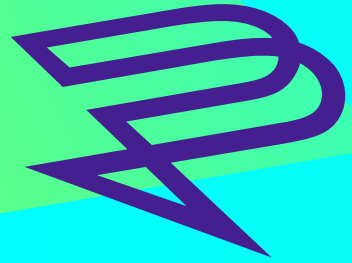


Studio 006

Studio 006 boasts private access and is ideal for large band rehearsals, smaller productions, training and project R&D and realisation.

Area:	338 sq m (3638 sq ft)
Width:	13.05m (42.81ft)
Length:	26m (85.3ft)
Height:	Max 6m (19.68ft)
Power:	2 x 63A 3-phase 1 x 32A 3-phase
Capacity:	100





Production Park

The Mill,
27 Rosemary Road,
Garratt Business Park,
London SW17 0FU

studios@productionpark.co.uk
+44 (0)1977 659850
productionpark.co.uk