



005



Studio

005



2

The new flagship space part of the XPLOr research and innovation hub, Studio 005 will play an integral part in driving the live experience and entertainment industry forward.

The space includes large scale design/prototype spaces, multi-use workshops, pre-visualisation suites and a 1,317 sqm studio with a rigging beam height of 20m.

Area: 1,317 sq m (14,175 sq ft)

Length: 41m (135ft)

Width: 32m (105ft)

Height: 22m (72ft) roof height
20.2m (66ft) rigging beam height
18m (60ft) to underside of gantry

Power & Heating: 3 distribution boards split across the arena carrying 1660A 3-phase power

Full coverage underfloor heating

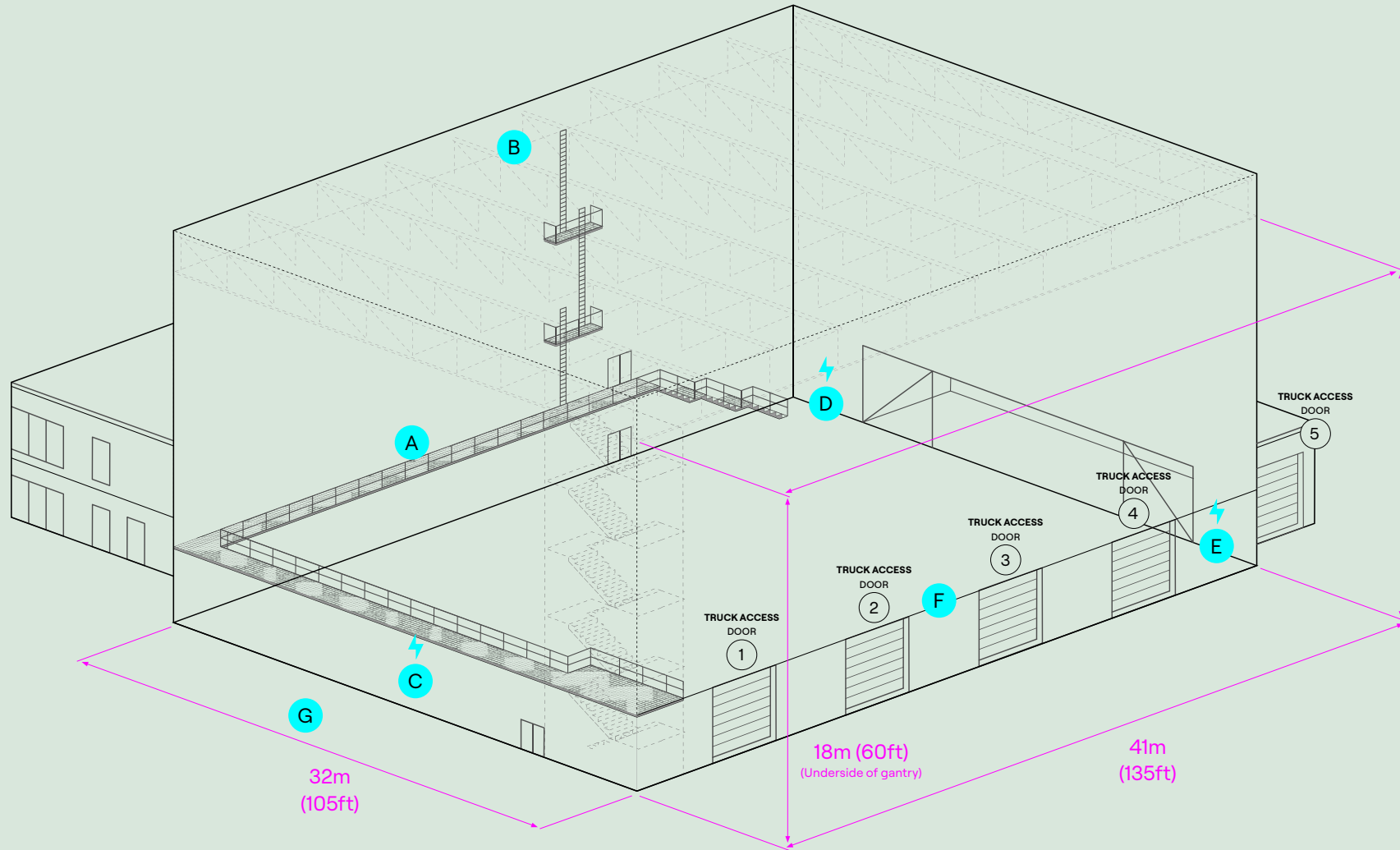
Roof Capacity: Safe Working Load (SWL): 500 Tonne UDL

10 beams with 50T capacity

Power: 4 x 400A 3-phase Powerlock
6 x 125A 3-phase
9 x 63A 3-phase
9 x 32A 3-phase

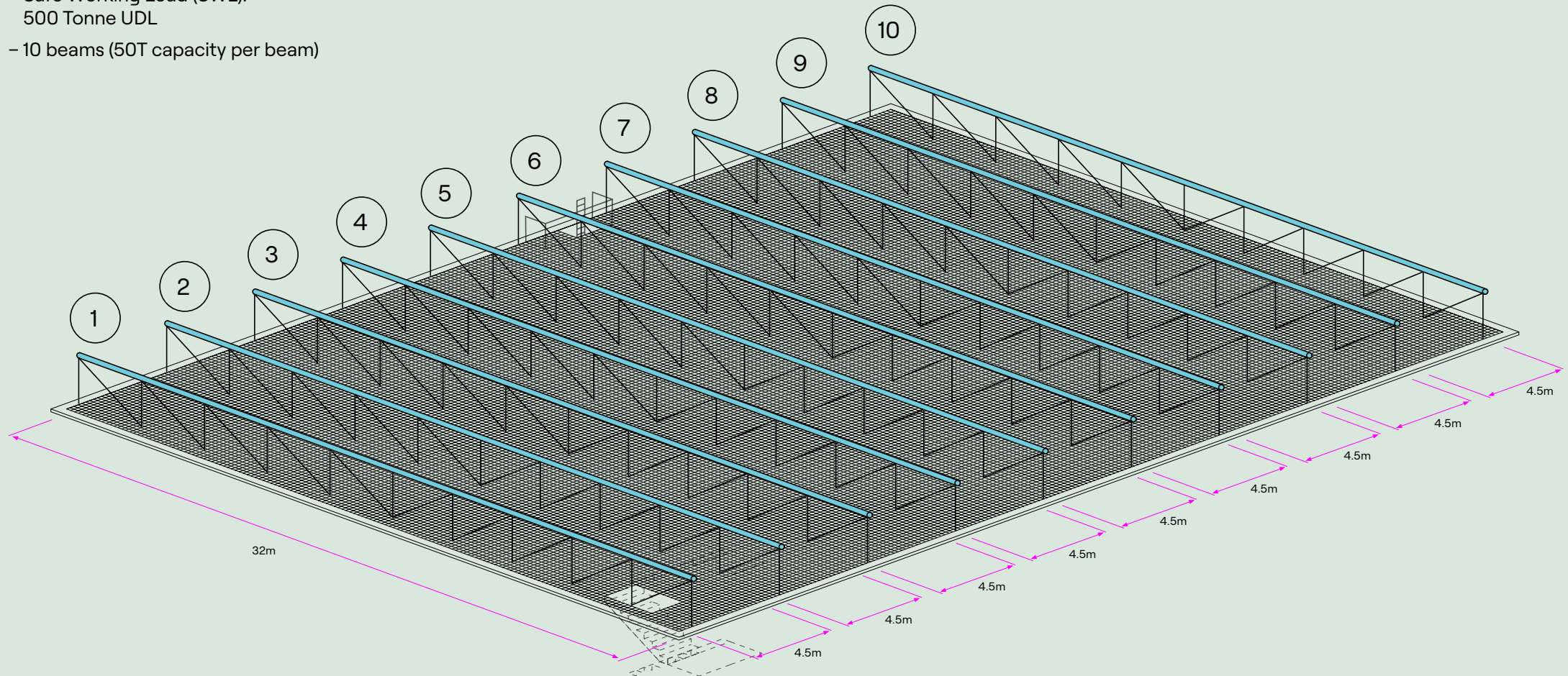
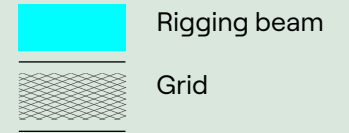
Production Park,
South Kirkby,
West Yorkshire
WF9 3NR

studios@productionpark.co.uk
+44 (0)1977 659850
productionpark.co.uk

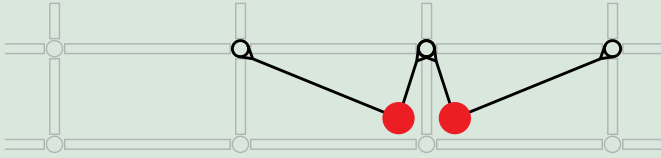


- A Studio Balcony**
- B Roof**
- C Main Power Distribution**
 - 400A 3-phase
 - 2 x 125A
 - 3 x 63A
 - 3 x 32A
- D Each Distro comprises:**
 - 2 x 400A Powerlock
 - 2 x 125A
 - 3 x 63A
 - 3 x 32A
- E Truck Access**
 - 5 x electronically operated, vertically opening loading access doors.
 - 4.5m (14.9ft) wide x 6m (19.8ft) tall
- F Bus Power**
 - Located in bus parking
 - 2 x 32A 3-phase
 - 2 x 16A Single-phase
- G**

- Walkable grid
- 18m (59.5ft) to the underside of the grid
- 20m (65.6ft) Rigging beam height
- Safe Working Load (SWL):
500 Tonne UDL
- 10 beams (50T capacity per beam)



Case A



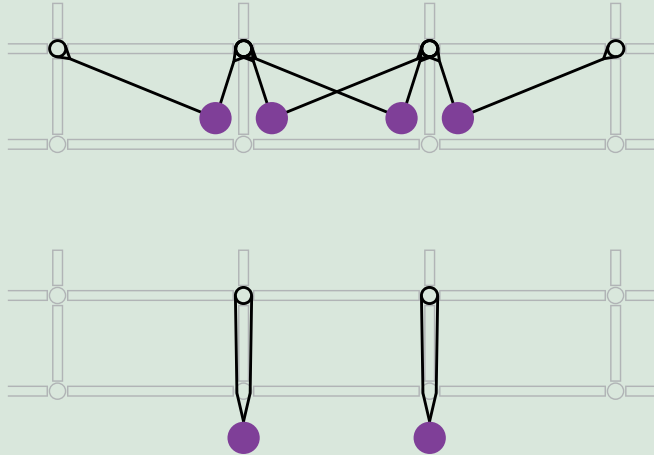
Loading Condition

- 500kn (50 Tonne) - evenly spread along the length of single truss
- E.g. 50 x 10kn (1T) loads (1250mm spacing along the truss) or 25 x 20kn (2T) loads (2500mm spacing along the truss)

Loading Arrangement

- As indicated in red on the rigging loading plan for 50x10kn case

Case B



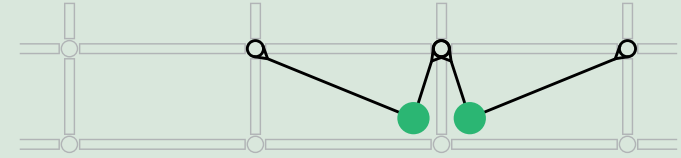
Loading Condition

- 300kn (30T) - loaded at approximately 1/3 points on a single truss
- E.g. 5 x 20kn (2T) loads at 1/3 points

Loading Arrangement

- As indicated in purple on the rigging loading plan

Case C



Loading Condition

- 200kn (20T) - loaded at approximately the mid-point of a single truss
- E.g. 10 x 20kn (2T) loads

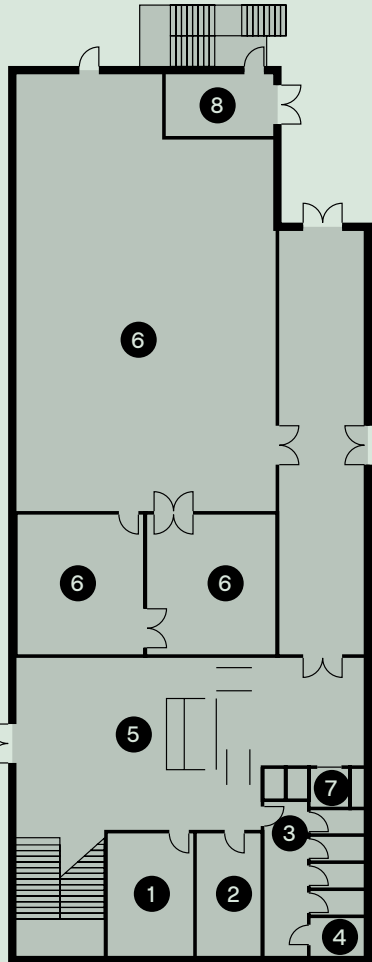
Loading Arrangement

- As indicated in green on the rigging loading plan

G

Ground Floor:

The Ground floor of Studio 005 is primarily the home of Production Park. Our R&D team is located in the Workshop and love to jump in and help out on problem solving should you need them. The bright, airy atrium connects the reception and studio office foyer to the rest of the campus and the bar eatery. Special arrangements can be made for building lock outs.

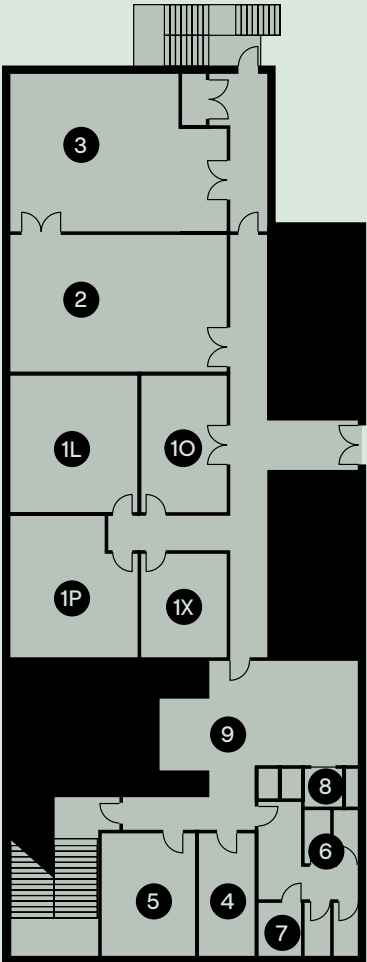


- 1. Studio Office
- 2. Breakout Room & Kitchen
- 3. Toilets
- 4. Disabled W/C
- 5. Reception
- 6. XPLOR
- 7. Lift
- 8. Plant Room

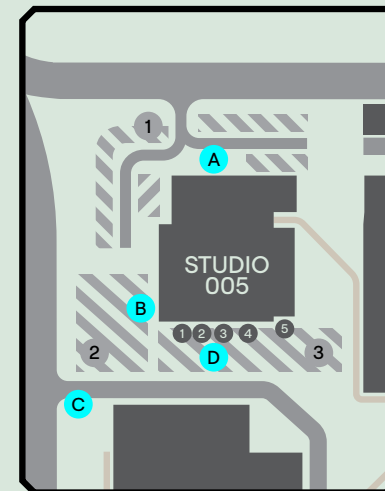
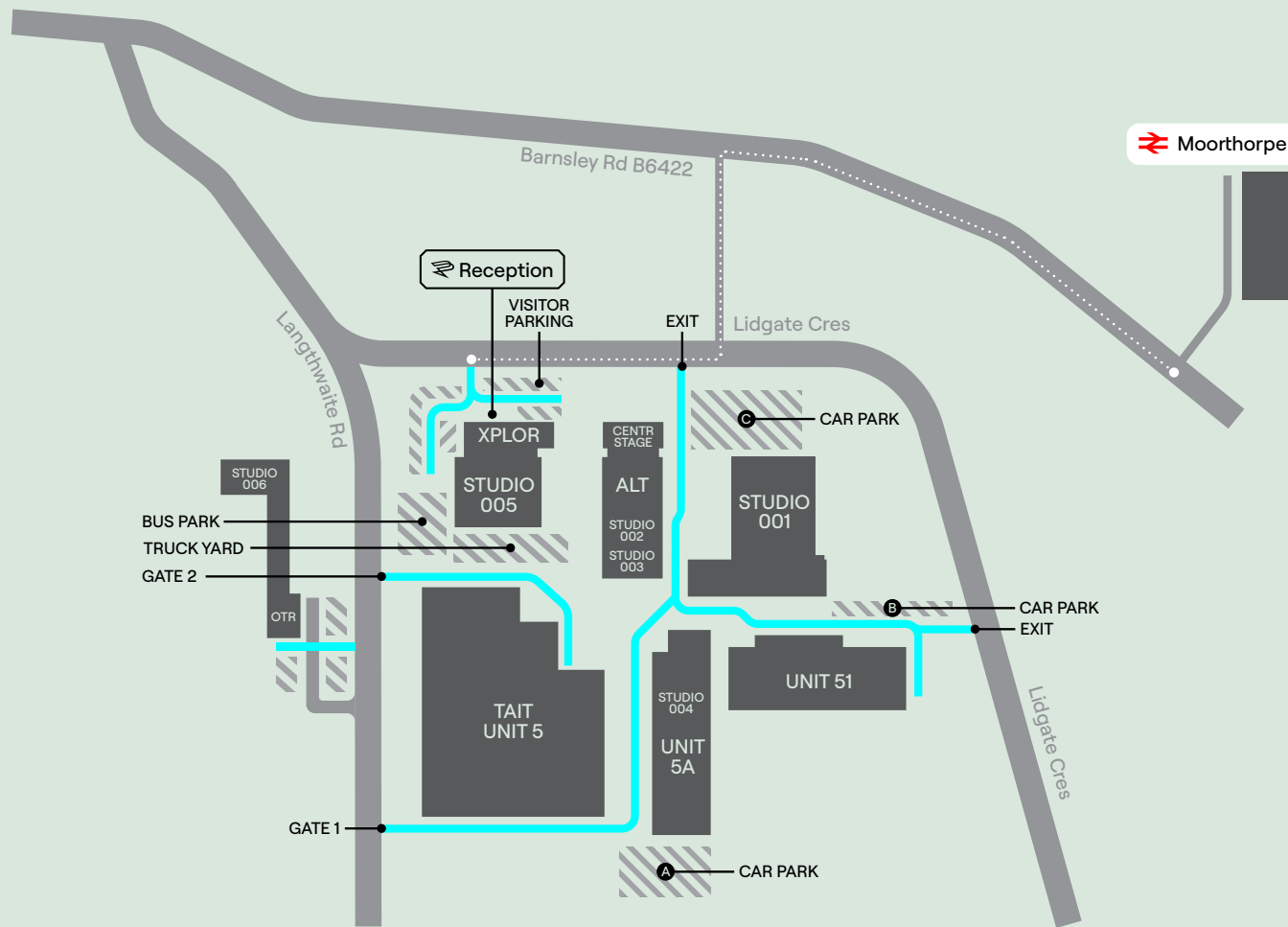
1st

1st Floor:

The first floor is your home from home. With exclusive access for you, the multi-purpose spaces can be configured to suit your needs for production offices, dressing rooms and anything in between. It also has a private toilet and shower block alongside catering facilities and dining space, should you choose to use them in this way.



- 1. Flexible Work Rooms:
 - 1X – 5m (16.4 ft) x 4m (13.12ft).
 - 1P – 6.7m (21.9 ft) x 6.1m (20 ft)
 - 1L – 6.6m (21.65 ft) x 6.1m (20ft)
 - 1O – 6.6m (21.65 ft) x 4m (13.12ft)
- 2. Flexible Work Room/Kitchen
- 3. Flexible Work Room/Dining
- 4. Server Room
- 5. Studio Office
- 6. Toilets
- 7. Disabled W/C & Shower Room
- 8. Lift
- 9. Foyer



Map Key – Studio 005

- A Main Entrance
- B Production Entrance
- C Gate 2
- D Load in Doors 1-5
- 1 Reception Car Park
- 2 Bus Parking
- 3 Truck Yard

Production Park,
South Kirkby,
West Yorkshire
WF9 3NR

studios@productionpark.co.uk
+44 (0)1977 659850
productionpark.co.uk

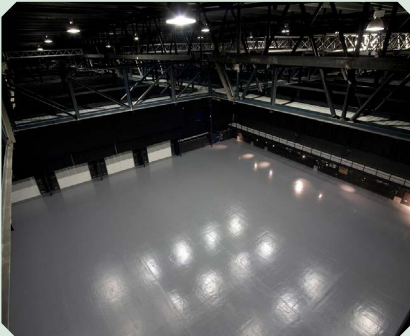


More Studios

Studio 001

Studio 001 was the first purpose-built production rehearsal facility in Europe. It's where some of the world's biggest artists, brands and shows come to rehearse, film and create.

Area:	1,641 sq m (17,664 sq ft)
Width:	39m (128ft)
Length:	42m (138ft)
Height:	16.5m (54ft) underside of gantry 18.2m (60ft) rigging beam height 19.8m (65ft) maximum working height
Power:	1200A 3-phase 2 x 400A powerlock 4 x 125A 3 x 63A 3 x 32A 16A (single phase)
Capacity:	400



Studio 002/003

Black box space in the centre of the park used for green screen projects, break out, rehearsals and filming.

Area:	314.5 sq m (1030 sq ft)
Width:	18.5m (60.9ft)
Length:	17m (55.7ft)
Height:	Max trim 7.7m (25ft) Max clearance 9m (29ft)
Power:	4 x 63A 3-phase 4 x 32A 3-phase
Capacity:	500 combined



Studio 004

Centre for Virtual Production.
XR studio with LED video wall by ROE Visual, Unreal Engine environments and Disguise media servers.

Area:	627.15 sq m (2057 sq ft)
Width:	18.5m (60.9ft)
Length:	33.9m (111ft)
Height:	Max trim 7.7m (25ft) Max clearance 9m (29ft)
Power:	4 x 63A 3-phase 4 x 32A 3-phase
Capacity:	50
Other	LED virtual Production Stage featuring ROE ruby 2.3mm



Studio 006

Studio 006 boasts private access and is ideal for large band rehearsals, smaller productions, training and project R&D and realisation.

Area:	338 sq m (3638 sq ft)
Width:	13.05m (42.81ft)
Length:	26m (85.3ft)
Height:	Max 6m (19.68ft)
Power:	2 x 63A 3-phase 1 x 32A 3-phase
Capacity:	100

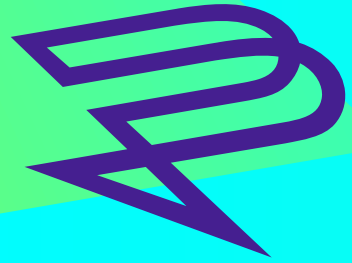


The Mill

The Mill London is a Versatile space in Wimbledon for rehearsals, concerts, events, filming and photoshoots.

Area:	429 sq m (4618 sq ft)
Width:	12m (40.2ft)
Length:	33m (108ft)
Height:	6m (19.68ft)
Power:	300A 3-powerlock 1 x 125A 3-phase 1 x 63A 3-phase 2 x 32A 3-phase
Capacity:	400





Production Park

Production Park,
South Kirkby,
West Yorkshire
WF9 3NR

studios@productionpark.co.uk
+44 (0)1977 659850
productionpark.co.uk