

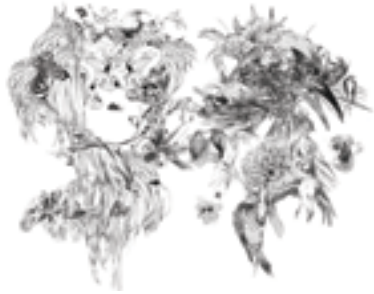
LEEDS
COLLEGE OF
ART

Exhibitions

February 2011 – August 2011

Admission free





Cover image

ChristinaK

Opening Times

Blenheim Walk 10am – 8pm Monday to Friday
Vernon Street 10am – 8pm Monday to Thursday
and 10am – 4pm Fridays

Free entry. Group visits should be arranged with the College.

For more information please contact

exhibitions@leeds-art.ac.uk
0113 202 8000 or 0113 202 8263
www.leeds-art.ac.uk
www.leeds-artexhibitions.co.uk
www.leeds-artexhibitions.blogspot.com

The information given in this booklet was correct at the time of print. However we sometimes have to make changes and if you are planning a visit to a particular exhibition you are advised to contact the College before hand.

LEEDS
COLLEGE OF
ART

Sheila Gaffney

Blenheim Walk
7 March – 1 April



Black Coat ICOM 2.2000, Scannogram, duratrans print, 72 x 52 x 8cm

Others

This work was produced by Sheila Gaffney as artist in residence with Bradford Museums & Galleries during 2007-8 using the costume collection of Cliffe Castle Museum that archives the types of clothing that ordinary people have worn. Not just fine or expensive costumes, but rather nylon dresses from C & A and the hand-knitted woolly hats that you might have stuffed at the back of your wardrobe. 'Others' refers to the people who might have once worn the items of clothing.

Sheila Gaffney is a sculptor. She physically handled the clothes in order to make these illuminated lightbox images - squashing, turning, pressing and lifting garments onto a flatbed scanner to produce the scannograms on display.

Richard Baker

Blenheim Walk
7 March – 1 April



Collection Only

Collection Only is a series of drawings made in direct response to mid 20th Century furniture design. These intimate still life's describe intangible spatialities where seemingly insignificant objects index mythologised, lived, contested, remembered and forgotten human histories. The drawings evoke initial sensations of absence and emptiness before triggering more complex questions of use and exchange values, and voluntary and involuntary memories. These drawings depict coveted objects. Unable to own them, they are acquired by the processes of drawing.

Interim

Vernon Street
9 March – 1 April



Interim is an exhibition open to all current second year BA Fine Art students at British art schools who have previously completed their Foundation Diploma at Leeds College of Art. The show will be selected by artist Peter Liversidge, Ceri Hand from Liverpool's Ceri Hand Gallery and Sean Kaye (Fine Art Co-ordinator, Foundation Diploma, Leeds College of Art).

The Decemberists

Blenheim Walk
4 April – 29 July



The Decemberists are a Portland, Oregon based band led by Colin Meloy, whose music can swing from 1970's hard rock to lush, folk ballads. Since their formation in 2000 The Decemberists have attracted leading graphic designers to produce posters for their performances around the world and this display features a small selection of them, including posters by The Small Stakes, Aesthetic Apparatus, Diana Sudyka, Todd Slater, Leia Bell and others.

ChristinaK

Blenheim Walk
11 April – May 6

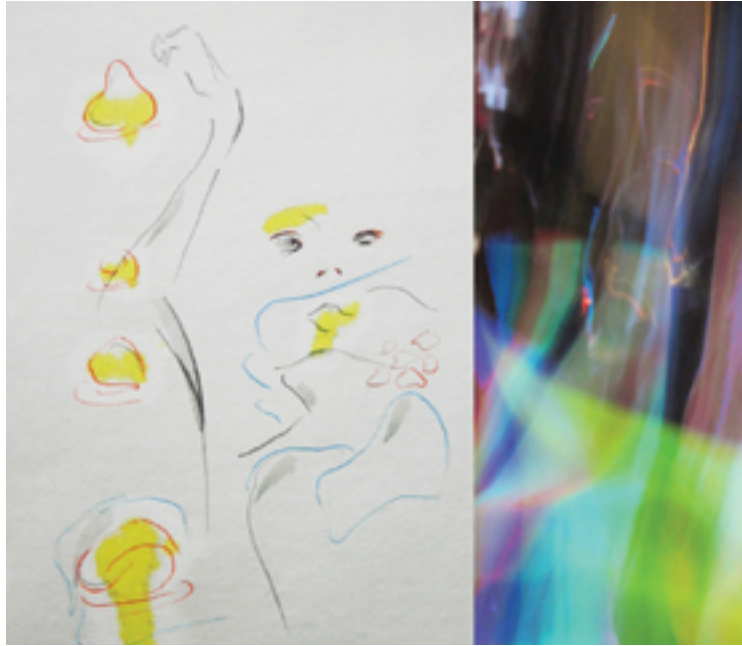


Die For Love

Originally from Greece, ChristinaK (Christina Koutsospyrou) is now based in London and uses both traditional and digital techniques to create striking illustrations with subtle narratives and delicate and ethereal qualities. Her work has been exhibited internationally, is on permanent exhibition at the Cosh Galleries in London and she has worked for a range of agencies, fashion houses and publications including Chanel, Ted Baker, Elle, Glamour, Vogue, Esquire, Ogilvy & Mather, Saatchi & Saatchi, Mother London and Levi's.

Joanna Geldard

Blenheim Walk
11 April – 6 May



Lyrical body

'Children know it and so do nomads. Yet neither nomads nor children write such things down. So I have to invent cumbersome phrases which have little to do with boundless land....

We live our daily lives in a constant exchange with the set of daily appearances surrounding us – often they are very familiar, sometimes they are unexpected and new, but always they confirm us in our lives.

Yet it can happen, suddenly, unexpectedly, and most frequently in the half-light of glimpses, that we catch sight of another visible order which intersects with ours and has nothing to do with it.'

John Berger 1996 *The Russian Way Interstices*,
Opus 21

Dianne Cross

Blenheim Walk
3 May – 10 June



Dianne Cross made contemporary thrown domestic ceramics for many years but now makes individual hand built box and bowl forms and wall pieces. This new work expresses her love of textured surfaces and may be footed, cylindrical, square or rectangular with additions made from clay or found objects. She uses either black or heavily textured clay with dry white or intense blue glazes.

Her work continually evolves - current pieces influencing the next group. She plays with clay, experimenting with ideas for textures, surfaces, additions. Her ideas are generally material led and she is interested in architectural details, African adobe architecture, textiles and sculpture.

Burning Candy

Blenheim Walk

9 May – 3 June



Dots

"London's prolific, ingenious and notorious Burning Candy Crew has long been recognized by their massive murals and cool canvases. Now they are adding filmmaking to their skills and producing an insider's graffiti documentary - required viewing for anyone interested in the worldwide evolution of graffiti" - Martha Cooper

London based Burning Candy have made a name for themselves as being amongst the most prolific and creative street artists in the world. As individuals they are some of the biggest names both on the street and in the contemporary art galleries that exhibit their work. However it is their collaborative work producing epic genre defying murals that has cemented them as an unstoppable powerhouse. Each member of the crew - Sweet Toof; Cyclops; Tek 33; Dscreet; Mighty Mo; Rowdy; Gold Peg; Cept & LL Brainwashed – has created a small screen print to help fund a film, *Dots*, in which each of them visits the spiritual home of their artistic style and the portfolio will be displayed in the Mosaic Café.

Rose Vickers

Blenheim Walk

13 May – 3 June



Bristol based paper-cut artist Rose Vickers trained in applied arts and on graduating worked mainly in three dimensions using wood and stone for large scale public and private commissions. However after making several series of work using light boxes, paper cutting seemed to just emerge as the appropriate technique to carry the pieces forward, and she still feels inspired by the transformative effect that light has on what is essentially a flat object. She says that a paper cut is something which involves not only the elements of drawing but also those of making, requiring a certain kind of discipline, skill and process in it's creation.

Takeshi Murata

Blenheim Walk
16 May – 20 May



Image courtesy Electronic Arts Intermix (EAI) New York

Takeshi Murata was born in Chicago in 1974 and studied film and animation at the Rhode Island School of Design. His extraordinary digital works completely refigure the experience of animation, constantly pushing the boundaries of digitally manipulated psychedelia.

In *Monster Movie* (2005), which will be screened in the Mosaic Café from 10.00am – 4.00pm each day, Murata employs an exacting frame-by-frame technique to turn a bit of B-movie footage (from the 1981 film *Caveman*) into a seething, fragmented morass of colour and shape that decomposes and reconstitutes itself thirty times per second.

Stephen Felmingham

Blenheim Walk
16 May – 4 June



"The work begins in the Cold War bunkers of the Royal Observer Corps in the landscapes of East Anglia, bringing together strands of enquiry that arise in my research, that of a sublime in tension with the everyday; the uncanny; the phenomenology of perception; place and psychoanalysis. This field work proceeds through drawing in situ, drawing from objects retrieved temporarily from the sites and from photographs".

Stephen Felmingham studied MA Drawing at Wimbledon School of Art where he won the Postgraduate Drawing Prize. He was shortlisted for the Jerwood Drawing Prize 2009, the Celeste Prize 2010 in New York and has recently exhibited at the Kulturhuset, Stockholm.

End of Year Shows

Blenheim Walk and Vernon Street
28 May – 2 June and 18 June – 23 June



The annual End of Year Shows are a unique opportunity to go behind the scenes at Leeds College of Art where students will be displaying work throughout both main buildings in open studios and exhibition areas. The Foundation Diploma Show at Vernon Street will take place 28 May - 2 June and all other courses will exhibit at both Vernon Street and Blenheim Walk from the 18 - 23 June. Much of the work in the End of Year Shows will be for sale.

FreeRange 2011

Truman Brewery Building, London
15 – 18 July



The graduating students from BA(Hons) Fine Art take their degree show to London to take part in *FreeRange*, the annual graduate art show at the Truman Brewery Building in Brick Lane. Leeds College of Art supports the final show of the Fine Art student's degree, and the first year of their professional careers, as part of the course culture of engaging with live external events and promoting a professional and outward-looking ethos amongst its students.

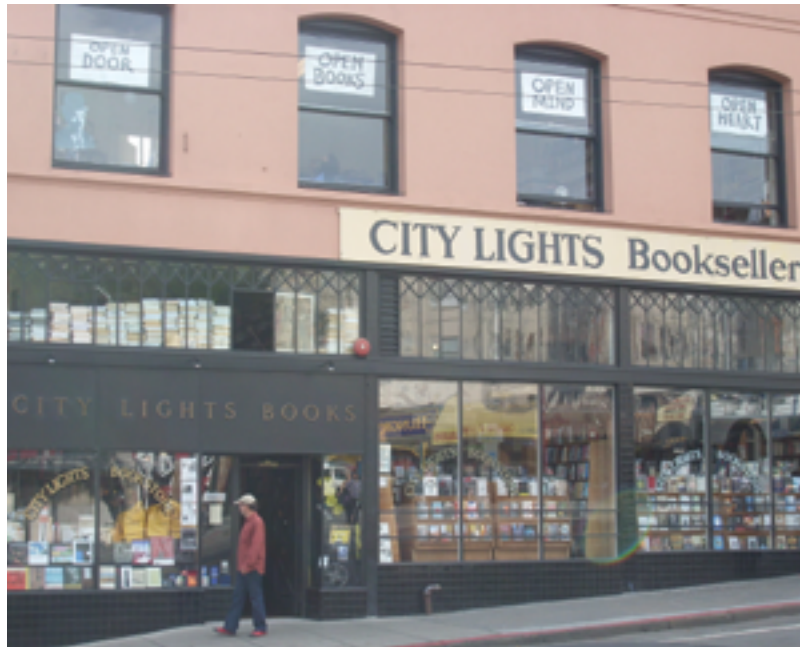
Private view Thursday 14 July

For information on how to find the Truman Brewery visit www.trumanbrewery.com

visions! omens! hallucinations! miracles!

Blenheim Walk

4 July – 8 October



Founded in 1953 in San Francisco by poet and painter Lawrence Ferlinghetti and Peter D. Martin, the legendary City Lights Books was at the forefront of the American counter-culture movement in the 1950s and 1960s and the Beats' legacy of anti-authoritarian politics and insurgent thinking continues to be a major influence both in the store and in the titles they publish.

This display on the First Floor at Blenheim Walk includes work by Allen Ginsberg, Jack Kerouac, Philip Lamentia, Pier Paolo Pasolini, Charles Bukowski, Fernando Pessoa and others alongside photographs, broadsheets and posters.

Vital Signs

Blenheim Walk

July 15 – 30 September



This small exhibition features drawings, collages, paper-cuts and prints by leading young artists and illustrators including Jaakko Pallasvuo from Finland, Iris Schwartz from Switzerland, Caroline Gedechens from Germany, William Schaff from the USA and Lizzy Stewart from the UK among many others.

The Illuminated Room

Vernon Street Lecture Theatre



Yellow Movies series, Tony Conrad, 1972-76
image courtesy Greene Nafali.

Curated by William Rose, *The Illuminated Room* is an ongoing series of screenings of artists' film and video presented by Leeds College of Art. Each month will look at the work of a different individual artist, from contemporary practitioners to key figures from the histories of experimental and avant-garde cinema.

Forthcoming screenings include work by Tony Conrad and The Otolith Group.

Screenings are free and open to the public – for dates and times visit www.williamrose.org.uk/theilluminatedroom

Leeds College of Art has a large programme of exhibitions held in our two main College buildings. We welcome proposals and suggestions for future shows.

The College also has an ongoing programme of talks and events, many of which are open to the public.

For more information about our exhibitions and events, or if you would like to be placed on our mailing list, contact: exhibitions@leeds-art.ac.uk or call Terry Jones, Exhibitions Officer on 0113 202 8263.



Locations

1. Blenheim Walk, Leeds LS2 9AQ
2. Vernon Street (Off Cookridge St) Leeds, LS2 8PH

Café facilities are available at all buildings.

Disabled access is available.

