

LEEDS
COLLEGE OF
ART

Exhibitions

January - March 2010. Admission free





Cover image

Chloe Early
On Twisted Wings #15
© Chloe Early and Stolen Space Gallery

Opening Times

Term time - 10am - 8pm Monday to Thursday
and 10am - 4pm on Fridays.
Out of term time - 10am - 4pm Monday to Friday.

Free entry. Group visits should be arranged with the College.

For more information please contact

exhibitions@leeds-art.ac.uk
0113 202 8000
www.leeds-art.ac.uk
www.leeds-artexhibitions.blogspot.com

The information given in this booklet was correct at the time of print. However we sometimes have to make changes and if you are planning a visit to a particular exhibition you are advised to contact the College before hand.

As is When

Blenheim Walk
18 December - 5 March



David Hockney
"Picture of a Landscape in an Elaborate Gold Frame from A Hollywood Collection" 1965
Lithograph in Six Colours 30 1/4" x 22 1/4"
© David Hockney

David Hockney
"Picture of Melrose Avenue in an Ornate Gold Frame from A Hollywood Collection" 1965
Lithograph in Six Colours 30 1/4" x 22 1/4"
© David Hockney

A Boom in British Printmaking 1961 - 1972

An exhibition organised with the assistance of the British Council which features work by some of the best known artists of the 1960's including Bridget Riley, David Hockney, Richard Hamilton, Derek Boshier, Peter Blake, Joe Tilson, Richard Smith, Colin Self, Eduardo Paolozzi, R.B. Kitaj, Allen Jones, Howard Hodgkin, Clive Barker and Patrick Caulfield.

An Indecisive Moment

Blenheim Walk

15 January - 29 January



Juno Carabott-Tortell "Bangkok Lady Boy"

The genre of 'documentary photography' is currently in a state of flux and the criteria that once defined it are no longer observed or current. Bresson's Decisive Moment has been reinvented and Martin Parr has recently encouraged photographers working in this field to "get modern". What he meant by this has been widely interpreted.

An Indecisive Moment is a selection of work made by Year Two students on the FD/BA Photography course:

Jeff Kleinsmith and Jesse Ledoux

Blenheim Walk

15 January - 12 April



Patents Pending

Jeff Kleinsmith and Jesse Ledoux are two innovative American designers producing through their company, Patents Pending, hundreds of gig posters for as many bands.

Besides being a long time art director for Sub Pop Records, Seattle based Jeff Kleinsmith is a celebrated freelance designer.

Grammy Awards nominee Jesse Ledoux worked as an art director and designer, creating iconic posters and album cover artwork. He now works out of his studio in Providence, Rhode Island, working with Kleinsmith on projects and on solo commissions.

This small display shows a range of their solo and joint work.

Chloe Early

Blenheim Walk

15 January - 26 February



© Chloe Early and Stolen Space Gallery

On Twisted Wings

Chloe Early was born in London in 1980 and grew up in Cork, Ireland. Since graduating from the National College of Art and Design, Dublin in 2003 she has exhibited regularly in Cork, Dublin and in London where she has lived since 2004. Chloe is represented by the Stolen Space Gallery on Brick Lane in London.

The exhibition shows a selection of prints from her series *On Twisted Wings*.

Richard Downer

Vernon Street

22 February - 5 March



Leeds Town Hall

Richard Downer was a student at Leeds College of Art from 1949-1953. After completing his National Service he began an advertising career in London and following ten years as an Art Director became a Design Consultant where his creative work included corporate identities, publications for major companies, stamp designs and many typographical disciplines as well as designing British Telecom Telephone Directories - he illustrated the directories throughout Britain for fifteen years. Richard was a fellow of the Society of Industrial Artists and Designers and President of the Society of Typographic Designers.

He currently draws and paints from his London studio in Kentish Town and the exhibition includes many examples of his recent work as well as illustrations and designs.

Lizzie Harrison and Green Streets

Blenheim Walk

22 February - 5 March



ReMade in Leeds

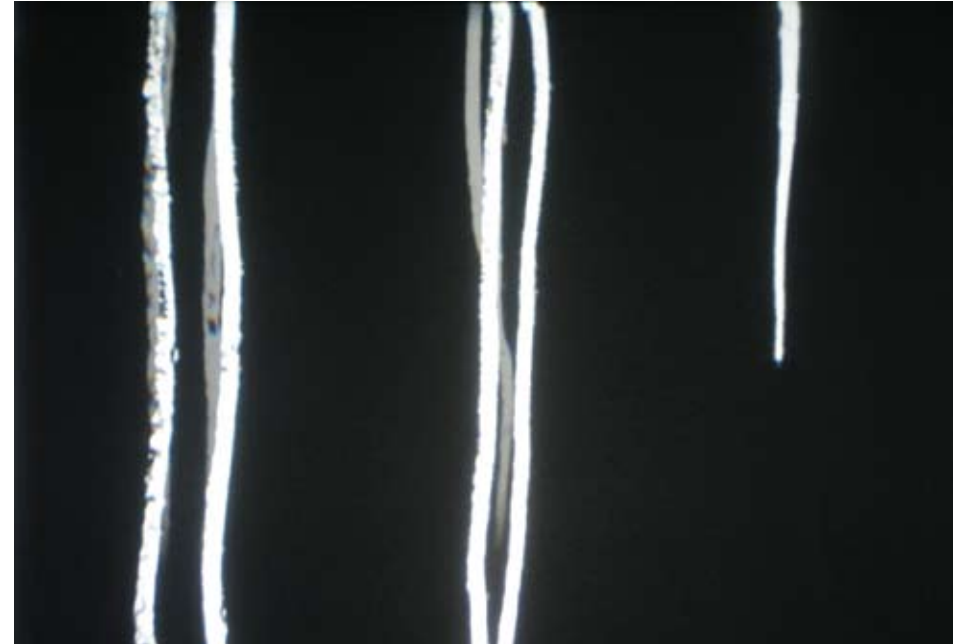
The global fashion industry needs to become more sustainable and this exhibition explores local, practical and creative solutions. Bringing together the work of Leeds College of Art and London College of Fashion graduate Lizzie Harrison and the University of Leeds action group Green Streets, 'ReMade in Leeds' offers an inspiring story of how a big difference can be made locally.

Lizzie presents a collection designed and made in Hyde Park, Leeds using only waste textiles whilst working with local women to produce a unique and directional aesthetic. Green Streets will also present their annual waste clothing collection and free shop strategy. The work challenges the current fashion system, questions our modern throwaway consumer attitude and offers ideas for future designers.

Len Lye

Blenheim Walk

8 March - 12 March

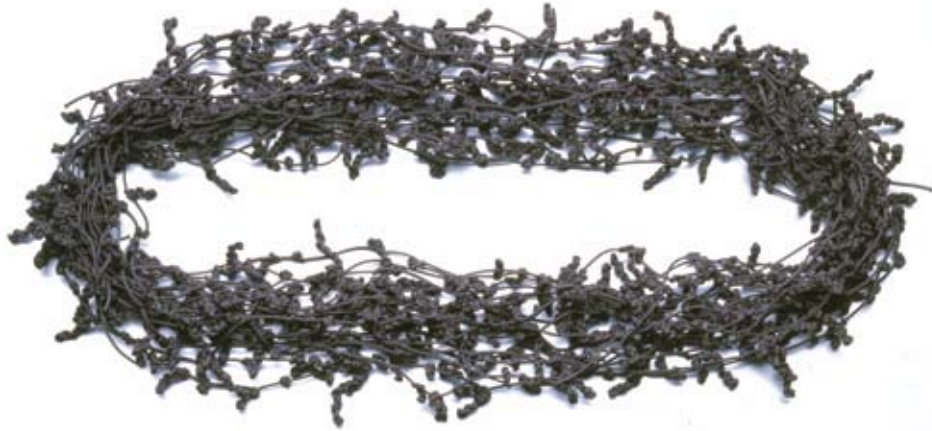


Len Lye was born in Christchurch, New Zealand in 1901 and is best known for his experimental films and kinetic sculpture. His films are held in wide ranging archives including the Museum of Modern Art in New York, the British Film Institute, the University of California, the New Zealand Film Archive and many others. Despite becoming an American citizen in 1950 most of his work went to New Zealand after his death in New York in 1980.

To create *Free Radicals*, one of his best known works, Lye used black film stock and scratched designs into the emulsion. The result was a dancing pattern of flashing lines and marks, as dramatic as lightning in the night sky. In 2008, this film was added to the American National Film Registry.

Mah Rana

Blenheim Walk
8 March – 26 March



Jewellery is Life

Jewellery is Life highlights the ways we use jewellery to mark occasions and events, significant or the everyday. Through jewellery, issues of value, communication, personal and collective histories are explored. The work reflects the importance of owning, giving and wearing jewellery throughout our lives. This includes Meanings and Attachments, an ongoing written and photographic record of people's personal connections to the jewellery that they wear.

Mah Rana studied jewellery at the Royal College of Art and psychology at London Metropolitan University.

Lizzy Stewart

Blenheim Walk
8 - 26 March



The Men Who Build Magnitogorsk

Lizzy Stewart studied illustration at Edinburgh College of Art and since graduating in 2009 her illustrations have been seen in a wide range of publications from Juxtapoz to the Scotsman. Her work has many influences including Eastern European folk culture, Russian history, contemporary American literature and sad songs.

The Men Who Build Magnitogorsk is a collection of drawings and paintings documenting the lives of the men involved in the construction of the Russian industrial city of Magnitogorsk in the 1930s. The exhibition draws on images spanning the work undergone during Stalin's five year plans through to the present day where Magnitogorsk is one of Russia's largest cities and one of the world's most polluted.

Choque Cultural

Blenheim Walk

8 March - 26 March

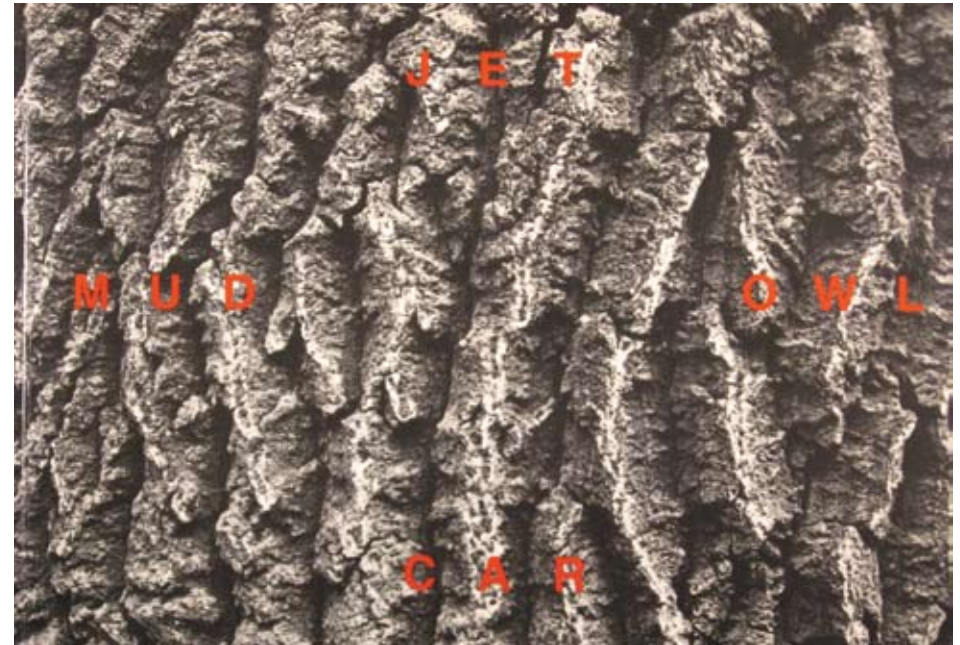


Choque Cultural, Portuguese for Culture Shock, is a contemporary art gallery based in São Paulo with strong links to underground culture, showing pop, outsider & young art in a highly original style. Since 2004 the gallery has been producing exceptional silk screen editions featuring some of the gallery's best known artists including Nuno Valerio, Silvano Mello, Daniel Melim, Derlon Almeida and many others.

Hamish Fulton

Vernon Street

17 March - 14 May

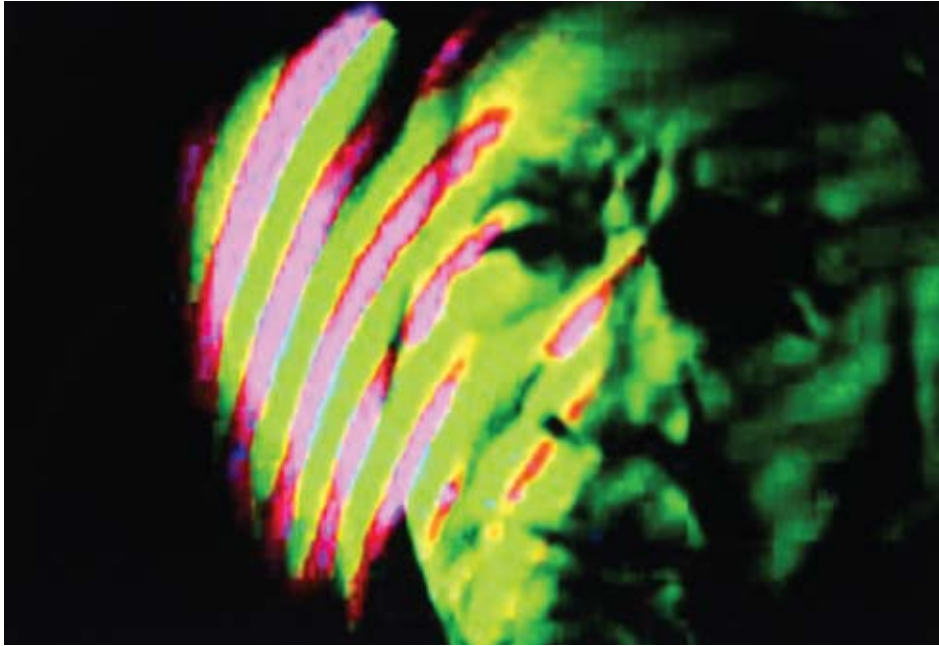


Hamish Fulton was born in London in 1946 and studied at Hammersmith College of Art, St. Martin's School of Art and the Royal College of Art. Since the 1960's Hamish Fulton has been creating text and image work as well as sculpture in response to his physical contact with the surrounding landscape and since 1973, when he declared that he would only make art resulting from the experience of individual walks, he has undertaken walks throughout the world.

This display, part of the college collection, will be shown in the Vernon Street library and includes a wide range of work.

Interim

Vernon Street
10 - 26 March



Tom Cookson "Dream Dish Model: TC08"

Interim is an exhibition open to all current second year BA Fine Art students at British art schools who have previously completed their foundation course at Leeds College of Art. The show will be selected by artist Katie Paterson, Jon Wood, Research Co-ordinator at the Henry Moore Institute and Sean Kaye, Fine Art Co-ordinator, Foundation Studies, Leeds College of Art.

Leeds College of Art has a large programme of exhibitions held in our two main College buildings. We welcome any proposals for future shows.

Over the coming months we will also be screening a series of key artists' films during the evening in the Vernon Street lecture theatre as well as talks by leading artists and designers in both college buildings.

For more information, or if you would like to be placed on our mailing list, contact exhibitions@leeds-art.ac.uk or call Terry Jones, Exhibitions Officer on 0113 202 8263



Locations

- 1. Blenheim Walk, Leeds LS2 9AQ
- 2. Vernon Street (Off Cookridge St)
Leeds, LS2 8PH

