



People & Planet University League 2025/26 Information

People & Planet's University League is a league table of UK universities ranked by environmental and ethical performance. It is compiled annually by the student campaigning network, People & Planet.

The ranking is assessed by People & Planet in the summer and published at the end of the year.

The following information outlines Leeds Arts University's sustainability activity in relation to [People & Planet criteria for the following sections](#):

Assessed between July 21st-1st August:

- [Sustainable Food](#)
- [Staff & HR](#)
- [Environmental Policy and Strategy](#)

SUSTAINABLE FOOD

1. Does the university have a publicly-available sustainable food policy (or a Sustainable Procurement Policy which integrates sustainability criteria for food) that is reported on annually at a senior level of the university?

The University does not currently have a publicly available sustainable food policy reported on at a senior level.

However, sustainability is covered in our overall procurement approach and procedures include the consideration of sustainability.

2. Does the university's sustainable food policy require that sustainability standards are embedded in tenders & contracts with external contractors?

Sustainability is considered in our overall procurement approach.

Our on-campus café is run by [Dot the Lions](#), a local independent operator with an emphasis on top quality coffee and food, and vegetarian and vegan options. Dot the Lions offer a range of ethically considered brands e.g. [Tony's chocolate](#) which is certified Fairtrade, [Two Farmers crisps](#) (100% compostable packets), [Darkwoods coffee](#) (imported on fairtrade terms), [Karma drinks](#) and [Charitea](#) (organic and fairtrade) - in addition to fresh products made in-house, sourcing local and seasonal ingredients where possible.

3. Has the university implemented a comprehensive framework for continual improvement in sustainable food and catering that is regularly audited and verified

by an external organisation credible to the sustainable food standards movement and stakeholder bodies?

We do not run our own on-campus cafe but high priority to sustainability is given in choosing providers, as outlined in the response above.

4. Does the university provide space and / or other support for student / staff-led sustainable food projects?

As a small University with two city centre sites with space constraints, there is limited outdoor space suitable for the growing of food at either campus.

The Sustainability Manager and Student Union may consider alternative future routes to provide support for a student/staff-led sustainable food project such as partnership with a local community project, garden or allotment e.g. exploring collaboration or joint volunteering opportunities with University of Leeds.

5. Does the university have at least one plant-based food outlet on campus?

As a small specialist University with under 5000 students, the sole food outlet on campus, the [Dot the Lions](#) café, is operated by an independent locally-based caterer. They exclusively operate a café on campus at the University and have an emphasis on offering a wide range of vegan (55%) and vegetarian (35%) options across the regular menu every day.

Additionally, Dot the Lions have launched a weekly Vegan food promotion to further encourage plant-based dietary choices:



1. Is sustainability included within the portfolio of responsibilities of a member of the university senior management team?

Governance - senior staff

The Vice-Chancellor Chairs the Sustainability Committee, and the Board of Governors consider the Annual Sustainability Report.

Please see: [Sustainability | Leeds Arts University \(leeds-art.ac.uk\)](https://leeds-art.ac.uk/sustainability)

2. Who is working on environmental sustainability?

Leeds Arts University is a small, specialist University with fewer than 500 staff and less than 5000 students.

Dedicated and expert staff

Sustainability Roles: Sustainability Manager

Working collaboratively with staff, students and partners, the Sustainability Manager holds a dedicated sustainability role, responsible for supporting the strategic direction and coordination of on-the-ground delivery of the Institution's sustainability objectives, aligning to the Institution's Sustainability Framework and the SDG Accord.

Contact Information: sustainability_group@leeds-art.ac.uk

There also a number staff within the Estates Department who progress the Estates Sustainability Plan and deliver sustainability projects and Initiatives at the University:

Director of Estates & Resources

Estates Project Support Manager

Estates Facilities Manager

3. Does the university support a staff engagement scheme to involve staff in improving the environmental performance of the university?

For a number of years, the Staff Conscious Creatives Network has been one way in which staff are engaged to be involved in improving the environmental performance of the University, through highlighting areas of resource use, opportunities for efficiency, sharing and best practice (see ESD section for further information).

As part of an overall refresh of the University's Sustainability Framework (due to be launched in academic year 2025/26), a new Staff Sustainability Champions Group is under development, for all staff.

The Group will have three strands:

- Teaching & Learning
- Research
- Business Support

The Staff Sustainability Champions Group will serve to involve staff further in improving the environmental performance of the University by supporting over-arching Sustainability Objectives (identified through the development of the refreshed Sustainability Framework) through delivering on team / function-specific activity, documented in Departmental Sustainability Action Plans.

Other ways that staff engage with sustainability:

- Membership of the Sustainability Committee includes a representative cross-section of staff from across the University to ensure broad oversight of and input to sustainability activity, minutes are available for all staff to read.
- Through Sustainability Plans which are in place and under review for Business support functions across a range of areas.
- In their own creative practice, research and teaching; some examples of which are included in the [Annual Sustainability Report](#) (page 9, 15-19)
- Undertaking Carbon Literacy Training e.g. via the [SAIL Knowledge Exchange Partnership](#).
- Sustainability is a standing agenda item at Course Team meetings attended by the Sustainability Manager, course staff and student representatives.
- Staff are also involved in sustainability-related working groups including [EAUC Communities of Practice](#), [SAIL Circularity Working Group](#), [Yorkshire Circular Lab](#) and the [CHEAD Sustainability Think Tank network](#).

POLICY & STRATEGY

1. **Does the university have a public sustainability policy that has been published or reviewed and updated within the last 5 years?**

Our Sustainability Framework is publicly available [here](#).

This Framework guides how we engage with and advance our sustainability practices, and through which we aim to educate and encourage our staff and students to consider sustainability more consciously. Alongside this we have an Estate Sustainability Plan which sets out actions, initiatives and resources to achieve our net zero carbon emissions target for the Leeds Arts University Estate by 2035.

Our Sustainability Framework is reviewed by our Sustainability Committee. This committee is Chaired by our Vice-Chancellor and meets three times a year. The members of the committee comprise of both staff and student representation. The Sustainability Committee plans, supports and monitors the University's sustainability activity and how it adheres to the University's Sustainability Framework. Minutes of these meetings are available to all staff.

Throughout 2024-25, work has been underway to develop an updated Sustainability Framework for the University. This work builds on the strong foundations of the existing Sustainability Framework which was first developed in 2015 to ensure that it continues to guide sustainability activity effectively and align to best practice. The new Sustainability Framework is due to be launched in academic year 2025-26.

2. **Does the university work to an environmental sustainability strategy, setting SMART targets for reducing environmental impact? (across 8 key areas)**

The University is continually seeking opportunities to improve its sustainability performance and reduce its environmental impact. As part of developing the University's new Sustainability Framework, targets are under consideration across a number of areas.

A summary of activity across 8 key areas of Construction & Refurbishment, Emissions & Discharges, Community involvement, Biodiversity, Waste management, Travel and Transport, Sustainable procurement and Water is provided below:

1. Construction & Refurbishment

Construction

The extension to our Blenheim Walk campus (known as B1) undertaken in 2019 achieved a Very Good BREEAM rating (certificate details here:

Certified BREEAM Assessments

Scheme	Assessor/ Auditor	Certification Number	NSO	Other Information	Client/ Developer	Project Type	Rating (%)
Education	Tetra Tech Limited	BREEAM-0079- 8736	BRE Global	2014: Further Ed Stage: Final Score(%): 59.3 Cert. date: 12/11/2019 Stage/Valid until: Final	Leeds Arts University	Education	59.3% Very good

[https://www.greenbooklive.com/search/displaycompany.jsp?partid=10023&comp
anyid=16023730](https://www.greenbooklive.com/search/displaycompany.jsp?partid=10023&comp
anyid=16023730)).

This project incorporated a large green (Sedum) roof, bat and bird boxes, Solar PV Panels and a covered secure Cycle store for 20 bikes to support sustainable travel methods.

In Autumn 2024, construction works occurring to extend the Café area at Blenheim Walk completed.

A number of sustainable elements have been designed in to the project including:

- additional solar PV on new roof terrace
- removal of gas from our commercial kitchen
- replacement of old catering equipment for new more energy efficient equipment
- replacement of an old Air Handling Unit serving the café and first floor studios
- installation of a new bicycle shelter with sedum roof
- installation of beautiful and flourishing green wall
- installation of several bee bricks and bird boxes
- wildflower meadow to the front of the building
- establishing new planted borders and tree planting
- replacement of 5 x 15-year-old studio Air Conditioning units for new energy efficient units
- extension of the Building Management System at Blenheim Walk allowing improved visibility and control of internal environments
- donations of surplus furniture to charity via our Framework contractor

Refurbishment

Over the past year, a range of refurbishment works have been progressed to deliver on actions in

The University's Estate Sustainability Plan sets out the target and proposed actions for the University to achieve net zero emissions from its Estate by 2035.

The summary matrix below outlines proposed Estates sustainability projects and milestones over the next 5 Years

LAU Estates Sustainability Capital Projects 2025-2030	Within Period	25-26	26-27	27-28	28-29	29-30
Blenheim Walk						
Complete roll out of LED lighting						
Complete Install/programming of remaining lighting controls						
BA2 Main Plant Room Obsolete Gas Boiler Replacement for Heat Pumps						
BA2 DCB Gas Boiler Replacement Pumps Heat Pumps						
BA2 Replacement of Remaining old Windows						
Install Additional PV's for energy Generation						
BA2 Improve Flat Roof Insulation						
Vernon Street						
Complete roll out of LED lighting						
Complete Install/programming of remaining lighting controls						
Install PV's for energy Generation						
Install External Glass Box/Porch at Entrance to Create Insulating Lobby						
Install Heating Control Valves to Each Floor						
Connect to Leeds Pipes District Heating Scheme if energy market conditions make it viable						
Rossington Street						
Complete roll out of LED lighting						
Complete Install/programming of remaining lighting controls						
Install PV's for energy Generation						
Install Heating Control Valves to Each Floor						
Upgrade Roof Lights to Double High Performance						

Over the past year, a range of refurbishment works have been progressed. These include:

- **LED roll-out:** over 95% of lighting switched to LEDs at Blenheim Walk campus, with installation works in remaining studios scheduled for completion over Summer 2025. C. 70% of lighting at the Vernon Street campus is already LED and the remaining 30% will be progressed following completion at Blenheim Walk.
- **Secondary glazing:** The Tender has completed and been awarded for new sympathetic and fully reversible secondary glazing to our Vernon Street and Rossington Street buildings. The scheme is underway and scheduled to complete across both sites by the end of August 2025. The thermal and acoustic performance of these two listed buildings significantly improve as a result of these works.

2. Emissions & Discharges

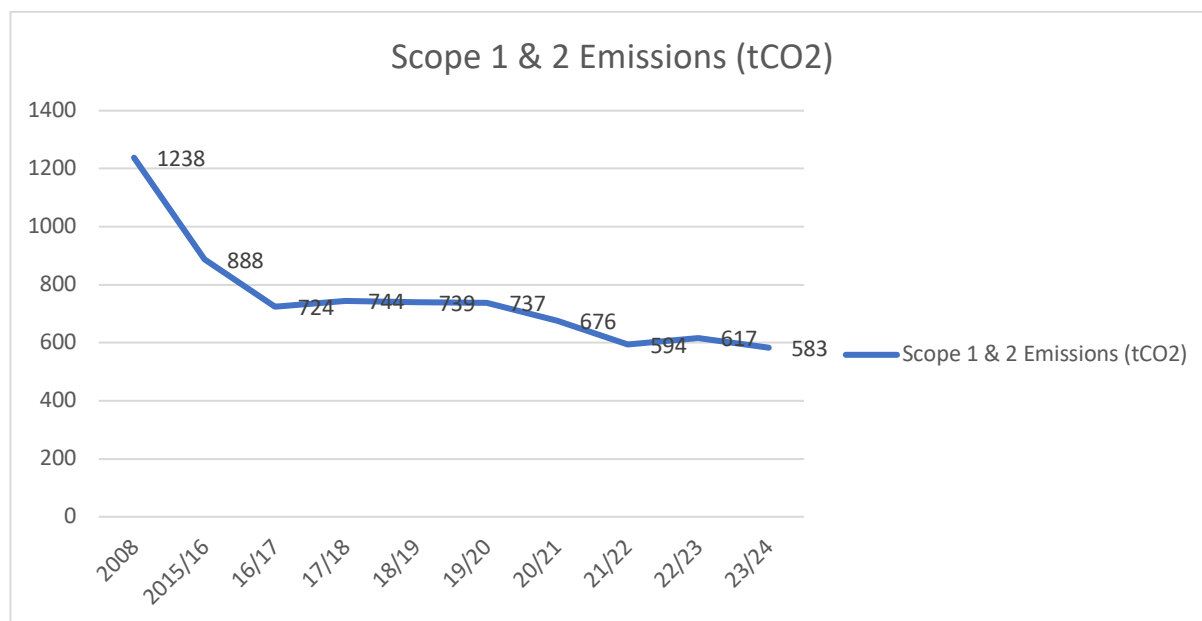
Our Estate Sustainability Plan sets out our actions, initiatives and resources to reduce our environmental impact and ensure we are on target for a net zero carbon emission by 2035.

The Plan was approved by the University's Senior Management Team, and resources to deliver the plan have been budgeted for. Significant long-term planning and collaboration with our partners and suppliers will also be required to meet the 2035 target.

University carbon emissions are reported annually by consumption/generation source.

Cumulative annual carbon emissions are included within the University's Annual Financial Statements, available here: <https://www.leeds-art.ac.uk/about-us/legal-and-governance-at-leeds-arts-university>.

The graph below shows the University's Scope 1 and 2 emissions (tCO₂) since 2008, indicating a continued reduction in the University's Carbon Emission despite a significant expansion of the University's Estate, which has increased by 40% since 2008



Note: The University resumed reporting - including of carbon emission data - to the HESA EMR for 2022-23 and for 2023-24.

3. Community involvement

The University is involved in the local and wider community in a number of ways, many of which are highlighted in our [News Stories](#), via the [Annual Sustainability Report](#) and [Annual Equality & Diversity Report](#).

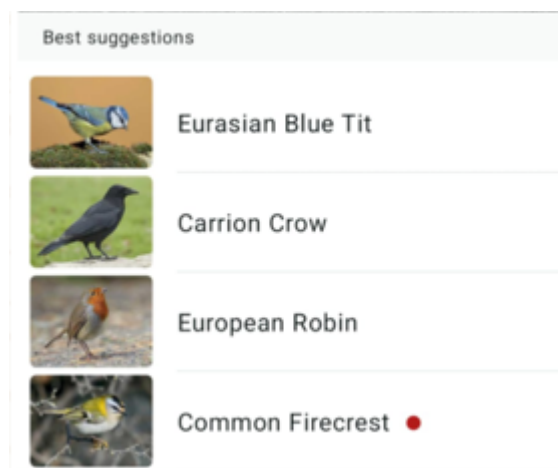
One example is the University's continued participation in the [Student Changeover / Moving Out campaign](#) with partners including Leeds City Council, Unipol and other HEIs in the city as part of the Leeds Universities Community Partnership, supporting responsible citizenship, community cohesion and reducing waste in the local community generated when student tenancy agreements conclude at the end of June and students leave their accommodation for the summer.

4. Biodiversity

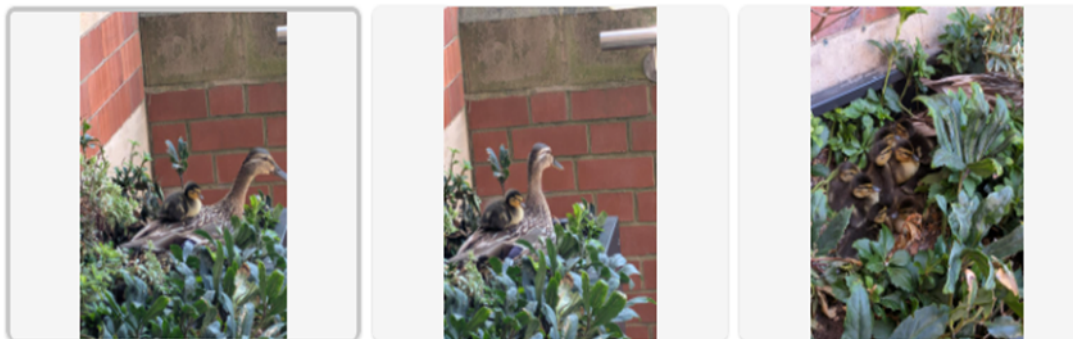
As a small University with two city centre sites with limited external spaces, there are constraints in implementing biodiversity initiatives.

None the less, at Blenheim Walk there are bat and bird boxes, bee bricks and a green roof, recently enhanced further with a green wall, additional tree and wildflower planting, and new cycle storage with a sedum roof.

In January 2025, a preliminary Biodiversity Audit was undertaken by staff, of (5590m²) of Urban green space land owned by the University. This green space had been continually maintained with the grass cut on a monthly basis. To support and improve the bio-diversity in this urban environment a decision was made to let the grass land rewild to increase the diversity of plant species and encourage more habitation from wild life. Once the rewilding had established a sample bird audit was undertaken by the Sustainability Manager and the following birds were identified via the [Merlin app](#):



In June this year, staff working at the University's Vernon street site in the city centre discovered a duck's nest containing nine eggs in our green planter at the main entrance of the building.



On the advice of RSPB, the nest was left undisturbed. In July 2025, all nine eggs hatched and the mother duck was observed leading the ducklings through Leeds city centre to the canal.



Future annual auditing is planned to be undertaken to inform proposals and the development of opportunities for future Biodiversity objectives as part of the new Sustainability Framework.

5. Waste management

Waste management is continually monitored, and reported to every Sustainability Committee meeting.

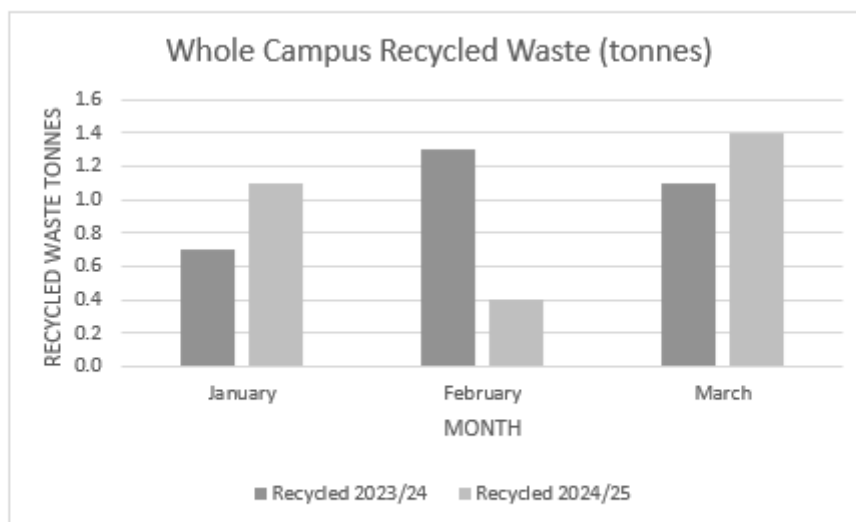
The University operates a zero to landfill policy for waste. Auditing indicates that overall resource use and waste reduced compared to the previous year. Recycled waste has increased as awareness of waste types increases amongst students and staff.

During 2023-24, 59% of the University's waste was recycled (+2% increase compared to 2022-23) with the residual 41% of general waste (-2% decrease compared to 2022-23) going to the local energy waste plant to support Leeds City Council's district heating network.

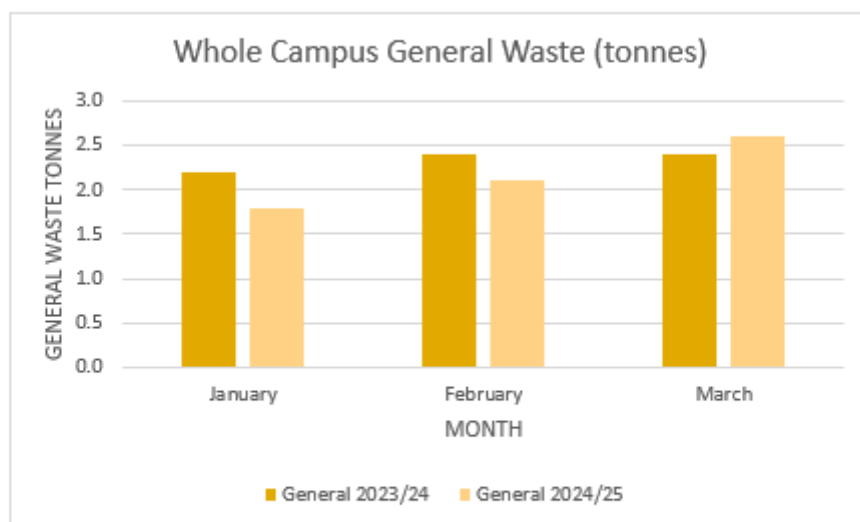
General waste and skip waste is captured monthly and reported as a standing agenda item to the Sustainability Committee which meets three times a year.

An extract of waste data reported to Sustainability Committee is provided below:

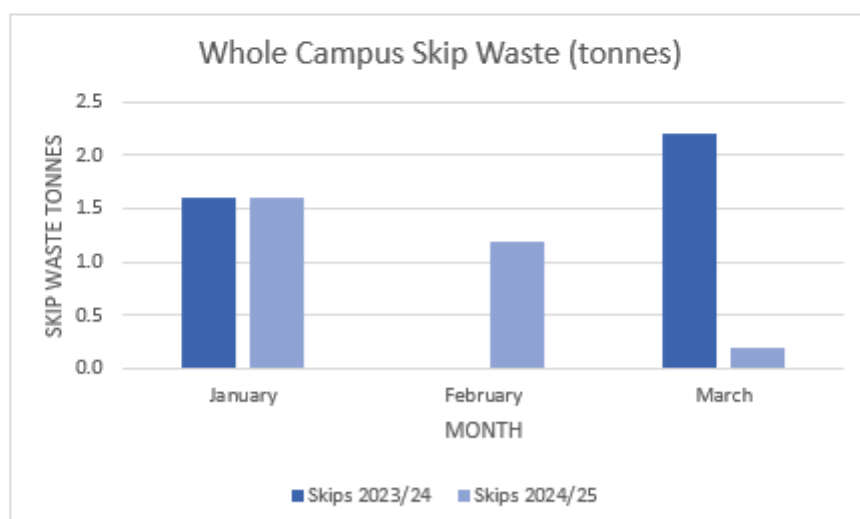
WASTE



ABOVE – In total we produced less recycled waste during these 3 months in 2025 compared to the same months in the previous year.



ABOVE – Just like the recycled waste, the total general waste that we produced during these 3 months in 2025 is less than the same months in the previous year. Across the board with waste, staff and students seem to be following the reduce/reuse/recycle methodology which is seeing our waste numbers reducing.



ABOVE – Just like the recycled waste and general waste, the total skip waste that we produced during these 3 months in 2025 is less than the same months in the previous year. Across the board with waste, staff and students seem to be following the reduce/reuse/recycle methodology which is seeing our waste numbers reducing.

Source: Estates Report to Sustainability Committee, April 29th 2025.

Summary data is also captured in the Annual Sustainability report, available online here: leeds-arts-university-sustainability-report-2023-24.pdf

From Monday 31st March 2025, new Government legislation known as ‘Simpler Recycling’ came into force to increase waste material segregation and improve recycling rates in organisations. In practice at Leeds Arts University, this has meant the introduction of separate waste bins for food and for glass.

The University is working closely with our Waste Management Contractor to monitor the bins for usage and contamination. This will next be reported to the Sustainability Committee in the first term, 2025/26.

6. Travel and Transport

Leeds Arts University undertakes an Annual Staff & Student Travel Survey to monitor commuting patterns and inform the promotion of sustainable travel measures.

As summarised in the table below, latest results indicate a sustained high and increasing level of commuting by sustainable mode:

	STUDENT %			STAFF %		
	2023	2024	2025	2023	2024	2025
TOTAL Travel by Sustainable mode (On foot, Cycle, Train, Bus, Car-share)	99	95	96	63	70	74

Of those who completed the 2025 Travel Survey run in March 2025, sustainable travel to the University by students was up to 96% (+1% compared to 2024) and by staff was up to 74% (+4% compared to 2024).

From these results, a set of recommendations/objectives / targets is developed to inform the University's sustainable travel priorities for the year ahead and documented in the Travel Survey report which is presented to the Sustainability Committee:

1. Update staff & student Travel Information Travel Guide to promote sustainable travel options

Walking

2. Continue to support and promote this via walking route maps/guides/ links
3. Encourage walking as part of a multi-mode journey
4. Highlight availability of showers/ changing facilities for use by people wish to run (and cycle).
5. Signpost to travel safety advice e.g. the free [WalkSafe Leeds](#) app promoted by Leeds City Council

Cycling

6. Promote cycle routes, safe cycling advice, cycle parking, shower & change facilities via University comms channels

Bus and Rail

7. Promote the [Student MCard](#) which offers discounted bus and bus-and-rail ticket options across the Metro region and specific local operator offers including [First Bus](#) student tickets.
8. Promote the [Corporate Annual MCard scheme](#) available to Leeds Arts University staff via our membership of the [West Yorkshire Travel Plan Network \(WYTPN\)](#) which offers up to 12% off pre-paid travel (different options are available) and specific local operator offers including [First bus Commuter Travel club offers](#) including on [Leeds Park & Ride](#).
9. Promote the location of bus stops close to LAU sites and walking routes to Leeds train station via University comms channels
10. Explore hosting an event to promote sustainable travel to staff and students in conjunction with partners e.g. Leeds City Council Influencing Travel Behaviour (ITB) Team and/or local transport providers

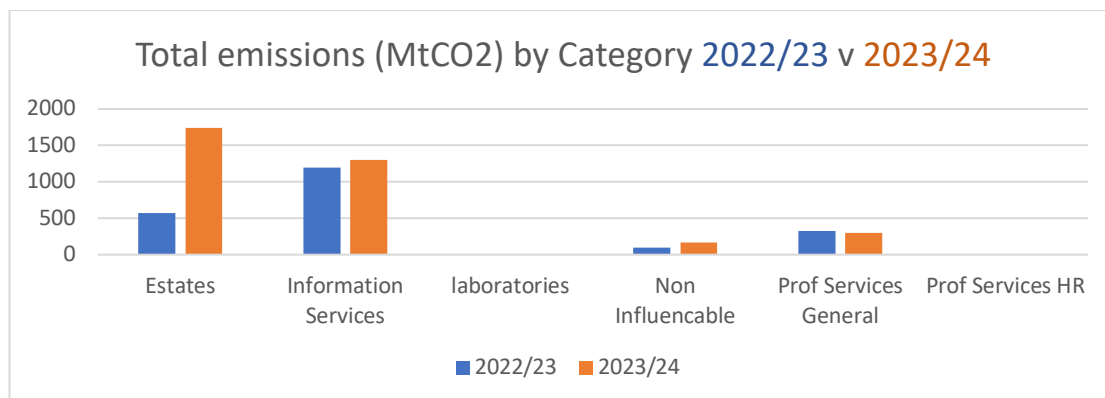
Furthermore, our external travel bookings provider for educational trips enables the carbon emissions from University travel to be calculated and considered as part of making business travel arrangements.

7. Sustainable procurement

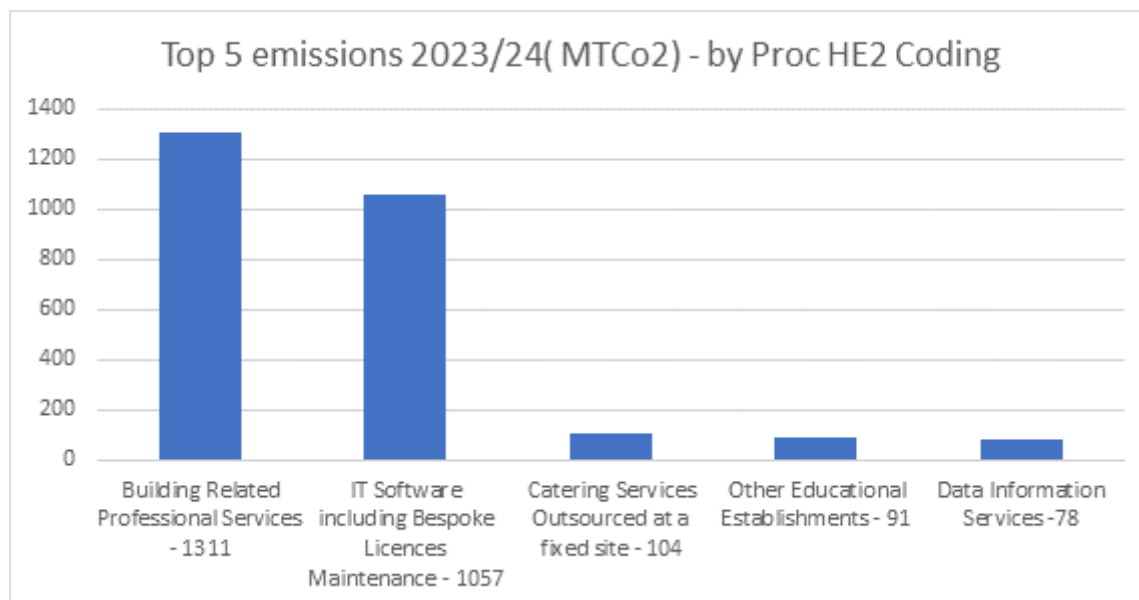
Sustainable procurement activity is audited in a number of ways, including:

- Leeds Arts University is part of the **North-East Universities Purchasing Consortium (NEUPC)**, through which we are able to access Framework suppliers whose sustainability has been assessed. Updates on this are provided via the Procurement Consultant's updates on tender activity to Sustainability Committee on a termly basis.
- Through NEUPC, the University is also an affiliate of **Electronics Watch**, through which we support work to promote and protect the rights of workers in global supply chains through the monitoring & reporting of supply chain activity. Updates received by Electronics Watch by the Sustainability Manager and Procurement Consultant, with engagement from IT as required.
- The percentage of work procured via Frameworks i.e. applying sustainability criteria is reported as a standing agenda item to the Sustainability Committee which meets three times a year. Scope 3 emissions from calculated from (HESCET) supply chain data is reported annually to the Sustainability Committee.

Total Emissions



Top 5 scope 3 by Procurement coding ('Proc HE2 code')

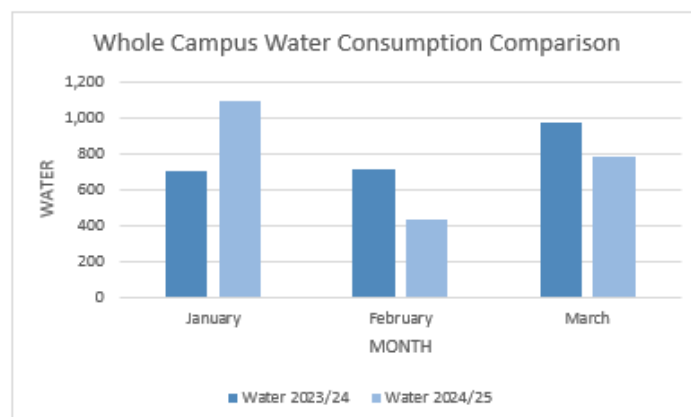


8. Water

Water consumption is continually monitored, and reported to every Sustainability Committee meeting.

An extract of water data reported to Sustainability Committee is provided below:

WATER CONSUMPTION



ABOVE: Water consumption in January 2025 was a lot higher compared to the same month last year. We had the green wall and the extra kitchen sinks installed at the back end of 2024 which would have also contributed to this increase in January 2025. At the end of January 2025, we reviewed the amount of water needed for green wall with our maintenance company, which should have reduced the consumption moving forward. In February and March 2025, we did have quite a few washrooms removed from service due to various maintenance and repair issues, this has seen a reduction compared to the same period in the previous year.

Summary data is also captured in the Annual Sustainability report, available online here: [leeds-arts-university-sustainability-report-2023-24.pdf](#)