

Technical Specification

v2.2

145 Pro-Grip Aluminium Decking

Beautifully engineered and non-combustible aluminium deck boards are perfect for both residential and commercial settings. 145 Pro-Grip boards are highly slip resistant and easily installed with a simple hidden clip system.

Overview

Length

3600 mm

Profile

145 x 21 mm

Material

T6-6063 Aluminium

The data provided in EnviroBuild technical specifications are correct at the time of publication. EnviroBuild is continuously looking to improve existing products and increase transparency through further tests, meaning some information may change.

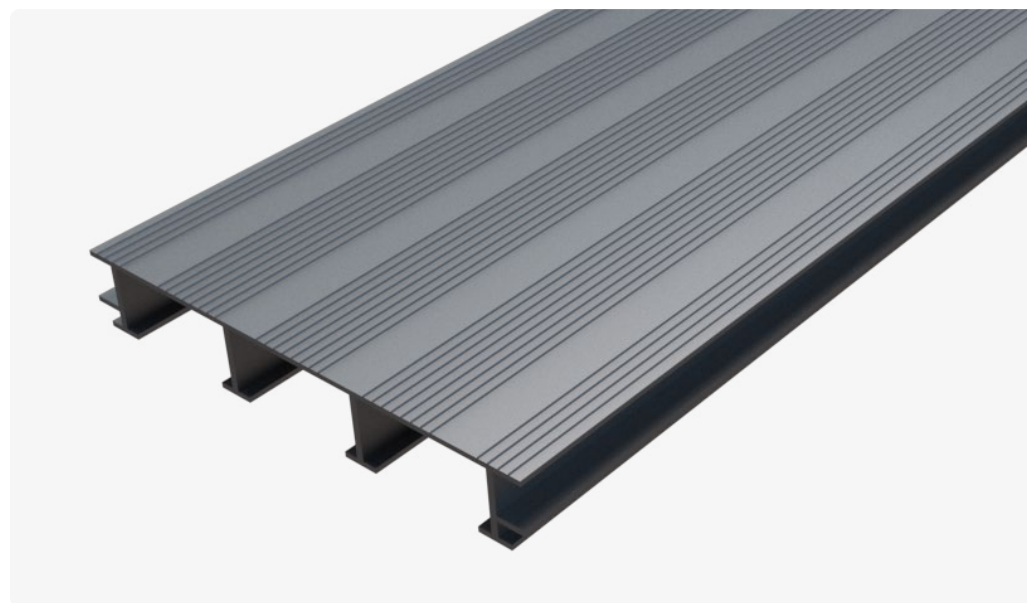
EnviroBuild reserves the right to update Technical Specifications as and when we become aware of any changes to the data.

Registered Number

09662640

Registered Office

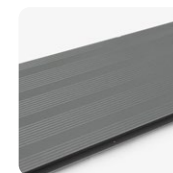
29 Pear Tree Street,
London,
EC1V 3AG



Sepia Brown
8014



Grey Brown
8019



Dusty Grey
7037



Anthracite Grey
7016

145 Pro-Grip Technical Data

Main Properties

Property	Attribute
Dimensions (WxDxL)	145 x 21 x 3600 mm
Material	Aluminium 6063-T6, Interpon PE powder
Finish	Anti-slip Qualicoat 1 textured powder coat
Weight	8.55 kg/m ²
Colours	8014 Sepia Brown, 8019 Grey Brown, 7037 Dusty Grey, 7016 Anthracite Grey (bespoke RAL colours available)
Warranty	Up to 30 years
Reaction to fire (to EN 13501)	A2 s1 d0, A2fl s1
Pendulum test slip resistance (PTV) (to BS EN 14231)	Dry: 68 Wet: 46 (Low slip potential) Wet (0° to profile): 32 Wet (45° to profile): 42 Wet (90° to profile): 64
Micro roughness slip resistance	Rz: 25 µm (Low slip potential)
Area moment of inertia (I)	2.58E-08 m ⁴

Center Spacings (per m)

With safety factor of 1.5

Note: BS 8579 suggests a maximum deflection of 5 mm

Acceptable Deflection

	1/180	1/360	1/480	5 mm
2 kN/m ²	0.83 m	0.61 m	0.52 m	0.85 m