

vivly living



# The Sessile

## Plot 26 & 27

4 bedroom, open plan living

The Willows  
DENBY DALE

Computer generated images are for illustrative purposes only and individual features often vary and may be subject to change.





## KEY FEATURES

- 1570 sq ft of internal living space
- Open-plan living
- 4 double bedrooms
- Oak doors
- Glass and oak balustrade
- Premium kitchen appliances
- Large glass lantern to kitchen/living area
- Electric garage door
- Ground floor flooring included
- PV roof panels
- A rated for energy efficiency

Built from natural tumbled Yorkshire stone, The Sessile is a four bedroom, light and airy contemporary home which provides approx. 1,570 sq. ft of living space, and is designed for today's modern way of life.

The spacious entrance hall leads through to the rear of the house featuring an open plan premium quality kitchen and family diner, a large roof lantern adds an extra dimension to the open plan living space. With a separate seating area and large double glazed sliding doors opening to a rear terrace and garden this really is an exceptional space, perfect to extend your living area outside – and a great spot for some after work relaxation .

A large living room with bay window, downstairs cloaks/WC and handy utility room, with external access door, completes this floor. The first floor consists of a principal bedroom, with separate dressing room and ensuite shower room, with Porcelanosa tiling. There are a further three double bedrooms, and a large family bathroom. An integral single garage completes this amazing family home.

Outside there is a front, side and rear garden and separate private parking for two cars. This home benefits from PV roof panels for a low carbon footprint and is and is 'A' rated for energy efficiency.

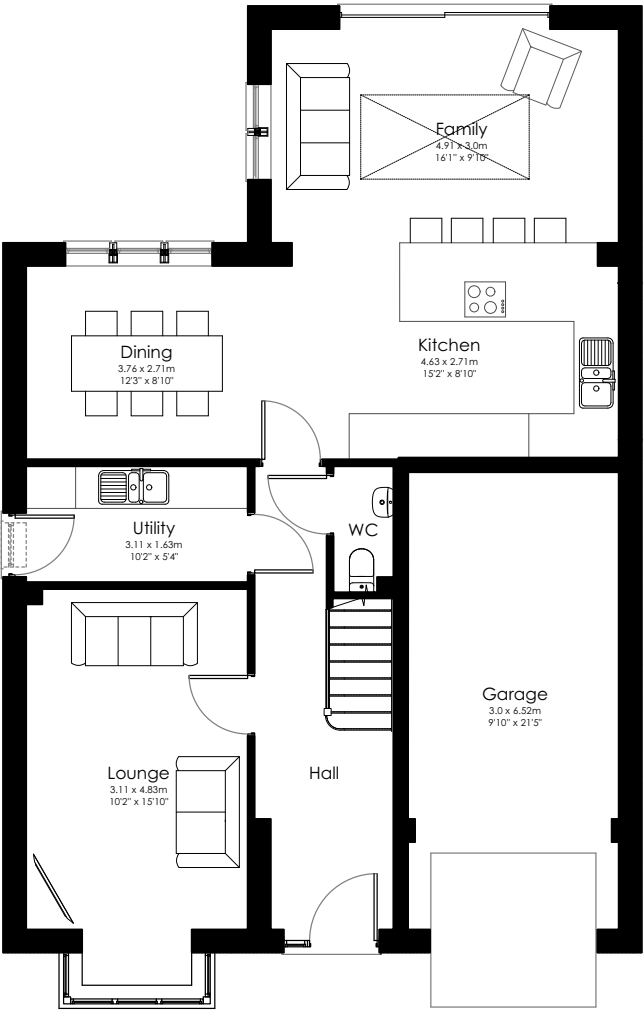


**With over £10K  
of upgrades  
included!**

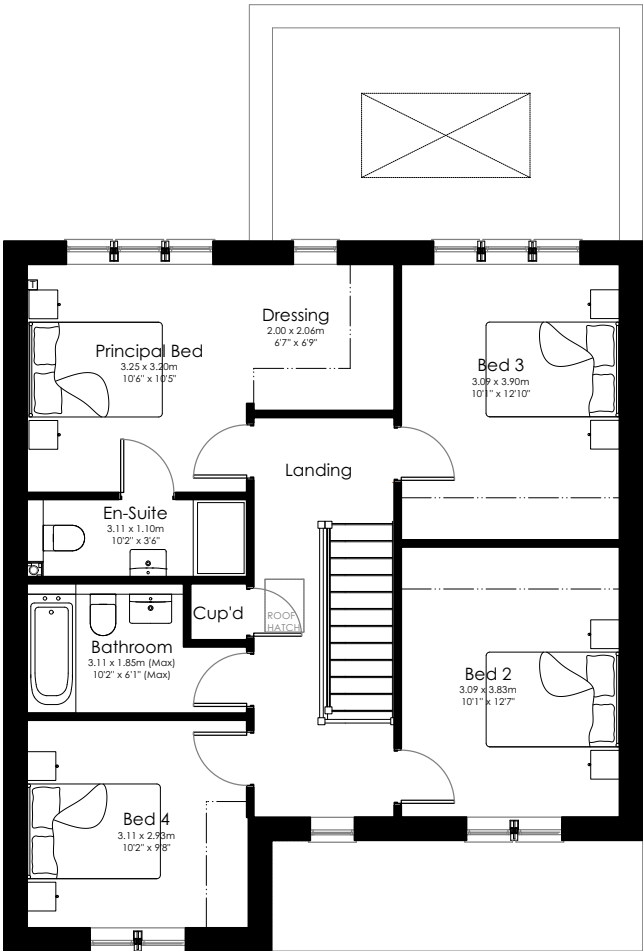




PLOT  
26 & 27

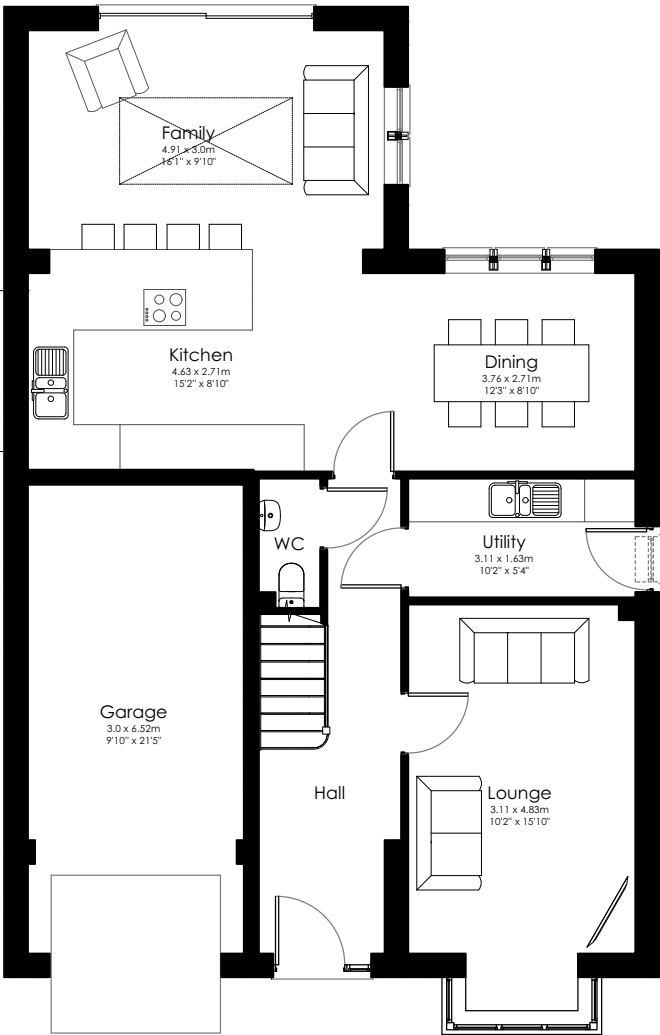


GROUND FLOOR  
PLAN  
75 sq. m / 811 sq. ft.\*

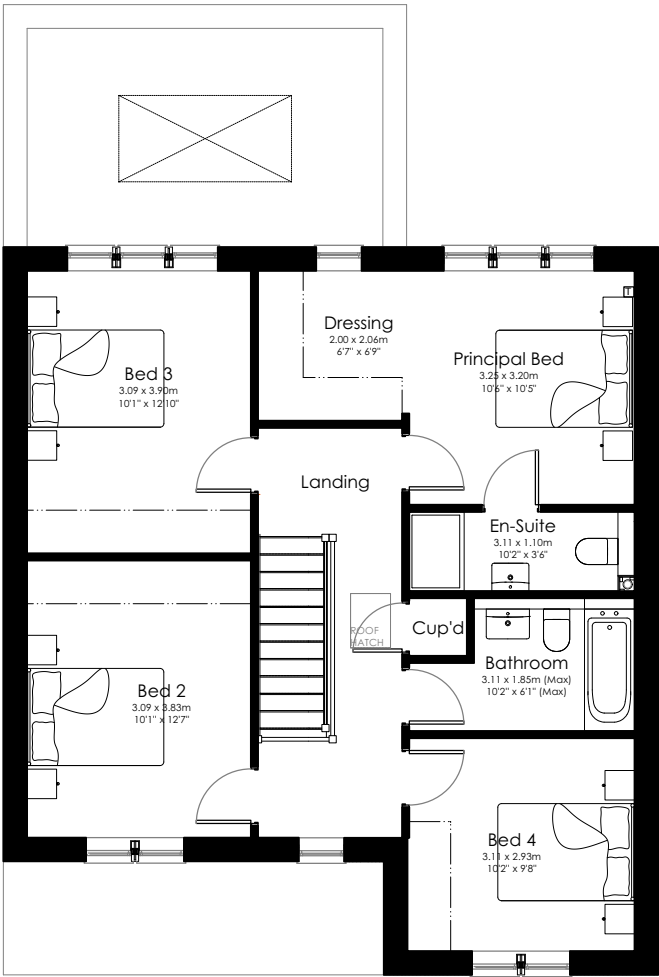


FIRST FLOOR  
PLAN  
71 sq. m / 759 sq. ft.\*

\*All dimensions shown are approximate



GROUND FLOOR  
PLAN  
75 sq. m / 811 sq. ft.\*



FIRST FLOOR  
PLAN  
71 sq. m / 759 sq. ft.\*

\*All dimensions shown are approximate



## INTERIOR SPECIFICATION

- Internal doors - Oak doors with Vivly handle
- Painted Heritage white walls & woodwork
- Profile MDF white painted skirting and architraves
- Heritage white painted softwood staircase with oak handrail and newel post, and glass balustrade
- Chrome electrical switches and sockets
- Lighting - Spotlights throughout ground floor, and principal bedroom
- TV sockets to all bedrooms
- Wiring only for standard front door bell

## KITCHEN

- Modern moss green kitchen with Japandi timber cladding to peninsular island
- Integrated Bosch appliances - fridge/freezer, integrated dishwasher, integrated single oven, integrated combi microwave oven, warming drawer, electric hob and extractor
- Large lantern light to kitchen/living area
- Composite 1.5 sink / glass splashback to hob / under cabinet lighting
- Bosch washer/dryer to utility room
- Marble effect worktop to kitchen and utility

## FLOOR COVERINGS

- Floor tiling to Bathroom and Ensuities included
- Ground floor flooring included, all remaining rooms to receive customers own flooring

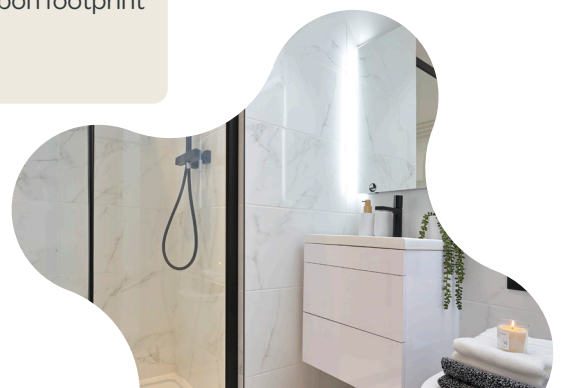
## BATHROOMS

- Bathroom - floor & wall tiling from Porcelenosa
- Full height wall tiling to shower, half tiling to bath & remaining walls
- Luxury white sanitaryware - chrome brassware and chrome towel rail
- House bathroom - Follow me shower, bath and screen
- Vanity unit
- Underfloor heating in both bathrooms
- Mirror power and shaver sockets to both bathrooms
- Ensuite - wall mounted shower and screen
- Full height tiling to en-suite



## EXTERNAL SPECIFICATION

- Built from natural stone
- Contemporary upvc windows finished externally in a colour
- Flagged terrace and paths in natural Indian stone flag
- Standard composite front door
- 16 Amp electric vehicle charging point
- Turf to garden
- PV roof panels for low carbon footprint and energy efficiency
- Electric garage door





# The Vivly Living way

Version 4 - April 2025

At the start of your journey, our friendly and experienced team warmly welcome you to our Customer Hub based at our Knowle Grange Development in Shepley. You'll be able to browse all we have to offer to make your dream home a reality. We are with you every step of the way.

Our Customer Experience Team would be happy to discuss any additional ideas that you may have, to make your home truly tailored.

Information contained in this brochure is for guidance only and does not constitute a contract, part of a contract or a warranty.

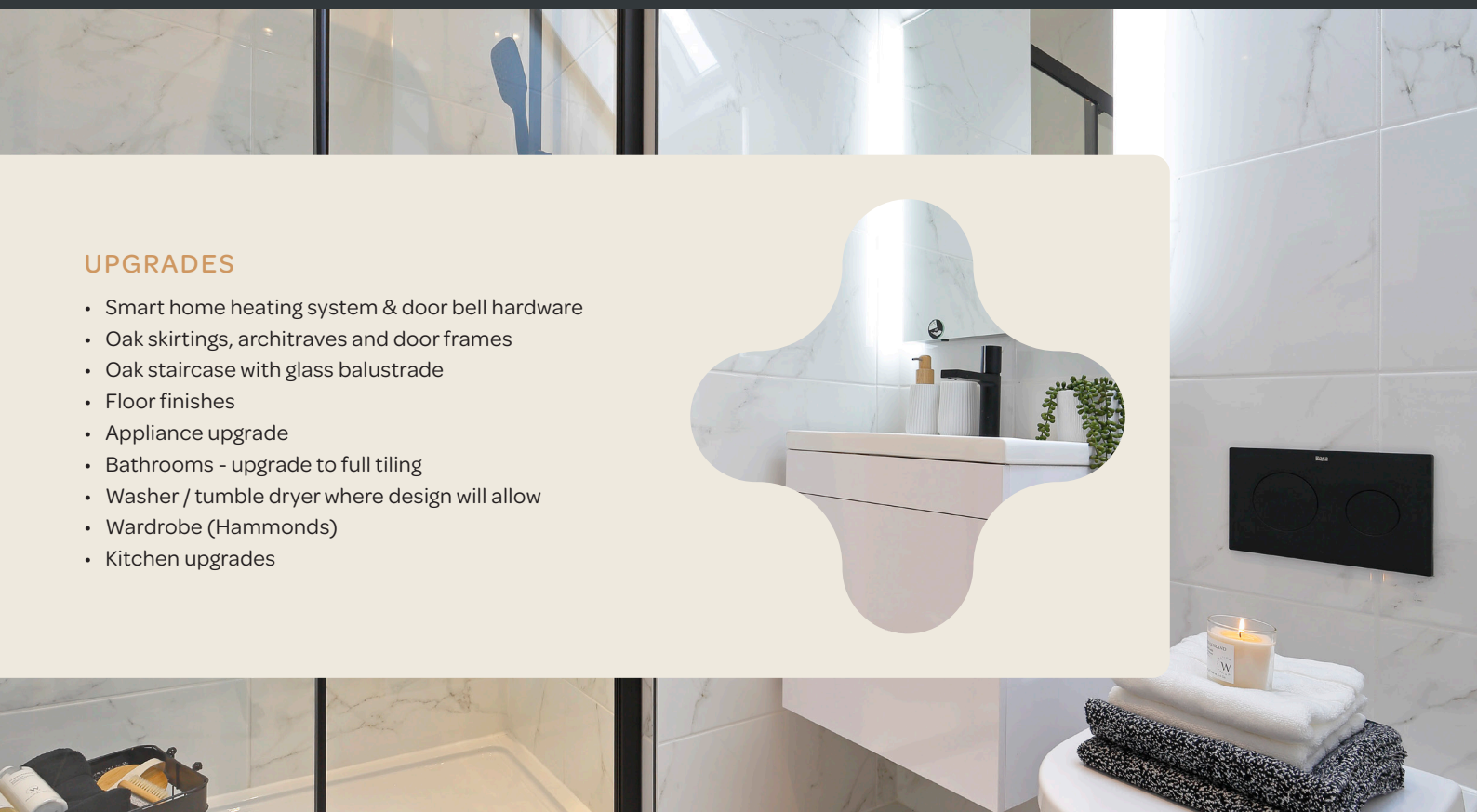
It should be noted that the representation of our developments, may not be accurate in every respect. Photography may not be of actual interiors. All plans shown are not to scale, measurements are for guidance only.

Computer generated images are for illustrative purposes only and individual features often vary from one plot to another. The specification of the houses is correct at the date of print but may be subject to change as necessary and without notice. These particulars should not be relied upon as accurately describing any of the specific matters described by an order under the Property Misdescriptions Act 1991 due to their forward nature.



## UPGRADES

- Smart home heating system & door bell hardware
- Oak skirtings, architraves and door frames
- Oak staircase with glass balustrade
- Floor finishes
- Appliance upgrade
- Bathrooms - upgrade to full tiling
- Washer / tumble dryer where design will allow
- Wardrobe (Hammonds)
- Kitchen upgrades





Call or visit one of our  
Customer Hubs

**01484 599454**

**Whistle Bell Court, Skelmanthorpe,  
HD8 9BA**

**Open Wednesday & Thursday**  
*10am - 4pm*

**The Willows, Denby Dale,  
HD8 8TS**

***Monday, Wednesday & Sunday***  
*10am-4pm*

Follow us on:



**WWW.VIVLYLIVING.COM**