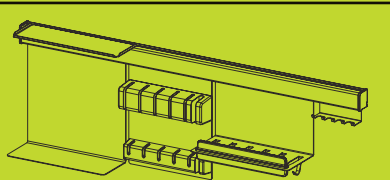


step 2

Follow these instructions to install your parts and accessories.



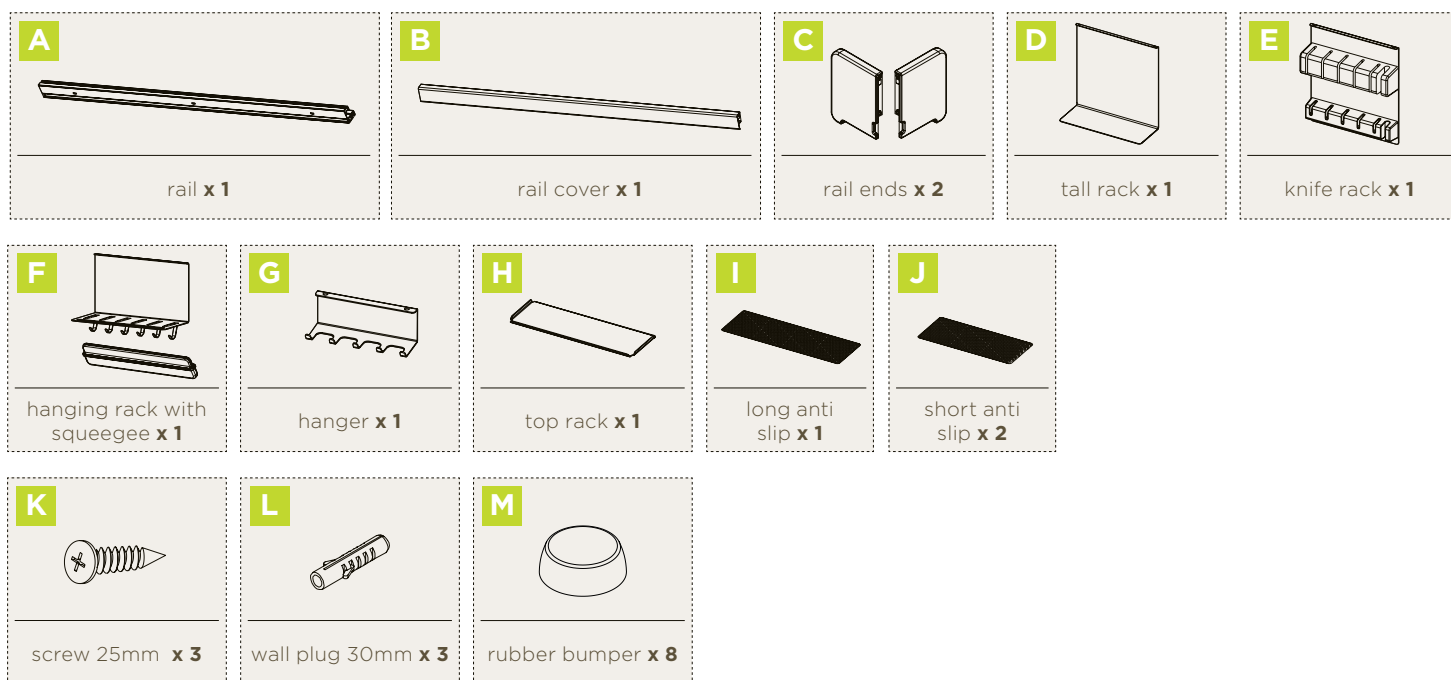
hanging kitchen storage - modern

installation guide

Things you need to know

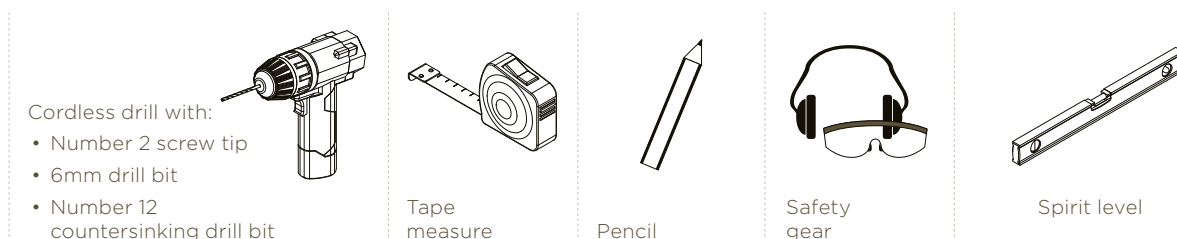
- The maximum load rating for this product is total 10kg.
- The maximum load of weight supported by this product will vary depending on the material of the wall where it is fixed to.
- Consider the wall material where you are installing the product. You may require different types of fixing parts.
- If you have any questions, contact us on:
Australia: **1800 666 078** Monday to Friday between 8:00am and 6:00pm AEST, New Zealand: **0800 522 663** Monday to Friday between 8:00am and 5:00pm NZST or email: **info@kaboodlegroup.com.au**.

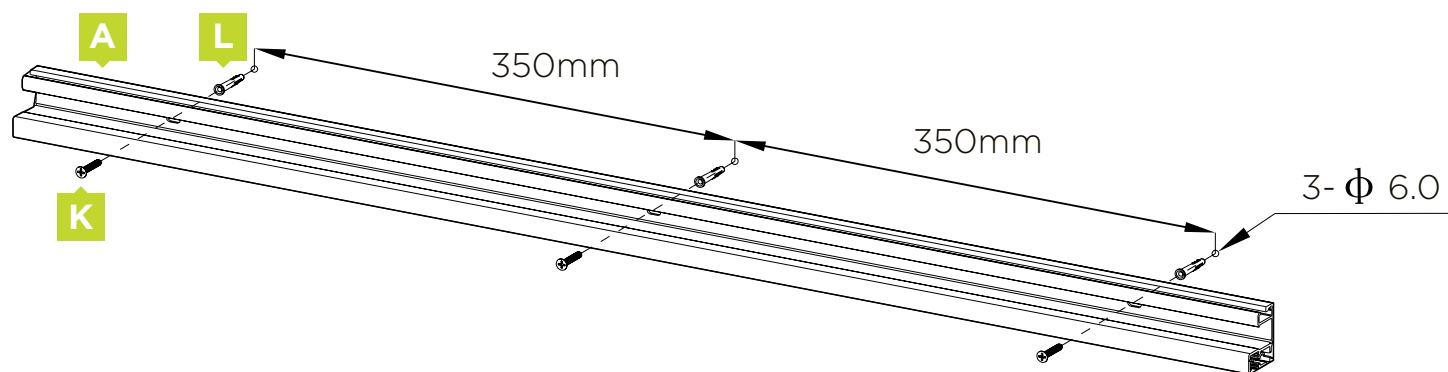
Hardware included



Tools you will need

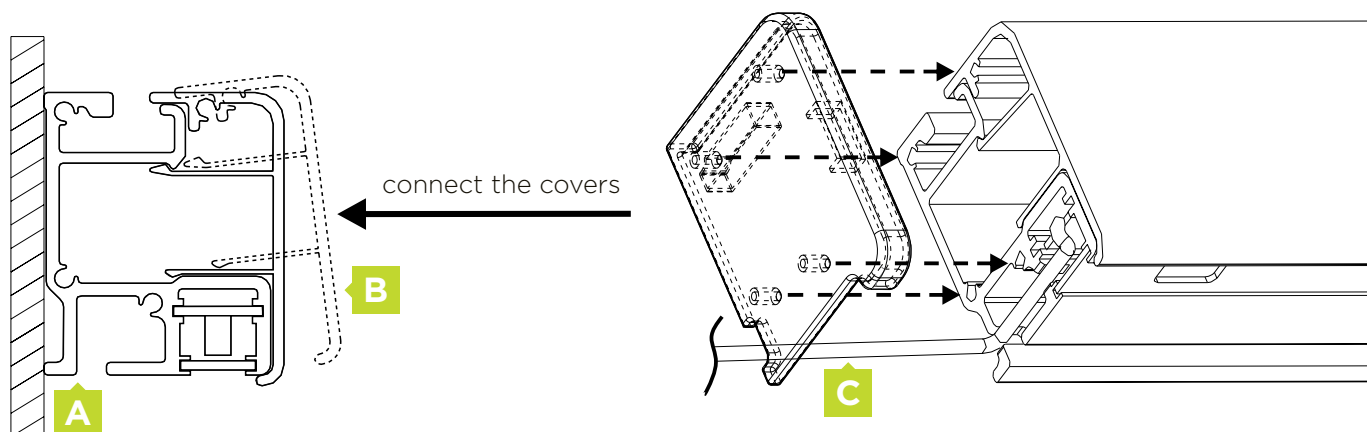
To put your kaboodle hanging kitchen storage together you will need the following tools.





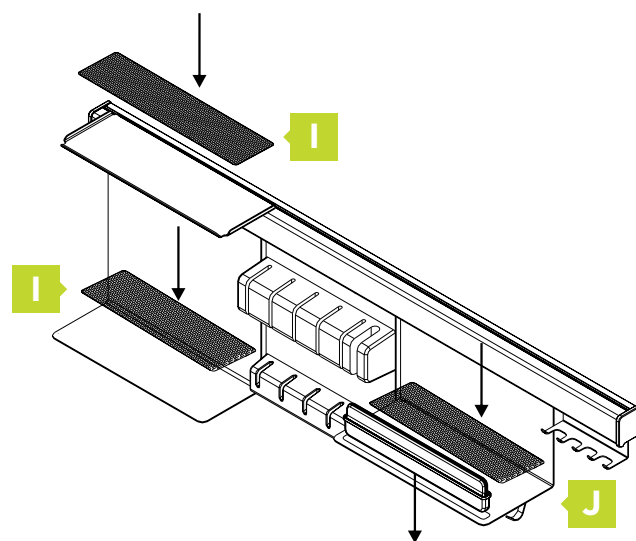
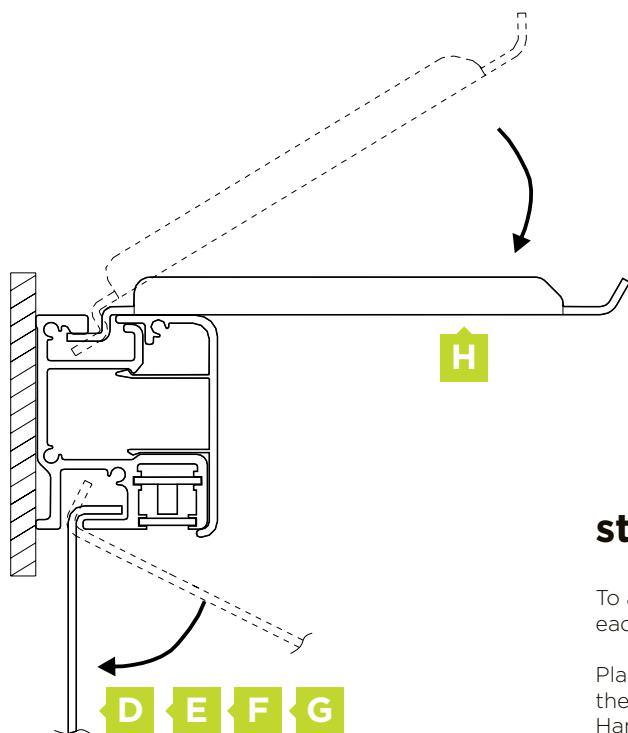
step 1.

Mark out three holes on the wall with 350mm in between. Using a 6mm drill bit, pre drill the marked out holes. Insert the 3 wall plugs into the holes and then screw the rail onto the wall using the 25mm x3 screws. Use the level to make sure rail is straight.



step 2.

Place the rail cover on top of the rail as per diagram. Place the rail end covers at the end.



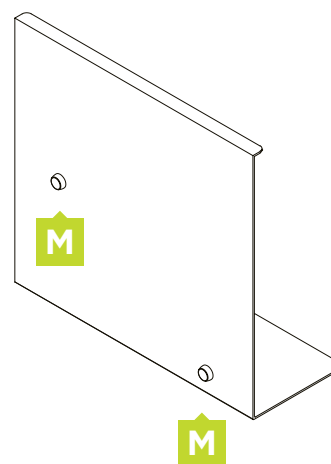
step 3.

To assemble the accessories insert the top of each part in the bottom of the rail.

Place the Long Anti slip in the top rack and the Short Anti slip x2 in the tall rack and the Hanging Rack with Squeegee accessory.

step 4.

Place two rubber bumpers each on accessory D,E,F and G. For "D" place one bumper in the middle left hand side and the other at the bottom right hand side.



Caring for your kaboodle parts and accessories

Looking after your cabinets is really easy and with the right care and maintenance they will last you for many years. Just follow these simple steps and if you need any more information you can contact us: Australia: **1800 666 078** Monday to Friday between 8:00am and 6:00pm AEST. New Zealand: **0800 522 663** Monday to Friday between 8:00am and 5:00pm NZST or email: info@kaboodlegroup.com.au.


Hinges, runners and other parts and accessories should be kept dry at all times.

To keep the mechanisms performing at their best, regularly wipe them with a dry cloth removing any dust and grime that may build up.

We offer a dedicated customer service line for advice or any questions you may have on kaboodle products.

Call customer service on:
Australia: **1800 666 078** Monday to Friday between 8.00am and 6.00pm AEST

New Zealand: **0800 522 663** Monday to Friday between 8.00am and 5.00pm NZST or email: info@kaboodlegroup.com.au

step 1		✓	Your cabinets are now assembled.		
step 4			step 2	✓	You've finished adding your parts and accessories.
Finish off your Kaboodle Kitchen by installing your benchtop.					
step 3		Next, follow the instructions to fit your doors and panels.			