

# step 2

## push to open door hinges

1 pair | W-50376

**made in Germany**

• 110° opening angle

• opens doors with a single touch

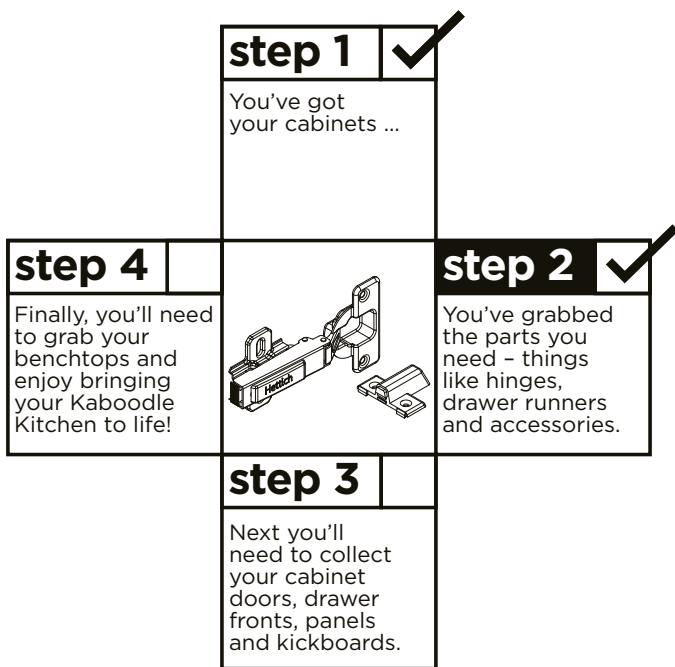
• all installation hardware included



**kaboodle**  
KITCHEN



**kaboodle**  
KITCHEN



We offer a dedicated customer service line for advice or any questions you may have on Kaboodle products.

Call customer service on **1800 666 078** Monday to Friday between 8:00am and 6:00pm AEST or email **info@kaboodlegroup.com.au**





For detailed instructions on assembly see on the inside.

**kaboodle.com.au**  
**kaboodle.co.nz**

\* Conditions for Lifetime Warranty:  
[www.kaboodle.com.au](http://www.kaboodle.com.au)



made in Germany

<p><b>A</b></p>  <p>Push to open hinges <b>x 2</b></p>	<p><b>B</b></p>  <p>push to open mechanism</p>	<p><b>C</b></p>  <p>16mm wood screws <b>x 12</b></p>	<p><b>D</b></p>  <p>adhesive plate <b>x 1</b></p>
--	--	--	---

## attaching push to open hinges to a door

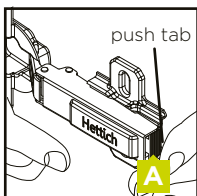
\* The benefits given by this express warranty are additional to other rights and remedies that you may have under law. Our goods come with guarantees that cannot be excluded under the Australian Consumer Law. You are entitled to a replacement or refund for a major failure and or compensation for any other reasonably foreseeable loss or damage. You are also entitled to have the goods repaired or replaced if the goods fail to be of acceptable quality and the failure does not amount to a major failure.

Technik für Möbel

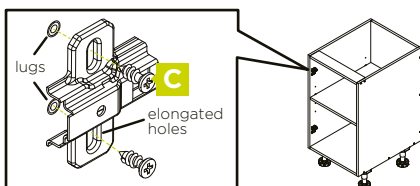


### 1. removing hinge plate

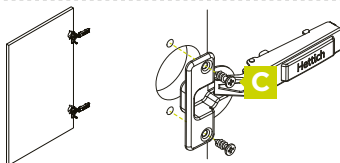
Remove the hinge from the hinge plate by pushing on the release tab.



### 2. attaching hinge plate to cabinet

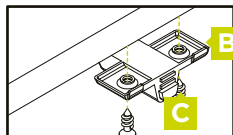


### 3. attaching hinge to door



### 4. attaching push to open mechanism to cabinet

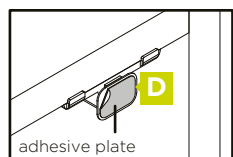
**base cabinet:** Install the mechanism on the top rail of the cabinet on the opposite side to where you placed the hinges. **wall cabinet:** Install the mechanism on the bottom shelf of the cabinet on the opposite side to where you placed the hinges. **pantry:** Install the mechanism on the middle shelf of the pantry on the opposite side to where you placed the hinges.



Mechanism should be installed at front of rail/shelf with front guide overhanging as shown in step 5 image. Mark and pre-drill before installing.

### 5. attaching self adhesive plate to push to open mechanism

Attach self adhesive plate to magnet on push to open mechanism. Peel self adhesive cover from plate.



### 6. attaching self adhesive plate to cabinet door

Close door and hold for 10 seconds. While holding door closed, apply pressure to location of the push to open mechanism.

Open door and check shelf adhesive plate has transferred to door. Repeat step if transfer has not occurred.

