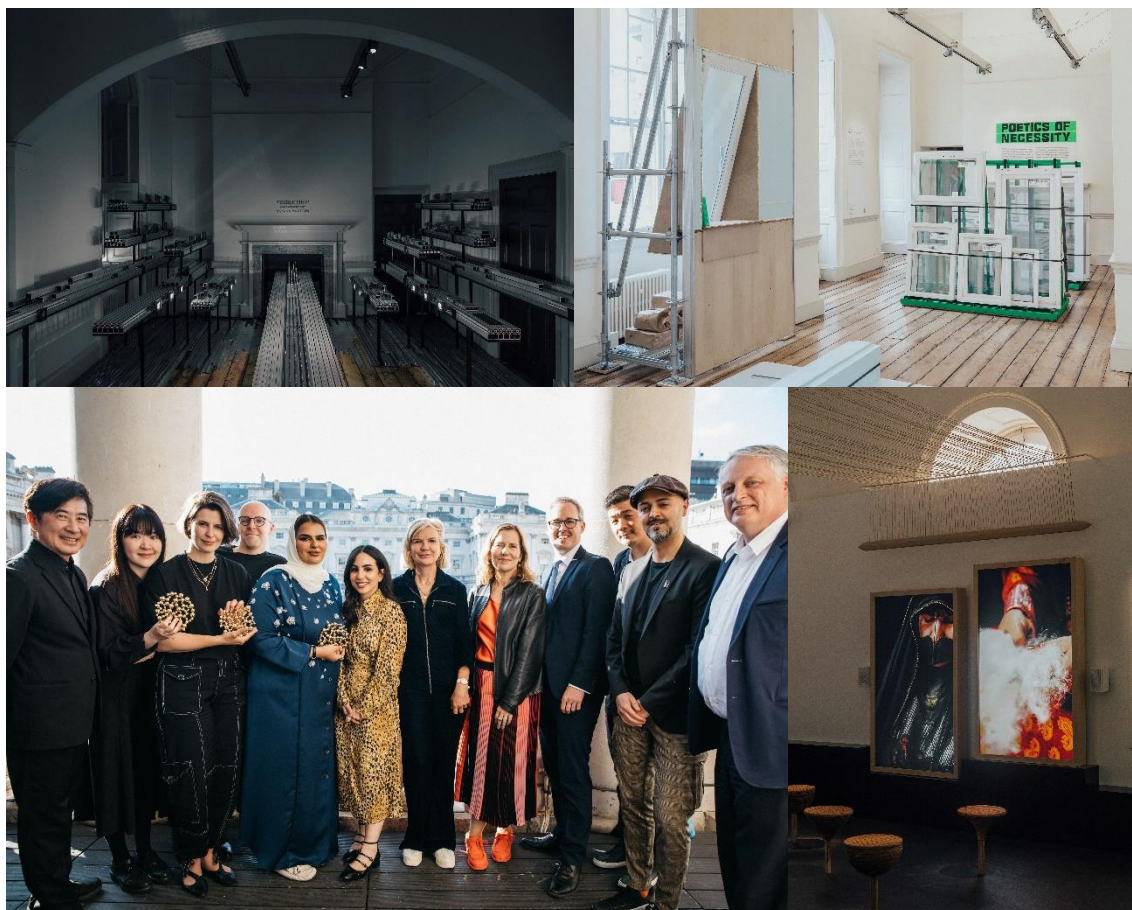


Taiwan, Abu Dhabi and Poland announced as winners of the London Design Biennale 2023 Medals



Clockwise from top left: Taiwan, *Visible Shop* (credit: Taran Wilkhu); Poland, *Poetics of Necessity* (credit: Taran Wilkhu); Abu Dhabi, *Formation of Soof* (credit: Taran Wilkhu); Medal winners with Victoria Broackes, Director of the Biennale; Paola Antonelli, Senior Curator of Architecture and Design, MoMA; Lord Parkinson of Whitley Bay, Parliamentary Under Secretary of State for Arts and Heritage and DCMS Lords Minister; Aric Chen, General and Artistic Director of the Nieuwe Instituut; Nader Faghihzadeh, Chief Designer, Avatr; Ben Evans, Executive Director, London Design Biennale, Director of London Design Festival (credit: Iona Wolff)

2 June 2023, Taiwan, Abu Dhabi and Poland have been awarded medals at the Medal Ceremony of the fourth edition of London Design Biennale, with the Netherlands receiving a special mention.

London Design Biennale brings together over 40 participants from around the world to showcase international collaboration. Through their work, exhibitors demonstrate an exchange of perspectives and solutions as well as the importance and impact design has on creating a better world. This year, exhibitors responded to the theme “The Global Game: Remapping Collaborations” set by the Artistic Director the Nieuwe Instituut, led by General and Artistic Director Aric Chen.

London Design Biennale presents four medals to the pavilions that have contributed the most exceptional installations to the Biennale. Introduced by Lord Parkinson of Whitley Bay, Parliamentary Under Secretary of State for Arts and Heritage and DCMS Lords Minister, three medals were awarded last night, selected by the International Jury. One medal will be awarded on 21 June, voted for by the public. The medals were designed by Shimmell and Madden and celebrate the Biennale’s tradition of cultural exchange and leading design solutions. This year’s Medal Ceremony is sponsored by Avatr.

The following three medals were awarded at last night's Medal Ceremony:

- **Taiwan** – 'Visible Shop' was awarded the **London Design Biennale Best Design Medal** for the most exceptional design.
- **Abu Dhabi** – 'Formation of Soof' was awarded the **London Design Biennale Theme Medal**, for the most inspiring interpretation of the theme.
- **Poland** – 'Poetics of Necessity' was awarded the **London Design Biennale 2023 Medal**, for the most outstanding overall contribution.
- **Netherlands** received a Special Mention for 'Out of Joint'.

Full details of the exhibits below. The Public Medal will be awarded on 21 June at the Somerset House's Morgan Stanley Late.

International Jury

Recipients of all medals, excluding the Public Medal, were selected by the London Design International Jury, which is made up of leading creative experts with a strong commitment to and appreciation for design.

Paola Antonelli, Senior Curator of Architecture & Design at The Museum of Modern Art; MoMA's founding Director of Research & Development

Rashid and Ahmed bin Shabib, Founders of Brownbook

Victoria Broackes, Director of London Design Biennale

Aric Chen, General and Artistic Director of Nieuwe Instituut

Es Devlin OBE, Artist and Designer

Nipa Doshi, Designer and Co-Founder of Doshi Levien

Ben Evans CBE, Executive Director of London Design Biennale and Director of London Design Festival

Marva Griffin Willshire, Founder and Curator of SaloneSatellite

Suhair Khan, Founder and Director of open-ended design

James Lingwood MBE, Associate Director of Artangel

Prof. Jeremy Myerson, Helen Hamlyn Chair of Design, Royal College of Art

Tosin Oshinowo, Founder and Principal Architect at cmDesign Atelier

Jonathan Reekie CBE, Director of Somerset House Trust

Dr. Christopher Turner, Keeper of Design, Architecture and Digital at the V&A Museum

Participants

Taiwan – Invisible Shop

Due to its unique geographical location and technological capabilities, Taiwan has become an important world trade hub and collaboration partner. For its presentation, it showcases collaborations the territory has across industry, trade, natural resources and economy.

Abu Dhabi – Formations of Soof

The traditional weaving technique of Al-Sadu will be at the centre of the Abu Dhabi pavilion. Practiced by Bedouin women in the United Arab Emirates, using the wool of sheep, camels and goats, this craft is architecturally fundamental to the building of traditional tent structures and was inscribed onto the UNESCO List of Intangible Cultural Heritage in Need of Urgent Safeguarding in 2011.

Poland – Poetics of Necessity

In times of need, urgency and uncertainty begin to enter the creative process, while architecture and design mix with social activism. Those are the days of change, adaptation and hope – new sources of creativity. The exhibition explores how unexpected everyday objects such as windows emerge from the world crisis, remapping collaborations.

Netherlands – Out of Joint

Viewing orientation itself as something that is constantly shifting, fragments of the Dutch installation will be distributed throughout Somerset House. Each fragment offers itself up to other pavilions and communal spaces as potential anchor points dispersed throughout the building.

London Design Biennale continues to 25 June at Somerset House

---Ends---

Contact

For further information please contact:

Brunswick Arts | Charlotte Sidwell, Tom Smeeton, and Sidje N'Choh

LDBpress@brunswickgroup.com

About London Design Biennale

Established in 2016 by Sir John Sorrell CBE and Ben Evans CBE, London Design Biennale promotes international collaboration and the global role of design. Since its inception the Biennale welcomes the world's most exciting and ambitious designers, innovators and cultural bodies to the capital.

The fourth edition of London Design Biennale will take place from 1 to 25 June 2023, artistically directed by the Nieuwe Instituut—the Dutch national museum and institute for architecture, design and digital culture. Taking over the entirety of Somerset House, including the Edmond J. Safra Fountain Court and River Terrace, participants from across the globe will be invited to imagine and enact new forms of international cooperation and participation—including with each other—through the medium of design.

London Design Biennale's International Advisory Committee and Jury includes: Paola Antonelli, Victoria Broackes, Aric Chen, Es Devlin OBE, Nipa Doshi, Ben Evans CBE, Marva Griffin Willshire, Suhair Khan, James Lingwood MBE, Prof. Jeremy Myerson, Tosin Oshinowo, Jonathan Reekie CBE, Rashid and Ahmed bin Shabib, Dr. Christopher Turner.

londondesignbiennale.com

About Somerset House

As the home of cultural innovators, Somerset House is a site of origination, with a cultural programme offering alternative perspectives on the biggest issues of our time. We are a place of joy and discovery, where everyone is invited to Step Inside and Think Outside.

From our historic site in the heart of London, we work globally across art, creativity, business, and non-profit, nurturing new talent, methods and technologies. Our resident community of creative enterprises, arts organisations, artists and makers, makes us a centre of ideas, with most of our programme home-grown.

We sit at the meeting point of artistic and social innovation, bringing worlds and minds together to create surprising and often magical results. Our spirit of constant curiosity and counter perspective is integral to our history and key to our future.

Somersethouse.org.uk