

POKETONE™

The all-rounder



HYOSUNG began developing polyketone (PK) in 2004. After 10 years of research and development, the material was successfully commercialised in 2014.

HYOSUNG CHEMICAL produces this tough, semi-crystalline thermoplastic under the POKETONE™ brand in Yongyeon, Ulsan, South Korea, with a capacity of 50,000 tonnes per year. Thanks to its special properties, polyketone can be used in a wide range of segments, including applications involving contact with drinking water and food.

Polyketone is an excellent addition to engineering plastics such as PA, POM and PBT. PK is becoming increasingly popular due to its exceptional properties.

Exceptional properties

High impact strength – POKETONE™ takes advantage of the flexible CO/olefin polymer matrix.

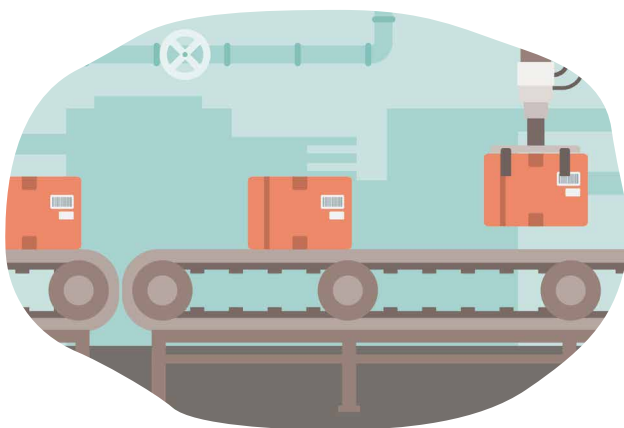
Hydrolytically stable – POKETONE™ is hydrolysis resistant. It hardly absorbs water and its technical properties remain at a high level.

High wear resistance and very good tribological properties – POKETONE™ has excellent wear resistance compared to other engineering polymers and reduces various noise problems.

Exceptional barrier effect – The gas and hydrocarbon barrier properties of POKETONE™ are outstanding and at the highest level compared to other polymeric materials.

Very good chemical resistance – POKETONE™ is highly resistant to "typical" automotive media, hydro-carbon solvents, salts and weak acids and alkalis.

Easy to process – POKETONE™ is characterised by short cycle times due to rapid crystallisation.



Free from the following pollutants

- Formaldehyde
- Per- and polyfluorinated alkyl compounds (PFAS)
- Bisphenol A (BPA)
- And other harmful substances

Has a low CO₂ footprint

- Global Warming Potential (GWP): 3.08 kg CO₂/kg

People. Think. Plastics.

We work with you to find the plastic solutions for your polyketone (PK) applications. Benefit from our technical application advice. We implement your requirements with the right material – including service and tailor-made logistics concepts.

Industries

POKETONE™ is an exceptional product which is predestined for applications in the fields of electrics & electronics, consumer goods, healthcare, mechanical engineering, vehicle construction and e-mobility.



Grades	Properties	Melt-Flow-Index 240 °C/2.16 kg ASTM D1238, ISO 1133	Colour	FDA*	NSF51	NSF61	EU 10/2011	KTW	WRAS	Burning behaviour UL 94	UL Yellow card E163907
Poketone unreinforced											
M330F	High-flow injection moulding grade	60 g/10 min, 56 ml/10 min	natural	✓	✓	✓	✓	✓	✓	HB (0.8/1.5/3.0 mm ALL)	✓
M630F	Extrusion grade, injection moulding grade	6 g/10 min, 5.6 ml/10min	natural	✓	✓	✓	✓	✓	✓	HB (0.8/3.0 mm ALL)	✓
M630F-UV**	Injection moulding grade, UV-stabilised	6 g/10 min, 5.6 ml/10min	natural	✓						HB (0.8/1.5/3.0 mm ALL)	✓
M63VX0A	Extrusion grade, injection moulding grade, UV-stabilised	4 g/10 min	black								
M730F	Extrusion grade	3 g/10 min, 2.8 ml/10 min	natural	✓	✓	✓	✓	✓	✓	HB (0.8 mm)	
M710F	Extrusion grade, film extrusion	3 g/10 min, 2.8 ml/10 min	natural	✓			✓			HB (0.8 mm)	
Poketone reinforced											
M33FG3A	Injection moulding grade, 15 % glass fibre	24 g/10 min, 22 ml/10 min	natural	✓		✓			✓		
M33AG6A	Injection moulding grade, 30 % glass fibre	14 g/10 min, 13 ml/10 min	black							HB (0.8/1.6/3.2 mm ALL)	✓
M33FG6A	Injection moulding grade, 30 % glass fibre	14 g/10 min, 13 ml/10 min	natural/black	✓		✓			✓	HB (0.8/1.5/3.0 mm ALL)	✓
M33FG6B	Injection moulding grade, 30 % glass fibre	14 g/10 min, 13 ml/10 min	natural	✓			✓			HB (0.8/1.5/3.0 mm ALL)	✓
Poketone flame-retardant											
M33AF2Y	High-flow injection moulding grade	34 g/10 min, 32 ml/10 min	natural/black	Contains no halogenated or red phosphorus-containing flame retardants and no PFAS						V-0 (0.8/1.6/3.0 mm ALL)	✓
M33AG2Y	Injection moulding grade, 5 % glass fibre	25 g/10 min, 23 ml/10 min	black							V-0 (0.8/1.6/3.0 mm ALL)	✓
M33AA2Y	Injection moulding grade, 30 % glass fibre	8 g/10 min, 5.4 ml/10 min	natural/black							V-0 (0.8/1.6/3.0 mm ALL)	✓
Poketone modified											
M33AS1A	Injection moulding grade modified with silocone	49 g/10 min, 46 ml/10 min	black	Anti-squeak and wear-resistant							

*Infant formula and human milk are excluded. **Old designation M630V

Further products and information on request

For special colour requirements, we offer not only a comprehensive masterbatch colour rangebut also individual product ideas through out sister company AF-COLOR, branch of AKRO-PLASTIC GmbH. Would you like to get to know AF-COLOR and its expertise? Join the discussion!

Disclaimer: Any details and recommendations as well as any data or information provided by K.D. Feddersen GmbH & Co. KG and is affiliated companies (hereinafter collectively "K.D. Feddersen") regarding individual products are based on investigations and statements by and information from the respective manufacturer. Unless contractually agreed otherwise, the information about the products distributed by K.D. Feddersen is non-binding. In particular, it does not constitute any guaranteed quality features. Unless agreed otherwise, K.D. Feddersen assumes no liability for the products being suitable for a certain application, utilisation, processing or any other use intended by the customer. In fact, the customer has to investigate itself whether and to which extent a product is suitable for the use intended by it and has to carry out all necessary investigations on its own responsibility. The customer is responsible itself for the utilisation, application and processing of the products. The products distributed by K.D. Feddersen may only be used for applications which are in compliance with all necessary approvals, applicable law and regulations, the instructions and specifications of the manufacturer of the products, particularly technical data sheets and product safety data sheets, as well as the rights of third parties. This information is for internal use only. Publication or transfer to third parties is prohibited without the consent of K.D. Feddersen is not permitted.