



Manual / 3092000700 / - 01

## **XLC MONO KIDS TRAILER BS-C09**



### **ATTENTION**



Owner's Manual

Please keep this Owner's Manual for future reference.

PRIOR TO ASSEMBLY Please read this Owner's Manual completely before assembling or operating this product.

This product should be assembled by an adult. IMPORTANT SAFETY INFORMATION

### **MEETS ASTM /ENSTANDARDS**

F1975-09/ EN 15918 Bicycle Trailer Designed for Human Passengers


F833-13b/EN 1888-2:2018 Safety Performance Specifications for Carriages and Strollers

WARNING

ATTENTION

Please read the operating instructions and all safety warning signs carefully before using the trailer. Failure to observe these warnings and assembly instructions may result in serious injury or death!


- Before riding, check that all parts are mounted according to the manufacturer’s instructions.
- Use a foot pump or a hand pump to inflate the tyres! Pressurised air hoses can lead to overpressure.
- Regularly check all fastening elements for tight fit.

 **Child weight: max. 22kg**  
**Total weight: 51kg (Trailer weight + Loading)**  
**Loading: 35kg (1 Child + Luggage)**

- Do not use the trailer if it is damaged!
- This seat unit is not suitable for children under 6 months. Children must be able to hold their head under their own power with a helmet on.
- The use of the seat belt is mandatory.
- Maximum height of the passenger 1.05 m
- Always instruct children NOT to swing, bounce or lean.
- Never leave the child unattended or playing with this product.
- To prevent injury, make sure your child is kept away when unfolding and folding the product.
- Make sure all locking devices are engaged before use.
- Always use the parking brake.
- Always drive carefully.
- The maximum speed must not exceed 25 KM/H, slower on bends or uneven roads.
- Braking distances increase when towing the trailer. Slow down and allow for extra braking distance.
- Drive the trailer only on clean and paved roads.
- NEVER use the trailer off-road. This may cause damage to the trailer and serious injury to the occupants.
- Do not use the trailer in extreme weather conditions, such as heat, cold, wind or rain.
- Passengers must be dressed appropriately for the prevailing weather conditions.
- Any load attached to the handle and/or the back of the seatback and/or the sides of the vehicle will affect the stability of the vehicle.
- Before use, make sure that the seat unit or the fastening devices are properly engaged.

INSTRUCTIONS FOR ASSEMBLY AND OPERATION

1. Key Features
2. Pre-Ride Safety Check
3. Safety Guidelines
4. Main Frame and Cabin Assembly
5. Installing Wheels
6. Installing Tow Arm
7. Using Parking Brake
8. Installing Wheel Guards
9. Using Top Cover/Windscreen
10. Installing Safety Flag
11. Using Five-point Harness
12. Unloading Trailer
13. Folding
14. Storage
15. Attaching Trailer to Bicycle
16. Attaching Light Sets
17. Attaching Jogger Wheel
18. Attaching Stroller Wheel
19. Suspension Set up
20. Feature for Cable Lock

 Please Read all instructions and examine contents carefully before assembly.  
**Important – Keep these instructions for future reference**

## 1. KEY FEATURES

1. Quick Assembly, take down and storage
2. Forward facing one passenger seating
3. Five-point seating harness with quick lock and release
4. Full rain cover with roll-up window
5. Quick release wheels with sealed bearings

### IMPORTANT

Passengers and riders should always wear properly fitted, approved cycling helmets. In some countries, helmets are a legal requirement.

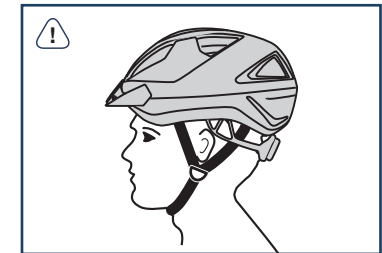
## SAFE TOWING TIPS

Pulling this trailer changes the way the bicycle rides. Stopping, starting and steering will be affected depending on the weight of the load. To familiarise yourself with the changes, load the trailer completely and practice in a safe area. Do not use your trailer until you are used to the effects on your bike. Other safety strategies:

- Make sure your bicycle brakes are working! The braking distance increases when towing the trailer.
- The trailer is very wide. Make sure you keep extra distance from kerbs, signs, parked cars and other obstacles!
- A bicycle with a trailer requires a large turning radius. Do not turn sharply!
- Assume that you will be given the right of way.
- Try to anticipate the behaviour of motorists.
- Do not ride on motorways, busy roads or in areas that are unsafe for cyclists.
- Avoid riding at night. If you must ride at night, use lights and bright, reflective clothing. Do not ride at night with children in the trailer. Check with local authorities for appropriate lighting and safety requirements before using the trailer to comply with traffic laws.
- Never remove the protective bonnet when towing children in the trailer!
- Always use the safety flag when towing this trailer!
- Do not drive over kerbs! Avoid bumps and holes!
- Not suitable for use at high speeds! Do not exceed 25 km/h.
- Attach a rear view mirror to your bicycle to keep an eye on the children in the trailer!
- Never ride the trailer off the road. It is designed for use on paved roads. Off-road use may cause damage to the trailer or injury to the occupants.

## 2. PRE-RIDE SAFETY CHECK

1. Check to insure hitch clamp is tight
2. Check to insure hitch safety strap is secure
3. BUCKLE UP! Check seat harness and secure all baggage
4. Inspect bike and trailer condition before each use
5. HELMETS ON! Insure rider and child helmets are on and secure
6. Check tire air pressure. Always maintain between 35 and 40 PSI
7. The bicycle to which the trailer will be attached should be inspected by a qualified bicycle mechanic before attaching the trailer to it.
8. Dress children appropriately to prevent them from cooling down or overheating during the ride.



## 3. SAFETY GUIDELINES

Check the condition of the bicycle and trailer before each use. If you discover defective components, incorrect settings or missing parts, rectify the problem before use.

Please observe these safety guidelines when using your trailer:

- This trailer is intended only for transporting children and cargo in the manner described on the following pages of the instruction manual. Use of the trailer other than in accordance with these guidelines is not recommended and may result in injury or damage to the trailer or the bicycle.
- Check the trailer and its parts before and after each use. Proper maintenance of the trailer is essential for safety.
- When assembling the trailer, make sure that the wheels are correctly mounted according to the instructions. If you are unfamiliar with the type of wheels used on this trailer, contact your dealer or a reputable bicycle shop for instruction on the correct operation of these devices. Use only tyres with road tread.
- Make sure that the bicycle you are using with the trailer is in good condition, is the right size and type to tow the bicycle trailer and has good brakes. Refer to the owner's manual of the bicycle if you need instructions on how to use the bicycle with a trailer. A bicycle repair shop can help you with an inspection to determine if your bicycle is suitable for use with the trailer, as well as routine maintenance of the bicycle and the trailer.
- Do not overload the trailer.
- Position the load as low as possible and centre it in the trailer (front to back and left to right). Additional equipment should be moved to the rear.

- Bicycle trailers towed by Pedelec/ EPAC (Electronically Power Assisted Cycles) may be restricted by law.
- Please check national and local laws regarding the use of a Pedelec/ EPAC to tow a trailer.
- All cargo should be secured so that it cannot shift. IMPORTANT: Instruct children riding in the trailer not to wobble, sway or lean. Such movements can cause the trailer to tilt or tip over.
- When fully loaded, the drawbar load measured on the hitch should be between 3-8 kg.
- Do not attempt to install other seating systems in this trailer. It is not designed for car seats, pram seats, cots or other seating. The use of non-original accessories will invalidate the warranty and may cause damage to the trailer or injury to the occupants. Only spare parts supplied or recommended by the manufacturer/dealer may be used.



Follow the instructions for adjustment. The four-season guard must be fitted when there are children in the trailer. This protects the child from road dirt.

4. MAIN CABIN FRAME AND ASSEMBLY

Take the trailer, the wheels, the drawbar and the walking kit out of the box. Put the small wheel of the walking kit aside as you will assemble it later. Place the trailer on the ground with the black fabric side down.

PARTS LIST

- 1 Frame w/canopy
- 1 Sling seat with 5-point safety harness
- 2 20" alloy wheels
- 1 Safety flag
- 1 Adjustable handlebar
- 1 Tow bar, tow bar coupler





**To open frame**, first, lift front cabin tube up, place one hand on upper crossbar to stabilize frame, and then pull back with a quick “snap” of force on rear cabin tube (Fig 1), until you hear the audible “Click” as both sides of the trailer frame lock in place (Fig 2).



Fig 1



Fig 2

After open, the trailer frame, look inside the trailer at the folding latches on both sides to make certain they have locked in place. See photos below for reference:



If the latches look like the “WRONG!!” photo above, the trailer is not locked correctly. Pull back on the tube until the latch locks in place as in the “RIGHT” photo above, or pull the string like shown on right picture.

⚠ You must make certain the frame is locked before using the trailer. Failure to do so could result in serious injury to you or your child. Make sure the spring latches are engaged on both sides prior to use. Both latches are necessary for safe operation. Press forward on the rear frame tube to make sure the frame is locked. If the frame moves forward as to fold, the frame is not secure. If not latched, repeat above, pulling with some force until the frame locks with an audible “Click”.

**To close/fold trailer frame**, press handles together on right and left side. In case the handles are hard to press you can help out by pulling the string while pressing the handle.



## 5. INSTALLING WHEELS

Your XLC Mono Kids Trailer uses simple and convenient push button quick-release wheels. To install the wheel, first push the button on the outside of the wheel hub, and insert the axle through the hanger bracket on the frame as shown. Push all the way in and release the pushbutton. The wheel is automatically locked in place. Give each wheel a tug to make sure they are secure.



⚠ Check the wheels periodically during and before each use to be sure they have not become loose. Failure to do so could result in serious injury to you or your child.



## 6. INSTALLING TOW ARM

Locate the tow/hitch arm, and position on the left side of the trailer, as shown. The hitch arm is held in place by a spring pin and a quick release pin.



Depress the spring pin and insert the hitch arm in the bracket on the frame as shown.

Once the spring pin locks in place in the hole in the bracket. Locate the quick release pin, attached by nylon strap to the trailer frame, then insert the pin through the bracket and into the hole in the tow arm. The pin should go completely through the tow arm and bracket. Once the pin is through, flip the safety clasp over and onto the pin. Give the pin a tug to be sure it is secure.

⚠ Check this pin periodically during and before each use to be sure it has not become loose. Failure to do so could result in serious injury to you or your child.

## 7. USING PARKING BRAKE

The trailer has a foot-operated parking brake for use when in stroller/jogger mode.

### PARKING BRAKE OPERATION

To operate brake, simply put your foot on link brake and push down, then it locked, and put your foot under link brake and raise up to unlock your brake.



Make certain link brake is released prior to riding.

## 8. INSTALLING WHEEL GUARD

Your XLC MONO KIDS TRAILER is equipped with a wheel guard for added safety. The wheel guard helps to deflect the tire from obstructions that might stop the trailer and result in an accident.



### INSTALLING THE WHEEL GUARD

Slide wheel guard over fixation until you here a click.





## 9. USING TOP COVER/WINDSCREEN

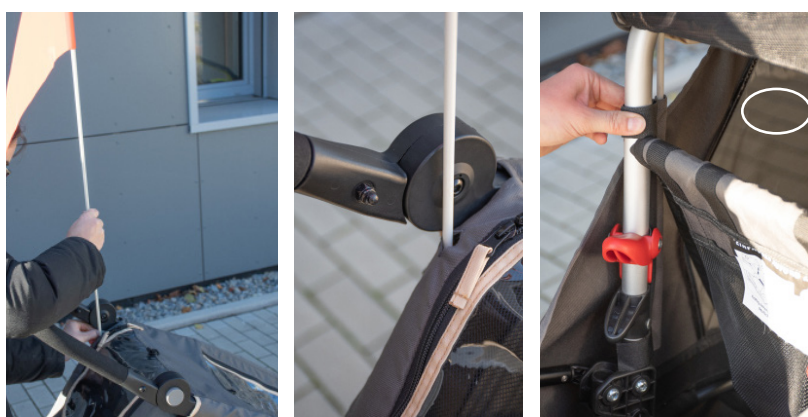
The clear vinyl windscreen and the protective mesh barrier zip open for loading. In inclement weather, the clear windscreen protects your passengers from the elements. Weather permitting, you can roll up the clear window and affix with Velcro straps provided. The mesh allows ventilation, but prevents debris from entering the trailer.



⚠ Rocks and castoff from the bicycle wheels could injure your child. Never use the trailer without closing the mesh cover. Failure to do so could result in serious injury to your child.

## 10. INSTALLING SAFETY FLAG

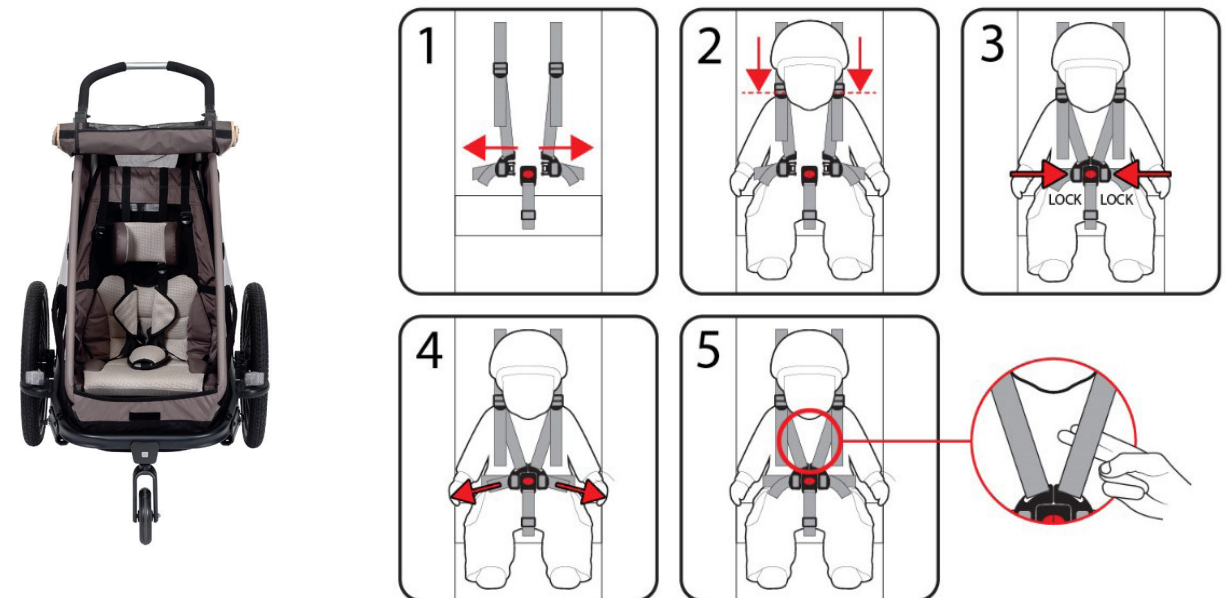
Assemble the flag and insert the end into the small button hole on the top of the trailer skin. Feed through to the sleeve just inside the rear cabin, adjacent to the frame tube.



⚠ This flag is meant for use only with the trailer. This flag is not a toy. Do not let your child play with this flag when not in use. Failure to comply with this warning could result in serious injury of your child.

## 11. USING FIVE-POINT HARNESS

Unclip the straps and place your child in the seat (Fig1). Adjust the upper buckles to fit snugly above your child's shoulders (Fig2). The crotch strap buckle should come just below your child's belly button, where a normal belt could lay. Adjust the ladder lock so the buckle is in the correct position. Buckle the two side straps (Fig3) to the crotch strap and adjust snugly (Fig4) so you can fit average size fingers between belt and your child (Fig 5).



The buckle should be centered in your child's abdomen. Hook the shoulder straps to the D-rings on the buckle and adjust the ladder locks so they fit snugly.

### OPEN THE BUCKLE:

slide grip to right, and hold the grip while removing the two straps on the top. See pictures below.





CLOSE THE BUCKLE:  
snapping in the two straps on the top. No need to touch the grip. See pictures below.



⚠ To avoid serious injury or death, children must always wear the seat belt and shoulder straps.

12. UNLOADING TRAILER

Before removing children or cargo from the trailer, stop the bicycle, and lock the trailer parking brakes on both wheels. Then open the passenger compartment window, release the safety harness, and allow the passengers to exit the trailer. Take care the bicycle attached to the trailer does not fall over during loading or unloading.



13. FOLDING

To fold your trailer, simply open the rear compartment flap and locate the release latches on the vertical frame tubes. To operate the latches, simply grab the handles on both sides, and squeeze simultaneously to unlock frame. While holding the latches, push forward to fold. TIP: A quick forward snap of the wrist will suffice to fold the frame – alternatively, a slight “nudge” with a knee on the rear basket frame cross-tube works as well.



The trailer can be folded with or without the wheels on. If the wheels are removed, they can be stowed inside the trailer when not in use. To remove the wheels, simply push the button in the wheel, and pull the wheel out from the frame. To remove the handlebar, simply depress the spring pin in the upper frame and pull the handlebar off. TIP: Quickest way to remove is one side at a time. Depress the spring pin on one side, then pull slightly until handlebar moves a bit over the release pin, then do same on other side. Finally, pull the handlebar away from the trailer is a slight right-to-left rocking motion to release the handlebar.



14. STORAGE

The trailer has a rear storage area. This is not intended for items weighing more than **5 kg**.



⚠ Distribute items carefully and evenly. Items may cause the trailer to become unstable. Failure to comply with this warning could result in serious injury to your child.

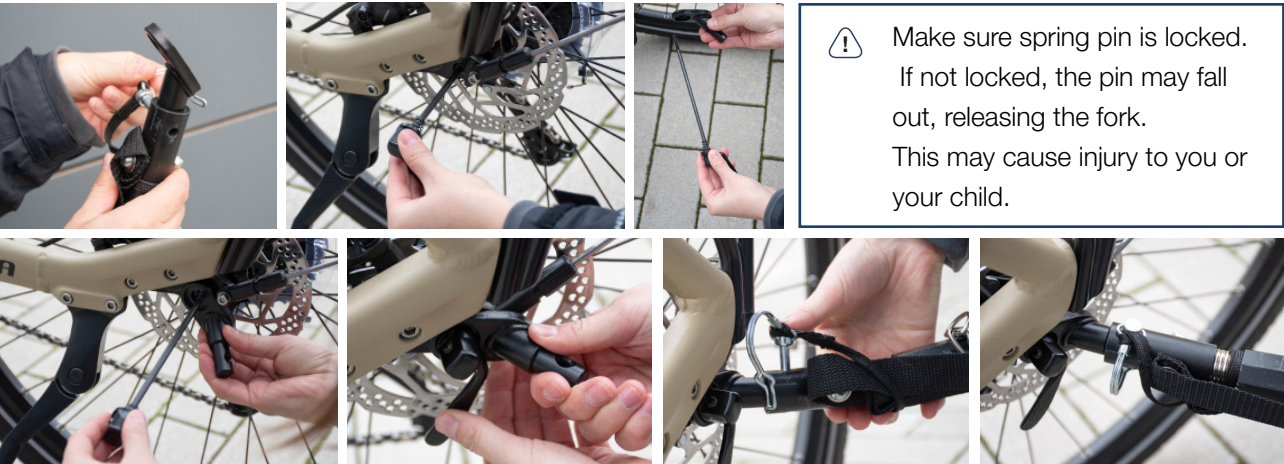
15. ATTACHING TRAILER TO BICYCLE

Your trailer is designed to attach easily to just about any full-size bicycle. The hitch fitting must be attached to the rear axle of the bike.

Do not attach to any cycle where it cannot attach to the axle. It is recommended that the bicycle(s) to which the trailer will be attached undergo a safety check by a qualified bicycle mechanic before attaching the trailer to it.



1. Loosen left side rear axle to allow the hitch to attach to frame.
2. Position hitch over left rear axle of bicycle frame.
3. Tighten axle nut (Quick Release) securely, testing to see the hitch is unable to pull loose.
4. Secure Quick Release Pin on hitch arm.



Removal of Trailer

1. Remove QR snap pin from hitch connection
2. Pull trailer arm away from black hitch
3. Black hitch attached to axle can remain with the bicycle for easy reattachment.

Trailer Maintenance

Your trailer will give you many years of service with minimal care. To ensure safe and dependable operation, we recommend the following regular maintenance:

- ⚠ **Before each ride**
- Check all fasteners to make sure they are tight. Tighten or replace if needed
  - Check to make sure wheels are fully secure in the frame. Wheels must be fully inserted to lock in place, Attempt to pull the wheel out without pushing the release button. Wheel should not move.
  - Check tires for wear and proper inflation as listed on tire sidewall. Use only hand operated pump to avoid tire damage. Under inflation or over inflation can result in unsafe handling.
  - Double check hitch attachment, making sure QR pin is locked, and safety strap is in place.
  - Check harness straps for wear, and make sure buckles lock properly

Annual check-up

- Once a year, or sooner if needed, have the trailer inspected by a qualified bicycle mechanic for signs of wear or needed adjustment.

As needed

- Trailer can be cleaned with mild detergent and water. Do not remove the seat or cover for washing. Do not use harsh chemicals or cleaners, as they may damage the fabrics or the frame materials or surfaces.



## 16. ATTACHING LIGHTSETS

It is not recommended to use your trailer at night. Your trailer is equipped with reflectors and a safety flag for maximum visibility during low-light conditions, but if you plan to ride at night, you should install an approved lightset. The lightset should mount to the frame of the trailer, and be visible from front and rear sides. Your bicycle dealer can recommend the appropriate lightset to comply with your local lighting regulations.

⚠ Never ride with your trailer at night without an approved lightset.



## 17. ATTACHING JOGGER WHEEL

Your trailer can accept an optional jogger kit. If not included with your trailer at time of purchase, please contact your retailer for more information on how to purchase this accessory.

The kit consists of 2 fork tubes, and a quick release 16 inch wheel.



⚠ Plastic bags could cause suffocation. Plastic bags are not a toy; dispose of them properly.



To install the jogger kit, first remove the hitch arm by releasing opening and releasing the (Quick Release) QR pin, then press the spring pin and pull out the arm. Also remove the pin on the opposite side clamp. Next take one jogger arm, insert into the aluminum bracket, align with the fixing hole and insert and lock the spring pin. (Make sure the hooks show to the ground.) Do the same with the second jogger arm. Fix the two jogger arms together with the two screws.

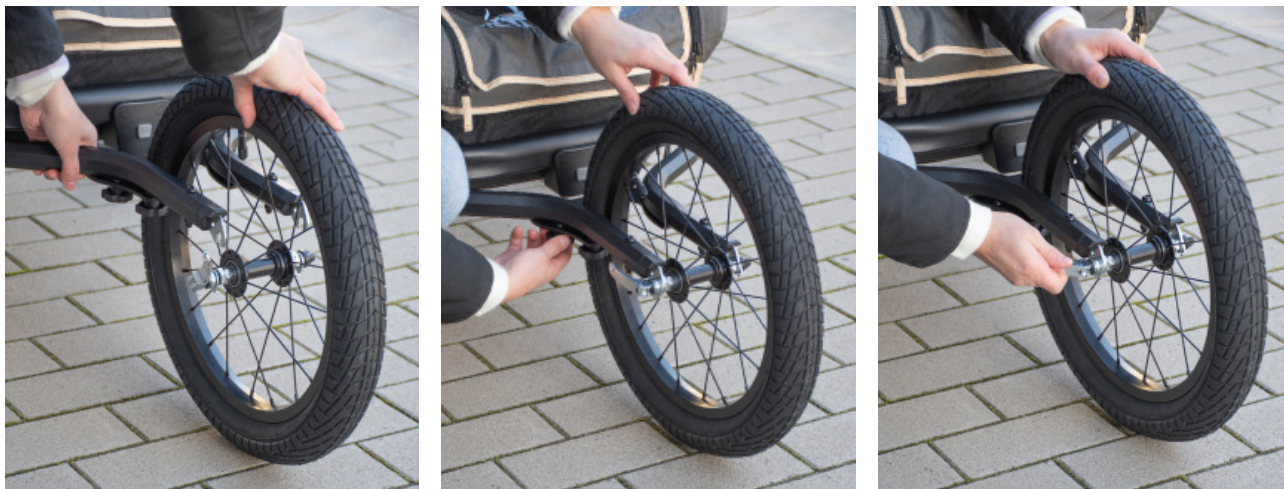


⚠ Make sure spring pin is locked.  
If not locked, the pin may fall out, releasing the fork.  
This may cause injury to you or your child.





Next, install wheel as shown. Open the quick release axle skewer to allow the axle to fit inside the metal fork tips. Fit the hook in the align the flats on the axle with the flats on the fork tips, and slide into the slots. Fit the hook of the safety tab in the hole in the fork tip, then close the QR lever, making sure it is tight. If the wheel is still loose in the frame, open the release lever, tighten the thumb nut, and close the lever again. Repeat this until there is sufficient resistance to securely lock the wheel. Note: Do not remove the safety washer from the axle. Failure to use the safety lock washer may result in the front wheel falling out. If lost or damaged, contact your place of purchase or a bicycle dealer to purchase a replacement.



## 18. ATTACHING STROLLER WHEEL

Your trailer has a convenient front swivel stroller wheel for use in shopping, at the park, or in situations where the jogger kit may not be appropriate due to lack of maneuverability. The swivel wheel attaches to a mount in the center front of the frame. To install the wheel, simply insert the stroller wheel in the receiver and push until it "Clicks" into place.

To remove the wheel, simply depress the button on the housing to release the wheel.



## 19. SUSPENSION SET UP

Your trailer is equipped with a suspension for comfortable rides. You can find it on the right side of the trailer. The suspension can be individually adapted. Three setups can be chosen by turning the handle shown like below.



## 20. FEATURE FOR CABLE LOCK

In case you want to leave the trailer unattended for a while you have the feature to fix a cable lock (not included) directly through the frame of the trailer.

