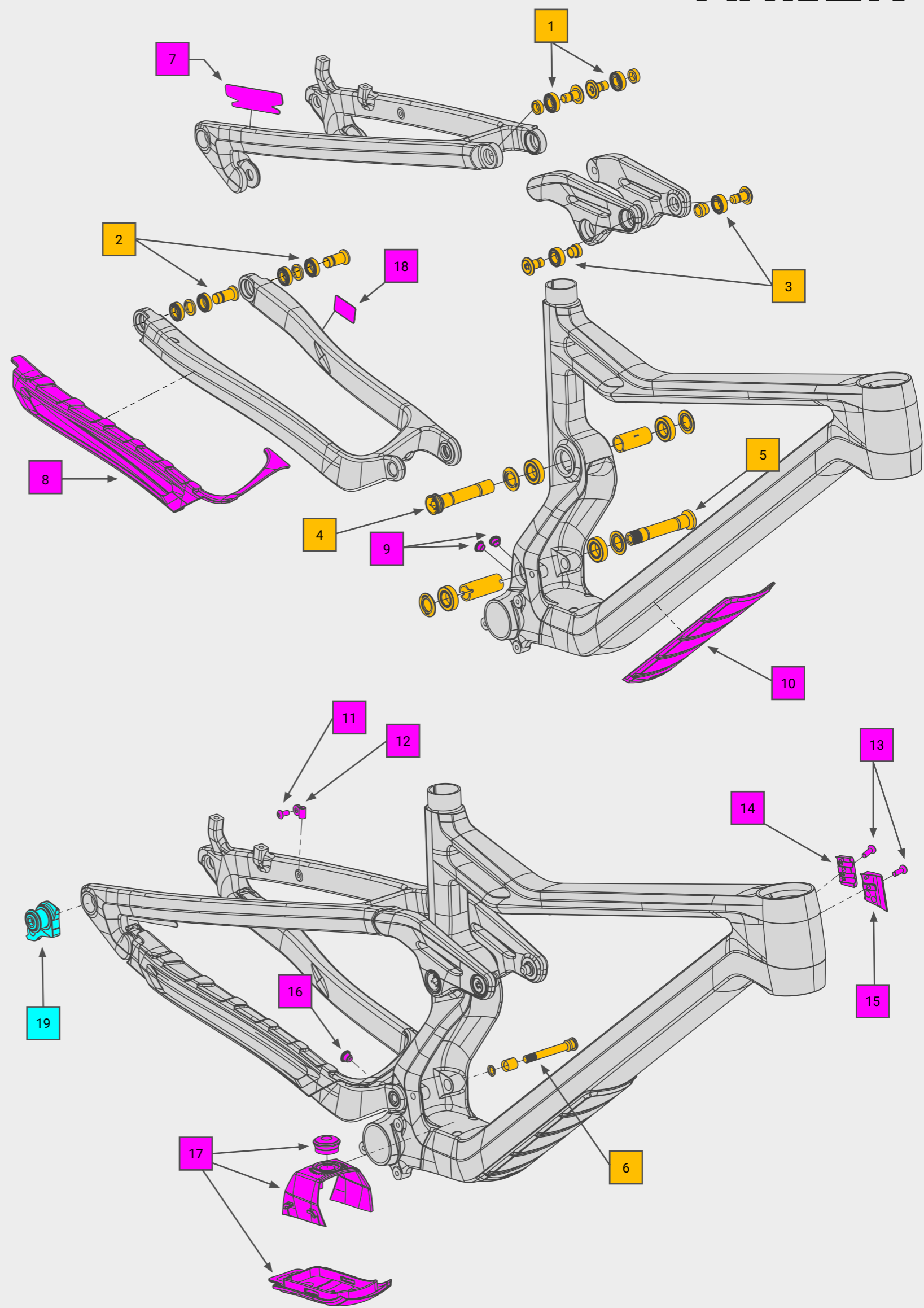


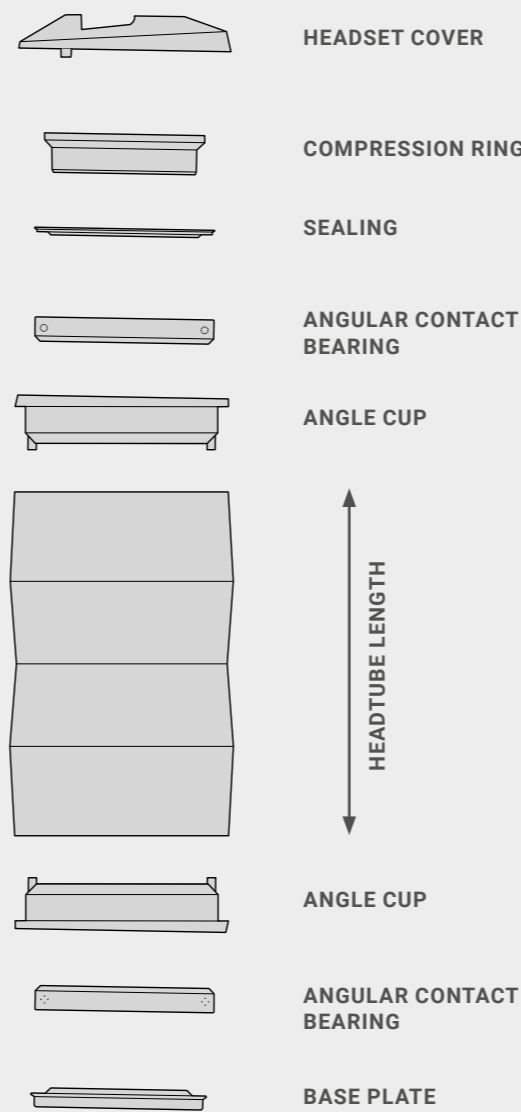
NO.	QTY.	ITEM NO.	DESCRIPTION
1	1	8572	LINKAGE/SEAT STAY BEARING SET BEARING DIMENSIONS: 2 X 6900 2RS
2	1	10411	HORSTLINK BEARING SET BEARING DIMENSIONS: 4 X 6801 2RS MAX E
3	1	10416	LINKAGE BEARING SET BEARING DIMENSIONS: 2 X 6001 2RS
4	1	10431	ROCK MOUNT BEARING SET BEARING DIMENSIONS: 2 X 6902 2RS1
5	1	10430	MAIN BEARING SET BEARING DIMENSIONS: 2 X 6902 2RS1
6	1	3920	BOLT FOR SHOCKMOUNT
7	1	3669	SEATSTAY PROTECTION STICKER JAB RIGHT
8	1	4228	PROTECTION FOR CHAINSTAY
9	2	3740	PLUGS FOR INNER CABLE ROUTING
10	1	4229	DOWN TUBE PROTECTION
11	1	3588	SCREW ISO 7380-1 M5X10 A2 HEX 3 BLACK
12	1	33936	CABLE GUIDE
13	1	3164	SCREW ISO 10642 M5X16 A2 HEX 3 BLACK
14	1	3589	CABLE BUSHING <small>(FOR INTERNAL CABLE ROUTING FROM OUTSIDE OF THE FRAME)</small>
15	1	4144	CABLE BUSHING COVER <small>(FOR INTERNAL HEADSET)</small>
16	1	3814	CLOSING PLUG <small>(FOR ELECTRONIC SHIFTING SYSTEM)</small>
17	1	4236	STORAGE BOX
18	1	4289	CHAINSTAY PROTECTION STICKER LEFT
19	1	20076315	SRAM UDH UNIVERSAL ALUMINIUM DERAILLEUR HANGER
20	1	20144346	310.52.755S-HT95
21	1	20144346	310.52.755S-HT105-AM
22	1	20144346	310.52.755S-HT115-AM
23	1	20144346	310.52.755S-HT135-AM

OPTIONAL



## TECHNICAL SPECIFICATIONS

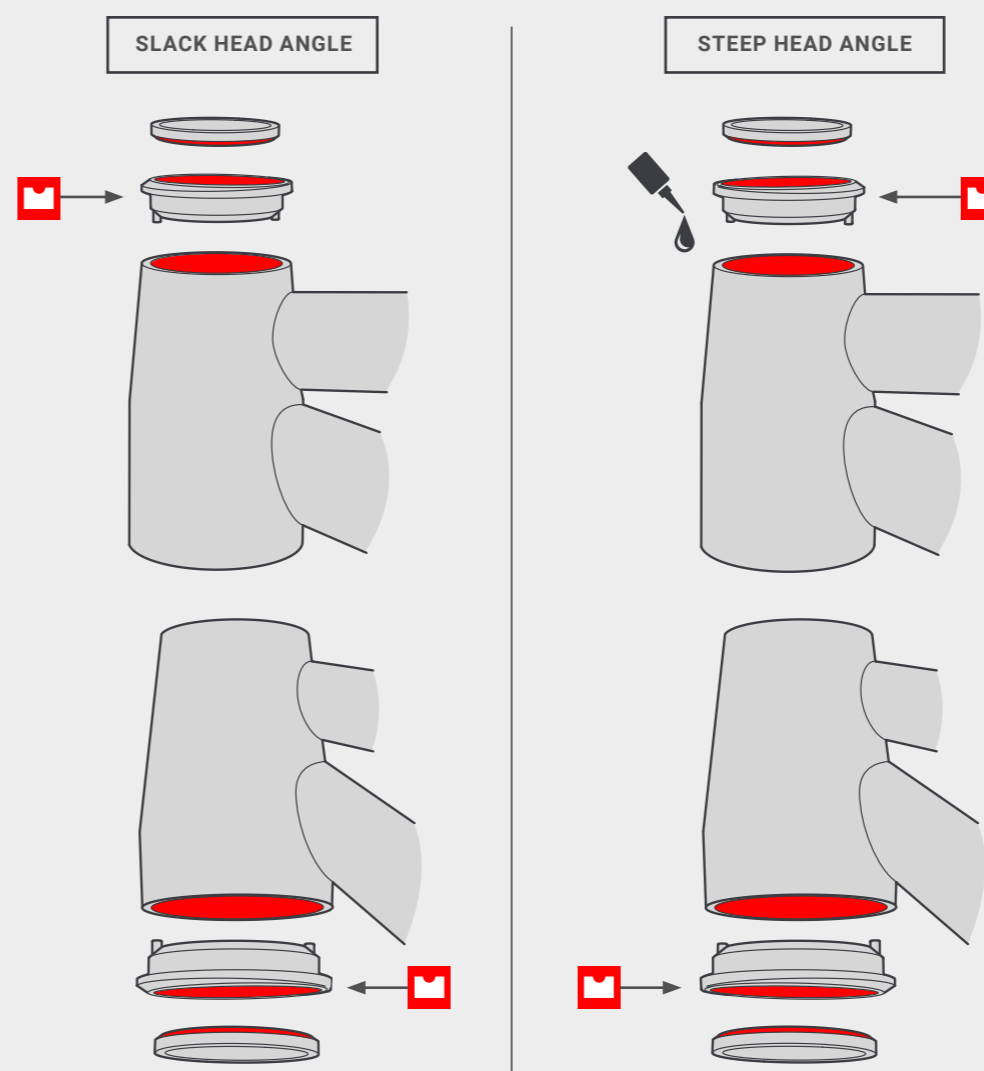
HEADSET DIMENSIONS	TOP: 1 1/2 INCH FULLY INTEGRATED BOTTOM: 1 1/2 INCH FULLY INTEGRATED ACROS: ICR (HT 95/105/115/135)
SEAT POST DIAMETER	30,9 MM
SEAT CLAMP DIAMETER	34,9 MM
DROPOUT	X12/BOOST 148MM
SHOCK DIMENSION	LENGTH: 205X60MM HARDWARE: BODY 54TR (LINK) SHAFT 30MM (FRAME)
FORK	TRAVEL : 160MM 29" / LENGTH: 576,3MM RAKE: 44MM
TIRE	TIRE SIZE LIMIT: (R29X2.4/F29X2.5) (REAR) MAX WIDTH: 64MM, MAX DIAMETER: 758MM TIRE BIGGER THAN 2.4 MUST BE CHECKED AND HAVE A MIN. OF 6,0MM CLEARANCE TO THE FRAME.
MAX. LOAD CAPACITY	115 KG



## CHOOSE THE SIZE OF THE HEADSET

Depending on the frame size of the bike you have to mount the correct headset. There are three different versions of headset sizes.

NO.	FRAMESIZE	HEADTUBE LENGTH
20	S	100 mm
21	M	107 mm
22	L	117 mm
23	XL	137 mm



## INSERT ANGLE CUP / ADJUST STEERING ANGLE

Apply a thin layer of grease to the insides of the bearing cups and the contactpoints of the frame. Insert the bearings with the phase facing the cup. Then put the bearing cups together with the bearings in the frame. **Important:** The markings **M** on the bearing cups must point in the opposite direction. You can find a detailed explanation on the back of this manual.

GO TO SERVICE & SUPPORT

HINWEIS: Sämtliche Informationen, die in diesem Dokument enthalten sind, sind STRENG VERTRÄULICH. Jeder Empfänger dieses Dokuments darf die darin enthaltenen Informationen, direkt oder indirekt, nur mit ausschliesslicher, schriftlicher Zustimmung der Firma MBCAD an Dritte weitergeben oder offenlegen. Die Firma MBCAD behält sich alle Rechte in Bezug auf Urheberrechtsgesetz, Patent- und Gebrauchsmusterschutz vor. Lizenzrechte werden hierdurch nicht erteilt.

NOTE: The information or material contained in this document is STRICTLY CONFIDENTIAL and any recipient of this document shall not disclose or divulge, directly or indirectly, this document or the information or material contained herein without the written consent of the company MBCAD. All copyrights, trademarks, patents and other rights in connection herewith are expressly reserved to the company MBCAD and no license is created hereby.