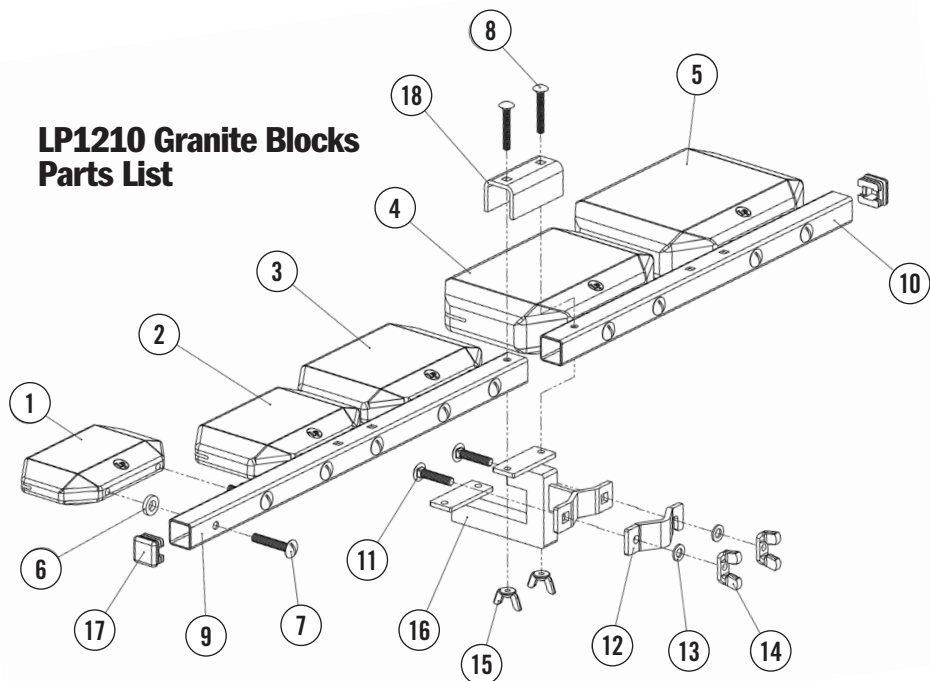


LP1210 Granite Blocks Parts List



1. 000911	Block #1	10. 000932	Rail #2 (4 mounting holes)
2. 000912	Block #2	11. 000921	Carriage Bolt $\frac{5}{16}$ " - 18 x 38mm
3. 000913	Block #3	12. 000927	Mounting Bracket Clamp Plate
4. 000914	Block #4	13. 000922	Flat Washer $\frac{5}{16}$ "
5. 000915	Block #5	14. 000923	Wing Nut $\frac{5}{16}$ " - 18
6. 000926	Rubber Washer 19mm (D) x 4mm	15. 000924	Wing Nut $\frac{1}{4}$ " - 20
7. 000925	Trusshead Machine Screw $\frac{5}{16}$ " - 18 x 45mm	16. 000918	Universal Mounting Bracket
8. 000920	Carriage Bolt $\frac{1}{4}$ " - 20 x 44mm	17. 000930	Rail End Cap
9. 000931	Rail #1 (6 mounting holes)	18. 000929	Rail Joint Plate

Important Information about setting up your new LP Granite Blocks

- When mounting the blocks to the mount rails, avoid over-tightening the bolts. When over-tightened, the rubber isolation washers may dampen the sound of the blocks.
- Use the small rubber pads on the inside of the "V" brackets, (between the bracket and the mounting stand), to protect the tube that the Granite Block mount to.
- For best results, it is recommended that the Granite Blocks remain assembled after the initial set up. Convenient transport of your Granite Blocks can be achieved by loosening the "V" bracket and keeping the two block and bracket assemblies intact.
- When mounting the Granite Blocks using the optional over/under bracket (LP1216), consult the detailed parts drawing to be sure that the bottom bracket holding the two largest blocks if assembled in the correct direction. Reversing the bottom bracket prevents the blocks from centering properly.
- If you have any questions, refer to the detailed parts drawing above. If you need additional assistance email our customer service team at info@dwdrums.com.



Assembly Instructions and Parts Guide

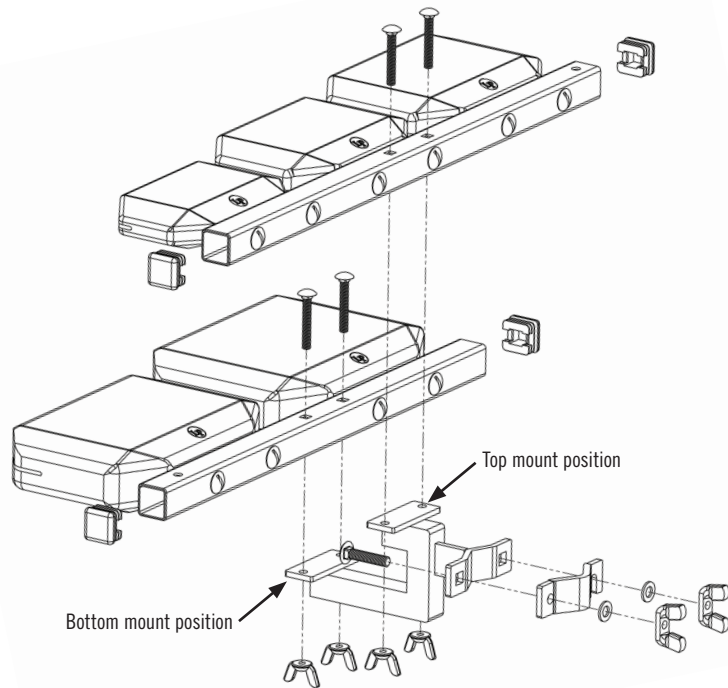


LPMUSIC.COM



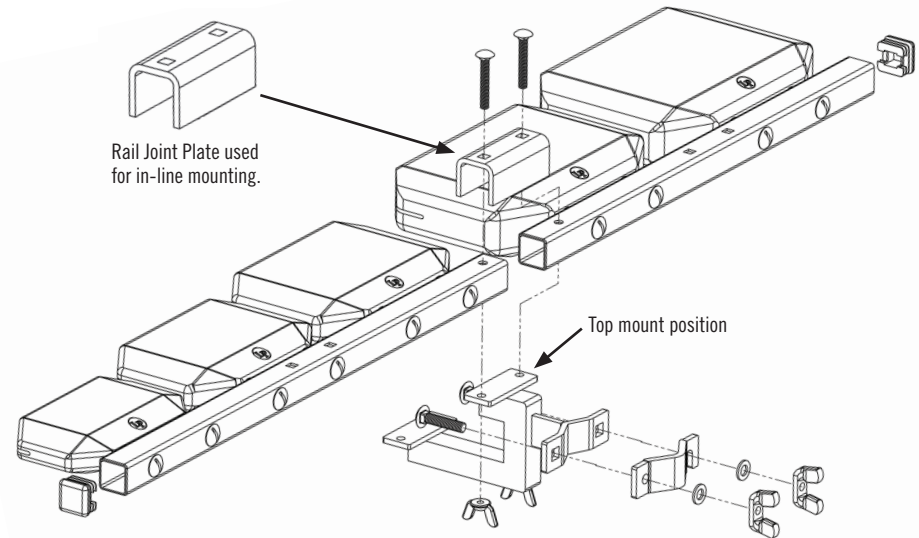
LP1210 Granite Blocks Assembly Instructions

Over-Under Mounting



1. Position bottom rail (2 blocks) with square holes facing up on bottom mount position of bracket.
2. Insert 2 each $\frac{1}{4}$ " (thinner) carriage bolts in holes and secure on bottom bracket mounts with 2 each $\frac{1}{4}$ " (smaller) wing nuts.
3. Position top rail (3 blocks) with square holes facing up on top mount position of bracket.
4. Insert 2 each $\frac{1}{4}$ " (thinner) carriage bolts in holes and secure to top bracket mount with 2 each $\frac{1}{4}$ " (smaller) wing nuts.
5. Insert 4 each plastic end caps in outside ends of both rails.

In-Line Mounting



1. Place rails with blocks with square holes in center of rails facing up and rail end holds in the middle.
2. Place rail joint plate over the middle holes.
3. Secure with 2 each $\frac{1}{4}$ " (thinner) carriage bolts through joint plate, rails and top position of brackets.
4. Secure with 2 each $\frac{1}{4}$ " (smaller) wing nuts on bracket.
5. Insert 2 each plastic end caps in rail ends.

Clamp

1. Insert 2 each $\frac{5}{16}$ " carriage bolts through square holes on back of mount clamp.
2. Attach clamp plate to carriage bolts with slotted side facing down.
3. Tighten using 2 each $\frac{5}{16}$ " washers and wing nuts.