



pacific drums and percussion_ **live and breathe drums**



pacific drums & percussion_custom-inspired drums for every drummer

PDP has a proud lineage. Born from a desire to equip all drummers with better tools for their trade, PDP has set a bold new standard. Maple shells are no longer only for high-end custom kits. Neither is good, quality drum hardware. There's no reason that a good sounding kit should have to cost four grand. Fueled by a passion for drumming and spawned by an innovative heritage, PDP isn't a fly-by-night import or a line of bargain basement instruments. It's a real American-owned drum company dedicated to making great sounding, quality gear. Our one true mission is to live and breathe drums.



PG03 Platinum Series

PG07 Snares

PG08 X7 Series

PG10 M5 Series

PG11 FS Series

PG12 PDP Pedals

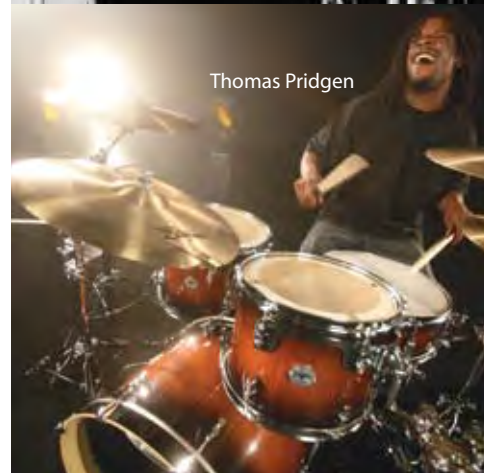
PG13 Hardware & Rack System

PG14 Mainstage & Z5 Series

PG15 PDP Drum Specifications



Eric Moore



Thomas Pridgen



Jon Wilkes

platinum series_blurring the lines between boutique and simply beautiful



Platinum Series Titanium Metallic to Black Fade

Sizes shown: 7x8", 8x10" & 9x12" toms, 12x14" & 14x16" floor toms, 18x22 & 16x20" bass drums and 5.5x14" snare drum. Shown with DW 9000 Series Hardware (sold separately).



Travis McNabb



Travis Smith



**Platinum Series Sapphire
Blue Metallic to Black Fade**
 Sizes shown: 8x10" & 9x12" toms, 12x14" & 14x16" floor toms,
 18x22" bass drum and 5.5x14" snare drum.
 Shown with DW 9000 Series Hardware (sold separately).

platinum series_go platinum



When we set out to design PDP's flagship drum kit, we didn't take the job lightly. How could we change drummers' minds about what could be expected for an unexpected price tag? The shells had to be quality, the wood, bearing edges, it all had to give drummers the same feeling they get behind a set of really pricey drums. But the fit and finish also had to be impressive. For starters, we engineered the first tube lug with a lug receiver. Then, we went with top-quality DW heads by Remo USA to ensure the sound was first-rate. The thing is, we know drummers because we are drummers, and we designed a kit that we'd want to play. Three bass drum sizes (20", 22" and 24") and two tom packs are available (12", 16" and 10", 12", 14"), as well as a wide array of add on drums. (See size chart on page 15).

"The PDP Platinum Series puts DW build quality in front of the average player at a far-from-average price." - DRUMMER Magazine (UK)



**Platinum Series Fire Engine
Red Metallic to Black Fade**
 Sizes shown: 8x10" & 9x12" toms, 14x16" floor tom,
 18x22" bass drum and 5.5x14" snare drum.
 Shown with DW 9000 Series Hardware (sold separately).



PG05_Platinum Kits



Platinum Series in Tobacco to Black Burst
 Sizes shown: 9x12" tom, 12x 14" & 14x16" floor toms, 18x24" bass drum and 5.5x14" snare drum. Shown with DW 9000 Series Hardware (sold separately).



"Pacific (by DW) has for sure stepped it up with the Platinum series line of their drums." Drummerconnection.com

pacific snare drums_performance from top to bottom head

You can't build a good snare drum if you don't know what a good snare drum is supposed to be. Gimmicks are for the other guys. We just make great sounding snare drums that drummers can rely on. From the black nickel over brass Ace, to the all-maple Woody and Rat Rod, these workhorse snares are getting a new generation of drummers talking and surprising some seasoned pros, too. You can't have too many snare drums, and you can't have too many PDP snare drums.

Platinum Series Snares

Crafted from 12-ply of North American Hard Rock Maple with a lacquer interior and featuring heavy-gauge flanged steel counter hoops, Pro-Cut Bearing Edges, dual oval tube lugs, a Platinum drop-style throw-off and DW Control Sound batter heads by Remo USA, Platinum Series snare drums are a versatile addition to any drummer's snare arsenal. Available in all four Platinum Series Lacquer color options in 5.5x14".



Blackout Snare

Our newest snare creation is the stealthy black on black all-maple Blackout snares. Available in 6x10", 4x13", 5x14" and 6x14" sizes.

PDP Specialty Snares

Custom-inspired workhorse drums that are perfect for both live and studio applications. Included in the line are the 5x14" and 6.5x14" black nickel over brass Ace, maple hoop with maple shell 6.5x14" Woody and primer black over maple 6.5x14" Rat Rod.



x7_all-maple 7-piece lacquer kits with pro features galore

It's no mystery why X7 is one of our top sellers. We created a F.A.S.T.[™]-sized all-maple beauty with a stunning lacquer finish and a host of top shelf features that was accessible to drummers everywhere. Not only do you get Remo heads, STM (Suspension Tom Mounts) and True Pitch[™] Tuning, but you get a kit that is made to last. The set includes 7x8", 8x10", 9x12" rack toms, 12x14" and 14x16" floor toms, an 18x22" kick drum and a matching 5x14" snare drum.



Lime Green Sparkle



Red to Black Sparkle Burst



Gold to Black Sparkle Fade



Pearlescent Black



Regal to Royal Sparkle Fade



Pearlescent White

"PDP seems to have struck a balance between quality, affordability and quantity with the X7 kit." Music Radar.com (USA)

"A seven-piece kit at an entry level price is unheard of, but the new Pacific X7 maple kit from DW gives new meaning to the word value." - DRUM! Magazine (USA)



Tony Royster Jr.



Silver to Black Sparkle Fade

m5_get into the majesty of maple for a lot less green

The M5 is a breakthrough kit. Not because of a new technology or state-of-the-art innovation, but because it's an all maple kit for an unheard-of price tag. So, why is maple the preferred material for drum making? Because of its inherent sonic qualities. Maple sounds warm, yet punchy, it projects and has pleasing tonal qualities that make it very musical. Drum manufacturers have been singing maple's praises for decades, but it was only available to a select few. Now, every drummer can enjoy the sweet sound of maple and look good doing it. M5 five-piece kits include F.A.S.T™-sized 8x10" and 9x12" rack toms, 12x14" floor tom with legs, 18x22" kick drum and matching 5x14" snare drum. 7x8" and 14x16" add-on toms are also offered in each finish.

"The M5 is a handsome kit – not wild looking, but quietly cool. Almost dignified." – DRUM! Magazine (USA)



Tobacco Burst

"The M5 will outperform pretty much anything else that falls within this price bracket." DRUMMER Magazine (UK)



Natural to Charcoal Burst



Cherry to Black Fade

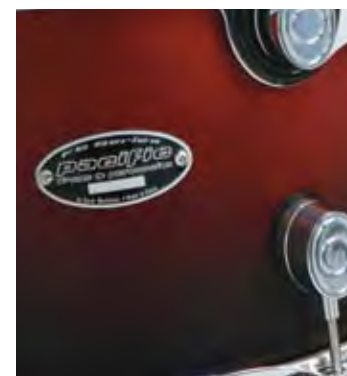


Blue to Black Fade

fs_high-end attack of birch & the understated elegance of a matte lacquer finish



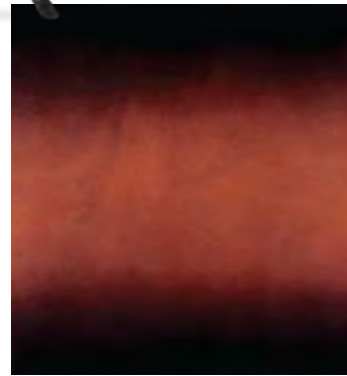
Cherry to Black Fade



Setting the drum world on its ear again, FS is a F.A.S.T™-sized all-birch set that features STM™ (Suspension Tom Mount), True Pitch™ Tuning and Remo heads. Birch is said to offer a brighter tone than maple, but still possesses the warmth and projection that also make it an excellent material for drum making. In fact, birch became very popular in the 80's and has endured for more than two decades. FS comes with 8x10" and 9x12" rack toms, 12x14" floor tom on legs, 18x22" kick drum and matching 5x14" snare drum. 7x8" and 14x16" add-on toms are also available in all finishes.



Natural to Charcoal Burst



Tobacco Burst



Blue to Black Fade

pdp pedals & hardware _designed by the leader in hardware & pedal technology

Whether you go with lightweight 700 Series, heavy-duty 900 Series or 800 medium-weight hardware, you can be sure that PDP stands will get the job done when it really counts. A wide range of thrones, cymbal, snare, and hi-hat stands are available to suit every gig and every musical situation. And for pedals, we present the all-new 500 Series. A revamped look that features a newly added stroke adjustment, casting and beater ball. No PDP kit is complete without feature-packed PDP pedals and the sturdy, chrome plated versatility of PDP hardware.

500 Pedals

- 500 Single Pedal, 502 Double Pedal
- 2-way beater ball
- Auxiliary side base plate
- Offset cam



400 Pedals

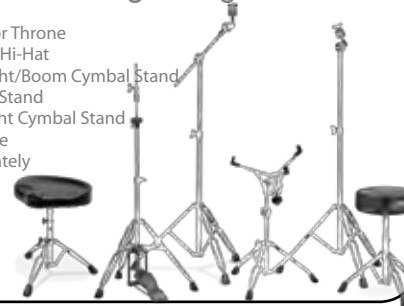
- SP400 Single Pedal, DP402 Double Pedal
- 2-way beater ball
- Auxiliary side base plate
- Offset cam



700 Hardware-Lightweight

- Left to right:
- DT720 Tractor Throne
- HH700 3-leg Hi-Hat
- CB700 Straight/Boom Cymbal Stand
- SS700 Snare Stand
- CS700 Straight Cymbal Stand
- DT700 Throne

All sold separately



800 Hardware-Medium Weight

- Sold separately or as 8.155 hardware pack:
- CB800, CS800, SS800, HH800-01, SP450
- Left to right: CB800 Straight/Boom Cymbal Stand
- CS800 Straight Cymbal Stand
- DT820X Tractor Throne • HH800-01 3-leg Hi-Hat
- SS800 Snare Stand
- HH820 2-leg Hi-Hat • DT800-04 Standard Throne



900 Hardware-Heavy Duty

- Left to right: TS990 Double Tom Stand • CB900 Straight/Boom Cymbal Stand • SS900 Snare Stand • CS900 Straight Cymbal Stand • HH900 3-leg Hi-Hat • HH920 Rotating 2-leg Hi-Hat • DT900 Black Throne



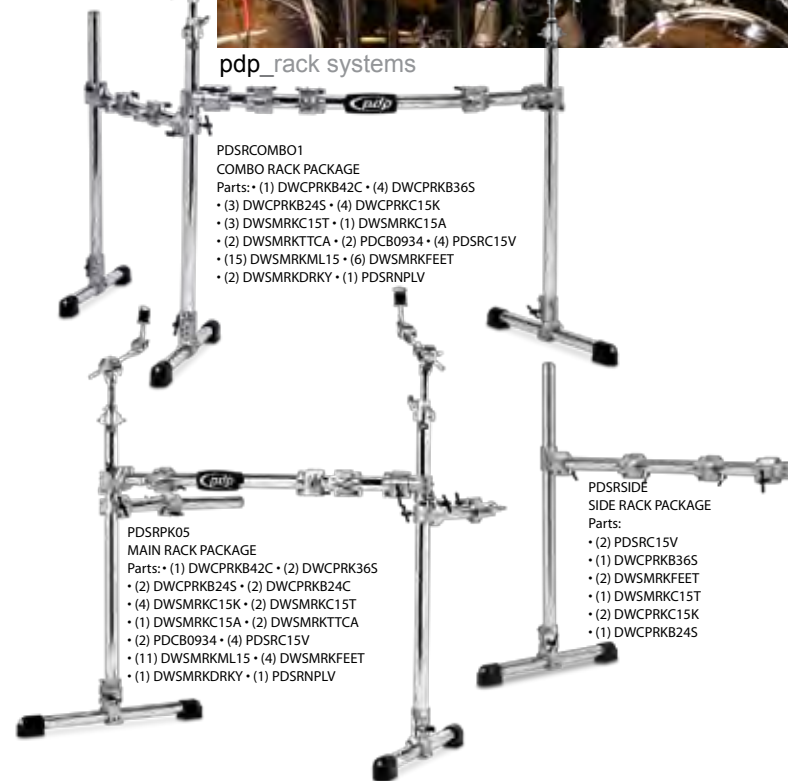
8.155 Hardware Pack

- HH800-01 Hi-Hat Stand
- CB800 Straight/Boom Cymbal Stand
- SP450 Single Pedal
- CS800 Straight Cymbal Stand
- SS800 Single Snare Stand



pdp _rack systems

- PDSRCOMBO1 COMBO RACK PACKAGE**
 Parts: • (1) DWCPRB42C • (4) DWCPRB36S
 • (3) DWCPRB24S • (4) DWCPRK15K
 • (3) DWSMRK15T • (1) DWSMRK15A
 • (2) DWSMRKTTC • (2) PDCB0934 • (4) PDSRC15V
 • (15) DWSMRKML15 • (6) DWSMRKFEEET
 • (2) DWSMRKDRKY • (1) PDSRNPLV



- PDSRPK05 MAIN RACK PACKAGE**
 Parts: • (1) DWCPRB42C • (2) DWCPRK36S
 • (2) DWCPRB24S • (2) DWCPRB24C
 • (4) DWSMRK15K • (2) DWSMRK15T
 • (1) DWSMRK15A • (2) DWSMRKTTC
 • (2) PDCB0934 • (4) PDSRC15V
 • (11) DWSMRKML15 • (4) DWSMRKFEEET
 • (1) DWSMRKDRKY • (1) PDSRNPLV

- PDSRSIDE SIDE RACK PACKAGE**
 Parts:
 • (2) PDSRC15V
 • (1) DWCPRB36S
 • (2) DWSMRKFEEET
 • (1) DWSMRK15T
 • (2) DWCPRK15K
 • (1) DWCPRB24S

pdp rack clamps_and accessories

- PDCH1012: Closed Hi-Hat Arm
- PDDB799: DogBone™ w/ Cymbal Arm
- PDDB798: DogBone™
- PDCB0934: Cymbal Arm (Standard)
- PDCB0934S: Cymbal Arm (Short)
- PDCB0978: Cymbal Boom Arm (7/8")
- DWSMRKDRKY: Hi-Torque Drum key
- DWSMRKFEEET: Rubber Feet (2-pack)
- PDSRC15V: 1.5"-V Clamp
- DWSMRK15A: 1.5"-V Angle Adjustable Clamp
- DWSMRK15T: 1.5"-1.5" T-Leg Clamp
- DWSMRK15K: 1.5"-1.5" Rack Clamp
- DWSMRK15SV: 1.5"-V Angle Adjustable Stacker Clamp
- DWSMRK15AC: 1.5" Accessory Clamp w/ Eyebolt
- DWSMRKML15: 1.5" Hinged Memory Lock
- DWSMRKML10: 1" Hinged Memory Lock
- DWSMRKTTC: 1.5"-3/4" Tube Top Cymbal Adapter
- DWSMRK15AS: 1.5"-1.5" Hinged Angle Stacker Clamp
- DWSMRK15VA: 1.5"-V Accessory Clamp
- DWSMRK15S: 1.5"-1.5" Angle Adjustable Stacker Clamp
- DWSMTA10: 10.5 mm Tom Arm w/ Memory Lock
- DWCPRB42C: 42" Stainless steel Curved Bar
- DWCPRB24C: 24" Stainless steel Curved Bar
- DWCPRB12S: 12" Stainless steel Straight Bar
- DWCPRB24S: 24" Stainless steel Straight Bar
- DWCPRB36S: 36" Stainless steel Straight Bar
- DWCPRB42S: 42" Stainless steel Straight Bar
- DWCPRB72S: 72" Stainless steel Straight Bar
- DWSMRKCAPS: Tube End Caps (2-pack)
- PDSRNPLV: Pacific Nameplate Bar Level

Terry Bozzio



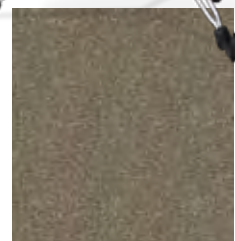
mainstage_ everything you need to get started in one box



The all-new Mainstage is a pre-configured entry level kit that includes drums, pedals, hardware, cymbals and even a throne. The drums feature hardwood construction in a durable wrapped finish. Sabian cymbals and a full hardware pack complete the rig. Drum sizes are 8x10" & 9x12" toms, 14x16" floor tom, 16x22" bass drum and 5x14" matching snare. The hardware pack includes a CB700 cymbal boom stand, CS700 straight cymbal stand, SS700 snare stand, HH700 hi-hat stand and a drum throne. The 4-piece cymbal pack includes 13" top and bottom hi-hats, 20" ride and 16" crash.



Black Metallic



Bronze Metallic

z5_get started

The Z5 is a student set available with hardware and cymbals at a price that's hard to beat. Made from hardwood and wrapped in a durable laminate finish, the Z5 is sold as a shell pack, or with starter cymbal and hardware packs. The kit includes 8x10" & 9x12" rack toms, a 12x14" floor tom on legs, 18x22" bass drum and 5x14" matching snare drum.



Black Cherry



Carbon Black



Aqua Blue



Grey Metal



Emerald

PDP Drum Specifications

Series	Wood	Finish	Heads	Tuning	Mounting	Lugs
Platinum	Maple	Lacquer	Remo USA	True Pitch	STM	Dual Oval Tube
X7	Maple	Lacquer	Remo	True Pitch	STM/BDM	Oval
M5	Maple	Lacquer	Remo	True Pitch	STM/BDM	Oval
FS	Birch	Satin	Remo	True Pitch	STM/BDM	Oval
MainStage	Poplar	Wrap	Remo	True Pitch	BDM	Standard
Z5	Poplar	Wrap	PDP	True Pitch	BDM	Standard

Note:

STM = Suspension Tom Mount

BDM = Bass Drum Mount

Sizes

Series	Bass Drum	Toms	Floor Tom	Snare Drum	Add-Ons
Platinum	16x20"	7x8"	12x14"	5.5x14"	N/A
	18x22"	8x10"	14x16"		
	18x24"	9x12"	16x18"		
X7	18x22"	7x8", 8x10", 9x12"	12x14", 14x16"	5x14"	18x22"
M5	18x22"	8x10", 9x12"	12x14"	5x14"	18x22", 7x8", 14x16"
FS	18x22"	8x10", 9x12"	12x14"	5x14"	18x22", 7x8", 14x16"
MainStage	16x22"	8x10", 9x12"	14x16"	5x14"	N/A
Z5	16x22"	8x10", 9x12"	12x14"	5x14"	N/A





pacific drums and percussion **_live and breathe drums**

#PRCA10PDP ©2010 Pacific Drums and Percussion. All Rights Reserved. The PDP logo is a registered trademark of Drum Workshop, Inc. Printed in U.S.A. Specifications subject to change.