

DTF Printing: Easy-to-Follow Guidelines & Tips

Bring your designs to life with DTF (Direct-to-Film) printing! Follow these simple steps to ensure your prints are high-quality, vibrant, and durable.

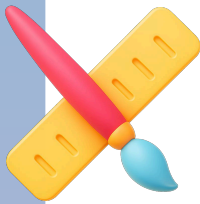
1. File Setup

- Accepted Formats: PNG (ideal for transparency) and JPEG
- Resolution: 300 DPI at final print size
- Color Profile: Use sRGB for best color accuracy



2. Design Recommendations

- **Transparency:**
 - Avoid soft glows or fades
 - Use solid shapes or halftone effects
 - Include no-ink (fully transparent) areas for a lighter feel
- **Lines & Text:**
 - Lines: At least 1pt (AI) or 4px (Photoshop)
 - Fonts: 10pt or larger
 - Add a solid background for small text to enhance adhesion
- **Large Color Blocks:**
 - Break up with textures, patterns, or cut-outs
 - Reduces stiffness and improves fabric feel
- **Photographs:**
 - Use high-resolution, sharp images
 - Great for full-color photo printing



3. Common Mistakes to Avoid

- Don't upscale low-res images—design at 300 DPI
- Avoid semi-transparent graphics and fuzzy edges
- Don't forget to hide/remove template guide layers



4. Print Feel and Washability

- Initial Feel: Slightly stiff at first
- After Washing: Becomes noticeably softer



5. Garment Care Instructions

- Turn inside out before washing
- Wash cold with mild detergent
- Air dry or tumble dry on low
- Iron inside out—never directly on the design



6. Normal Printing Traits

On dark or colored garments, you may notice a very faint white outline around the design. This is the underbase layer—an essential part of the DTF process that ensures your colors appear vibrant and consistent on all fabric types.



Why These Guidelines Matter

By following these tips, you'll ensure a smoother print process, fewer errors, and results that truly impress. Your design deserves to look its best—these steps make that happen!

Need help? Reach out to our team for design support or template guidance!