

2019 AFA Leaders Conference



Agriculture Future of America

AFA builds bridges for young leaders
to foster engagement and innovation in food and agriculture.

Cultivate: Your Roots and Beyond



In the warmth of the sun, if you close your eyes, you can almost hear the growth and new life emerging as seedlings spring up from the soil. After a long winter, this new life is as much a breath of fresh air as the breeze itself. It's evidence of hope and the future.

If you look at a tiny sprout, this hope, this new life can appear fragile and delicate. How can such a small thing survive on its own? Truthfully, it may not. While hardier than we give it credit, hope and new growth must be cultivated in order to flourish. It needs the right nutrients and amount of sunlight and water to grow.

Likewise, our path of personal and professional growth, while ultimately dependent upon ourselves, is made easier if someone comes alongside us and invests in our development. Cultivation is intentional. It is not accidental. It is a purposeful investment.

Without healthy roots, a new seedling will not survive. They are integral to its ability to seek and absorb nutrients. Similarly, our roots – our backgrounds, different as they are – are what make us strong. These different experiences allow us to bring the richness of varying perspective to the table. We want to recognize the value of these unique backgrounds as we strive toward what lies beyond.

Because when we look past our differences, we share a common purpose in feeding and providing resources for the growing world. Yes, our passion for agriculture and food unite us. Our backgrounds are important. They are part of who we are, but they're not all we are. We don't choose our backgrounds, but we can choose how we seek to understand those around us. There is a place in agriculture for everyone.

Above the root systems, the differences between new plants are more striking. One becomes woody; another sends out vines this way and that. In the same way, what makes you unique as a leader shines through in the way you pursue solutions and add value to the world. How you live out your commitment to agriculture and food is specific to you. There isn't a right or wrong way. We each bring our own talents and passions, and the industry is richer because of this.

As a young leader, your role is to capitalize on the growth experiences available to you. Cultivate innovation, your future and connections. As you grow, pass it on. Plant seeds for those who come behind you. Be willing to walk the path alongside another new leader and provide cultivating experiences to others.

This is why Agriculture Future of America and AFA Leaders Conference exist – to build bridges for young leaders to foster engagement and innovation in food and agriculture – to Cultivate: Your Roots and Beyond.

Welcome to AFA Leaders Conference



Cultivate – it’s a fascinating word. At its core, it means to prepare for raising crops. More basically, it can be defined as fostering growth.

Cultivate is the theme our student leaders chose for the 2019 AFA Leaders Conference, and it’s also the reason you are here. The students who are here have chosen a path of personal and professional growth. That kind of cultivation is deeply intentional. It is not accidental. You are a key part of this cultivation.

Our job at Agriculture Future of America is to make the growth of young leaders easier by connecting them to those who support their cultivation. That’s you! You will have a lasting impact on the 800 young leaders who are here. For the next couple of days, take time to engage and answer these young leaders’ questions and share your experiences. You won’t be disappointed. These young leaders have been specifically selected for their innovation, passion and commitment to the future of agriculture and food. Just as you are a part of cultivating their growth now, they will cultivate the growth of the future.

This is why AFA and Conference exist – to build bridges for young leaders to foster engagement and innovation in food and agriculture – to Cultivate: Your Roots and Beyond.

Mark E. Stewart, AFA President & CEO

AFA Staff

K. Russell Weathers, Chairman

Mark Stewart, President & CEO

Nancy Barcus, Chief Operating Officer

Programs

Matt Brillhart

Amy Crippen

Emily Schuckebrook

Betsy Smith

External Relations

Chelsey Buseck

Ashley Collins

Megan Karlin

Traci Via

Business Operations

Mayela Esser

Leila Hill

Joanne Kao

Johnna Wallingford

Volunteers

AFA sincerely appreciates the volunteers who make Conference possible.

AFA Student Leaders



Industry Schedule

This schedule lists all activities open to industry participation. Certain activities are reserved as partner benefits. **All activities require prior registration.** If you have any questions, please contact Traci Via at 816-820-1740.

Thursday, Nov. 7

1:30 p.m.	Check-in opens	Lobby (Sheraton)
8:30 p.m.	Mocktails (Leader Partner benefit—\$25,000+)	Exhibit Hall A (Sheraton)
8:45 p.m.	Ice Cream Connection (Program Partner benefit—\$10,000+)	Washington Park Place (Westin)

Friday, Nov. 8

6:00 a.m.	Opportunity Fair setup and check-in	Exhibit Hall B (Sheraton)
7:00 a.m.	Agribusiness Council of Kansas City breakfast (registration required)	Empire Room (Sheraton)
9:00 a.m.	Opportunity Fair	Exhibit Hall B (Sheraton)
11:45 a.m.	AFA Board of Directors lunch (invitation only)	Empire Room (Sheraton)
12:00 p.m.	Opportunity Fair lunch (ticketed event)	Exhibit Hall A (Sheraton)
3:00 p.m.	Collegiate and Industry Reception	Terrace (Sheraton)
6:00 p.m.	Leader in Agriculture Award reception	Exhibit Hall B (Sheraton)
7:00 p.m.	Leader in Agriculture Award Dinner (registration required)	Exhibit Hall A (Sheraton)

Saturday, Nov. 9

7:00 a.m.	Partner breakfasts (Leader Partner benefit—\$25,000+)	Various Rooms
-----------	---	---------------

Collegiate Schedule

This schedule lists all activities open to collegiate liaisons. **Some activities require prior registration.** If you have any questions, please contact Ashley Collins at 704-692-7719.

Thursday, Nov. 7

1:30 p.m.	Check-in Begins	Gillham Hall (Sheraton)
6:00 p.m.	Reception with AFA Board of Directors	VanHorn (Sheraton)

Friday, Nov. 8

3:00 p.m.	Collegiate and Industry Reception	Terrace (Sheraton)
6:00 p.m.	Leader in Agriculture Award reception	Exhibit Hall B (Sheraton)
7:00 p.m.	Leader in Agriculture Award Dinner (registration required)	Exhibit Hall A (Sheraton)

Saturday, Nov. 9

7:00 a.m.	AFA Collegiate Liaison breakfast	Spectators (Sheraton)
8:30 a.m.	AFA Collegiate Liaison update	Empire A (Sheraton)

2019 AFA Student Leaders (left to right) Back row: Carly Claucherty, Michigan State University; Kiernan Comer, University of Kentucky; Sky Sheng, University of Wisconsin - Madison; Bishal Thapa, University of Idaho; Jake Major, Utah State University; Cullen Eppright, Texas A&M University; Joey McCannon, Clemson University; Natalie Hawkins, Oklahoma State University; Tanner Keeton, Texas Tech University; TJ Ruen, South Dakota State University; Gus Gill, Colorado State University; and Elizabeth Oys, Iowa State University. Middle row: Gabe Palmer, Missouri State University; Kelsea Koonce, University of Tennessee - Martin; Heather Peterson, University of Nevada - Reno; Mercedes McCue, Colorado State University; Nelson Knobloch, Purdue University; Sophie Chance, North Carolina State University; Michael Curry, University of Illinois at Urbana-Champaign; Jaime Mojarra, University of Idaho; and Emma Graham, University of Findlay. Front row: Chaela Minor, Purdue University; Morgan Lambrecht, Purdue University; Faith Buhrandt ; University of Wisconsin - River Falls; Sarah Appel, Washington State University; Katie Haase, Northwest Missouri State University; Dakota Stroud, Virginia State University; Taylor Lutz, The Ohio State University; Eugene Baraka, University of Nebraska - Lincoln; Katie O'Haire, Iowa State University; Megan Dunn, Texas Tech University; and Kylee Kohls, South Dakota State University. Not pictured: Caleb Swears, University of Arkansas.

AFA extends its appreciation to the following individuals, businesses, corporations, institutions and associations that contribute to the overall success of the organization as crucial partners in the preparation of new leaders in the industry. Their ongoing support is vital to the success of this Conference and the many other programs and services provided by AFA.

Investments \$100,000 to \$249,999



Enid and Crosby Kemper Foundation
R.C. Kemper Charitable Trust

William T. Kemper Trust

Investments \$50,000 to \$99,999



Arvin Gottlieb Charitable Foundation

Investments \$25,000 to \$49,999



Investments \$10,000 to \$24,999	American Royal Association Belles of the American Royal BNSF Railway Company CGB Enterprises, Inc Cobb-Vantress, Inc. Dairy Farmers Of America The Gaviion Group, LLC Hunter Legacy Family Foundation K-Coe Isom Kansas Corn Growers Association Kuhn North America, Inc. LEWMAR Foundation Livestock Marketing Association Metlife Agricultural Finance National Crop Insurance Services National Pork Board	National Corn Growers Association Nationwide Mutual Insurance Company Nestle Purina Petcare Company Nebraska Corn Board Ohio Corn & Wheat Georgia and Bob Richter Roderick J. and Jo Anne Cyr Foundation Seaboard Foods Smithfield Foods The Sosland Foundation St. Joseph Area Chamber of Commerce Trimble Navigation Limited Tyson Foods, Inc. Union Pacific Railroad U.S. Poultry & Egg Association
Investments \$5,000 to \$9,999	AgReliant Genetics Agri Beef American Angus Association American Egg Board American Soybean Association Association of Equipment Manufacturers Cactus Feeders California Cotton Alliance Ceva Animal Health Compass Minerals fairlife, LLC	Farm Credit Mid America Farmers Mutual Hail FCS Financial FLM Harvest Hormel Foods Corporation Iowa Corn Growers Association J.R. Simplot Company Kansas Department of Agriculture Missouri Corn Merchandising Council Missouri Department of Agriculture
Investments \$1,000 to \$4,999	AgriBank, FCB Agricultural Retailers Association American Farm Bureau Federation Association of Missouri Electric Cooperatives Bader Rutter Barkley Chad Nuelle CLAAS FCS of America GDM Seeds Informa Markets Ingredion Incorporated	Kansas Agribusiness Retailers Association Kansas Grain and Feed Association Kraft Heinz MFA Foundation MFA Inc. Missouri Pork Association Missouri Soybean Association National Association of Conservation Districts Renewable Energy Group Riverview Tractor Supply Co.
Collegiate Partners — providing delegate sponsorship	Alcorn State University Butler Community College Colorado State University Cornell University Huntington University Illinois State University Iowa State University Kansas State University Louisiana State University Michigan State University Murray State University New Mexico State University North Dakota State University Northwest Missouri State University Oklahoma State University Purdue University South Dakota State University	Texas Tech University The Ohio State University The Ohio State University ATI University of California Davis University of Florida University of Idaho University of Illinois University of Maryland-College Park University of Minnesota University of Missouri University of Tennessee at Martin University of Wisconsin-Platteville University of Wisconsin-River Falls Utah State University Washington State University Wilmington College

In-kind These partners provided in-kind support for the 2019 AFA Leaders Conference.

fairlife, LLC	Hallmark Cards, Inc.
Harvest Productions	Ricoh USA, Inc.
Highland Dairy - KC	

Agriculture Future of America

AFA creates partnerships that identify, encourage and support outstanding young people pursuing careers in agriculture. AFA is nationally recognized for its excellence in leader training and career development for college students and young professionals in the agricultural and food industry.

AFA Leaders Conference



AFA Leaders Conference is a key component of AFA's leader and career development training program. This forum provides students an opportunity to develop key competencies to enhance their marketable skills. Agricultural businesses, organizations, associations, institutions and individuals invest in this program as a means to develop human capital for our industry.

At Conference, students participate in one of four program tracks with the following emphases:

Track 1 — Personal assessment and career preparation

Track 2 — Communication and relationship-building skills

Track 3 — Managing change and preparing to live and work in a global marketplace

Track 4 — Lifelong learning and industry awareness

Learn more about each specific track in the next pages. All AFA delegates, industry professionals and volunteers are invited to share their thoughts about the 2019 AFA Leaders Conference via social media using [#AFALC19](#). Find us there, too!



Keynote Speakers



Rick Riggsby



Mark Stewart
Agriculture Future America



Victoria Arlen

AFA Opportunity Fair



Agriculture Future of America connects college students to opportunities for career development in business, production, education, science and technology.

The AFA Opportunity Fair is designed to give participating organizations a competitive edge in the identification of human capital. AFA connects students and employers based on shared interests.

During the AFA Opportunity Fair, students learn about available internships and full-time employment opportunities, as well as graduate school and international study programs. Recruiters are eager to share their definitions of agriculture and explore opportunities to help students create stronger personal and professional portfolios through internships or full-time employment.

2019 AFA Opportunity Fair Participants

AgCareers.com, Inc.	Farm Credit	National Association of Conservation Districts
AGCO Corporation	Farmers Mutual Hail Insurance Company of Iowa	National Corn Growers Association
AGI SureTrack	FLM Harvest	National FFA Organization
AgReliant Genetics	FMC Corporation	National Pork Board
Agri Beef	Gavilon, LLC	Nationwide Mutual Insurance Company
Agricultural Retailers Association	GDM Seeds	Nestle Purina Petcare
Agriculture Future of America	Gowan USA, LLC	Nutrien
Agriculture Scholarship Center	GROWMARK, Inc.	Rabo AgriFinance
American Angus Association	Helena Agri-Enterprises, LLC.	Raven Industries
American Farm Bureau Federation	Hormel Foods Corporation	Renewable Energy Group
American Royal	ICM, Inc.	Riverview, LLP
Archer Daniels Midland Company	IFYE Association of the USA, Inc.	Seaboard Foods
Ardent Mills	Ingredion Incorporated	Smithfield Foods
Bader Rutter	Institute of Food Technologists	Scoular
Barkley	INTL FCStone Inc.	Syngenta
BASF	J.R. Simplot Company	The Kraft Heinz Company
Bayer	John Deere	Tractor Supply Co.
BNSF Railway Company	K-Coe Isom	Trimble Navigation Limited
Bunge North America	Kansas State Master of Agribusiness	Tyson Foods, Inc.
Cactus Feeders	Kuhn North America, Inc.	Union Pacific Railroad
Cargill, Inc.	Land O' Lakes, Inc.	University of Tennessee-Knoxville
CGB Enterprises, Inc.	Loma Vista Nursery	UPL OpenAg
CHS Inc.	Louis Dreyfus Company	U.S. Poultry & Egg Association
CLAAS of America	MANRRS	Valent U.S.A. LLC
Cobb-Vantress, Inc.	Merck Animal Health	Wilbur-Ellis
Compass Minerals	MFA Inc.	
Corteva Agriscience	Missouri Department of Agriculture	
Dairy Farmers of America	Missouri Soybean Merchandising Council	
Doctor of Plant Health - UNL	NASDA	
Elanco Animal Health		

Track 1 Student Advisory Team



Plant your purpose. Nurture your growth.
Cultivate your future.

(L-R) Jaime Mojarra, Nelson Knobloch and Katie Haase
Student Advisory Team members assess, plan and facilitate the Track experience for student delegates.

The pillar of the Track 1 program is self assessment. Understanding your talents, skills, values, and motivations is important to finding the right career path, activating personal growth and defining your contribution to the agricultural community. Self awareness leads to a higher level of cognition and ability to work with those around you in order to reach your potential.

Thank you to all presenters, many of whom volunteer their services, for making this program possible for the next generation of agricultural leaders.

Track 1 Speakers



Terry Abbott
Wilbur-Ellis



Maribel Alchin
American Egg Board



Davin Altoff
Missouri Department
of Agriculture



Bill Baker
J.R. Simplot
Company



Rachel Biggs
K-Coe Isorn



Charles Benson
BASF



Katie Birchfield
Seaboard Foods



**Sarah
Bohnenkamp**



Hilary Black
Missouri Corn
Merchandising Council



Matt Boston
Kuhn North
America, Inc.



Jill Brown
Northwest Missouri
State University



Gina Brummels
Ardent Mills



Brandon Brunt
Elanco Animal
Health



Tim Callahan
GROWMARK, Inc.



Micah Chabot
GDM Seeds



Travis Clark
Gavilon, LLC



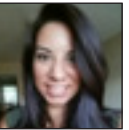
Sara Crawford
National Pork Board



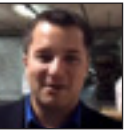
Virginia Daly
Gowan USA, LLC



Laura Demmel
National Assoc. of
Conservation Districts



Anais Diaz
Cargill, Inc.



Joseph DiPietro
AGCO Corporation



Meghan Dillie
Ingredient
Incorporated



Carrie Dodds
Iowa Corn Growers
Association



Nate Duyn
Agri Beef



AJ Ebert
Land O'Lakes, Inc.



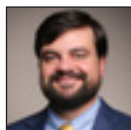
Brandon Emme
ICM, Inc.



Miranda Frye
Cobb-Vantress, Inc.



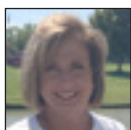
Joan Garcia
Ingredient
Incorporated



Ryan Gill
Missouri Soybean
Merchandising Council



Max Glebocki
Farm Credit



Kelly Goss
Merck Animal Health



Michael Granché
National Corn
Growers Association



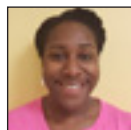
Adam Gross
Renewable Energy
Group



Brandi Hampton
John Deere



Amy Hayes
Trimble Navigation
Limited



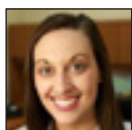
Franchon Heyward
Ingredion
Incorporated



Laura Higgins
Corteva Agriscience



Mike John
MFA Inc.



Bethany Kelly
American Angus
Association



Tracy Klever
Farmers Mutual Hail
Insurance Co. of Iowa



Neil Knobloch
Purdue University



Lynn Koenigsfeld
Cargill, Inc.



Daniel Lane
MetLife Agricultural
Finance



Nick Koewler
Land O'Lakes, Inc.



Emily Koop
Kansas Corn
Growers Association



Barbara Kraft
Kuhn North America,
Inc.



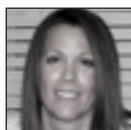
Matt Landreth
MetLife Agricultural
Finance



Kristie Larson
American Royal



Tammy Lee
John Deere



Jennifer Lingo
Scoular



Ryan Locke
FMC Corporation



Erika Lippincott
Nationwide Mutual
Insurance Company



Justin Margherio
Bayer



Randi Martin
Cobb-Vantress, Inc.



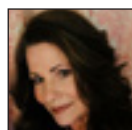
Raelene Maas
GROWMARK, Inc.



Alondra Mekueiro
Cactus Feeders



Laura Muren
Helena Agri-
Enterprises, LLC



Julie Newmarch
Wilbur-Ellis



Kyra O'Brien
Merck Animal Health



Jennifer Overholt
BASF



Keith Owen
National Assoc. of
Conservation Districts



Michelle Pace
INTL FCStone Inc.



Ryan Penner
Tyson Foods, Inc.



Sarah Petersheim
Bader Rutter



Cori Rico
Gowan USA, LLC



Kayla Rink
Dairy Farmers of
America



Megan Rouleau
Bader Rutter



Jarred Rybicki
INTL FCStone Inc.



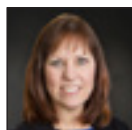
Fran Schoenwetter
Informa Markets



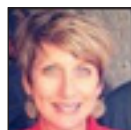
Krista Scott
The Ohio State
University



Jayde Sills
AgReliant Genetics



Tami Smith-Rohovit
Farmers Mutual Hail
Insurance Co. of Iowa



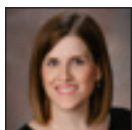
Joan Spaeth
Riverview, LLP



Chris Stallo
American Angus
Association



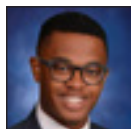
Maggie Stith
Valent U.S.A. LLC



Jennifer Struck
Corteva Agriscience



Esther Sussman
Kraft Heinz



Nick Tarleton
The Kraft Heinz
Company



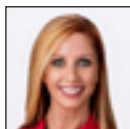
Robin Thomas
Syngenta



Susie Thompson



Pernell Toney
Farm Credit Services
of America



Melissa Traffas
ICM, Inc.



Kristy VanMeter
CGB Enterprises, Inc.



Haley Warner
Union Pacific
Railroad



Julie Watkins
Barkley



Justus Watson
Union Pacific
Railroad



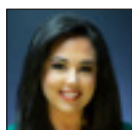
Chris Weisgerber
GDM Seeds



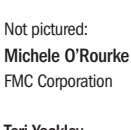
Kerry Wefald
Kansas Department
of Agriculture



Jason Womack
The Womack
Company



Lindsay Zinser
Tractor Supply Co.



Not pictured:
Michele O'Rourke
FMC Corporation

Teri Yackley
AGCO Corporation

Track 1 – Thursday, Nov. 7

1:00 p.m.	Registration	Gillham Hall (Sheraton)
4:15 p.m.	New to AFA: Hit the Ground Running	Chouteau (Sheraton)
5:00 p.m.	Welcome session AFA Student Advisory Team Rick Rigsby Mark Stewart, Agriculture Future of America	Exhibit Hall A (Sheraton)
7:15 p.m.	Track orientation and group discussion Track 1 Student Advisory Team	San Francisco/Chicago (Sheraton)
8:45 p.m.	Ice Cream Connection: student networking	Washington Park Place (Westin)

Track 1 – Friday, Nov. 8

7:45 a.m.	Morning message	San Francisco/Chicago (Sheraton)
8:00 a.m.	Sprouting Your Professional Career: Resumes and Networking Speaker: Terry Abbott, Wilbur-Ellis and Michele O'Rourke, FMC Corporation Bill Baker, J.R. Simplot Company Rachel Biggs, K-Coe Isom Katie Birchfield, Seaboard Foods Brandon Brunt, Elanco Animal Health Tim Callahan, GROWMARK, Inc. Micah Chabot, GDM Seeds Travis Clark, Gavilon, LLC Sara Crawford, National Pork Board Virginia Daly, Gowan USA, LLC Anais Diaz, Cargill, Inc. Meghan Dillie, Ingredion Incorporated Miranda Frye, Cobb-Vantress, Inc. Joan Garcia, Ingredion Incorporated Max Glebocki, Farm Credit Kelly Goss, Merck Animal Health Adam Gross, Renewable Energy Group Brandi Hampton, John Deere Amy Hayes, Trimble Navigation Limited Bethany Kelly, American Angus Association Nick Koewler, Land O'Lakes, Inc. Barbara Kraft, Kuhn North America, Inc. Matt Landreth, MetLife Agricultural Finance Jennifer Lingo, Scoular Raelene Maas, GROWMARK, Inc.	San Francisco/Chicago (Sheraton) Justin Margherio, Bayer Randi Martin, Cobb-Vantress, Inc. Alondra Meixueiro, Cactus Feeders Julie Newmarch, Wilbur-Ellis Kyra O'Brien, Merck Animal Health Jennifer Overholt, BASF Michelle Pace, INTL FCStone Inc. Ryan Penner, Tyson Foods, Inc. Cori Rico, Gowan USA, LLC Megan Rouleau, Bader Rutter Jarred Rybicki, INTL FCStone Inc. Jayde Sills, AgReliant Genetics Tami Smith-Rohovit, Farmers Mutual Hail Insurance Company of Iowa Joan Spaeth, Riverview, LLP Chris Stallo, American Angus Association Maggie Stith, Valent U.S.A. LLC Jennifer Struck, Corteva Agriscience Pernell Toney, Farm Credit Services of America Melissa Traffas, ICM, Inc Kristy VanMeter, CGB Enterprises, Inc. Justus Watson, Union Pacific Railroad Teri Yackley, AGCO Corporation Lindsay Zinser, Tractor Supply Co.
10:45 a.m.	Opportunity Fair	Exhibit Hall B (Sheraton)
12:00 p.m.	Professional Etiquette in Dining Jill Brown, Northwest Missouri State University	San Francisco/Chicago (Sheraton)
1:45 p.m.	Leading in Inclusive Environments Krista Scott, The Ohio State University	Gillham Hall (Sheraton)

3:00 p.m.	Discovering Career Paths in Agriculture Moderator: Kristie Larson, American Royal Maribel Alchin, American Egg Board Davin Altoff, Missouri Department of Agriculture Charles Benson, BASF Hilary Black, Missouri Corn Merchandising Council Matt Boston, Kuhn North America, Inc. Gina Brummels, Ardent Mills Laura Demmel, National Association of Conservation Districts Joseph DiPietro, AGCO Corporation Carrie Dodds, Iowa Corn Growers Association Nate Duyn, Agri Beef AJ Ebert, Land O'Lakes, Inc. Brandon Emme, ICM, Inc. Ryan Gill, Missouri Soybean Merchandising Council Michael C. Granché, National Corn Growers Association Franchon Heyward, Ingredion Incorporated Laura Higgins, Corteva Agriscience Mike John, MFA Inc. Tracy Klever, Farmers Mutual Hail Insurance Company of Iowa Neil Knobloch, Purdue University	San Francisco/Chicago (Sheraton) Lynn Koenigsfeld, Cargill, Inc. Emily Koop, Kansas Corn Growers Association Daniel Lane, Metlife Agricultural Finance Tammy Lee, John Deere Erika Lippincott, Nationwide Mutual Insurance Company Ryan Locke, FMC Corporation Laura Muren, Helena Agri-Enterprises. LLC Keith Owen, National Association of Conservation Districts Sarah Petersheim, Bader Rutter Kayla Rink, Dairy Farmers of America Fran Schoenwetter, Informa Markets Esther Sussman, The Kraft Heinz Company Nick Tarleton, The Kraft Heinz Company Robin Thomas, Syngenta Haley Warner, Union Pacific Railroad Julie Watkins, Barkley Kerry Wefald, Kansas Department of Agriculture Chris Weisgerber, GDM Seeds
5:00 p.m.	Track meeting	San Francisco/Chicago (Sheraton)
6:00 p.m.	Leader in Agriculture Award reception	Exhibit Hall B (Sheraton)
7:00 p.m.	Leader in Agriculture Award Dinner	Exhibit Hall A (Sheraton)

Track 1 – Saturday, Nov. 9

8:00 a.m.	Morning message	San Francisco/Chicago (Sheraton)
8:30 a.m.	Anti-Average Leader: Cultivating a Life of Epic Impact Sarah Bohnenkamp	San Francisco/Chicago (Sheraton)
10:00 a.m.	Dressing for Success in the 21st Century Jill Brown, Northwest Missouri State University	Exhibit Hall A (Sheraton)
11:15 a.m.	AFA Leader Fellowship™ overview Amy Crippen, Agriculture Future of America	Exhibit Hall A (Sheraton)
1:00 p.m.	Balancing Priorities Jason Womack, The Womack Company	San Francisco/Chicago (Sheraton)
3:45 p.m.	It's All in the Experience with Track 4 Moderators: Gus Gill, Colorado State University, and Morgan Lambrecht, Purdue University	San Francisco/Chicago (Sheraton)
5:15 p.m.	Track meeting	San Francisco/Chicago (Sheraton)
5:30 p.m.	Dinner, entertainment and service project	Exhibit Hall (Sheraton)

Track 1 – Sunday, Nov. 10

8:00 a.m.	Morning message	San Francisco/Chicago (Sheraton)
8:15 a.m.	Unleashing the Most Positive You Susie Thompson	San Francisco/Chicago (Sheraton)
9:45 a.m.	Track Wrap-up and feedback	San Francisco/Chicago (Sheraton)
10:15 a.m.	Closing session Victoria Arlen	Exhibit Hall A (Sheraton)
11:15 a.m.	Adjourn	

Track 2 Student Advisory Team



Cultivate communication. Foster personal integrity and authenticity. Advance critical thinking and teamwork.

(L-R) Kylee Kohls, Dakota Stroud, Katie O'Haire

Student Advisory Team members assess, plan and facilitate the Track experience for student delegates.

Your ability to communicate effectively is crucial to success in both personal and professional relationships. Whether it be written, verbal, nonverbal or virtual, these skills will be the determining factors to accomplishing your goals. Track 2 will help you to further develop and enhance your communication skills, critical thinking, teamwork, and personal ethics through connections made with your peers, panelists and speakers.

Thank you to all presenters, many of whom volunteer their services, for making this program possible for the next generation of agricultural leaders.

Track 2 Speakers



Brian Ahrens
UPL Open Ag



Caitlin Beedle
Helena Agri-Enterprises, LLC



Adam Carroll
National Financial Educators



Laura Handke
Ag Education on the Move



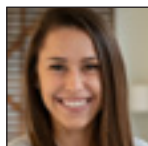
Jan Hargrave
Jan Hargrave & Associates



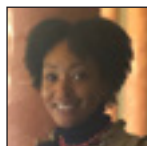
Heidi Holliday
Consensus KC



Curt Hudnutt
Rabo AgriFinance



Kayla Keyser
FLM Harvest



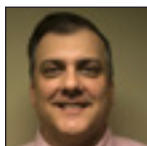
Shakedra Knight
Consensus KC



Kate Lambert
FCS Financial



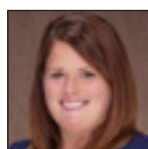
Rhett Laubach
YourNextSpeaker



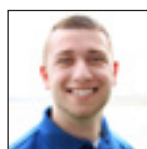
Brad Leighton
CGB Enterprises, Inc.



Nate Looney
Westside Urban Gardens



Claire Masker-King
National Pork Board



Micah Mensing
Farm Credit Mid America



Brian Meyer
Raven Industries



Ryan Moe
INTL FCStone Inc.



Darren Parker
AGCO Corporation



Rodeney Patterson
Farm Credit



Kurt Peterson
Scoular



Lindsey Powell
GROWMARK, Inc.



Celia Salmon
Elanco Animal Health



Laura Sands
K-Coe Isom



Jack Stahlmann
Don't Flinch, LLC



David Stanko
Nutrien



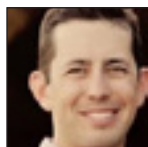
Courtney White
BASF



Allen Williams
Archer Daniels Midland Company.



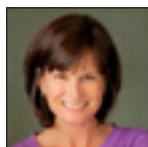
Jodi Womack
The Womack Company



JW Wood
Agri Beef



Sara Wyant
Agri-Pulse Communications



Holly Yeager
Washington State University

Track 2 – Thursday, Nov. 7

1:00 p.m.	Registration	Lobby (Westin)
4:15 p.m.	New to AFA: Hit the Ground Running	Chouteau (Sheraton)
5:00 p.m.	Welcome Session AFA Student Advisory Team Rick Rigsby Mark Stewart, Agriculture Future of America	Exhibit Hall A (Sheraton)
7:15 p.m.	Track Orientation and Group Discussion Track 2 Student Advisory Team	Century AB (Westin)
8:45 p.m.	Ice Cream Connection: Student Networking	Washington Park Place (Westin)

Track 2 – Friday, Nov. 8

7:45 a.m.	Morning Message	Century AB (Westin)
8:00 a.m.	Inclusive Communication Rodeny Patterson, Farm Credit	Century AB (Westin)
9:15 a.m.	Conveying Your Agricultural Message Moderator: Sara Wyant, Agri-Pulse Communications Brian Ahrens, UPL Open Ag Caitlin Beedle, Helena Agri-Enterprises, LLC Laura Handke, Ag Education on the Move Curt Hudnutt, Rabo AgriFinance Kayla Keyser, FLM Harvest Kate Lambert, FCS Financial Brad Leighton, CGB Enterprises, Inc. Claire Masker-King, National Pork Board Micah Mensing, Farm Credit Mid America Brian Meyer, Raven Industries	Century AB (Westin) Ryan Moe, INTL FCStone Inc. Darren Parker, AGCO Corporation Kurt Peterson, Scoular Lindsey Powell, GROWMARK, Inc. Celia Salmon, Elanco Animal Health Laura Sands, K-Coe Isom David Stanko, Nutrien Allen Williams, Archer Daniels Midland Company JW Wood, Agri Beef
10:45 a.m.	Cultivate Your Personal and Professional Brand Courtney White, BASF	Century AB (Westin)
1:00 p.m.	Opportunity Fair	Exhibit Hall B (Sheraton)
3:00 p.m.	The Student's Guide to Professionalism Holly Yeager, Washington State University	Century AB (Westin)
4:10 p.m.	Impact of Personal Reflection Jodi Womack, The Womack Company	Century AB (Westin)
5:15 p.m.	Track meeting	Century AB (Westin)
6:00 p.m.	Leader in Agriculture Award reception	Exhibit Hall B (Sheraton)
7:00 p.m.	Leader in Agriculture Award Dinner	Exhibit Hall A (Sheraton)

Track 2 – Saturday, Nov. 9

8:00 a.m.	Morning message	Century AB (Westin)
8:15 a.m.	Actions Speak Louder Than Words Jan Hargrave, Jan Hargrave and Associates	Century AB (Westin)
10:00 a.m.	The Intangible “It” Jack Stahlmann, Don’t Flinch, LLC	Century AB (Westin)
12:30 p.m.	Civil Discourse Heidi Holliday, Consensus KC Shakedra Knight, Consensus KC	Century AB (Westin)
2:00 p.m.	Diverse Discussions Nate Looney, Westside Urban Gardens	
3:30 p.m.	The Money Game Adam Carroll, National Financial Educators	Century AB (Westin)
5:15 p.m.	Track meeting	Washington Park Place (Westin)
6:00 p.m.	Dinner, entertainment and service project	Exhibit Hall (Sheraton)

Track 2 – Sunday, Nov. 10

7:45 a.m.	Morning message	Century AB (Westin)
8:00 a.m.	Engagement Rules Rhett Laubach, YourNextSpeaker	Century AB (Westin)
9:15 a.m.	Feedback	Century AB (Westin)
9:30 a.m.	Taking Your Leadership With You Rhett Laubach, YourNextSpeaker	Century AB (Westin)
10:15 a.m.	Closing Session Victoria Arlen	Exhibit Hall A (Sheraton)
11:15 a.m.	Adjourn	

Track 3 Student Advisory Team



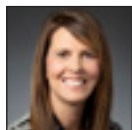
Embracing change in the global food , agricultural and natural resource industry.

(L-R) Chaela Minor, Tanner Keeton, Mercedes McCue and Taylor Lutz Student Advisory Team members assess, plan and facilitate the Track experience for student delegates.

After AFA Leaders Conference, Track 3 delegates will have a better understanding of obstacles they may encounter, what tools and information will assist them in making critical decisions and how to transition into the global marketplace as they navigate change in their lives.

Thank you to all presenters, many of whom volunteer their services, for making this program possible for the next generation of agriculture leaders.

Track 3 Speakers



Camille Abrams
CHS Foundation



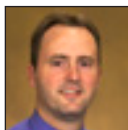
Geoff Andersen
John Deere



Travis Becton
John Deere



Sarah Bohnenkamp



Cory Bollum
Hormel Foods Corporation



Barry Brandstetter
Gavilon, LLC



Adam Carroll
National Financial Educators



Eddie Chesnut
Nationwide Mutual Insurance Company



Justin Chesnut
Elanco Animal Health



Daren Coppock
Agricultural Retailers Association



David Darr
Dairy Farmers of America



Dave Dufault
J.R. Simplot Company



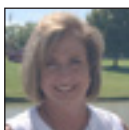
Tracie Egger
AgReliant Genetics



Richard Fagerlin
Peak Solutions



Tracie Gogolin
Wilbur-Ellis



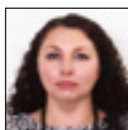
Kelly Goss
Merck Animal Health



Robin Guinn
FCS Financial



Gary Haer
Renewable Energy Group



Nikki Hall
Corteva Agriscience



Ron Hanson
University of Nebraska – Lincoln



Kevin Heikes
In10t



Bill Hendrix
Valent U.S.A., LLC



Mark Herrmann
AgReliant Genetics



Abe Hughes
Trimble Navigation Limited



Clay Jackson
Tractor Supply Co.



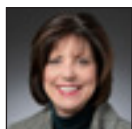
Jeremy Javers
ICM, Inc.



Barbara Jenkins
U.S. Poultry & Egg Association



Scott Kay
BASF



Ruth Kimmelshue
Cargill, Inc.



Bruce Kroese
Union Pacific Railroad



Nathan Laudan
Pennington & Company



Kate Maertens
broadhead



Joel Mathiowetz
Farm Gate Consulting, LLC



Marc Mears
Cargill, Inc.



Alondra Meixueiro
Cactus Feeders



Brian Meyer
Raven Industries



David Nothmann
Valent U.S.A., LLC



Wes Page
Helena Agri-Enterprises, LLC



Steve Petersen
Gowan USA, LLC



Shelly Phalen
Smithfield Foods



Michael Rainwater
Smithfield Foods



Melissa Reinhart
John Deere



Steve Reno
Corteva Agriscience



Krista Scott
The Ohio State University



Todd Sears
AGI SureTrack



Mike Seyfert
FMC Corporation



Heidi Spahn
Corteva Agriscience



Jim Spradlin
GROWMARK, Inc.



Martha Smith
Bayer



David Smoldt
INTL FCStone Inc.



Chris Stallo
American Angus Association



John Starkey
U.S. Poultry & Egg Association



Manda Tweten
Archer Daniels Midland Company



Wes Uhlmeier



Jim Welch
The Growth Leader



Megan Weidner
Bunge North America



Jill Wheeler
Syngenta



Jeff Zyskowski
Ardent Mills

Track 3 — Thursday, Nov. 7

1:00 p.m.	Registration	Gillham Hall (Sheraton)
4:15 p.m.	New to AFA: Hit the Ground Running	Chouteau (Sheraton)
5:00 p.m.	Welcome Session AFA Student Advisory Team Rick RiggsbyMark Stewart, Agriculture Future of America	Exhibit Hall A (Sheraton)
7:15 p.m.	Track orientation Track 3 Student Advisory Team	Atlanta/New York (Sheraton)
8:30 p.m.	Mocktails	Exhibit Hall A (Sheraton)

Track 3 — Friday, Nov. 8

7:45 a.m.	Morning message: Change is the Name of the Game	Atlanta/New York (Sheraton)
8:00 a.m.	Influencers of Change Across Generations Jim Welch, The Growth Leader	Atlanta/New York (Sheraton)
9:00 a.m.	Opportunity Fair	Exhibit Hall B (Sheraton)
11:00 a.m.	Global Trends and Economies in Agriculture and Food Geoff Andersen, John Deere Justin Chesnut, Elanco Animal Health Nikki Hall, Corteva Agriscience	Atlanta/New York (Sheraton)
1:00 p.m.	Managing Career Decisions Courtney White, BASF	Atlanta/New York (Sheraton)
2:15 p.m.	Executive Forum on Stewarding Change Moderator: Teddy Bekele, Land O'Lakes, Inc. Camille Abrams, CHS Foundation Travis Becton, John Deere Cory Bollum, Hormel Foods Corporation Barry Brandstetter, Gavilon, LLC Eddie Chesnut, Nationwide Mutual Insurance Company Daren Coppock, Agricultural Retailers Association David Darr, Dairy Farmers of America Dave Dufault, J.R. Simplot Company Tracie Gogolin, Wilbur-Ellis Kelly Goss, Merck Animal Health Robert Guinn, FCS Financial Gary Haer, Renewable Energy Group Bill Hendrix, Valent U.S.A. LLC Mark Herrmann, AgReliant Genetics Abe Hughes, Trimble Navigation Limited Clay Jackson, Tractor Supply Co. Jeremy Javers, ICM, Inc. Barbara Jenkins, U.S. Poultry & Egg Association Scott Kay, BASF Ruth Kimmelshue, Cargill, Inc.	Atlanta/New York Bruce Kroese, Union Pacific Railroad Marc Mears, Cargill, Inc. Brian Meyer, Raven Industries David Nothmann, Valent U.S.A. LLC Wes Page, Helena Agri-Enterprises, LLC Steve Petersen, Gowan USA, LLC Shelly Phalen, Smithfield Foods Michael Rainwater, Smithfield Foods Steve Reno, Corteva Agriscience Todd Sears, AGI SureTrack Mike Seyfert, FMC Corporation Martha Smith, Bayer David Smoldt, INTL FCStone Inc. Heidi Spahn, Corteva Agriscience Jim Spradlin, GROWMARK, Inc. Chris Stallo, American Angus Association John E. Starkey, U.S. Poultry & Egg Association Manda Tweten, Archer Daniels Midland Company Megan Weidner, Bunge North America Jill Wheeler, Syngenta Jeff Zyskowski, Ardent Mills
5:15 p.m.	Track meeting	Atlanta/New York (Sheraton)
6:00 p.m.	Leader in Agriculture reception	Exhibit Hall B (Sheraton)
7:00 p.m.	Leader in Agriculture Award Dinner	Exhibit Hall A (Sheraton)

Track 3 – Saturday, Nov. 9

8:15 a.m.	Morning message	Atlanta/New York (Sheraton)
8:30 a.m.	Mastery of Money for Students Adam Carroll, National Financial Educators	Atlanta/New York (Sheraton)
10:15 a.m.	Track 3 Breakouts Embracing Innovation in the 21st Century Joel Mathiowetz, Mathiowetz Family Farm The Right Move: Personal and Professional Career Transition Moderator: Melissa Reinhart, John Deere	Atlanta (Sheraton) New York (Sheraton)
1:00 p.m.	Junior Breakout Krista Scott, The Ohio State University Senior Breakout Nathan Laudan, Pennington & Company Kate Maertens, broadhead Alondra Meixueiro, Cactus Feeders	Atlanta (Sheraton) New York (Sheraton)
3:15 p.m.	Track 3 Breakouts Family Dynamics in Agribusiness Ron Hanson, University of Nebraska – Lincoln Navigating an Entrepreneurial Path Kevin Heikes, In10t Wes Uhlmeyer The Next Step: Post Graduate Opportunities in Agriculture Moderator: Tracie Egger, AgReliant Genetics Blazing an Intrapreneurial Trail Sarah Bohnenkamp	Chouteau (Sheraton) Atlanta (Sheraton) New York (Sheraton) Gillham (Sheraton)
5:15 p.m.	Track meeting	
6:00 p.m.	Dinner and entertainment	Exhibit Hall (Sheraton)

Track 3 – Sunday, Nov. 10

8:15 a.m.	Making a Positive Impact Richard Fagerlin, Peak Solutions	Atlanta/New York (Sheraton)
9:30 a.m.	Final Track Wrap-Up Mark Stewart, Agriculture Future of America	Atlanta/New York (Sheraton)
10:15 a.m.	Closing Session Victoria Arlen	Exhibit Hall A (Sheraton)
11:15 a.m.	Adjourn	

Track 4



**Establishing a network of lifelong learners
in food and agriculture.**

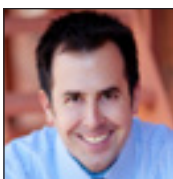
Track 4 is a unique capstone experience for seniors who have been involved in multiple tracks of the AFA program. Building on the competency development from previous years, Track 4 is a highly interactive, participant-directed program. Sessions focus on making the transition from college to career and discussing individual and collective impacts to global agricultural issues. Discussion groups, participant-led facilitation and pre-conference preparation add value to the experience. Extensive executive mentoring is an integral part of Track 4.

Thank you to all presenters, many of whom volunteer their services, for making this program possible for the next generation of agricultural leaders.

Track 4 Speakers



Rachel Biggs
K-Coe Isom



Corey Ciocchetti
University of Denver



Jodi Doyle
Renewable Energy Group



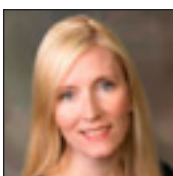
Christine Enge
AGCO Corporation



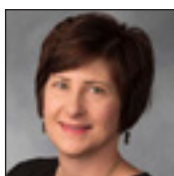
Michelle Esposito
Bayer



Andrew Etheredge
Cactus Feeders



Rachel Giannini
AGCO Corporation



Ann Kafer
GROWMARK, Inc.



Jill Leitzen
Kuhn North America, Inc.



Katie Lenway
Hormel Foods Corporation



Chris Long
Syngenta



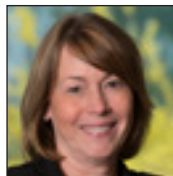
Todd Long
Leadership Innovations



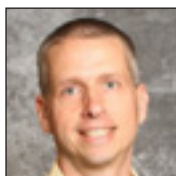
Fayley Meade
Wilbur-Ellis



Tyne Morgan
Farm Journal



Margan Mulvaney
Merck Animal Health



Steve Neely
Ardent Mills



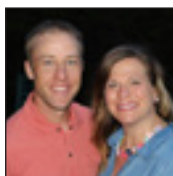
Dennis Padgett
Cobb-Vantress, Inc.



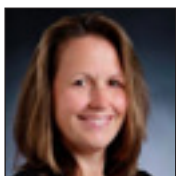
Ryan Penner
Tyson Foods, Inc.



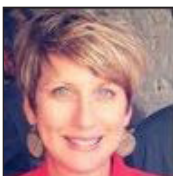
Kurt Peterson
Scoular



**Garrett and Cara
Riekhof**
GR Farms



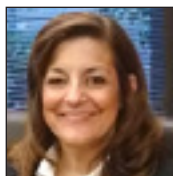
Kristin Rokosky
FMC Corporation



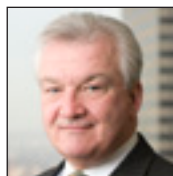
Joan Spaeth
Riverview, LLP



Mark Stewart
Agriculture Future of
America



Julie Venierakis
Valent U.S.A., LLC



Andy Weber
Farm Journal



**Charlotte Westerhaus-
Renfrow**
Change Pro, LLC



Jason Womack
The Womack Company



Jake Worcester
Kansas 4-H Foundation

Track 4 – Thursday, Nov. 7

1:00 p.m.	Registration	Lobby (Westin)
2:00 p.m.	Track 4 welcome and orientation Matt Brillhart, Agriculture Future of America Jake Worcester, Kansas 4-H Foundation	Liberty (Westin)
5:00 p.m.	Welcome session AFA Student Advisory Team Rick Rigsby Mark Stewart, Agriculture Future of America	Exhibit Hall A (Sheraton)
7:15 p.m.	Facilitation Training Todd Long, Leadership Innovation	Liberty (Westin)

Track 4 – Friday, Nov. 8

7:45 a.m.	Morning meeting	Liberty (Westin)
8:00 a.m.	Building the New Leader Jake Worcester, Kansas 4-H Foundation	Liberty (Westin)
9:00 a.m.	Opportunity Fair	Exhibit Hall B
11:15 a.m.	Lunch preparation Traci Via, Agriculture Future of America	Empire (Sheraton)
11:45 a.m.	AFA Board of Directors' Luncheon	Empire (Sheraton)
1:15 p.m.	Transition to Work Rachel Biggs, K-Coe Isom Jodi Doyle, Renewable Energy Group Christine Enge, AGCO Corporation Michelle Esposito, Bayer Andy Etheredge, Cactus Feeders Rachel Giannini, AGCO Corporation Ann Kafer, GROWMARK, Inc. Jill Leitzen, Kuhn North America, Inc. Katie Lenway, Hormel Foods Corporation Chris Long, Syngenta Fayley Meade, Wilbur-Ellis Margan Mulvaney, Merck Animal Health Steve Neely, Ardent Mills Dennis Padgett, Cobb-Vantress, Inc. Ryan Penner, Tyson Foods, Inc. Kurt Peterson, Scoular Kristin Rokosky, FMC Corporation Joan Spaeth, Riverview, LLP Julie Venierakis, Valent U.S.A. LLC	Liberty (Westin)
2:15 p.m.	Open Mic: Better Together Moderator: Tyne Morgan, Farm Journal Media Garrett and Cara Riekhof, GR Farms Andy Weber, Farm Journal	Liberty (Westin)
4:15 p.m.	Productivity Secrets: Advanced Time Management Jason Womack, The Womack Company	Liberty (Westin)
5:15 p.m.	Track meeting	Liberty (Westin)

Track 4 – Saturday, Nov. 9

6:00 p.m.	Leader in Agriculture reception	Exhibit Hall B (Sheraton)
7:00 p.m.	Leader in Agriculture Award Dinner	Exhibit Hall A (Sheraton)
8:15 a.m.	Morning meeting	Liberty (Westin)
8:30 a.m.	Cultivate an Authentic Life Corey Ciocchetti, University of Denver	Liberty (Westin)
11:00 a.m.	Leadership Conversation Mark Stewart, Agriculture Future of America	Liberty (Westin)
1:00 p.m.	Respect and Inclusion: A Young Professional's Guide Charlotte Westerhaus-Renfrow, ChangePro, LLC	Liberty (Westin)
4:15 p.m.	It's All in the Experience with Track 1 Moderators: Gus Gill, Colorado State University, and Morgan Lambrecht, Purdue University	San Francisco/ Chicago (Sheraton)
6:30 p.m.	Dinner and networking with AFA Alliance	Rockhill Grille (off site)

Track 4 – Sunday, Nov. 10

7:45 a.m.	Morning message	Liberty (Westin)
8:00 a.m.	Pursuing Lifelong Leadership Jake Worcester, Kansas 4-H Foundation Alliance Members	Liberty (Westin)
9:00 a.m.	Track Wrap-up and Feedback	Liberty (Westin)
10:15 a.m.	Closing session Victoria Arlen	Exhibit Hall A (Sheraton)
11:15 a.m.	Adjourn	

AFA Board of Directors



Camille Abrams
Senior VP Finance,
Energy, Processing,
Food Ingredients
CHS Inc.



Jay Akridge
Provost and Executive
VP for Academic Affairs
and Diversity
Purdue University



Travis Becton
Director of Sales,
U.S. & Canada
John Deere



Teddy Bekele
Chief Technology Officer
Land O'Lakes, Inc.



Darren Coppock
President & CEO
Agricultural Retailers
Association



Rolando Flores
Dean College of
Agricultural, Consumer
and Environmental
Sciences
New Mexico State
University



Abe Hughes
General Manager -
Agriculture Division
Trimble Navigation
Limited



Scott Kay
Vice President,
U.S. Crop
BASF



Ruth Kimmelshue
Corporate Senior Vice
President, Business
Operations & Supply
Chain
Cargill, Inc.



Joel Mathiowetz
Mathiowetz Family Farms



David Nothmann
Vice President, Marketing
Valent U.S.A. LLC



Rodney Patterson
Farm Credit



Shelly Phalen
Senior Vice President,
Business Management
Fresh Pork
Smithfield Foods



Steve Reno
President
Seed Business Platform
Corteva Agriscience



Gwyn Schramm
Vice President and
Head of Global Market
Development Center of
Excellence
Bayer



Mark Stewart
President and CEO
Agriculture Future of
America



Wes Uhlmeier



Megan Weidner
VP, Corporate
Responsibility and
Sustainability
Bunge North America



Sandy Kemper
Chairman & Founder
C2FO



J. Mariner Kemper
Chairman and CEO
UMB Financial
Corporation



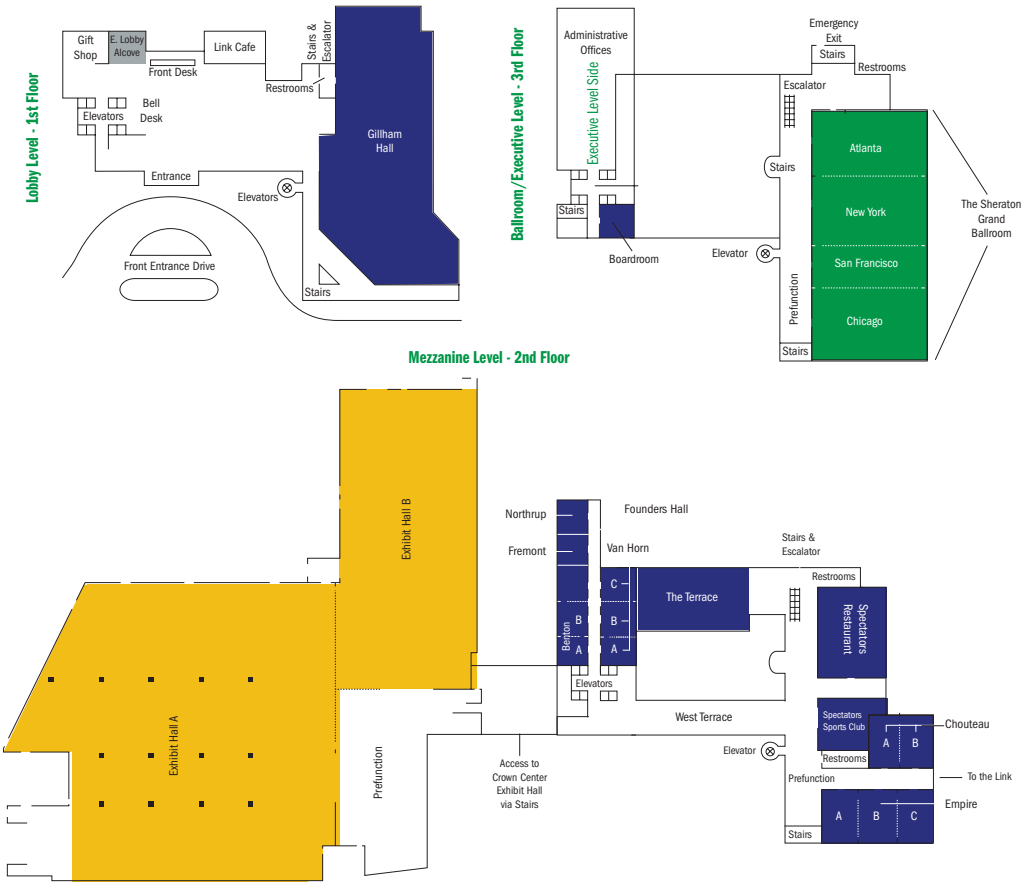
L. Joshua Sosland
Vice President
Sosland Publishing
Company



K. Russell Weathers
Chairman
Agriculture Future of
America

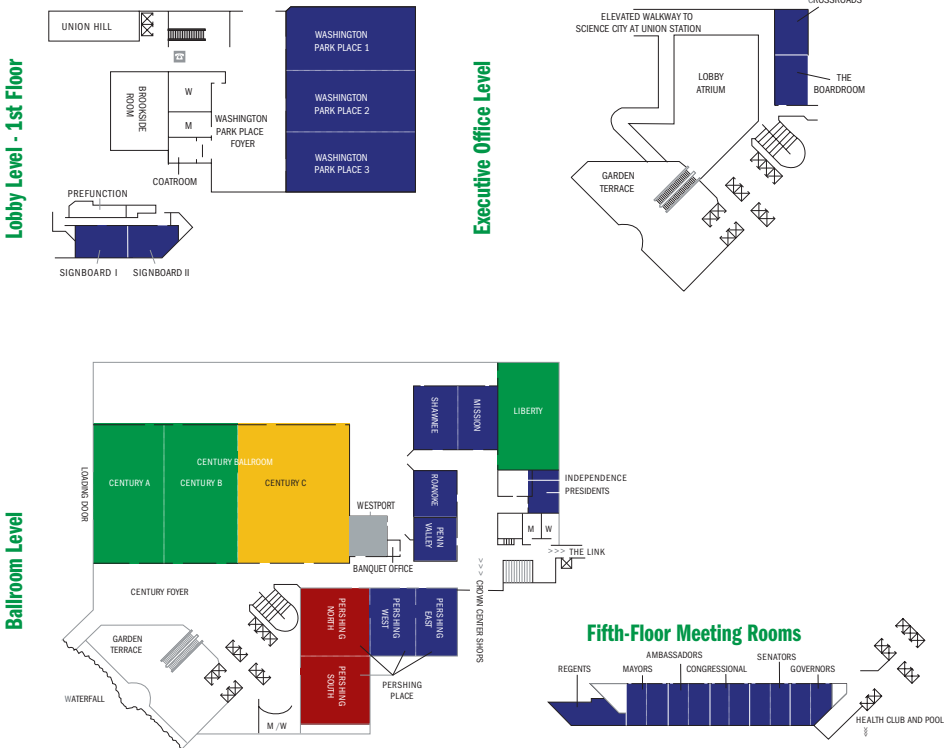
Sheraton Kansas City Hotel at Crown Center
2345 McGee Street
Kansas City, MO 64108

Main Sessions, Meals & AFA Opportunity Fair Track Rooms Breakouts & Partner Breakfasts AFA Conference Office



The Westin Kansas City at Crown Center
1 E Pershing Road
Kansas City, MO 64108

Meals Track Rooms Breakouts & Partner Breakfasts AFA Alliance AFA Conference Office





Agriculture Future of America

www.agfuture.org

@AgFutureAmerica

#AFALC19