



FUE

BETTER TOGETHER

AFA exists to be a catalyst in the preparation
of a new generation of agriculture leaders.

Fuse: Better Together



An artist designs the masterpiece carefully, taking this piece and attaching it to that, deftly welding a joint stronger than either of the two halves, making something that truly is better together.

Similarly, agriculture and food are made stronger when each of us brings our talents, ideas, backgrounds and experiences to the table and allow them to shape solutions we can pursue together.

Here's the thing. There's a lot you don't know about me. You might think you could figure out my story from how I look or talk, but if you try, there is so much you'd miss. The same is true of you. There is so much underneath; so many shaping experiences that have melded you into who you are today.

When we bring our different backgrounds and ideas, thoughts and experiences together through a catalyst like Agriculture Future of America, we develop a stronger, more impactful future for agriculture and food.

This is the hard part, though. For fusion to occur, the barriers and exteriors must be melted. These strong joints are not formed by cold metal. The pieces are only fused under intense heat.

This year, we're asking you to dig a little deeper. Dig deeper into agriculture's story. Keep your eyes and ears open to the stories of those around you. Listen for opportunities that you never would have considered. Learn what your part in all of this is. None of us has all the answers, but together we can find solutions.

Agriculture is measured in seasons, and each new season brings another chance for us to be better together. Your success does not diminish mine. This isn't a puzzle with finite edges. Agriculture and food are dynamic and keep evolving alongside society.

Here at AFA Leaders Conference we commit to finding common ground. We commit to looking at our differences with each other and those agriculture serves as opportunities, instead of challenges. What we learn here we will take back to our campuses and into our careers. As a generation we will create bonds that fuse the industry and make it so much better together.

Welcome to AFA Leaders Conference



I had the privilege of playing on a couple of national championship football teams in college. Because of this experience, I understand the concept of fusing people, passions, perspectives, skills and strengths together for a greater good. There is no greater feeling than success as a result of the fusion of diverse parts to make a profound whole.

Let's be honest — it's not easy. I'm not even sure our coaches knew what they were doing other than they were committed to finding great people who could buy into a greater purpose than self. These are prerequisites for fusion.

As human beings, we have tendency to be selfish. To truly fuse with a group of people in a way that makes everyone profoundly better, you have to forget a little bit about self. To describe this, we use terms like servant leadership and valuing perspectives.

Over the next few days, try to think less about self and understand your peers better — the ones who didn't come from your part of the country; who don't look like you; who have different beliefs. Listen to understand. When you do that well, you will Fuse and we will be Better Together!

Mark E. Stewart
President & CEO

AFA Staff

K. Russell Weathers, Chairman

Mark Stewart, President & CEO

Nancy Barcus, Chief Operating Officer

Programs

Jenna Baldwin

Matt Brillhart

Amy Crippen

Topanga McBride

Denise O'Dell

Johnna Wallingford

External Relations

Chelsey Buseck

Ashley Collins

Megan Karlin

Traci Via

Business Operations

Lindale Banks

Mayela Esser

Leila Jones

Joanne Kao

Volunteers

AFA sincerely appreciates the volunteers who make Conference possible.

AFA Student Leaders



Industry Schedule

This schedule lists all activities open to industry participation. Certain activities are reserved as partner benefits. **All activities require prior registration.** If you have any questions, please contact Traci Via at 816-820-1740.

Thursday, Nov. 1

1:30 p.m.	Check-in begins	Lobby (Sheraton)
7:00 p.m.	Mocktails check-in	Lobby (Sheraton)
9:00 p.m.	Mocktails (Leader Partner benefit—\$25,000+)	Exhibit Hall A (Sheraton)

Friday, Nov. 2

6:00 a.m.	Opportunity Fair setup and check-in	Exhibit Hall B (Sheraton)
7:00 a.m.	Agribusiness Council of Kansas City breakfast (pre-registration required)	Empire Room (Sheraton)
9:00 a.m.	Opportunity Fair	Exhibit Hall B (Sheraton)
11:45 a.m.	AFA Board of Directors lunch (invitation only)	Empire Room (Sheraton)
12:00 p.m.	Opportunity Fair lunch (ticketed event)	Exhibit Hall A (Sheraton)
6:00 p.m.	Leader in Agriculture Award reception	Exhibit Hall B (Sheraton)
7:00 p.m.	Leader in Agriculture Award Dinner (pre-registration required)	Exhibit Hall A (Sheraton)

Saturday, Nov. 3

7:00 a.m.	Partner breakfasts (Leader Partner benefit—\$25,000+)	Various Rooms
-----------	---	---------------

Collegiate Schedule

This schedule lists all activities open to collegiate liaisons. **Some activities require prior registration.** If you have any questions, please contact Ashley Collins at 704-692-7719.

Thursday, Nov. 1

1:30 p.m.	Check-in Begins	Gillham Hall (Sheraton)
6:00 p.m.	Reception with AFA Board of Directors	VanHorn (Sheraton)

Friday, Nov. 2

6:00 p.m.	Leader in Agriculture Award reception	Exhibit Hall B (Sheraton)
7:00 p.m.	Leader in Agriculture Award Dinner (Pre-Registration Required)	Exhibit Hall A (Sheraton)

Saturday, Nov. 3

8:30 a.m.	AFA Collegiate Liaison breakfast	Spectators (Sheraton)
9:30 a.m.	AFA Collegiate Liaison update	Empire A (Sheraton)

2018 AFA Student Leaders (left to right) **Back row:** Amanda Kowalewski, *University of Nebraska — Lincoln*; Allyson Lintker, *Southern Illinois University — Carbondale*; Fabian Leon, *University of Kentucky*; Allison Stiens, *University of Missouri*; Madelyn Regier, *South Dakota State University*; Tucker Milholland, *West Texas A&M University*; Michael Tupper, *Iowa State University*; Samantha Wagner, *Michigan State University*; Zach Jacobs, *Virginia Tech*; and Colm Allan, *Washington State University*. **Middle row:** Bethany Gochenour, *Clemson University*; Julia Maddock, *Kansas State University*; Emily Lewis, *University of Tennessee — Martin*; Katie Haase, *Northwest Missouri State University*; Dylan Schoemaker, *The Pennsylvania State University*; Micah Mensing, *The Ohio State University*; Morgan Meyers, *University of Idaho*; Madelyn Kunzler, *Utah State University*; and Becca Frazier, *Purdue University*. **Front row:** Sam Grams, *University of Wisconsin — Platteville*; Allison Wilton, *Oklahoma State University*; Jared Retzlaff, *University of Wisconsin — River Falls*; Kara Brockamp, *University of Illinois at Urbana — Champaign*; Monica Pennewitt, *The Ohio State University*; Allie Mostecak, *North Carolina State University*; and Joe Ramstad, *University of Minnesota — Twin Cities*.

AFA extends its appreciation to the following individuals, businesses, corporations, institutions and associations that contribute to the overall success of the organization as crucial partners in the preparation of new leaders in the industry. Their ongoing support is vital to the success of this Conference and the many other programs and services provided by AFA.

Investments \$100,000 to \$249,999



Enid and Crosby Kemper Foundation
R.C. Kemper Charitable Trust

William T. Kemper Trust

Investments \$50,000 to \$99,999



Arvin Gottlieb
Charitable Foundation

Investments \$25,000 to \$49,999



AFA thanks the following partners who have contributed to the success of the 2018 AFA Leaders Conference. A full list of AFA partners can be found at www.agfuture.org/IndustryPartners.

Investments \$10,000 to \$24,999

AGCO
American Egg Board
American Royal Association
Belles of the American Royal
BNSF Railway
California Cotton Alliance
Dairy Farmers Of America
Gavilon, LLC
Hunter Legacy Family Foundation
Kansas Corn Growers Association
LEWMAR Foundation
Metlife Agricultural Finance
National Crop Insurance Services
National Pork Board
National Corn Growers Association

Nationwide
Nebraska Corn Board
Nufarm Americas, Inc.
Ohio Corn and Wheat Growers Association
Georgia and Bob Richter
Rabo AgriFinance
Roderick J. and Jo Anne Cyr Foundation
Seaboard Foods
The Sosland Foundation
The Stanley H. Durwood Foundation
St. Joseph Area Chamber of Commerce
Trimble
Tyson Foods, Inc.
Union Pacific Railroad

Investments \$5,000 to \$9,999

AgReliant Genetics
Agri Beef
Alltech
American Soybean Association
Cactus Feeders
Ceva Animal Health
Compass Minerals
Farmers Mutual Hail Insurance Company of Iowa

FCS Financial
FLM Harvest
Greater KC Community Foundation
Iowa Corn Growers Association
J.R. Simplot Company
Kansas Department of Agriculture
Missouri Corn Merchandising Council
Raven Industries

Investments \$1,000 to \$4,999

AgriBank, FCB
Agricultural Retailers Association
American Farm Bureau Federation
Association of Missouri Electric Cooperatives
FCS of America
Green Plains, Inc.
Growth Energy
Hormel Foods
K-Coe Isom
Kansas Agribusiness Retailers Association
Kansas Grain and Feed Association

MFA Foundation
Michigan State University
Minnesota Pork Board
Missouri Department of Agriculture
Missouri Pork Association
Missouri Soybean Merchandising Council
National Association of Conservation Districts
Nestle Purina Petcare Company
PepsiCo
Renewable Energy Group

University Partners — providing delegate sponsorship

Alcorn State University
Auburn University
Butler Community College
Colorado State University
Cornell University
Huntington University
Illinois State University
Iowa State University
Kansas State University
Louisiana State University
Michigan State University
Missouri State University
Murray State University
North Dakota State University
Northwest Missouri State University
Oklahoma State University
Purdue University
South Dakota State University

Texas A&M University
Texas Tech University
The Ohio State University
The Ohio State University ATI
University of California Davis
University of Florida
University of Idaho
University of Illinois
University of Kentucky
University of Maryland — College Park
University of Minnesota
University of Missouri
University of Wisconsin — Platteville
University of Wisconsin — River Falls
Utah State University
Virginia Tech
Washington State University
Wilmington College

In-kind These partners provided in-kind support for the 2018 AFA Leaders Conference.

Harvest Productions
Highland Dairy - KC
Hallmark Cards, Inc.

Ricoh USA, Inc.
Sheraton and Westin Kansas City Hotels at Crown Center

Agriculture Future of America

AFA creates partnerships that identify, encourage and support outstanding young people pursuing careers in agriculture. AFA is nationally recognized for its excellence in leader training and career development for college students and young professionals in the agricultural and food industry.

AFA Leaders Conference



AFA Leaders Conference is a key component of AFA's leader and career development training program. This forum provides students an opportunity to develop key competencies to enhance their marketable skills. Agricultural businesses, organizations, associations, institutions and individuals invest in this program as a means to develop human capital for our industry.

At Conference, students participate in one of four program tracks with the following emphases:

Track 1 — Personal assessment and career preparation

Track 2 — Communication and relationship-building skills

Track 3 — Managing change and preparing to live and work in a global marketplace

Track 4 — Lifelong learning and industry awareness

Learn more about each specific track in the next pages. All AFA delegates, industry professionals and volunteers are invited to share their thoughts about the 2018 AFA Leaders Conference via social media using **#AFALC18**. Find us there, too!



Keynote Speakers



**Captain Charlie
Plumb**



Mark Stewart
Agriculture Future America



Jonathan Sprinkles

AFA Opportunity Fair



Agriculture Future of America connects college students to opportunities for career development in business, production, education, science and technology.

The AFA Opportunity Fair is designed to give participating organizations a competitive edge in the identification of human capital. AFA connects students and employers based on shared interests.

During the AFA Opportunity Fair, students learn about available internships and full-time employment opportunities, as well as graduate school and international study programs. Recruiters are eager to share their definitions of agriculture and explore opportunities to help students create stronger personal and professional portfolios through internships or full-time employment.

2018 AFA Opportunity Fair Participants

AgCareers.com	Elanco Animal Health	Missouri Department of Agriculture
AGCO	Farm Credit	National Association of Conservation Districts
AgGrad	Farmers Mutual Hail Insurance Company of Iowa	National Association of State Departments of Agriculture
AgReliant Genetics	FLM Harvest	National Corn Growers Association
Agri Beef	FMC Corporation	National Crop Insurance Services
AgriCorps	Gavilon, LLC	National FFA Organization
Agricultural Retailers Association	Gowan USA, LLC	National Pork Board
Agriculture Future of America	Great Plains Manufacturing, Inc.	Nationwide
Alltech	Green Plains, Inc.	Nestle Purina Petcare Company
American Royal Association	GROWMARK, Inc.	Nutrien
Archer Daniels Midland Company	Helena Agri-Enterprises, LLC	Rabo AgriFinance
Ardent Mills	Hormel Foods	Raven Industries
Association of Missouri Electric Cooperatives	Hurley & Associates, Inc.	Renewable Energy Group
Bader Rutter	ICM, Inc.	Riverview, LLP
BASF	IFYE Association of the USA, Inc.	Rock Springs 4-H Center
Bayer	INTL FCStone, Inc.	Scoular
BNSF Railway	Iowa Corn Growers Association	Seaboard Foods
Bunge North America	J.R. Simplot Company	Smithfield Foods
Cactus Feeders	JBS	Syngenta
Cargill, Inc.	K-Coe Isom	The Mennel Milling Company
Central Valley Ag Coop	Kansas City Southern	Trimble
Ceva Animal Health	Kansas Corn Growers Association	Tyson Foods, Inc.
CGB Enterprises, Inc.	Kansas State University	Union Pacific Railroad
CHS Inc.	Kuhn North America, Inc.	United States Department of Agriculture
Compass Minerals	Land O' Lakes, Inc	University of Missouri
Corteva Agriscience	Loma Vista Nursery	UNL Doctor of Plant Health
CropLife America	MANRRS	Valent U.S.A. LLC
Cultivating Change Foundation	Merck Animal Health	Wilbur-Ellis Company
Dairy Farmers of America	MetLife Agricultural Finance	
Deere & Company	MFA Incorporated	

Track 1 Student Advisory Team



(L-R) Becca Fraizer, Colm Allan, Zach Jacobs

Student Advisory Team members assess, plan and facilitate the Track experience for student delegates.

The pillar of the Track 1 program is self assessment. Understanding your talents, skills, values and motivations is important to finding the right career path, activating personal growth and defining your contribution to the agricultural community. Self awareness leads to a higher level of cognition and ability to work with those around you in order to reach your potential.

Thank you to all presenters, many of whom volunteer their services, for making this program possible for the next generation of agricultural leaders.

Track 1 Speakers



Taylor Armstrong
Wilbur-Ellis
Company



Amy Baldwin
BASF



Dianna Bell
Smithfield Foods



Charles Benson
BASF



Tiffany Berndt
Smithfield Foods



Katie Birchfield
Seaboard Foods



Travis Boatwright
Merck Animal Health



Sarah Bohnenkamp



Kellie Bray
CropLife America



Dan Brunnert
FranklinCovey



Chelsea Carter
Deere & Company



Travis Clark
Gavilon, LLC



Christina Coen
FMC Corporation



Zachary Corcoran
Nutrien



Teresa Decker
Land O'Lakes, Inc.



Kylee Deniz
National Pork Board



Tina Dornier
CHS Inc.



Valerie Drager
Agri Beef



Grant Ermis
Cultivating Change
Foundation



Kristy Farthing
CGB Enterprises,
Inc.



Deanna Flynn
Nutrien



Alan Freeman
Missouri Dept. of Ag



Stephanie Graham
FLM Harvest



Maggie Jo Hansen
Tyson Foods, Inc.



Thomas Heady
Elanco Animal
Health



Laura Higgins
Corteva Agriscience



Kaleb Houston
Land O'Lakes, Inc.



Abby Johnson
Nestle Purina Petcare
Company



JJ. Jones
Roots and Legacies
Consulting, Inc.



Matthew Kirkpatrick
Valent U.S.A. LLC



Kate Lambert
FCS Financial



Mignon Lambley
BNSF Railway



Daniel Lane
MetLife Agricultural
Finance



Kristie Larson
American Royal
Association



Brian Lary
Gavilon, LLC



Jill Leitzen
Kuhn North
America, Inc.



Josh Ligon
Cargill, Inc.



Nanci Lilja
CHS Foundation



Megan Marshall
Dairy Farmers of
America



Ryan Mass
ICM, Inc.



Mindy McBee
Cargill, Inc.



Dawn Melikant
Farm Credit Mid
America



Dana Miller
Smithfield Foods



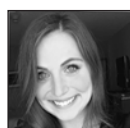
Ryan Molitor
Raven Industries



Russell Montgomery
Scoular



Alana Muller
Alana Muller
Enterprises, LLC



Laura Muren
Helena Agri-
Enterprises, LLC



Sherri Nash
Gowan USA, LLC



Lisa Nichols
Nutrien



Marcie Oppold
Archer Daniels
Midland Company



Jennifer Overholt
BASF



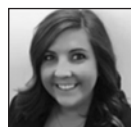
Michelle Pace
INTL FCStone, Inc.



Angela Perkins
Bayer CropScience



Emily Peters
Union Pacific
Railroad



Kayla Portwood
GROWMARK, Inc.



Kimberly Raimondi
Nutrien



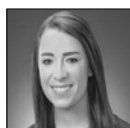
Drew Ratterman
Corteva Agriscience



Marci Rhind
Compass Minerals



Anthony Roy
Ardent Mills



Celia Salmon
Elanco Animal
Health



Jeff Scharping
ICM, Inc.



Angela Scott
Tyson Foods, Inc.



Ashley Searles
Farm Credit Mid
America



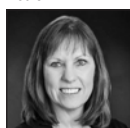
Emily Severt
Smithfield Foods



Cecil Shelton
Cultivating Change
Foundation



Bill Smith
Helena Agri-
Enterprises, LLC



Tami Smith-Rohovit
Farmers Mutual Hail
Insurance Company
of Iowa



Krista Soda
Nationwide



Grant Suhre
Deere & Company



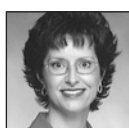
Danelle Svare
Green Plains, Inc.



Robin Thomas
Syngenta



Terri Thompson
Terri Thompson
Presents



Susie Thompson



Ellen Thompson
National Teach Ag
Campaign



Shawnda Thompson
FLM Harvest



Dennis Toalson
Archer Daniels
Midland Company



Melissa Traffas
ICM, Inc.



Amy Utterback
Bayer



Christy VanVickle
INTL FCStone, Inc.



Lori Vogelintanz
Land O'Lakes, Inc.



Randi Walden
Alltech



Haley Warner
Union Pacific
Railroad



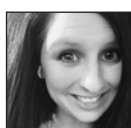
Caroline Wehl
Meals Beyond
Athletes



Alex Williams
Ardent Mills



Kyle Wright
Dairy Farmers of
America



Kristin Wyckoff
Livestock Marketing
Association



Katie Youngdahl
Trimble



Ellen Zimmerman
American Seed
Trade Association

Track 1 – Thursday, Nov. 1

1:00 p.m.	Registration	Lobby (Sheraton)
4:15 p.m.	New to AFA: Hit the Ground Running	Chouteau (Sheraton)
5:00 p.m.	Welcome session AFA Student Advisory Team Captain Charlie Plumb Mark Stewart, Agriculture Future of America	Exhibit Hall A (Sheraton)
7:15 p.m.	Track orientation and group discussion Track 1 Student Advisory Team	San Francisco/Chicago (Sheraton)
8:45 p.m.	Ice Cream Connection: student networking	Washington Park Place (Westin)

Track 1 – Friday, Nov. 2

7:45 a.m.	Morning message	San Francisco/Chicago (Sheraton)
8:00 a.m.	Sparkling Your Professional Career: Resumes and Networking Speaker: Alana Muller, Alana Muller Enterprises, LLC Dianna Bell, Smithfield Foods Tiffany Berndt, Smithfield Foods Katie Birchfield, Seaboard Foods Chelsea Carter, Deere & Company Travis Clark, Gavilon, LLC Teresa Decker, Land O'Lakes, Inc. Tina Dörner, CHS Foundation Valerie Dräger, Agri Beef Kristy Farthing, CGB Enterprises, Inc. Deanna Flynn, Nutrien Stephanie Graham, FLM Harvest Thomas Heady, Elanco Animal Health Daniel Lane, MetLife Agricultural Finance Jill Leitzen, Kuhn North America, Inc. Josh Ligon, Cargill, Inc. Megan Marshall, Dairy Farmers of America Laura Muren, Helena Agri-Enterprises, LLC Sherri Nash, Gowan USA, LLC Marcie Oppold, Archer Daniels Midland Company	San Francisco/Chicago (Sheraton) Jennifer Overholt, BASF Kayla Portwood, GROWMARK, Inc. Kimberly Raimondi, Nutrien Drew Ratterman, Corteva Agriscience Angela Scott, Tyson Foods, Inc. Ashley Searles, Farm Credit Mid America Tami Smith-Rohovit, Farmers Mutual Hail Insurance Company of Iowa Krista Soda, Nationwide Danelle Svare, Green Plains, Inc. Robin Thomas, Syngenta Shawnda Thompson, FLM Harvest Meiissa Traffas, ICM, Inc. Amy Utterback, Bayer Christy VanVickle, INTL FCStone, Inc. Randi Walden, Alltech Alex Williams, Ardent Mills Kyle Wright, Dairy Farmers of America, Inc. Kristin Wyckoff, Livestock Marketing Association
10:45 a.m.	Opportunity Fair	Exhibit Hall B (Sheraton)
12:00 p.m.	Professional Etiquette in Dining Terri Thompson, Terri Thompson Presents	San Francisco/Chicago (Sheraton)
1:45 p.m.	Leading in Inclusive Environments Cecil Shelton, Grant Ermis and J.J. Jones, Cultivating Change Foundation	Gillham Hall (Sheraton)
3:00 p.m.	Discovering Career Paths in Agriculture Moderator: Kristie Larson, American Royal Association and Kellie Bray, CropLife America Taylor Armstrong, Wilbur-Ellis Company Amy Baldwin, BASF Charles Benson, BASF Travis Boatwright, Merck Animal Health Christina Coen, FMC Corporation Zachary Corcoran, Nutrien Kylee Deniz, National Pork Board Alan Freeman, Missouri Department of Agriculture Maggie Jo Hansen, Tyson Foods, Inc. Laura Higgins, Corteva Agriscience Kaleb Houston, Land O'Lakes, Inc. Abby Johnson, Nestle Purina Petcare Company Matthew Kirkpatrick, Valent U.S.A. LLC Kate Lambert, FCS Financial Mignon Lambley, BNSF Railway Brian Lary, Gavilon, LLC Nanci Lilja, CHS Foundation Ryan Mass, ICM, Inc. Mindy McBee, Cargill, Inc.	San Francisco/Chicago (Sheraton) Dawn Melikant, Farm Credit Dana Miller, Smithfield Foods Ryan Molitor, Raven Industries Russel Montgomery, Scoular Lisa Nichols, Nurtien Michelle Pace, INTL FCStone Inc. Angela Perkins, Bayer CropScience Marc Rhind, Compass Minerals Anthony Roy, Ardent Mills Celia Salmon, Elanco Animal Health Jeff Scharping, ICM, Inc. Emily Severt, Smithfield Foods Bill Smith, Helena Agri-Enterprises, LLC Grant Suhre, Deere & Company Robin Thomas, Syngenta Dennis Toalson, Archer Daniels Midland Company Lori Vogeltanz, Land O'Lakes, Inc. Haley Warner, Union Pacific Railroad Katie Youngdahl, Trimble

Track 1 – Saturday, Nov. 3

5:00 p.m.	Track meeting	San Francisco/Chicago (Sheraton)
6:00 p.m.	Leader in Agriculture Award reception	Exhibit Hall B (Sheraton)
7:00 p.m.	Leader in Agriculture Award Dinner	Exhibit Hall A (Sheraton)
8:00 a.m.	Morning message	San Francisco/Chicago (Sheraton)
8:15 a.m.	Kickstart Your Creativity Sarah Bohnenkamp	San Francisco/Chicago (Sheraton)
9:10 a.m.	Dressing for Success in the 21st Century Terri Thompson, Terri Thompson Presents	Exhibit Hall A (Sheraton)
10:00 a.m.	AFA Leader Fellowship™ overview Amy Crippen, Agriculture Future of America	Exhibit Hall A (Sheraton)
11:00 a.m.	Balancing Personal Priorities Caroline Wiehl, Meals Beyond Athletes Ellen Zimmerman, American Seed Trade Association Emily Peters, Union Pacific Railroad Dan Brunnert, FranklinCovey	Empire B (Sheraton) Van Horn (Sheraton) Benton (Sheraton) Empire C (Sheraton)
1:30 p.m.	Balancing Personal Priorities (Cont.)	
4:15 p.m.	It's All in the Experience Elizabeth Galbreath, BASF	San Francisco/Chicago (Sheraton)
5:15 p.m.	Track meeting	San Francisco/Chicago (Sheraton)
6:00 p.m.	Dinner and entertainment	Exhibit Hall (Sheraton)

Track 1 – Sunday, Nov. 4

7:45 a.m.	Morning message	San Francisco/Chicago (Sheraton)
8:00 a.m.	Unleashing the Most Positive You Susie Thompson	San Francisco/Chicago (Sheraton)
9:45 a.m.	Track Wrap-up and feedback	San Francisco/Chicago (Sheraton)
10:15 a.m.	Closing session Jonathan Sprinkles	Exhibit Hall A (Sheraton)
11:15 a.m.	Adjourn	

Track 2 Student Advisory Team



(L-R) Jared Retzlaff, Monica Pennewitt, Fabian Leon

Student Advisory Team members assess, plan and facilitate the Track experience for student delegates.

Your ability to communicate effectively is crucial to success in both personal and professional relationships. Whether it be written, verbal, nonverbal or online, these skills will be the determining factors to accomplishing your goals. Track 2 will help you further develop and enhance your communication skills, critical thinking, teamwork, and personal ethics through connections made with your peers, panelists and speakers.

Thank you to all presenters, many of whom volunteer their services, for making this program possible for the next generation of agricultural leaders.

Track 2 Speakers



Terry Abbott
Wilbur-Ellis Company



Jeneen Abrams
MANRRS



Matt Amick
Missouri Corn Growers
Association



Ryan Bartlett
Compass Minerals



Charles Benson
BASF



Adam Carroll
National Financial
Educators



Brian Celli
AGCO



Sonali Dalvi
PepsiCo



David Decapp
Farmers Mutual Hail
Insurance Co. of Iowa



Ryan Emery
CGB Enterprises, Inc.



Jake Espenmiller
MetLife Agricultural
Finance



Leighton Eusebio
Green Plains, Inc.



Mara Gordon
Land O'Lakes, Inc.



Derek Greenfield
Greenfield &
Associates



Maggie Jo Hansen
Tyson Foods, Inc.



Jan Hargrave
Jan Hargrave &
Associates



Carleane Hawkins
The Candy Group



Dustin Johansen
Osborn Barr



Sarah Kollé
Rabo AgriFinance



Rhett Laubach
YourNextSpeaker



Kelly Manning
Growth Energy



Stacy Mayo-Martinez
Kansas Corn Growers
Association



Dana Redman
Kuhn North America,
Inc.



Dawn Refsell
Valent U.S.A., LLC



Ann Schlueter
Community Hospital-
Fairfax



Pete Stoddart
Cargill, Inc.



Terri Thompson
Terri Thompson
Presents



Ellen Thompson
National Teach Ag
Campaign



Tiffany Turner
Deere & Company



Jeremy Unruh
Deere & Company



Alec Virgil
Greenfield &
Associates



Kerry Wefald
Kansas Dept. of
Agriculture



Allen Williams
Archer Daniels
Midland Company



Sara Wyant
Agri-Pulse
Communications



**Meleesa
Younggreen Grate**
The Grate Group

Track 2 – Thursday, Nov. 1

1:00 p.m.	Registration	Lobby (Westin)
4:15 p.m.	New to AFA: Hit the Ground Running	Chouteau (Sheraton)
5:00 p.m.	Welcome Session AFA Student Advisory Team Captain Charlie Plumb Mark Stewart, Agriculture Future of America	Exhibit Hall A (Sheraton)
7:15 p.m.	Track Orientation and Group Discussion Track 2 Student Advisory Team	Century C (Westin)
8:45 p.m.	Ice Cream Connection: Student Networking	Washington Park Place (Westin)

Track 2 – Friday, Nov. 2

7:00 a.m.	Breakfast	Washington Park Place (Westin)
7:45 a.m.	Morning Message	Century C (Westin)
8:00 a.m.	Inclusive Communication Derek Greenfield and Alec Virgil, Greenfield & Associates	Century C (Westin)
9:15 a.m.	Conveying Your Agricultural Message Moderator: Sara Wyant, Agri-Pulse Communications Terry Abbott, Wilbur-Ellis Company Jeneen Abrams, MANRRS Matt Amick, Missouri Corn Growers Association Ryan Bartlett, Compass Minerals Charles Benson, BASF Brian Celli, AGCO Sonali Dalvi, PepsiCo David Decapp, Farmers Mutual Hail Insurance Company of Iowa Ryan Emery, CGB Enterprises, Inc. Jake Espenmiller, MetLife Agricultural Finance Leighton Eusebio, Green Plains, Inc. Dustin Johansen, Osborn Barr Sarah Kolell, Rabo AgriFinance Kelly Manning, Growth Energy Stacy Mayo-Martinez, Kansas Corn Growers Association Dana Redman, Kuhn North America, Inc. Dawn Refsell, Valent U.S.A. LLC Pete Stoddart, Cargill, Inc. Tiffany Turner, Deere & Company Jeremy Unruh, Deere & Company Kerry Wefald, Kansas Department of Agriculture Allen Williams, Archer Daniel Midland Company	Century C (Westin)
10:45 a.m.	Fusing Your Personal and Professional Brand Carleane Hawkins, The Camdy Group	Century C (Westin)
12:00 p.m.	Lunch	Exhibit Hall A (Sheraton)
1:00 p.m.	Opportunity Fair	Exhibit Hall B (Sheraton)
3:00 p.m.	The Student's Guide to Professionalism Terri Thompson, Terri Thompson Presents	Century C (Westin)
4:10 p.m.	Impact of Personal Reflection Meleesa Younggren Grate, The Grate Group	Century C (Westin)
5:15 p.m.	Track meeting	Century C (Westin)
6:00 p.m.	Leader in Agriculture Award reception	Exhibit Hall B (Sheraton)
7:00 p.m.	Leader in Agriculture Award Dinner	Exhibit Hall A (Sheraton)

Track 2 – Saturday, Nov. 3

7:00 a.m.	Breakfast with AFA Alliance	Century A (Westin)
8:00 a.m.	Morning message	Century C (Westin)
8:15 a.m.	Winning Through Diverse Thoughts and Actions Maggie Jo Hansen, Tyson Foods, Inc. Mara Gordon, Land O’Lakes, Inc. Ann Schlueter, Community Hospital – Fairfax	Century C (Westin) Washington Park Place 1 (Westin) Washington Park Place 2 (Westin)
12:00 p.m.	Lunch with AFA Leader Fellowship™ overview	Century B (Westin)
1:00 p.m.	The Money Game Adam Carroll, National Financial Educators	Century C (Westin)
2:30 p.m.	Ethical Leadership Tucker Leadership Lab (all rooms)	Century C (Westin) Washington Park Place 1 (Westin) Washington Park Place 2 (Westin)
3:45 p.m.	Actions Speak Louder Than Words Jan Hargrave, Jan Hargrave and Associates	Century C (Westin)
5:15 p.m.	Track meeting	Washington Park Place (Westin)
6:00 p.m.	Dinner and entertainment	Exhibit Hall (Sheraton)

Track 2 – Sunday, Nov. 4

6:30 a.m.	Breakfast	Century C (Westin)
7:45 a.m.	Morning message	Century C (Westin)
8:00 a.m.	Engagement Rules Rhett Laubach, YourNextSpeaker	Century C (Westin)
9:15 a.m.	Track wrap-up and feedback	Century C (Westin)
9:30 a.m.	Taking Your Leadership With You Rhett Laubach, YourNextSpeaker	Century C (Westin)
10:15 a.m.	Closing Session Jonathan Sprinkles	Exhibit Hall A (Sheraton)
11:15 a.m.	Adjourn	

Track 3 Student Advisory Team



“Fostering new perspectives and ideas to steward change and impact food and agriculture.”

(L-R) Micah Mensing, Madelyn Regier, Michael Tupper and Allison Steins
Student Advisory Team members assess, plan and facilitate the Track experience for student delegates.

Track 3 delegates will have a better understanding of obstacles they may encounter, what tools and information will assist them in making critical decisions and how to transition into the global marketplace as they navigate change in their lives.

Thank you to all presenters, many of whom volunteer their services, for making this program possible for the next generation of agriculture leaders.

Track 3 Speakers



Camille Abrams
CHS Foundation



Kaitlyn Aird
Cargill, Inc.



Travis Becton
Deere & Company



Jason Berkland
Nationwide



Barry Bogseth
Metlife Agricultural Finance



Sarah Bohnenkamp



Ken Bollinger
Kuhn North America, Inc.



Jordan Bonham
Cargill, Inc.



Adam Carroll
National Financial
Educators



Justin Chesnut
Elanco Animal
Health



Anne Cleary
Wilbur-Ellis Company



Daren Coppock
Agricultural Retailers
Association



Sonali Dalvi
PepsiCo



David Darr
Dairy Farmers of
America



Kevin Duhe
Syngenta



Tracie Egger
AgReliant Genetics



Kevin Eye
WinField United,
Land O'Lakes, Inc.



Richard Fagerlin
Peak Solutions



Patrick Ferrell
Sibley Orchards



Phillip Gonsler
University of Missouri
— Kansas City



Ron Hanson
University of
Nebraska — Lincoln



Jason Headrick
University of
Nebraska — Lincoln



Kevin Heikes
In10t



Rex Holstein
Tyson Foods, Inc.



Abe Hughes
Trimble



Tiffany Hulinsky
IFYE Association of
the USA, Inc.



Steve Iversen
FCS Financial



Scott Kay
BASF



Shannon Kellner
Merck Animal Health



Sarah Koon
FranklinCovey



Bruce Kroese
Union Pacific
Railroad



Brad Leighton
CGB Enterprises, Inc.



Mark Mackey
Livestock Marketing
Association



Joel Mathiowetz
Farm Gate
Consulting, LLC



Suniti Mujumdar
Alltech



David Nothmann
Valent U.S.A., LLC



Amy O'Shea
FMC Corporation



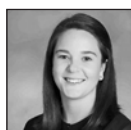
Dennis Padgett
Cobb-Vantress, Inc.



Randy Parman
Helena Agri-
Enterprises, LLC



Rodney Patterson
Farm Credit



Gena Perry
AgriCorps, Inc.



Steve Petersen
Gowan USA, LLC



Kurt Peterson
Scoular



**Michael
Rainwater**
Smithfield Foods



Steve Reno
Corteva AgriScience



Doug Roose
Archer Daniels
Midland Company



Aaron Rutledge
Farmers Mutual
Hail Insurance
Company of Iowa



Gwyn Schramm
Bayer



Ellen Thompson
National Teach Ag
Campaign



Quentin Tyler
Michigan State
University



Megan Weidner
Bunge North
America



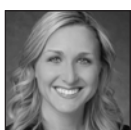
Jim Welch
The Growth Leader



Deanna Wiedner
Tyson Foods, Inc.



Bill Winkelman
National Pork
Board



Jessica Wright
American Royal
Association



De'Etra Young
Tennessee State
University



Jeff Zyskowski
Ardent Mills

Track 3 – Thursday, Nov. 1

1:00 p.m.	Registration	Lobby (Sheraton)
4:15 p.m.	New to AFA: Hit the Ground Running	Chouteau (Sheraton)
5:00 p.m.	Welcome Session AFA Student Advisory Team Captain Charlie Plumb Mark Stewart, Agriculture Future of America	Exhibit Hall A (Sheraton)
7:15 p.m.	Track orientation Track 3 Student Advisory Team	Atlanta/New York (Sheraton)
8:30 p.m.	Mocktails	Exhibit Hall A (Sheraton)

Track 3 – Friday, Nov. 2

7:00 a.m.	Breakfast	Exhibit Hall A (Sheraton)
7:45 a.m.	Morning message	Atlanta/New York (Sheraton)
8:00 a.m.	Influencers of Change Across Generations Jim Welch, The Growth Leader	Atlanta/New York (Sheraton)
9:00 a.m.	Opportunity Fair	Exhibit Hall B (Sheraton)
11:00 a.m.	Global Trends and Economies in Agriculture and Food Dennis Padgett, Cobb-Vantress, Inc. Sonali Dalvi, PepsiCo	Atlanta/New York (Sheraton)
12:00 p.m.	Lunch	Exhibit Hall A (Sheraton)
1:00 p.m.	Managing Career Decisions Kaitlyn Aird and Jordan Bonham, Cargill Inc.	Atlanta/New York (Sheraton)
2:15 p.m.	Executive Forum on Stewarding Change Moderator: Rodney Patterson, Farm Credit Camille Abrams, CHS Foundation Travis Becton, Deere & Company Jason Berkland, Nationwide Barry Bogseth, MetLife Agricultural Finance Ken Bollinger, Kuhn North America, Inc. Justin Chesnut, Elanco Animal Health Anne Cleary, Wilbur-Ellis Company Daren Coppock, Agricultural Retailers Association David Darr, Dairy Farmers of America, Inc. Kevin Duhe, Syngenta Kevin Eye, Winfield United, Land O'Lakes, Inc. Rex Holstein, Tyson Foods, Inc. Abe Hughes, Trimble Steve Iversen, FCS Financial Scott Kay, BASF Shannon Kellner, Merck Animal Health Bruce Kroese, Union Pacific Railroad	Atlanta/New York Brad Leighton, CGB Enterprises, Inc. Mark Mackey, Livestock Marketing Association Suniti Mujumdar, Alltech David Nothmann, Valent U.S.A. LLC Amy O'Shea, FMC Corporation Randy Parman, Helena Agri-Enterprises, LLC Steve Petersen, Gowan U.S.A., LLC Kurt Peterson, The Scoular Company Michael Rainwater, Smithfield Foods Steve Reno, Corteva Agriscience Doug Roose, Archer Daniels Midland Company Aaron Rutledge, Farmers Mutual Hail Insurance Company of Iowa Gwyn Schramm, Bayer Megan Weidner, Bunge North America Deanna Wiedner, Tyson Foods, Inc. Bill Winkelman, National Pork Board Jeff Zyskowski, Ardent Mills
5:15 p.m.	Track meeting	Atlanta/New York (Sheraton)
6:00 p.m.	Leader in Agriculture reception	Exhibit Hall B (Sheraton)
7:00 p.m.	Leader in Agriculture Award Dinner	Exhibit Hall A (Sheraton)

Track 3 – Saturday, Nov. 3

7:00 a.m.	Breakfast	Exhibit Hall A (Sheraton)
8:05 a.m.	Morning message	Atlanta/New York (Sheraton)
8:15 a.m.	The Money Savvy Student Adam Carroll, National Financial Educators	Atlanta/New York (Sheraton)
10:00 a.m.	Preparing for Change and the Future Quentin Tyler, Michigan State University Jessica Wright, American Royal Association Joel Mathiowetz, Farm Gate Consulting, LLC Sarah Koon, FranklinCovey	Atlanta (Sheraton) New York (Sheraton) Chicago (Sheraton) Chouteau (Sheraton)
12:00 p.m.	Lunch	Exhibit Hall A (Sheraton)
1:00 p.m.	Preparing for Change and the Future (cont.)	
3:15 p.m.	Track 3 Breakouts <i>Family Dynamics in Agribusiness</i> Ron Hanson, University of Nebraska – Lincoln <i>Navigating an Entrepreneurial Path</i> Moderator: Phillip Gonsher, University of Missouri – Kansas City Patrick Ferrell, Sibley Orchards Kevin Heikes, In10t <i>The Next Step: Post Graduate Opportunities in Agriculture</i> Moderator: Tracie Egger, AgReliant Genetics Jason Headrick, University of Nebraska – Lincoln Tiffany Hulinsky, IFYE Association of the USA, Inc. <i>Blazing an Intrapreneurial Trail</i> Sarah Bohnenkamp	Chouteau (Sheraton) Atlanta (Sheraton) New York (Sheraton) Gillham (Sheraton)
5:15 p.m.	Track meeting	
6:00 p.m.	Dinner and entertainment	Exhibit Hall (Sheraton)

Track 3 – Sunday, Nov. 4

6:30 a.m.	Breakfast	Atlanta/New York (Sheraton)
7:45 a.m.	Morning message	Atlanta/New York (Sheraton)
8:00 a.m.	Making a Positive Impact Richard Fagerlin, Peak Solutions	Atlanta/New York (Sheraton)
9:30 a.m.	Track wrap-up and feedback Mark Stewart, Agriculture Future of America	Atlanta/New York (Sheraton)
10:15 a.m.	Closing Session Jonathan Sprinkles	Exhibit Hall A (Sheraton)
11:15 a.m.	Adjourn	

Track 4



**“Establishing a network of lifelong learners
in food and agriculture.”**

Track 4 is a unique capstone experience for seniors who have been involved in multiple tracks of the AFA program. Building on the competency development from previous years, Track 4 is a highly interactive, participant-directed program. Sessions focus on making the transition from college to career and discussing individual and collective impacts to global agricultural issues. Discussion groups, participant-led facilitation and pre-conference preparation add value to the experience. Extensive executive mentoring is an integral part of Track 4.

Thank you to all presenters, many of whom volunteer their services, for making this program possible for the next generation of agricultural leaders.

Track 4 Speakers



Leta Anderson
Leadership Innovations



Margie Beck
Rabo AgriFinance



Dennis Branch
AGCO



Jennifer Dao
Hormel Foods



Amanda De Jong
USDA – Iowa Farm
Service Agency



Andrew Etheredge
Cactus Feeders



Kyle Gustafson
WinField United,
Land O'Lakes, Inc.



Diane Hartley
CGB Enterprises, Inc.



Valerie Kesterson
Superior Seeds LLC



Jill Leitzen
Kuhn North America, Inc.



Chris Long
Syngenta



Tim Novak
Merck Animal Health



Jacob Prather
Bayer



Sonny Ramaswamy
U.S. Department of
Agriculture



Orion Samuelson
WGN Radio and RFD-TV



Aubrey Sunderman
ICM, Inc.



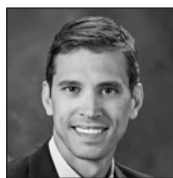
Tom Swearingen
GROWMARK, Inc.



Samantha Ternes
K-Coe Isom



Julie Tesch
Waldorf Consulting



Wesley Uhlmeier
Archer Daniels Midland
Company



Amy Utterback
Bayer



Russ Weathers
Agriculture Future of
America



**Charlotte Westerhaus-
Renfrow**
Change Pro, LLC



Jason Womack
The Womack Company



Jake Worcester
Kansas 4-H Foundation

Track 4 – Thursday, Nov. 1

1:00 p.m.	Registration	Lobby (Westin)
2:00 p.m.	Track 4 welcome and orientation Matt Brillhart, Agriculture Future of America Jake Worcester, Kansas 4-H Foundation	Liberty (Westin)
5:00 p.m.	Welcome session AFA Student Advisory Team Captain Charlie Plumb Mark Stewart, Agriculture Future of America	Exhibit Hall A (Sheraton)
7:15 p.m.	Facilitation Training Leta Anderson	Liberty (Westin)

Track 4 – Friday, Nov. 2

7:00 a.m.	Breakfast	Washington Park Place (Westin)
7:45 a.m.	Morning meeting	Liberty (Westin)
8:00 a.m.	Building the New Leader Jake Worcester, Kansas 4-H Foundation	Liberty (Westin)
9:00 a.m.	Opportunity Fair	Exhibit Hall B
11:15 a.m.	Lunch preparation Traci Via, Agriculture Future of America	Chouteau (Sheraton)
11:45 a.m.	AFA Board of Directors' Luncheon	Empire (Sheraton)
1:30 p.m.	Transition to Work Margie Beck, Rabo AgriFinance Dennis Branch, AGCO Jennifer Dao, Hormel Foods Andrew Etheredge, Cactus Feeders Kyle Gustafson, WinField United, Land O'Lakes, Inc. Diane Hartley, CGB Enterprises, Inc. Jill Leitzen, Kuhn North America, Inc. Chris Long, Syngenta Tim Novak, Merck Animal Health Aubrey Sunderman, ICM, Inc. Tom Swearingen, GROWMARK, Inc. Samantha Ternes, K-Coe Isom Wesley Uhlmeier, Archer Daniels Midland Company Amy Utterback, Bayer	Liberty (Westin)
3:00 p.m.	Open Mic: Better Together Moderator: Orion Samuelson, WGN Radio and RFD-TV Amanda DeJong, USDA – Iowa Farm Service Agency Sonny Ramaswamy, USDA	Liberty (Westin)
4:15 p.m.	Productivity Secrets: Manage Time, Get the Right Things Done Jason Womack, The Womack Company	Liberty (Westin)
5:15 p.m.	Track meeting	Liberty (Westin)
6:00 p.m.	Leader in Agriculture reception	Exhibit Hall B (Sheraton)
7:00 p.m.	Leader in Agriculture Award Dinner	Exhibit Hall A (Sheraton)

Track 4 – Saturday, Nov. 3

7:00 a.m.	Breakfast	Century B (Westin)
8:00 a.m.	Morning meeting	Liberty (Westin)
8:15 a.m.	Servant Leadership Julie Tesch, Waldorf Consulting	Liberty (Westin)
11:00 a.m.	Fireside Chat with Russ Weathers Russ Weathers, Agriculture Future of America	Liberty (Westin)
12:00 p.m.	Lunch	Liberty (Westin)
1:00 p.m.	Respect and Inclusion: A Young Professional's Tools for Success Charlotte Westerhaus-Renfrow, ChangePro, LLC	Liberty (Westin)
4:15 p.m.	It's All in the Experience – with Track 1	San Francisco/Chicago (Sheraton)
6:30 p.m.	Dinner and networking with AFA Alliance	Rockhill Grille (off site)

Track 4 – Sunday, Nov. 4

6:30 a.m.	Breakfast	Liberty (Westin)
7:45 a.m.	Morning message	Liberty (Westin)
8:00 a.m.	Pursuing Lifelong Leadership Jacob Prather, Bayer Valerie Kesterson, Superior Seeds, LLC	Liberty (Westin)
9:00 a.m.	Track 4 wrap-up and feedback Matt Brillhart, Agriculture Future of America Jake Worcester, Kansas 4-H Foundation	Liberty (Westin)
10:15 a.m.	Closing session Jonathan Sprinkles	Exhibit Hall A (Sheraton)
11:15 a.m.	Adjourn	

AFA Board of Directors



Camille Abrams
Vice President,
Energy & PFI Finance
CHS, Inc.



Jay Akridge
Provost and Executive Vice
President for Academic
Affairs and Diversity
Purdue University



Travis Becton
Director of Sales,
U.S. & Canada
Deere & Company



Daren Coppock
President and CEO
Agricultural Retailers
Association



Kevin Eye
Vice President Agronomy
and Product Development
WinField United
Land O'Lakes, Inc.



Rolando Flores
Dean College of
Agricultural, Consumer and
Environmental Sciences
New Mexico State University



Pete Goetzmann
Vice President
Archer Daniels Midland
Company



Scott Kay
Vice President,
U.S. Crop
BASF



Ruth Kimmelshue
Corporate Senior VP,
Business Operations &
Supply Chain
Cargill, Inc.



David Nothmann
Vice President, Marketing
Valent U.S.A. LLC



Rodney Patterson
Farm Credit



Steve Reno
President, Seed Business
Platform
Corteva Agriscience



Gwyn Schramm
Vice President and Head of
Global Market Development
Center of Excellence
Bayer CropScience



Mark Stewart
President and CEO
Agriculture Future of
America



Kip Tom
Managing Member
Tom Farms, LLC



Megan Weidner
Vice President, Corporate
Responsibility and
Sustainability
Bunge North America

Lifetime Directors



Sandy Kemper
Chairman and Founder
C2FO



Mariner Kemper
Chairman and CEO
UMB Financial Corporation



L. Joshua Sosland
Vice President
Sosland Publishing



K. Russell Weathers
Chairman
Agriculture Future of
America

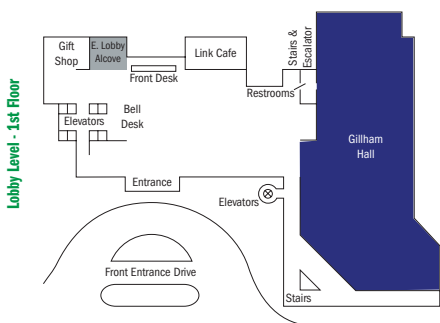
2345 McGee Street
Kansas City, MO 64108

**Main Sessions, Meals
& AFA Opportunity Fair**

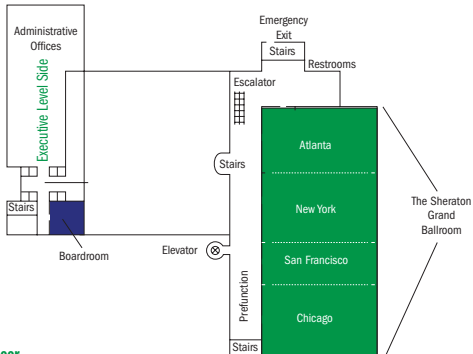
Track Rooms

Breakouts & Partner Breakfasts

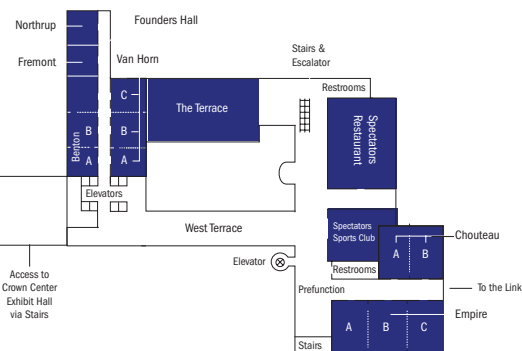
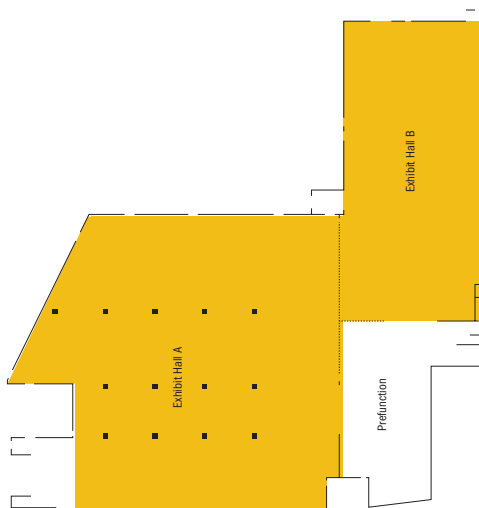
AFA Conference Office



Ballroom / Executive Level - 3rd Floor



Mezzanine Level - 2nd Floor



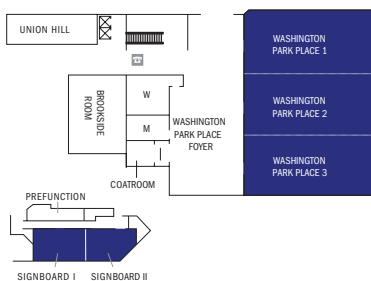
1 E Pershing Road
Kansas City, MO 64108

Meals

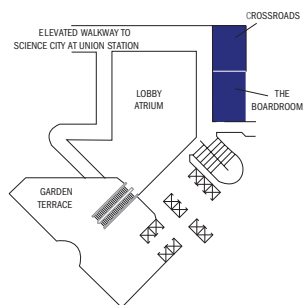
 Track Rooms

Breakouts & Partner Breakfasts

 AFA Alliance



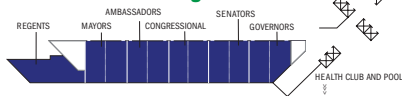
Executive Office Level



Ballroom Level



Fifth-Floor Meeting Rooms





Agriculture Future of America

www.agfuture.org

[@AgFutureAmerica](https://twitter.com/AgFutureAmerica)

[#AFALC18](https://twitter.com/AgFutureAmerica)