



AFA exists to be a catalyst in the preparation
of a new generation of agriculture leaders.

BE: The Voice. The Catalyst. The Future.



What do you want to **BE**?

It's probably one of the first questions we answer. It's also a question we will continually ask ourselves. Whom are we striving to be? What's our purpose? What legacy will we leave?

As agriculturists, these questions go beyond our personal aspirations. Agriculture is at a crossroads, like so many times before. Decisions need to be made about what comes next. How are we going to build upon the past? How will we innovate for the future? We are at a point in time where many decision makers are removed from agriculture. Agriculture's story needs to be told. We know that. It's time to stop talking about how. We need to step up and share our stories. It's time to **BE The Voice**.

Demands for more, higher quality agricultural and food products are increasing throughout the world. Our customers want these products delivered sustainably, transparently, safely and quickly. Agriculture needs innovators to find solutions to these challenges. Nothing progresses by remaining the same. Where do we need to explore change in our industry and communities? What are we waiting for? We have the opportunity to **BE The Catalyst**.

There's a generational gap in agriculture's workforce. We will have to hit the ground running and accelerate in our careers more quickly than ever before. Knowing our purpose and place in agriculture drives us to dedicate our careers and ourselves to making a difference. We must **BE The Future**.

Each AFA Leaders Conference delegate is selected because of their potential and successes. We've demonstrated we are passionate and committed to agriculture. AFA Leaders Conference is where we dig in and start moving forward – as individuals and as a generation of leaders. Together, we commit to **BE** the voice, the catalyst and the future for agriculture.

Welcome to AFA Leaders Conference



Welcome to the 2015 AFA Leaders Conference. On behalf of AFA's Board of Directors, student leaders and staff, thank you for your participation and support of AFA leader development experiences. This year's Conference theme challenges our student delegates to consider who and what they want to **BE** as they launch their careers.

The current generation of students and young professionals is passionate about sharing agriculture's message and they are equipped in a variety of ways, spanning technologies and the globe. Over 600 AFA student delegates have been specifically selected for this Conference experience based on their talent, passion and commitment to the agriculture industry. They are the future leaders of agriculture and they will lead with innovation and with integrity.

As a delegate sponsor, scholarship provider, speaker, programmatic or collegiate partner or AFA Opportunity Fair exhibitor, we thank you for partnering with us in our vision to be a catalyst in the preparation of the next generation of agriculture leaders. I invite you to enjoy your Conference experience. If you have any questions or concerns, please do not hesitate to reach out to me or any members of the AFA staff. We are glad you are here!

K. Russell Weathers

CEO

AFA Staff

K. Russell Weathers

CEO

Denise O'Dell

Event Manager

Mayela Esser

Systems Administrator

Mark Stewart

President

Johnna Wallingford

Program Coordinator

Suzanne Smith

Administrative Assistant

Nancy Barcus

Chief Operating Officer

Megan Karlin

Marketing & Communications
Manager

Joanne Kao

Systems Assistant

Annie Storey

Director of Programs

Kate Ladd

Development Manager

Volunteers

AFA sincerely appreciates
the volunteers who make AFA
Leaders Conference possible.

Jessica Wright

Collegiate and Student
Relations Manager

Terry Ferguson

Administrative Coordinator

AFA Student Leaders



Industry Schedule

This schedule lists all activities open to industry participation. Certain activities are reserved as partner benefits. **All activities require prior registration.** If you have any questions, please contact Kate Ladd, 913-244-1146.

Thursday, November 5

1:30 p.m.	Check-in Begins	Lobby
7:00 p.m.	Mocktails Check-in	Lobby
9:00 p.m.	Mocktails (Leader Partner Benefit—\$25,000+)	Terrace

Friday, November 6

6:30 a.m.	Opportunity Fair Setup and Check in	Exhibit Hall A
7:15 a.m.	Agribusiness Council of Kansas City Breakfast (Pre-Registration Required)	Empire Room
9:00 a.m.	Opportunity Fair	Exhibit Hall A
11:45 a.m.	AFA Board of Directors Lunch (Invitation Only)	Empire Room
12:00 p.m.	Opportunity Fair Lunch (Ticketed Event)	Exhibit Hall B
6:00 p.m.	Leader in Agriculture Award Reception	Exhibit Hall A
7:00 p.m.	Leader in Agriculture Award Dinner (Pre-Registration Required)	Exhibit Hall B

Saturday, November 7

7:00 a.m.	Partner Breakfasts (Leader Partner Benefit—\$25,000+)	Various Rooms
-----------	---	---------------

Collegiate Schedule

This schedule lists all activities open to university and college liaisons. **Some activities require prior registration.** If you have any questions, please contact Annie Storey, 402-214-3622.

Thursday, November 5

1:30 p.m.	Check-in Begins	Gillham Hall
7:30 p.m.	Collegiate Welcome Reception	VanHorn

Friday, November 6

6:00 p.m.	Leader in Agriculture Award Reception	Exhibit Hall A
7:00 p.m.	Leader in Agriculture Award Dinner (Pre-Registration Required)	Exhibit Hall B

Saturday, November 7

8:30 a.m.	University Liaison Breakfast	Spectators
9:30 a.m.	University Liaison Meeting	Empire A
1:30 p.m.	University Liaison Idea Swap	Empire A

2015 AFA Student Leaders pictured to the left (left to right) **Back row:** Christine Curtis, *California Polytechnic State University*; Amanda Rhodes, *SUNY Cobleskill*; Kate Likens, *University of Nebraska–Lincoln*; Savannah Vickery, *Clemson University*; Morgan Beach, *University of Missouri*; Elizabeth Galbreath, *Virginia Tech*; Meghan Bennett, *The Ohio State University*; Casey Major, *Utah State University*; Maggie Bryant, *North Carolina State University*; Keili Summey, *Oklahoma State University*. **Middle row:** Pierce Bennett, *Kansas State University*; Jordan Bonham, *The Ohio State University*; Celina Young, *Iowa State University*; Shelby Cooper, *University of Illinois*; Layton Hrubes, *Montana State University*; Mason Moore, *New Mexico State University*; Colleen Smith, *Cornell University*; Macie Wippel, *Purdue University*; Stephanie George, *Washington State University*; Ben Conner, *University of Kentucky*. **Front row:** Jacob Dailey, *North Dakota State University*; Michael Long, *University of Wisconsin — Platteville*; D.J. Van Klompenburg, *South Dakota State University*; Raeann Magill, *Colorado State University*; Zane Gouker, *University of Arizona*; Chandler Mulvaney, *Auburn University*; Brandon Barnett, *University of Florida*; Vinz Karl, *University of Minnesota*.

AFA Organizational Partners

AFA extends its appreciation to the following individuals, businesses, corporations, institutions and associations, who contribute to the success of the overall AFA organization, as crucial partners in the preparation of new leaders in the industry. Their support is vital to the ongoing success of this Conference and the many other programs and services provided by AFA.

Investments \$100,000 to \$249,999



Enid and Crosby Kemper Foundation

William T. Kemper Charitable Trust

Investments \$50,000 to \$99,999

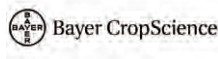


Arvin Gottlieb Charitable Foundation

R. C. Kemper Charitable Trust

Kearney Wornall Charitable Trust

Investments \$25,000 to \$49,999



AFA Leaders Conference Partners

AFA thanks the following entities who have contributed to the success of the 2015 AFA Leaders Conference by providing resources to carry out this program. A full list of AFA partners can be found at www.agfuture.org/IndustryPartners.

Investments \$10,000 to \$24,999

American Royal Association
Belles of the American Royal
BNSF Railway
California Cotton Alliance
Central Missouri Agriculture Club, Inc.
Cerner Corporation
Dairy Farmers of America, Inc.
Gowan USA, LLC
LEWMAR Foundation
National Crop Insurance Services
National FFA Organization

National Pork Board
Nationwide Insurance
Nebraska Corn Board
Bob and Georgia Richter
Roderick J. and Jo Anne Cyr Foundation
Seaboard Foods
The Stanley H. Durwood Foundation
Stone Family Foundation
St. Joseph Area Chamber of Commerce
The Sosland Foundation

Investments \$5,000 to \$9,999

AgReliant Genetics
Agri Beef Co
Austin Hardware & Supply, Inc.
Ceva Animal Health
Farm Credit Mid-America
Harry and Clara Cleberg
FLM+

FCS Financial
Kansas Department of Agriculture
Mennel Milling Company
Missouri Soybean Merchandising Council
New Balance Commodities
Parnell
Verdesian Life Sciences

Investments \$1,000 to \$4,999

AgriBank, FCB
AgriCorps, Inc.
Agricultural Retailers Association
American AgCredit
Aon Risk Solutions
Ash Grove Charitable Foundation
Beck's Hybrids
Caterpillar Inc.
Central Valley Ag
Farmers Mutual Hail Insurance Company
J.R. Simplot Company

Kansas Corn Growers Association
MANRRS
MFA Foundation
Michelle Hays Scholarship Fund
Midwest Dairy Association
Missouri Department of Agriculture
Missouri Pork Association
Rob-See-Co
Smithfield Hog Production Division
Betty and Tom Scott

University Partners

Auburn University
Butler Community College Foundation
Cornell University
Fort Hays State University
Illinois State University
Iowa State University
Kansas State University
Michigan State University
Missouri State University
New Mexico State University
North Dakota State University
Northeast Community College
Northwest Missouri State University
Oklahoma State University
Purdue University
South Dakota State University

Southeast Missouri State University
The Ohio State University
The Pennsylvania State University
University of Arizona
University of Arkansas
University of California - Davis
University of Florida
University of Georgia
University of Idaho
University of Illinois
University of Kentucky
University of Minnesota
University of Missouri
University of Wisconsin-River Falls
Virginia Tech
Washington State University

In-Kind These partners provided in-kind support for the 2015 AFA Leaders Conference.

Bill's Tropical Greenhouse
Cerner Corporation

Ricoh USA, Inc.
Sheraton Kansas City Hotel at Crown Center

Agriculture Future of America

AFA creates partnerships that identify, encourage and support outstanding young men and women pursuing careers in agriculture. AFA is nationally recognized for its excellence in leader training and career development for college students and young professionals in the agriculture and food industry.

AFA Leaders Conference



AFA Leaders Conference is a key component of AFA's leader and career development training program. This forum provides students an opportunity to develop key competencies to enhance their marketable skills. Agricultural businesses, organizations, associations, institutions and individuals invest in this program as a means to develop human capital for our industry.

At AFA Leaders Conference, students participate in one of four program tracks with the following emphases:

Track 1 — Personal assessment and career preparation

Track 2 — Communication and relationship-building skills

Track 3 — Managing change and preparing to live and work in a global marketplace

Track 4 — Lifelong learning and industry awareness

Learn more about each specific track in the next pages. All AFA delegates, industry professionals and volunteers are invited to share their thoughts about the 2015 AFA Leaders Conference on Twitter via [@AgFutureAmerica](#) and [#AFALC15](#).

Keynote Speakers



Jolene Brown



Dr. Lowell Catlett



Russ Weathers
Agriculture Future of America

AFA Opportunity Fair



Agriculture Future of America links college students to opportunities for career development in business, production, education, science and technology.

The AFA Opportunity Fair is designed to give participating organizations a competitive edge in the identification of human capital. AFA, a year-round resource, links students and employers based on individual interests.

During the AFA Opportunity Fair, students learn about available internships and full-time employment opportunities, as well as graduate school and international study programs. Recruiters are eager to share their definitions of agriculture and explore opportunities to help students create stronger personal and professional portfolios through internships or full-time employment.

2015 AFA Opportunity Fair Participants

AgCareers.com	CropLife America	Mennel Milling Company
AGP Inc.	Dairy Farmers of America	Merck Animal Health
AgReliant Genetics	Dow AgroSciences	Missouri Department of Agriculture
Agri Beef Co.	DuPont Pioneer	Monsanto Company
AgriCorps, Inc.	Elanco Animal Health	National Association of State Departments of Agriculture
Agricultural Retailers Association	Farm Credit	National Association of Ag Educators
Agriculture Future of America	Farm Safety For Just Kids	National Crop Insurance Services
AgriGold Hybrids	Farmers Mutual Hail Insurance Company	National FFA Organization
American Phytopathological Society	FarmLink, LLC	National Pork Board
American Royal Association	FLM+	Nationwide Insurance
The Andersons, Inc.	GOWAN USA, LLC	New Balance Commodities
Aon Risk Solutions	Great Plains Manufacturing	Osborn+Barr
Archer Daniels Midland Company	GROWMARK, Inc.	Parnell
Ardent Mills	Helena Chemical Company	Rob-See-Co
Austin Hardware & Supply, Inc.	Hog Slat, Inc.	Seaboard Foods
Bader Rutter & Associates	Hormel Foods	The Scoular Company
Bartlett and Company	IFYE Association of the USA, Inc.	Smithfield Hog Production Division
Bayer CropScience	INTL FCStone Inc.	Syngenta
Beck's Hybrids	J.R. Simplot Company	Triumph Foods
BNSF Railway	JBS USA	Tuskegee University
Boehringer Ingelheim Vetmedica, Inc.	John Deere	Union Pacific Railroad
Bunge North America	Kansas State University Master of Agribusiness	University of Nebraska Doctor of Plant Health
Cargill, Inc.	Kuhn North America, Inc.	Valent U.S.A. Corporation
Caterpillar Inc.	Land O'Lakes, Inc.	Verdesian Life Sciences
Ceva Animal Health	Lansing Trade Group, LLC	West Central
CGB Enterprises, Inc.	MANRRS	
CHS Inc.		
Crop Production Services		

Track 1 Student Advisory Team



(L-R) Jordan Bonham, D.J. Van Klompenburg, Shelby Cooper

The pillar of the Track 1 program is self assessment. Understanding your talents, skills, values and motivations is important in finding the right career path, activating personal growth and defining your contribution to the agricultural community. Self awareness leads to a higher level of cognition and ability to work with those around you in order to reach your potential.

Thank you to all presenters, many of whom volunteer their services, for making this program possible for the next generation of agriculture leaders.

Share your thoughts about AFA Leaders Conference and Track 1 via Twitter using [@AgFutureAmerica](#) and [#AFALC15](#).

Not pictured:

Charlene Patten, The Andersons, Inc.

Julie Wittenbrink, Bunge North America

Jordan Wright, Ardent Mills

Track 1 Speakers



Carol Anderson
EXPONENT



Mallory Angotti
Ceva



Steve Anthofer
Land O'Lakes, Inc.



Jennifer Ball
Union Pacific
Railroad



Shealyn Becker
Farm Credit
Services of America



Stacia Berry
Wyoming Department
of Agriculture



Chad Bontrager
Kansas Department
of Agriculture



Tom Bradford
Crop Production
Services, Inc.



Kellie Bray
CropLife America



Danielle Cooney
University of Illinois



Morgan Core
Hormel Foods
Corporation



Kylee Deniz
National Pork
Board



Edie Doane
Kansas Farm
Bureau



Ted Elverson
POET



Brandon Everett
GROWMARK, Inc.



Amy Gazaway
Oklahoma State
University



Mara Gordon
Land O'Lakes, Inc.



Kelly Goss
Merck Animal
Health



Laura Handke
Missouri Ag Education
on the Move



Jared Henderson
CropLife America



L.G. Jett



Erin Jones
Monsanto Company



Marty Keaveny
Boehringer Ingelheim
Vetmedica, Inc.



Kraig Knapp
Kuhn North
America, Inc.



Bonnie Knittel
Syngenta



Shawn Koehler
Bayer CropScience



Debbie Ladehoff
Farmers Mutual
Hail Insurance Co.



Mignon Lambley
BNSF Railway



Kristie Larson
American Royal
Association



Sydney Lawrence
Smithfield Hog
Production Division



Jill Leitzen
Kuhn North
America



Damian Leone
CGB Enterprises, Inc.



Josh Ligon
Cargill, Inc.



Morgan Ludvigson
CHS Inc.



Joel Mathiowetz
Farm Gate
Consulting, LLC



Rebecca McConville
Rebecca McConville
Consulting



Rob Ogle
FranklinCovey



Marcie Oppold
Archer Daniels
Midland Company



Michelle Pace
INTL FCStone Inc.



Trey Parrott
The Scoular
Company



Heidi Perman
University of Denver
Career Center



Lauren Prettyman
South Carolina
Farm Bureau



Drew Ratterman
Dow AgroSciences



Justin Rismiller
Cargill, Inc.



Eric Schilling
Elanco Animal
Health



Marlo Schulz



Rick Sibbel
Merck Animal
Health



Alaina Sill
Seaboard Foods



Krista Soda
Nationwide
Insurance



Michelle Sommer
Archer Daniels
Midland Company



Wendy Smic
DuPont Pioneer



Allison Stephey
GROWMARK, Inc.



Jennifer Struck
DuPont Pioneer



Kerry Sullivan
The Scoular
Company



Terri Thompson
Terri Thompson
Presents



Susie Thompson



Erika Vikor
Parnell



B.J. Warren
Monsanto Company



Jenny Wilcox
John Deere



Steve Yates
Monroe City R-1
Schools



Harvey Young



Esteban Ziegler
Boehringer Ingelheim
Vetmedica, Inc.

Track 1 – Thursday, November 5

1:30 p.m.	Registration	Gillham Hall
4:00 p.m.	Welcome Session AFA Student Advisory Team Russ Weathers, Agriculture Future of America Dr. Lowell Catlett	Exhibit Hall B
6:00 p.m.	Dinner	Exhibit Hall A
7:15 p.m.	Track Orientation and Group Discussion	Chicago
9:00 p.m.	Ice Cream Connection: Student Networking	Exhibit Hall A

Track 1 – Friday, November 6

7:00 a.m.	Breakfast	Exhibit Hall B
7:45 a.m.	Morning Message	Chicago
8:00 a.m.	Resume, Career Fair & Interview Skills Facilitator: Heidi Perman, University of Denver Career Center Mallory Angotti, Ceva Jennifer Ball, Union Pacific Railroad Shealyn Becker, Farm Credit Services of America Mara Gordon, Land O'Lakes, Inc. Kelly Goss, Merck Animal Health Jared Henderson, CropLife America Bonnie Knittel, Syngenta Debbie Ladehoff, Farmers Mutual Hail Insurance Co. Sydney Lawrence, Smithfield Hog Production Jill Leitzen, Kuhn North America Josh Ligon, Cargill, Inc. Morgan Ludvigson, CHS Inc. Marcie Oppold, Archer Daniels Midland Company Michelle Pace, INTL FCStone Inc.	Chicago Charlene Patten, The Andersons, Inc. Lauren Prettyman, South Carolina Farm Bureau Drew Ratterman, Dow Agrosiences Alaina Sill, Seaboard Foods Krista Soda, Nationwide Insurance Allison Stephey, GROWMARK, Inc. Jennifer Struck, DuPont Pioneer Erika Vikor, Parnell B.J. Warren, Monsanto Company Jenny Wilcox, John Deere Julie Wittenbrink, Bunge North America Jordan Wright, Ardent Mills Esteban Blanco Ziegler, Boehringer Ingelheim Vetmedica, Inc.
10:30 a.m.	Networking Break	
10:45 a.m.	Opportunity Fair	Exhibit Hall A
12:00 p.m.	Professional Etiquette in Dining L.G. Jett, Ph.D.	Chicago
1:30 p.m.	Networking Break	
1:45 p.m.	Finding the Right Cultural Fit Kerry Sullivan, The Scoular Company	New York
2:45 p.m.	Networking Break	
3:00 p.m.	Discovering Career Paths in Agriculture Moderators: Kristie Larson, American Royal Association Kellie Bray, CropLife America Carol Anderson, EXPONENT Steve Anthofer, Land O'Lakes, Inc. Stacia Berry, Wyoming Department of Agriculture Chad Bontrager, Kansas Department of Agriculture Tom Bradford, Crop Production Services, Inc. Morgan Core, Hormel Foods Corporation Kylee Deniz, National Pork Board Brandon Everett, GROWMARK, Inc. Laura Handke, Missouri Ag Education on the Move Erin Jones, Monsanto Company Marty Keaveny, Boehringer Ingelheim Vetmedica, Inc. Kraig Knapp, Kuhn North America	Chicago Shawn Koehler, Bayer CropScience Mignon Lambley, BNSF Railway Damian Leone, CGB Enterprises, Inc. Rebecca McConville, Rebecca McConville Consulting Scott Mills, Lansing Trade Group, LLC Trey Parrott, The Scoular Company Justin Rismiller, Cargill, Inc. Eric Schilling, Elanco Animal Health Dr. Rick Sibbel, Merck Animal Health Michelle Sommer, Archer Daniels Midland Company Wendy Srnica, DuPont Pioneer Steve Yates, Monroe City R-1 Schools
5:00 p.m.	Track Meeting	Chicago
5:15 p.m.	Networking Break	
6:00 p.m.	Leader in Agriculture Award Reception	Exhibit Hall A
7:00 p.m.	Leader in Agriculture Award Dinner	Exhibit Hall B

Track 1 — Saturday, November 7

7:00 a.m.	Breakfast	Exhibit Hall B
7:45 a.m.	Morning Message	Chicago
8:00 a.m.	The Creative Approach for Life & Leadership Edie Doane, Kansas Farm Bureau	Chicago
9:00 a.m.	Networking Break	
9:10 a.m.	Dressing for Success Terri Thompson, Terri Thompson Presents	Exhibit Hall B
10:20 a.m.	Are You OK with Average? Russ Weathers, Agriculture Future of America	Exhibit Hall B
10:45 a.m.	Networking Break	
11:00 a.m.	5 Choices of Extraordinary Productivity Joel Mathiowetz, Farm Gate Consulting, LLC Rob Ogle, FranklinCovey Harvey Young, FranklinCovey	Gillham Hall Empire BC VanHorn ABC
12:30 p.m.	Lunch	Exhibit Hall B
1:30 p.m.	5 Choices (Cont.)	
3:00 p.m.	Networking Break	
3:30 p.m.	5 Choices (Cont.)	
5:00 p.m.	Track Meeting	Gillham Hall Empire BC VanHorn ABC
5:45 p.m.	Track 1 Departs Hotel	Lobby
6:10 p.m.	Dinner, Service Project & Entertainment	Arrowhead Stadium

Track 1 — Sunday, November 8

6:30 a.m.	Continental Breakfast	Exhibit Hall B
7:00 a.m.	Fellowship (Optional) Marlo Schulz	Van Horn
8:00 a.m.	Morning Message	Chicago
8:30 a.m.	Unleashing the Most Positive You Susie Thompson	Chicago
9:45 a.m.	Networking Break	
10:00 a.m.	It's All in the Experience Moderator: Nancy Barcus, Agriculture Future of America Mallory Angotti, CEVA Danielle Cooney, University of Illinois Ted Elverson, POET Amy Gazaway, Oklahoma State Career Services	Chicago
11:15 a.m.	Discussion and Evaluation Nancy Barcus, Agriculture Future of America	Chicago
12:00 p.m.	Lunch & Closing Session <i>Let Go of the Rope</i> Jolene Brown	Exhibit Hall B
1:30 p.m.	Adjourn	

Track 2 Student Advisory Team



“Preparing emerging leaders in agriculture to be effective communicators.”

(L-R) Mason Moore, Ben Conner, Meghan Bennett

Your ability to communicate effectively is crucial to success in both personal and professional relationships. Whether written, verbal, nonverbal or online, these skills are determining factors in accomplishing your goals. Track 2 will help further develop and enhance your communication skills through connections made with your peers, panelists and speakers.

Thank you to all presenters, many of whom volunteer their services, for making this program possible for the next generation of agriculture leaders.

Track 2 Speakers



Leta Anderson
Leadership Innovations



Mark Avilla
MDA Ag
Communications



Michael Baird
Beck's Hybrids



Brad Blaha
South Dakota State
University



Krista Bock
Monsanto Company



Adam Carroll
National Financial
Educators



Michael Carlson
South Dakota State
University



James Cathcart
FranklinCovey



Corey Ciocchetti
University of Denver



Jason Croat
CTE Global, Inc.



Vance Crowe
Monsanto Company



Casey Drodgy
Cargill, Inc.



Stephanie Gable
Vance Publishing



Jan Hargrave
Jan Hargrave &
Associates



Nicole Jorgensen
Monsanto Company



Rhett Laubach
YourNextSpeaker



Emma Likens
Cargill, Inc.



Kate Maertens
Cargill AgHorizons



Julie Maschhoff
The Maschhoffs



Eric Melin
Callahan Creek



Jessica Milstein
Archer Daniels
Midland Company



Chad Nuelle
LG Seeds



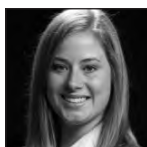
Dennis Ogle
John Deere



Kayla Petree
Syngenta



Lauren Prettyman
South Carolina Farm
Bureau



Rachel Robinson
Woodruff Sweitzer



Celia Salmon
McCormick Company



Marlo Schulz



Haydn Shaw
FranklinCovey



Nevil Speer
AgriClear



Ashlee Sorenson
McCormick Company



James Spellos
Meeting U



Mark Stewart
Agriculture Future of
America



Zane Unrau
AGCO Corporation



Lydia Wagy
Regional Missouri
Bank



Caroline Weihl
Syngenta



Loyd Wilson
Missouri Department
of Agriculture

Track 2 – Thursday, November 5

1:30 p.m.	Registration	Lobby
4:00 p.m.	Welcome Session AFA Student Advisory Team Russ Weathers, Agriculture Future of America Dr. Lowell Catlett	Exhibit Hall B
6:00 p.m.	Dinner	Exhibit Hall A
7:15 p.m.	Track Orientation and Group Discussion Track 2 Student Advisory Team	New York
9:00 p.m.	Ice Cream Connection: Student Networking	Exhibit Hall A

Track 2 – Friday, November 6

7:00 a.m.	Breakfast	Exhibit Hall B
7:45 a.m.	Morning Message	New York
8:00 a.m.	Melding Your Personal and Professional Brand Eric Melin, Callahan Creek	New York
9:00 a.m.	Networking Break	
9:15 a.m.	Conversations with Impact: Using your Values to Connect Moderator: Dr. Nevil Speer, AgriClear Vance Crowe, Monsanto Company Julie Maschhoff, The Maschhoffs Lloyd Wilson, Missouri Department of Agriculture	New York
10:45 a.m.	Networking Break	
11:00 a.m.	60 Apps in 60 Minutes James Spellos, Meeting U	New York
12:00 p.m.	Lunch	Exhibit Hall B
1:00 p.m.	Opportunity Fair	Exhibit Hall A
3:00 p.m.	Watz Write 4 Biz Comm? Stephanie Gable, Vance Publishing	New York
4:10 p.m.	Active Feedback Leta Anderson, Leadership Innovations	New York
5:15 p.m.	Track Meeting	New York
5:30 p.m.	Networking Break	
6:00 p.m.	Leader in Agriculture Award Reception	Exhibit Hall A
7:00 p.m.	Leader in Agriculture Award Dinner	Exhibit Hall B

Track 2 – Saturday, November 7

7:00 a.m.	Breakfast	Exhibit Hall B
7:45 a.m.	Morning Message	New York
8:00 a.m.	Authenticity Rules: How to be a Real (and Real Good) Presenter Rhett Laubach, YourNextSpeaker	New York
9:45 a.m.	Networking Break	
10:00 a.m.	Leadership: Great Leaders. Great Teams. Great Results. Haydn Shaw, FranklinCovey James Cathcart, FranklinCovey	Chicago San Francisco
12:00 p.m.	Lunch	Exhibit Hall B
1:00 p.m.	Leadership (Cont.)	
2:45 p.m.	Networking Break	
3:00 p.m.	Money Talks Adam Carroll, National Financial Educators	Chicago
4:20 p.m.	Networking Break	
4:30 p.m.	Values Based Leadership Corey Ciocchetti, University of Denver	Chicago
5:30 p.m.	Track Meeting	Chicago
6:15 p.m.	Depart hotel	
6:35 p.m.	Dinner, Service & Entertainment	Arrowhead Stadium

Track 2 – Sunday, November 8

6:30 a.m.	Continental Breakfast	Exhibit Hall B
7:00 a.m.	Fellowship Marlo Schulz	Van Horn
7:45 a.m.	Morning Message	New York
8:00 a.m.	Actions Speak Louder than Words Jan Hargrave, Jan Hargrave & Associates	New York
9:45 a.m.	Networking Break	
10:00 a.m.	Stand Up! Step Out! Lead! – Taking Your Leadership With You Moderator: Jolene Brown Mark Avilla, MDA Ag Communications Michael Baird, Beck's Hybrids Brad Blaha, South Dakota State University Krista Bock, Monsanto Company Michael Carlson, South Dakota State University Jason Croat, CTE Global, Inc. Casey Drodody, Cargill, Inc. Nicole Jorgensen, Monsanto Company Emma Likens, Cargill, Inc. Kate Maertens, Cargill, Inc. Jessica Milstein, Archer Daniels Midland Company Chad Nuelle, LG Seeds Dennis Ogle, John Deere Kayla Petree, Syngenta Lauren Prettyman, South Carolina Farm Bureau Rachel Robinson, Woodruff Sweitzer Celia Salmon, McCormick Company Ashlee Sorenson, McCormick Company Zane Unrau, AGCO Corporation Lydia Wagy, Regional Missouri Bank Caroline Wehl, Syngenta	New York
11:30 a.m.	AFA Discussion – Question and Answer Mark Stewart, Agriculture Future of America	New York
12:00 p.m.	Lunch & Closing Session <i>Let Go of the Rope</i> Jolene Brown	Exhibit Hall B
1:30 p.m.	Adjourn	

Track 3 Student Advisory Team



(L-R) Stephanie George, Chandler Mulvaney, Morgan Beach

As individuals, we are called upon to be catalysts and effectively manage personal and professional changes within our lives. In Track 3, delegates gain a better understanding of obstacles they may encounter, as well as, tools and information to assist in making critical decisions, and how to transition into the global marketplace as they navigate change in their lives.

Thank you to all presenters, many of whom volunteer their services, for making this program possible for the next generation of agriculture leaders.

Track 3 Speakers



Brian Barker
Dow AgroSciences



Todd Bastean
Bunge North America



Beth Bechdol
Ice Miller, LLP



Heather Benson
Cargill, Inc.



Mark Berry
CGB Enterprises, Inc.



Del Birkhofer
Boehringer Ingelheim Vetmedica, Inc.



Grady Bishop
Elanco Animal Health



Sarah Bohnenkamp



Scott Bormann
Merck Animal Health



Adam Carroll
National Financial Educators



Doug Childers
Archer Daniels Midland Company



Daren Coppock
Agricultural Retailers Association



Brian Cox
FranklinCovey



Shotika Cox
Dow AgroSciences



Jason Croat
South Dakota State University



Inci Dannenberg
Bayer CropScience



Tracie Egger
Purdue University



Chet Esther
GROWMARK, Inc.



Richard Fagerlin
Peak Solutions



Jamie Flood
John Deere



Richard Fordyce
Missouri Department of Agriculture



Dave Gebhardt
FarmLink, LLC



Chelsea Good
Livestock Marketing Association



Mara Gordon
Land O'Lakes, Inc.



Jamey Graefing
CHS Inc.



Kyle Gustafson
Land O'Lakes, Inc.



Chuck Hammond
Nationwide Insurance



Ron Hanson
University of Nebraska



Vern Hawkins
Syngenta



Jason Hess
Union Pacific Railroad



Robert Joseph
Parnell



Sandy Kemper
C2FO



Ruth Kimmelshue
Cargill, Inc.



Paul Kirbach
Monsanto Company



Lance LeMay
OPENAIR Equity Partners



Doug Miyamoto
Wyoming Department of Ag



Clem Neely
SEK Genetics



Mark O'Donnell
Lansing Trade Group, LLC



Michelle Pace
INTL FCStone Inc.



Mechel Paggi
National Crop Insurance Services



Kurt Peterson
The Scouler Company



Steve Reno
DuPont Pioneer



Katie Rock



Gwyn Schramm
Monsanto Company



Marlo Schulz



Bill Stambaugh
Austin Hardware & Supply, Inc.



Andrea Steele
Shook, Hardy & Bacon, LLC



Kay Stinson
Seaboard Foods



Jason Tatge
Farmobile



Scott Todd
Valent U.S.A. Corporation



Quentin Tyler
University of Kentucky



Russ Weathers
Agriculture Future of America



Jim Welch
Growth Leader



Daren Williams
National Cattlemen's Beef Association



Jeff Wilson
CGB Enterprises, Inc.



Jeff Zyskowski
Ardent Mills

Track 3 – Thursday, November 5

1:30 p.m.	Registration	Lobby
4:00 p.m.	Welcome Session AFA Student Advisory Team Russ Weathers, Agriculture Future of America Dr. Lowell Catlett	Exhibit Hall B
6:00 p.m.	Dinner	Exhibit Hall A
7:15 p.m.	Track Orientation and Group Discussion	Atlanta
9:00 p.m.	Mocktails	Terrace

Track 3 – Friday, November 6

7:00 a.m.	Breakfast	Exhibit Hall B
7:45	Morning Message	Atlanta
8:00 a.m.	Influencers of Change Across Generations Jim Welch, Growth Leader	Atlanta
9:00 a.m.	Opportunity Fair	Exhibit Hall A
11:00 a.m.	Adversity & Risk: How to Manage Your Agriculture-Focused Life Moderator: Daren Williams, National Cattlemen’s Beef Association Mark Berry, CGB Enterprises, Inc. Doug Miyamoto, Wyoming Department of Agriculture Andrea Steele, Shook, Hardy & Bacon, LLC	Atlanta
12:00 p.m.	Lunch	Exhibit Hall B
1:00 p.m.	You Have a Job Offer ... Do You Take it? Heather Benson, Cargill, Inc.	Atlanta
2:00 p.m.	Networking Break	
2:15 p.m.	Executive Forum on Global Agriculture Introduction and Moderator: Beth Bechdol, Ice Miller, LLP Brian Barker, Dow AgroSciences Todd Basteau, Bunge North America Del Birkhofer, Boehringer Ingelheim Vetmedica, Inc. Grady Bishop, Elanco Animal Health Scott Bormann, Merck Animal Health Doug Childers, Archer Daniels Midland Company Daren Coppock, Agricultural Retailers Association Inci Dannenberg, Bayer CropScience Chet Esther, GROWMARK, Inc. Jamie Flood, John Deere Richard Fordyce, Missouri Department of Ag. Dave Gebhardt, FarmLink, LLC Jamey Grafing, CHS Inc. Chuck Hammond, Nationwide Insurance Vern Hawkins, Syngenta Jason Hess, Union Pacific Railroad Robert Joseph, Parnell Ruth Kimmelshue, Cargill, Inc. Mark O'Donnell, Lansing Trade Group, LLC Mechel Paggi, National Crop Insurance Services Kurt Peterson, The Scoular Company Steve Reno, DuPont Pioneer Gwyn Schramm, Monsanto Company Bill Stambaugh, Austin Hardware & Supply, Inc. Kay Stinson, Seaboard Foods Scott Todd, Valent U.S.A. Corporation Jeff Wilson, CGB Enterprises, Inc. Jeff Zyskowski, Ardent Mills	Atlanta
5:15 p.m.	Track Meeting	Atlanta
5:30 p.m.	Networking Break	
6:00 p.m.	Leader in Agriculture Reception	Exhibit Hall A
7:00 p.m.	Leader in Agriculture Award Dinner	Exhibit Hall B

Track 3 – Saturday, November 7

7:00 a.m.	Breakfast	Exhibit Hall B
7:45 a.m.	Morning Message	Atlanta
8:00 a.m.	Investment Knowledge Adam Carroll, National Financial Educators	Atlanta
9:45 a.m.	Networking Break	
10:00 a.m.	Project Management Essentials Sarah Bohnenkamp Brian Cox, FranklinCovey	Atlanta New York
12:00 p.m.	Lunch	Exhibit Hall B
1:00 p.m.	Project Management Essentials (Cont.)	
3:00 p.m.	Networking Break	
3:15 p.m.	Track 3 Breakouts <i>Family Dynamics in Agriculture Business</i> Ron Hanson, University of Nebraska <i>Navigating an Entrepreneurial Path</i> Moderator: Sandy Kemper, C2FO Lance LeMay, OPENAIR Equity Partners Jason Tatge, Farmobile <i>The Next Step: Post Graduate Opportunities in Agriculture</i> Moderator: Quentin Tyler, University of Kentucky Shotika Cox, Dow AgroSciences Jason Croat, CTE Global, Inc. Tracie Egger, Purdue University Chelsea Good, Livestock Marketing Association Paul Kirbach, Monsanto Company Clem Neely, SEK Genetics Michelle Pace, INTL FCStone Inc. Katie Rock	San Francisco Atlanta New York
5:15 p.m.	Track Meeting	San Francisco, Atlanta, New York
6:00 p.m.	Track 3 Departs Hotel	Lobby
6:30 p.m.	Dinner, Service & Entertainment	Arrowhead Stadium

Track 3 – Sunday, November 8

6:30 a.m.	Continental Breakfast	Exhibit Hall B
7:00 a.m.	Fellowship (Optional) Marlo Schulz	Van Horn
8:00 a.m..	Morning Message	Atlanta
8:15 a.m.	Making a Positive Impact Richard Fagerlin, Peak Solutions	Atlanta
10:15 a.m.	Networking Break	
10:30 a.m.	AFA and Your Future Russ Weathers, Agriculture Future of America Kyle Gustafson, 2016 AFA Alliance Chair Mara Gordon, 2016 AFA Alliance Membership Chair	Atlanta
12:00 p.m.	Lunch & Closing Session <i>Let Go of the Rope</i> Jolene Brown	Exhibit Hall B
1:30 p.m.	Adjourn	

Track 4



Track 4 is a unique capstone experience for seniors who have been involved in multiple tracks of the AFA program. Building on the competency development from previous years, Track 4 is a highly interactive, participant-directed program. Sessions focus on making the transition from college to career and discussing individual and collective impacts to global agricultural issues. Discussion groups, participant-led facilitation and pre-conference preparation add value to the experience. Extensive executive mentoring is an integral part of Track 4.

Thank you to all presenters, many of whom volunteer their services, for making this program possible for the next generation of agriculture leaders.

Track 4 Speakers



Philip Anderson
ReThink! Consulting Group



Michael Baird
Beck's Hybrids



Brad Blaha
South Dakota State University



Krista Bock
Monsanto Company



Geri Hayes
Bunge North America



Loren Heeringa
Land O'Lakes, Inc.



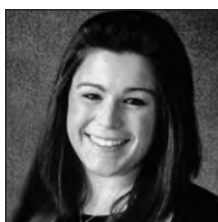
Annie Hernandez
Annie Hernandez Consulting



Todd Long
Leadership Innovations



Joel Mathiowetz
Farm Gate Consulting, LLC



Jessica Milstein
Archer Daniels Midland Company



Michael Patrick
DuPont Pioneer



Ambassador Kenneth Quinn
World Food Prize



Orion Samuelson
WGN Radio and RFD-TV



Marlo Schulz



Dave Smith
John Deere



James Spellos
Meeting U



Annie Storey
Agriculture Future of America



Kip Tom
Tom Farms



Russ Weathers
Agriculture Future of America



Jake Worcester
Kansas 4-H Foundation

Track 4 — Thursday, November 5

1:00 p.m.	Registration	Lobby
2:00 p.m.	Track 4 Welcome & Orientation Annie Storey, Agriculture Future of America Jake Worcester, Kansas 4-H Foundation	Chouteau AB
4:00 p.m.	Welcome Session AFA Student Advisory Team Russ Weathers, Agriculture Future of America Dr. Lowell Catlett	Exhibit Hall B
6:00 p.m.	Dinner	San Francisco
6:30 p.m.	Facilitation Training Todd Long, Leadership Innovations	Empire ABC
9:00 p.m.	Mocktails	Terrace

Track 4 — Friday, November 6

7:00 a.m.	Breakfast	Exhibit Hall B
7:45 a.m.	Morning Meeting	Chouteau AB
8:00 a.m.	Building the New Leader Jake Worcester, Kansas 4-H Foundation	Chouteau AB
9:00 a.m.	Opportunity Fair	Exhibit Hall A
11:15 a.m.	Lunch Preparation Annie Storey, Agriculture Future of America	Chouteau AB
11:45 a.m.	AFA Board of Directors' Luncheon	Empire
1:15 p.m.	Transition to Work Geri Hayes, Bunge North America Loren Heeringa, Land O' Lakes, Inc. Michael Patrick, DuPont Pioneer Dave Smith, John Deere	Chouteau AB
2:15 p.m.	Networking Break	
2:30 p.m.	Open Mic: Global Awareness in Agriculture Moderator: Orion Samuelson, WGN Radio and RFD-TV Ambassador Kenneth Quinn, World Food Prize Kip Tom, Tom Farms	Chouteau AB
4:00 p.m.	Networking Break	
4:15 p.m.	Hot Technologies 2016: It's Augmented and Wearable, but Are You Secure? James Spellos, Meeting U	Chouteau AB
5:15 p.m.	Track Meeting	Chouteau AB
5:30 p.m.	Networking Break	
6:00 p.m.	Leader in Agriculture Reception	Exhibit Hall A
7:00 p.m.	Leader in Agriculture Award Dinner	Exhibit Hall B

Track 4 — Saturday, November 7

7:00 a.m.	Breakfast	Exhibit Hall B
8:00 a.m.	Leadership Skills to Get You There Annie Hernandez, Annie Hernandez Consulting	Chouteau AB
9:45 a.m.	Networking Break	
10:00 a.m.	Leadership Skills to Get You There (Cont.)	Chouteau AB
12:00 p.m.	Lunch	Exhibit Hall B
1:00 p.m.	Fireside Chat with Russ Weathers Russ Weathers, Agriculture Future of America	Chouteau AB
2:00 p.m.	Networking Break	
2:15 p.m.	Servant Leadership: Application in Life and Careers Philip Anderson, ReThink! Consulting Group	Chouteau AB
3:30 p.m.	Networking Break	
3:45 p.m.	Servant Leadership (Cont.)	Chouteau AB
5:00 p.m.	Track Meeting	Chouteau AB
5:15 p.m.	Networking Break	
6:00 p.m.	Depart Hotel — Meet in Chouteau to depart as a group with AFA staff	
6:30 p.m.	Dinner and Networking with AFA Alliance	Kemper Museum of Contemporary Art

Track 4 — Sunday, November 8

6:30 a.m.	Continental Breakfast	Exhibit Hall B
7:00 a.m.	Fellowship (Optional) Marlo Schulz	Van Horn
7:45 a.m.	Morning Meeting	Chouteau AB
8:00 a.m.	Pursuing Lifelong Leadership Michael Baird, Beck's Hybrids Brad Blaha, South Dakota State University Krista Bock, Monsanto Company Jessica Milstein, Archer Daniels Midland Company	Chouteau AB
9:45 a.m.	Why the AFA Alliance? Joel Mathiowetz, Farm Gate Consulting, LLC	Chouteau AB
10:00 a.m.	Networking Break	
10:15 a.m.	Track 4 Decompressed Annie Storey, Agriculture Future of America Jake Worcester, Kansas 4-H Foundation	Chouteau AB
12:00 p.m.	Lunch & Closing Session <i>Let Go of the Rope</i> Jolene Brown	Exhibit Hall B
1:30 p.m.	Adjourn	

AFA Board of Directors



Pete Goetzmann
Vice President
ADM Grain Company



Jamey Graefing
Vice President and
Corporate Treasurer
CHS Inc.



Geri Hayes
Vice President
Human Resources
Bunge North America



Ben Kaehler
U.S. Sales Lead
Dow AgroSciences



Carol Keiser-Long
President
C-Bar Cattle Company
and C-ARC Enterprises



Alexander Kemper
Chair & Founder
C2FO
AFA Board of Directors Chair



Mariner Kemper
Chairman and CEO
UMB Financial Corporation



Ruth Kimmelshue
President and Business Unit
Leader, Value Added Meats
Cargill, Inc.



Greg Krissek
CEO
Kansas Corn



Dr. Thomas L. Payne
Vice Chancellor & Dean
College of Agriculture,
Food & Natural Resources
University of Missouri



Steve Reno
Vice President, Regional
Business Director U.S. &
Canada
DuPont Pioneer



Orion C. Samuelson
Agricultural Services Director
WGN Radio and RFD-TV



Gwyn Schramm
U.S. Agronomy Lead
Monsanto Company



L. Joshua Sosland
Vice President
Sosland Companies, Inc.



Kevin Stiles
Sr. Vice President
Marketing & Industry
Coordination
Midwest Dairy Association



Bob Timmons
Director of Marketing
Agriculture and Turf Division
(U.S. and Canada)
John Deere

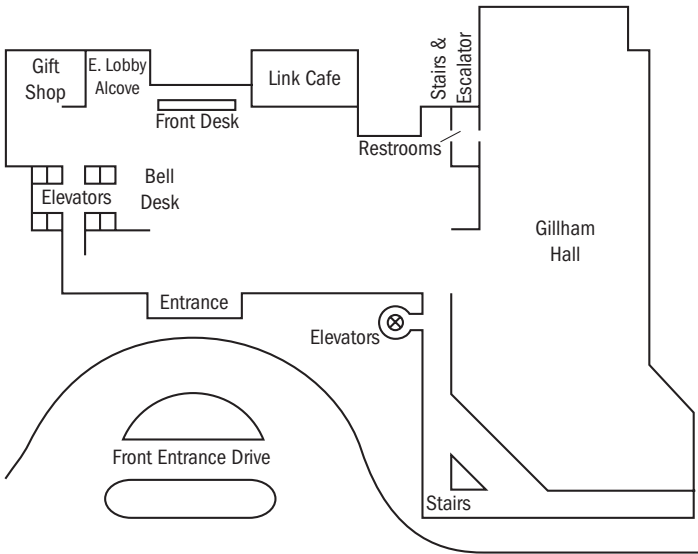


Mike Vande Logt
Executive Vice President &
COO, WinField Solutions
Land O'Lakes



K. Russell Weathers
CEO
Agriculture Future of
America

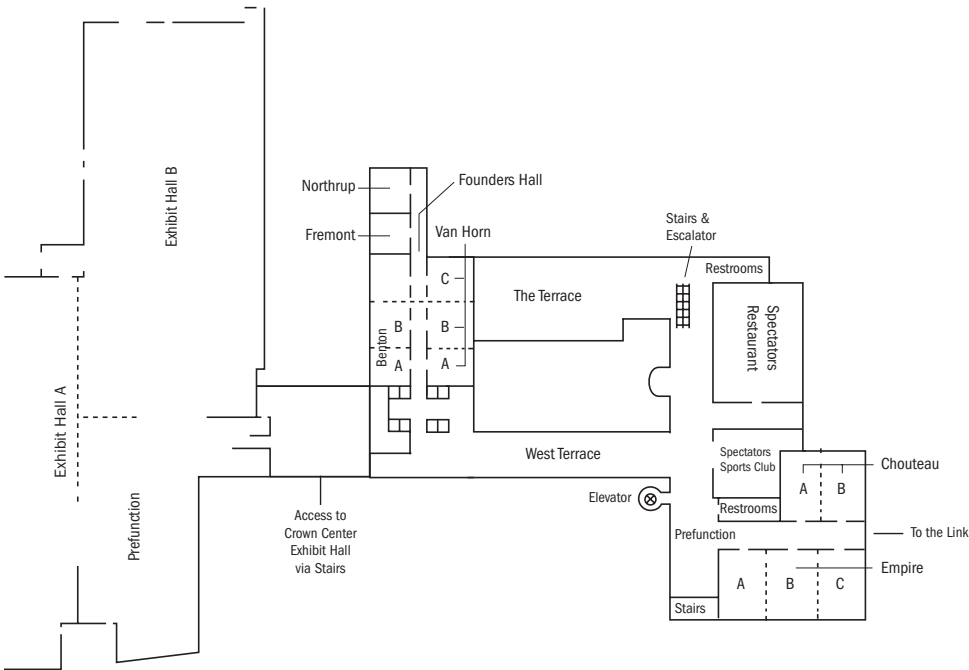
Sheraton Kansas City Hotel at Crown Center



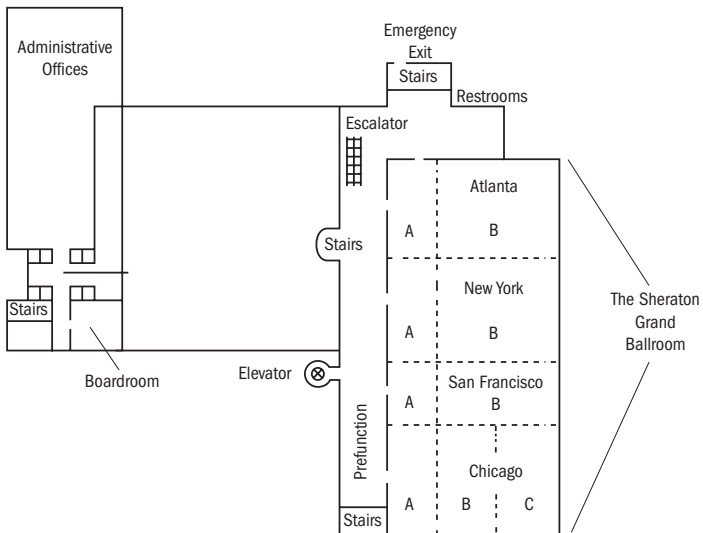
Lobby Level — 1st Floor

Sheraton Kansas City
Hotel at Crown Center
2345 McGee Street
Kansas City, MO 64108

AFA Conference Office
East Lobby Alcove



Mezzanine Level — 2nd Floor



Ballroom Level — 3rd Floor



Agriculture Future of America
www.agfuture.org

THE VOICE THE CATALYST THE FUTURE

www.agfuture.org

@AgFutureAmerica

#AFALC15