



Coimisiún na Scrúduithe Stáit  
State Examinations Commission

Leaving Certificate Examination

# Geography

Part Two

Higher Level

2 hours 50 minutes

400 marks

Do not hand this up.

This document will not be returned to the  
State Examinations Commission.

## **PART TWO – STRUCTURED and ESSAY QUESTIONS – 320 MARKS**

You must attempt **FOUR** questions. This must include one question from three of the sections below.

- Section 1 – **Patterns and Processes in the Physical Environment** (Questions 1-3)
- Section 2 – **Regional Geography** (Questions 4-6)
- Section 3 – **Electives** (Questions 7-12)
- Section 4 – **Options** (Questions 13-24)

The fourth question can be from any section.

All questions carry equal mark.

***THESE QUESTIONS ARE TO BE ANSWERED IN THE ANSWERBOOK CONTAINING PART ONE***

**SECTION 1**  
**PATTERNS AND PROCESSES IN THE PHYSICAL ENVIRONMENT**

**Questions 1 to 3**

All questions carry 80 marks.

**Question 1**

**1A. Ordnance Survey Map**

Examine the 1:50 000 Ordnance Survey map and legend accompanying this paper.

Draw a sketch map of the area shown to half scale.

On it, correctly show and label each of the following:

- The complete course of the River Feale
- Mark on your sketch map with the letter **X**, the confluence of the River Feale and the Smearlagh River
- An area of coniferous plantation to the north west of Listowel
- An area of land above 200 metres east of easting 02.

**[20m]**

**1B. Rocks**

Examine the formation of **two** sedimentary rocks, with reference to examples from Ireland.

**[30m]**

**1C. Human Interaction with Surface Processes**

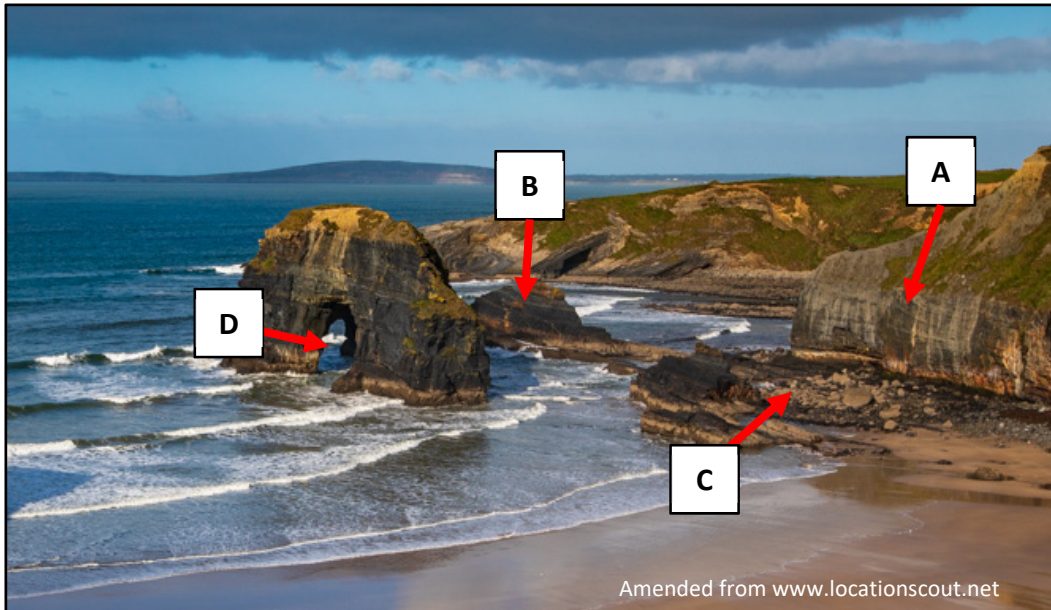
Examine how human activity impacts on surface processes with reference to **one** of the following:

- The impact of flood control measures on river processes
- The impact of coastal defence work on coastal processes
- The impact of human activity on mass movement.

**[30m]**

## Question 2

### 2A. Coastal Landforms



Examine the photograph above which shows a coastal area and answer each of the following questions.

- (i) Name the coastal landforms labelled **A**, **B**, **C** and **D** above.
- (ii) What is the name for the process that transports eroded material along the coastline?
- (iii) Explain briefly what is meant by *destructive waves*.
- (iv) Name **and** explain briefly **one** process of coastal erosion.

[20m]

### 2B. Earthquakes

With reference to example(s) you have studied, explain how the occurrence of earthquakes can be predicted **and** their effects reduced.

[30m]

### 2C. Human Interaction with the Rock Cycle

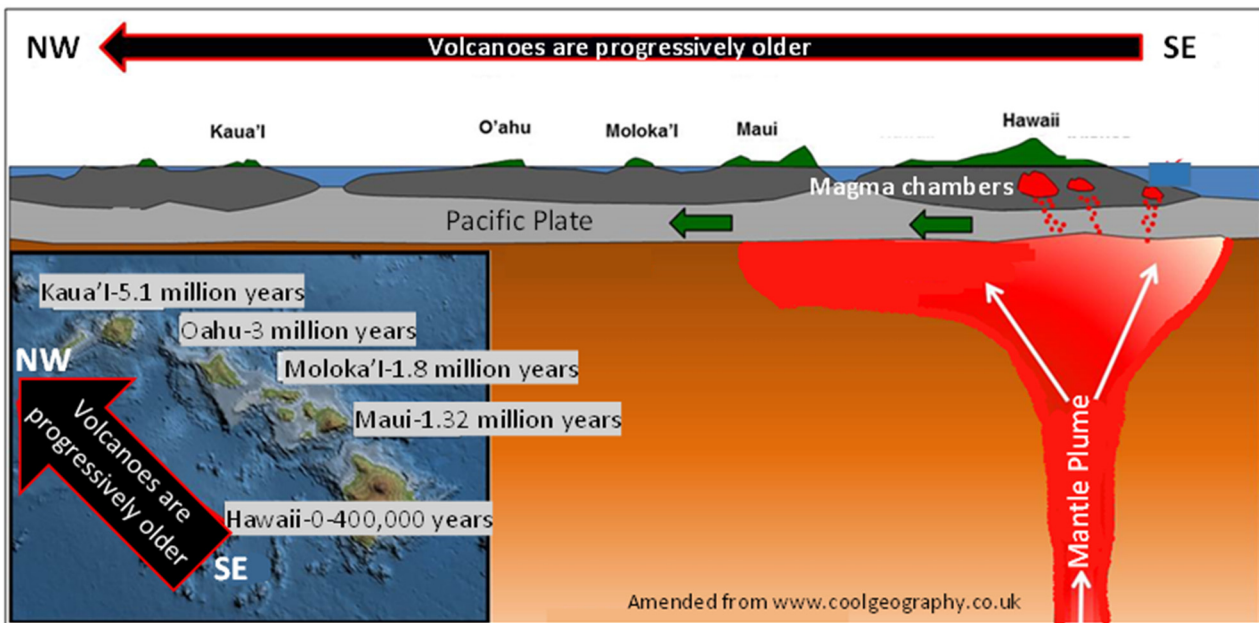
Examine how humans interact with the rock cycle, with reference to **one** of the following:

- Mining
- Extraction of building materials
- Oil/gas exploitation
- Geothermal energy production.

[30m]

### Question 3

#### 3A. Hot Spots



Examine the map and diagram above and answer each of the following questions.

- What is the name of the youngest volcanic island **and** the oldest volcanic island shown above?
- In which direction is the Pacific plate moving?
- How many years ago did the volcanic island of Oahu form?
- Name **two** materials that are ejected from a volcano during an eruption.
- Explain briefly the term *lithosphere*.
- Explain briefly what is meant by *basic* lava.

[20m]

#### 3B. Surface Processes

Answer (i) or (ii)

- Examine the role of the **process of deposition** on the formation of **one** fluvial landform **or one** coastal landform **or one** glacial landform that you have studied.

Or

- Describe and explain **the factors governing the operation** of **one** process of mass movement that you have studied.

[30m]

#### 3C. Plate Boundaries

Describe and explain destructive plate boundaries.

[30m]

**SECTION 2**  
**REGIONAL GEOGRAPHY**

**Questions 4 to 6**

All questions carry 80 marks.

**Question 4**

**4A. Map Skills**

Draw an outline map of a **European** region (not in Ireland) that you have studied.

On it, show and name each of the following:

- The outline of **one** named feature of relief (upland or lowland)
- **One** named urban centre
- The course of **one** named river
- **One** named transport route/feature.

[20m]

**4B. Secondary Economic Activity**

Account for the development of **one** secondary economic activity in an **Irish** region that you have studied.

[30m]

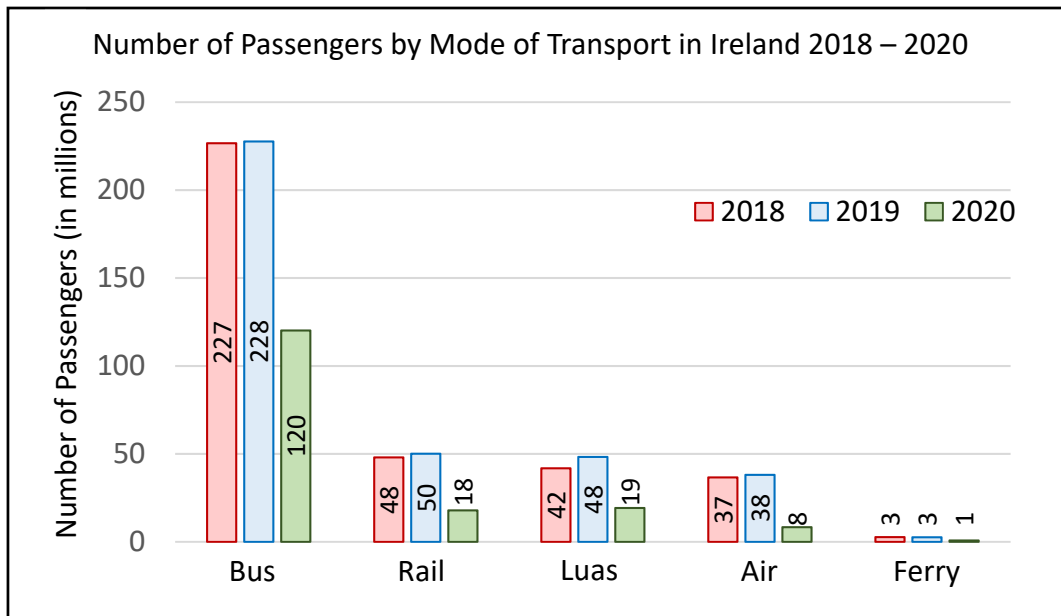
**4C. Population Dynamics**

Account for population distribution throughout a **Continental / Sub-continental** region (not in Europe) that you have studied.

[30m]

## Question 5

### 5A. Irish Transport



Amended from CSO

Examine the bar chart above which shows information on transport in Ireland in 2018, 2019 and 2020 and answer the following questions.

- Which mode of transport carried the most passengers in 2019?
- Which mode of transport had the largest growth between 2018 and 2019?
- Calculate the difference between the number of passengers (in millions) who travelled by Luas in 2019 and 2020.
- Name **two** international passenger ferry terminals in Ireland.
- Explain briefly **one** reason why the number of passengers on all types of transport fell in 2020.
- Explain briefly **one** benefit of more people using public transport.

[20m]

### 5B. Primary Economic Activity

Explain **two** factors that influenced the development of **one** primary economic activity in a **Continental / Sub-continental** region (not in Europe) that you have studied.

[30m]

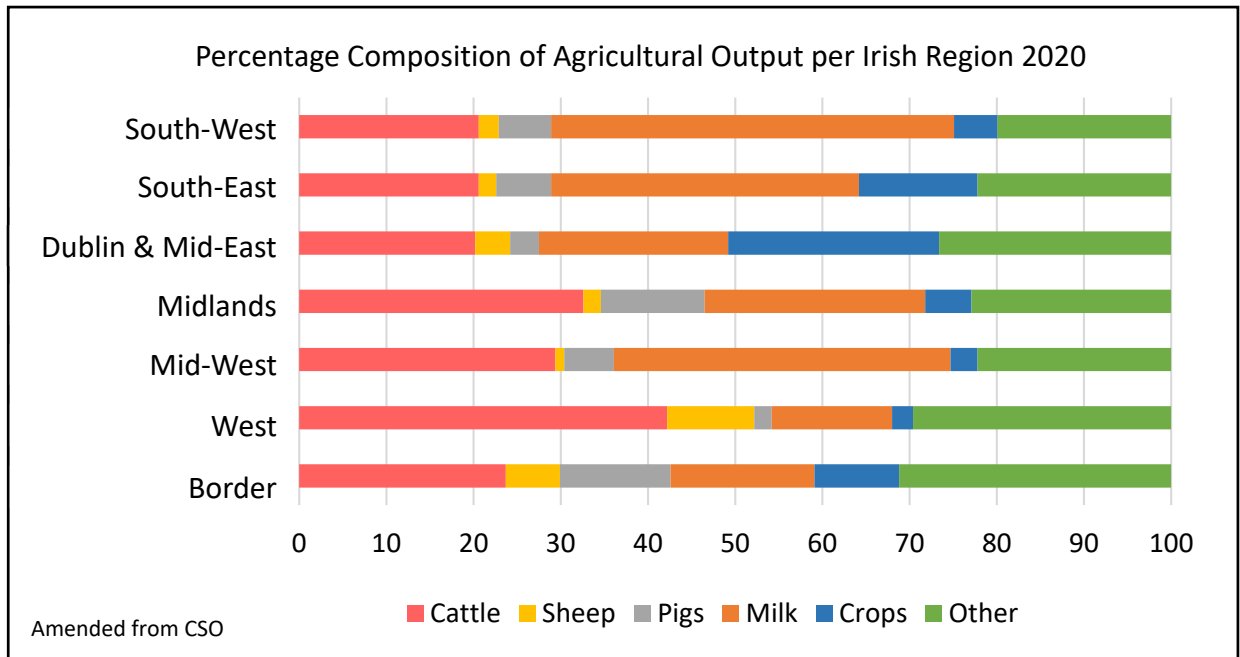
### 5C. Industrial Decline

Examine the causes **and** impacts of industrial decline with reference to any region(s) that you have studied.

[30m]

## Question 6

### 6A. Irish Agriculture



Examine the stacked bar chart above showing the percentage composition of agricultural output per Irish region in 2020 and answer each of the following questions.

- Which region had the highest percentage output of cattle in 2020?
- What output had the smallest percentage share in the Mid-West region?
- Name the **two** regions that had the highest percentage output in crops.
- Name **one** crop commonly grown in Ireland.
- Explain briefly what is meant by the term *market gardening*.
- Name **and** explain briefly **one** European Union policy that influences the development of agriculture.

[20m]

### 6B. Socio-Economic Regions

Examine how the characteristics of core regions **and** the characteristics of peripheral regions impact on economic activity, with reference to **European** regions (not in Ireland) that you have studied.

[30m]

### 6C. Cultural Regions

Examine how culture can be used to define regions, with reference to example(s) that you have studied.

[30m]

**SECTION 3**

**ELECTIVES**

**Questions 7 to 12**

**Patterns and Processes in Economic Activities (Questions 7, 8 and 9)**

**Patterns and Processes in the Human Environment (Questions 10, 11 and 12)**

All questions carry 80 marks.

## **PATTERNS AND PROCESSES IN ECONOMIC ACTIVITIES**

### **Questions 7 to 9**

#### **Question 7**

##### **7A. Aerial Photograph**

Examine the aerial photograph of Listowel accompanying this paper.

Draw a sketch map of the aerial photograph, half the length and half the breadth.

On it, correctly show and label each of the following:

- The river
- A bridge
- An industrial area in the left background
- A brownfield site suitable for redevelopment.

**[20m]**

##### **7B. Developing Economy**

Examine the challenges resulting from colonisation faced by an economy in the developing world that you have studied.

**[30m]**

##### **7C. European Union Policy**

Examine the impact of European Union policy on regional development in Ireland.

**[30m]**

## Question 8

### 8A. Gross Domestic Product

**Gross Domestic Product per Capita  
in Selected Countries 2021**

Country	GDP per Capita (in \$ thousands)
Portugal	25
USA	66
Sweden	58
Norway	76
Singapore	62
New Zealand	41

Amended from [www.visualcapitalist.com](http://www.visualcapitalist.com)

Examine the data above showing the breakdown of the Gross Domestic Product (GDP) per Capita for selected countries in 2021 and answer each of the following questions.

- (i) Using graph paper, draw a suitable graph to illustrate this data.
- (ii) Explain briefly what is meant by *Gross Domestic Product per Capita (GDP)*.

[20m]

### 8B. Economic Development – Developed Economy

Examine the development of **one** of the following with reference to a developed economy that you have studied:

- Footloose industries
- Financial services
- Mass tourism.

[30m]

### 8C. Location of Economic Activity

Examine the 1:50 000 Ordnance Survey map and legend accompanying this paper.

Explain **two** reasons why a computer factory might choose to locate in the area covered by the map **and** explain **one** reason why a computer factory might choose not to locate in this area.

Use evidence from the Ordnance Survey map to support each reason.

[30m]

## Question 9

### 9A. Irish Trade



Study the infographic above showing information on Irish trade from 2021 and answer each of the following questions.

- What was the value (in €billion) of Ireland's imported goods that came from the UK?
- Name **one** product shown on the infographic that was exported from Ireland in 2021.
- What was the quantity of potatoes (in tonnes) imported into Ireland in 2021?
- Name **two** examples of services exported from Ireland.
- Calculate Ireland's balance of trade for 2021 (in €billion).
- State whether Ireland's balance of trade for 2021 was a trade deficit **or** trade surplus.
- Explain briefly **one** way that Brexit has impacted on Ireland's trade patterns.

[20m]

### 9B. Multinational Company

With reference to **one** multinational company that you have studied, describe and explain any **two** of the following:

- Sourcing of raw materials and components
- Location of processing units
- Location of markets.

[30m]

### 9C. Conflict of Interest

Examine how conflict can arise between economic interests and environmental interests regarding the exploitation of resources, with reference to example(s) that you have studied.

[30m]

## **PATTERNS AND PROCESSES IN THE HUMAN ENVIRONMENT**

### **Questions 10 to 12**

#### **Question 10**

##### **10A. Aerial Photograph**

Examine the aerial photograph of Listowel accompanying this paper.

Draw a sketch map of the aerial photograph, half the length and half the breadth.

On it, correctly show and label each of the following:

- The river
- A graveyard in the left foreground
- An ecclesiastical building in the left middleground
- An off-street carpark.

**[20m]**

##### **10B. Migration**

With reference to a developed region that you have studied, explain the impact of migration on **each** of the following:

- Rural areas
- Urban areas

**[30m]**

##### **10C. Central Place Theory**

Describe and explain Central Place Theory with reference to example(s) that you have studied.

**[30m]**

## Question 11

### 11A. Displaced Populations

Origin of World's Displaced Population (%) in 2021

Country	Percentage (%)
Syrian Arab Republic	27
Afghanistan	11
Venezuela	18
Myanmar	5
South Sudan	9
Other Countries	30

Amended from [www.unhcr.org](http://www.unhcr.org)

Examine the data above showing the origin of the world's displaced population in 2021 and answer each of the following questions.

- (i) Using graph paper, draw a suitable graph to illustrate this data.
- (ii) Explain briefly **one** push factor that forces people to leave their homes.

[20m]

### 11B. Historical Settlement

Examine the 1:50 000 Ordnance Survey map and legend accompanying this paper and answer each of the following questions.

- (i) Name **and** locate using six-figure grid references, **three different** phases of historical settlement evident on the Ordnance Survey map.
- (ii) Explain briefly each of the **three** phases of historical settlement named by you in part (i) above.

[30m]

### 11C. Urban Land-use

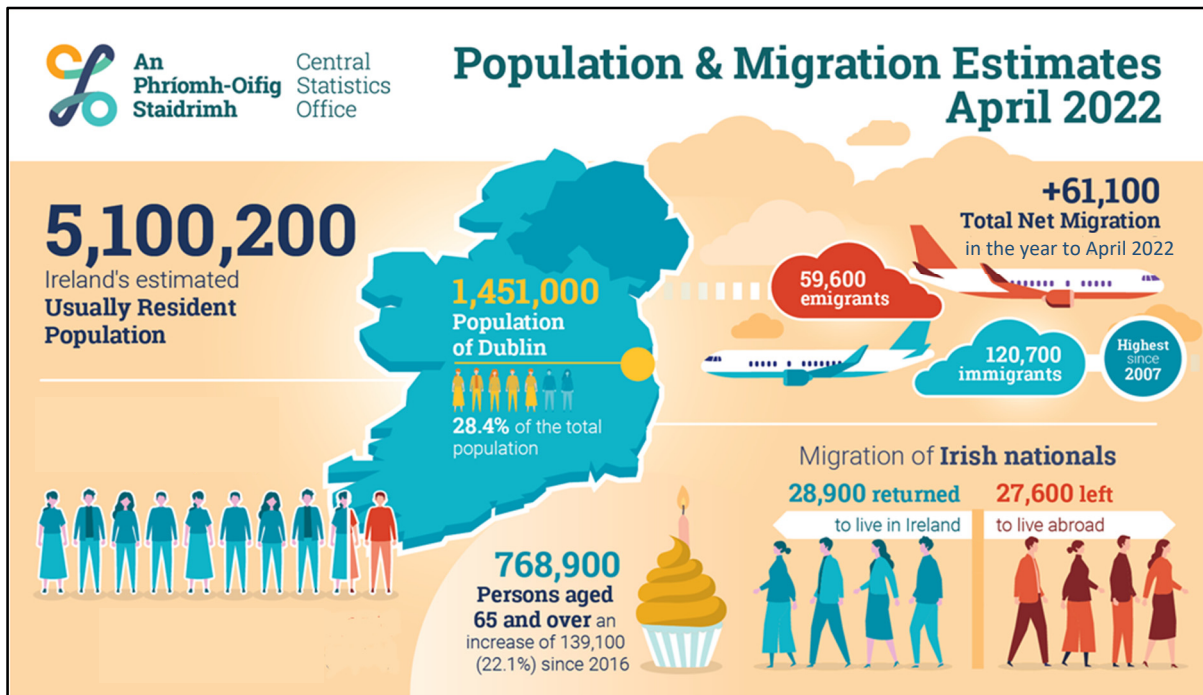
Examine how the location of **two** of the following land-uses has changed in an Irish city that you have studied:

- Industrial land-use
- Residential land-use
- Commercial land-use.

[30m]

## Question 12

### 12A. Population Change in Ireland



Examine the infographic above showing the population and migration estimates to April 2022 and answer each of the following questions.

- What percentage (%) of Ireland's population lived in Dublin according to estimates?
- What was the estimated total number of immigrants into the country in the year to April 2022?
- Calculate the estimated number of people living in Ireland who are aged under 65 years of age.
- State **two** reasons why Irish people emigrate.
- Explain briefly **one** challenge created by having more people aged 65 and over.
- Explain briefly **one** benefit to Ireland of inward migration.

[20m]

### 12B. Urban Growth – Developing World City

Problems can develop from the growth and expansion of urban centres.

Discuss this statement with reference to **one** developing world city that you have studied.

[30m]

### 12C. Overpopulation

Examine **one** cause **and one** effect of overpopulation, with reference to example(s) that you have studied.

[30m]

## **SECTION 4**

### **OPTIONS**

#### **Questions 13 to 24**

All questions carry 80 marks.

**Note:** It is better to discuss **three** or **four** aspects of the theme in some detail, rather than to give a superficial treatment of a large number of points.

## Global Interdependence

**Note:** It is better to discuss **three** or **four** aspects of the theme in some detail, rather than to give a superficial treatment of a large number of points.

13. Discuss the causes and impacts of **one** global environmental issue that you have studied. [80m]
14. Examine the influence of Eurocentric thinking on views of development and underdevelopment. [80m]
15. Sustainable exploitation of resources represents both a challenge and an opportunity. Discuss. [80m]

## Geoecology

**Note:** It is better to discuss **three** or **four** aspects of the theme in some detail, rather than to give a superficial treatment of a large number of points.

16. Describe and explain the composition and characteristics of **one** Irish soil type that you have studied. [80m]
17. Examine how any **three** of the processes below have influenced soil formation, with reference to example(s) that you have studied: [80m]
- Weathering
  - Leaching
  - Humification
  - Soil erosion.
18. Examine the characteristics of **one** biome that you have studied, with reference to any **three** of the following: [80m]
- Climate
  - Soils
  - Flora
  - Fauna.

## Culture and Identity

**Note:** It is better to discuss **three** or **four** aspects of the theme in some detail, rather than to give a superficial treatment of a large number of points.

19. Examine the strategies that have been or could be implemented to aid the survival of minority languages. [80m]
20. Conflicts can occur between political structures and cultural groups. Discuss. [80m]
21. Examine the impact of colonialism and migration on ethnic/racial patterns. [80m]

## The Atmosphere – Ocean Environment

**Note:** It is better to discuss **three** or **four** aspects of the theme in some detail, rather than to give a superficial treatment of a large number of points.

22. Describe and account for the specific characteristics of **one** global climate type you have studied. [80m]
23. Exchanges of water between oceans and atmosphere, over the earth's surface, impact on precipitation and its distribution patterns. Discuss. [80m]
24. Describe the formation of each of the following **and** discuss its impact on weather patterns: [80m]
- Mid-latitude depressions
  - Anticyclones
  - Land and sea breezes.

Do not hand this up

This document will not be returned to the  
State Examinations Commission.

Do not hand this up

This document will not be returned to the  
State Examinations Commission.

**Copyright notice**

This examination paper may contain text or images for which the State Examinations Commission is not the copyright owner, and which may have been adapted, for the purpose of assessment, without the authors' prior consent. This examination paper has been prepared in accordance with Section 53(5) of the *Copyright and Related Rights Act, 2000*. Any subsequent use for a purpose other than the intended purpose is not authorised. The Commission does not accept liability for any infringement of third-party rights arising from unauthorised distribution or use of this examination paper.

Leaving Certificate – Higher Level

**Geography Part Two**

2 hours 50 minutes