



Earth Imaging for Rail

By Tracsis

Used by site portfolio managers
to locate, manage and plan

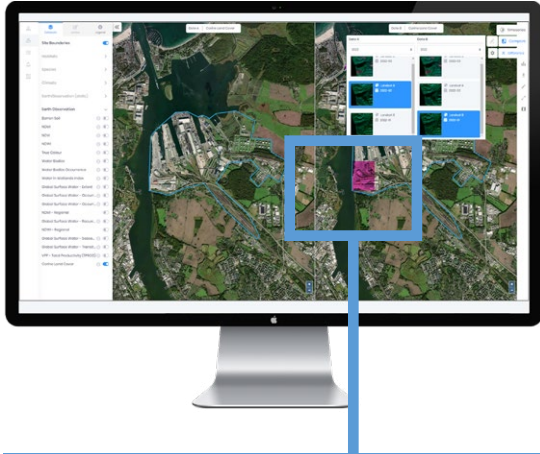
Asset sustainability for changing environments

Email info@railcomm.com or phone +1 585-377-3360



RAILCOMM
Automated Rail Solutions

Locate, Manage and Plan



Compare the impact of changing environment on your assets

Used by site portfolio managers to locate, manage and plan for asset sustainability in a changing environment

Map Assets

Map assets: Add your road equipment, rail signal points, transport infrastructure and assets to the application and view them in a map centric interface.

Profile Locations

Build a profile for asset locations using historic data: Combine satellite imagery and asset data to profile locations e.g. gradient, soil moisture, proximity to residential areas or water features.

Trigger Alerts

Use real time data and ground based observations to trigger alerts & notifications: Integrate with weather data, sensor APIs or other 3rd party data to trigger alerts for adverse conditions and cue operational site visits.

Technical Overview

- **Innovation** – change detection, machine learning and pattern prediction algorithms applied to data feeds, satellite imagery, asset data and integrate IoT WebServices
- **Hosting** – the solution can be deployed to your cloud or on-prem environment and integrated with your Active Directory details for full Single Sign On functionality.
- **Pricing** – flexible pricing models with pricing per user and levels of functionality that can be tailored to your requirements

Take Action

Manage and measure the impact of actions: The mitigating actions to protect assets can be supported by the system, results tracked, and impacts measured to enhance sustainability.

Plan for Change

Plan for change: combine analysis of historic data with models of future predictions to manage risk and plan for environmental change e.g. changes in water level, flooding, land subsidence, and their impact on your asset.

Software-based rail automation solutions

Talk to our team to discuss your project or for a demonstration of our capabilities



+1 585-377-3360



info@railcomm.com



1387 Fairport Rd Building 900,
Fairport, NY 14450 USA