

Date \_\_\_\_\_

Name \_\_\_\_\_

Salesperson \_\_\_\_\_

Address \_\_\_\_\_

Primary Phone \_\_\_\_\_

City \_\_\_\_\_ State \_\_\_\_\_ Zip \_\_\_\_\_

Other Phone \_\_\_\_\_

County \_\_\_\_\_ Email \_\_\_\_\_

Spa Brand & Model: \_\_\_\_\_

Color: \_\_\_\_\_

**Cover Style\***

**Other Dimensions:**

- ☐ **ThermoShield Cover**  
Features 4" to 2" 1 lb. foam, VaporShieldPE heat sealed barrier, steel C-channel reinforcements, standard handles and (4) locking tie-down straps.
- ☐ **ThermoShield Plus Cover**  
Features 4" to 2" 2 lb. foam, double thick VaporShieldPE heat sealed barrier, full-length linear heat seal along hinge, steel C-channel reinforcements, premium rubber grip handles and (4) locking tie-down straps.
- ☐ **ThermoShield Elite Cover**  
Features 6" to 4" 2 lb. foam, double thick VaporShieldPE heat sealed barrier, full-length linear heat seal along hinge, steel C-channel reinforcements, premium rubber grip handles and (4) locking tie-down straps.

Length: \_\_\_\_\_

Width: \_\_\_\_\_

Skirt: (Default is 3"): \_\_\_\_\_

**Corners:**

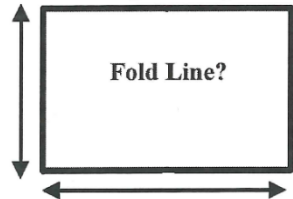
Radius: \_\_\_\_\_

Square: \_\_\_\_\_

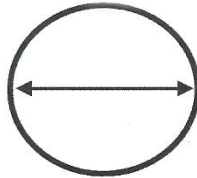
\*All cover thicknesses are approximate

**Cover Type:** (Please Circle and write dimensions next to or on the arrows)

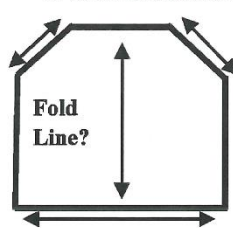
**Rectangle / Square**



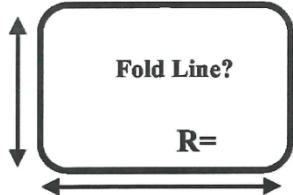
**Round**



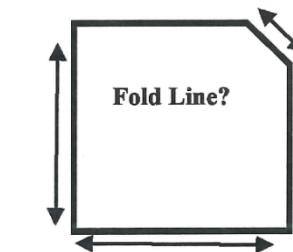
**2 Cut Corners**



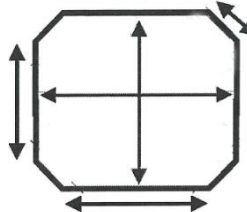
**Radius Corners**



**One Cut Corner**



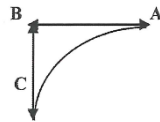
**4 Cut Corner**



**Radius Corners**

1. Use two rulers to extend the sides of your spa to a point where the sides would have met (Point B) if the corner had been square.
2. Points A & C are where the curve ends on the spa.
3. The radius is the distance in inches from "B to A" or "B to C" – whichever is SMALLER.

Or  
Provide a tracing of the outside curve.



**Cover Cost:** \_\_\_\_\_

**Cover Lift:** \_\_\_\_\_

**Delivery Charge:** \_\_\_\_\_

**Subtotal:** \_\_\_\_\_

**Tax:** \_\_\_\_\_

**Total:** \_\_\_\_\_

**Non-Refundable Deposit:** \_\_\_\_\_

**Balance Due:** \_\_\_\_\_

Eastgate Pools cannot hold product indefinitely and the buyer is asked to accept delivery of the product in a reasonable time frame. Deposits will be forfeited after three months unless prior agreement is made at the time of the sale. At that time, full ownership of the product reverts back to Eastgate Pools and the product will be eligible for re-sale. In cases where delays are caused by inclement weather that does not permit installation, this period will be extended until the weather allows installation to proceed. Verbal contracts between the customer and sales representatives are not binding. All agreements must be in writing.

I authorize the cover to be made as specified. All covers come with one handle and two straps on two sides. (We cannot control exact locations of straps or handles.) Once order is placed, there are no refunds. Covers taken from current inventory are not returnable once box is opened.

Buyer: \_\_\_\_\_ Date: \_\_\_\_\_ Approximate Arrival Date: \_\_\_\_\_