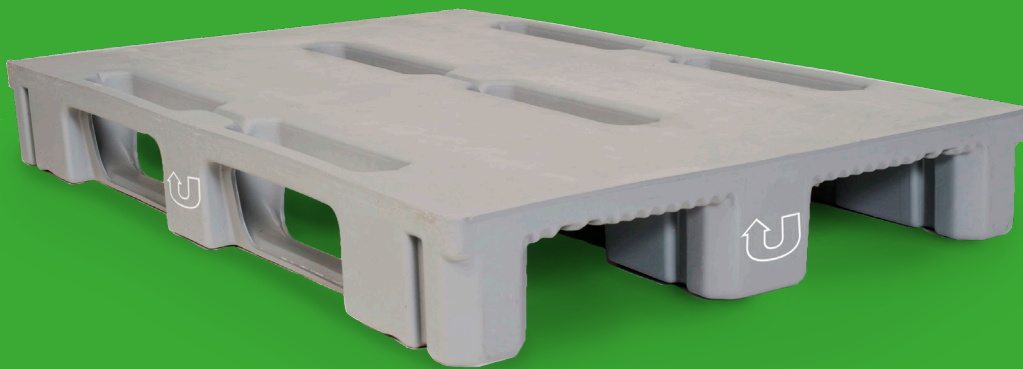


To people shipping goods on SRS pallets

Count all pallets!



Did you know SRS pallets form part of the shipment?

All of the pallets you pick up must be delivered to the recipient. The pallets are part of an extensive pooling system and subject to a daily rental fee. If you repack the load in the truck and retain pallets, the sender will have to pay for pallets the recipient never receives.

Remember that:

- You are responsible for ensuring that the goods also include the pallets. All of the pallets you pick up must be delivered to the recipient.
- Pallets missing on delivery will be treated as lost goods.
- The pallets belong to SRS and may never be sold on.

If you have any questions or concerns, contact SRS Customer Service.

Together, we make the food chain sustainable!