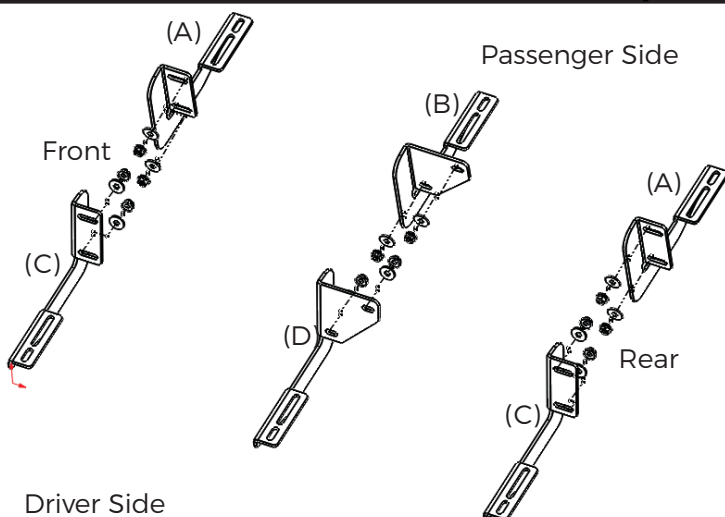


BRACKET KIT

19-CURRENT DODGE RAM CREW CAB

IAT-82082, 83 & 84



Hardware:

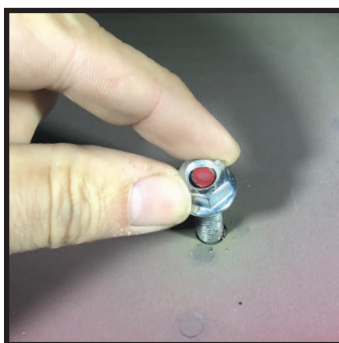
Bracket (A) Pass. front & rear bracket	2
Bracket (B) Pass. middle bracket	1
Bracket (C) Drivers front & rear bracket	2
Bracket (D) Drivers middle bracket	1
Zinc 8mm Serrated Flange Nut.....	12
Zinc 8mm Washers - 24mm OD	12

Running Board Hardware:

M8-1.25 Zinc Serrated Flange Nut.....	12
M8 x 24mm Zinc Flat Washer.....	12

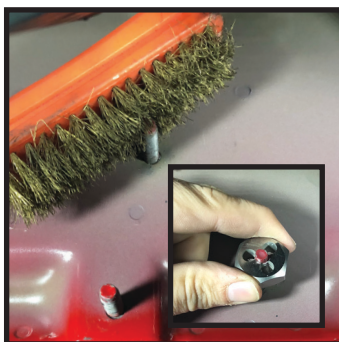
STEP 1:

Before installing the brackets you need to assure the OE stud threads are clean and free from debris and paint. Try threading the supplied nuts to the studs. If there is hesitation do not force on.



STEP 2:

First use a wire brush to clean threads. If nuts still struggle to thread on use a die (8mm-1.25) to clean the threads. After cleaning the provided nuts should thread easily.



STEP 3:

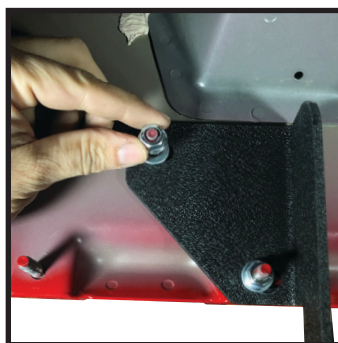
Place bracket over studs, place washer and thread serrated flange nut to each stud. Hand tighten at this time.

Note: the front and rear bracket mount like picture shown here.



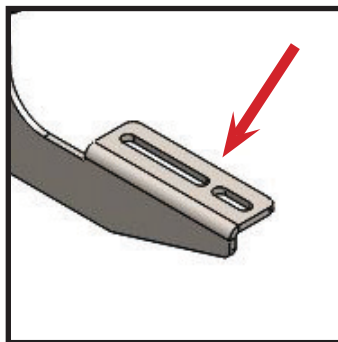
STEP 4:

This picture shows how the middle bracket mounts.



STEP 5:

Place running board/ Step onto the top of the brackets and attach as directed.



STEP 6 (Drivers Side):
Avoid using power or air tools. Tighten to 20ft lbs torque to secure the board to the truck.

