

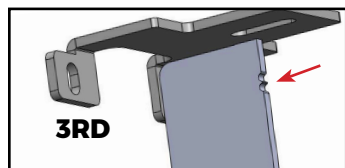
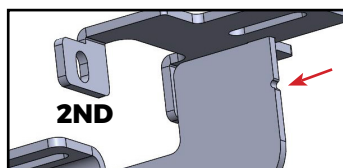
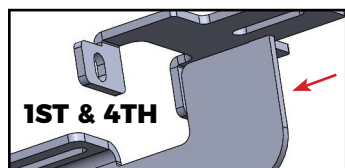
2019-CURRENT JEEP GLADIATOR JT

Hardware:

Bracket (location 1 & 4, no notch).....	4
Bracket (location 2, one notch).....	2
Bracket (location 3, two notch).....	2
Bolt M8 X 30mm.....	24
Washer M8, 15mm OD.....	40
Flange Nut M8.....	16
Bolt M6 x 30mm.....	2
Washer M6, 12mm OD.....	4
Lock Washer M6.....	2
Nut M6.....	2

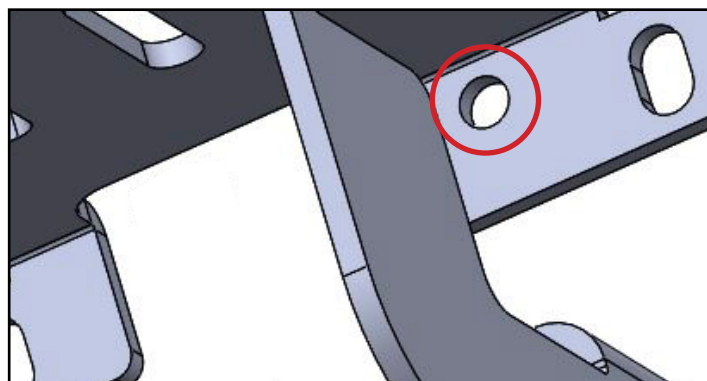
STEP 1:

Remove existing OE steps from Jeep Gladiator.



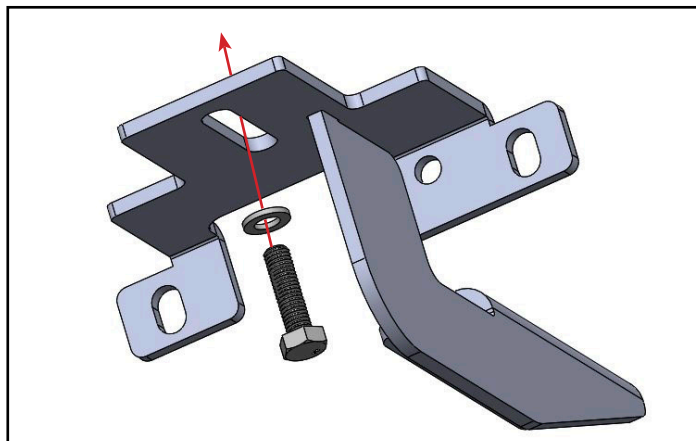
STEP 2:

There are three brackets in your kit. The first and fourth location bracket are the same and has no notch. The second location bracket has a notch on the backside of the bracket. The third location bracket has two notches.



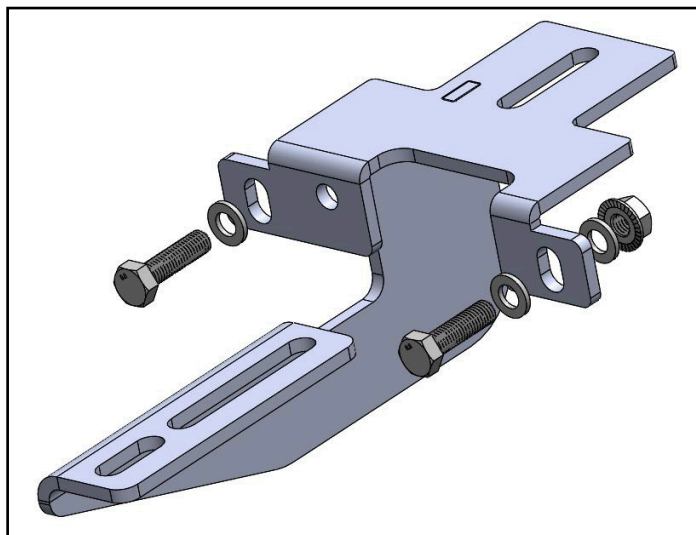
STEP 3:

At bracket location one (furthest forward location). The bracket has a hole for the OE plastic pin to fit through. This pin is found on the back of the pinch weld.



STEP 4:

Take a M8 bolt and flat washer feed through the bracket and into the threaded hole under the Jeep body. Just hand tighten at this time.



STEP 5:

Take a M8 bolt and flat washer feed through the pinch weld of the Jeep then through the bracket. Use flat washer, serrated flange nut and hand tighten.

Avoid using power or air tools. Tighten all bracket hardware to 20ft lbs torque to secure the bracket to the vehicle.

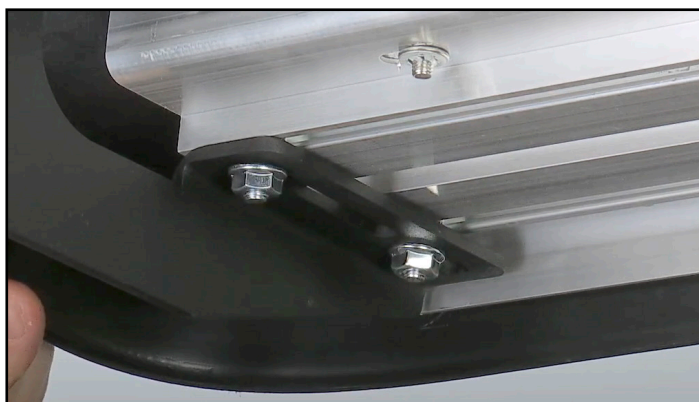
We have included 2 M6 bolts, washers and nuts. We have found the mounting hole near the plastic pin towards the front of the Jeep can be smaller. If the M8 bolt works use it but if it struggles to fit use the M6 hardware instead.

**2018-CURRENT
JEEP WRANGLER JL****Hardware:**

Running Board.....	2
Bolt 5/16" X 3/4".....	12
Flange Nut 5/16".....	12

**STEP 6:**

To install running boards on the brackets, obtain the board bolt pack included with the board you selected. Take the 5/16" X 3/4" long bolts, slide the head of the bolts down the channels on the underside of the board. Three bolts in both channels.

**STEP 7:**

Place board on installed mounting brackets. Align the bolts with the slots on the brackets and drop then into place. Thread the provided 5/16" flange nuts onto the bolts, do not fully tighten just yet. Adjust board left to right and in and out to your desired position. **Avoid using power or air tools.** Tighten all board hardware to 20ft lbs torque to secure the board to the bracket.