



2 0 2 2
G L O B A L

ENGLISH

ACRYLIC SOLID SURFACE

WIDE MATERIAL
FOR WIDE IDEAS



AVONITE®

WIDE AND FLEXIBLE. THE SOLUTION TO ACCOMPLISH YOUR BOLDEST PROJECTS.

AVONITE® is a solid surface material composed of 63% alumina trihydrate, 35% acrylic and 2% pigments and binders. It is produced at the Aristech Surfaces LLC plant, in Florence (KY), USA, one of the most flexible and scalable production lines in the world. Aristech Surfaces LLC relies on its experience and expertise to supply a reliable Solid Surface material.

COLORFUL

Complemented by a range of colors specially selected, AVONITE® offers tones and textures suited to the creation of harmonious spaces. Homogeneous throughout its thickness, the material allows for careful cutouts, as well as the sanding of its surface, capable of giving it a lustred sheen at all times.



THERMOFORMABLE

AVONITE® sheets become supple and malleable when exposed to the heat of special ovens. One thing is certain: with its organic shapes and rounded corners, the material's gentle curves provide comfort and warmth to any interior design.



TRANSLUCENT

Whether through the even and glossy translucence of Ice White or the creation of motifs trimmed in lighter colours, AVONITE® offers beautiful ways to treat light.



MONOLITHIC

AVONITE® adhesives are colour matched exactly to ensure seamless joints. Now you can create monolithic installations and counters stretching as far as the eye can see!



NUREMBERG EXHIBITION HALL,
Nuremberg, Germany, 2018
Builder: kpc GmbH
Fabrication: Roskopf + Partner AG
Design: SODA Projects & Design GmbH
Photos: NuernbergMesse/Heiko Stahl
AVONITE® Polaris 8256



ONE OF THE MOST ADVANCED PRODUCTION TECHNOLOGIES

The ability of our double belt production lines to create a multi-stage system, incorporating controlled heating, cooling and tempering – all within one press – enables the development of highly efficient processing solutions.

MORE DETAILS [PAGE 12](#)

RIGHT SIZE PROGRAM

OUR STANDARD FORMATS

AVONITE®'s **RIGHT SIZE** Program provides the ultimate in flexibility, saving time and labour costs.

MORE DETAILS [PAGE 14](#)



OUR COMMITMENT TO ECOLOGY

We see sustainability as more than just offering products with recycled content and regulatory compliance. It means having a responsibility to touch and improve lives by making a positive impact on others, now and for the future.

MORE DETAILS [PAGE 16](#)

VANCOUVER HOUSE, British Columbia, Canada

Photos: Ema Peter Photography

Fabrication: Westbank

AVONITE® Polaris 8256





PLANT FACADE, Saint-Quentin-Fallavier, France, 2019
Fabrication: LCCA
Photos: Iulian Rotaru
AVONITE® Snowfall 8090



Using AVONITE® as a cladding on the entry façade of this building enabled the reconciliation of design-related mechanical restrictions and the installation of a lighting system. The machined Solid Surface panels were mounted on a custom metal frame and attached using threaded inserts.

EXTERIOR

A NETWORK OF EXPERTS

We have a network of Solid Surface experts experienced in building facades, using our ETA certified AVONITE®, which you can aspire to use on the most ambitious projects.

The **RIGHT SIZE** Program also offers a competitive product portfolio that is perfectly suited to the creation of exterior façades.

For outdoor use, AVONITE® recommends 7 colours (see p. 18), for which we predict a UV resistance under ΔE 5 and gloss loss of less than 40% for a matte finish.

CASA-VOYAGEURS TRAIN STATION, Casablanca, Morocco, 2019

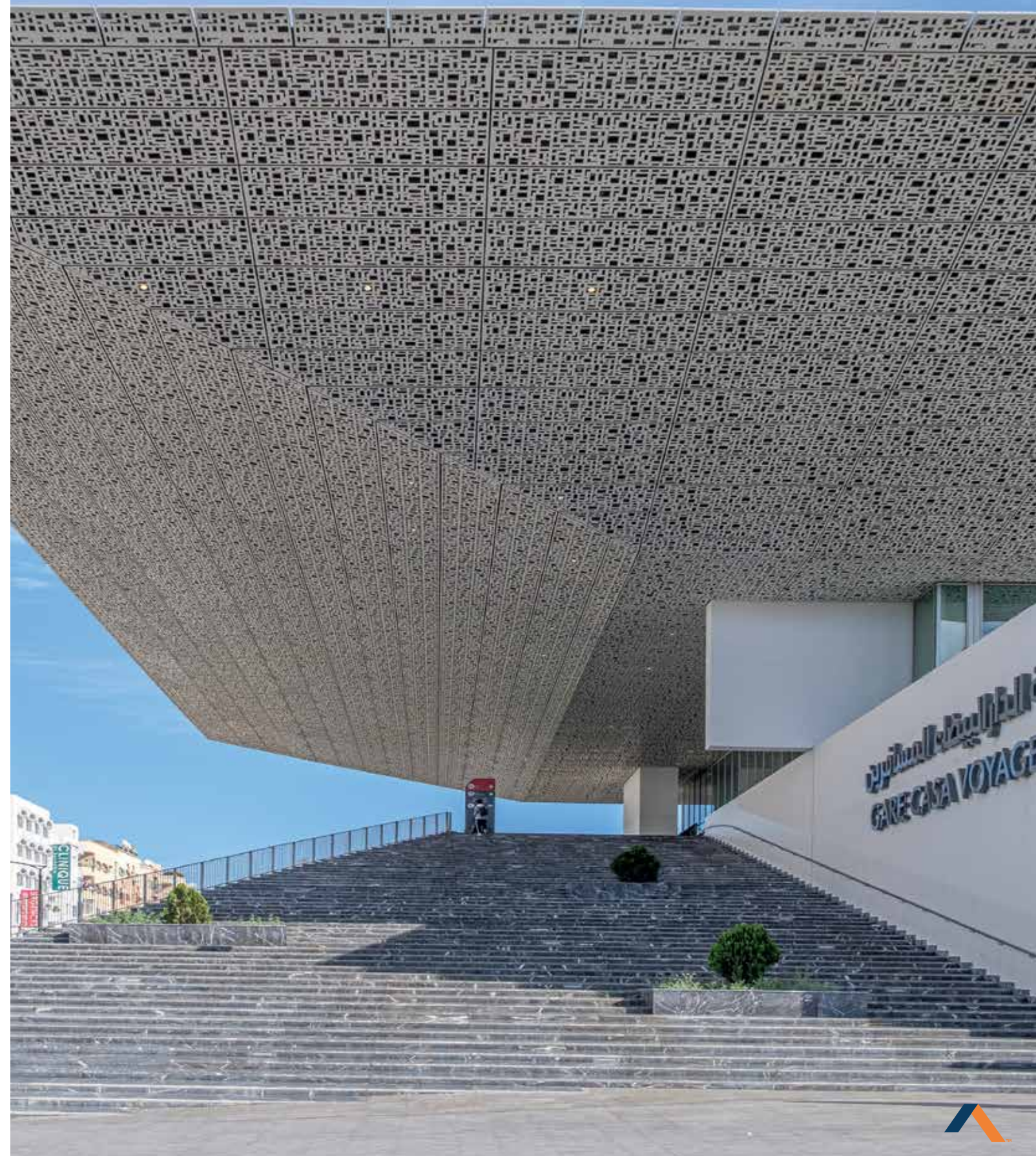
Architecture: Yassir Khalil Studio

Fabrication: Aeria 2

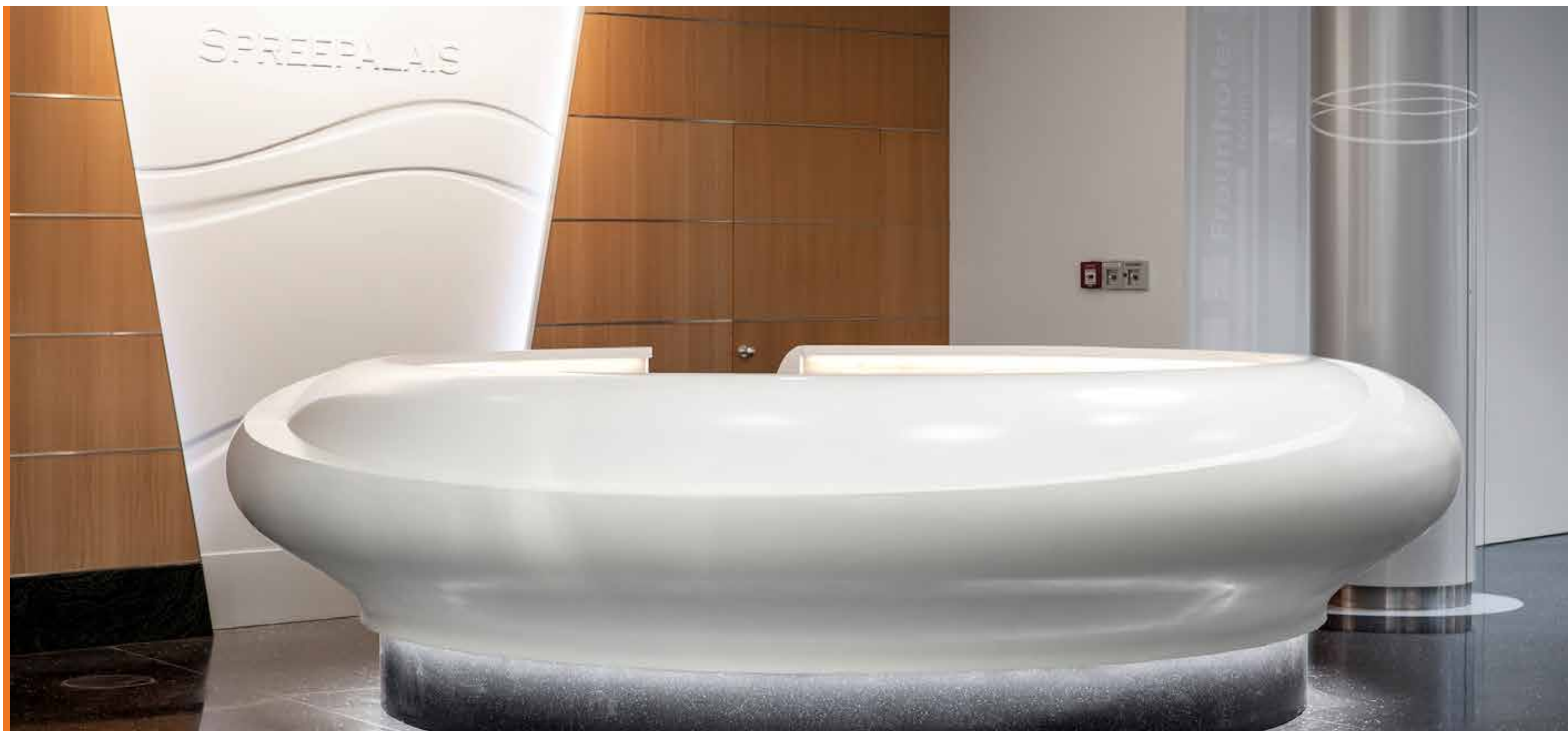
Photo: alessiomei.com

AVONITE® Snowfall 8090, 9 mm custom size sheet

With over 25 000 sq. metres of Solid Surface, the new Casablanca train station is currently one of the industry's biggest construction sites in the world. Fully entrusted to AVONITE®, this project involves cladding the building's entire roof, façade and ceiling.



SPREEPALAIS AM DOM,
Berlin, Germany, 2017
Design: neo system architects,
Resa Gartner
Project Management:
5D Engineering GmbH
Fabrication: Roskopf + Partner AG
**AVONITE® Polaris 8256,
Eclipse 8240**



COMMERCIAL

AVONITE® IS ABSOLUTELY VERSATILE

It can be found on both the countertops and walls of ultra-clean labs and the overworked reception desks at hotels.

THAT'S NOT ALL

AVONITE® is also used to produce flawless furniture for shops and museums.



HYGIENIC

The material's non-porous properties and the seamless assembly of furniture made of AVONITE® makes it extremely easy to clean. Its thermoforming capacity also allows for the creation of rounded backsplashes on lab benches, kitchen counters and restaurant furniture, which eliminates those hard to reach places.



DURABLE

AVONITE® is resistant to common household products and is easy to repair, thanks to the after sale servicing by one of our local partners. With its 15-year warranty on 12, 9 and 6 mm thicknesses and 10 year-warranty on the 3 mm thickness, AVONITE® will not fail you after your project is complete.



15
YEAR
WARRANTY



PRIVATE RESIDENCE, Pfungstadt, Germany, 2020

Fabrication: Roskopf + Partner AG

Photo: edelfotoGrafie! / Böhm Küchen

AVONITE® Porcelain 8066

A 100% AVONITE® look in this kitchen, featuring a worktop fitted with a seamless Solid Surface sink and flush-mounted stove. 3 mm-thick AVONITE® sheets also cover all of the cupboard doors and drawers.

RESIDENTIAL

Used for kitchen islands, vanity tops and shower bases in bathrooms, or modern furnishings, AVONITE® fits harmoniously into private residences.

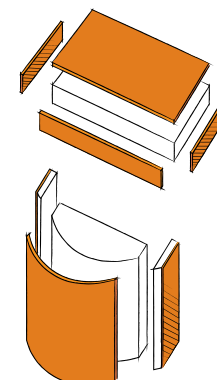


ADVANC3®

ARE YOU LOOKING FOR AN ALTERNATIVE TO LAMINATE AS A FURNITURE COVERING?

AVONITE® IS A GREAT SOLUTION!

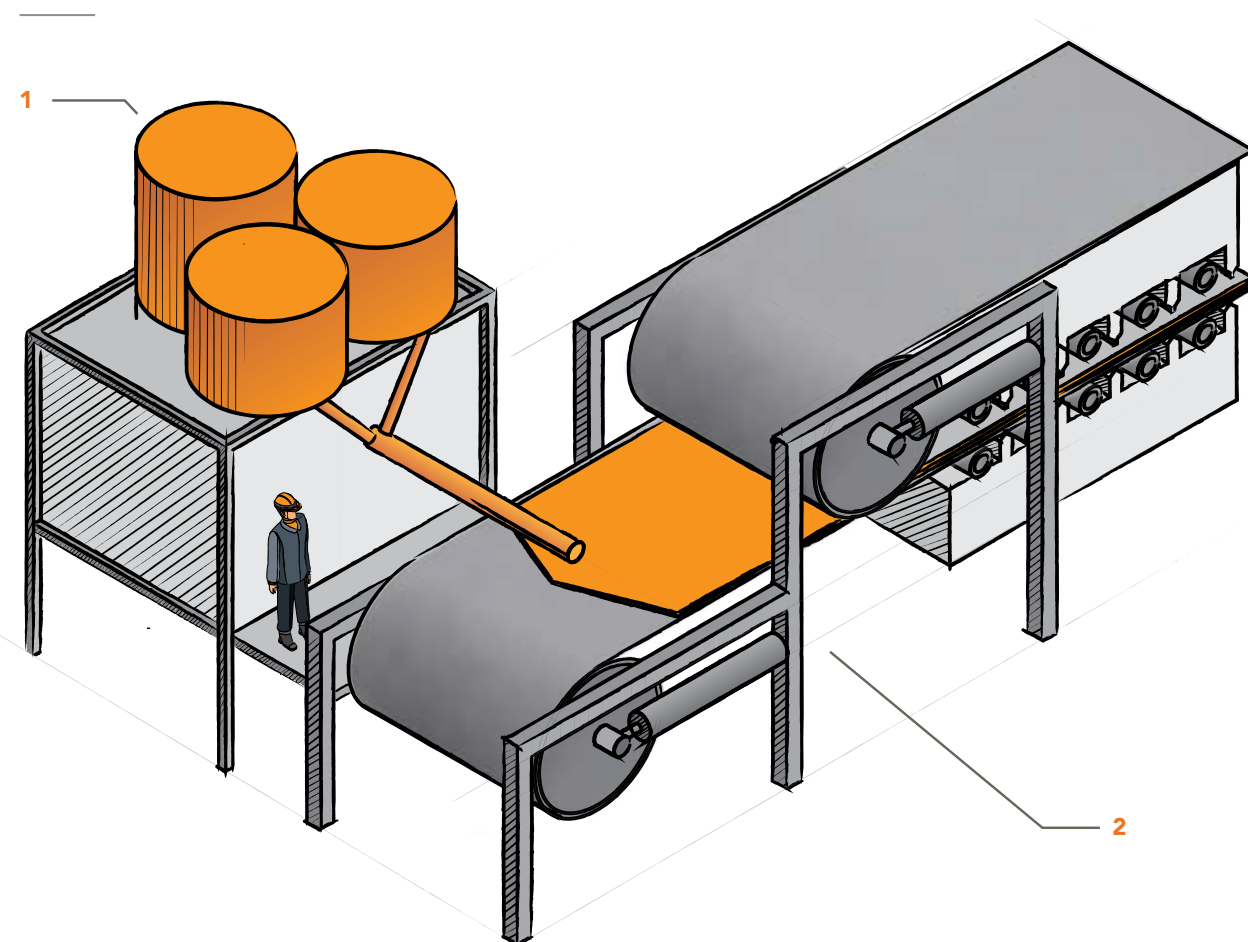
With its sheets just 3 mm thick, AVONITE® ADVANC3® offers all the properties and aesthetics of a Solid Surface at unbeatable prices. ADVANC3® can only be used on installations with no heat source at proximity.



ADVANCE®

ONE OF THE MOST ADVANCED PRODUCTION TECHNOLOGIES

THE ABILITY OF OUR DOUBLE BELT PRODUCTION LINES TO CREATE A MULTI-STAGE SYSTEM, INCORPORATING CONTROLLED HEATING, COOLING AND TEMPERING – ALL WITHIN ONE PRESS – ENABLES THE DEVELOPMENT OF HIGHLY EFFICIENT PROCESSING SOLUTIONS.



1 The manufacturing process begins with mixing of the constituent materials (Methyl Methacrylate, solution of pre-polymerised methyl methacrylate, Alumina Trihydrate, pigments, catalysts, and chips, if needed) in a batch vessel. The use of a batch vessel for mixing all the ingredients ensures that a well-mixed homogeneous mixture is delivered to the double-belt continuous cast process.

2 The compound product is then cast between the belts. Through the application of heat and pressure, the product is pressed, calibrated and cooled down under pressure. This system enables very high pressure to be delivered uniformly.

Often associated with a continuous cast production line, a double belt press typically includes top and bottom belts with heating elements and pressure mechanisms that transfer heat and pressure to the products between the belts. One of the major advantages to this machine is its ability to continuously hold product under heat for and cool to set good strength. Product is held securely throughout complete process.



BENEFITS OF OUR TECHNOLOGY

VERSATILE ADJUSTABLE PRODUCT WIDTH

The use of a double-belt continuous cast process allows the adjustment of the product width to any size between 686 mm and 1524 mm. Thanks to this highly efficient process, Aristech Surfaces LLC offers 3 different widths at no surcharge cost per m² and any other width between 686 mm and 1524 mm at a highly competitive price.

IMPECCABLE COLOUR CONSISTENCY

Continuous-casting optimises the mixing of ingredients to offer a perfect colour consistency not only within the same batch but even within different production batches ($\Delta E < 1$).

NARROW THICKNESS TOLERANCE

The thickness of the product – taking into account the shrinking effect – is easily adjusted by means of a high precision gear and spindle system that sets the gap between upper and lower belt. Consequence? AVONITE®'s tolerance on the thickness across a sheet is the lowest among any other Acrylic Solid Surface. Precision in manufacturing is key for the most ambitious projects and AVONITE® is meant to be part of them.

ECO-FRIENDLY MANUFACTURING

Realised without solvent and from a 100% monomer solution, the bulk polymerization of methyl methacrylate produced in the double-belt manufacturing process contributes to reduce the impact of Volatile Organic Compounds on environment. That's how AVONITE® has been classified by SCS Global Services at the most demanding level "Indoor Advantage Gold" for its capacity to preserve indoor air quality. And that's not all: with its symmetric heating and cooling system, this highly efficient system contributes to save energy. Finally, continuous-casting improves the yield and reduces scrap for an optimised usage of resources.



OUR RIGHT SIZE PROGRAM



OPTIMIZED SPECIFICATIONS

While there are many factors that contribute to project costs, **optimizing material requirements** can greatly impact profit margins and provide **value-engineering opportunities for large-scale projects**.

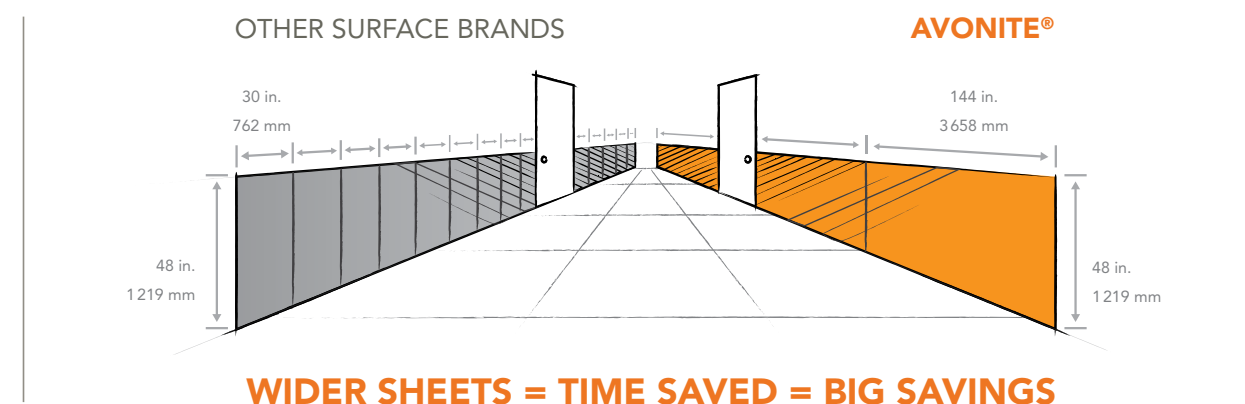
Utilizing flexible sheet sizes, project expenditure can be decreased through efficiencies and overhead cost-management. We offer our customers best practice and advice for sheet specifications for volume projects, including guidance on nesting, CNC and other optimization options.

As fabrication, installation and associated costs can often exceed 50% of overall project costs, there are significant savings that can be achieved with **RIGHT SIZE** sheets:

- Save on transit costs
- Lower disposal fees
- Reduce fabrication & labor time
- Meet sustainability goals
- Streamline installation
- Improve profitability

RIGHT SIZE sheets are made-to-order and manufactured directly to specification requirements. Formats can be determined by thickness, width, length and color. Exact sheet price will vary upon volume, color (solid or particulate) and complexity to manufacture.

Contact your regional manager to discuss minimum order quantities to meet your project needs.



84 in. x 27 in.
2 134 x 686 mm
SHEETS' MINIMUM DIMENSIONS

THICKNESS

3 mm
6 mm
9 mm
12 mm
19 mm

204 in. x 60 in.
5 182 x 1 524 mm
SHEETS' MAXIMUM DIMENSIONS





OUR COMMITMENT TO ECOLOGY

WE SEE SUSTAINABILITY AS MORE THAN JUST OFFERING PRODUCTS WITH RECYCLED CONTENT AND REGULATORY COMPLIANCE – IT MEANS HAVING A RESPONSIBILITY TO TOUCH AND IMPROVE LIVES BY MAKING A POSITIVE IMPACT ON OTHERS, NOW AND FOR THE FUTURE.

REUSE AND RECYCLE

At Aristech Surfaces LLC, we continually strive to improve our energy and water efficiency, landfill diversion, and air quality, using performance metrics we measure and report. Recent and ongoing environmental initiatives include conversion to LED lighting at our plants and offices, proactive recycling of office and industrial materials, high-efficiency motor upgrades to machine drives, industrial water filtration and recycling systems and thermal oxidizing units with heat recovery to reduce VOC emissions.

Finally, Aristech Surfaces LLC transport partner for Europe guarantees recycling of waste water, uses solar energy in the warehouse and trucks that run on gas.

INDOOR ENVIRONMENTAL QUALITY

AVONITE® has been awarded Indoor Advantage Gold by SCS Global Services and earned a score of A+ for the material's adherence to French regulations governing the emission of volatile organic compounds.

REDUCING WASTE

The **RIGHT SIZE** Program is another key component of our approach to sustainable design. The possibility of choosing the best format for your projects optimizes the material consumption to suit your needs.

ENERGY CONSERVATION

Historically, it's not a coincidence if we chose to work with a double-belt continuous cast technology. Equipped with a symmetric heating and cooling system, solvent free and allowing to reduce the waste to the lowest level, this manufacturing technique is one of the eco-friendliest.

Our recent efforts to conserve energy include updating boiler controls and eliminating an inert gas generator at our Belen, New Mexico facility; installing a new nitrogen system, which improved energy efficiency and reduced emissions. Our Florence, Kentucky site was re-lamped with LED technology, significantly reducing electrical consumption.

TRANSPARENCY AND DISCLOSURE

Expectations of transparency about the environmental and health impacts of building products are high in the green building market. Designers, specifiers and building owners want to know exactly what they are utilizing, encouraging the specification of products with documented declaration of contents and impacts. Aristech Surfaces LLC provides transparency documentation through EPDs, HPDs, and one Declare Labels.

RED LIST FREE

AVONITE® solid surface is Living Building Challenge Red List Free, containing none of the 800+ hazardous chemicals found in some building products.

Certified leader:



OUR CORE COLOR SELECTION

Whether the simple elegance of Kokoura, the subtle texture of Sandstorm, the purity of Snowfall or the vitality of Galactic Ice, AVONITE® offers a color range balanced between the latest trends and timeless classics.

Depending on the climate, the orientation and the application, AVONITE® recommends 6 colors for outdoor use (highlighted with a Δ hereunder). We predict a UV resistance under ΔE 5 and a gloss loss of less than 40% for a matt finish.

PRICE GROUP
FUNDAMENTALS

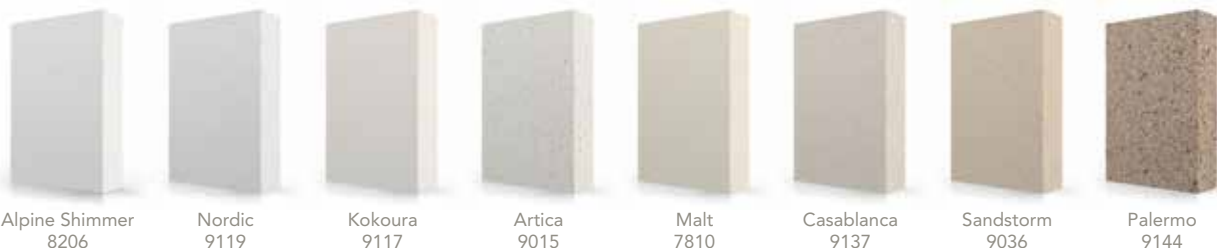
12MM SOLID SURFACE



PRICE GROUP A



PRICE GROUP B



PRICE GROUP C



PRICE GROUP D



ENRICHED COLOUR TECHNOLOGY

Our innovative AVONITE® formulation: Enriched Colour Technology delivers more intense colour and its improved mechanical properties make it more scratch resistant*. Enriched Colour Technology is available in the Eclipse colour.

* The colours produced with this technology are still more delicate than less pigmented colours and remain a B-category product.

Private residence, Belgium, 2020
Design and fabrication: Denis Margot
AVONITE® Eclipse 8240



WET WALL™ 6MM SOLID SURFACE



ADVANCE® 3MM SOLID SURFACE



The tones shown on this page may differ slightly from the actual colours. To be safe, make your choice based on samples.

Δ Recommended colours for outdoor use.

D These décors are heavily pigmented colours, and are prone to show scratches, dust, haziness, and ordinary wear and tear more easily than lighter textured décors. Therefore, these décors are not recommended for use in residential and commercial applications that will be subject to heavy use, and/or, horizontal application use, and will not be covered under the AVONITE® warranty in relation to claims for scratches of ordinary wear and tear.

♻ Contains Recycled Content
Colours marked with this acronym include recycled material and may therefore qualify for additional credits as part of the building's LEED accreditation.

HAVE A PROJECT IN PROGRESS?

Request the free colour samples of your choice on www.aristechsurfaces.com/avonite or ask for a visit from an AVONITE® expert.



TECHNICAL INFORMATION

THAT’S NOT ALL... RIGHT SIZE® PROGRAM

RIGHT SIZE can deliver measurable value and budget impact for sizable projects and installations..

Our **RIGHT SIZE** Program provides extensive flexibility in width, length and/or sheet thickness.

THE RIGHT FIT

The possibility of choosing the best format for your project not only optimizes material consumption; cutting, sanding, seaming and adhesive costs are lowered.

THE RIGHT CHOICE

We have a responsibility to make a positive impact on our environment, now and for the future. The RIGHT SIZE Program is another key component of our approach to sustainable design aiding landfill diversion and reduction in carbon footprint.

STADTWERKE NEUBRANDENBURG GMBH’S OFFICES, Neubrandenburg, Germany, 2019
Design: Raumeffekt die M belmanufaktur / PETZI + PETZI Architekten
Fabrication: Rosskopf + Partner AG
Photos: Andreas Muhs
AVONITE® Snowfall 8090



CHEMICAL DATASHEET

To determine stain and chemical resistance, chemical reagents are placed on the surface for 16 hours*. After the 16 hours period, reagents are removed using the cleaning methods described in the Technical Bulletin 201 (ISFA 2-01 and ANSI/ICPA SS-1 standards).

STAIN RESISTANCE

Stain resistance looks at the effect below the surface. The following reagents show no lasting effects on the surface of AVONITE® sheets when tested to the ISFA 2-01 cleanability/stain resistance standard:

- | | | | | |
|---------------------------|----------------------------------|----------------------------------|-------------------------|----------------------------|
| • Acetic Acid (10%) | • Dishwasher Detergent (Cascade) | • Hydrogen Peroxide Solution, 3% | • Mineral Oil | • Toluene |
| • Acetone | • Dishwashing Liquid | • Instant Coff | • Naphtha | • Tomato Juice |
| • B-4 Body Conditioner | • Distilled Water | • Isopropyl Alcohol (90%) | • Olive Oil | • Trisodium Phosphate (5%) |
| • Ball Point Ink Pen | • Ethanol | • Lemon Juice | • Pencil Lead | • Urea (6%) |
| • Black Paste Shoe Polish | • Ethyl Alcohol (90%) | • Lye Solution (1-2%) | • Permanent Marker | • Vegetable Oil |
| • Bleach (Household Type) | • Finger Nail Polish Remover | • Mercurochrome (2%) | • Pine Oil | • Vinegar |
| • Butyl Acetate | • Gasoline | • Methanol | • Povidone Iodine (10%) | • Wax Crayon |
| • Butyl Alcohol | • Household bleach | • Methyl Acetate | • Yellow Mustard | • Wet Pekoe Tea Bag |
| • Butyl Ether | • Household Ammonia | • Methyl Ethyl Ketone | • Sodium Sulfate (10%) | • Wine |
| • Catsup | • Hydrogen Peroxide | • Methyl Orange (1%) | • Soy Sauce | • Xylene |
| • Citric Acid (10%) | | • Methyl Red (1%) | • Sugar (sucrose) | • Zinc Chloride (10%) |
| • Cupra Ammonia | | | | |

CHEMICAL RESISTANCE

Chemical resistance is a measure of visible surface changes. The following reagents show no lasting effects on the surface of AVONITE® Acrylic Solid Surface sheets when tested to the ANSI/ICPA SS-1 standard:

- | | | | | |
|--|--------------------------------|-----------------------------------|------------------------------------|----------------------------|
| • Acetic Acid (10%) | • Bleach (Household Type) | • Nail Polish Remover | • Napthalene (Naptha) | • Sodium Hypochlorite (5%) |
| • Acetone | • Blood | • Gasoline | • Nitric Acid (6%) | • Sodium Sulfate (10%) |
| • Acridine Orange | • Butyl Acetate | • Hexane | • Olive Oil | • Soy Sauce |
| • AG Eosin Blue (5%) | • Butyl Alcohol | • Household Soaps | • Pencil Lead | • Sugar (Sucrose) |
| • AG Gentian Violet | • Butyl Ether | • Hydrogen Peroxide | • Perchloric Acid | • Tea |
| • Ammonia (10%) | • Catsup | • Hydrogen Peroxide Solution (3%) | • Permanent Marker Ink | • Toluene |
| • Ammonium Hydroxide (28%) | • Citric Acid (10%) | • Instant Coffee | • Picric Acid | • Tomato Juice |
| • Amyl Acetate | • Coffee | • Isopropyl Alcohol (90%) | • Pig Blood | • Trisodium Phosphate (5%) |
| • Amyl Alcohol | • Cupra Ammonia | • Lemon Juice | • Pine Oil | • Urea (6%) |
| • Aromatic Ammonia | • Dishwashing Liquid (Cascade) | • Lye Solution (1-2%) | • Povidone Iodine (10%) | • Uric Acid |
| • B-4 Body Conditioner | • Dishwashing Liquid (Dawn) | • Mercurochrome (2%) | • Yellow Mustard | • Urine |
| • Ball Point Pen | • Distilled Water | • Methanol | • Salt (Sodium Chloride) | • Vegetable Oil |
| • Betadine Solution | • Equalizing Accelerator | • Methyl Acetate | • Silica Dental Cement (liquid) | • Vinegar |
| • Bite Registration Accelerator (2% Eugenol) | • Ethanol | • Methyl Ethyl Ketone | • Silver Nitrate (10%) | • Wax Crayon |
| • Bite Registration Base | • Ethyl Acetate | • Methyl Orange (1%) | • Soapless Detergents | • Wet Pekoe Tea Bag |
| • Black Paste Shoe Polish | • Ethyl Alcohol (90%) | • Methyl Red (1%) | • Sodium Bisulfate | • Wine |
| | | • Mineral Oil | • Sodium Hydroxide Solution (<10%) | • Xylene |
| | | • Naphtha | | • Zinc Chloride (10%) |

The following reagents should not come into contact with AVONITE® sheets for long periods of time. These reagents may cause surface changes on the sheets that are more difficult to remove:

- | | |
|---------------------------------|------------------------------------|
| • Bite Registration Mix (50/50) | • Nail Polish |
| • Dry-Bond Dental Adhesive | • Nitric Acid (>25%) |
| • Eosine Methylene Blue | • Sodium Hydroxide Solution (>25%) |
| • Hydrochloric Acid (>20%) | • Sulfuric Acid (>25%) |

*Although the 16 hours period is standard test procedure, it is recommended to remove chemicals as soon as possible, to prevent damage to the surface.



PHYSICAL PROPERTIES

AVONITE® ACRYLIC SOLID SURFACING SHEETS

Aristech Surfaces LLC AVONITE® Acrylic Solid Surface sheet products provide exceptionally weatherable, strong, non-porous, scratch and stain resistant material for architectural designs and utilitarian surfaces.

			3 mm	6 mm	9 mm	12 mm			
PROPERTY	TEST METHOD	UNITS	SOLIDS	SOLIDS	SOLIDS	SOLIDS	SMALL PARTICULATE	MEDIUM PARTICULATE	LARGE PARTICULATE
GENERAL									
Density	ASTM D 792	g/cm³	1.73	1.73	1.73	1.73	1.60	1.62	1.63
Water Absorption	ASTM D 570	%	0.13	0.04	0.04	0.04	0.05	0.05	0.05
MECHANICAL									
Tensile strength	ASTM D 638	MPa	33.4	31.1	31.1	31.1	31.1	28.3	25.2
Tensile modulus	ASTM D 638	MPa	7010	10514	10514	10514	7142	8411	8204
Tensile elongation	ASTM D 638	%	1.40	0.40	0.40	0.40	1.00	0.55	0.45
Flexural strength	ASTM D 790	MPa	71.0	64.1	64.1	64.1	55.2	49.3	47.2
Flexural modulus	ASTM D 790	MPa	6070	8687	8687	8687	7329	7240	8067
Barcol hardness	ASTM D 2583	–	59	63	63	63	58	59	60
Rockwell hardness (m scale)	ASTM D 785	–	86	94	94	94	94	93	93
Charpy impact	ASTM D 6110	J/m	104.0	58.7	58.7	58.7	58.7	45.3	42.7
Ball impact (227g ball, no failure)	NEMA LD3-3.8	cm	–	–	305	>380	305	290	215
Ball Impact (227g ball, no failure) Supported	NEMA LD3-3.8	cm	>380	>380	–	–	–	–	–
Ball Impact (227g ball, no failure) Unsupported	NEMA LD3-3.8	cm	213	215	–	–	–	–	–
THERMAL									
Dt _{ul} @ 1.82 Mpa	ASTM D 648	°C	88	102	102	102	93	93	92
Coefficient of thermal expansion	ASTM D 696	cm/cm/°C	–	3.76x10 ⁻⁵	3.76x10 ⁻⁵	3.76x10 ⁻⁵	4.43x10 ⁻⁵	4.43x10 ⁻⁵	4.43x10 ⁻⁵
Boiling water resistance	ISFA 2-01	–	No Effect	No Effect	No Effect	No effect	No effect	No effect	No effect
High temperature resistance	ISFA 2-01	–	No Effect	No Effect	No Effect	No effect	No effect	No effect	No effect
Reaction to fire	ASTM E 84	–	Class B	Class A	Class A	Class A	Class A	Class A	Class A
Combustion toxicity	Pittsburgh Protocol	–	98	98	98	98	67	67	67
Total Volatile Organic Compounds	ASTM D 5116	µg/m²/hr	69.1	69.1	69.1	69.1	69.1	69.1	69.1
SURFACE									
Consistency of colour (same sheet)	ISFA 2-01	–	Passes	Passes	Passes	Passes	Passes	Passes	Passes
Light resistance	ISFA 2-01	–	No Effect	No Effect	No Effect	No effect	No effect	No effect	No effect
Cleanability/Stain resistance	NEMA LD3-3.4	–	Passes	Passes	Passes	Passes	Passes	Passes	Passes
Stain resistance	ANZI/ICPA SS-1	–	Passes	Passes	Passes	Passes	Passes	Passes	Passes
Bacterial resistance	ASTM G 22	–	No growth	No growth	No growth	No growth	No growth	No growth	No growth
Fungi resistance	ASTM G 21	–	No growth	No growth	No growth	No growth	No growth	No growth	No growth
Food zone use	NSF 51	–	Approved	Approved	Approved	Approved	Approved	Approved	Approved

AVONITE®
SHAPED ACRYLIC
ELEMENTS
COLLECTION

Aristech Surfaces LLC offers an extensive range of sinks, washbasins, bathtubs and shower trays for all types of commercial and residential use. These come in a range of shapes: oval, square, rectangular and curved. Featuring classic, timeless models for facilities with enduring style, the collection embodies simple, clean décor.



Certified leader:



**NEW COLOURS, TRENDS AND EVENTS...
JOIN OUR COMMUNITY AND DISCOVER
NEW AND INSPIRING IDEAS EACH WEEK.**



Global Headquarters
ARISTECH SURFACES LLC
7350 Empire Drive
Florence KY 41042
USA
T +1 800-354-9858
dlaristechcsorders@trinseo.com

Find your closest distributor on
WWW.ARISTECHSURFACES.COM/AVONITE



AVONITE® and ADVANC3® are registered trademarks of Aristech Surfaces LLC. All other trademarks and product names are trademarks or registered trademarks of their respective rights owners. The information contained in this brochure is intended to be for information only and can be amended at any time without prior notification © 2022 Aristech Surfaces LLC. All rights reserved.