

# JUNE PROFILE

## Phase 1

- **Sowing depth:** 3-4 cm, dark germs
- **Soil:** Vegetable soil, if necessary potting soil
- **Germination temp & duration:** 8-20 °C/7-10 days
- **Row spacing/plant spacing:** 20 cm/10 cm
- **Sow indoors/harvest:** Mar-Apr/Jun-Sep
- **Sow outdoors/harvest:** Apr-Jul/Jul-Nov
- **Root depth:** 30 cm
- **Type:** Medium Eater
- Sow in the bed/pot from **April**, indoors from **March**

## PESTS

- **Beet fly:** Place crop protection net on the bed
- **Voles:** In affected gardens, install a close-meshed grid under the bed, consider setting up traps.
- **Snails:** Collect or apply mechanical protection
- **Fungal and other infectious diseases:** Remove affected plants and dispose of with household waste



## Care

- Observe a 4-year break in cultivation
- Treat bed with compost
- Fertilisation: in summer with organic fertiliser
- Mulch, but do not cover tubers
- Water regularly

## Phase 2

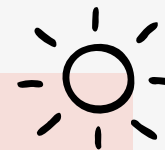
- **Pre-culture indoors:** fill the potting soil in the pots or trays. Poke holes in the soil about 2 cm apart (3-4 cm deep), put the seeds in, cover, water and place in a warm, bright place. Don't let it dry out.
- **Preparing the bed:** 2 weeks before sowing/planting, work in the compost with a rake.
- **Direct sowing in beds/pots:** From April, make grooves 20 cm apart (3-4 cm deep), place 2 seeds 10 cm apart, cover with soil and keep moist. In the pot, instead of making grooves, drill planting holes at a distance of 10 cm into the soil.



BEETROOT "Chioggia"

## Location

- **Sunny**
- **Soil:** humic, moist
- Treat **sandy soils** with compost
- **Pot:** Use vegetable soil



## Phase 3

- **Transplanting (indoor pre-culture):** As soon as you see the first proper pair of leaves; Use pots with a diameter of 7-11 cm, fill them with vegetable soil. Place seedlings in new pots and water again.
- **From the pot to the bed:** plants that have been pre-sown are only allowed outside from mid-May. To do this, dig holes that are deep enough for the plants and their roots to have room. Don't set too low!
- **Separating (direct sowing bed or pot):** Spread seedlings that have sprouted too close together to 10 cm. Either put them back in a new location or use baby leaves in salads.

## Phase 4

- **Harvest:** frost-resistant down to -3 °C, best to harvest as needed, even in winter. Raw tubers and young leaves can also be used in the kitchen.
- **Storage:** do not wash off, twist off leaves and store in a box with sand in the basement or cold frame. You can freeze the beetroot cut into pieces.

## Bed neighbours



Dill, fennel, cucumber, cabbage, coriander, garlic, lettuce, tomato, zucchini, onion



Carrot, potato, leek, corn, chard, spinach