

**PHILIPS**

Lighting

Tailored creations



# PM Highbay

A custom configured  
3D printed solution

## Project notes

CUSTOMER .....

PROJECT .....

DATE .....

## Finish options

DESCRIPTION 3D PRINTED UV-STABILIZED POLYCARBONATE  
PLASTIC WITH DECORATIVE LAYERED TEXTURE

### UPPER SHELL

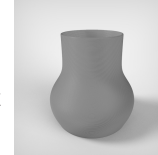
MATERIAL NAME SATIN BLACK  
MATERIAL CODE BK402 (9004)  
TEXTURE NAME LAYERED COARSE  
TEXTURE CODE T101



SATIN WHITE  
WH401 (9003)  
LAYERED COARSE  
T101



MATERIAL NAME SATIN GREY  
MATERIAL CODE GR402 (9006)  
TEXTURE NAME LAYERED COARSE  
TEXTURE CODE T101

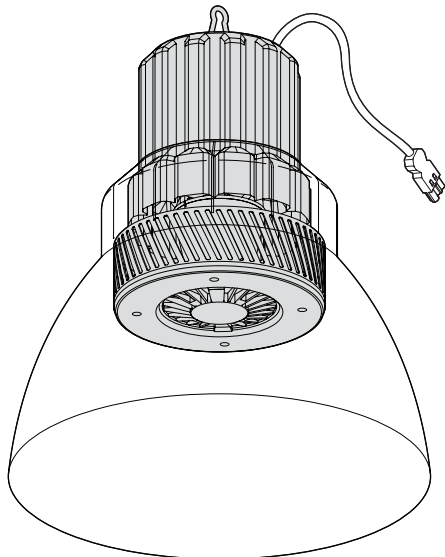
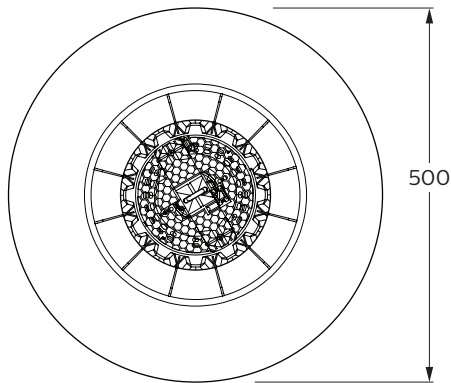
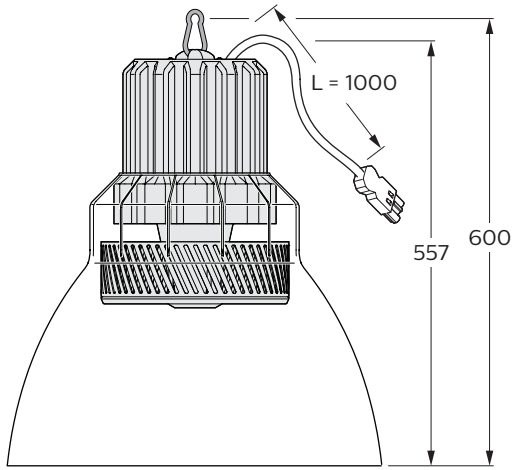


SATIN DARK GREY  
GR403 (7043)  
LAYERED COARSE  
T101



### DIFFUSER

MATERIAL NAME CLEAR  
MATERIAL CODE CL000  
TEXTURE NAME LAYERED COARSE  
TEXTURE CODE T101



## Mounting

DESCRIPTION RING CONNECTION FOR CHAIN MOUNTING  
FIXTURE WEIGHT 3.7 kg

## Electrical

DESCRIPTION PHILIPS LED MODULE AND PSU / PSD DRIVER  
ELECTRIC CORD WITH WIELAND QUICK CONNECT GST18i3, 3 / 5 POLE, MALE

INPUT WATTAGE 80W / 145w ± 10%

INPUT VOLTAGE 220-240vac

FREQUENCY 50-60hz

POWER FACTOR >0.9

CONTROL NON DIMMABLE / DIMMABLE

## Optical

DESCRIPTION 3D PRINTED DIFFUSER WITH 70° / 120° BEAM

LUMEN OUTPUT 120S/830: 12,000 LM, 120S/840: 12,000 LM +/-10% SYSTEM OUTPUT  
200S/830: 20,000 LM, 200S/840: 20,000 LM +/-10% SYSTEM OUTPUT

CCT 3000K / 4000K, CRI > 80

UGR <22

LIFETIME 50,000hrs to L70 @ 25° C

## Operational & certifications

PROTECTION CLASS IP20, IK05, Electrical Class II

AMBIENT RANGE +0° to +40° C

CERTIFICATIONS CE, RoHS

GLOWWIRE TEST 650°