

## Event Rentals Kit



We offer an environmentally friendly and uniquely innovative space for special events. From meetings for 40 to cocktail receptions for 800, the Epicenter is a blank canvas that can be transformed to realize your vision. common events become extraordinary events when produced in an uncommon setting.



Hosting your event at Artists For Humanity directly supports our mission to bridge economic, racial, and social divisions by providing under-resourced urban youth with the keys to self-sufficiency through paid employment in art and design.

Your rental fee helps support the employment of over 375 Boston teens annually in our award winning teen art and design enterprise!

## SPACE FEATURES + DESCRIPTIONS

### LEWIS GALLERY

---

- 5,000 Sq. Ft.
- 18 Ft. Ceilings
- Additional 1,200 sq. Ft wrap around mezzanine that overlooks the Lewis
- Gallery Garage style door that opens onto an adjoining courtyard that offers an additional 1,200 sq. Ft. (Seasonal)
- Retractable wall that connects the Lewis Gallery to the AFH Art Gallery.
- Unique architectural details such as railings made from car windshields
- South facing windows that provide abundant natural light.
- Dimmable lighting
- Wireless internet
- (8) 20-amp circuits
- Heat + AC
- Ground level load in
- Adorned with beautiful paintings and photo-graphs

### THE AFH GALLERY

---

- 3,200 Sq. Ft.
- 18 Ft. Ceilings
- Additional 1,500 sq. Ft wrap around Mezzanine that overlooks the gallery
- Retractable wall that connects the AFH Art Gallery to the Lewis Gallery.
- Dimmable lighting
- Wireless Internet
- Heat + AC
- Adorned with beautiful paintings and photo-graphs (not removable)

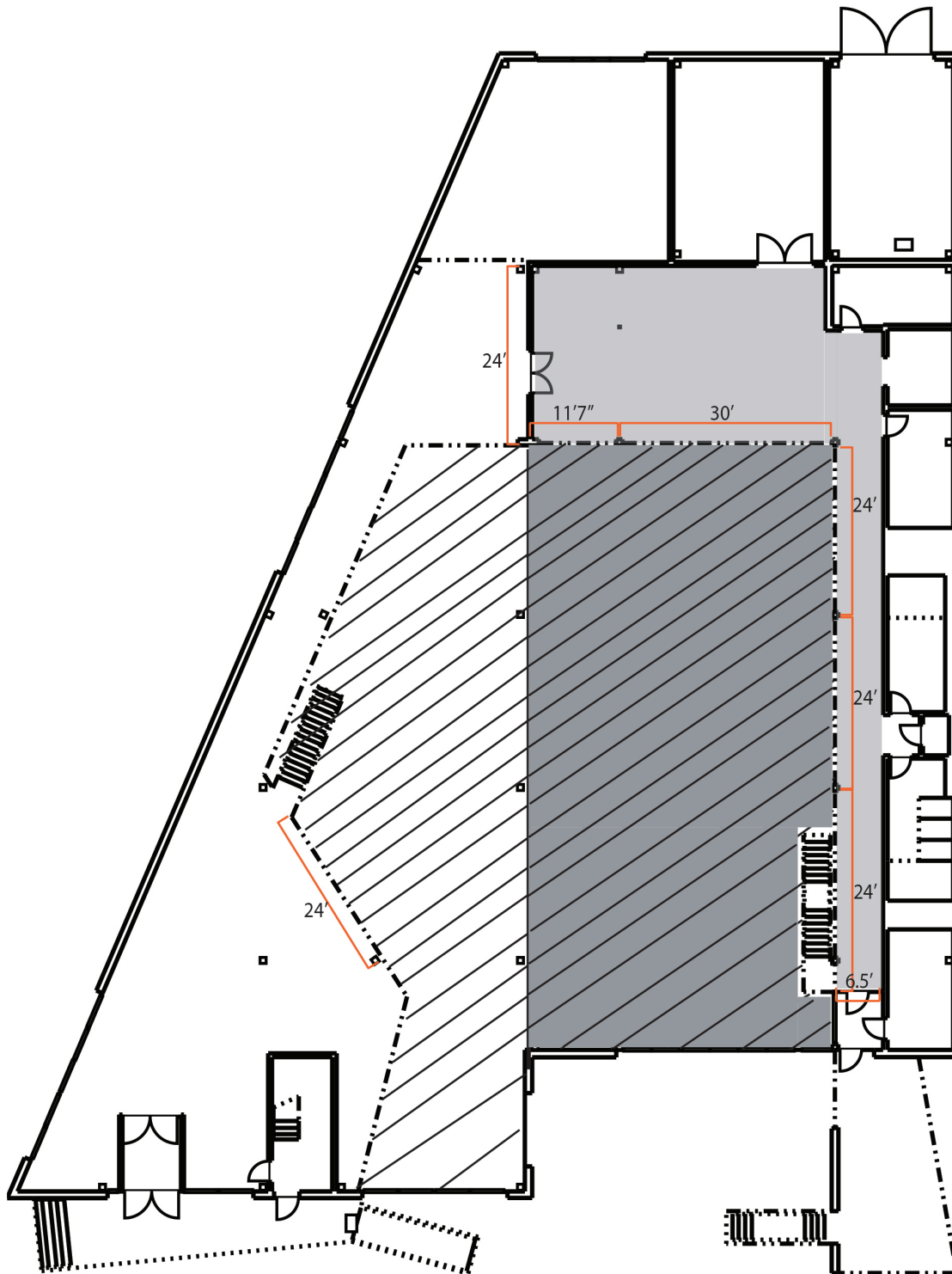
### MISC

- Fully Equipped kitchen
- Up to 200 amps of additional power
- Located in the innovation district. Ideal for parking and public transportation; we are just a couple blocks from the Broadway MBTA stop.

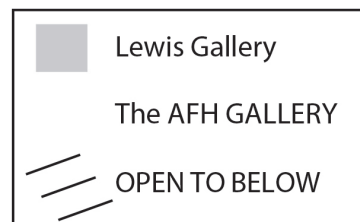


# FLOOR PLAN: MEZZANINE

West 1st St.



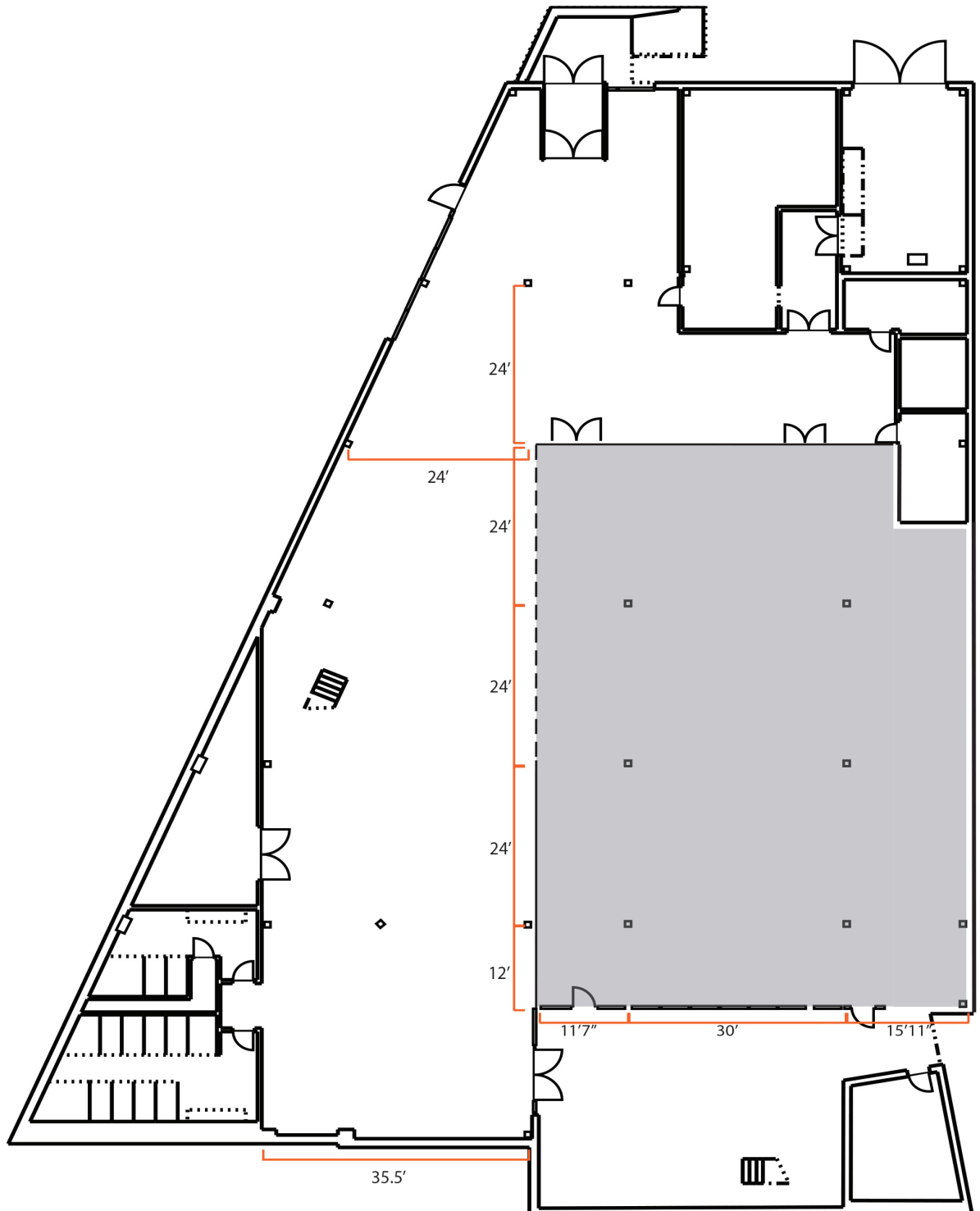
West 2nd St.  
Main Entrance



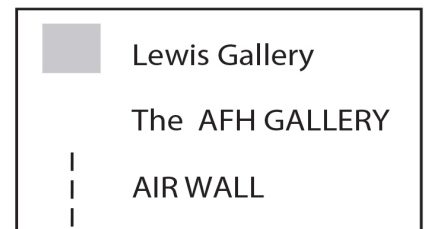


# FLOOR PLAN: 1ST FLOOR

West 1st St.



West 2nd St.



## VENUE PRICING: Lewis Gallery Rental Fees

MONTH	MON-WED	THUR-FRI	SATURDAY	SUNDAY
JAN-MARCH	\$4,000.00	\$6,250.00	\$6,350.00	\$5,250.00
APRIL-JUNE	\$4,550.00	\$6,700.00	\$7,800.00	\$6,250.00
JULY-AUGUST	\$4,550.00	\$6,250.00	\$4,550.00	\$5,250.00
SEPT-OCT	\$4,550.00	\$6,700.00	\$7,800.00	\$6,250.00
NOVEMBER	\$4,000.00	\$6,500.00	\$6,700.00	\$5,250.00
DECEMBER	\$4,550.00	\$6,700.00	\$7,800.00	\$6,250.00

**Note:** The AFH Art Gallery, a beautiful 3,200 sq. ft. space adjacent to the Lewis Gallery, is also available for rent. Please inquire with Rich Frank, Director of Business Development at [rfrank@afhboston.org](mailto:rfrank@afhboston.org), for details and pricing.

**Membership:** Individuals and for-profit corporations hosting an event must be AFH members.

**Membership Fee:** \$1,000

## EXCLUSIVE CATERER & PREFERRED VENDORS

### Exclusive Caterer

Gourmet Caterers  
[gourmetcaterers.com](http://gourmetcaterers.com)  
617.522.2820

### Preferred Audio/Visual Boston Audio

Rentals 617.397.0233  
[info@bostonaudiorentals.com](mailto:info@bostonaudiorentals.com)

### Preferred Security

Guardian Security and Protection  
617.645.4495

### Preferred Parking

Channel Center Garage  
Metropolis Technologies  
116 W. 1st Street Boston, Ma 02127

### Preferred Hotel

Cambria Hotel South Boston  
Sarah Gruber, Dir. of Sales  
[sgruber@cambriaboston.com](mailto:sgruber@cambriaboston.com)  
617.765.2634  
[www.cambriaboston.com](http://www.cambriaboston.com)

### Preferred Lighting & Production

Frost Productions  
[frostproductions.biz](http://frostproductions.biz)  
617.544.7555

High Output  
[highoutput.com](http://highoutput.com)  
781.364.1800