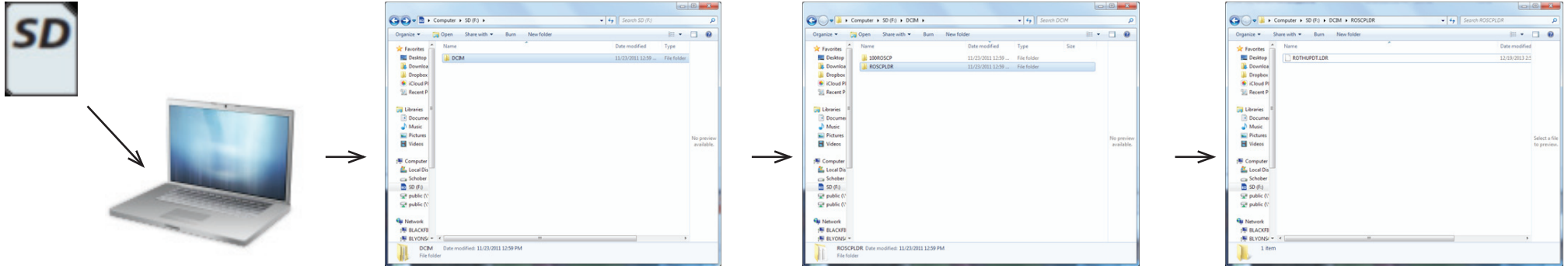


ROSCOPE 1000 FW Update (IF = Version 4.33sp007 or greater)



- 1) Download the new Software from our homepage: www.rothenberger.com → Service → Technical Downloads → Software and save it on the inserted SD Card: Computer → SD (X:) → DCIM → ROSCPLDR



- 2) Caution! Never turn the unit power off during an update!

