

CERTIFICATE OF ANALYSIS
 #195 / 15.05.2026

Name of product: Helichrysum stoechas Oil
 Customer: Natural Heroes Europe EOOD
 Sample identification: HLS.26016.2989.0.0.S1658.T0
 Additional information: FL Helichrysum Essential oil,
 Stoechas (Organic)
 Lot: MO 41612

Date of receipt: 14/05/2026
 Date of analysis: 15/05/2026
 Sample quantity: 20 g
 Sampled by: client

Chromatographic profile

Parameter	Range according to company specification	Result
alpha-Pinene	-	68.01
beta-Pinene	-	0.69
Limonene	-	19.15
1,8-Cineol	-	1.07
beta-Caryophyllene	-	0.58
trans-alpha-Bergamotene	-	0.96
beta-Bisabolene	-	2.49

Disclaimer: This report of analysis may not be modified in any way, or reproduced except in full, without written approval from Esseterre Bulgaria Ltd. The chromatographic profile is list of components selected as representative and characteristic components of an essential oil and does not determine the actual ratio of the components, but rather assesses their relative ratios. The analysis results refer only to the specific sample provided and do not constitute an opinion on the entire batch from which it was taken.

Attachment: Chromatographic file HLS.26016.2989.0.0.S1658.T0

Laboratory Manager: Daniela Radeva Georgieva



Product Quality Control: Teodora Georgieva Popova





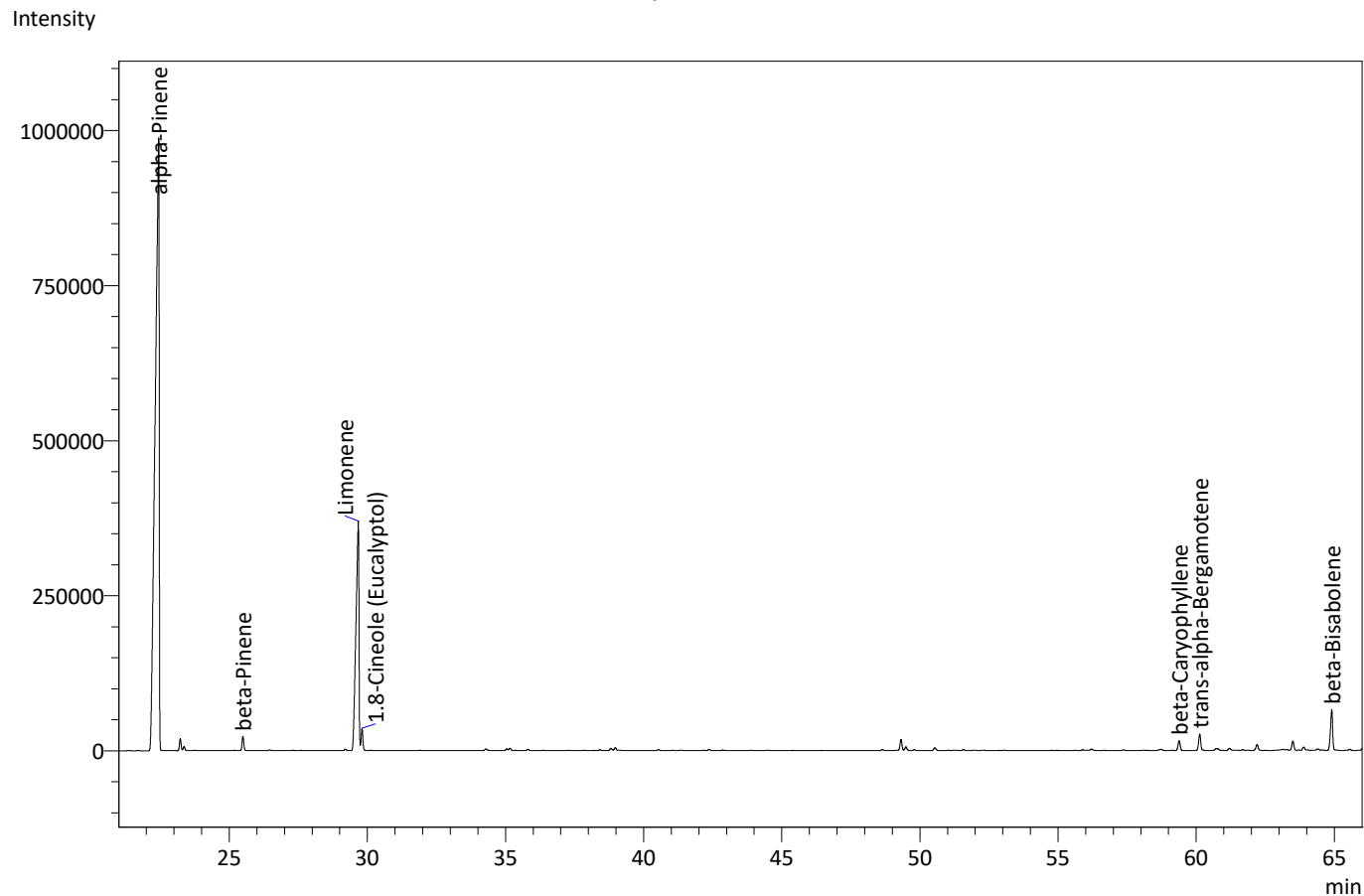
Sample Information
Analyzed by Esseterre Laboratory
Sample Type: Essential Oil
Sample Name: Helichrysum stoechas
Sample ID:HLS.26016.2989.0.0.S1658.T0
Analyzed: 5/15/2026 11:41:41 AM
Injection Volume: 2 uL

System Configuration

Column: 60m x 0.25mm x 0.25µm
Stationary phase: 5% diphenyl / 95% dimethyl polysiloxane
Oven temperature: 40°C to 300°C - 2°C /min

Detector: FID/MS
Split ratio: 1:200
Injector temperature: 260°C

Chromatogram Helichrysum stoechas



Peak Report:

FID1 ID#	Ret.Time	Name	Conc.	Units
1	22.446	alpha-Pinene	68.01	%
2	25.494	beta-Pinene	0.69	%
3	29.671	Limonene	19.15	%
4	29.806	1.8-Cineole (Eucalyptol)	1.07	%
5	59.382	beta-Caryophyllene	0.58	%
6	60.130	trans-alpha-Bergamotene	0.96	%
7	64.908	beta-Bisabolene	2.49	%

Percentages are calculated from GC/FID peaks areas without using corrections factors;
Components are identified by a combination of Rt (Esseterre database) and mass spectra libraries (242k compounds).

GAS CHROMATOGRAPHIC ANALYSIS

Method : Analysis of the composition of an essential oil or other volatile liquide by GC-FID

Results : See analysis summary

Date : 15-05-2026

Product: Helichrysum essential oil, Stoechas

Lot: MO 41612

Report prepared for: Natural Heroes Europe EOOD

Internal code: HLS.26016.2989.0.0.S1658.T0

FULL ANALYSIS DATA

Column WAX

Ret. Time	Name	Area	Unit
20.046	2-Bornene	0.30	%
22.446	alpha-Pinene	68.01	%
23.225	alpha-Fenchene	0.55	%
23.362	Camphene	0.20	%
25.494	beta-Pinene	0.69	%
26.446	beta-Myrcene	0.05	%
29.197	p-Cymene	0.09	%
29.671	Limonene	19.15	%
29.806	1.8-Cineole (Eucalyptol)	1.07	%
34.287	Terpinolene	0.12	%
35.042	Linalool	0.10	%
35.16	alpha-Pinene epoxide	0.14	%
35.805	trans-Verbenol	0.08	%
38.413	trans-Pinocarveol	0.05	%
38.816	cis-Verbenol	0.14	%
38.969	cis-Chrysanthemyl alcohol	0.17	%
40.532	Isoborneol	0.06	%
49.316	alpha-Pyronene	0.61	%
49.492	Lavandulyl acetate	0.21	%
49.788	trans-Carveol	0.05	%
50.537	Dihydrocarvyl acetate	0.16	%
56.21	Copaene	0.10	%
58.726	cis-alpha-Bergamotene	0.11	%
59.382	beta-Caryophyllene	0.58	%
60.13	trans-alpha-Bergamotene	0.96	%
60.715	Aromandendrene	0.10	%
60.786	Guaia-6,9-diene	0.10	%
61.197	(Z)-beta-Farnesene	0.14	%

Ret. Time	Name	Area	Unit
61.69	alpha-Humulene	0.05	%
62.204	Alloaromadendrene	0.37	%
63.142	gamma-Muurolene	0.09	%
63.278	alpha-Amorphene	0.07	%
63.501	(E)-beta-Farnesene	0.56	%
63.89	beta-Selinene	0.25	%
64.405	Unidentified	0.13	%
64.564	alpha-Muurolene	0.04	%
64.908	beta-Bisabolene	2.49	%
65.559	gamma-Cadinene	0.07	%
66.036	delta-Cadinene	0.25	%
67.034	gamma-Selinene	0.34	%
67.468	Selina-3,7(11)-diene	0.18	%
70.198	Caryophyllene oxide	0.12	%
70.756	Viridiflorol	0.05	%
71.468	Ledol	0.09	%
Total		99.22	%

ALLERGENS according Regulation 1223/2009

The compounds detected below 0.05% of total signal are not present.