

Name of product: Eucalyptus Oil

Date of receipt: 14/05/2026

Customer: Natural Heroes Europe EOOD

Date of analysis: 15/05/2026

Sample identification: EUC.26016.2988.0.0.S1657.T0

Sample quantity: 20 g

Additional information: FL Eucalyptus Essential oil, Globulus
(Organic)

Sampled by: client

Lot: MO 41615

Chromatographic profile

| Parameter | Range according to standard method | Result |
|--------------------|------------------------------------|--------|
| alpha-Pinene | - | 2.63 |
| alpha-Phellandrene | - | 0.22 |
| Limonene | - | 3.39 |
| 1,8-Cineol | - | 73.42 |
| p-Cymene | - | 10.04 |
| Aromadendrene | - | 0.15 |
| trans-Pinocarveol | - | 0.34 |
| Globulol | - | 0.14 |

Disclaimer: This report of analysis may not be modified in any way, or reproduced except in full, without written approval from Esseterre Bulgaria Ltd. The chromatographic profile is list of components selected as representative and characteristic components of an essential oil and does not determine the actual ratio of the components, but rather assesses their relative ratios. The analysis results refer only to the specific sample provided and do not constitute an opinion on the entire batch from which it was taken.

Attachment: Chromatographic file EUC.26016.2988.0.0.S1657.T0

Laboratory Manager: Daniela Radeva Georgieva



Product Quality Control: Teodora Georgieva Popova





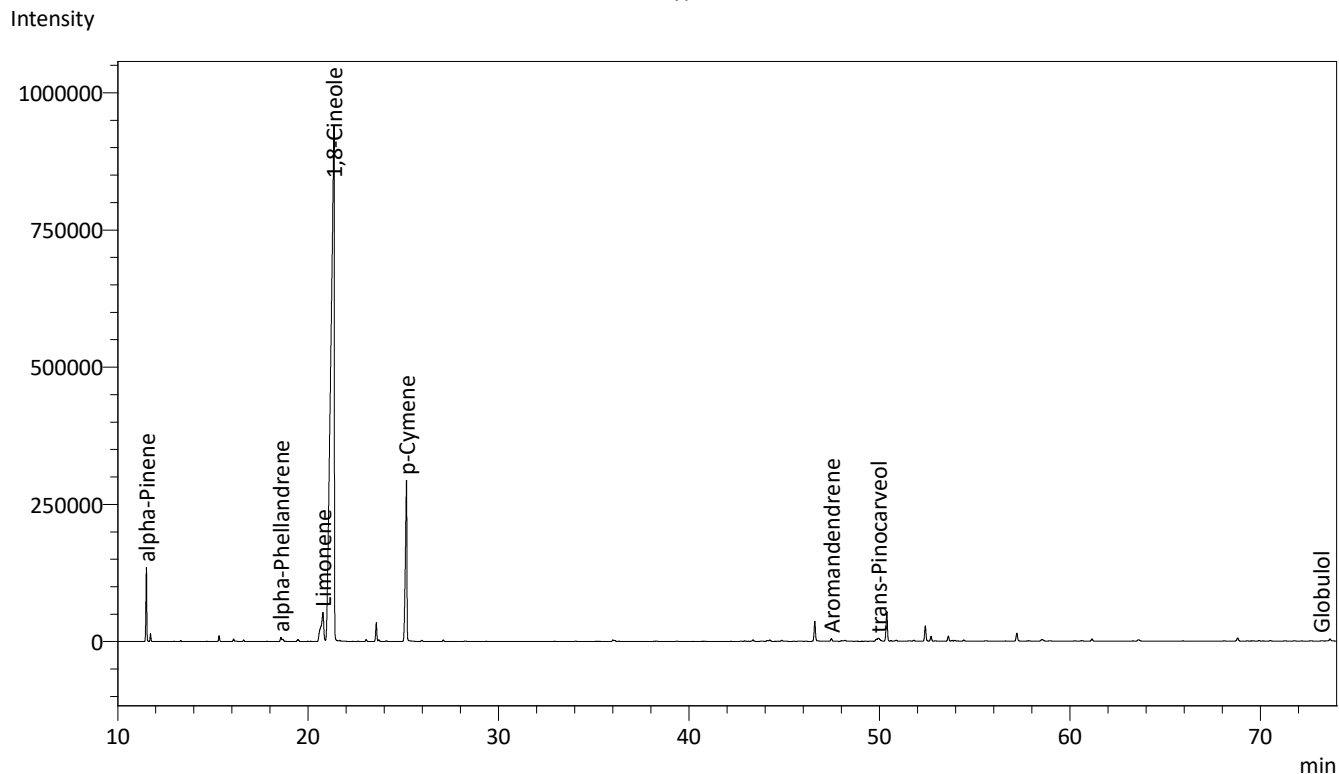
Sample Information
 Analyzed by Esseterre Laboratory
 Sample Type: Essential Oil
 Sample Name: Eucalyptus
 Sample ID: EUC.26016.2988.0.0.S1657.T0
 Analyzed: 14.5.2026 15:55:02
 Injection Volume: 2 uL

Column: 60mx0.25mmx0.25um
 Carrier Gas: He
 Stationary phase: PEG
 Oven temperature: 40 °C - 1 min; to 220 °C - 2°C/min

System Configuration

Detector: FID/MS
 Solution: 6% sol in CH2Cl2
 Split ratio: 1:200

Chromatogram
 Eucalyptus



| FID1 ID# | Ret.Time | Name | Conc. | Units |
|----------|----------|--------------------|-------|-------|
| 1 | 11.505 | alpha-Pinene | 2.63 | % |
| 2 | 18.571 | alpha-Phellandrene | 0.22 | % |
| 3 | 20.776 | Limonene | 3.39 | % |
| 4 | 21.355 | 1,8-Cineole | 73.42 | % |
| 5 | 25.164 | p-Cymene | 10.04 | % |
| 6 | 47.477 | Aromandendrene | 0.15 | % |
| 7 | 49.944 | trans-Pinocarveol | 0.34 | % |
| 8 | 73.659 | Globulol | 0.14 | % |

Typical Ranges of Components of rectified (70 - 75%) oil of Eucalyptus globulus (ISO 770):

| | | | |
|--------------------|------------|-------------------|--------|
| alpha-Pinene | 1 - 10% | p-Cimene | 1 - 6% |
| alpha-Phellandrene | 0.5 - 1.5% | trans-Pinocarveol | <5% |
| Limonene | 2 - 15% | Aromadendrene | <2% |
| 1,8-Cineole | > 70% | Globulol | traces |

Percentages are calculated from GC/FID peaksareas without using corrections factors;
 Components are identified by a combination of Rt (Esseterre database) and mass spectra libraries (242k compounds).

GAS CHROMATOGRAPHIC ANALYSIS

Method : Analysis of the composition of an essential oil or other volatile liquide by GC-FID

Results : See analysis summary

Date : 14-05-2026

Product: Eucalyptus essential oil

Lot: MO 41615

Report prepared for: Natural Heroes Europe EOOD

Internal code: EUC.26016.2990.0.0.S1657.T0

FULL ANALYSIS DATA

Column WAX

| Ret. Time | Name | Area | Unit |
|-----------|-------------------------|-------|------|
| 11.505 | alpha-Pinene | 2.63 | % |
| 11.721 | alpha-Thujene | 0.27 | % |
| 15.323 | beta-Pinene | 0.23 | % |
| 16.084 | Sabinene | 0.12 | % |
| 18.571 | alpha-Phellandrene | 0.22 | % |
| 18.664 | beta-Myrcene | 0.12 | % |
| 19.465 | alpha-Terpinene | 0.13 | % |
| 20.776 | Limonene | 3.39 | % |
| 21.355 | Eucalyptol | 73.42 | % |
| 23.579 | gamma-Terpinene | 0.87 | % |
| 25.164 | p-Cymene | 10.05 | % |
| 25.966 | Terpinolene | 0.05 | % |
| 43.36 | Linalool | 0.09 | % |
| 46.605 | Terpinen-4-ol | 1.11 | % |
| 47.477 | Aromandendrene | 0.15 | % |
| 49.84 | unidentified | 0.12 | % |
| 49.944 | trans-Pinocarveol | 0.34 | % |
| 50.389 | Cryptone | 1.70 | % |
| 52.409 | alpha-Terpineol | 0.89 | % |
| 52.713 | unidentified | 0.28 | % |
| 53.618 | p-Menth-1-en-7-al | 0.302 | % |
| 57.216 | p-Cumic aldehyde | 0.51 | % |
| 58.537 | unidentified | 0.187 | % |
| 61.163 | unidentified | 0.133 | % |
| 63.61 | unidentified | 0.121 | % |
| 68.813 | 14-Hydroxycaryophyllene | 0.209 | % |
| 73.659 | Globulol | 0.137 | % |
| 76.076 | Spathulenol | 0.588 | % |

| Ret. Time | Name | Area | Unit |
|-----------|-------|-------|------|
| | Total | 98.34 | % |

ALLERGENS according Regulation 1223/2009

The compounds detected below 0.05% of total signal are not present.