

CERTIFICATE OF ANALYSIS  
#198 / 20.05.2026

Name of product: Cistus Oil  
Customer: Natural Heroes Europe EOOD  
Sample identification: RL.26016.2991.0.0.S1660.T0  
Additional information: FL Cistus Essential oil, Ladanifer  
(Organic)  
Lot: MO 41616


Date of receipt: 14/05/2026  
Date of analysis: 20/05/2026  
Sample quantity: 20 g  
Sampled by: client

## Chromatographic profile

Parameter	Range according to company specification	Result
alpha-Pinene	-	47.96
Camphene	-	9.01
p-Cymene	-	3.55
Bornyl acetate	-	3.99
trans-Pinocarveol	-	4.79
Borneol	-	1.32
Viridiflorol	-	1.30

Disclaimer: This report of analysis may not be modified in any way, or reproduced except in full, without written approval from Esseterre Bulgaria Ltd. The chromatographic profile is list of components selected as representative and characteristic components of an essential oil and does not determine the actual ratio of the components, but rather assesses their relative ratios. The analysis results refer only to the specific sample provided and do not constitute an opinion on the entire batch from which it was taken.

Attachment: Chromatographic file RL.26016.2991.0.0.S1660.T0

Laboratory Manager: Daniela Radeva Georgieva 

Product Quality Control: Teodora Georgieva Popova 



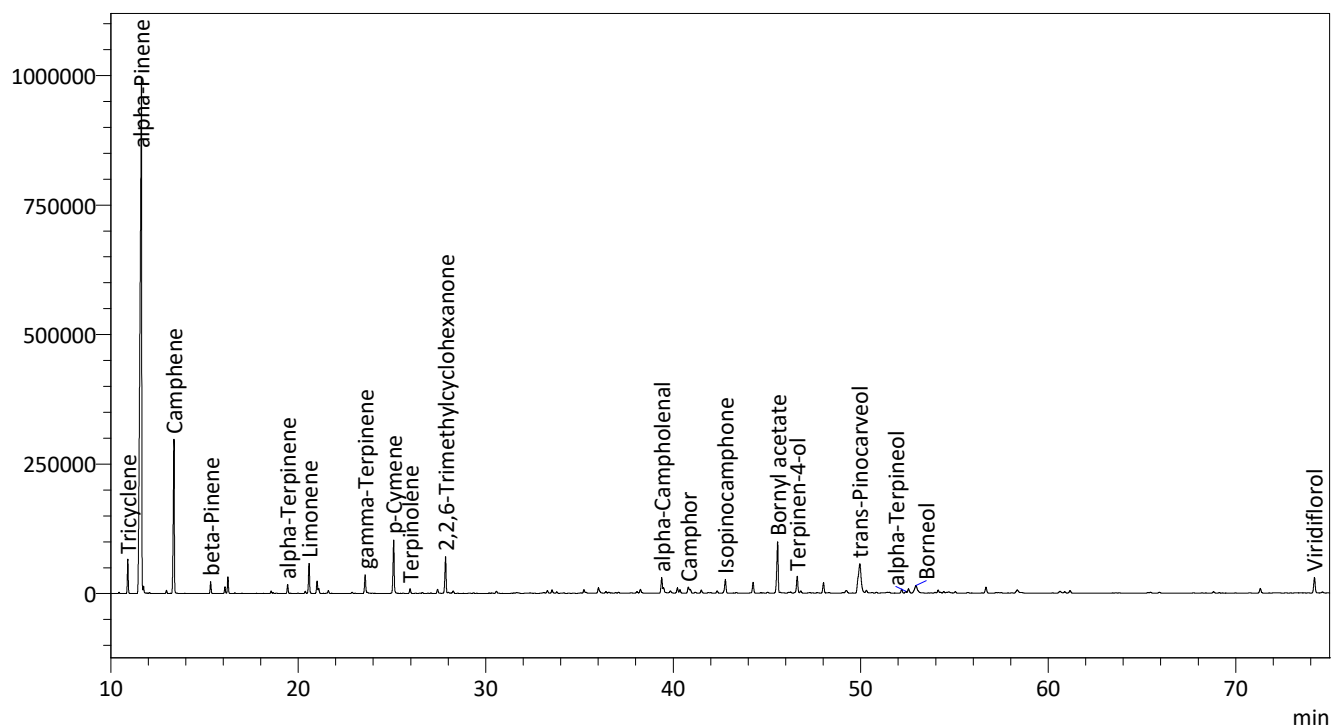
**Sample Information**  
 Analyzed by Esseterre Laboratory  
 Sample Type: Essential Oil  
 Sample Name: Rockrose labdanum  
 Sample ID: RL.26016.2991.0.0.S1660.T0  
 Analyzed: 14.5.2026 18:03:25  
 Injection Volume: 2 uL

**System Configuration**  
 Column: 60mx0.25mmx0.25um  
 Carrier Gas: He  
 Stationary phase: PEG  
 Oven temperature: 40 °C - 1 min; to 220 °C - 2°C/min

Detector: FID/MS  
 Solution: 6% sol in CH<sub>2</sub>Cl<sub>2</sub>  
 Split ratio: 1:200

Chromatogram  
Rockrose labdanum

Intensity



ID#	Ret.Time	Name	Conc.	Units
1	10.911	Tricyclene	1.63	%
2	11.637	alpha-Pinene	47.96	%
3	13.373	Camphene	9.01	%
4	15.328	beta-Pinene	0.61	%
5	19.435	alpha-Terpinene	0.49	%
6	20.579	Limonene	1.75	%
7	23.569	gamma-Terpinene	1.19	%
8	25.092	p-Cymene	3.55	%
9	25.967	Terpinolene	0.29	%
10	27.859	2,2,6-Trimethylcyclohexanone	2.45	%
11	39.387	alpha-Campholenal	1.20	%
12	40.808	Camphor	0.52	%
13	42.782	Isopinocampone	1.10	%
14	45.571	Bornyl acetate	3.99	%
15	46.615	Terpinen-4-ol	1.35	%
16	49.952	trans-Pinocarveol	4.79	%
17	52.405	alpha-Terpineol	0.14	%
18	52.949	Borneol	1.32	%
19	74.201	Viridiflorol	1.30	%

Percentages are calculated from GC/FID peaks areas without using corrections factors;  
 Components are identified by a combination of Rt (Esseterre database) and mass spectra  
 libraries (242k compounds).

## GAS CHROMATOGRAPHIC ANALYSIS

Method : Analysis of the composition of an essential oil or other volatile liquide by GC-FID

Results : See analysis summary

Date : 15-05-2026

Product: FL Cistus Essential oil, Ladanifer

Lot: MO 41616

Report prepared for: Natural Heroes Europe EOOD

Internal code: RL.26016.2991.0.0.S1660.T0

### FULL ANALYSIS DATA

Column WAX

Ret. Time	Name	Area	Unit
10.911	Tricyclene	1.635	%
11.637	<b>alpha-Pinene</b>	47.957	%
11.749	alpha-Thujene	0.373	%
12.972	alpha-Fenchene	0.164	%
13.373	Camphene	9.009	%
15.328	<b>beta-Pinene</b>	0.609	%
16.090	Sabinene	0.351	%
16.251	Verbenene	0.873	%
18.557	alpha-Phellandrene	0.134	%
19.435	<b>alpha-Terpinene</b>	0.494	%
20.374	unidentified	0.127	%
20.579	<b>Limonene</b>	1.754	%
21.006	Eucalyptol	0.732	%
21.092	beta-Phellandrene	0.264	%
21.607	unidentified	0.171	%
23.569	gamma-Terpinene	1.187	%
25.092	p-Cymene	3.551	%
25.967	<b>Terpinolene</b>	0.290	%
27.432	unidentified	0.267	%
27.859	2,2,6-Trimethylcyclohexanone	2.447	%
28.265	unidentified	0.177	%
30.572	unidentified	0.171	%
33.289	Bornyl formate	0.222	%
33.536	Isophorone	0.251	%
35.239	unidentified	0.270	%
36.012	p-Cymenene	0.549	%
38.252	unidentified	0.330	%
39.387	alpha-Campholenal	1.196	%
39.488	unidentified	0.445	%
39.847	unidentified	0.259	%

Ret. Time	Name	Area	Unit
40.225	alpha-Copaene	0.398	%
40.358	Chrysanthenone	0.273	%
40.808	<b>Camphor</b>	0.523	%
40.915	trans-Pinocamphone	0.267	%
41.169	unidentified	0.102	%
41.499	unidentified	0.258	%
42.341	unidentified	0.169	%
42.782	Isopinocamphone	1.096	%
44.260	Pinocarvone	0.814	%
45.571	Bornyl acetate	3.989	%
46.615	Terpinen-4-ol	1.353	%
46.803	<b>Caryophyllene</b>	0.192	%
48.016	Myrtenal	0.795	%
49.225	unidentified	0.299	%
49.952	trans-Pinocarveol	4.788	%
50.300	alpha-Phellandrene-8-ol	0.278	%
52.186	Myrtenyl acetate	0.303	%
52.405	<b>alpha-Terpineol</b>	0.142	%
52.546	Verbenone	0.384	%
52.949	Borneol	1.323	%
56.680	delta-Cadinene	0.523	%
58.345	Myrtenol	0.411	%
60.636	trans-Carveol	0.222	%
60.874	cis-Calamenene	0.122	%
61.167	p-Cymen-8-ol	0.220	%
65.460	alpha-Calacorene	0.085	%
65.925	Palustrol	0.081	%
71.315	Ledol	0.374	%
74.201	Viridiflorol	1.299	%
Total		97.34	%

#### ALLERGENS according Regulation 1223/2009

The compounds detected below 0.05% of total signal are not present.